



Project Name:

Specifier:

Distributor:

Quantity:

Type:

Signature:

GR Series

The
Innovative
Line
of



LED Lighting Solutions

GR

Series in low to medium ceiling heights typically found in residential, commercial or retail applications. GR Series fixtures are highly adjustable via hot aiming mechanism and hallmarked by superior light quality. The Graffiti™ fixtures provide cost effective LED lighting solutions. As the creative spirit of its name implies, Graffiti™ systems provide all the quality SLI has grown famous for over the last 25 years, but at reduced lead times, affordable price points and innovative technologies that will liberate your creative flair.

THERMAL MANAGEMENT: Proprietary high performance aluminum black heatsink for maximum LED life

ADJUSTABLE/FIXED

SPECIFICATIONS

MOUNTING - Recessed in architectural ceiling. Butterfly brackets and Hanger bars included with housing and mounting pans.

- **RM-** Open fixture for retrofit for remodel in existing ceilings
- **IC-**Housing for new construction where insulation comes in contact with fixture
- **NIC-**Housing for new construction where IC not required
- **NP-** For New construction
- **DP-** Pan for dropped ceilings
- **BP-** Pan for metal studs
- **CP-** Chicago Plenum

HOUSING - C1/C2 Fixed housing is smaller size than Lutron/EldoLED Fixed housing (see page 3 for details)*.

TRIM - One piece die cast aluminum, flanged or flangeless trim with a 1" regress bevel and overlap for flange. Available for wet locations. Accommodates up to 1" ceiling thickness as standard.

- **ZT/ZST-** for use in plaster/GWB ceilings
- **FT/FST-** for use in architectural ceilings

ELECTRICAL

- **Standard 0-10v (C1)** Dimming down to 1%
 - **TRIAC/ELV (C2)** Dimming down to 1%
 - **EldoLED 0-10v (E1)** Logarithmic Dimming down to 0.1%
 - **EldoLED Dali (E2)** Dimming down to 0.1%
 - **EldoLED 0-10v (E3)** Linear Dimming down to 0.1%
 - **Lutron Hi-lume EcoSystem 1% (LTB)** Hi-lume 1% with Fade-to-Black (former H-Series) digital EcoSystem Driver
 - **Lutron Hi-lume Premier 0.1% (LTP)** Hi-lume Premier 0.1% with Fade-to-Black digital EcoSystem
 - **EM Pack** Dimming driver with emergency battery backup
- All drivers are field replaceable*

Specifier/Installer is responsible for testing & validating compatibility of any control equipment used. Additional conductors may be required depending on dimming system.

LED

- **CZ- Citizen** 2700 / 3000 / 3500K / 4000K, 90+CRI, 50+R9
- **AD- Ambient Dim™** 3000 to 1900K / 3000 to 2200K / 2700 to 2200K, 97 CRI
- **XT- Xicato** Available on request

LENS/OPTICS - Interchangeable reflector provides multiple beam patterns. Field-changeable optics



- **Spot (15°)** • **Narrow (24°)** • **Flood (38°)** • **Wide Flood (60°)**

Optional lenses available for aperture include Solite and Veiling Acrylic. Accepts two optical accessories and an optional trim mounted lens.

FINISH - Black powder paint housing.

Aperture trim available in white, black and silver as standard. White recommended for field paint matching.

WARRANTY - 5 year limited on LED and driver. See website for details.

LABELS -  US tested to UL standards 1598, Dry/Damp and Wet listings. IC/Airtight,  Supports CA Title 24 part 6 compliance meeting JA8 Requirements in many combinations. Chicago Plenum Available.



ORDER INFO

CODE

Graffiti™ Housing

GR

Housing

- RM = Retrofit
- IC = IC/Airtight
- NIC = Non IC
- NP = New Pan
- DP = Dropped Pan
- BP = Bracket Pan
- CP = Chicago Plenum

Source/System Watts/Delivered lm/LPW(Lumens/watt)

- CZ14** = Citizen 14.2W / 1285lm / 91LPW Values Based on Round 40° fixed
- CZ20** = Citizen 21W / 1740lm / 84LPW
- AD14** = Ambient Dim 14.6W / 812lm / 55LPW
- AD20** = Ambient Dim 21.3W / 1396lm / 66LPW (AD 3019 only)
- XT** = Xicato - Contact Factory

Type

- F = Fixed
- A = Adjustable

CCT

- | | |
|--------------------|--|
| Fixed White | Ambient Dim |
| 27 = 2700K | 3019 = 3000K to 1900K |
| 30 = 3000K | 3022 = 3000K to 2200K (AD14 only) |
| 35 = 3500K | 2722 = 2700 to 2200K (AD14 only) |
| 40 = 4000K | |

Beam

- SP = Spot
- NF = Narrow flood
- FL = Flood
- WF = Wide flood

Driver

- C1** = 0-10V dimming, 1%, 120-277v
- C2** = TRIAC/ELV 2-wire, 1% 120V only (Leading/Trailing Edge)
- E1** = EldoLED 0-10V Logarithmic Dim, 0.1%, 120-277v
- E2** = EldoLED DALI, 0.1%, 120-277v
- E3** = EldoLED 0-10V Linear Dim, 0.1%, 120-277v
- LTB** = Hi-lume 1% with Fade-to-Black (former H-Series) digital EcoSystem Driver, 120-277v (LDE1)
- LTP** = Hi-lume Premier 0.1% with Fade-to-Black digital EcoSystem, 120-277v (PEQ0)
- EM****=Emergency Pack **Lutron & EldoLED require Inverter

Graffiti™ Trim

GRT

Shape

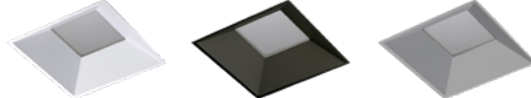
- RD = Round
- SQ = Square

Trim

- FT = Flanged
- ZT = Flangeless
- FST* = Flanged Shower
- ZST* = Flangeless Shower
- *Lens Required

Finish

- WHT = White
- BLK = Black
- SLV = Silver



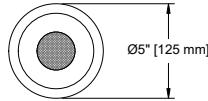
Lens

79A / 91A

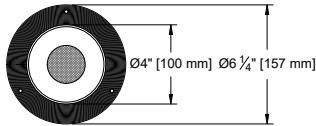
- 91A = Solite
- 79A = Frosted
- None

[* CLICK HERE to view Accessories for Trims.](#)

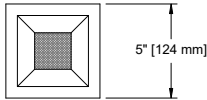
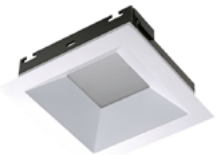
INFORMATION- TRIM



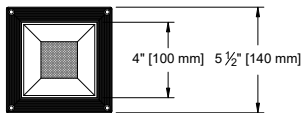
ROUND/ FLANGED



ROUND / FLANGELESS



SQUARE / FLANGED



SQUARE / FLANGELESS

PHOTOMETRICS

*Visit website for further photometric data or Click Here

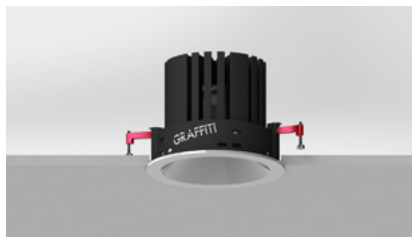
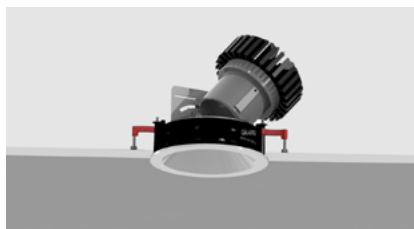
*LED Technology rapidly changes. Please consult factory for latest specs and photometry.

INFORMATION- HOUSING

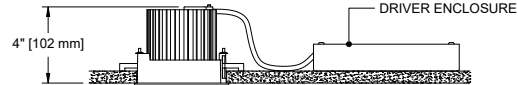
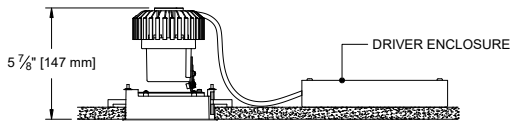
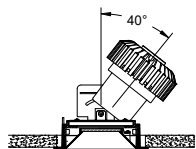
For easy installation in existing ceilings.

RETROFIT

ADJUSTABLE



FIXED

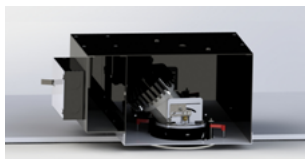


For projects requiring housings or IC rated fixtures.

1287 Hanger Bars comes standard with fixed and adjustable housing (see below for hanger bar dimensions).

IC/NIC

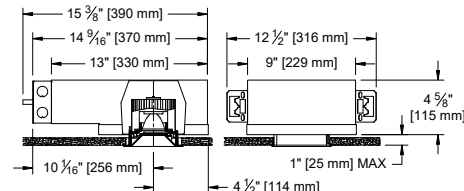
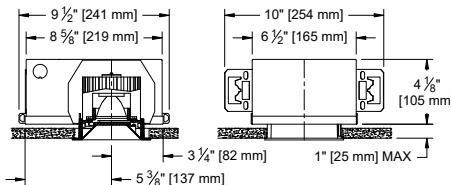
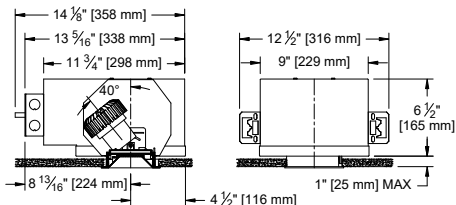
ADJUSTABLE All Drivers



FIXED C1/C2 Drivers



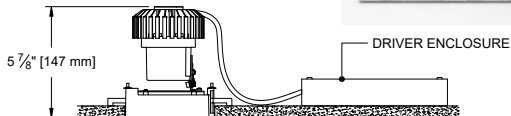
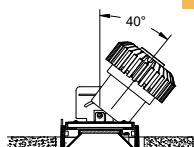
FIXED LUTRON / ELDO Drivers



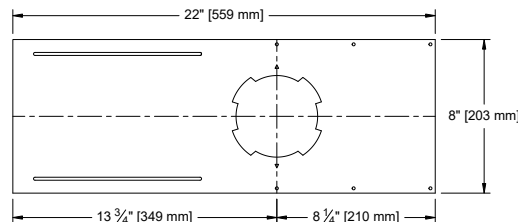
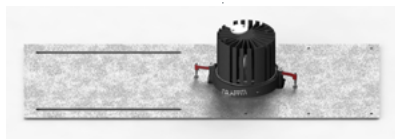
For new construction applications not requiring a housing.

PAN

ADJUSTABLE

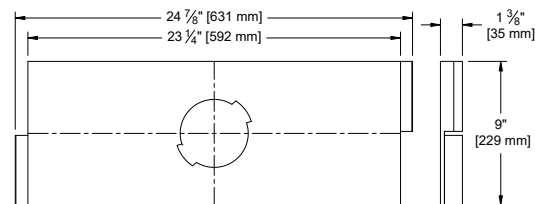


OPTION - New Pan



OPTION - Dropped Pan

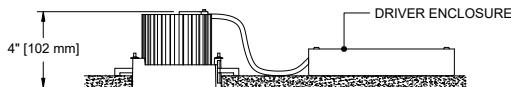
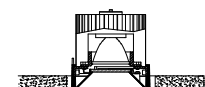
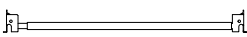
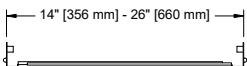
for use in Armstrong® T-Bar ceilings



1287 Hanger Bar comes standard with Bracket Pan & IC/NIC

Maximum Extension: 26"

OPTION - Bracket Pan



FIXED

