



**Project Name:**

**Specifier:**

**Distributor:**

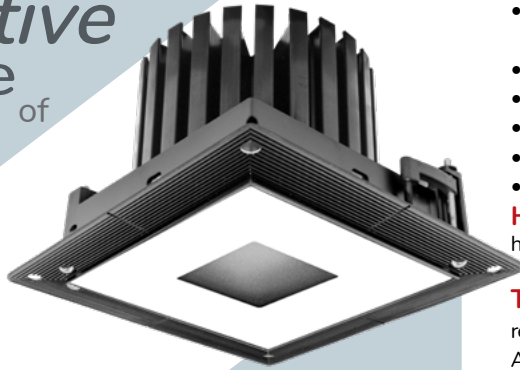
**Quantity:**

**Type:**

**Signature:**

## GR-F Series

The  
*Innovative*  
Line  
of



# LED Lighting Solutions

**GRF** Series in low to medium ceiling heights typically found in residential, commercial or retail applications. GRF series fixtures feature a flat trim surface that blends seamlessly with the ceiling construction. The Graffiti™ fixtures provide cost effective LED lighting solutions. As the creative spirit of its name implies, Graffiti™ systems provide all the quality SLI has grown famous for over the last 25 years, but at reduced lead times, affordable price points and innovative technologies that will liberate your creative flair.

**THERMAL MANAGEMENT:** Proprietary high performance aluminum black heatsink for maximum LED life

## ADJUSTABLE/FIXED

### SPECIFICATIONS

**MOUNTING** - Recessed in architectural ceiling. Butterfly brackets and Hanger bars included with housing and mounting pans.

- **RM** - Open fixture for retrofit for remodel in existing ceilings
- **IC** - Housing for new construction where insulation comes in contact with fixture
- **NIC** - Housing for new construction where IC not required
- **NP** - For New construction
- **DP** - Pan for dropped ceilings
- **BP** - Pan for metal studs
- **CP** - Chicago Plenum

**HOUSING** - C1/C2 Fixed housing is smaller size than Lutron/EldoLED Fixed housing (see page 3 for details)\*

**TRIM** - One piece die cast aluminum, flanged or flangeless trim with a 1/2" regress bevel and overlap for flange. Available for wet locations. Accommodates up to 1" ceiling thickness as standard.

- **ZT/ZST** - for use in plaster/GWB ceilings
- **FT/FST** - for use in architectural ceilings

### ELECTRICAL

- **Standard 0-10v (C1)** Dimming down to 1%
  - **TRIAC/ELV (C2)** Dimming down to 1%
  - **EldoLED 0-10v (E1)** Logarithmic Dimming down to 0.1%
  - **EldoLED Dali (E2)** Dimming down to 0.1%
  - **EldoLED 0-10v (E3)** Linear Dimming down to 0.1%
  - **Lutron Hi-lume EcoSystem 1% (LTB)** Hi-lume 1% with Fade-to-Black (former H-Series) digital EcoSystem Driver
  - **Lutron Hi-lume Premier 0.1% (LTP)** Hi-lume Premier 0.1% with Fade-to-Black digital EcoSystem
  - **EM Pack** Dimming driver with emergency battery backup
- All drivers are field replaceable\*

Specifier/Installer is responsible for testing & validating compatibility of any control equipment used. Additional conductors may be required depending on dimming system.

### LED



- **CZ- Citizen** 2700 / 3000 / 3500K / 4000K, 90+CRI, 50+R9
- **AD- Ambient Dim™** 3000 to 1900K / 3000 to 2200K / 2700 to 2200K, 97 CRI
- **XT- Xicato** Available on request

**LENS/OPTICS** - Interchangeable reflector provides multiple beam patterns. Field-changeable optics:

- **Spot (15°)** • **Narrow (24°)** • **Flood (38°)** • **Wide Flood (60°)**
- Optional lenses available for aperture include Solite and Veiling Acrylic. Accepts two optical accessories and an optional trim mounted lens.

**FINISH** - Black powder paint housing. Aperture trim available in white as standard. Can be field painted to match ceiling finish.

**WARRANTY** - 5 year limited on LED and driver. See website for details.

**LABELS** -  US tested to UL standards 1598, Dry/Damp and Wet listings. IC/Airtight,  Supports CA Title 24 part 6 compliance meeting JA8 Requirements in many combinations. Chicago Plenum Available.



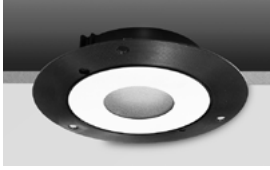
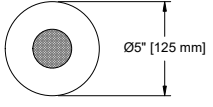
**ORDER INFO** **CODE**  
**Graffiti™ Housing** **GRF**

**INFORMATION- TRIM**

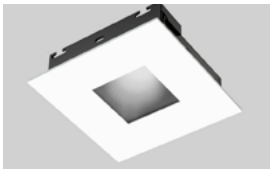
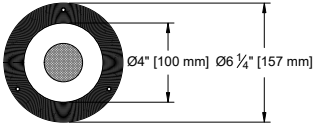
**Housing**



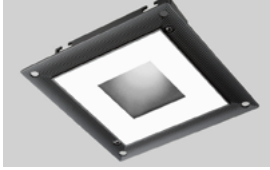
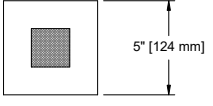
ROUND/ FLANGED



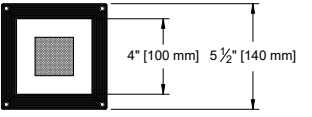
ROUND / FLANGELESS



SQUARE / FLANGED



SQUARE / FLANGELESS



- RM = Retrofit
- IC = IC/Airtight
- NIC = Non IC
- NP = New Pan
- DP = Dropped Pan
- BP = Bracket Pan
- CP = Chicago Plenum

**Source/System Watts/Delivered lm/LPW (Lumens/watt)**  
Values Based on Round, Fixed, with Flood optic

- CZ14** = Citizen 14.2W / 1468lm / 104LPW
- CZ20** = Citizen 20.7W / 1981lm / 96LPW
- AD14** = Ambient Dim 14.6W / 944lm / 64LPW
- AD20** = Ambient Dim 21.3W / 1636lm / 77LPW (AD 3019 only)
- XT** = Xicato - Contact Factory

**Type**

- F = Fixed
- A = Adjustable

**CCT**

- |                    |                                          |
|--------------------|------------------------------------------|
| <b>Fixed White</b> | <b>Ambient Dim</b>                       |
| <b>27</b> = 2700K  | <b>3019</b> = 3000K to 1900K             |
| <b>30</b> = 3000K  | <b>3022</b> = 3000K to 2200K (AD14 only) |
| <b>35</b> = 3500K  | <b>2722</b> = 2700 to 2200K (AD14 only)  |
| <b>40</b> = 4000K  |                                          |

**Beam**

- SP = Spot
- NF = Narrow flood
- FL = Flood
- WF = Wide flood

**Driver**

- C1** = 0-10V dimming, 1%, 120-277v
- C2** = TRIAC/ELV 2-wire, 1% 120V only (Leading/Trailing Edge)
- E1** = EldoLED 0-10V Logarithmic Dim, 0.1%, 120-277v
- E2** = EldoLED DALI, 0.1%, 120-277v
- E3** = EldoLED 0-10V Linear Dim, 0.1%, 120-277v
- LTB** = Hi-lume 1% with Fade-to-Black (former H-Series) digital EcoSystem Driver, 120-277v (LDE1) \*\*Lutron & EldoLED require Inverter
- LTP** = Hi-lume Premier 0.1% with Fade-to-Black digital EcoSystem, 120-277v (PEQ0)
- EM\*\*** = Emergency Pack

**PHOTOMETRICS**

**Graffiti™ Trim** **GRTF**

**Shape**

- RD = Round
- SQ = Square

**Trim**

- |                        |                                 |                               |
|------------------------|---------------------------------|-------------------------------|
| <b>FT</b> = Flanged    | <b>FST*</b> = Flanged Shower    |                               |
| <b>ZT</b> = Flangeless | <b>ZST*</b> = Flangeless Shower | <small>*Lens Required</small> |

**Finish** **WHT**

WHT = White

**Lens** **79A / 91A**

- 91A** = Solite
- 79A** = Frosted
- None

\*Visit website for further photometric data or Click Here

\*LED Technology rapidly changes. Please consult factory for latest specs and photometry.

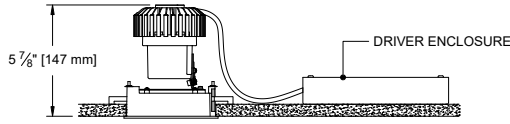
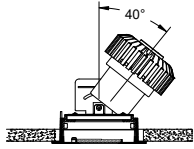
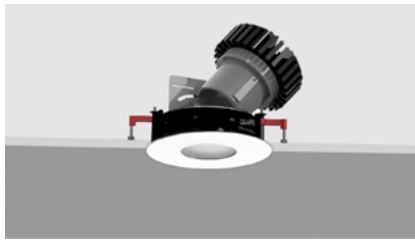
[\\* CLICK HERE to view Accessories for Trims.](#)

# INFORMATION- HOUSING

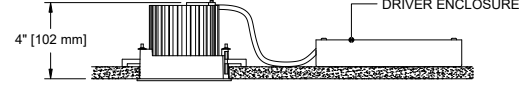
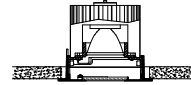
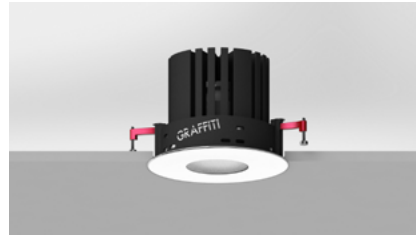
RETROFIT

For easy installation in existing ceilings.

**ADJUSTABLE**



**FIXED**

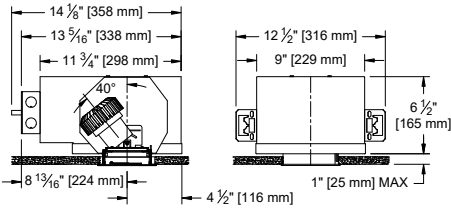
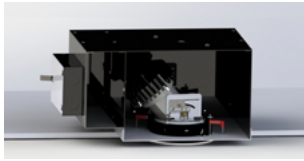


IC/NIC/C

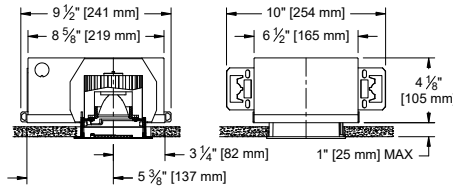
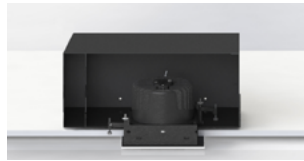
For projects requiring housings or IC rated fixtures.

1287 Hanger Bars comes standard with fixed and adjustable housing (see below for hanger bar dimensions).

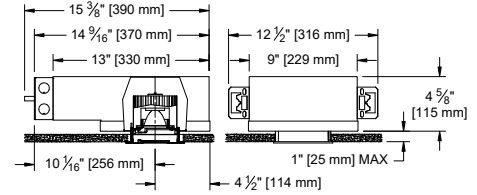
**ADJUSTABLE** All Drivers



**FIXED** C1/C2 Drivers



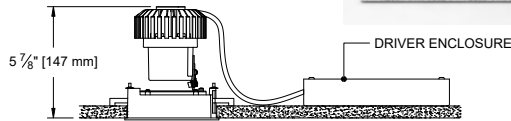
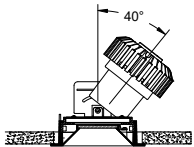
**FIXED** LUTRON / ELDO Drivers



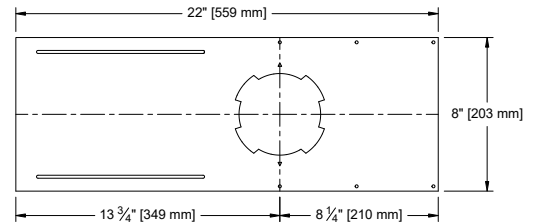
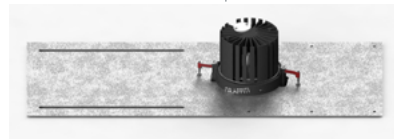
PAN

For new construction applications not requiring a housing.

**ADJUSTABLE**

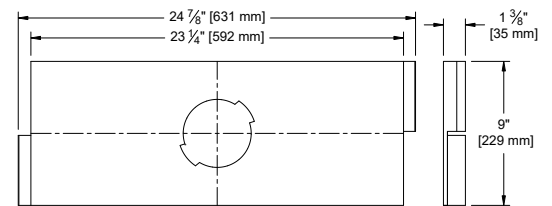
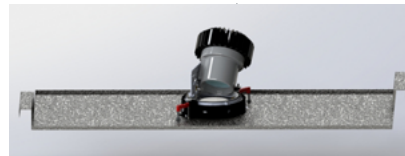


**OPTION - New Pan**



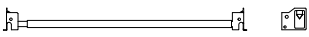
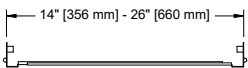
**OPTION - Dropped Pan**

for use in Armstrong® T-Bar ceilings

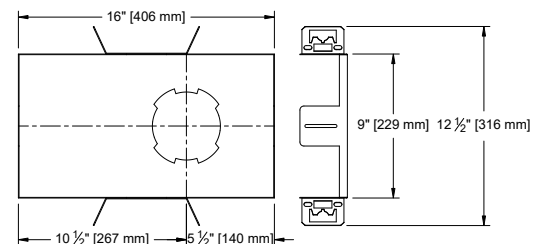


1287 Hanger Bar comes standard with Bracket Pan & IC/NIC

Maximum Extension: 26"



**OPTION - Bracket Pan**



**FIXED**

