



GRAPPA  
LIGHTING



SpecialtyLighting  
INDUSTRIES

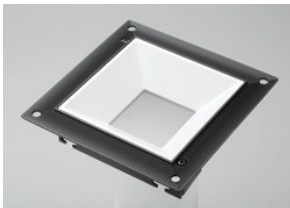
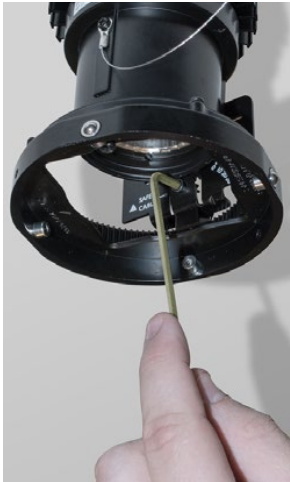




## PUSHING BACK BOUNDARIES

Graffiti is the innovative new line of LED lighting solutions from Specialty Lighting Industries. Highly adjustable and hallmarked by superior light quality, the new Graffiti fixtures provide cost effective LED lighting solutions. As the creative spirit of its name implies, Graffiti systems provide all the quality SLI has grown famous for over the last 25 years, but at reduced lead times, affordable price points and innovative technologies that will liberate your creative flair.

Allen wrench allows easy beam adjustments from below, after Graffiti assembly is installed. Mounting rings provide sturdy modularity for going round or square.



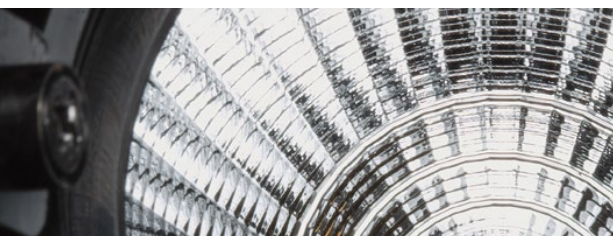
INTRODUCING A RUGGED  
LED WORKHORSE

GRAFFITI delivers all the quality and rugged reliability you've come to expect from SLI. And now, with our AMBIENT DIM technology, true halogen-quality dimming brings enticing warmth to LED lighting solutions for hospitality and residential applications. Whether at full output or dimmed, Graffiti delivers an astounding 98 CRI, providing superior color rendering.





Private Residence – Pia DeLeon, Designer



Graffiti fixtures utilize the right offerings of LED light engines that provide choice for the lighting designer. Whether it is CRI, initial color point consistency, R9 values or other metrics, Graffiti provides to the designer with source choice.

Graffiti fixtures are available in Fixed, Adjustable and wall wash models. The Fixed model is ideal for shallow ceilings, needing only 4" of plenum space, while the Adjustable model requires 7.5" plenum and the wall wash is 5.6". The adjustment feature enables hot aim, 359° pan and 37° tilt.





Ambient Dim® is a technology that integrates a diverse color temp range from 1900 to 3000. With advanced technological advances, Color Rendering Index (CRI) retains a 90+ rating. The end result is a retention of lighting color illumination that is not lost when dimming is lowered. Color warmth retains its value from a low CT of 1900 up to the highest level of 3000.

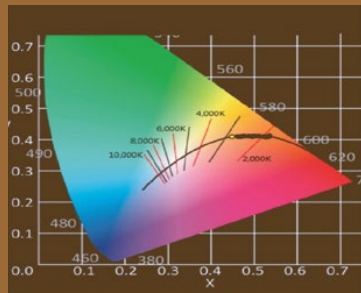
### THE DRIVER

The driver is another core piece to the Graffiti line's commitment to reliability and flexibility in selecting control protocol. The Graffiti line offers:

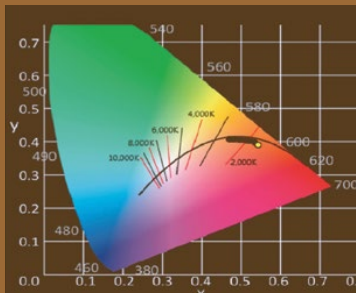
- **Standard** - Leading Edge and Trailing Edge 3% Dimming, and 0-10 offerings, dimming down to 1%
- **Lutron Hilume** – Lutron 2-wire and 3-wire EcoSystem – Dimming down to 1%- Available with soft on- Fade-to-black
- **EldoLED** – 0-10, DALI and DMX options – Dimming down to 0.1%

### FOLLOWING THE BLACK BODY LOCUS

AMBIENT DIM

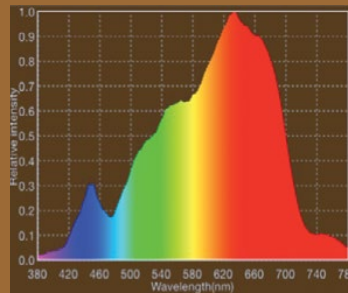


INCANDESCENT A19 LAMP

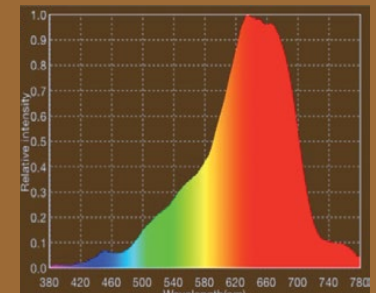


### PLUS HIGH CRI AND HIGH R9

3000 CCT FULL OUTPUT



1900 CCT 5% OUTPUT



Ambient Dim™ technology from SLI makes the Graffiti fixtures ideally suited for hospitality and residential settings. Here, both price and performance are key value drivers. As an optional feature, Ambient Dim enables Graffiti fixtures to match both the color and warmth created via incandescent sources through the entire dimming range but with all the efficacy of LEDs.



Private Residence – Pia DeLeon, Designer



Private Residence – Florida

Dim-to-warm applications, long the province of low voltage, is now open to LED solutions with an all InGaN or Blue LED base, and all color change is created via phosphor conversion processes.

### DRIVER OPTIONS

S1= 0-10V dim, 1%, 120-277

L2= Lutron Hi-lume 1% 2-wire LED Driver  
(120v forward phase only)

L3= Lutron Hi-lume 1% 3-wire / EcoSystem, 120-277v

L5= Lutron 5-Series EcoSystem LED Driver, 5%, 120-277v

LTB= Dimming down to 1%, Soft-on, Fade-to-Black

T1= TRIAC/ELV 2-wire, 3% 120v only  
(Leading/Trailing Edge)

E1= EldoLED 0-10v LogarithmicDim, 0.1%, 120-277v

E2= EldoLED DALI, 0.1%, 120-277v

E3= EldoLED 0-10v Linear Dim, 0.1%, 120-277v



## TAKING LED LIGHTING TO NEW LEVELS OF PRECISION CONTROL AND INNOVATIVE DESIGN

### LIGHT SOURCE OPTIONS

When it comes to controlling the quality of light, beam, effect and color are important attributes to master. With Graffiti, lighting design professionals can choose from three primary sources, each offering different strengths:

- Xicato is a remote phosphor solution and is often the lighting designers' 'go-to' source. Its hallmarks are a 1x2 SDCM initial color consistency, a 5-year color maintenance warranty, and amazing color metrics in the Artist series.
- Citizen is an CoB array with a proven record of reliability, competitive cost and high efficacies. This source provides a 3 SDCM initial color consistency and standard CRI of 90 and R9 of 69.

#### Xicato Series LED Light Engines

Module	Ordering Code	Chip Model	Color Temp. (CT)	Color Rendering (CRI)	Driver Selection mA	Output (Lm)	Typical Power Consumption (Watts)	Efficacy (Lm/W)
2000 lm	LEDX927	XTM-A	2700	98				
	LEDX930		3000		700 (HO)	1400	12.9	109
	LEDX935		3500		500 (HE)	1055	9	117
	LEDX940		4000		350 (HU)	800	6.2	129

#### Ambient Dim™ LED Light Engines

Ordering Code	Product Series	Color Temp. (CT)	Color Rendering (CRI)	Driver Selection	Output (LM)	Chip Efficacy	Chip Load (Watts)	Total Load (Watts)
LED-AD	AD™	3000-1900	90+	350 (HU)	1179	81	12.7	14.5

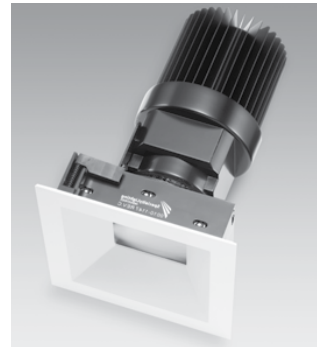
#### Citizen LED Light Engines

Ordering Code	Chip Model	Color Temp. (CT)	Color Render (CRI)	Current (mA)	Driver Selection	Output (LM)	Chip Efficacy	Chip Load (Watts)	Total Load (Watts)
LEDZ927	CLU026	2700	90+	350	HU	1578	118	12.3	14.8
				500	HE	2176	103	18.2	21
LEDZ930	CLU026	3000	90+	350	HU	1643	111	12.3	14.8
				500	HE	2265	107	18.2	21
LEDZ935	CLU026	3500	90+	350	HU	1665	112	12.3	14.8
				500	HE	2297	109	18.2	21
LEDZ940	CLU026	4000	90+	350	HU	1669	112	12.3	14.8
				500	HE	2479	118	18.2	21



## PREMIUM PERFORMANCE & AFFORDABLE AMBIENCE

Graffiti represents a “standard” product line created by Specialty Lighting Industries. We are renowned for our ability to custom-design and manufacture “specialty” fixtures. Most often, these are created for very high-end projects, such as the owner’s suite in the Dallas Cowboys NFL stadium. With Graffiti, lighting designers and building owners can now access the same quality look and performance.

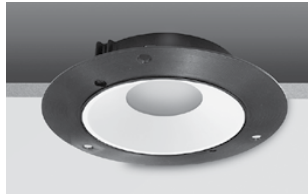


### FIXTURE OPTIONS | GR Series

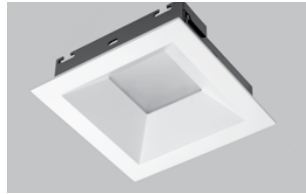
ROUND / FLANGED



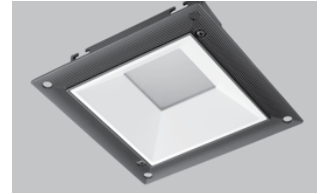
ROUND / FLANGELESS



SQUARE / FLANGED

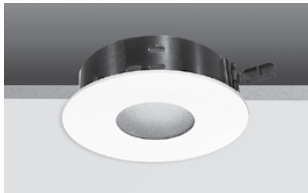


SQUARE / FLANGELESS

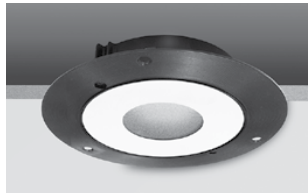


### FIXTURE OPTIONS | GRF Series

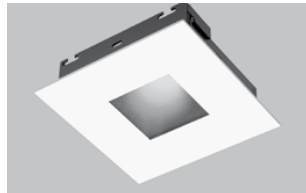
ROUND / FLANGED



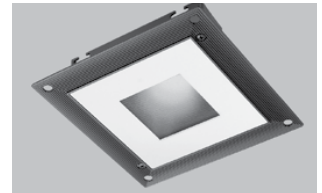
ROUND / FLANGELESS



SQUARE / FLANGED



SQUARE / FLANGELESS

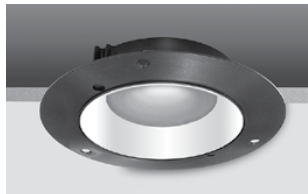


### FIXTURE OPTIONS | GRO Series

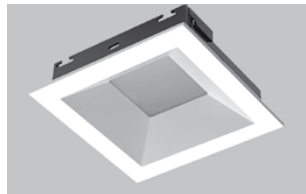
ROUND / FLANGED



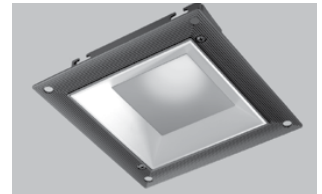
ROUND / FLANGELESS



SQUARE / FLANGED



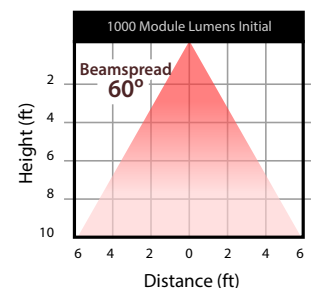
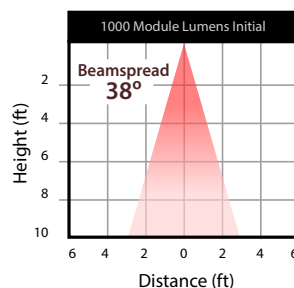
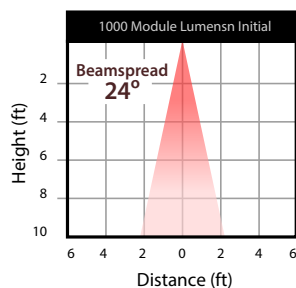
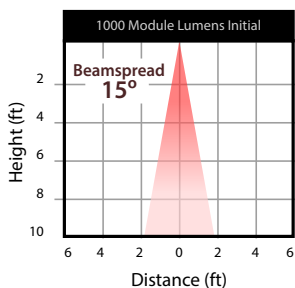
SQUARE / FLANGELESS



### PHOTOMETRICS

SAMPLE FOR MODEL GRO-AD14-RD Series

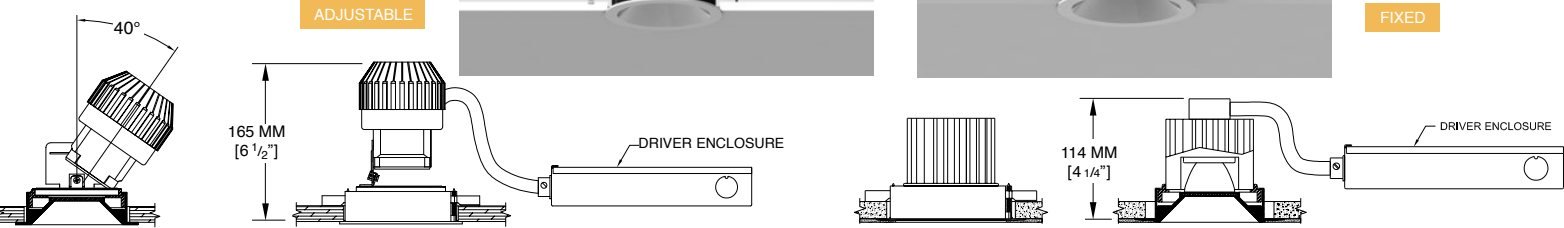
Visit [www.graffitilighting.com](http://www.graffitilighting.com) for further photometric data



# ADAPTIVE DESIGN FOR MULTIPLE CEILING APPLICATIONS

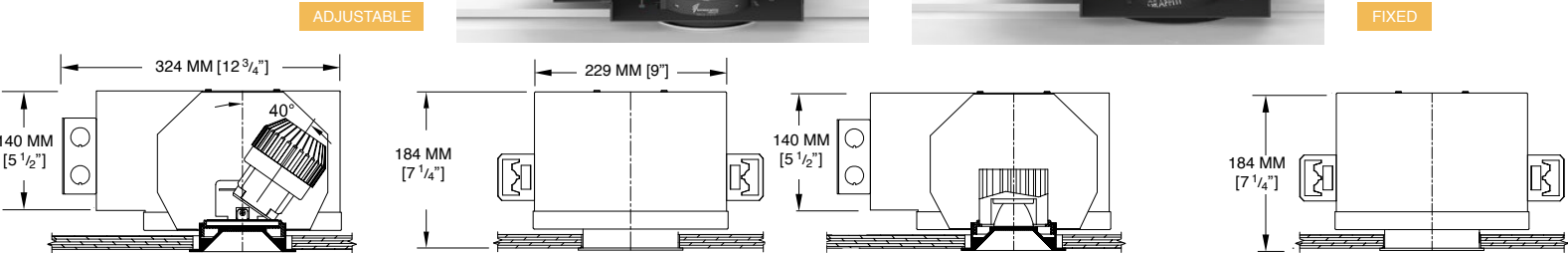
## RETROFIT

For easy installation in existing ceilings



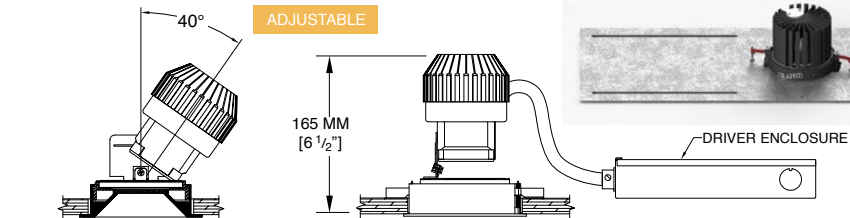
## IC / NIC

For projects requiring housings or IC rated fixtures



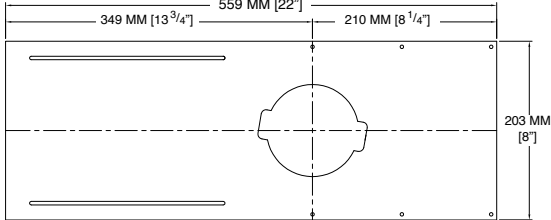
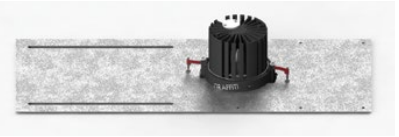
## PAN

For new construction applications not requiring a housing



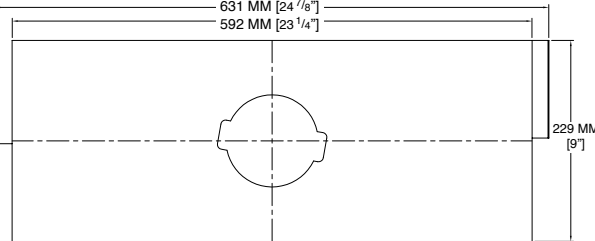
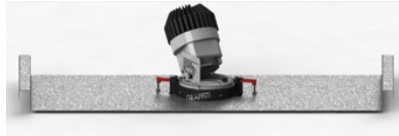
### OPTION - New Pan

For new construction studs/joists ceilings



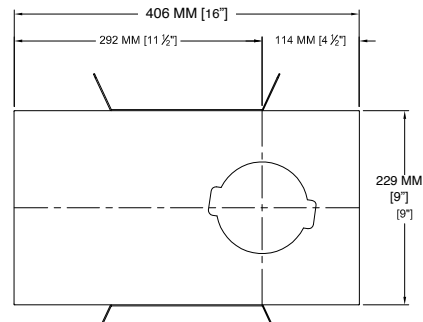
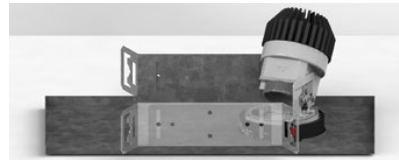
### OPTION - Dropped Pan

For suspended or t-bar ceilings



### OPTION - Bracket Pan

For new construction metal/wood stud ceilings





# WALL WASHER

DEFINING EXCELLENCE  
IN QUALITY

Wall washing in low to medium ceiling heights typically found in residential, commercial or retail applications. The wall wash fixture creates consistent and even illumination from ceilinging down using our proprietary Supertex™ lens. Fixture provided with LED positioned for optimal performance. The Graffiti™ fixtures provide cost effective LED lighting solutions. As the creative spirit of its name implies, Graffiti™ systems provide all the quality SLI has grown famous for over the last 25 years, but at reduced lead times, affordable price points and innovative technologies that will liberate your creative flair

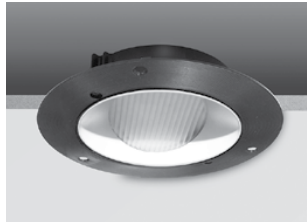


## FIXTURE OPTIONS | GRW Series

ROUND / FLANGED



ROUND / FLANGELESS



SQUARE / FLANGED



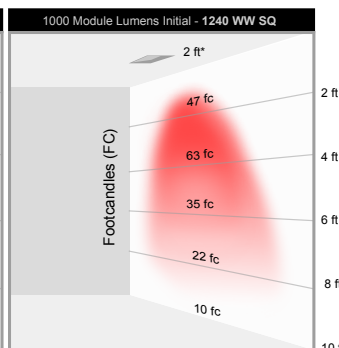
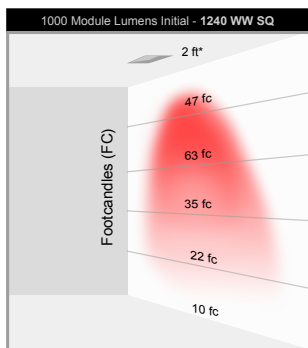
SQUARE / FLANGELESS



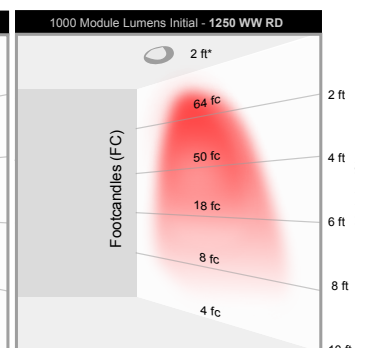
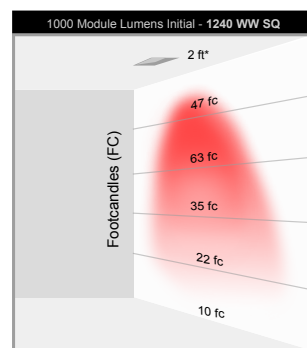
## PHOTOMETRICS

FOR MODEL GRW

Visit [www.graffitilighting.com](http://www.graffitilighting.com) for further photometric data



\*Based on 2 ft distance from light source to highlighted wall



\*Based on 2 ft distance from light source to highlighted wall

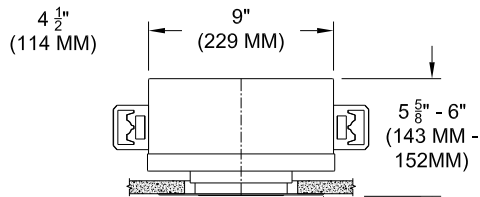
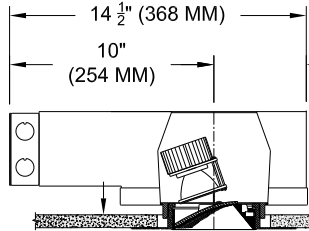
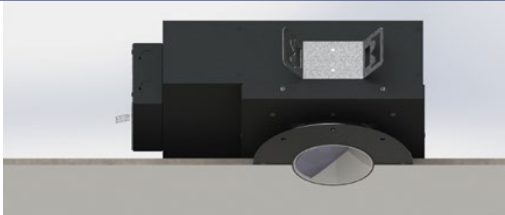




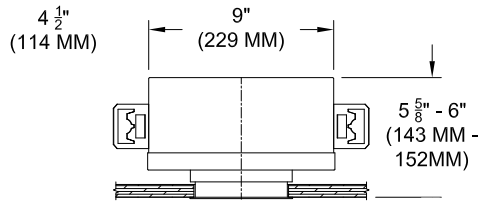
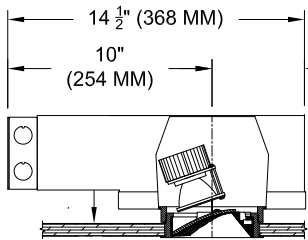
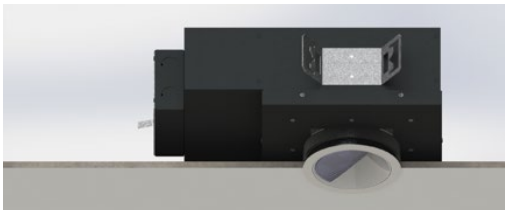
ADAPTIVE DESIGN FOR MULTIPLE CEILING APPLICATIONS

IC HOUSING is the same just no vent holes.

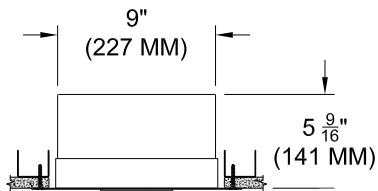
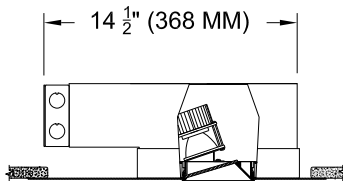
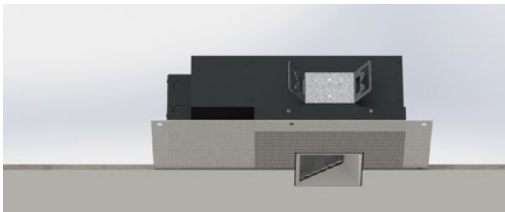
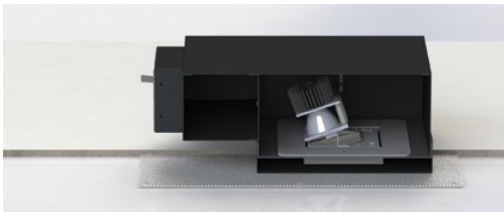
GRW-PHNIC/IC-RD



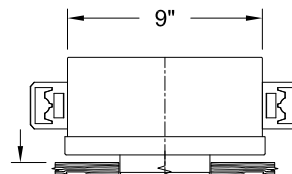
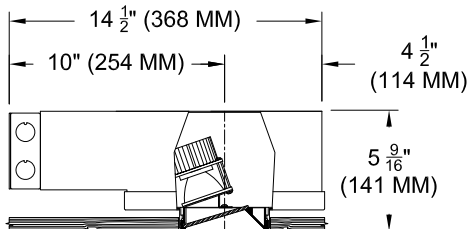
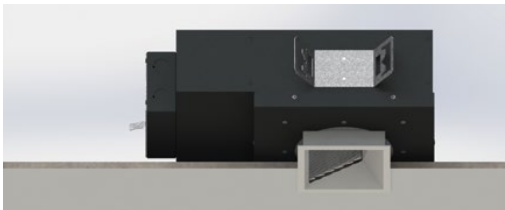
GRW-UHNIC/IC-RD



GRW-PHNIC/IC-SQ



GRW UHNIC/IC-SQ



# MR-16



## ORDER INFO

Graffiti™ Housing

## CODE

GRW-M

### Housing

IC = IC

NIC = Non IC

IH = International Housing (Open Housing- no transformer included)

AH = Airtight Housing (Non IC)

### Source/Wattage/Lumens/Delivered

MR37 = MR-16 / 37W Max for IC/Airtight

MR50 = MR-16 / 50W

SMRA = SORAA Retrofit

### Type

WW = Wall Washer

### Transformer

TX = Magnetic

EXS= Electronic SORAA

### Voltage

120V

277V

Graffiti™ Trim

GRWT-M

### Shape

RD = Round

SQ = Square

### Trim

FT = Flanged

ZT = Flangeless

FST\* = Flanged Shower

ZST\* = Flangeless Shower

\*Lens Required

### Finish

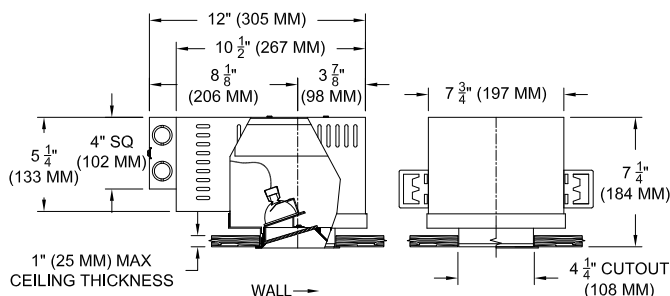
WHT

WHT = White

### Lens

82A = Frosted Supertex

\* CLICK HERE to view Accessories for Trims.



## ORDER INFO

Graffiti™ Housing

## CODE

GR-M

### Housing

IC = IC

NIC = Non IC

IH = International Housing (Open Housing- no transformer included)

AH = Airtight Housing (Non IC)

### Source/Wattage/Lumens/Delivered

MR37 = MR-16 / 37W Max for IC/Airtight

MR50 = MR-16 / 50W

SMRA = SORAA Retrofit

### Type

F = Fixed

A = Adjustable

### Transformer

TX = Magnetic

EXS= Electronic SORAA

### Voltage

120V

277V

Graffiti™ Trim

GRT-M

### Style

GRO = Open Regressed

GRF = Flat

GR = Standard Regressed

### Shape

RD = Round

SQ = Square

### Trim

FT = Flanged

ZT = Flangeless

FST\* = Flanged Shower

ZST\* = Flangeless Shower

\*Lens Required

### Finish

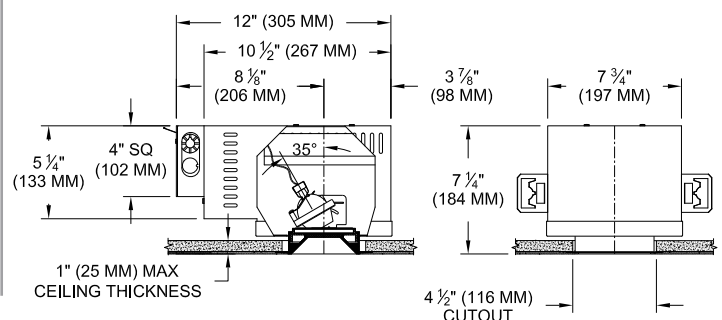
WHT

WHT = White

### Lens

91A = Solite

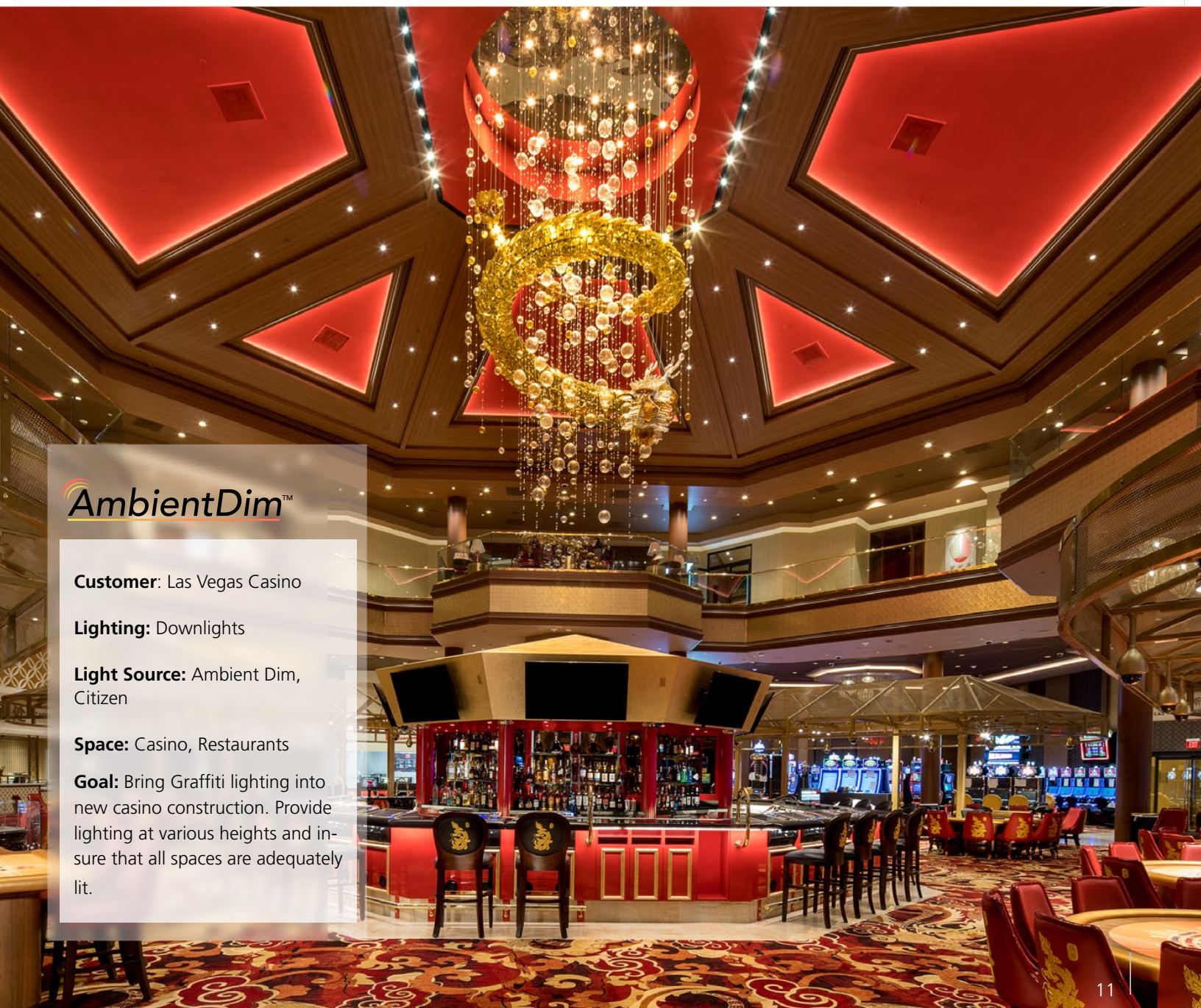
\* CLICK HERE to view Accessories for Trims.







EXPERIENCE, TEAMWORK & KNOWLEDGE  
DEFINE WHO WE ARE



**AmbientDim™**

**Customer:** Las Vegas Casino

**Lighting:** Downlights

**Light Source:** Ambient Dim,  
Citizen

**Space:** Casino, Restaurants

**Goal:** Bring Graffiti lighting into new casino construction. Provide lighting at various heights and insure that all spaces are adequately lit.



## ABOUT SPECIALTY LIGHTING INDUSTRIES

Specialty Lighting Industries manufactures high-end lighting solutions for the world's most demanding clients. All of our fixtures are flawlessly finished and minimalist in design. They blend in so that everything else stands out.

Since its inception, Specialty Lighting Industries has provided innovative lighting solutions for leading hotels, corporations, retail shops, private residences, galleries and museums.

We're found anywhere good light matters: in ballrooms and boardrooms, Harrah's or Hermes, from Ferragamo to the Frick.



1000 Flanged Point Source lighting used at the Silversmith Hotel Downtown Chicago

**CITIZEN**  
Micro HumanTech

**LUTRON®** **XICATO®** **eldoLED®**  
your product | our drive

Mobile Enabled



Graffitilighting.com



[Specialtylightingindustries.com](http://Specialtylightingindustries.com)

1306 Doris Ave., Ocean, NJ 07712, USA 732.517.0800

03/18