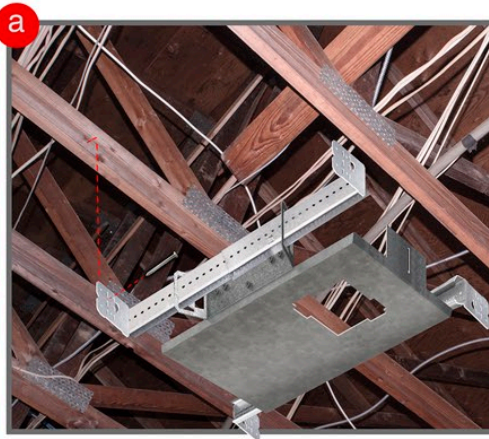
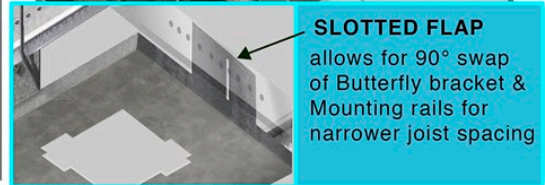




Exposed Ceiling Joists



**Step A-** Anchor mounting rails into joists with screws. Slide Bracket Pan with butterfly brackets into mounting rails. Clip mounting rails to secure.



**SLOTTED FLAP**  
allows for 90° swap of Butterfly bracket & Mounting rails for narrower joist spacing

**Step B-** Bottom of bracket pan should either be flush with bottom of ceiling joists or 1/8" higher than bottom of joists



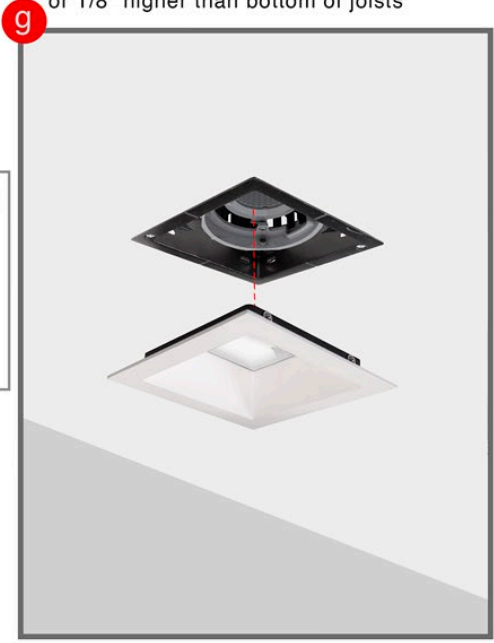
Ceiling cutout size for Square trim  $4 \frac{5}{8}$ "



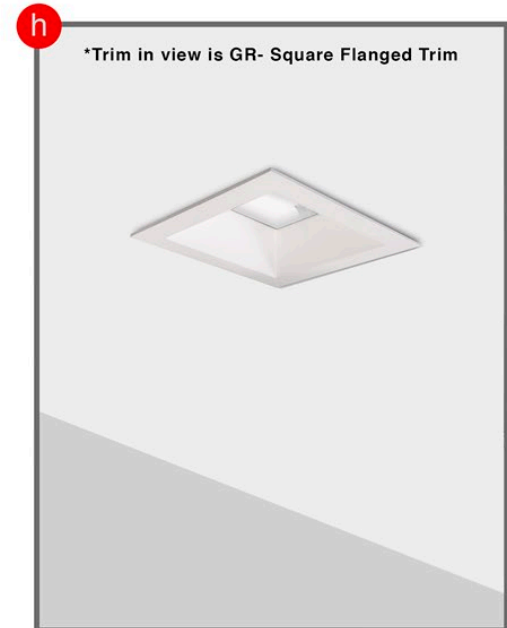
**Step C-** Paint over ceiling before installation.  
**Step D-** Slide receiver into ceiling.



**Step E-** Tighten screws to clamp receiver to ceiling. Finalize electrical wiring/connections.  
**Step F-** Slide light assembly into receiver. Ball plungers(4) on light assembly clicks into 4 slots on receiver (see detail above)



**Step G-** After light assembly has been installed Click flanged trim ball plungers (4) into receiver slots.



\*Trim in view is GR- Square Flanged Trim

**Step H-** Make sure trim ball plungers clicks into receiver to secure.

**How to secure with safety cables?**



Safety cable clip clicks into Plaster Receiver safety cable

Push-pin Fastener

Push-pin fastener locks trim safety cable trim to lamp assembly



**Bracket Pan Flanged Square Trim Instruction Sheet for GRF, GR, GRO, GRW Series**

**TRIMS AVAILABLE**

