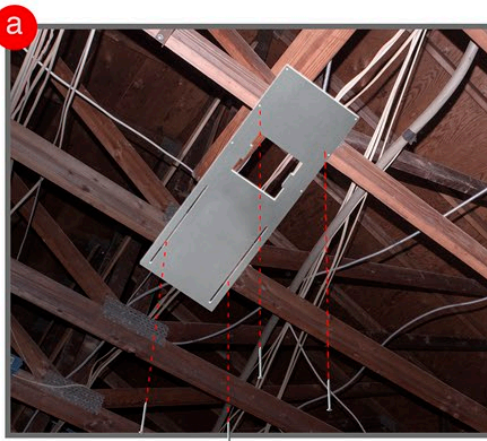


Exposed Ceiling Joists



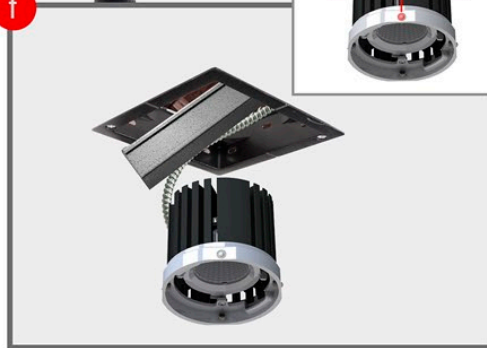
**Step A-** Install New Pan into ceiling joists. New Pan is reversible.



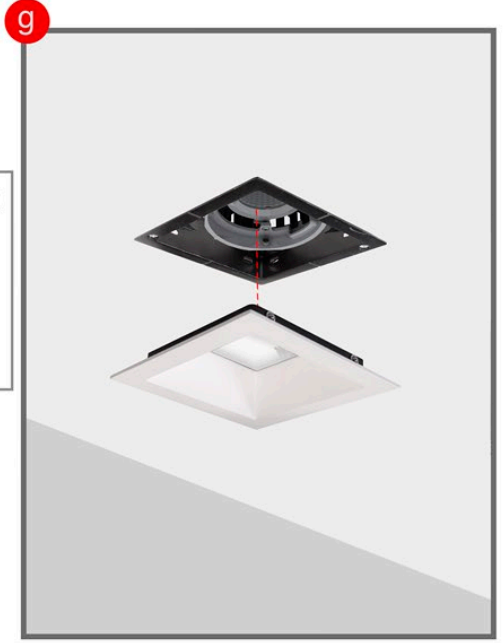
**Step B-** Place GWB over New Pan.



**Step C-** Paint over ceiling before installation.  
**Step D-** Slide receiver into ceiling.



**Step E-** Tighten screws to clamp receiver to ceiling. Finalize electrical wiring/connections.  
**Step F-** Slide light assembly into receiver. Ball plungers(4) on light assembly clicks into 4 slots on receiver (see detail above)



**Step G-** After light assembly has been installed Click flanged trim ball plungers (4) into receiver slots.



**Step H-** Make sure trim ball plungers clicks into receiver to secure.

**How to secure with safety cables?**



**New Pan Flanged Square Trim Instruction Sheet for GRF, GR, GRO, GRW Series**

