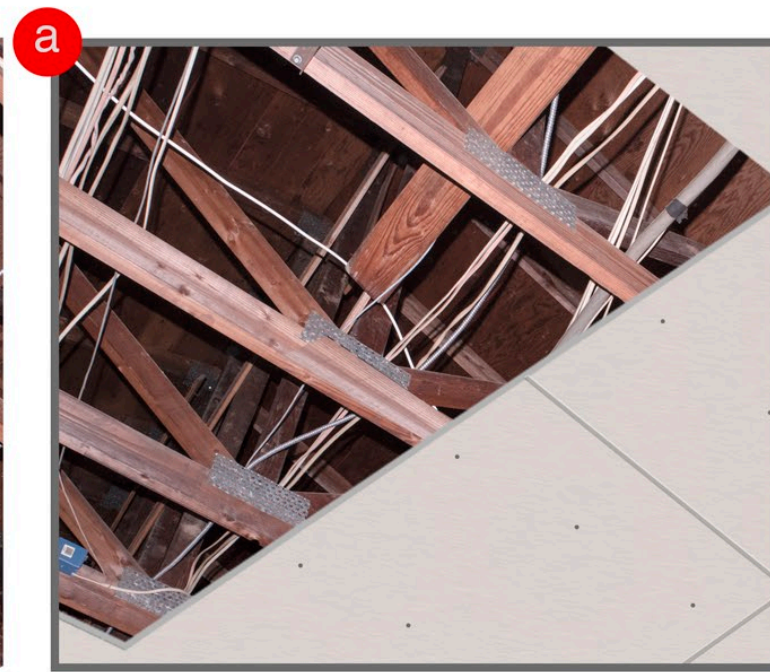




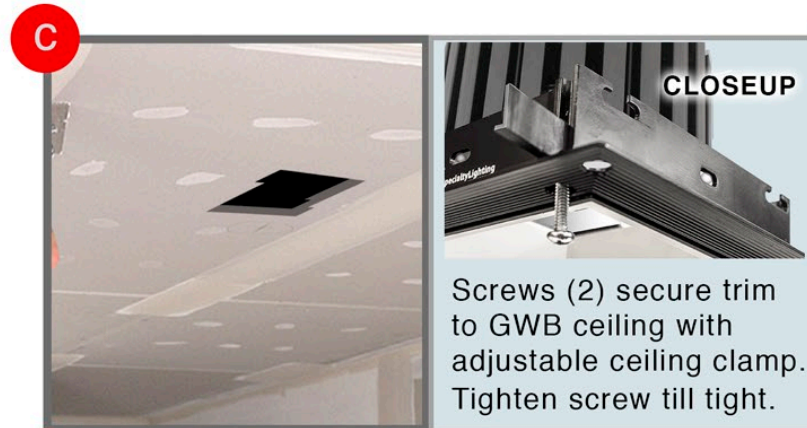
Exposed Ceiling Joists



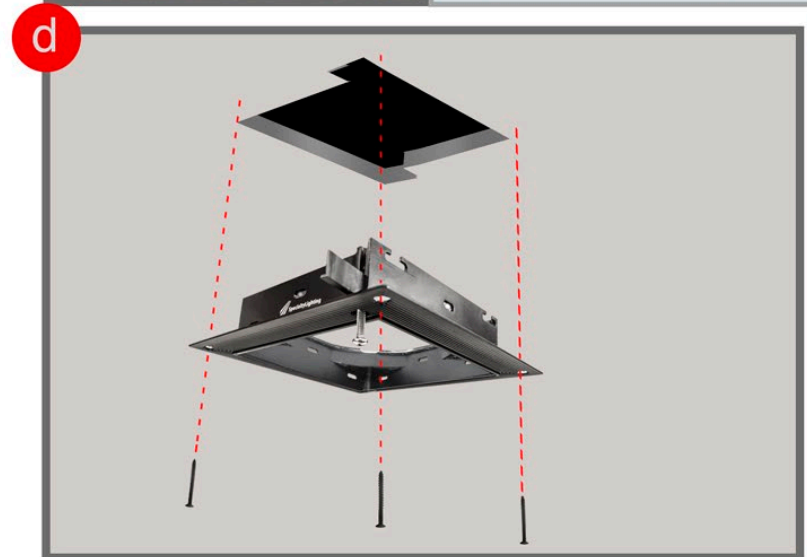
Step A- Install Drywall/GWB ceiling



Step B- Cutout opening for light install. (Notches in square cutout are optional.)



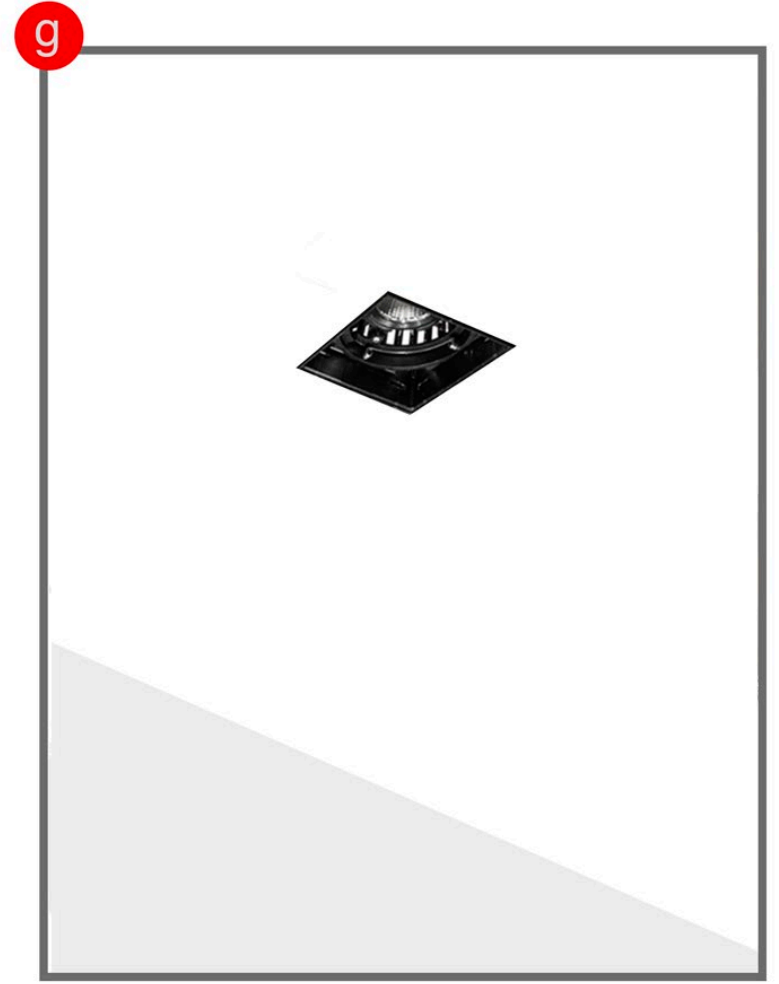
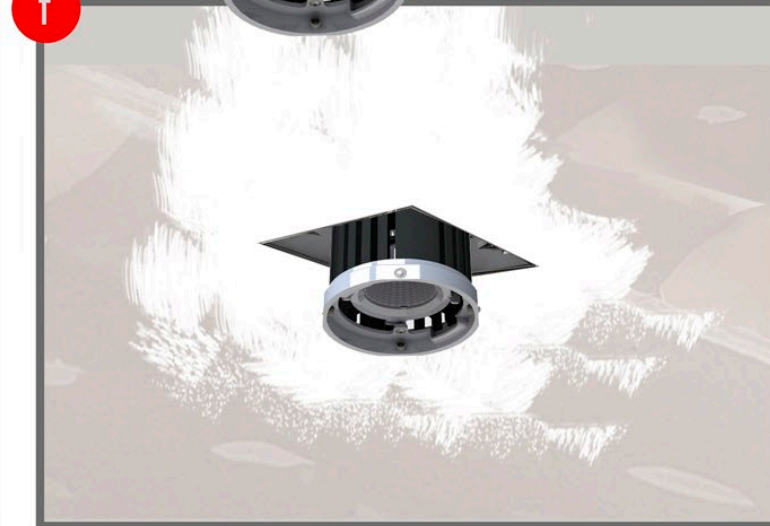
Screws (2) secure trim to GWB ceiling with adjustable ceiling clamp. Tighten screw till tight.



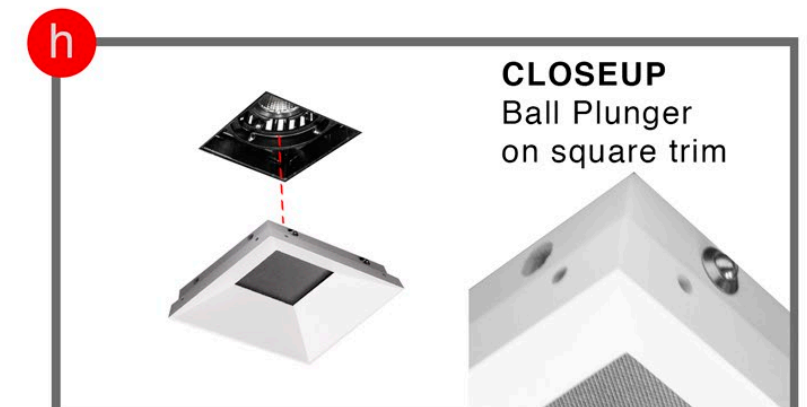
Step C- Slide receiver into cutout
Step D- Attach receiver with GWB screws (4).
See Closeup- tighten receiver to GWB Ceiling.



Step E- Plaster receiver flange. Finish Electrical.
Step E1- Apply tape & joint compound
Step F- Slide light assembly into receiver. Finish plastering GWB.



Step G- After plaster ceiling has dried, paint over the plaster ceiling.



CLOSEUP
Ball Plunger on square trim



*Trim in view is GR- Square Flangeless Trim

Step H- Make sure trim ball plungers clicks into receiver to secure.

How to secure with safety cables?



Safety cable clip clicks into Plaster Receiver safety cable

Push-pin Fastener

Push-pin fastener locks trim safety cable trim to lamp assembly



Retrofit Plaster Receiver/
Square ZT Trim Instruction Sheet for
GRF, GR, GRO, GRW Series

TRIMS AVAILABLE

