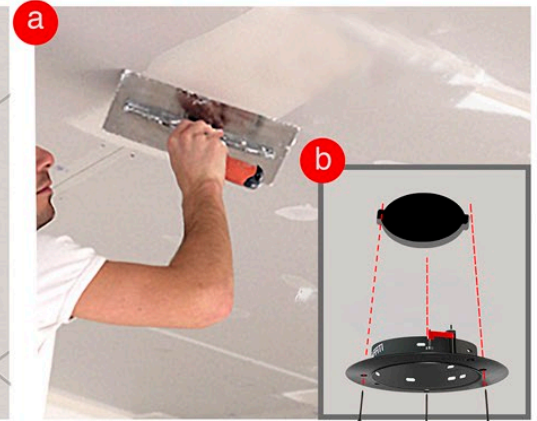




Step 1- Exposed Ceiling Joists



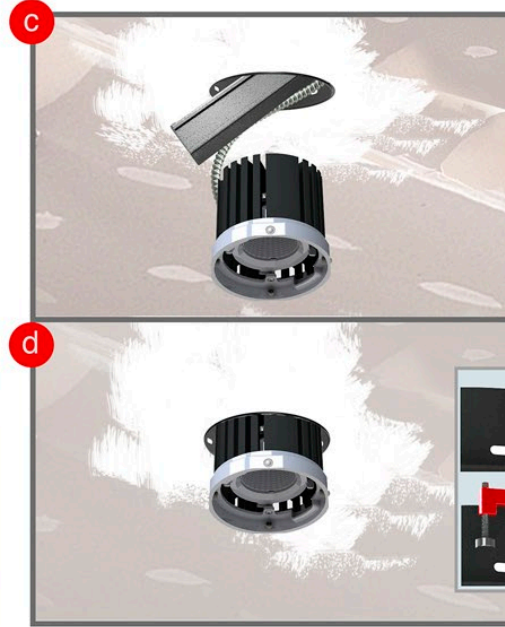
Step 2- Install GWB ceiling.



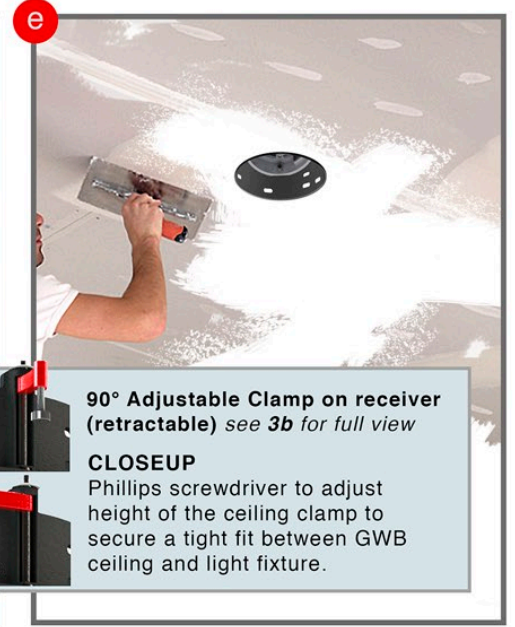
Step 3a- Apply tape & joint compound.
Step 3b- Cutout opening and install receiver



Step 4a- Plaster over receiver
Step 4b- Connect main electrical wiring to lighting fixture



Step 4c- Slide driver enclosure with light fixture into receiver. Enclosure rests on GWB.
Step 4d- Lock light fixture into receiver.



90° Adjustable Clamp on receiver (retractable) see 3b for full view
CLOSEUP
Phillips screwdriver to adjust height of the ceiling clamp to secure a tight fit between GWB ceiling and light fixture.

Step 4e- 1 or 2 coat plaster job over GWB ceiling. Painting optional depending on plaster finish



Step 5- Final step is to make sure trim ball plungers clicks into receiver to secure.



Retrofit Flangeless trim Plaster Receiver/ no Housing Instruction Sheet for GRF, GR, GRO, GRW Series

