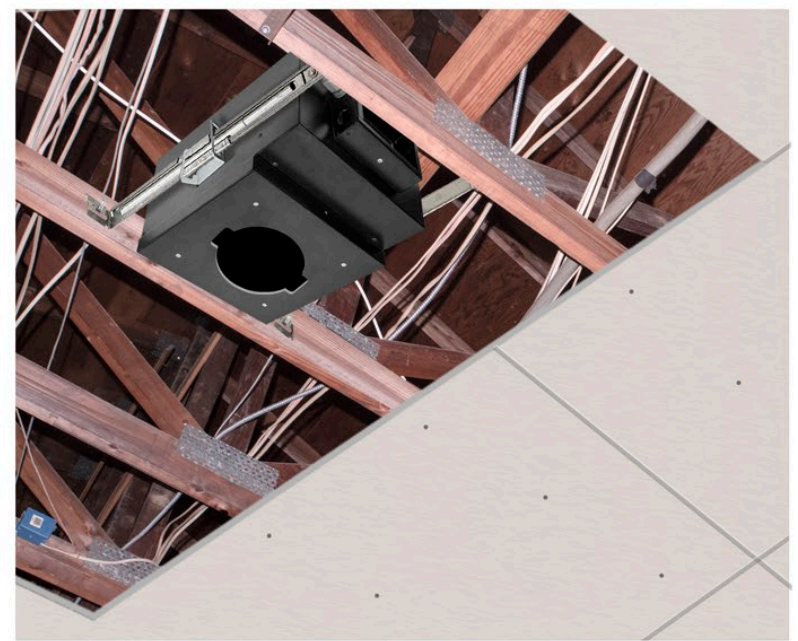




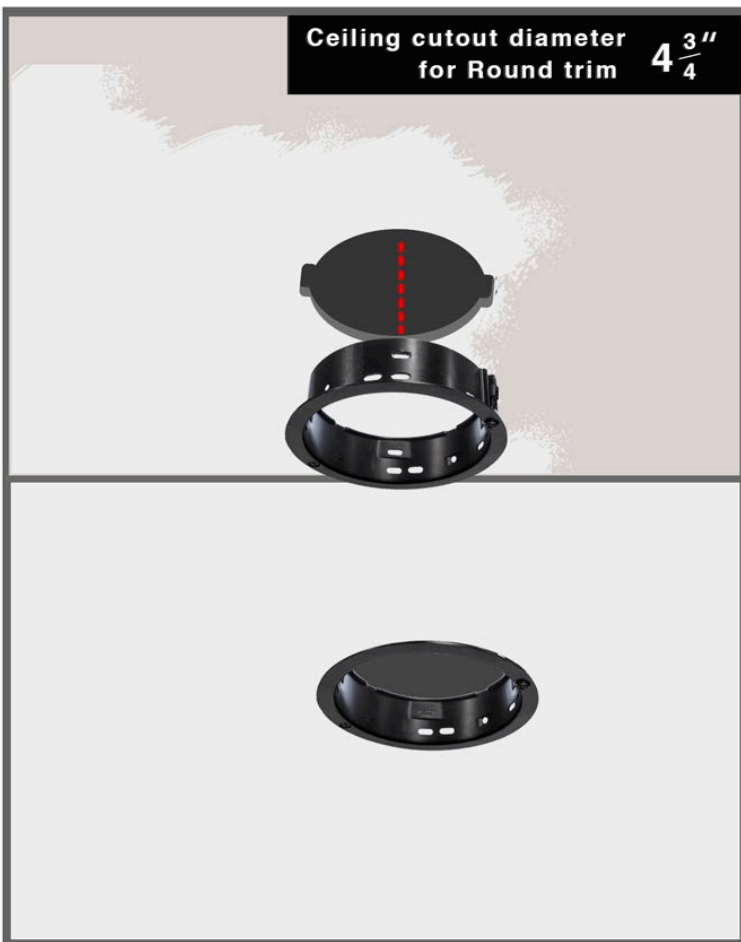
**Step 1-** Exposed Ceiling Joists



**Step 2-** Adjustable Mounting Rails anchor housing to ceiling joists with screws



**Step 3-** After housing is secured. Continue GWB ceiling install.

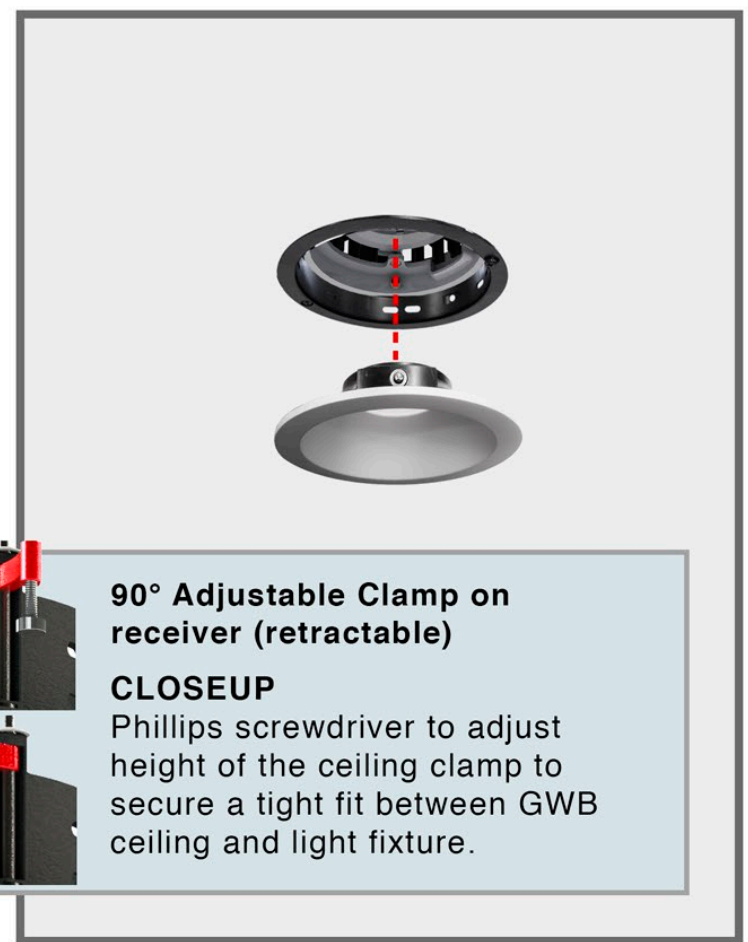


Ceiling cutout diameter for Round trim  $4 \frac{3}{4}$ "

**Step 4a-** Apply tape & joint compound  
**Step 4b-** Cutout opening. Paint GWB Ceiling.  
**Step 4c-** Install receiver with GWB Screws.



**Step E-** Finalize electrical wiring/connections. Then slide light assembly into receiver.  
**Step F-** Ball plungers(4) on light assembly clicks into 4 slots on receiver.



**Step G-** After light assembly locks into the flanged receiver, slide & lock flanged trim into the receiver.

**90° Adjustable Clamp on receiver (retractable)**  
**CLOSEUP**  
 Phillips screwdriver to adjust height of the ceiling clamp to secure a tight fit between GWB ceiling and light fixture.



**IMPORTANT**  
 Ball Plungers on round flanged trim and light assembly needs to click into receiver

\*Trim in view is GR- Round Flanged Trim

**How to secure with safety cables?**



Safety cable clip clicks into Receiver safety cable

Push-pin Fastener

Push-pin fastener locks trim safety cable trim to lamp assembly



**NIC Rated Flanged Round Trim w/Housing**  
**Instruction Sheet for**  
**GRF, GR, GRO, GRW Series**

**TRIMS AVAILABLE**



Repeat process for all GR-Round Flanged

