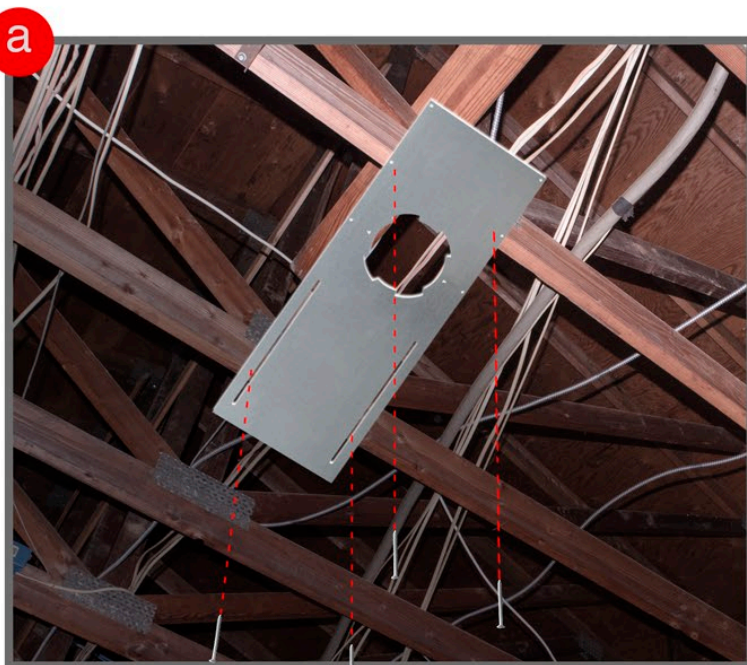
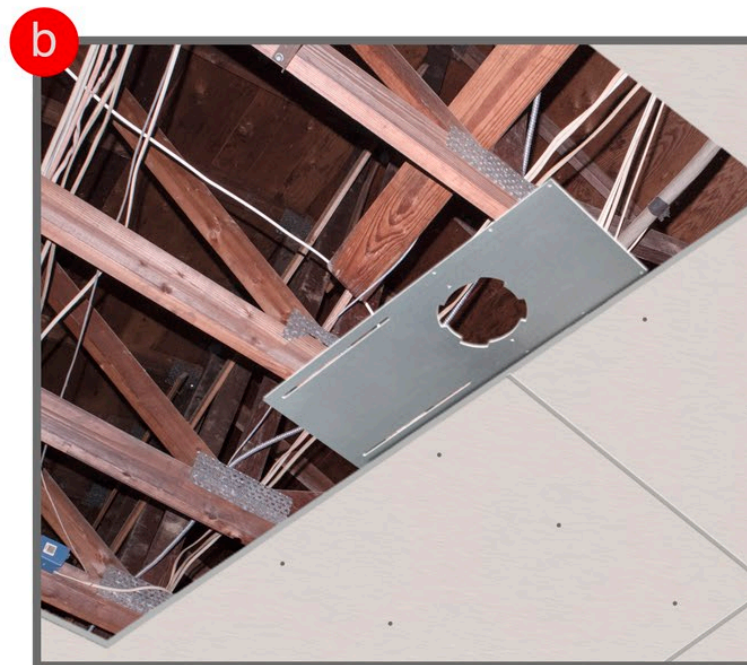




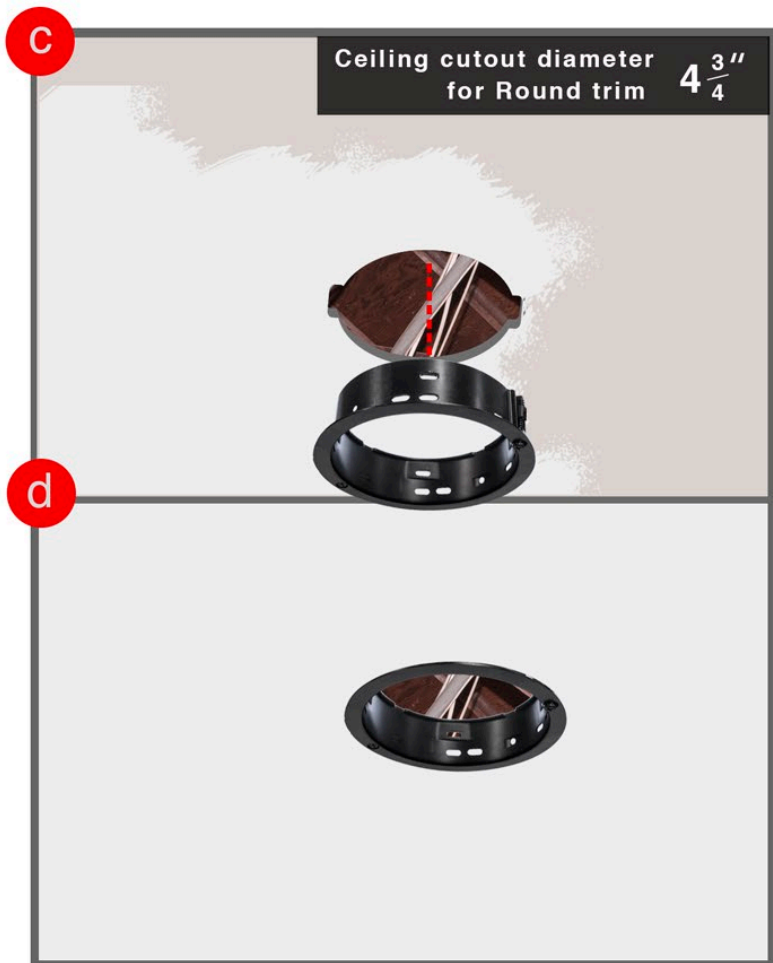
Exposed Ceiling Joists



Step A- Install New Pan into ceiling joists. Continue installing ceiling drywall. New pan is reversible.



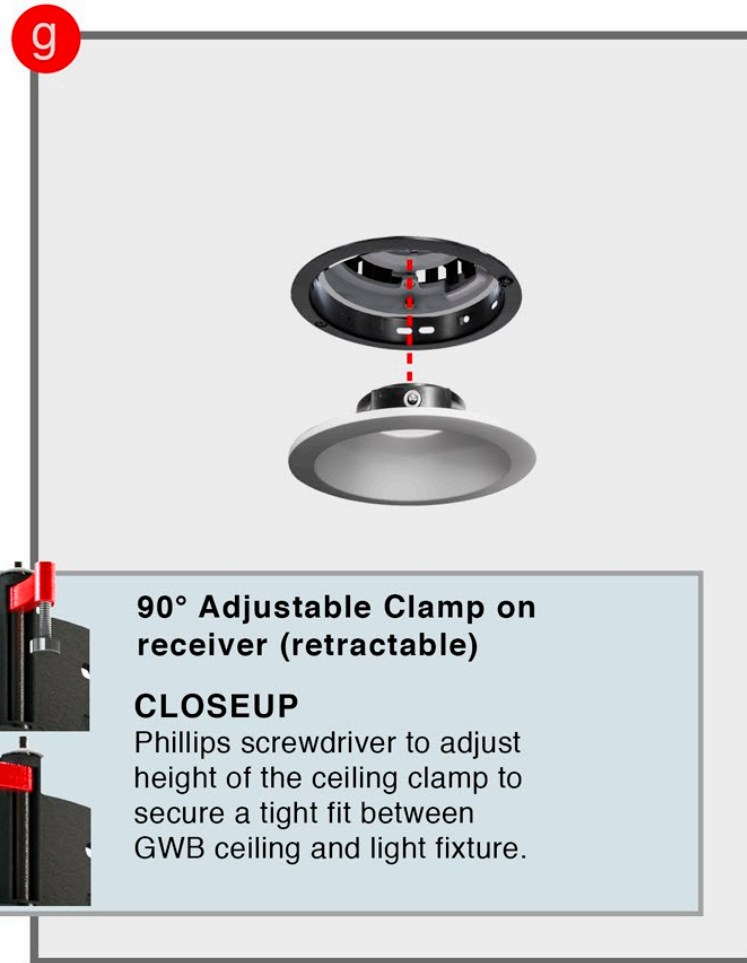
Step B- Apply tape & joint compound. Cutout opening and prep for painting ceiling.



Step C- Slide flange receiver into opening.
Step D- Tighten screws to clamp receiver to ceiling.



Step E- Finalize electrical wiring/connections. Then slide light assembly into receiver.
Step F- Ball plungers(4) on light assembly clicks into 4 slots on receiver.



Step G- After light assembly locks into the flanged receiver, slide & lock flanged trim into the receiver.

90° Adjustable Clamp on receiver (retractable)
CLOSEUP
Phillips screwdriver to adjust height of the ceiling clamp to secure a tight fit between GWB ceiling and light fixture.

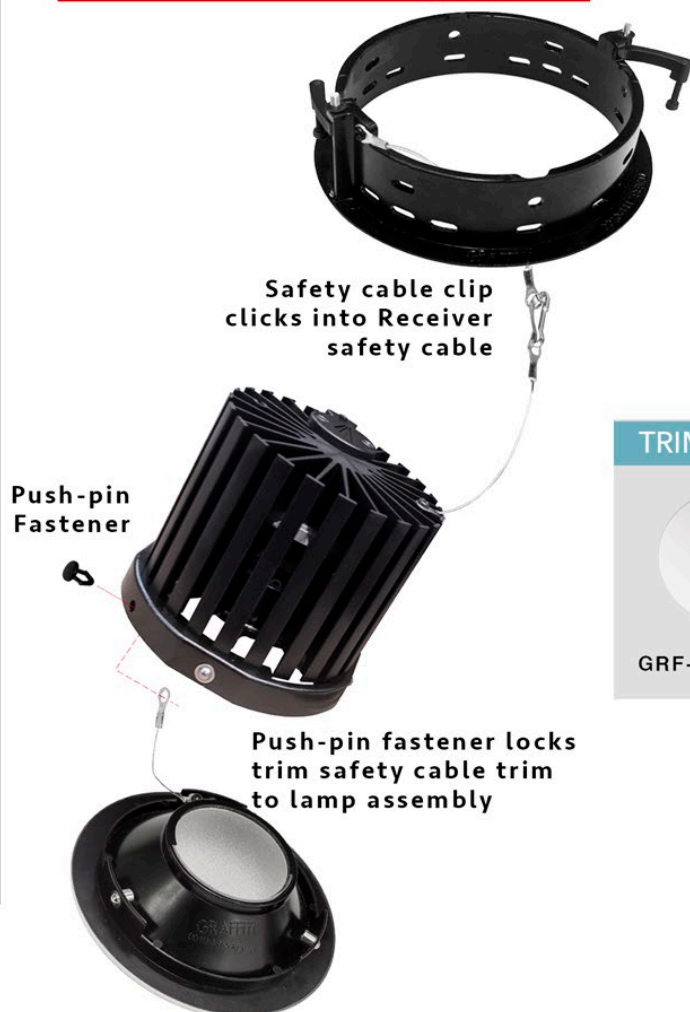


IMPORTANT
Ball Plungers on round flanged trim and light assembly needs to click into receiver

*Trim in view is GR- Round Flanged Trim

Repeat process for all GR-Round Flanged.

How to secure with safety cables?



Safety cable clip clicks into Receiver safety cable

Push-pin Fastener

Push-pin fastener locks trim safety cable trim to lamp assembly



New Pan Install Flanged Round Trim Instruction Sheet for GRF, GR, GRO, GRW Series

