

Light efficiency:



Output: 899 lm

Light quality:

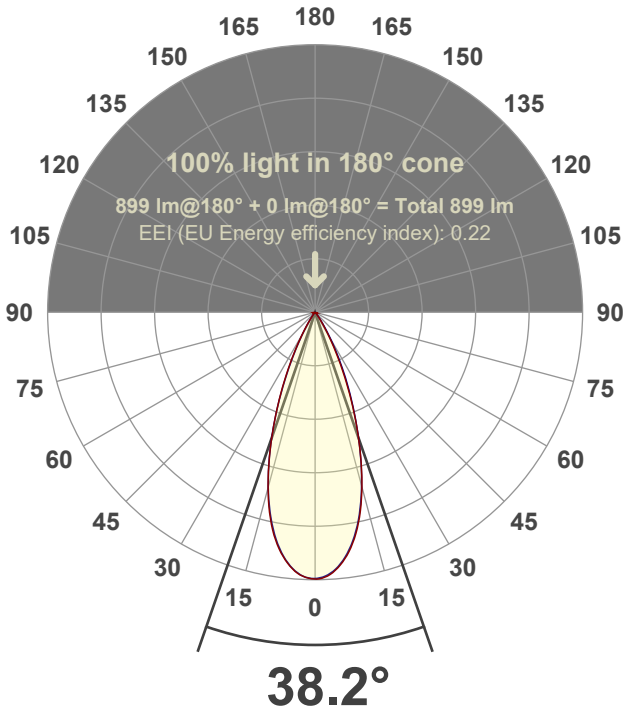


Peak: 2069 cd

Power: 15.0 W



Beam angle



Test number:

GR-F-A14-2722-FL-RD-91A-Rev2

Luminaire Model:

Graffiti Regress Round Fixed Downlight-A14-2722 38° Optic-Solite

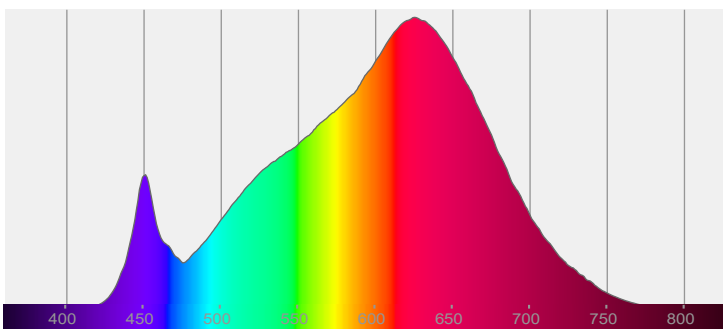
Date and time:

3/24/2022 7:06:07 PM

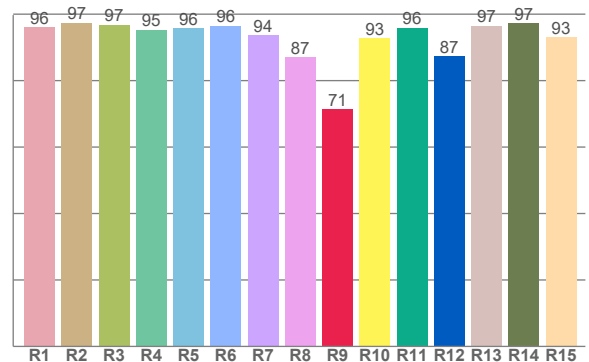
Delivered Lumens

899

Spectra



CRI: 94.8 (R1-R8)



Color parameters

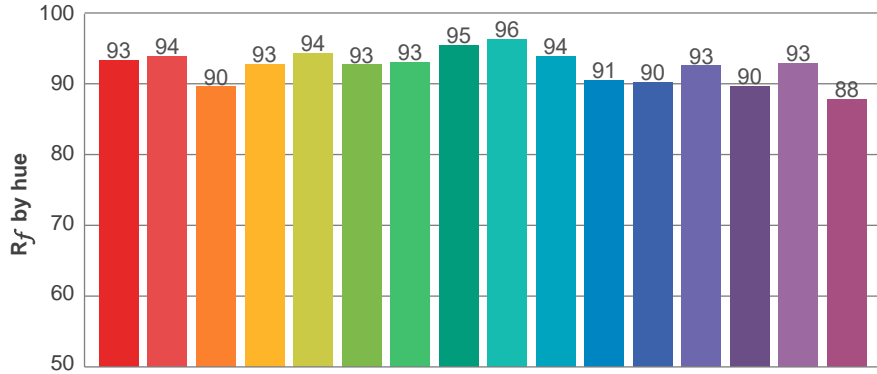
Color rendering index	Red component	Color fidelity	Color gamut	Color quality scale	Color coordinate cie 1931	Color coordinate cie 1931	Color coordinate	Color coordinate	Color diviation from black body
CRI	CRI R9	TM30 R _f	TM30 R _g	CQS	x	y	u	v	Δuv
94.8	71.3	92.5	102.1	91.3	0.447	0.401	0.258	0.348	-0.0023

R_f 92.5
Fidelity index R_f

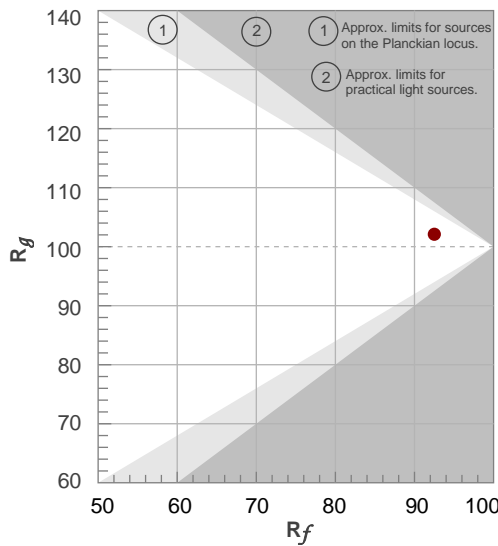
R_g 102.1
Gammut index R_g

TM30: 92.5

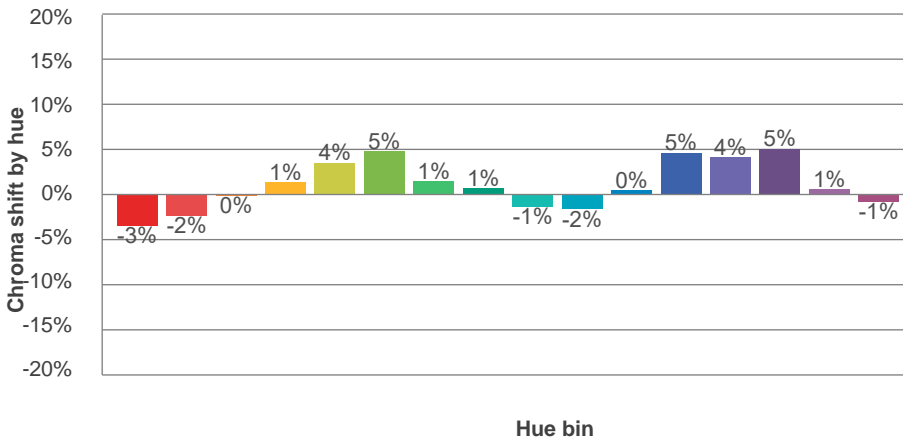
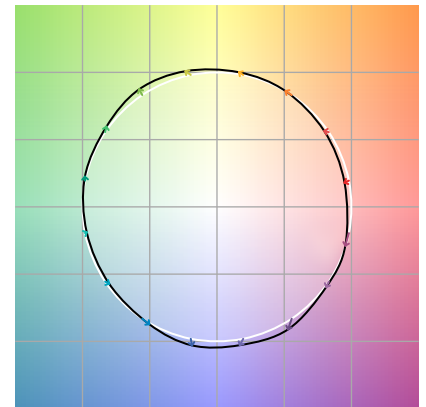
TM-30Color



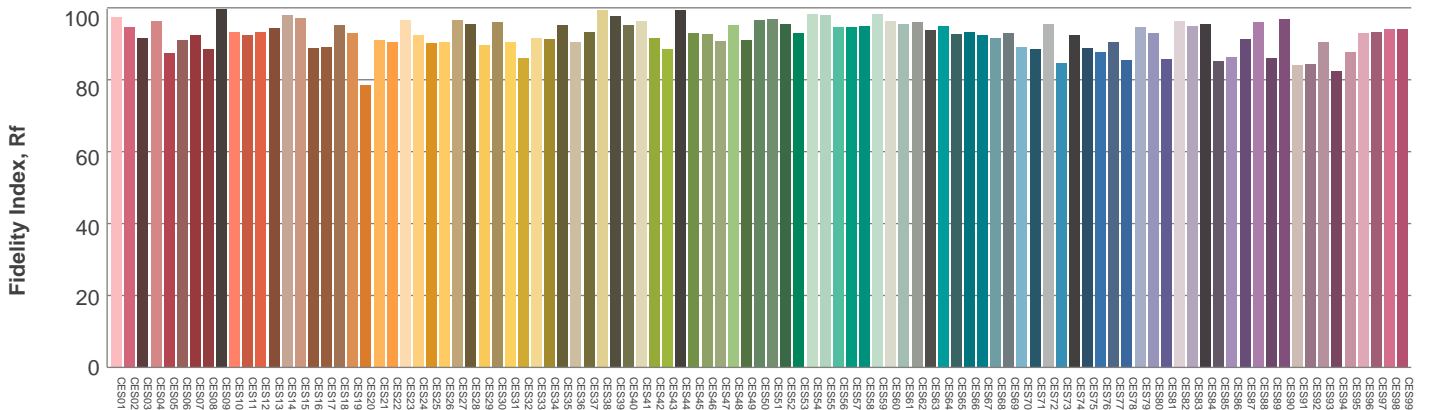
Hue Bin	R_f	Graphic shifts (%)	
		Chroma	Hue
1	93	-3%	-1%
2	94	-2%	3%
3	90	0%	5%
4	93	1%	4%
5	94	4%	3%
6	93	5%	0%
7	93	1%	-4%
8	95	1%	-3%
9	96	-1%	0%
10	94	-2%	3%
11	91	0%	7%
12	90	5%	2%
13	93	4%	-3%
14	90	5%	-7%
15	93	1%	-4%
16	88	-1%	-10%



Color vector graphics

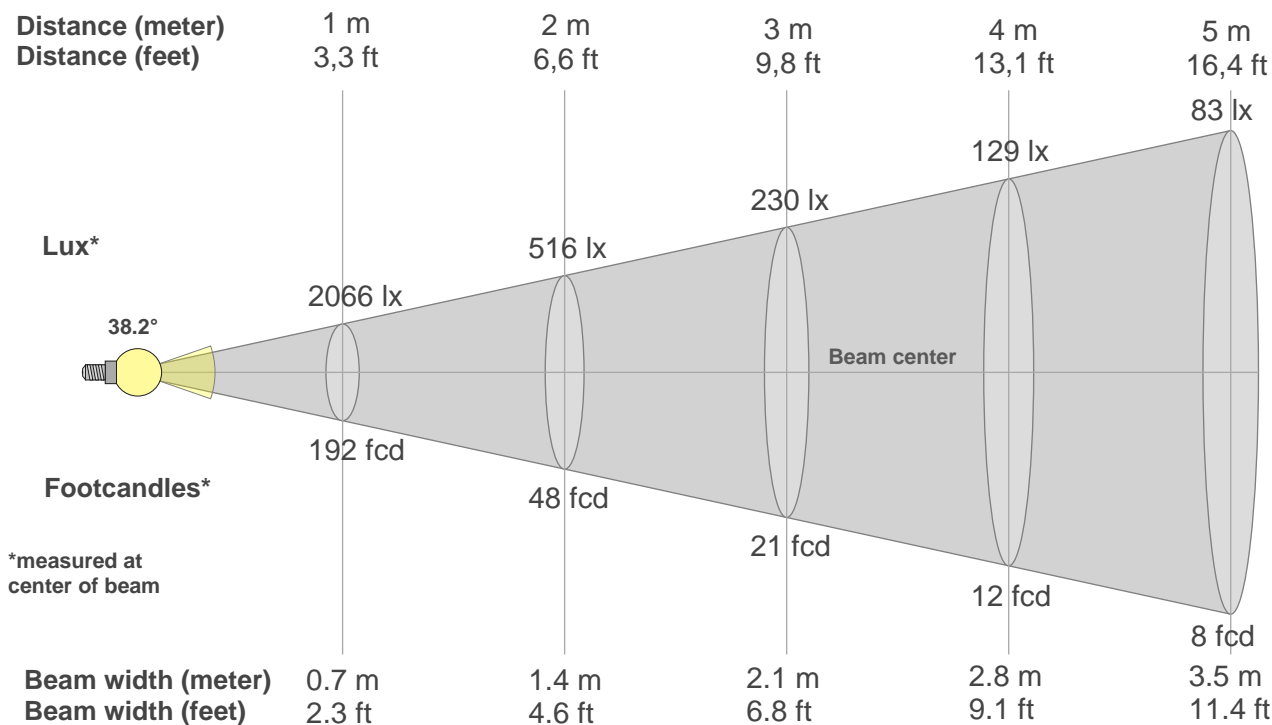


Color distortion



Color Evaluation Sample

Beam details



Beam intensities from 1-20m

1m	2m	3m	4m	5m	6m	7m	8m	9m	10m	11m	12m	13m	14m	15m	16m	17m	18m	19m	20m
3.3ft	6.6ft	9.8ft	13.1ft	16.4ft	19.7ft	23ft	26.2ft	29.5ft	32.8ft	36.1ft	39.4ft	42.7ft	45.9ft	49.2ft	52.5ft	55.8ft	59.1ft	62.3ft	65.6ft
2066lx	516lx	230lx	129lx	83lx	57lx	42lx	32lx	26lx	21lx	17lx	14lx	12lx	11lx	9lx	8lx	7lx	6lx	6lx	5lx
191.9fcd	48fcd	21.3fcd	12fcd	7.7fcd	5.3fcd	3.9fcd	3fcd	2.4fcd	1.9fcd	1.6fcd	1.3fcd	1.1fcd	1fcd	0.9fcd	0.7fcd	0.7fcd	0.6fcd	0.5fcd	0.5fcd

Intensities in 0° c-plane

0°	2°	4°	6°	8°	10°	12°	14°	16°	18°	20°	22°	24°	26°	28°	30°	32°	34°	36°	38°
2066	2055	2019	1959	1879	1772	1641	1488	1317	1135	952	774	609	461	333	230	152	102	69	47
100%	99%	98%	95%	91%	86%	79%	72%	64%	55%	46%	37%	29%	22%	16%	11%	7%	5%	3%	2%

Intensities in 90° c-plane

0°	2°	4°	6°	8°	10°	12°	14°	16°	18°	20°	22°	24°	26°	28°	30°	32°	34°	36°	38°
2066	2050	2011	1949	1865	1759	1631	1478	1309	1132	956	788	632	490	366	263	181	120	78	52
100%	99%	97%	94%	90%	85%	79%	72%	63%	55%	46%	38%	31%	24%	18%	13%	9%	6%	4%	3%

Intensities in 180° c-plane

0°	2°	4°	6°	8°	10°	12°	14°	16°	18°	20°	22°	24°	26°	28°	30°	32°	34°	36°	38°
2066	2057	2027	1967	1886	1782	1653	1498	1323	1138	950	771	605	455	325	223	148	96	63	42
100%	100%	98%	95%	91%	86%	80%	73%	64%	55%	46%	37%	29%	22%	16%	11%	7%	5%	3%	2%

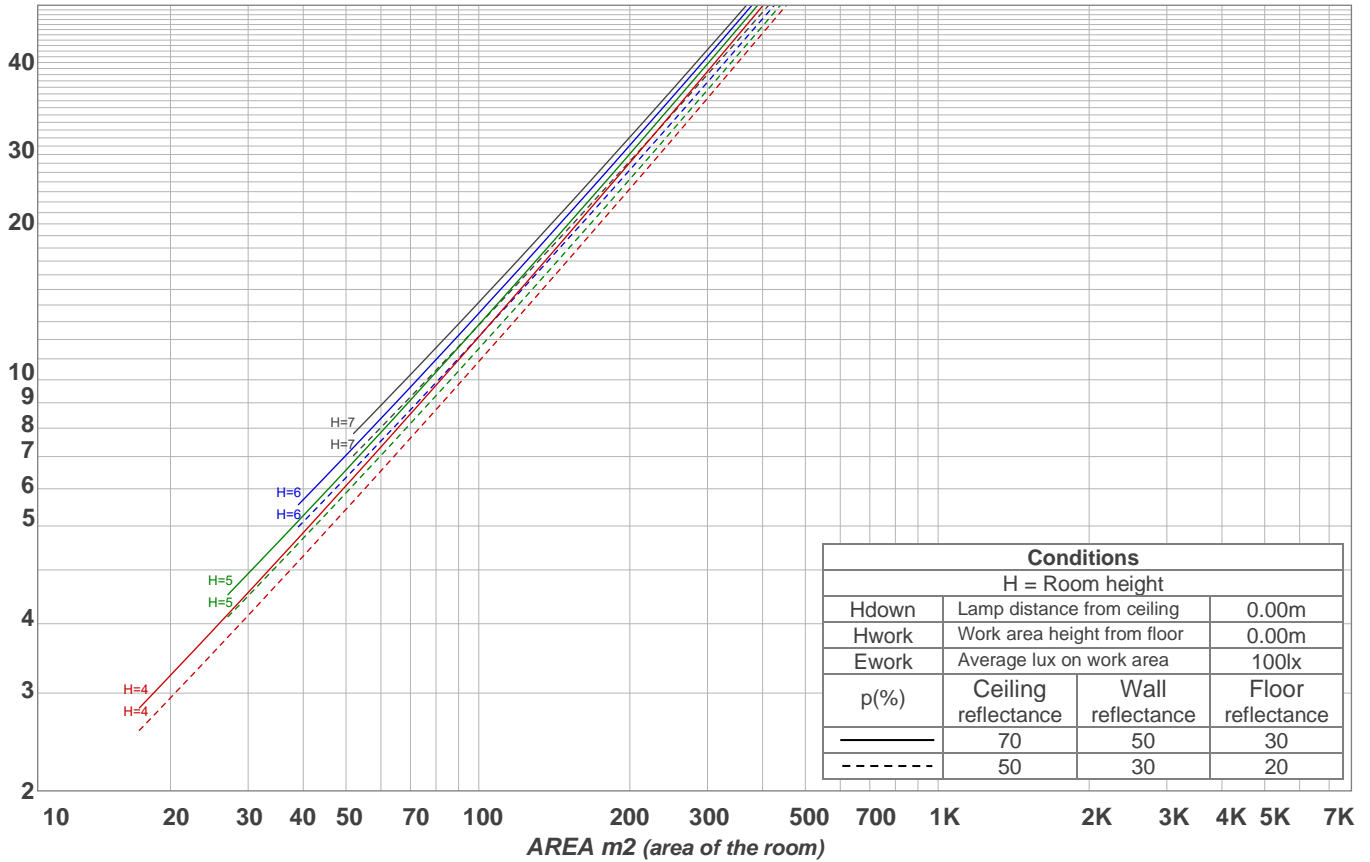
Intensities in 270° c-plane

0°	2°	4°	6°	8°	10°	12°	14°	16°	18°	20°	22°	24°	26°	28°	30°	32°	34°	36°	38°
2066	2054	2019	1960	1878	1772	1641	1489	1318	1137	950	765	587	434	309	211	141	92	61	44
100%	99%	98%	95%	91%	86%	79%	72%	64%	55%	46%	37%	28%	21%	15%	10%	7%	4%	3%	2%

Beam angle 50%	Field angle 10%	Cutoff angle 2,5%	Intensity ratio in 120° cone	Intensity ratio in 90° cone
38.2°	61.2°	74.7°	98.9%	97.6%

LAMPS (number of lamps)
50

Light planning Luminaire budgetary diagram



Luminaire budgetary diagram AREA m2 (area of the room) Coefficients of Utilization

Ceiling reflectance	80				70				50			30			10			0			
Wall reflectance	70	50	30	10	70	50	30	10	50	30	10	50	30	10	50	30	10	50	30	10	0
Floor reflectance	20	20	20	20	20	20	20	20	20	20	20	20	20	20	20	20	20	20	20	20	0
RCR	(RCR: Room Cavity Ratio) Room Values are expressed as percentage of Lumens delivered to the task surface																				
0	119	119	119	119	116	116	116	116	111	111	111	106	106	106	102	102	102	100	100	100	
1	114	112	110	108	112	110	108	106	106	104	103	102	101	100	99	98	97	95	95	95	
2	110	105	102	99	108	104	101	98	101	98	96	98	96	94	95	93	92	90	90	90	
3	105	100	96	92	103	98	95	92	96	93	90	94	91	89	91	89	87	86	86	86	
4	101	95	90	87	100	94	89	86	92	88	85	90	87	84	88	85	83	82	82	82	
5	97	90	86	82	96	90	85	82	88	84	81	86	83	80	85	82	80	78	78	78	
6	94	86	81	78	92	86	81	78	84	80	77	83	79	77	82	79	76	75	75	75	
7	90	83	78	74	89	82	77	74	81	77	74	80	76	73	79	75	73	72	72	72	
8	87	79	74	71	86	79	74	71	78	73	70	77	73	70	76	72	70	69	69	69	
9	84	76	71	68	83	76	71	68	75	70	68	74	70	67	73	70	67	66	66	66	
10	81	73	68	65	80	73	68	65	72	68	65	71	67	65	71	67	65	63	63	63	

Zonal Lumen Summary

0°-10°	10°-20°	20°-30°	30°-40°	40°-50°	50°-60°	60°-70°	70°-80°	80°-90°
183 lm	381 lm	245 lm	59.4 lm	13.3 lm	6.80 lm	4.33 lm	2.81 lm	2.84 lm

90°-100°	100°-110°	110°-120°	120°-130°	130°-140°	140°-150°	150°-160°	160°-170°	170°-180°
0.000 lm	0.000 lm	0.000 lm	0.000 lm	0.000 lm	0.000 lm	0.000 lm	0.000 lm	0.000 lm