

Light efficiency:



Output: 907 lm

Light quality:

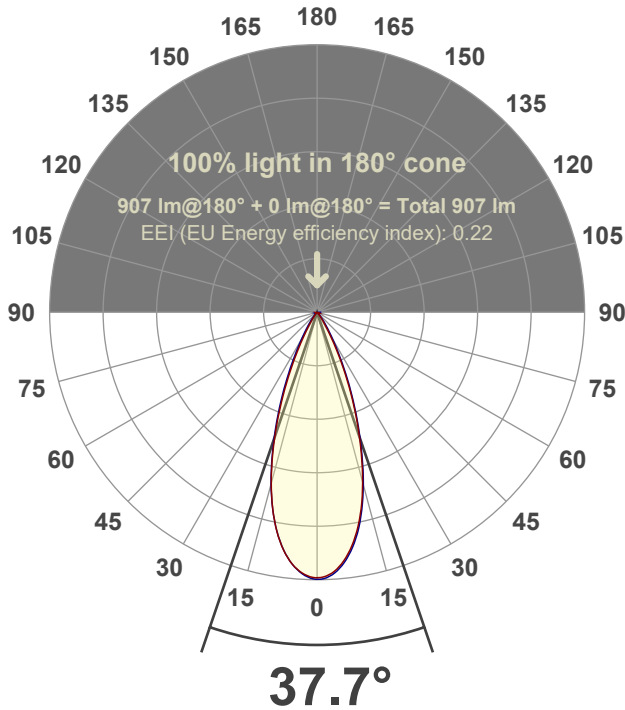


Peak: 2106 cd

Power: 15.0 W



Beam angle



Test number:

GR-F-A14-2722-FL-SQ-91A-Rev2

Luminaire Model:

Graffiti Regress Square Fixed Downlight-A14-2722 38° Optic-Solite

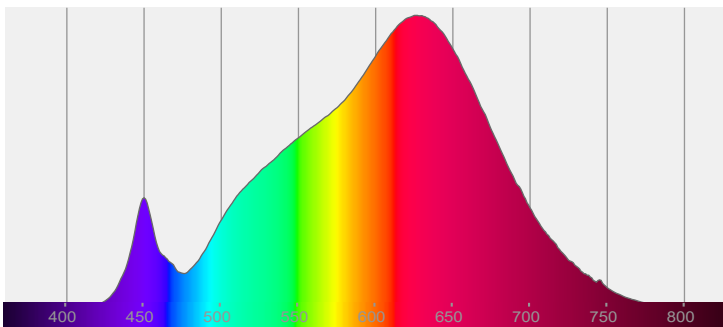
Date and time:

6/30/2022 6:04:33 PM

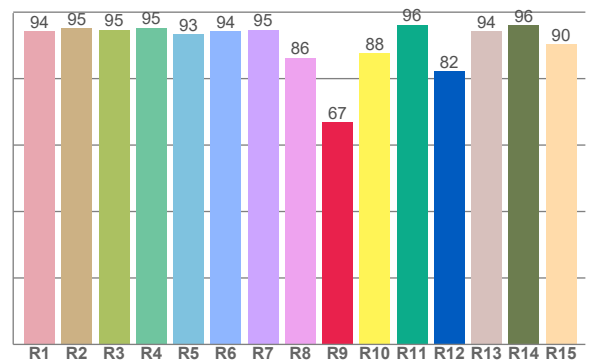
Delivered Lumens

907

Spectra



CRI: 93.5 (R1-R8)



Color parameters

Color rendering index	Red component	Color fidelity	Color gamut	Color quality scale	Color coordinate cie 1931	Color coordinate cie 1931	Color coordinate	Color coordinate	Color divition from black body
CRI	CRI R9	TM30 R <sub>f</sub>	TM30 R <sub>g</sub>	CQS	x	y	u	v	Δuv
93.5	66.9	92.8	100.7	91.5	0.458	0.414	0.260	0.352	0.0014

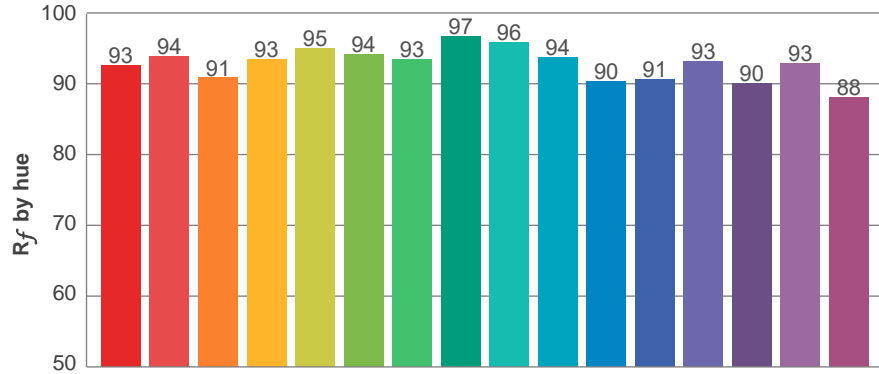
**$R_f$  92.8**  
Fidelity index  $R_f$

---

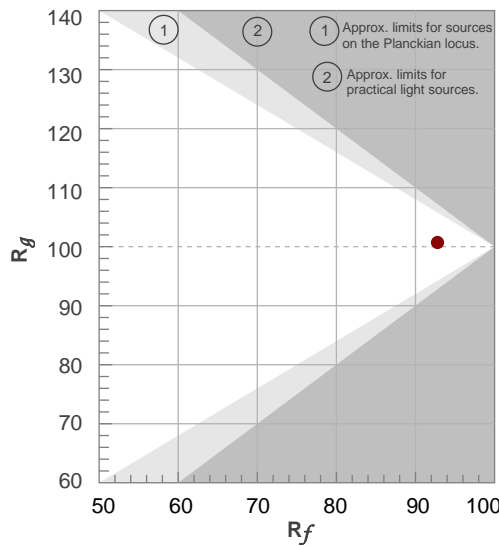
**$R_g$  100.7**  
Gammut index  $R_g$

TM30: 92.8

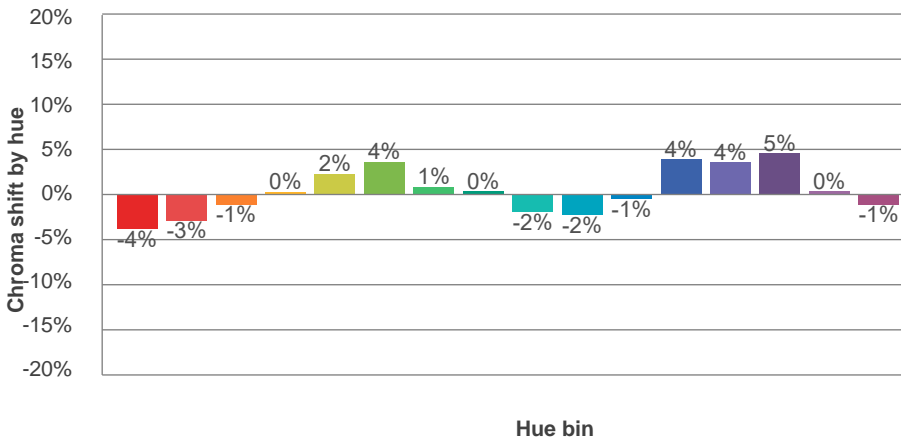
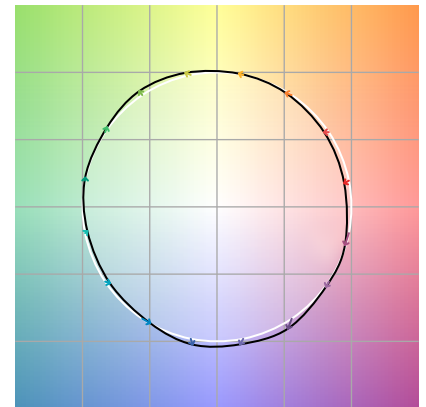
TM-30Color



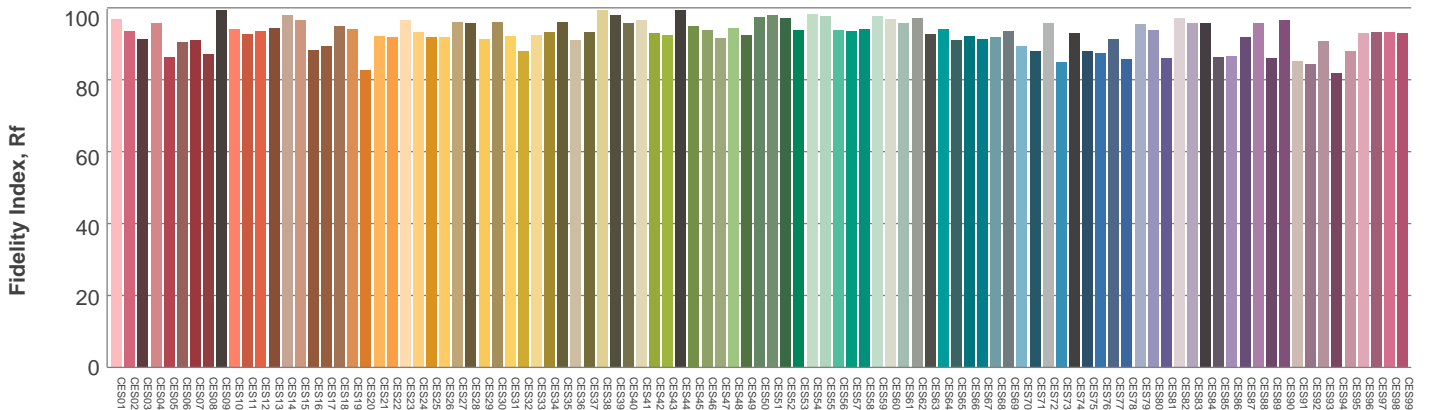
Hue Bin	$R_f$	Graphic shifts (%)	
		Chroma	Hue
1	93	-4%	-1%
2	94	-3%	2%
3	91	-1%	5%
4	93	0%	3%
5	95	2%	4%
6	94	4%	0%
7	93	1%	-4%
8	97	0%	-2%
9	96	-2%	-1%
10	94	-2%	3%
11	90	-1%	7%
12	91	4%	2%
13	93	4%	-3%
14	90	5%	-6%
15	93	0%	-4%
16	88	-1%	-9%



Color vector graphics



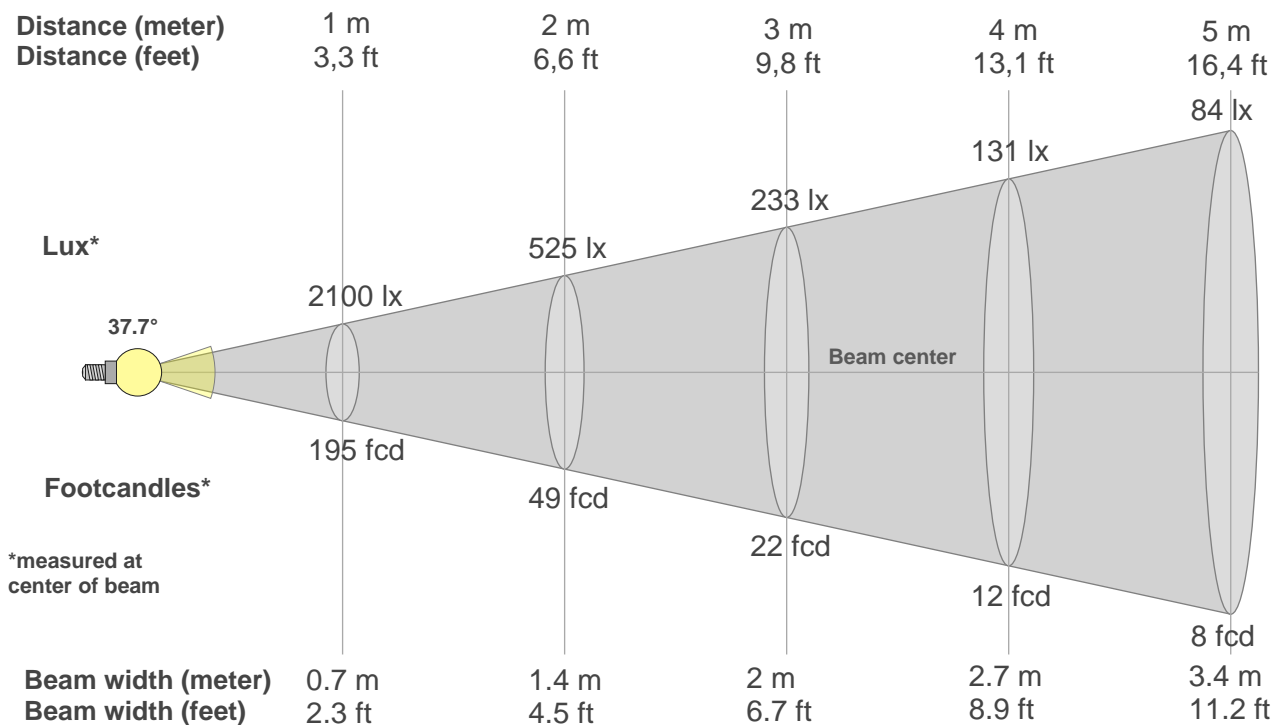
Color distortion



Color Evaluation Sample

[www.graffitilighting.com](http://www.graffitilighting.com) As a result of our continuous improvement, values are subject to change without notice. These are delivered results and can vary +/- 10% from published source data range.

### Beam details



#### Beam intensities from 1-20m

1m	2m	3m	4m	5m	6m	7m	8m	9m	10m	11m	12m	13m	14m	15m	16m	17m	18m	19m	20m
3.3ft	6.6ft	9.8ft	13.1ft	16.4ft	19.7ft	23ft	26.2ft	29.5ft	32.8ft	36.1ft	39.4ft	42.7ft	45.9ft	49.2ft	52.5ft	55.8ft	59.1ft	62.3ft	65.6ft
2100lx	525lx	233lx	131lx	84lx	58lx	43lx	33lx	26lx	21lx	17lx	15lx	12lx	11lx	9lx	8lx	7lx	6lx	6lx	5lx
195.1fcd	48.8fcd	21.7fcd	12.2fcd	7.8fcd	5.4fcd	4fcd	3fcd	2.4fcd	2fcd	1.6fcd	1.4fcd	1.2fcd	1fcd	0.9fcd	0.8fcd	0.7fcd	0.6fcd	0.5fcd	0.5fcd

#### Intensities in 0° c-plane

0°	2°	4°	6°	8°	10°	12°	14°	16°	18°	20°	22°	24°	26°	28°	30°	32°	34°	36°	38°
2100	2082	2045	1980	1888	1774	1637	1479	1302	1117	934	756	590	440	311	209	141	97	67	47
100%	99%	97%	94%	90%	84%	78%	70%	62%	53%	44%	36%	28%	21%	15%	10%	7%	5%	3%	2%

#### Intensities in 90° c-plane

0°	2°	4°	6°	8°	10°	12°	14°	16°	18°	20°	22°	24°	26°	28°	30°	32°	34°	36°	38°
2100	2096	2060	1995	1906	1793	1656	1498	1324	1135	952	780	621	478	356	261	191	141	103	76
100%	100%	98%	95%	91%	85%	79%	71%	63%	54%	45%	37%	30%	23%	17%	12%	9%	7%	5%	4%

#### Intensities in 180° c-plane

0°	2°	4°	6°	8°	10°	12°	14°	16°	18°	20°	22°	24°	26°	28°	30°	32°	34°	36°	38°
2100	2081	2044	1985	1900	1785	1647	1487	1310	1121	927	740	568	416	290	195	129	87	60	42
100%	99%	97%	95%	90%	85%	78%	71%	62%	53%	44%	35%	27%	20%	14%	9%	6%	4%	3%	2%

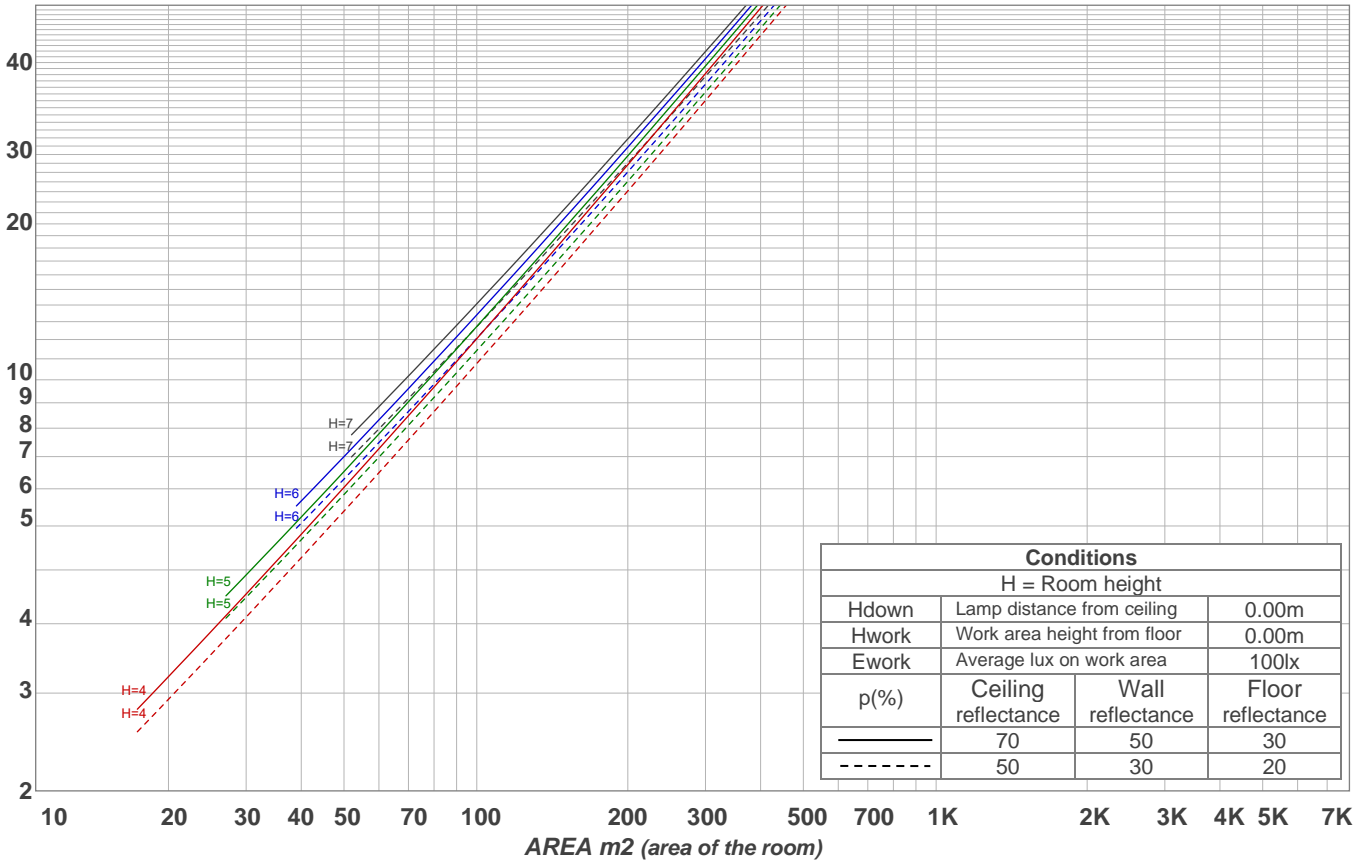
#### Intensities in 270° c-plane

0°	2°	4°	6°	8°	10°	12°	14°	16°	18°	20°	22°	24°	26°	28°	30°	32°	34°	36°	38°
2100	2089	2048	1984	1897	1783	1646	1491	1319	1136	952	778	618	477	358	262	191	140	105	78
100%	100%	98%	94%	90%	85%	78%	71%	63%	54%	45%	37%	29%	23%	17%	12%	9%	7%	5%	4%

Beam angle 50%	Field angle 10%	Cutoff angle 2,5%	Intensity ratio in 120° cone	Intensity ratio in 90° cone
37.7°	61.2°	77.5°	98.9%	97.6%

LAMPS (number of lamps)  
50

### Light planning Luminaire budgetary diagram



### Luminaire budgetary diagram AREA m2 (area of the room) Coefficients of Utilization

Ceiling reflectance	80				70				50			30			10			0			
Wall reflectance	70	50	30	10	70	50	30	10	50	30	10	50	30	10	50	30	10	50	30	10	0
Floor reflectance	20	20	20	20	20	20	20	20	20	20	20	20	20	20	20	20	20	20	20	20	0
RCR	(RCR: Room Cavity Ratio) Room Values are expressed as percentage of Lumens delivered to the task surface																				
0	119	119	119	119	116	116	116	116	111	111	111	106	106	106	102	102	102	100	100	100	100
1	114	112	110	108	112	110	108	106	106	104	103	102	101	100	98	98	97	95	95	95	95
2	110	105	102	99	107	104	101	98	101	98	96	98	96	94	95	93	92	90	90	90	90
3	105	100	96	92	103	98	95	91	96	93	90	94	91	89	91	89	87	86	86	86	86
4	101	95	90	87	99	94	89	86	92	88	85	90	87	84	88	85	83	82	82	82	82
5	97	90	85	82	96	89	85	81	88	84	81	86	83	80	85	82	79	78	78	78	78
6	94	86	81	78	92	85	81	77	84	80	77	83	79	76	81	78	76	75	75	75	75
7	90	82	77	74	89	82	77	74	81	76	73	79	76	73	78	75	73	72	72	72	72
8	87	79	74	71	86	78	74	70	77	73	70	76	73	70	76	72	70	69	69	69	69
9	84	76	71	68	83	75	71	67	74	70	67	74	70	67	73	69	67	66	66	66	66
10	81	73	68	65	80	72	68	65	72	67	65	71	67	64	70	67	64	63	63	63	63

### Zonal Lumen Summary

0°-10°	10°-20°	20°-30°	30°-40°	40°-50°	50°-60°	60°-70°	70°-80°	80°-90°
185 lm	380 lm	241 lm	67.7 lm	17.1 lm	6.11 lm	4.18 lm	2.70 lm	2.66 lm

90°-100°	100°-110°	110°-120°	120°-130°	130°-140°	140°-150°	150°-160°	160°-170°	170°-180°
0.000 lm	0.000 lm	0.000 lm	0.000 lm	0.000 lm	0.000 lm	0.000 lm	0.000 lm	0.000 lm

[www.graffitilighting.com](http://www.graffitilighting.com) As a result of our continuous improvement, values are subject to change without notice. These are delivered results and can vary +/- 10% from published source data range.