

Light efficiency:



Output: 854 lm

Light quality:

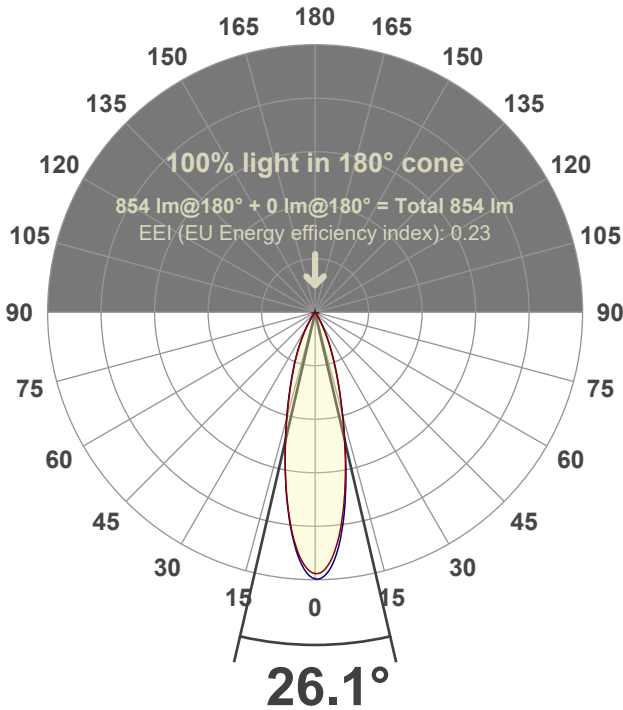


Peak: 3107 cd

Power: 15.0 W



Beam angle



Test number:

GR-F-A14-2722-NF-RD-91A-Rev2

Luminaire Model:

Graffiti Regress Round Fixed Downlight-A14-2722 24° Optic-Solite

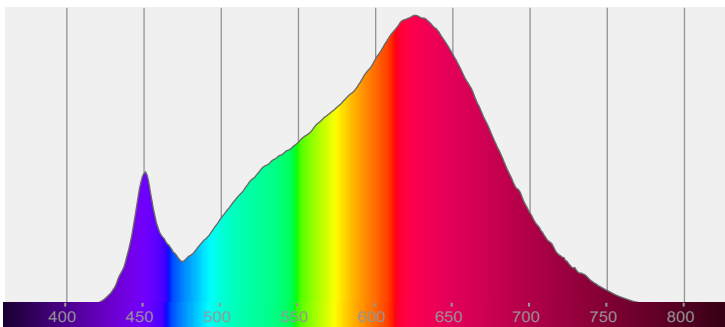
Date and time:

3/24/2022 7:18:23 PM

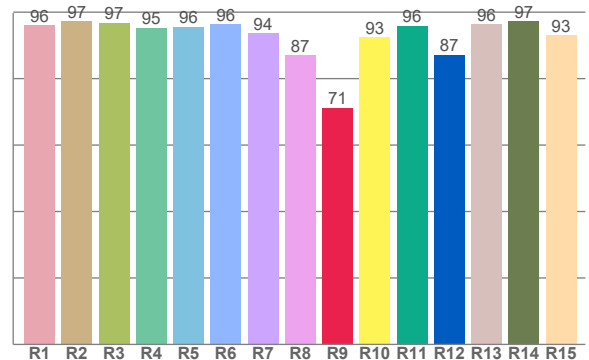
Delivered Lumens

854

Spectra



CRI: 94.8 (R1-R8)



Color parameters

Color rendering index	Red component	Color fidelity	Color gamut	Color quality scale	Color coordinate cie 1931	Color coordinate cie 1931	Color coordinate	Color coordinate	Color divition from black body
CRI	CRI R9	TM30 R _f	TM30 R _g	CQS	x	y	u	v	Δuv
94.8	71.2	92.5	102.1	91.3	0.447	0.402	0.258	0.348	-0.0022

R_f 92.5

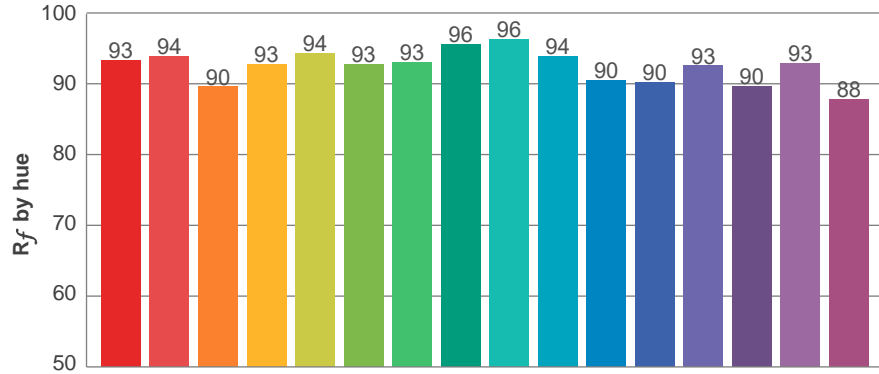
Fidelity index R_f

R_g 102.1

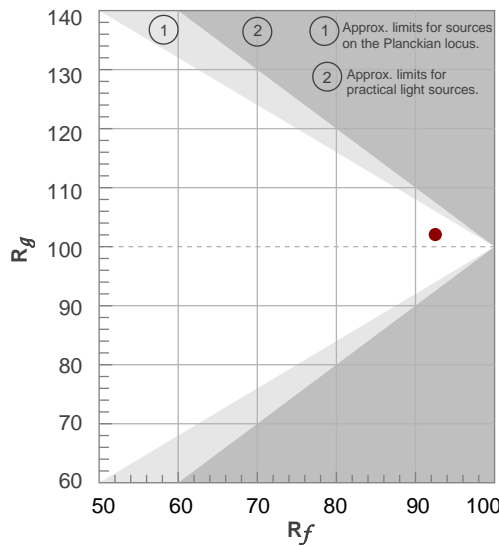
Gammut index R_g

TM30: 92.5

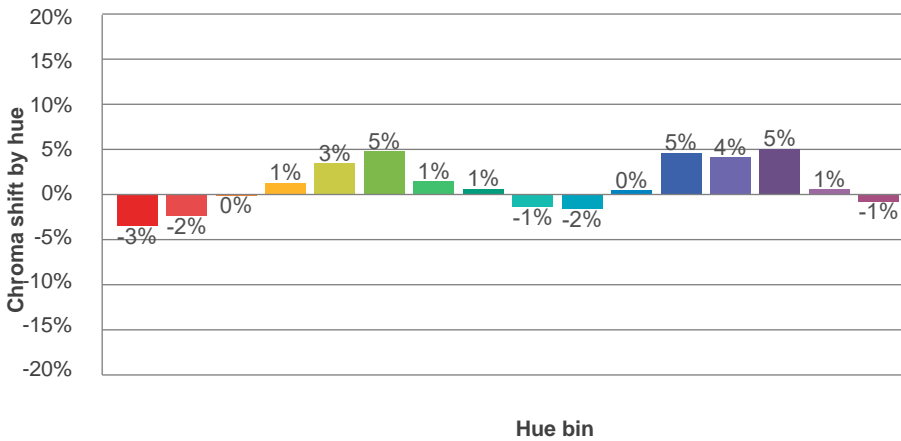
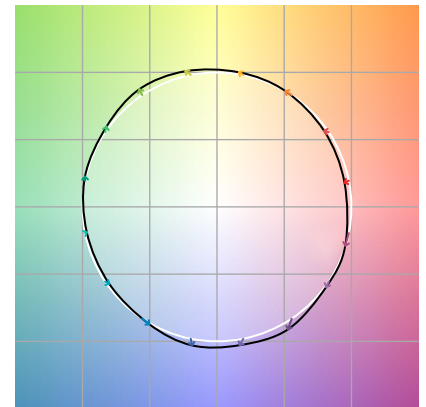
TM-30Color



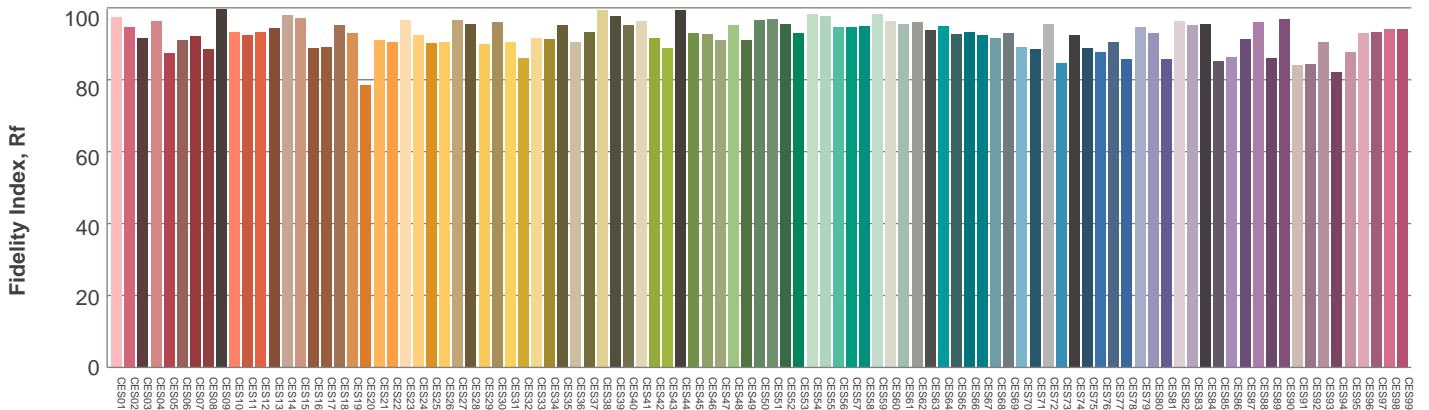
Hue Bin	R _f	Graphic shifts (%)	
		Chroma	Hue
1	93	-3%	-1%
2	94	-2%	3%
3	90	0%	5%
4	93	1%	4%
5	94	3%	3%
6	93	5%	0%
7	93	1%	-4%
8	96	1%	-3%
9	96	-1%	0%
10	94	-2%	3%
11	90	0%	7%
12	90	5%	2%
13	93	4%	-3%
14	90	5%	-7%
15	93	1%	-4%
16	88	-1%	-10%



Color vector graphics

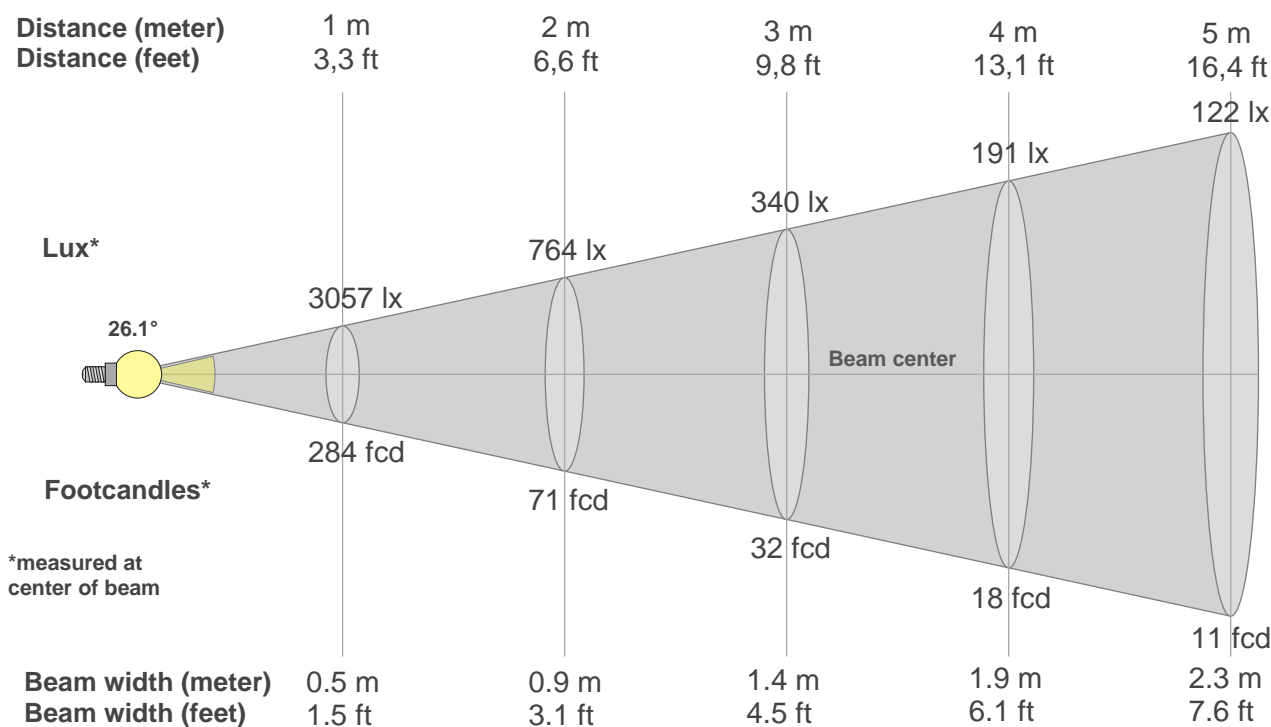


Color distortion



Color Evaluation Sample

Beam details



Beam intensities from 1-20m

1m	2m	3m	4m	5m	6m	7m	8m	9m	10m	11m	12m	13m	14m	15m	16m	17m	18m	19m	20m
3.3ft	6.6ft	9.8ft	13.1ft	16.4ft	19.7ft	23ft	26.2ft	29.5ft	32.8ft	36.1ft	39.4ft	42.7ft	45.9ft	49.2ft	52.5ft	55.8ft	59.1ft	62.3ft	65.6ft
3057lx	764lx	340lx	191lx	122lx	85lx	62lx	48lx	38lx	31lx	25lx	21lx	18lx	16lx	14lx	12lx	11lx	9lx	8lx	8lx
284fcd	71fcd	31.6fcd	17.8fcd	11.4fcd	7.9fcd	5.8fcd	4.4fcd	3.5fcd	2.8fcd	2.3fcd	2fcd	1.7fcd	1.4fcd	1.3fcd	1.1fcd	1fcd	0.9fcd	0.8fcd	0.7fcd

Intensities in 0° c-plane

0°	2°	4°	6°	8°	10°	12°	14°	16°	18°	20°	22°	24°	26°	28°	30°	32°	34°	36°	38°
3057	2993	2861	2633	2341	2022	1698	1388	1114	898	715	562	431	320	230	160	110	75	51	36
100%	98%	94%	86%	77%	66%	56%	45%	36%	29%	23%	18%	14%	10%	8%	5%	4%	2%	2%	1%

Intensities in 90° c-plane

0°	2°	4°	6°	8°	10°	12°	14°	16°	18°	20°	22°	24°	26°	28°	30°	32°	34°	36°	38°
3057	3057	2927	2707	2407	2064	1720	1397	1111	876	691	537	408	299	210	143	98	67	46	32
100%	100%	96%	89%	79%	68%	56%	46%	36%	29%	23%	18%	13%	10%	7%	5%	3%	2%	1%	1%

Intensities in 180° c-plane

0°	2°	4°	6°	8°	10°	12°	14°	16°	18°	20°	22°	24°	26°	28°	30°	32°	34°	36°	38°
3057	2960	2805	2575	2282	1980	1683	1404	1157	945	776	632	505	391	290	208	144	96	64	43
100%	97%	92%	84%	75%	65%	55%	46%	38%	31%	25%	21%	17%	13%	9%	7%	5%	3%	2%	1%

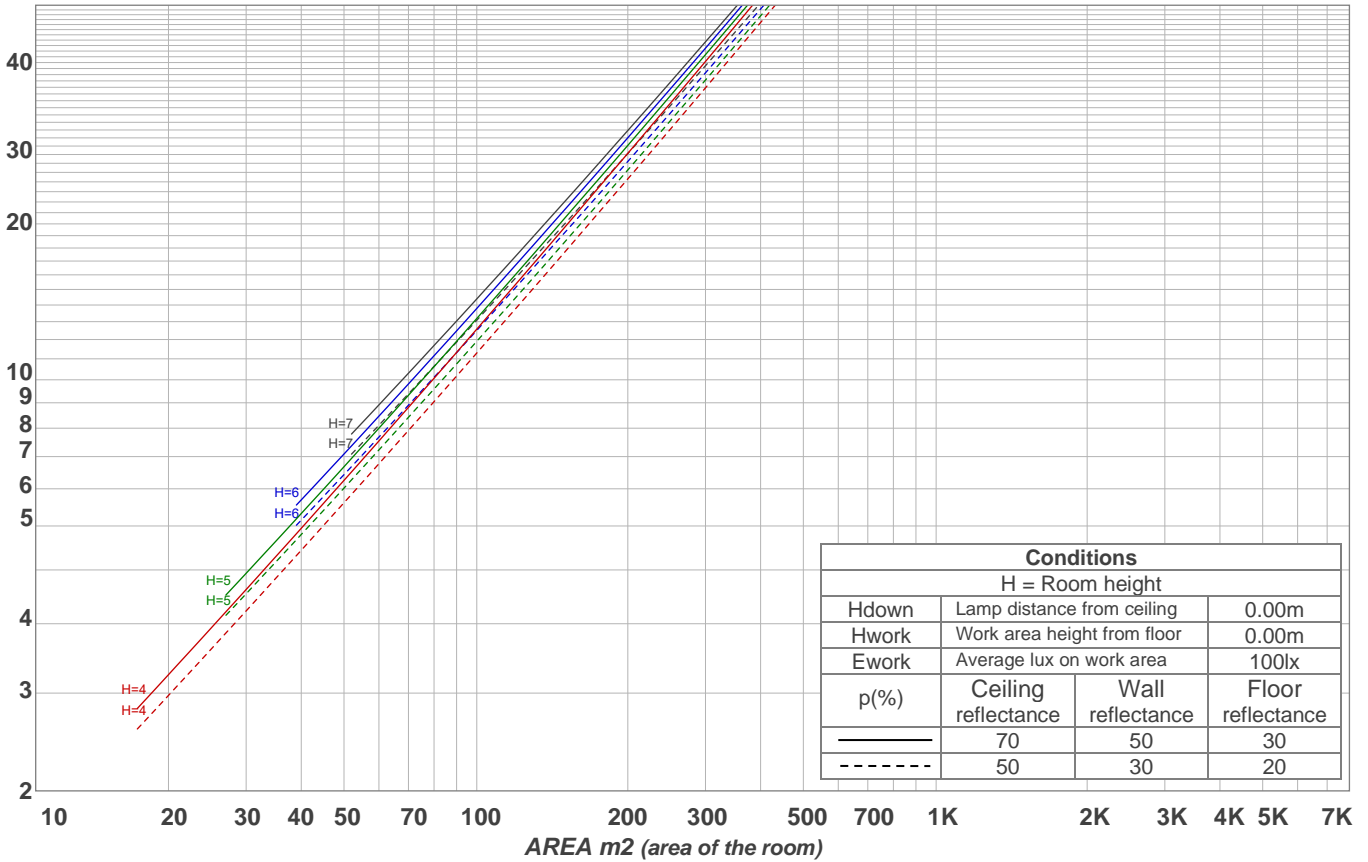
Intensities in 270° c-plane

0°	2°	4°	6°	8°	10°	12°	14°	16°	18°	20°	22°	24°	26°	28°	30°	32°	34°	36°	38°
3057	3018	2848	2589	2295	1988	1689	1415	1172	967	796	650	522	407	308	225	157	106	72	48
100%	99%	93%	85%	75%	65%	55%	46%	38%	32%	26%	21%	17%	13%	10%	7%	5%	3%	2%	2%

Beam angle 50%	Field angle 10%	Cutoff angle 2,5%	Intensity ratio in 120° cone	Intensity ratio in 90° cone
26.1°	53.9°	68.9°	98.8%	97.6%

LAMPS (number of lamps)
50

Light planning Luminaire budgetary diagram



Luminaire budgetary diagram AREA m2 (area of the room) Coefficients of Utilization

Ceiling reflectance	80				70				50			30			10			0
Wall reflectance	70	50	30	10	70	50	30	10	50	30	10	50	30	10	50	30	10	0
Floor reflectance	20	20	20	20	20	20	20	20	20	20	20	20	20	20	20	20	20	0
RCR	(RCR: Room Cavity Ratio) Room Values are expressed as percentage of Lumens delivered to the task surface																	
0	119	119	119	119	116	116	116	116	111	111	111	106	106	106	102	102	102	100
1	114	112	110	108	112	110	108	106	106	104	103	102	101	100	99	98	97	95
2	110	106	103	100	108	104	101	99	101	99	97	98	96	95	96	94	93	91
3	106	101	97	94	104	100	96	93	97	94	92	95	92	90	93	91	89	87
4	102	96	92	89	101	95	91	88	93	90	87	91	88	86	90	87	85	84
5	99	92	88	84	97	91	87	84	90	86	83	88	85	82	87	84	82	81
6	95	88	84	80	94	88	83	80	86	83	80	85	82	79	84	81	79	78
7	92	85	80	77	91	84	80	77	83	79	77	82	79	76	81	78	76	75
8	89	82	77	74	88	81	77	74	81	77	74	80	76	73	79	76	73	72
9	87	79	75	72	86	79	74	71	78	74	71	77	74	71	76	73	71	70
10	84	76	72	69	83	76	72	69	75	71	69	75	71	69	74	71	68	67

Zonal Lumen Summary

0°-10°	10°-20°	20°-30°	30°-40°	40°-50°	50°-60°	60°-70°	70°-80°	80°-90°
239 lm	349 lm	188 lm	49.4 lm	11.6 lm	5.95 lm	4.16 lm	3.03 lm	2.95 lm

90°-100°	100°-110°	110°-120°	120°-130°	130°-140°	140°-150°	150°-160°	160°-170°	170°-180°
0.000 lm	0.000 lm	0.000 lm	0.000 lm	0.000 lm	0.000 lm	0.000 lm	0.000 lm	0.000 lm