

Light efficiency:



Output: 901 lm

Light quality:

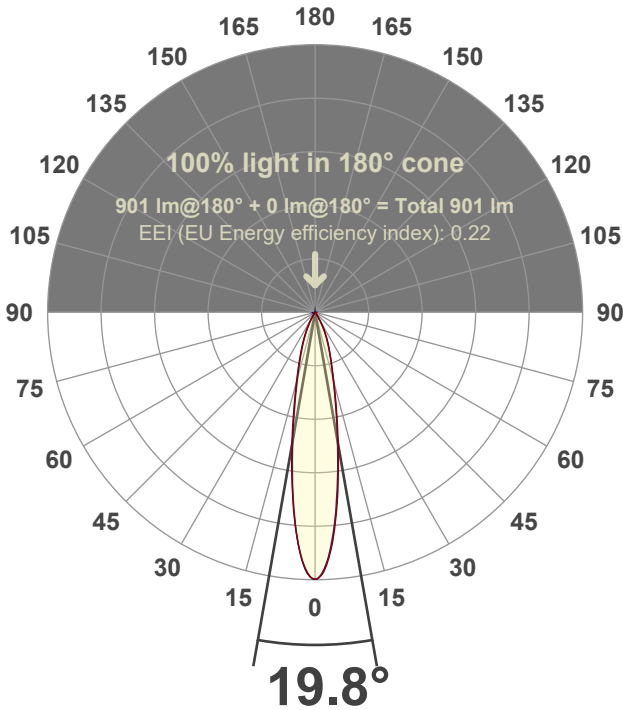


Peak: 4520 cd

Power: 15.0 W



Beam angle



Test number:

GR-F-A14-2722-SP-RD-91A-Rev2

Luminaire Model:

Graffiti Regress Round Fixed Downlight-A14-2722 15° Optic-Solite

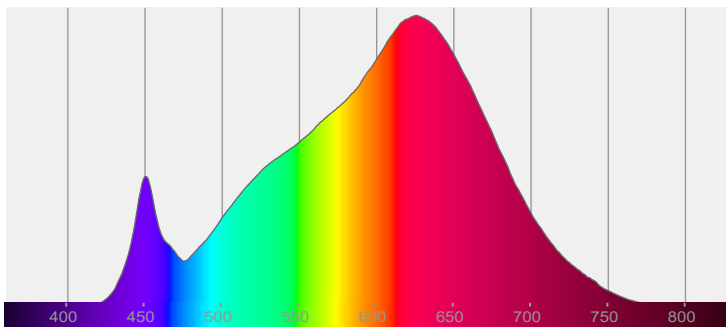
Date and time:

3/24/2022 7:37:34 PM

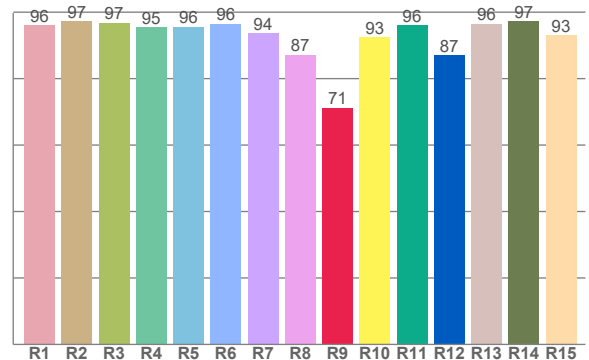
Delivered Lumens

901

Spectra



CRI: 94.8 (R1-R8)



Color parameters

Color rendering index	Red component	Color fidelity	Color gamut	Color quality scale	Color coordinate cie 1931	Color coordinate cie 1931	Color coordinate	Color coordinate	Color diviation from black body
CRI	CRI R9	TM30 R _f	TM30 R _g	CQS	x	y	u	v	Δuv
94.8	71.2	92.6	102.0	91.4	0.447	0.402	0.258	0.348	-0.0020

R_f 92.6

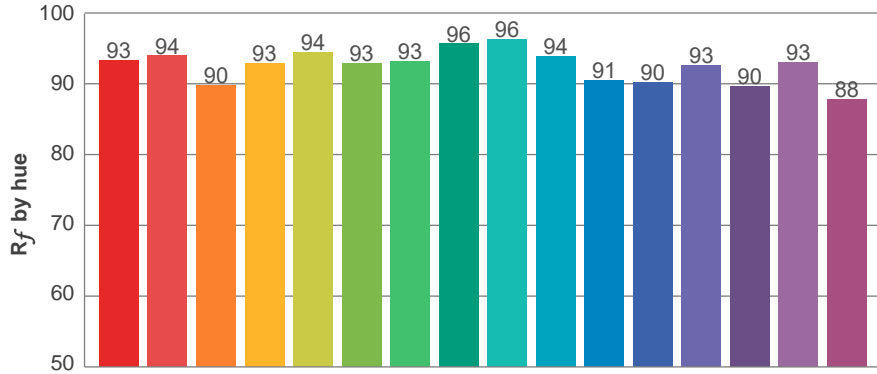
Fidelity index R_f

R_g 102.0

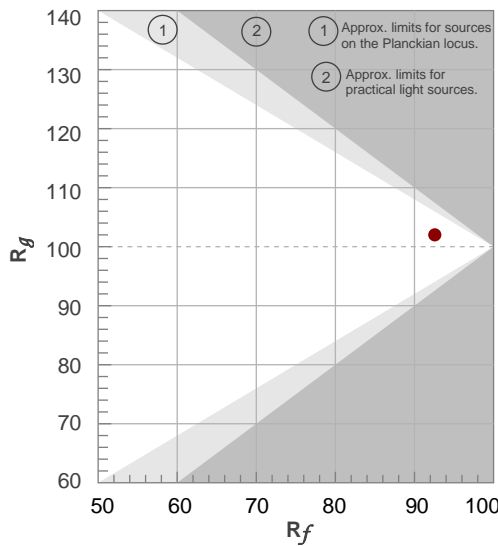
Gammut index R_g

TM30: 92.6

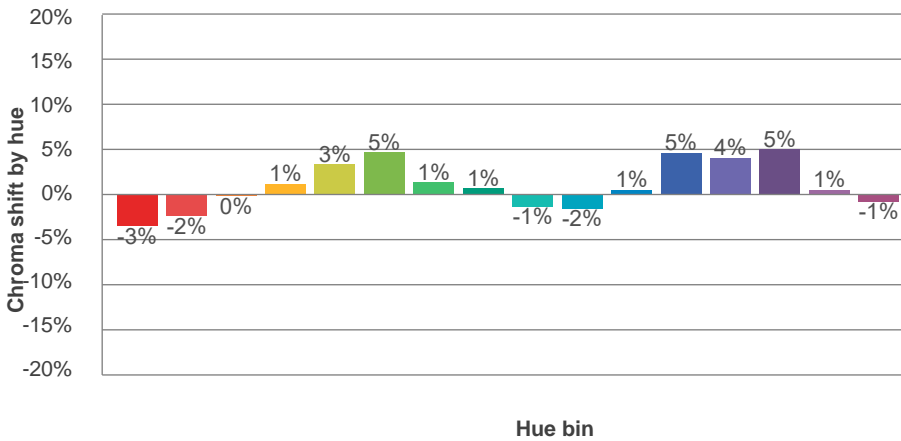
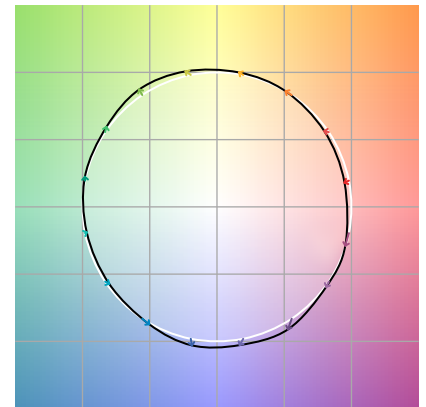
TM-30Color



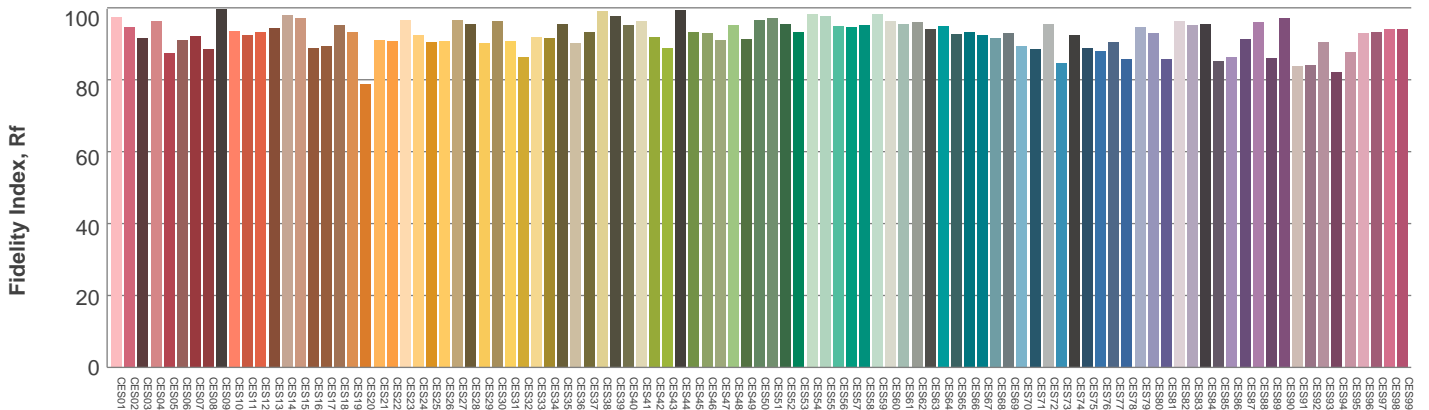
Hue Bin	R_f	Graphic shifts (%)	
		Chroma	Hue
1	93	-3%	-1%
2	94	-2%	2%
3	90	0%	5%
4	93	1%	3%
5	94	3%	3%
6	93	5%	0%
7	93	1%	-4%
8	96	1%	-3%
9	96	-1%	0%
10	94	-2%	3%
11	91	1%	7%
12	90	5%	2%
13	93	4%	-3%
14	90	5%	-7%
15	93	1%	-4%
16	88	-1%	-10%



Color vector graphics

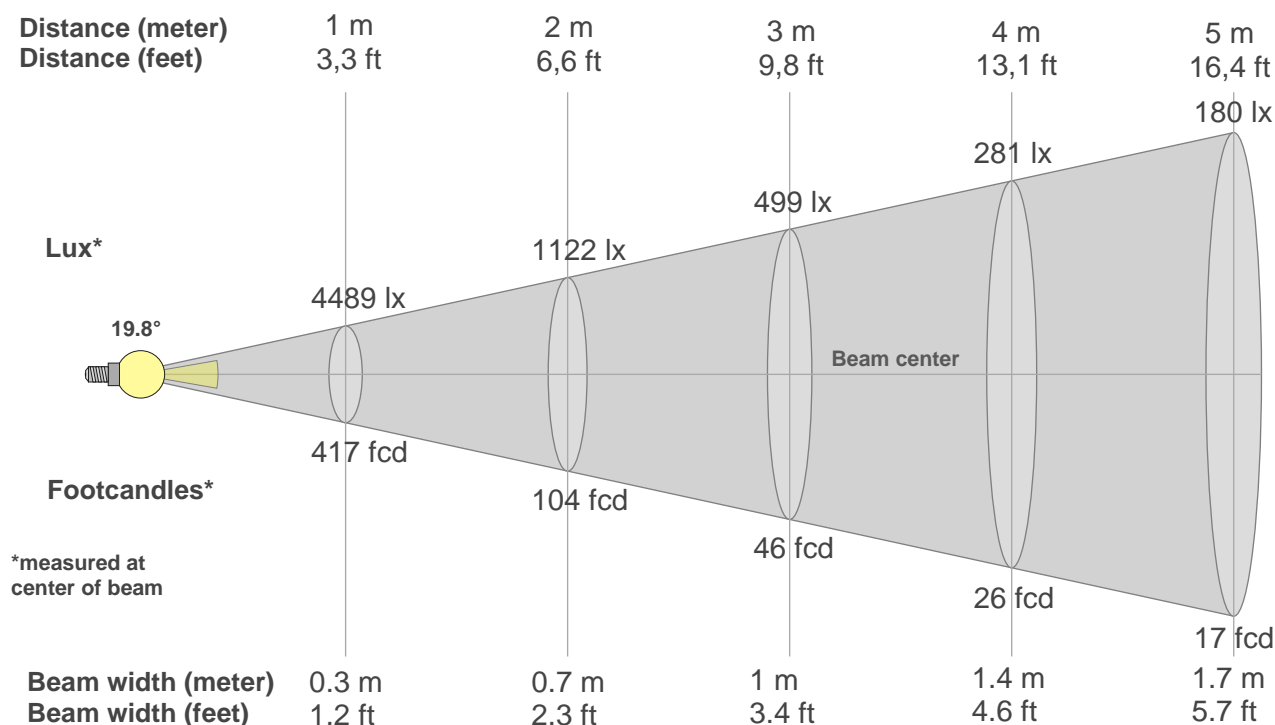


Color distortion



Color Evaluation Sample

Beam details



Beam intensities from 1-20m

1m	2m	3m	4m	5m	6m	7m	8m	9m	10m	11m	12m	13m	14m	15m	16m	17m	18m	19m	20m
3.3ft	6.6ft	9.8ft	13.1ft	16.4ft	19.7ft	23ft	26.2ft	29.5ft	32.8ft	36.1ft	39.4ft	42.7ft	45.9ft	49.2ft	52.5ft	55.8ft	59.1ft	62.3ft	65.6ft
4489lx	1122lx	499lx	281lx	180lx	125lx	92lx	70lx	55lx	45lx	37lx	31lx	27lx	23lx	20lx	18lx	16lx	14lx	12lx	11lx
417.1fcd	104.3fcd	46.3fcd	26.1fcd	16.7fcd	11.6fcd	8.5fcd	6.5fcd	5.1fcd	4.2fcd	3.4fcd	2.9fcd	2.5fcd	2.1fcd	1.9fcd	1.6fcd	1.4fcd	1.3fcd	1.2fcd	1fcd

Intensities in 0° c-plane

0°	2°	4°	6°	8°	10°	12°	14°	16°	18°	20°	22°	24°	26°	28°	30°	32°	34°	36°	38°
4489	4371	3983	3428	2833	2270	1783	1385	1105	892	727	594	480	376	281	202	139	92	62	43
100%	97%	89%	76%	63%	51%	40%	31%	25%	20%	16%	13%	11%	8%	6%	4%	3%	2%	1%	1%

Intensities in 90° c-plane

0°	2°	4°	6°	8°	10°	12°	14°	16°	18°	20°	22°	24°	26°	28°	30°	32°	34°	36°	38°
4489	4317	3918	3372	2761	2194	1731	1367	1090	883	731	607	496	391	295	209	143	96	63	41
100%	96%	87%	75%	61%	49%	39%	30%	24%	20%	16%	14%	11%	9%	7%	5%	3%	2%	1%	1%

Intensities in 180° c-plane

0°	2°	4°	6°	8°	10°	12°	14°	16°	18°	20°	22°	24°	26°	28°	30°	32°	34°	36°	38°
4489	4332	3960	3431	2832	2271	1786	1394	1094	867	698	559	438	330	237	162	110	75	51	35
100%	96%	88%	76%	63%	51%	40%	31%	24%	19%	16%	12%	10%	7%	5%	4%	2%	2%	1%	1%

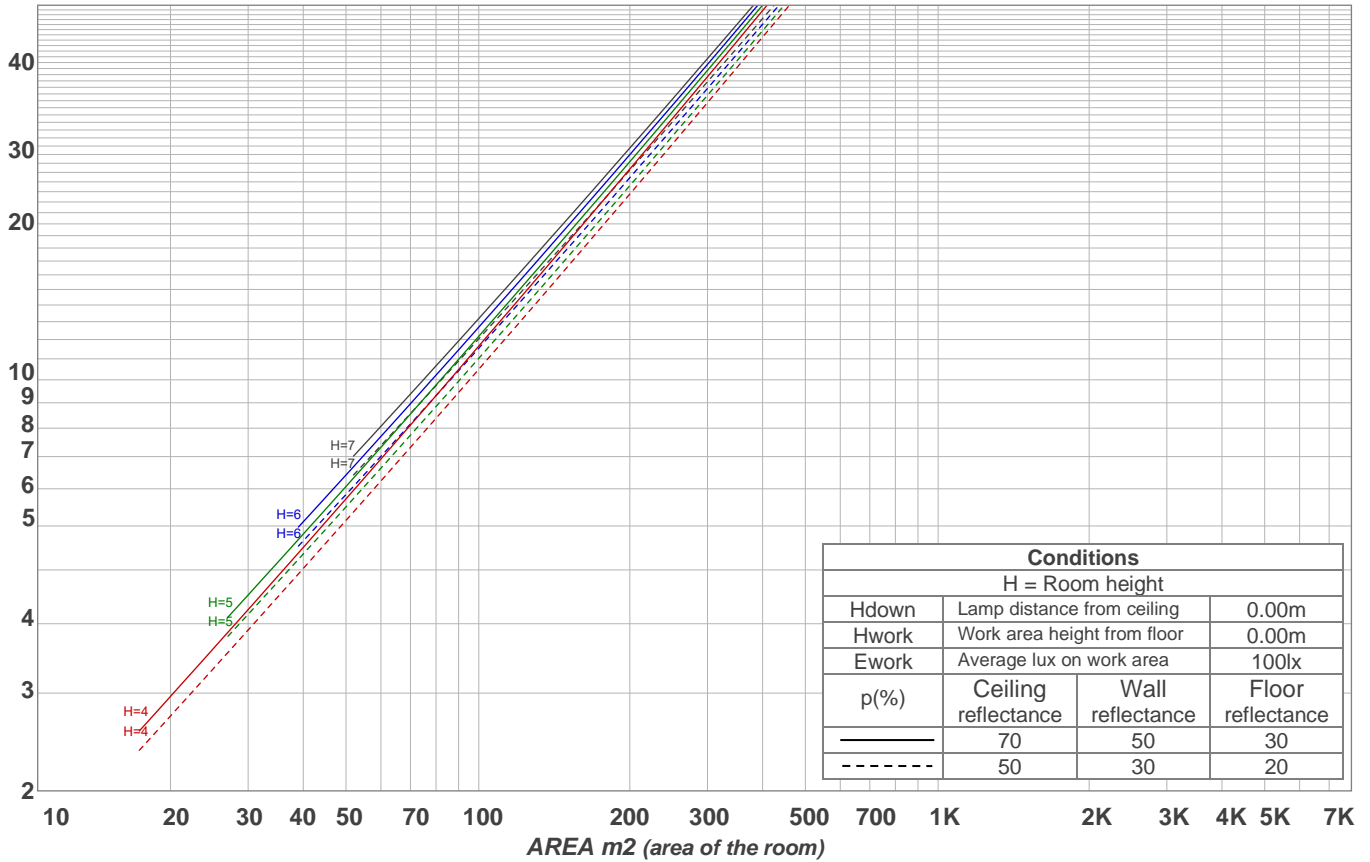
Intensities in 270° c-plane

0°	2°	4°	6°	8°	10°	12°	14°	16°	18°	20°	22°	24°	26°	28°	30°	32°	34°	36°	38°
4489	4387	3963	3400	2787	2200	1699	1319	1037	824	659	522	403	299	212	143	93	60	41	29
100%	98%	88%	76%	62%	49%	38%	29%	23%	18%	15%	12%	9%	7%	5%	3%	2%	1%	1%	1%

Beam angle 50%	Field angle 10%	Cutoff angle 2,5%	Intensity ratio in 120° cone	Intensity ratio in 90° cone
19.8°	48.2°	64.6°	99.1%	98.1%

LAMPS (number of lamps)
50

Light planning Luminaire budgetary diagram



Luminaire budgetary diagram AREA m2 (area of the room) Coefficients of Utilization

Ceiling reflectance	80				70				50			30			10			0
Wall reflectance	70	50	30	10	70	50	30	10	50	30	10	50	30	10	50	30	10	0
Floor reflectance	20	20	20	20	20	20	20	20	20	20	20	20	20	20	20	20	20	0
RCR	(RCR: Room Cavity Ratio) Room Values are expressed as percentage of Lumens delivered to the task surface																	
0	119	119	119	119	116	116	116	116	111	111	111	106	106	106	102	102	102	100
1	115	112	110	109	112	110	108	107	106	105	104	103	101	100	99	98	98	96
2	111	107	104	101	109	105	102	100	102	100	98	99	97	96	96	95	94	92
3	107	102	98	95	105	100	97	94	98	95	93	96	93	91	94	92	90	89
4	103	97	93	90	102	96	93	90	94	91	89	93	90	88	91	89	87	85
5	100	94	89	86	98	93	89	86	91	88	85	90	87	84	88	86	84	82
6	97	90	86	82	95	89	85	82	88	84	82	87	84	81	86	83	81	80
7	94	87	83	79	93	86	82	79	85	82	79	84	81	78	83	80	78	77
8	91	84	80	77	90	84	79	76	83	79	76	82	78	76	81	78	76	75
9	88	81	77	74	88	81	77	74	80	76	74	79	76	74	79	76	73	72
10	86	79	75	72	85	79	74	72	78	74	72	77	74	71	77	73	71	70

Zonal Lumen Summary

0°-10°	10°-20°	20°-30°	30°-40°	40°-50°	50°-60°	60°-70°	70°-80°	80°-90°
303 lm	345 lm	183 lm	46.7 lm	10.3 lm	5.59 lm	3.44 lm	2.21 lm	2.44 lm

90°-100°	100°-110°	110°-120°	120°-130°	130°-140°	140°-150°	150°-160°	160°-170°	170°-180°
0.000 lm	0.000 lm	0.000 lm	0.000 lm	0.000 lm	0.000 lm	0.000 lm	0.000 lm	0.000 lm