

Light efficiency:



Output: 940 lm

Light quality:

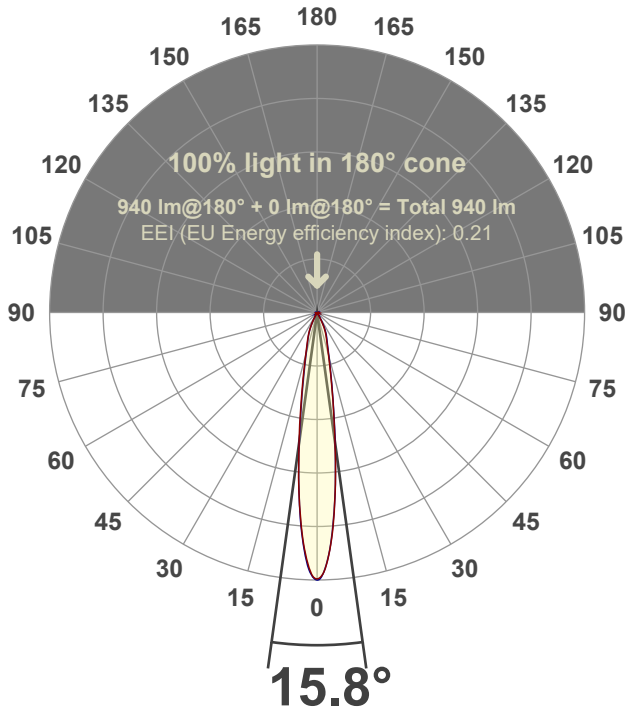


Peak: 6862 cd

Power: 15.0 W



Beam angle



Test number:

GR-F-A14-2722-SP-RD-Rev2

Luminaire Model:

Graffiti Regress Round Fixed Downlight-A14-2722 15° Optic

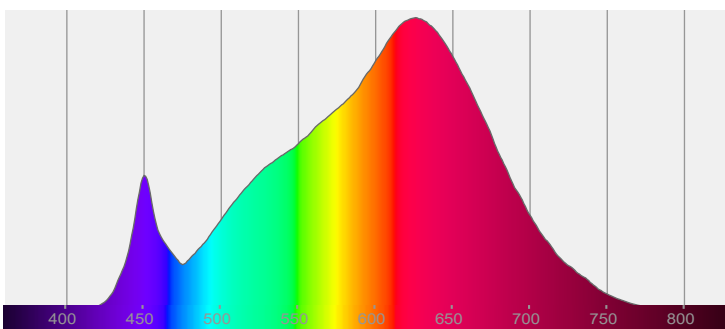
Date and time:

3/24/2022 7:29:51 PM

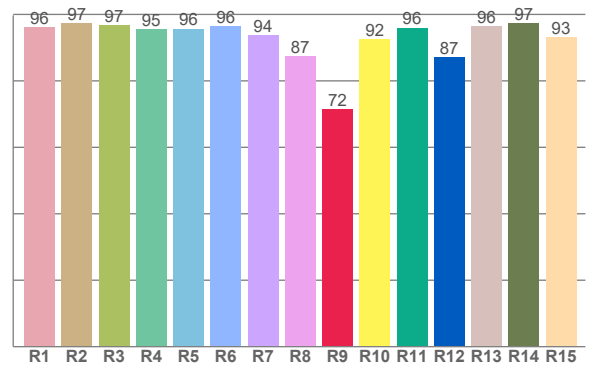
Delivered Lumens

940

Spectra



CRI: 94.8 (R1-R8)



Color parameters

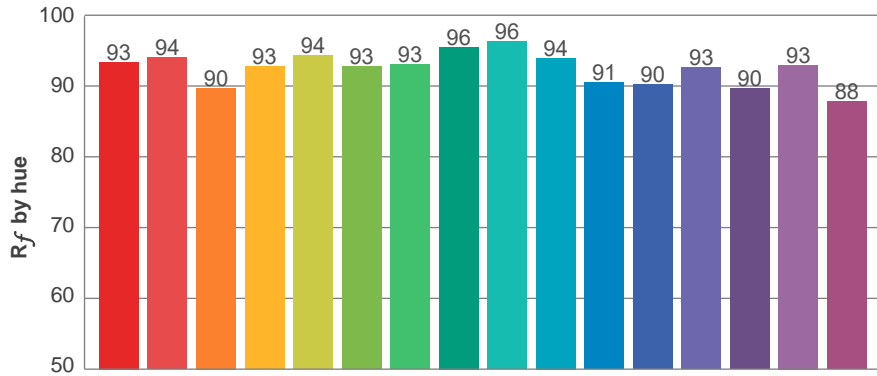
	Color rendering index	Red component	Color fidelity	Color gamut	Color quality scale	Color coordinate cie 1931	Color coordinate cie 1931	Color coordinate	Color coordinate	Color deviation from black body
	CRI	CRI R9	TM30 R _f	TM30 R _g	CQS	x	y	u	v	Δuv
	94.8	71.5	92.6	102.1	91.4	0.447	0.402	0.258	0.348	-0.0020

R_f 92.6
Fidelity index R_f

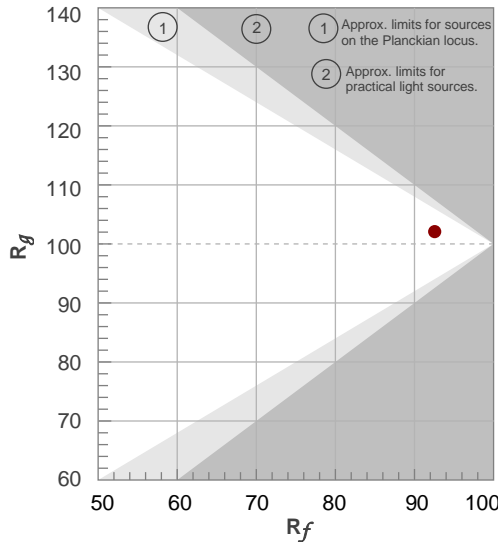
R_g 102.1
Gammut index R_g

TM30: 92.6

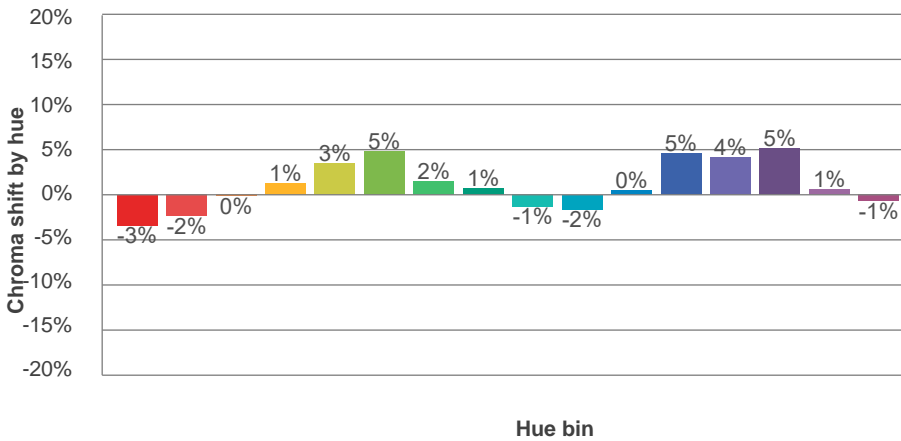
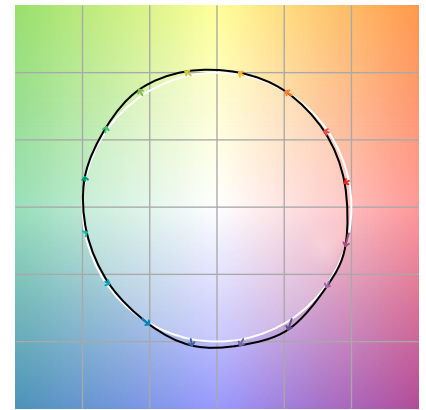
TM-30Color



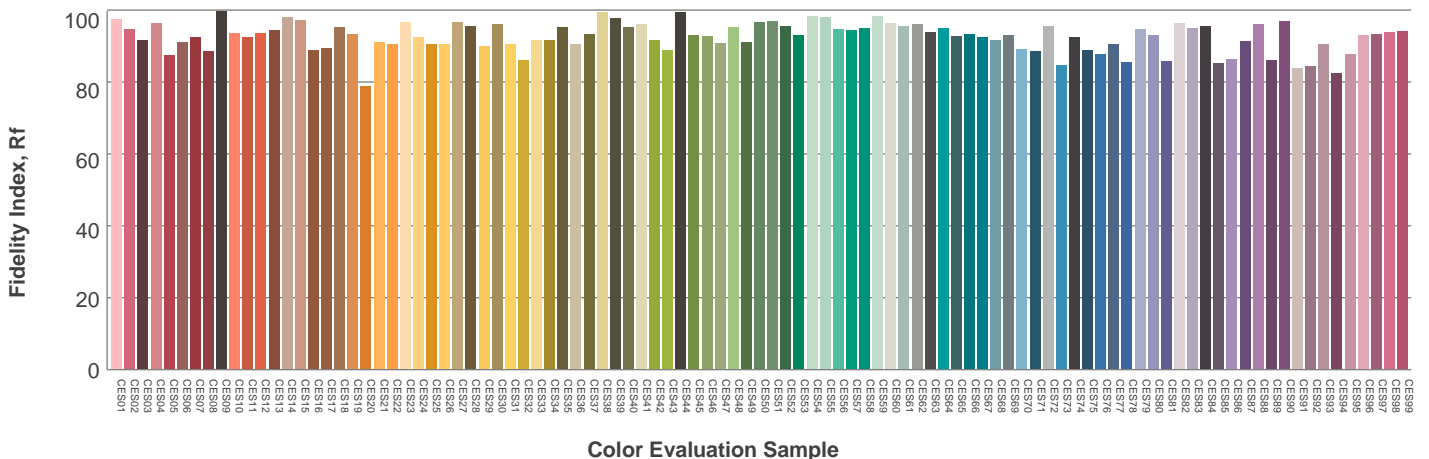
Hue Bin	R_f	Graphic shifts (%)	
		Chroma	Hue
1	93	-3%	-1%
2	94	-2%	2%
3	90	0%	5%
4	93	1%	3%
5	94	3%	3%
6	93	5%	0%
7	93	2%	-4%
8	96	1%	-3%
9	96	-1%	0%
10	94	-2%	3%
11	91	0%	7%
12	90	5%	2%
13	93	4%	-3%
14	90	5%	-7%
15	93	1%	-4%
16	88	-1%	-10%



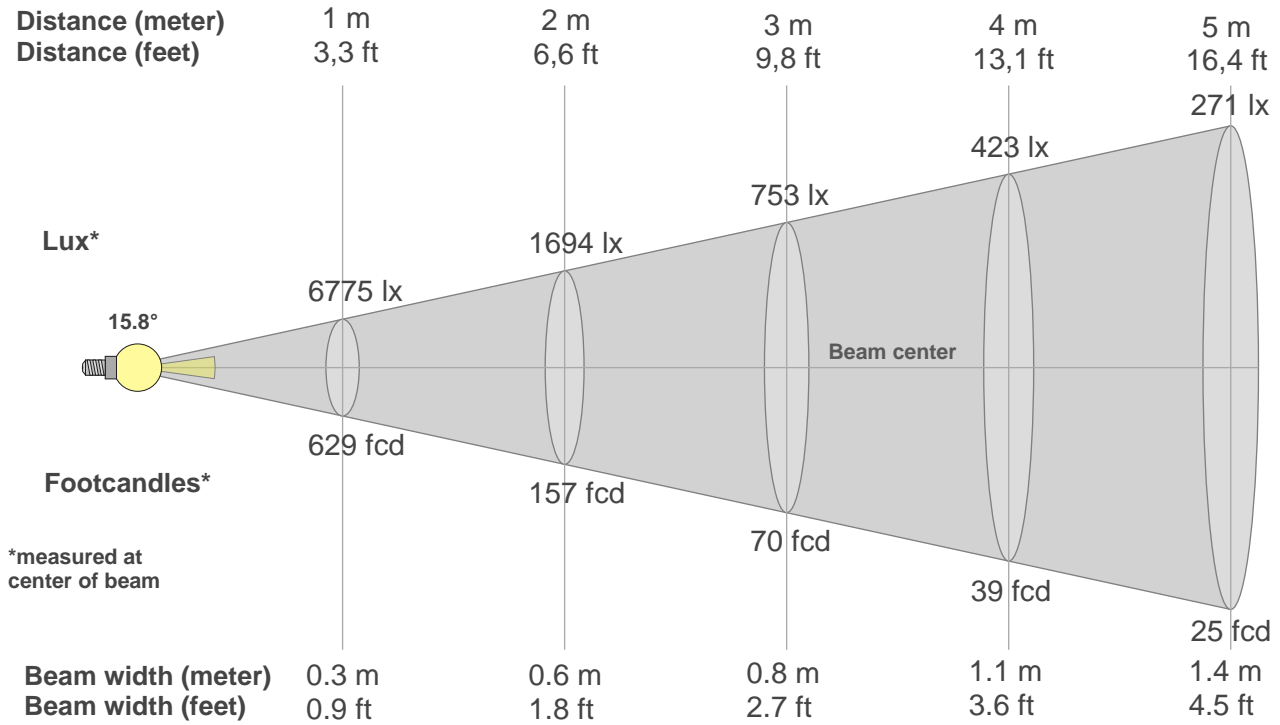
Color vector graphics



Color distortion



Beam details



Beam intensities from 1-20m

1m	2m	3m	4m	5m	6m	7m	8m	9m	10m	11m	12m	13m	14m	15m	16m	17m	18m	19m	20m
3.3ft	6.6ft	9.8ft	13.1ft	16.4ft	19.7ft	23ft	26.2ft	29.5ft	32.8ft	36.1ft	39.4ft	42.7ft	45.9ft	49.2ft	52.5ft	55.8ft	59.1ft	62.3ft	65.6ft
6775lx	1694lx	753lx	423lx	271lx	188lx	138lx	106lx	84lx	68lx	56lx	47lx	40lx	35lx	30lx	26lx	23lx	21lx	19lx	17lx
629.4fcd	157.4fcd	69.9fcd	39.3fcd	25.2fcd	17.5fcd	12.8fcd	9.8fcd	7.8fcd	6.3fcd	5.2fcd	4.4fcd	3.7fcd	3.2fcd	2.8fcd	2.5fcd	2.2fcd	1.9fcd	1.7fcd	1.6fcd

Intensities in 0° c-plane

0°	2°	4°	6°	8°	10°	12°	14°	16°	18°	20°	22°	24°	26°	28°	30°	32°	34°	36°	38°
6775	6487	5675	4503	3359	2431	1766	1313	1028	843	708	598	491	370	236	116	39	10	7	7
100%	96%	84%	66%	50%	36%	26%	19%	15%	12%	10%	9%	7%	5%	3%	2%	1%	0%	0%	0%

Intensities in 90° c-plane

0°	2°	4°	6°	8°	10°	12°	14°	16°	18°	20°	22°	24°	26°	28°	30°	32°	34°	36°	38°
6775	6432	5596	4494	3335	2444	1812	1374	1076	874	745	646	540	423	293	156	53	16	7	6
100%	95%	83%	66%	49%	36%	27%	20%	16%	13%	11%	10%	8%	6%	4%	2%	1%	0%	0%	0%

Intensities in 180° c-plane

0°	2°	4°	6°	8°	10°	12°	14°	16°	18°	20°	22°	24°	26°	28°	30°	32°	34°	36°	38°
6775	6423	5615	4522	3358	2448	1785	1331	1029	834	700	578	454	323	188	78	27	9	7	8
100%	95%	83%	67%	50%	36%	26%	20%	15%	12%	10%	9%	7%	5%	3%	1%	0%	0%	0%	0%

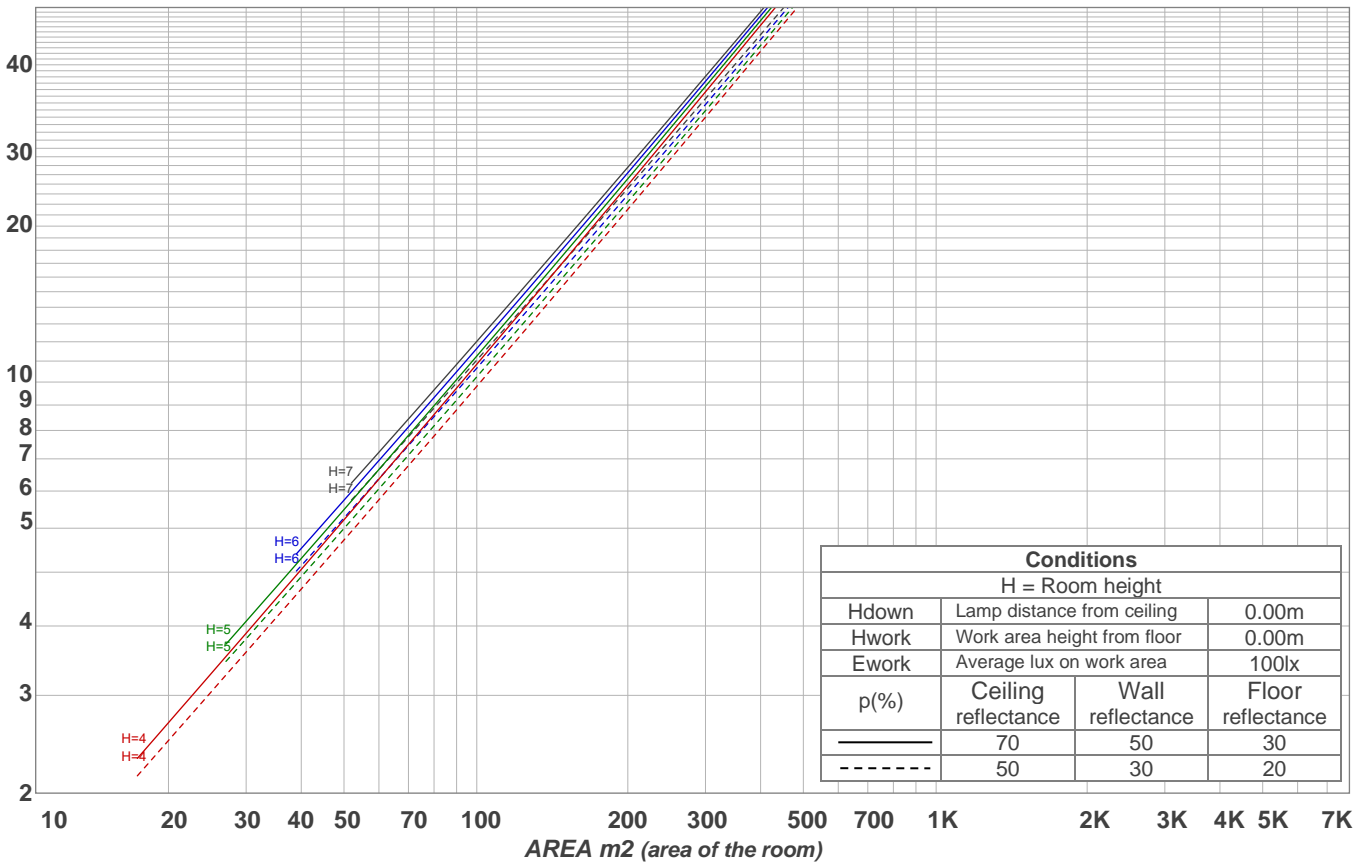
Intensities in 270° c-plane

0°	2°	4°	6°	8°	10°	12°	14°	16°	18°	20°	22°	24°	26°	28°	30°	32°	34°	36°	38°
6775	6552	5656	4501	3327	2339	1664	1243	981	799	663	544	420	276	145	54	11	7	7	6
100%	97%	83%	66%	49%	35%	25%	18%	14%	12%	10%	8%	6%	4%	2%	1%	0%	0%	0%	0%

Beam angle 50%	Field angle 10%	Cutoff angle 2,5%	Intensity ratio in 120° cone	Intensity ratio in 90° cone
15.8°	40.8°	57.4°	98.7%	98.1%

LAMPS (number of lamps)
50

Light planning Luminaire budgetary diagram



Luminaire budgetary diagram AREA m2 (area of the room) Coefficients of Utilization

Ceiling reflectance	80				70				50			30			10			0			
Wall reflectance	70	50	30	10	70	50	30	10	50	30	10	50	30	10	50	30	10	50	30	10	0
Floor reflectance	20	20	20	20	20	20	20	20	20	20	20	20	20	20	20	20	20	20	20	20	0
RCR	(RCR: Room Cavity Ratio)																				
	Room Values are expressed as percentage of Lumens delivered to the task surface																				
0	119	119	119	119	116	116	116	116	111	111	111	106	106	106	102	102	102	100	100	100	
1	115	113	111	109	113	111	109	107	107	105	104	103	102	101	100	99	98	96	96	96	
2	111	108	104	102	109	106	103	101	103	101	99	100	98	97	97	96	95	93	93	93	
3	108	103	100	97	106	102	99	96	99	97	94	97	95	93	95	93	92	90	90	90	
4	105	99	95	92	103	98	95	92	96	93	91	94	92	90	93	91	89	88	88	88	
5	102	96	92	89	100	95	91	88	93	90	88	92	89	87	91	88	86	85	85	85	
6	99	93	89	86	98	92	88	86	91	87	85	90	87	84	88	86	84	83	83	83	
7	96	90	86	83	95	89	86	83	88	85	83	87	84	82	86	84	82	81	81	81	
8	94	87	83	81	93	87	83	81	86	83	80	85	82	80	84	82	80	79	79	79	
9	92	85	81	79	91	85	81	78	84	81	78	83	80	78	83	80	78	77	77	77	
10	89	83	79	77	89	83	79	76	82	79	76	81	78	76	81	78	76	75	75	75	

Zonal Lumen Summary

0°-10°	10°-20°	20°-30°	30°-40°	40°-50°	50°-60°	60°-70°	70°-80°	80°-90°
392 lm	338 lm	179 lm	11.0 lm	3.62 lm	4.19 lm	3.92 lm	3.78 lm	4.25 lm
90°-100°	100°-110°	110°-120°	120°-130°	130°-140°	140°-150°	150°-160°	160°-170°	170°-180°
0.000 lm	0.000 lm	0.000 lm	0.000 lm	0.000 lm	0.000 lm	0.000 lm	0.000 lm	0.000 lm