

Light efficiency:



Output: 912 lm

Light quality:

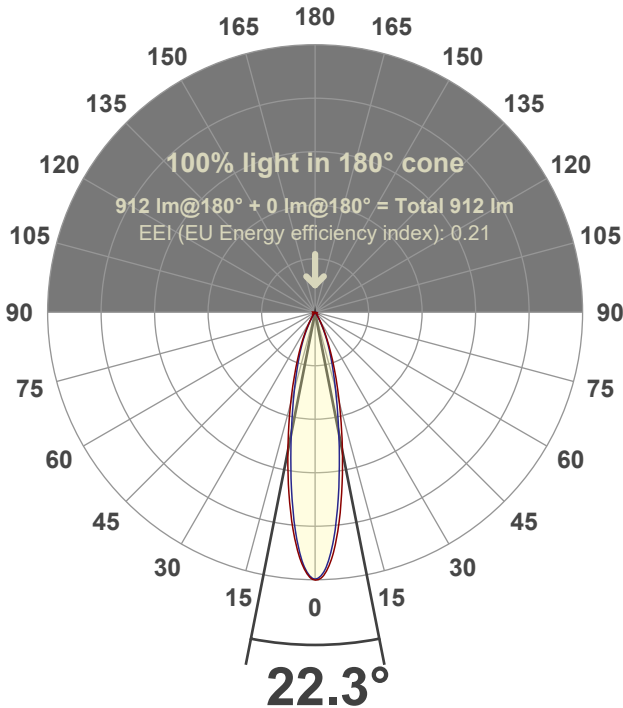


Peak: 4072 cd

Power: 15.1 W



Beam angle



Test number:

GR-F-A14-2722-SP-SQ-91A-Rev2

Luminaire Model:

Graffiti Regress Square Fixed Downlight-A14-2722 15° Optic-Solite

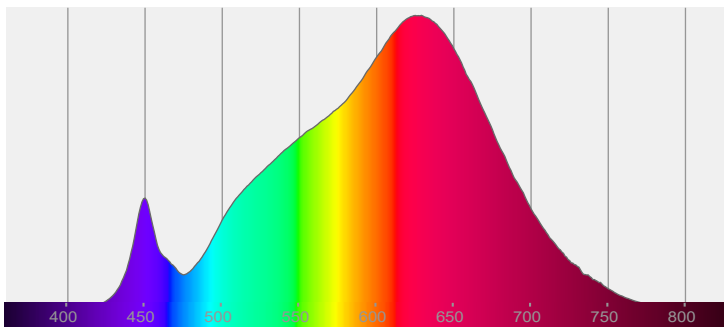
Date and time:

6/30/2022 5:21:18 PM

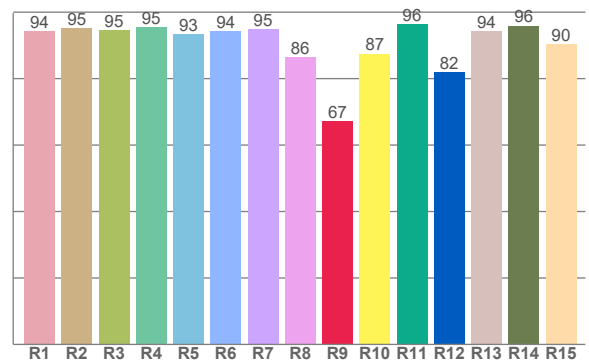
Delivered Lumens

912

Spectra



CRI: 93.5 (R1-R8)



Color parameters

Color rendering index	Red component	Color fidelity	Color gamut	Color quality scale	Color coordinate cie 1931	Color coordinate cie 1931	Color coordinate	Color coordinate	Color divition from black body
CRI	CRI R9	TM30 R <sub>f</sub>	TM30 R <sub>g</sub>	CQS	x	y	u	v	Δuv
93.5	67.2	92.8	100.7	91.5	0.458	0.415	0.260	0.352	0.0016

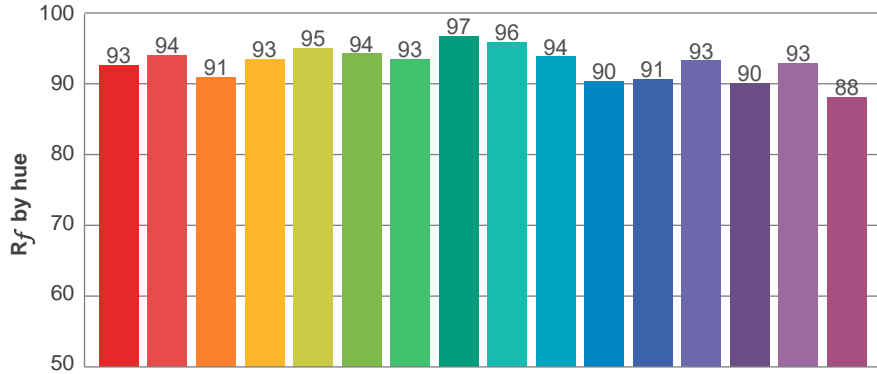
**$R_f$  92.8**  
Fidelity index  $R_f$

---

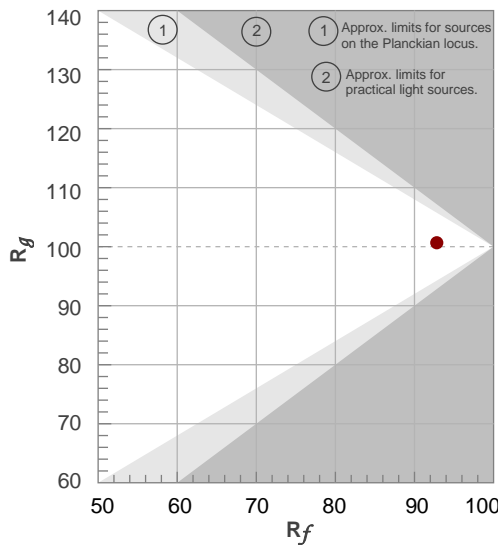
**$R_g$  100.7**  
Gammut index  $R_g$

TM30: 92.8

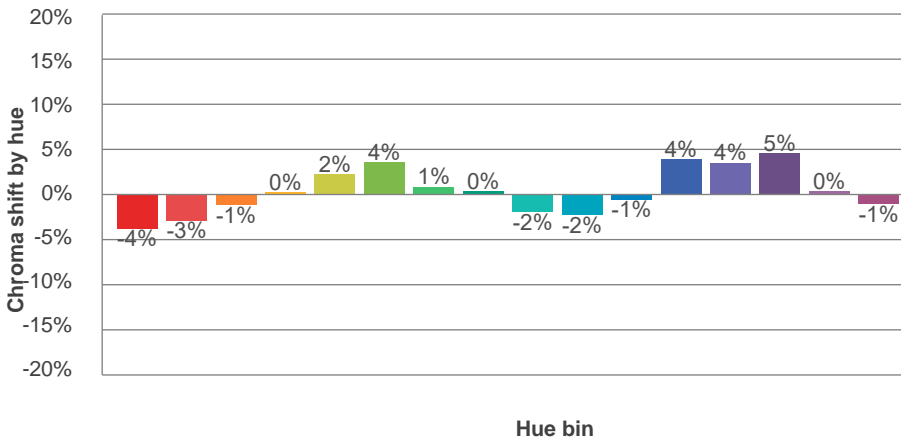
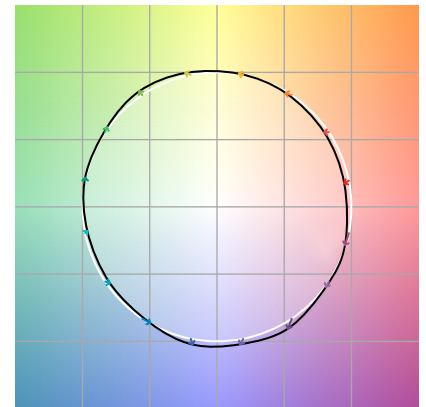
TM-30Color



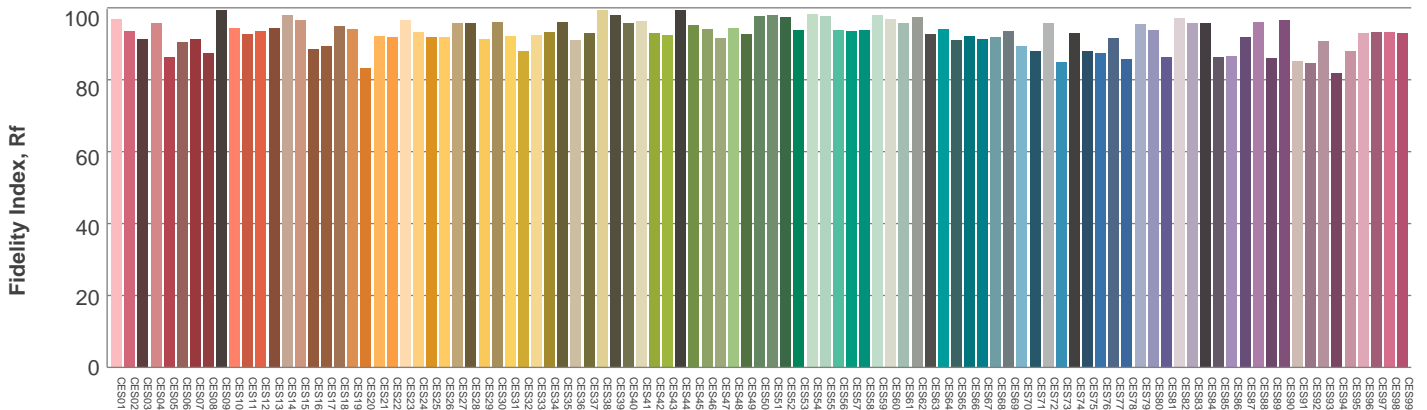
Hue Bin	$R_f$	Graphic shifts (%)	
		Chroma	Hue
1	93	-4%	-1%
2	94	-3%	2%
3	91	-1%	5%
4	93	0%	3%
5	95	2%	4%
6	94	4%	0%
7	93	1%	-4%
8	97	0%	-2%
9	96	-2%	-1%
10	94	-2%	3%
11	90	-1%	7%
12	91	4%	2%
13	93	4%	-3%
14	90	5%	-6%
15	93	0%	-4%
16	88	-1%	-9%



Color vector graphics

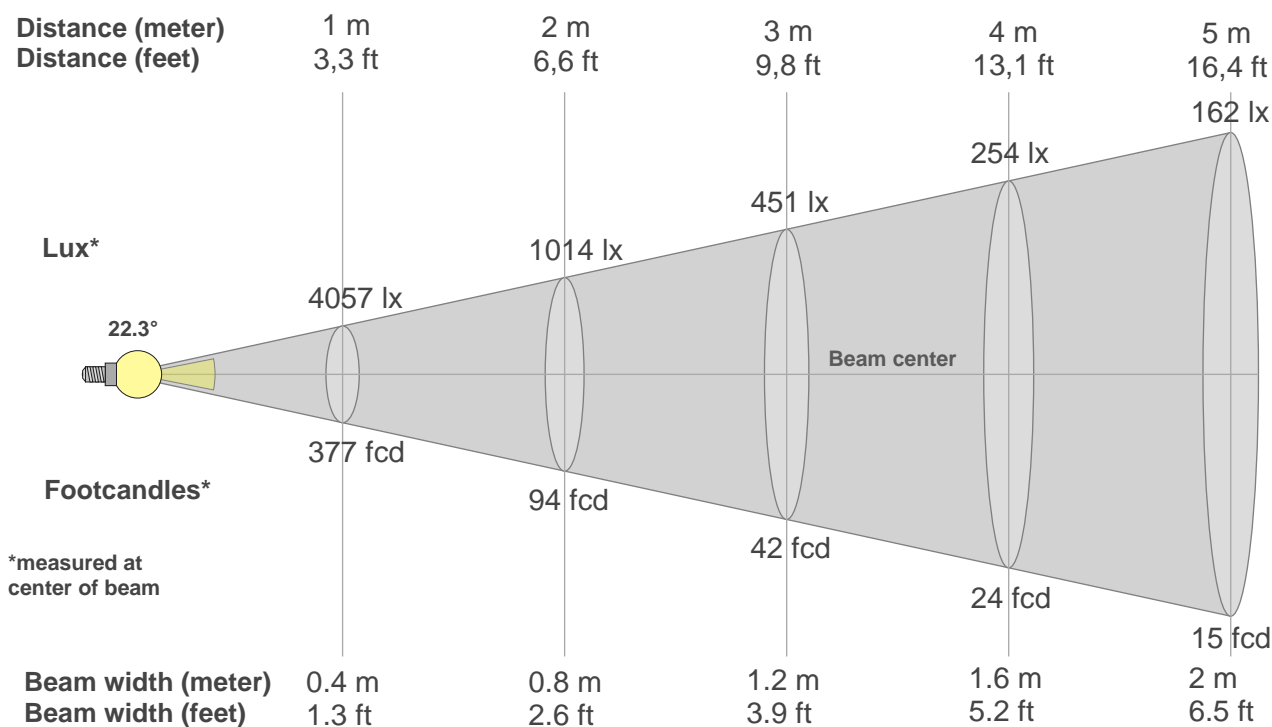


Color distortion



Color Evaluation Sample

### Beam details



#### Beam intensities from 1-20m

1m	2m	3m	4m	5m	6m	7m	8m	9m	10m	11m	12m	13m	14m	15m	16m	17m	18m	19m	20m
3.3ft	6.6ft	9.8ft	13.1ft	16.4ft	19.7ft	23ft	26.2ft	29.5ft	32.8ft	36.1ft	39.4ft	42.7ft	45.9ft	49.2ft	52.5ft	55.8ft	59.1ft	62.3ft	65.6ft
4057lx	1014lx	451lx	254lx	162lx	113lx	83lx	63lx	50lx	41lx	34lx	28lx	24lx	21lx	18lx	16lx	14lx	13lx	11lx	10lx
377fcd	94.2fcd	41.9fcd	23.6fcd	15.1fcd	10.5fcd	7.7fcd	5.9fcd	4.7fcd	3.8fcd	3.1fcd	2.6fcd	2.2fcd	1.9fcd	1.7fcd	1.5fcd	1.3fcd	1.2fcd	1fcd	0.9fcd

#### Intensities in 0° c-plane

0°	2°	4°	6°	8°	10°	12°	14°	16°	18°	20°	22°	24°	26°	28°	30°	32°	34°	36°	38°
4057	3993	3744	3337	2881	2424	1995	1609	1289	1021	794	605	451	330	241	174	126	92	68	52
100%	98%	92%	82%	71%	60%	49%	40%	32%	25%	20%	15%	11%	8%	6%	4%	3%	2%	2%	1%

#### Intensities in 90° c-plane

0°	2°	4°	6°	8°	10°	12°	14°	16°	18°	20°	22°	24°	26°	28°	30°	32°	34°	36°	38°
4057	3947	3605	3145	2636	2139	1704	1359	1083	861	680	529	400	291	202	135	88	60	43	29
100%	97%	89%	78%	65%	53%	42%	34%	27%	21%	17%	13%	10%	7%	5%	3%	2%	1%	1%	1%

#### Intensities in 180° c-plane

0°	2°	4°	6°	8°	10°	12°	14°	16°	18°	20°	22°	24°	26°	28°	30°	32°	34°	36°	38°
4057	3943	3674	3293	2849	2406	1995	1627	1306	1034	822	645	496	371	269	197	143	104	76	56
100%	97%	91%	81%	70%	59%	49%	40%	32%	25%	20%	16%	12%	9%	7%	5%	4%	3%	2%	1%

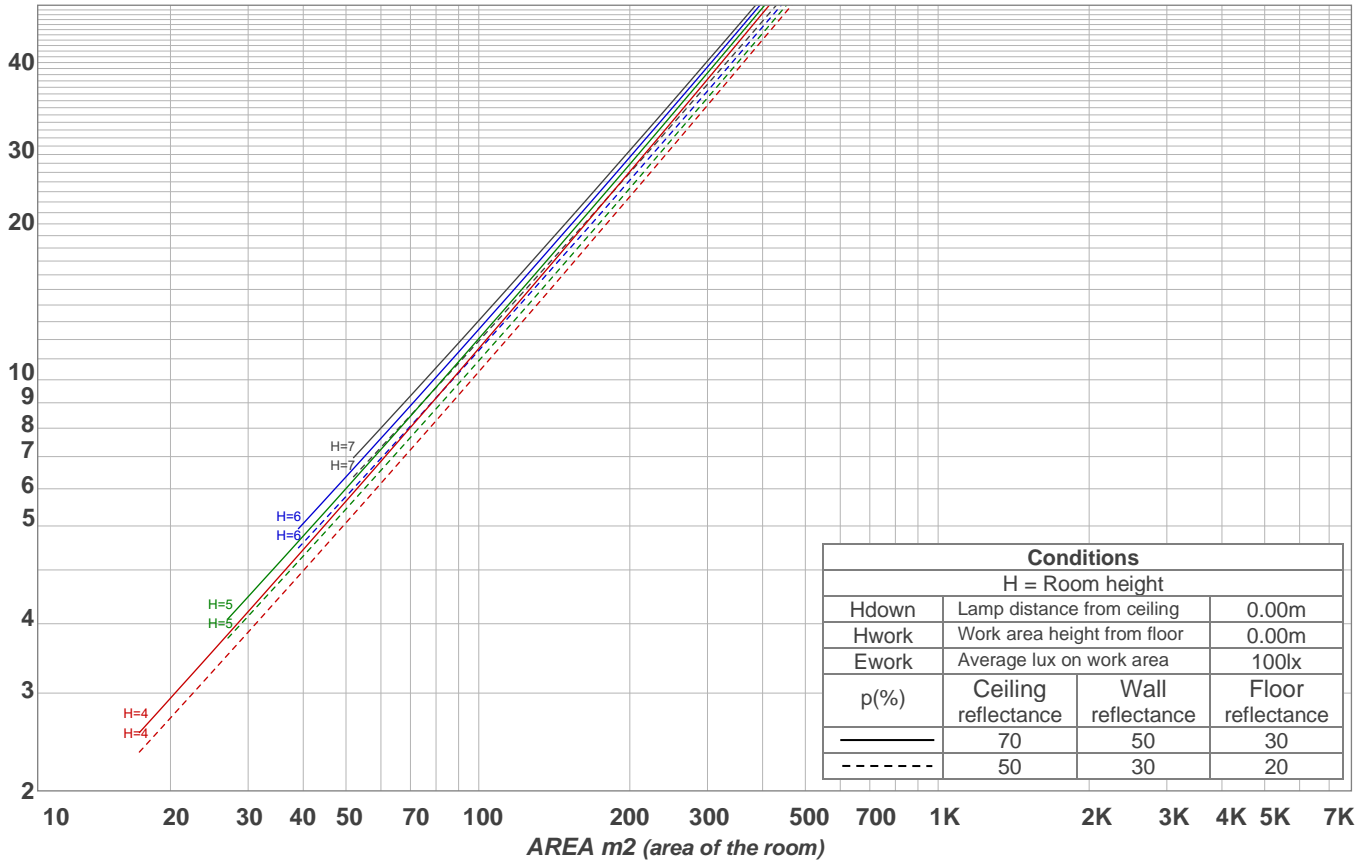
#### Intensities in 270° c-plane

0°	2°	4°	6°	8°	10°	12°	14°	16°	18°	20°	22°	24°	26°	28°	30°	32°	34°	36°	38°
4057	3914	3588	3139	2632	2138	1725	1383	1106	884	703	556	428	313	216	143	97	68	48	33
100%	96%	88%	77%	65%	53%	43%	34%	27%	22%	17%	14%	11%	8%	5%	4%	2%	2%	1%	1%

Beam angle 50%	Field angle 10%	Cutoff angle 2,5%	Intensity ratio in 120° cone	Intensity ratio in 90° cone
22.3°	49.2°	65.3°	99.2%	98.2%

LAMPS (number of lamps)  
50

### Light planning Luminaire budgetary diagram



### Luminaire budgetary diagram AREA m2 (area of the room) Coefficients of Utilization

Ceiling reflectance	80				70				50			30			10			0			
Wall reflectance	70	50	30	10	70	50	30	10	50	30	10	50	30	10	50	30	10	50	30	10	0
Floor reflectance	20	20	20	20	20	20	20	20	20	20	20	20	20	20	20	20	20	20	20	20	0
RCR	(RCR: Room Cavity Ratio)																				
	Room Values are expressed as percentage of Lumens delivered to the task surface																				
0	119	119	119	119	116	116	116	116	111	111	111	106	106	106	102	102	102	100	100	100	
1	115	112	110	109	112	110	108	107	106	105	104	103	101	100	99	98	98	96	96	96	
2	111	107	104	101	108	105	102	100	102	100	98	99	97	96	96	95	94	92	92	92	
3	107	102	98	95	105	100	97	94	98	95	93	96	93	91	94	92	90	89	89	89	
4	103	97	93	90	102	96	92	89	94	91	88	92	90	87	91	88	86	85	85	85	
5	100	93	89	86	98	93	89	85	91	87	85	89	86	84	88	85	83	82	82	82	
6	97	90	85	82	95	89	85	82	88	84	82	87	83	81	85	83	80	79	79	79	
7	94	87	82	79	93	86	82	79	85	81	79	84	81	78	83	80	78	77	77	77	
8	91	84	79	76	90	83	79	76	82	79	76	81	78	76	81	78	75	74	74	74	
9	88	81	77	74	87	81	77	74	80	76	73	79	76	73	78	75	73	72	72	72	
10	86	79	74	71	85	78	74	71	78	74	71	77	73	71	76	73	71	70	70	70	

### Zonal Lumen Summary

0°-10°	10°-20°	20°-30°	30°-40°	40°-50°	50°-60°	60°-70°	70°-80°	80°-90°
290 lm	372 lm	179 lm	46.9 lm	11.9 lm	4.66 lm	3.11 lm	2.01 lm	2.27 lm

90°-100°	100°-110°	110°-120°	120°-130°	130°-140°	140°-150°	150°-160°	160°-170°	170°-180°
0.000 lm	0.000 lm	0.000 lm	0.000 lm	0.000 lm	0.000 lm	0.000 lm	0.000 lm	0.000 lm