

Light efficiency:



Output: 896 lm

Light quality:

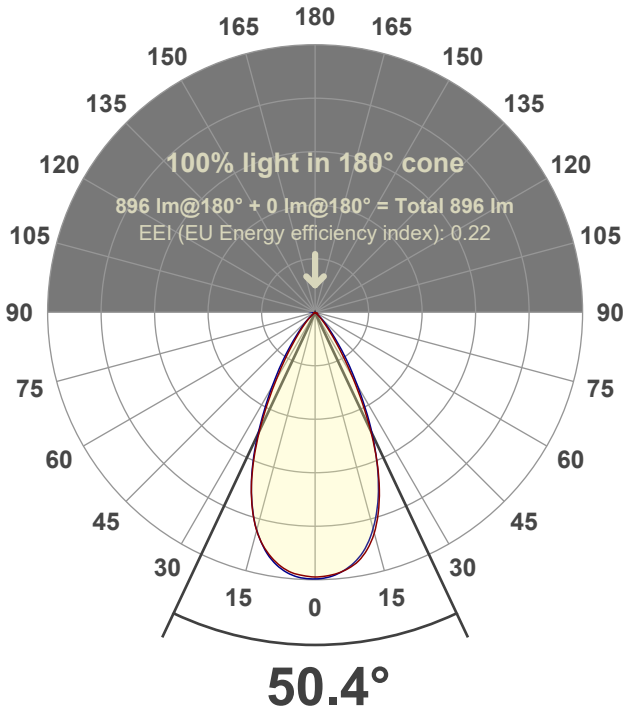


Peak: 1260 cd

Power: 15.1 W



Beam angle



Test number:

GR-F-A14-2722-WF-SQ-91A-Rev2

Luminaire Model:

Graffiti Regress Square Fixed Downlight-A14-2722 60° Optic-Solite

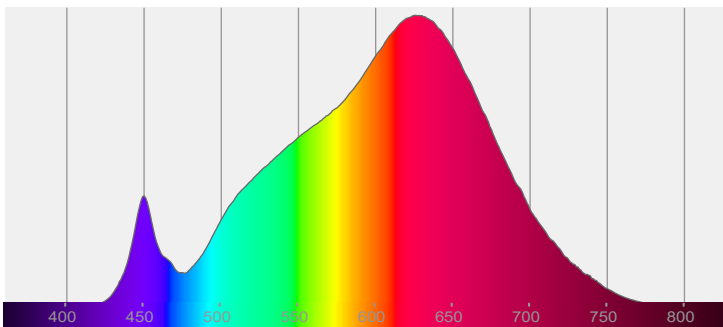
Date and time:

6/30/2022 7:13:00 PM

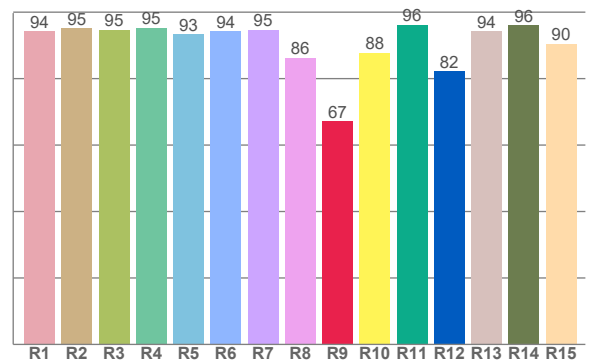
Delivered Lumens

896

Spectra



CRI: 93.5 (R1-R8)



Color parameters

Color rendering index	Red component	Color fidelity	Color gamut	Color quality scale	Color coordinate cie 1931	Color coordinate cie 1931	Color coordinate	Color coordinate	Color divition from black body
CRI	CRI R9	TM30 R <sub>f</sub>	TM30 R <sub>g</sub>	CQS	x	y	u	v	Δuv
93.5	67.1	92.7	100.8	91.5	0.457	0.414	0.260	0.352	0.0013

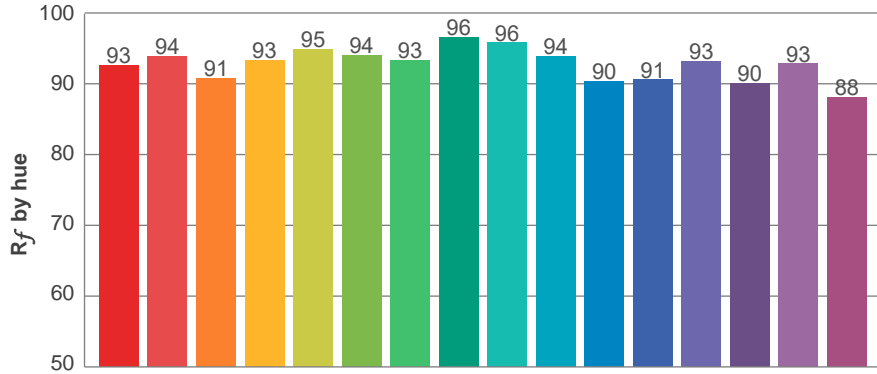
**$R_f$  92.7**  
Fidelity index  $R_f$

---

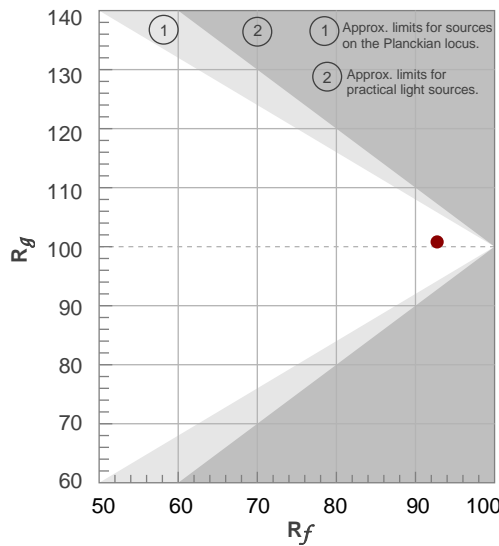
**$R_g$  100.8**  
Gammut index  $R_g$

TM30: 92.7

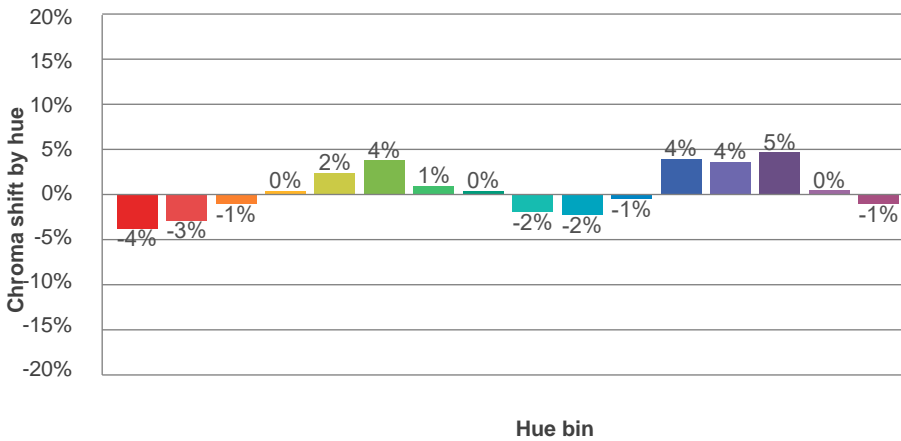
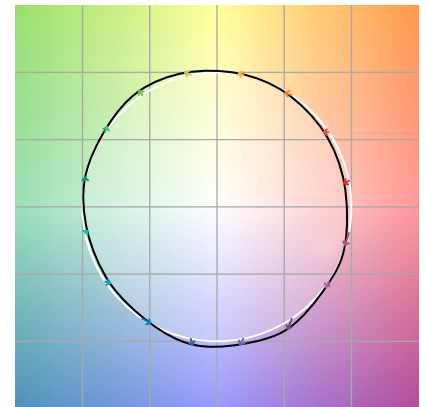
TM-30Color



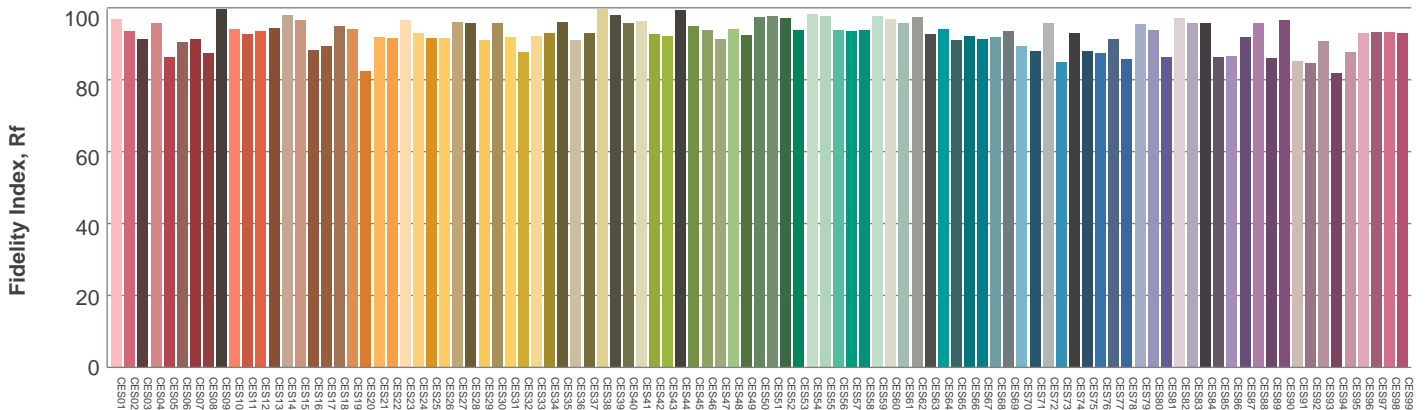
Hue Bin	$R_f$	Graphic shifts (%)	
		Chroma	Hue
1	93	-4%	-1%
2	94	-3%	2%
3	91	-1%	5%
4	93	0%	3%
5	95	2%	4%
6	94	4%	0%
7	93	1%	-4%
8	96	0%	-2%
9	96	-2%	-1%
10	94	-2%	3%
11	90	-1%	7%
12	91	4%	2%
13	93	4%	-3%
14	90	5%	-6%
15	93	0%	-4%
16	88	-1%	-9%



Color vector graphics

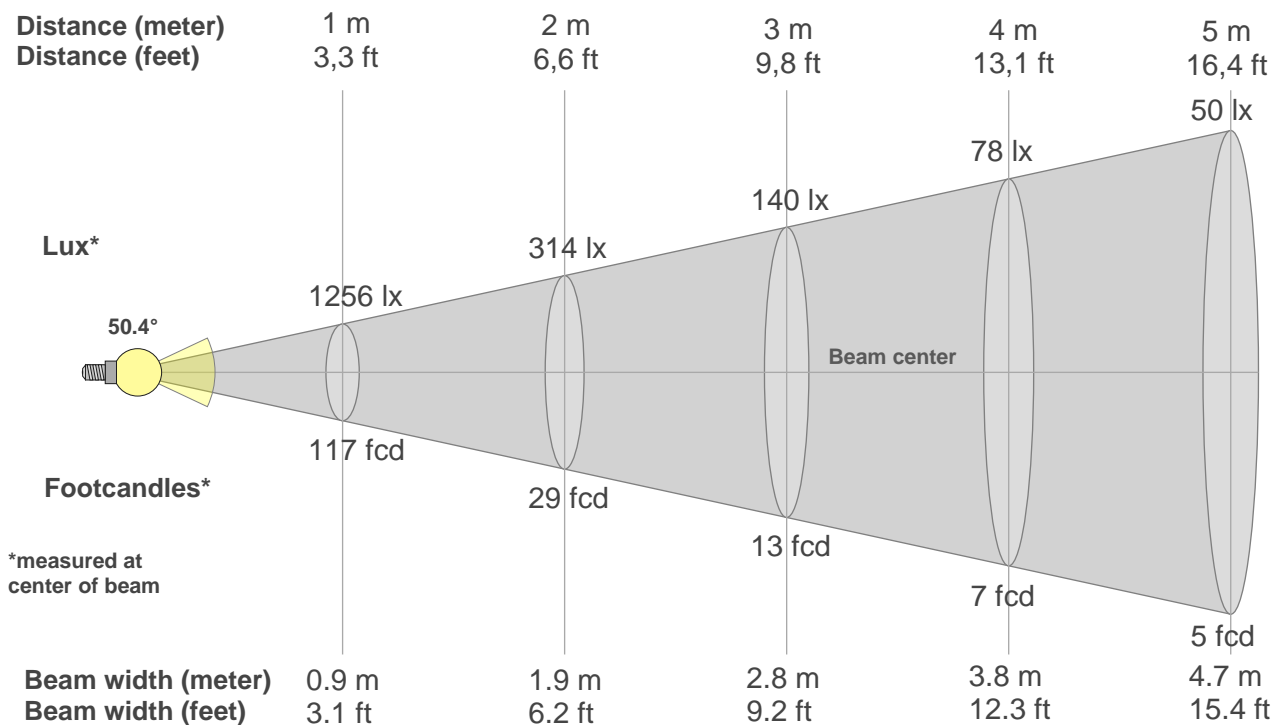


Color distortion



Color Evaluation Sample

### Beam details



#### Beam intensities from 1-20m

1m	2m	3m	4m	5m	6m	7m	8m	9m	10m	11m	12m	13m	14m	15m	16m	17m	18m	19m	20m
3.3ft	6.6ft	9.8ft	13.1ft	16.4ft	19.7ft	23ft	26.2ft	29.5ft	32.8ft	36.1ft	39.4ft	42.7ft	45.9ft	49.2ft	52.5ft	55.8ft	59.1ft	62.3ft	65.6ft
1256lx	314lx	140lx	78lx	50lx	35lx	26lx	20lx	16lx	13lx	10lx	9lx	7lx	6lx	6lx	5lx	4lx	4lx	3lx	3lx
116.6fcd	29.2fcd	13fcd	7.3fcd	4.7fcd	3.2fcd	2.4fcd	1.8fcd	1.4fcd	1.2fcd	1fcd	0.8fcd	0.7fcd	0.6fcd	0.5fcd	0.5fcd	0.4fcd	0.4fcd	0.3fcd	0.3fcd

#### Intensities in 0° c-plane

0°	2°	4°	6°	8°	10°	12°	14°	16°	18°	20°	22°	24°	26°	28°	30°	32°	34°	36°	38°
1256	1249	1242	1231	1215	1192	1156	1108	1047	974	891	793	686	575	464	361	276	207	152	110
100%	99%	99%	98%	97%	95%	92%	88%	83%	78%	71%	63%	55%	46%	37%	29%	22%	16%	12%	9%

#### Intensities in 90° c-plane

0°	2°	4°	6°	8°	10°	12°	14°	16°	18°	20°	22°	24°	26°	28°	30°	32°	34°	36°	38°
1256	1256	1248	1231	1209	1179	1139	1090	1027	957	876	788	694	597	499	408	328	259	199	151
100%	100%	99%	98%	96%	94%	91%	87%	82%	76%	70%	63%	55%	48%	40%	33%	26%	21%	16%	12%

#### Intensities in 180° c-plane

0°	2°	4°	6°	8°	10°	12°	14°	16°	18°	20°	22°	24°	26°	28°	30°	32°	34°	36°	38°
1256	1247	1240	1228	1207	1179	1141	1094	1036	965	883	787	684	577	470	373	295	229	174	132
100%	99%	99%	98%	96%	94%	91%	87%	83%	77%	70%	63%	54%	46%	37%	30%	23%	18%	14%	10%

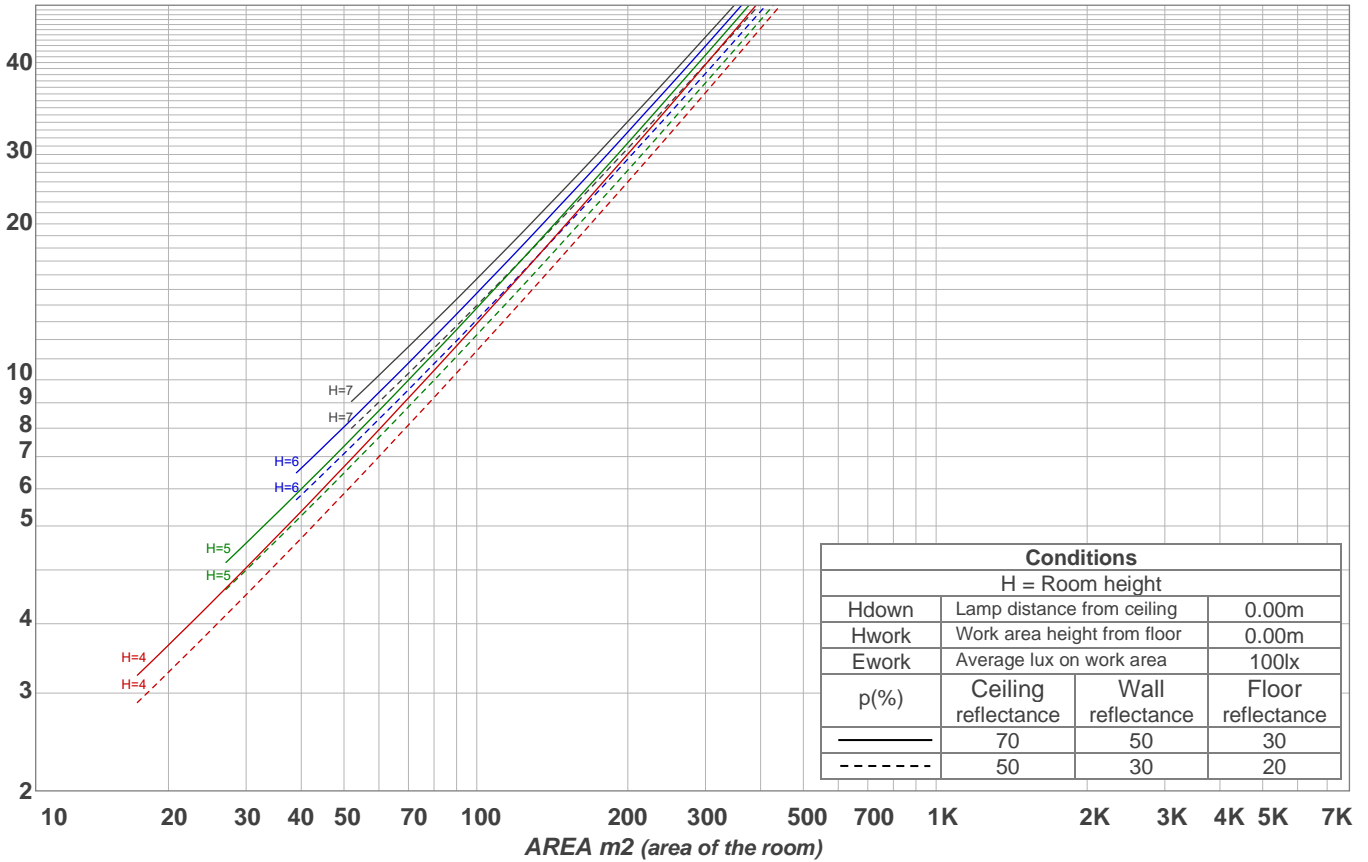
#### Intensities in 270° c-plane

0°	2°	4°	6°	8°	10°	12°	14°	16°	18°	20°	22°	24°	26°	28°	30°	32°	34°	36°	38°
1256	1259	1253	1239	1217	1186	1145	1095	1035	962	881	793	698	595	502	415	338	272	214	167
100%	100%	100%	99%	97%	94%	91%	87%	82%	77%	70%	63%	56%	47%	40%	33%	27%	22%	17%	13%

Beam angle 50%	Field angle 10%	Cutoff angle 2,5%	Intensity ratio in 120° cone	Intensity ratio in 90° cone
50.4°	77.5°	95.5°	98.9%	96.3%

LAMPS (number of lamps)  
50

### Light planning Luminaire budgetary diagram



### Luminaire budgetary diagram AREA m2 (area of the room) Coefficients of Utilization

Ceiling reflectance	80				70				50			30			10			0
Wall reflectance	70	50	30	10	70	50	30	10	50	30	10	50	30	10	50	30	10	0
Floor reflectance	20	20	20	20	20	20	20	20	20	20	20	20	20	20	20	20	20	0
RCR	(RCR: Room Cavity Ratio) Room Values are expressed as percentage of Lumens delivered to the task surface																	
0	119	119	119	119	116	116	116	116	111	111	111	106	106	106	102	102	102	100
1	114	111	109	106	111	109	107	105	105	103	101	101	100	98	98	97	96	94
2	108	104	100	96	106	102	98	95	99	96	93	96	93	91	93	91	89	88
3	103	97	92	89	101	96	91	88	93	89	86	91	88	85	88	86	84	82
4	98	91	86	82	97	90	85	81	88	84	80	86	82	80	84	81	79	77
5	94	86	80	76	92	85	80	76	83	79	75	82	78	75	80	77	74	73
6	89	81	75	71	88	80	75	71	79	74	71	77	73	70	76	72	70	68
7	85	77	71	67	84	76	71	67	75	70	66	74	69	66	72	69	66	64
8	82	73	67	63	80	72	67	63	71	66	63	70	66	62	69	65	62	61
9	78	69	63	60	77	68	63	59	68	63	59	67	62	59	66	62	59	58
10	75	66	60	56	74	65	60	56	64	60	56	64	59	56	63	59	56	55

### Zonal Lumen Summary

0°-10°	10°-20°	20°-30°	30°-40°	40°-50°	50°-60°	60°-70°	70°-80°	80°-90°
117 lm	295 lm	288 lm	136 lm	41.7 lm	9.34 lm	4.45 lm	2.60 lm	2.42 lm

90°-100°	100°-110°	110°-120°	120°-130°	130°-140°	140°-150°	150°-160°	160°-170°	170°-180°
0.000 lm	0.000 lm	0.000 lm	0.000 lm	0.000 lm	0.000 lm	0.000 lm	0.000 lm	0.000 lm

[www.graffitilighting.com](http://www.graffitilighting.com) As a result of our continuous improvement, values are subject to change without notice. These are delivered results and can vary +/- 10% from published source data range.