

Light efficiency:



Output: 787 lm

Light quality:

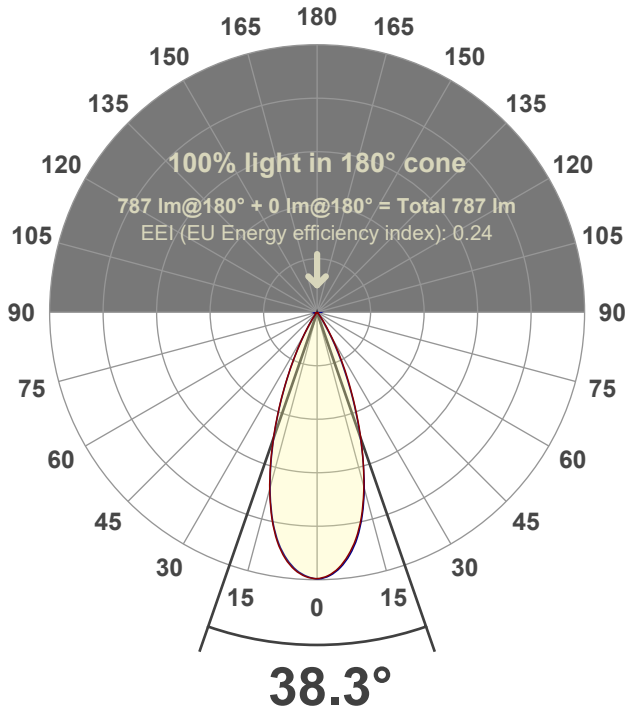


Peak: 1811 cd

Power: 14.6 W



Beam angle



Test number:

GR-F-A14-3019-FL-RD-91A-Rev2

Luminaire Model:

Graffiti Regress Round Fixed Downlight-A14-3019 38° Optic-Solite

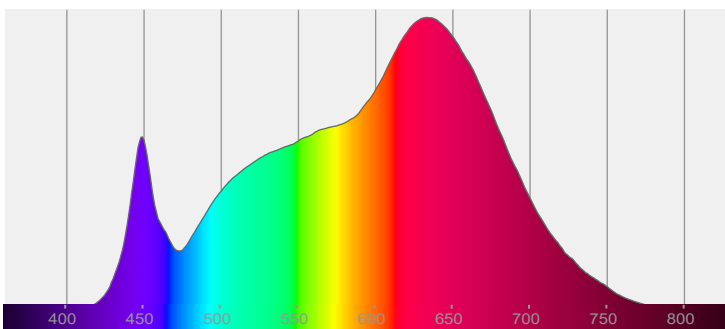
Date and time:

3/24/2022 9:47:26 PM

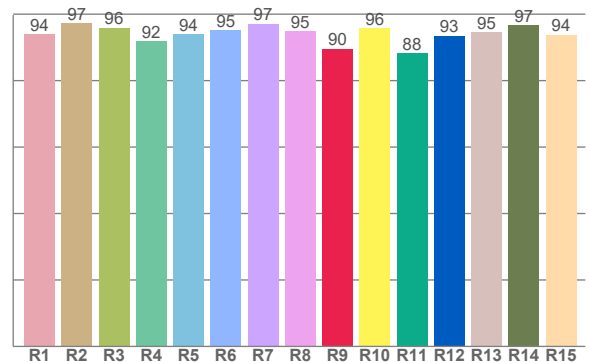
Delivered Lumens

787

Spectra



CRI: 95.0 (R1-R8)



Color parameters

Color rendering index	Red component	Color fidelity	Color gamut	Color quality scale	Color coordinate cie 1931	Color coordinate cie 1931	Color coordinate	Color coordinate	Color diviation from black body
CRI	CRI R9	TM30 R <sub>f</sub>	TM30 R <sub>g</sub>	CQS	x	y	u	v	Δuv
95.0	89.5	94.9	105.4	95.0	0.423	0.388	0.248	0.342	-0.0046

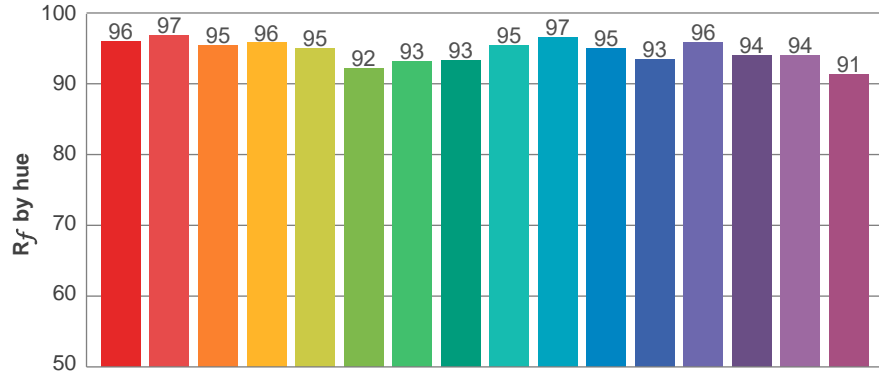
**$R_f$  94.9**  
Fidelity index  $R_f$

---

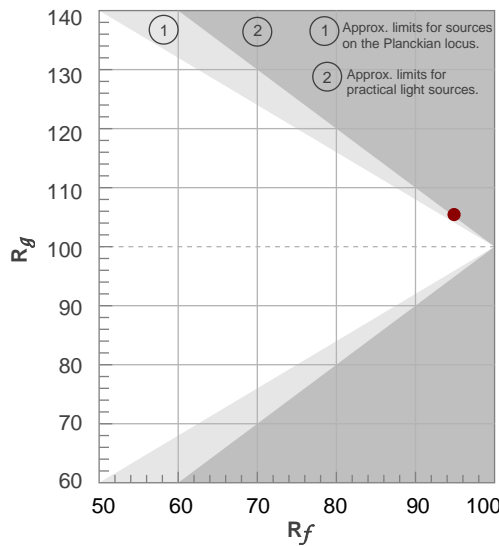
**$R_g$  105.4**  
Gammut index  $R_g$

TM30: 94.9

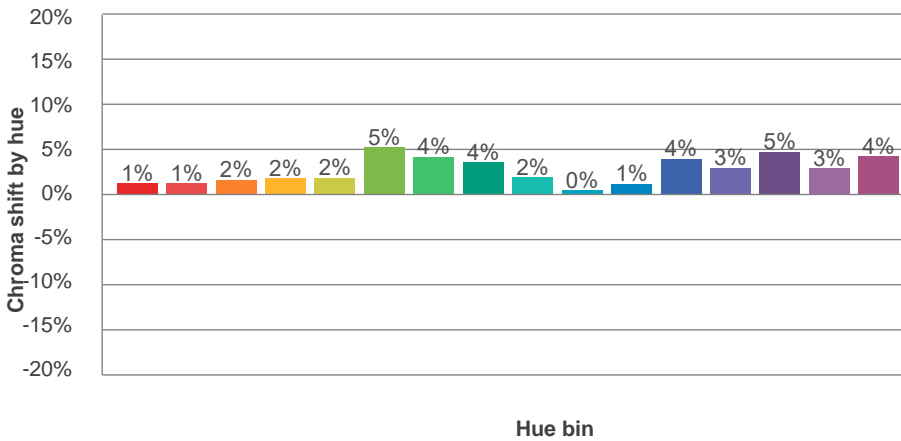
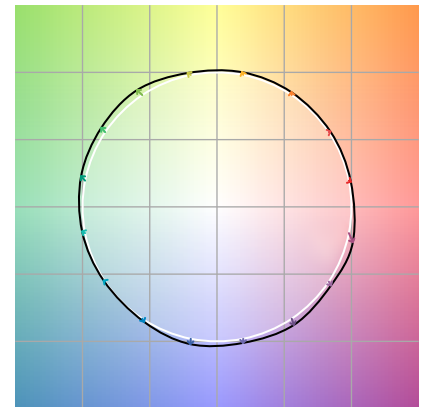
TM-30Color



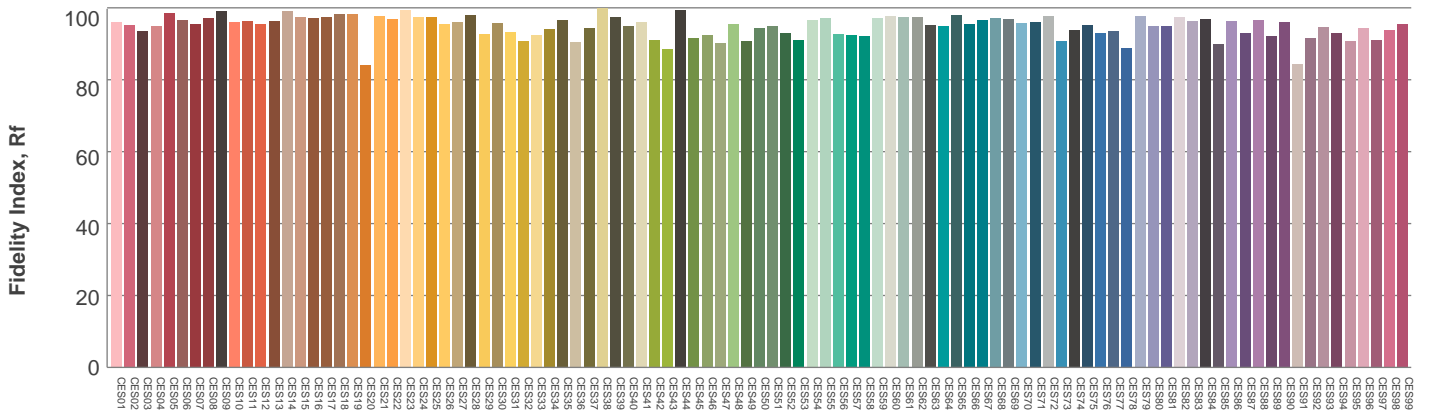
Hue Bin	$R_f$	Graphic shifts (%)	
		Chroma	Hue
1	96	1%	-1%
2	97	1%	0%
3	95	2%	1%
4	96	2%	1%
5	95	2%	2%
6	92	5%	1%
7	93	4%	-1%
8	93	4%	-3%
9	95	2%	-2%
10	97	0%	-1%
11	95	1%	2%
12	93	4%	0%
13	96	3%	-1%
14	94	5%	-1%
15	94	3%	-1%
16	91	4%	-6%



Color vector graphics



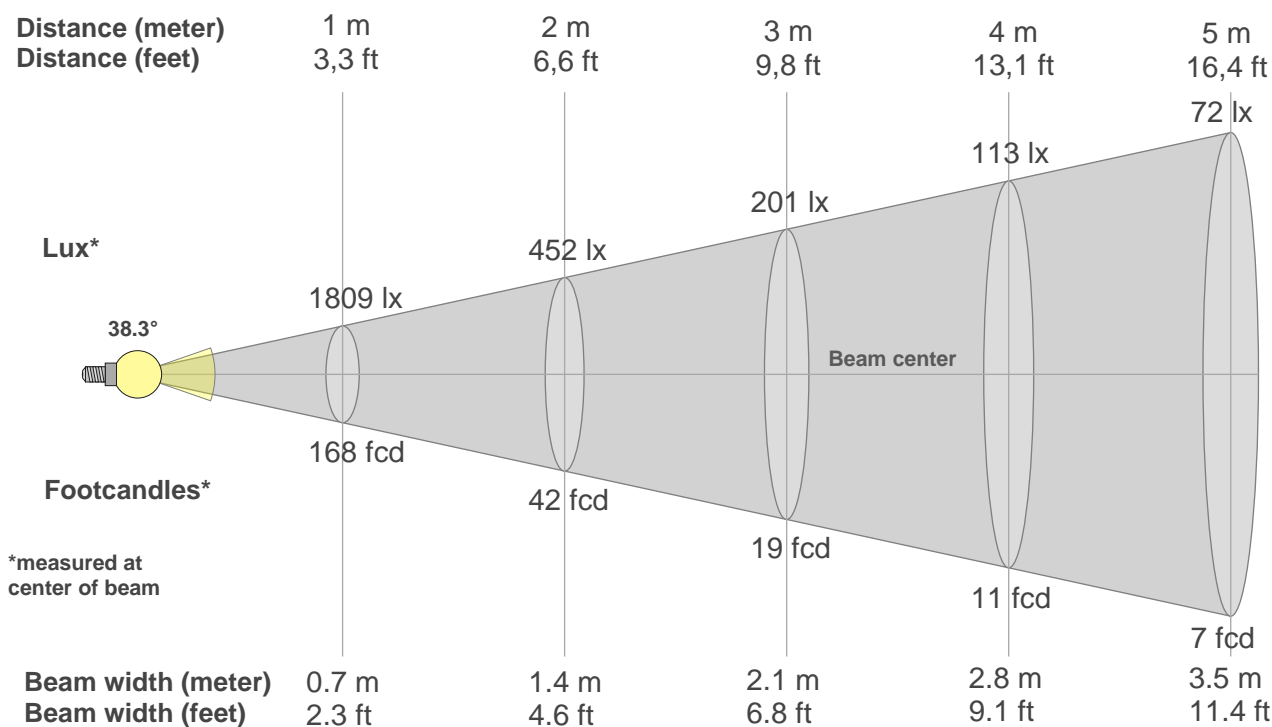
Color distortion



Color Evaluation Sample

[www.graffitilighting.com](http://www.graffitilighting.com) As a result of our continuous improvement, values are subject to change without notice. These are delivered results and can vary +/- 10% from published source data range.

### Beam details



#### Beam intensities from 1-20m

1m	2m	3m	4m	5m	6m	7m	8m	9m	10m	11m	12m	13m	14m	15m	16m	17m	18m	19m	20m
3.3ft	6.6ft	9.8ft	13.1ft	16.4ft	19.7ft	23ft	26.2ft	29.5ft	32.8ft	36.1ft	39.4ft	42.7ft	45.9ft	49.2ft	52.5ft	55.8ft	59.1ft	62.3ft	65.6ft
1809lx	452lx	201lx	113lx	72lx	50lx	37lx	28lx	22lx	18lx	15lx	13lx	11lx	9lx	8lx	7lx	6lx	6lx	5lx	5lx
168fcd	42fcd	18.7fcd	10.5fcd	6.7fcd	4.7fcd	3.4fcd	2.6fcd	2.1fcd	1.7fcd	1.4fcd	1.2fcd	1fcd	0.9fcd	0.7fcd	0.7fcd	0.6fcd	0.5fcd	0.5fcd	0.4fcd

#### Intensities in 0° c-plane

0°	2°	4°	6°	8°	10°	12°	14°	16°	18°	20°	22°	24°	26°	28°	30°	32°	34°	36°	38°
1809	1793	1759	1705	1634	1547	1436	1301	1153	999	843	689	550	426	317	225	151	103	71	48
100%	99%	97%	94%	90%	86%	79%	72%	64%	55%	47%	38%	30%	24%	18%	12%	8%	6%	4%	3%

#### Intensities in 90° c-plane

0°	2°	4°	6°	8°	10°	12°	14°	16°	18°	20°	22°	24°	26°	28°	30°	32°	34°	36°	38°
1809	1797	1766	1716	1649	1561	1446	1311	1158	993	829	674	528	397	285	192	125	81	53	35
100%	99%	98%	95%	91%	86%	80%	73%	64%	55%	46%	37%	29%	22%	16%	11%	7%	4%	3%	2%

#### Intensities in 180° c-plane

0°	2°	4°	6°	8°	10°	12°	14°	16°	18°	20°	22°	24°	26°	28°	30°	32°	34°	36°	38°
1809	1799	1772	1727	1661	1574	1457	1319	1167	1005	840	680	533	402	290	199	132	91	62	43
100%	99%	98%	95%	92%	87%	81%	73%	65%	56%	46%	38%	29%	22%	16%	11%	7%	5%	3%	2%

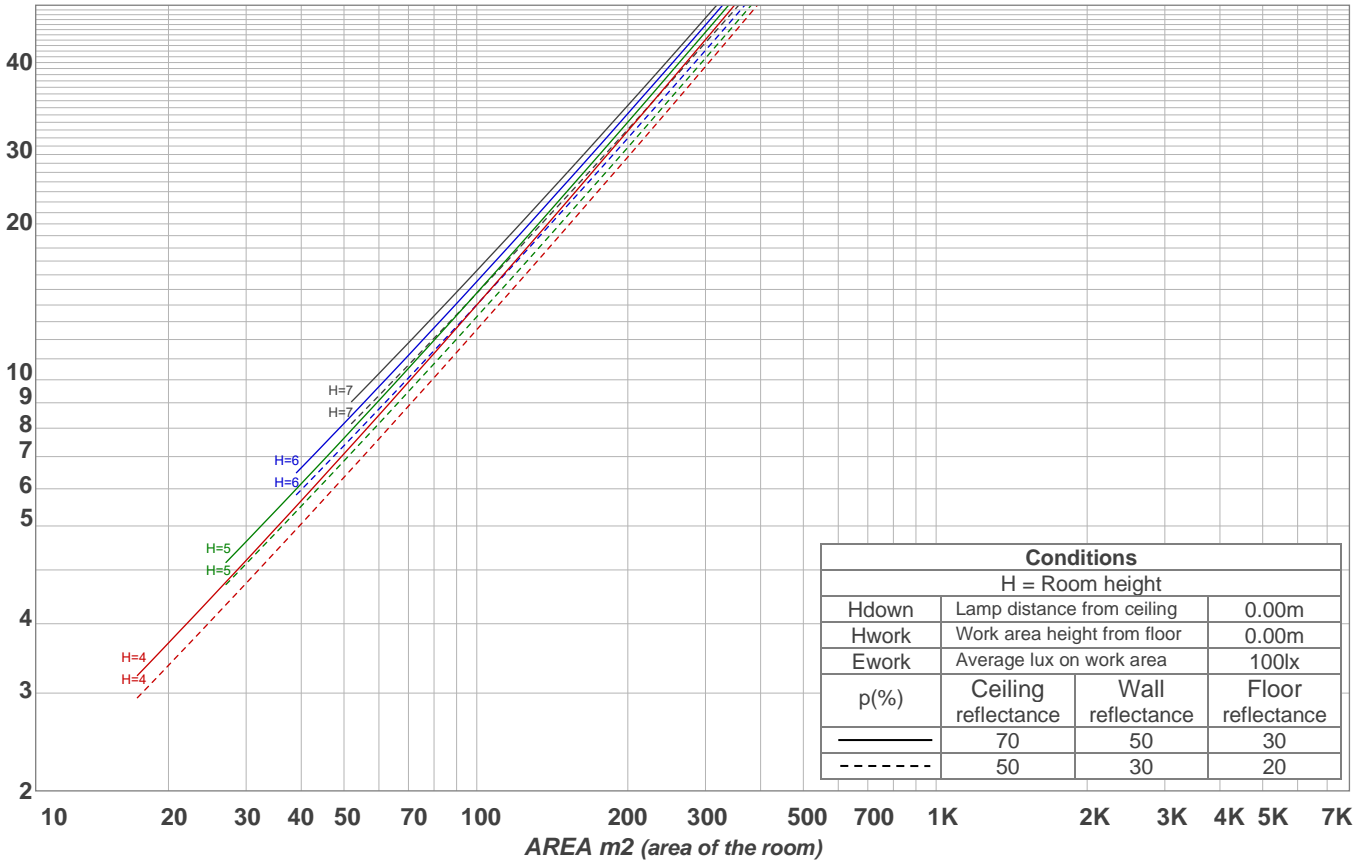
#### Intensities in 270° c-plane

0°	2°	4°	6°	8°	10°	12°	14°	16°	18°	20°	22°	24°	26°	28°	30°	32°	34°	36°	38°
1809	1797	1766	1717	1649	1561	1450	1311	1156	994	830	670	521	390	279	190	124	78	53	36
100%	99%	98%	95%	91%	86%	80%	72%	64%	55%	46%	37%	29%	22%	15%	11%	7%	4%	3%	2%

Beam angle 50%	Field angle 10%	Cutoff angle 2,5%	Intensity ratio in 120° cone	Intensity ratio in 90° cone
<b>38.3°</b>	<b>61.1°</b>	<b>74.7°</b>	<b>99.0%</b>	<b>97.8%</b>

LAMPS (number of lamps)  
50

### Light planning Luminaire budgetary diagram



### Luminaire budgetary diagram AREA m2 (area of the room) Coefficients of Utilization

Ceiling reflectance	80				70				50			30			10			0			
Wall reflectance	70	50	30	10	70	50	30	10	50	30	10	50	30	10	50	30	10	50	30	10	0
Floor reflectance	20	20	20	20	20	20	20	20	20	20	20	20	20	20	20	20	20	20	20	20	0
RCR	(RCR: Room Cavity Ratio) Room Values are expressed as percentage of Lumens delivered to the task surface																				
0	119	119	119	119	116	116	116	116	111	111	111	106	106	106	102	102	102	100	100	100	100
1	114	112	110	108	112	110	108	106	106	104	103	102	101	100	99	98	97	95	95	95	95
2	110	106	102	99	108	104	101	98	101	98	96	98	96	94	95	93	92	90	90	90	90
3	105	100	96	92	103	99	95	92	96	93	90	94	91	89	92	89	87	86	86	86	86
4	101	95	90	87	100	94	90	86	92	88	85	90	87	84	88	86	83	82	82	82	82
5	97	91	86	82	96	90	85	82	88	84	81	86	83	80	85	82	80	78	78	78	78
6	94	86	81	78	92	86	81	78	84	80	77	83	79	77	82	79	76	75	75	75	75
7	90	83	78	74	89	82	77	74	81	77	74	80	76	73	79	76	73	72	72	72	72
8	87	79	74	71	86	79	74	71	78	74	71	77	73	70	76	73	70	69	69	69	69
9	84	76	71	68	83	76	71	68	75	71	68	74	70	67	73	70	67	66	66	66	66
10	81	73	68	65	80	73	68	65	72	68	65	71	68	65	71	67	65	64	64	64	64

### Zonal Lumen Summary

0°-10°	10°-20°	20°-30°	30°-40°	40°-50°	50°-60°	60°-70°	70°-80°	80°-90°
161 lm	335 lm	214 lm	51.8 lm	11.7 lm	5.59 lm	3.49 lm	2.09 lm	2.05 lm
90°-100°	100°-110°	110°-120°	120°-130°	130°-140°	140°-150°	150°-160°	160°-170°	170°-180°
0.000 lm	0.000 lm	0.000 lm	0.000 lm	0.000 lm	0.000 lm	0.000 lm	0.000 lm	0.000 lm

[www.graffitilighting.com](http://www.graffitilighting.com) As a result of our continuous improvement, values are subject to change without notice. These are delivered results and can vary +/- 10% from published source data range.