

Light efficiency:



Output: 812 lm

Light quality:

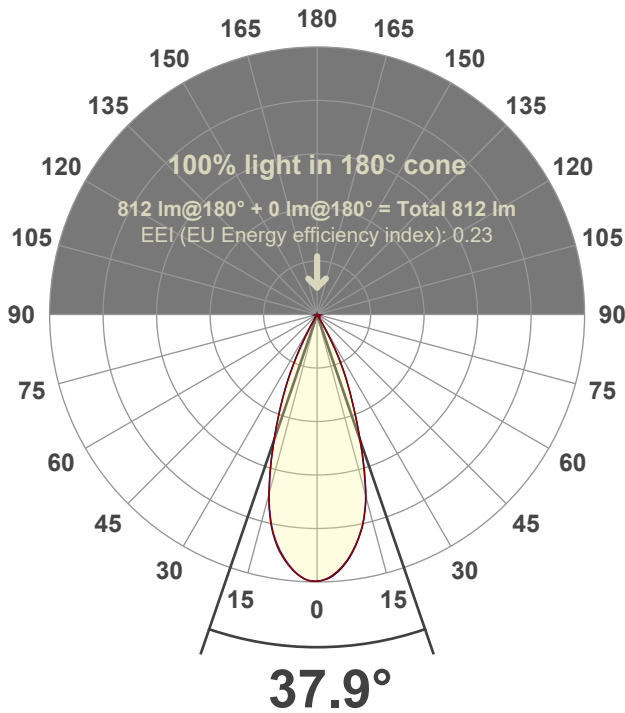


Peak: 2064 cd

Power: 14.6 W



Beam angle



Test number:

GR-F-A14-3019-FL-RD-Rev2

Luminaire Model:

Graffiti Regress Round Fixed Downlight-A14-3019 38° Optic

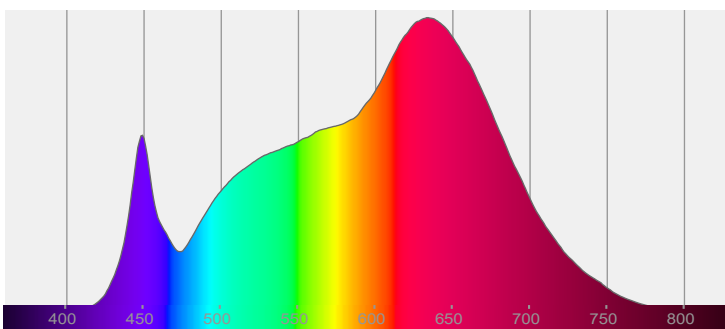
Date and time:

3/24/2022 9:54:58 PM

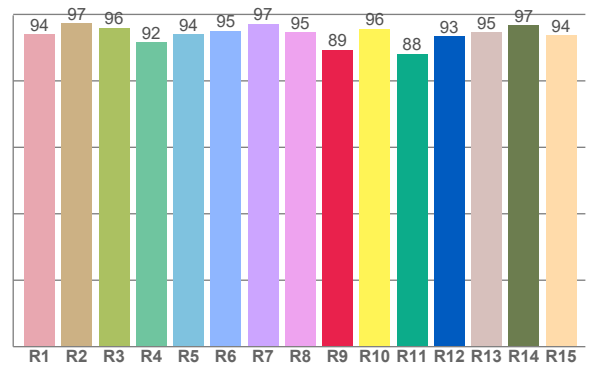
Delivered Lumens

812

Spectra



CRI: 95.0 (R1-R8)



Color parameters

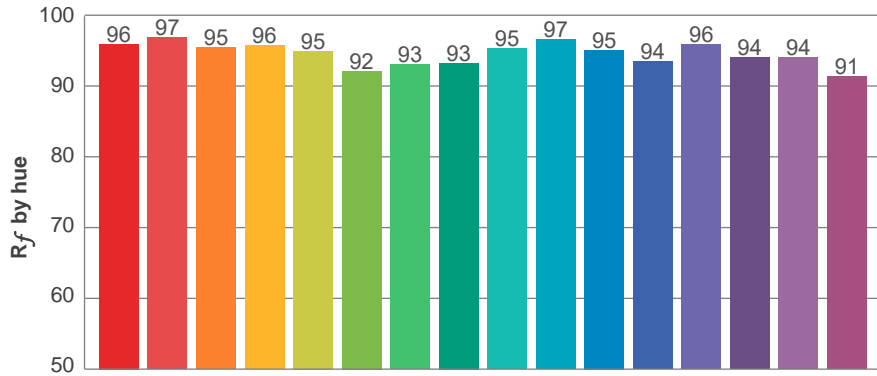
	Color rendering index	Red component	Color fidelity	Color gamut	Color quality scale	Color coordinate cie 1931	Color coordinate cie 1931	Color coordinate	Color coordinate	Color deviation from black body
	CRI	CRI R9	TM30 R _f	TM30 R _g	CQS	x	y	u	v	Δuv
	95.0	89.3	94.9	105.5	95.0	0.422	0.388	0.248	0.342	-0.0046

R_f 94.9
Fidelity index R_f

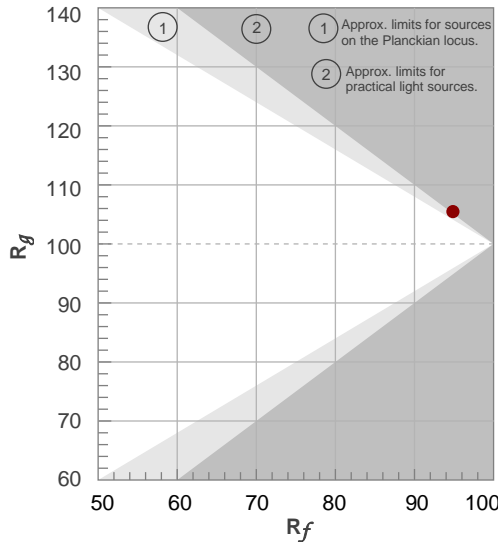
R_g 105.5
Gammut index R_g

TM30: 94.9

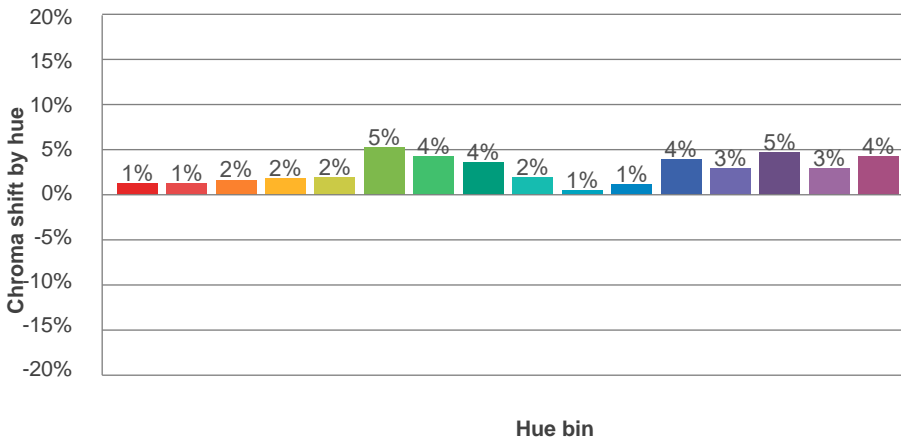
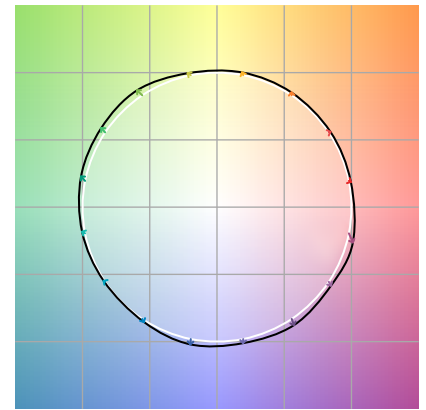
TM-30Color



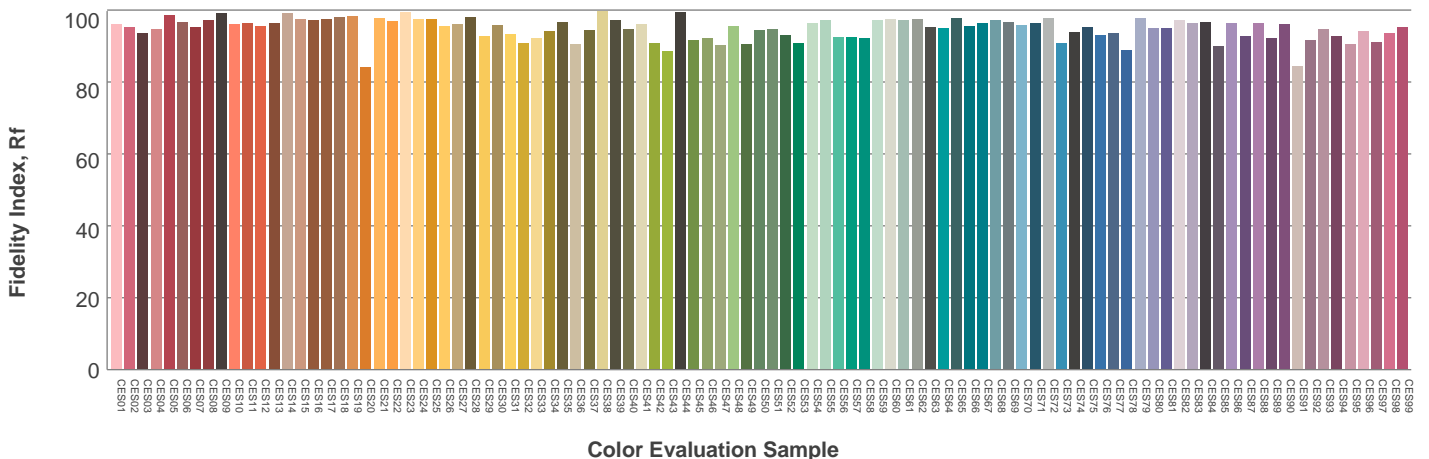
Hue Bin	R_f	Graphic shifts (%)	
		Chroma	Hue
1	96	1%	-1%
2	97	1%	0%
3	95	2%	1%
4	96	2%	1%
5	95	2%	2%
6	92	5%	1%
7	93	4%	-1%
8	93	4%	-3%
9	95	2%	-2%
10	97	1%	-1%
11	95	1%	2%
12	94	4%	0%
13	96	3%	-1%
14	94	5%	-1%
15	94	3%	-1%
16	91	4%	-6%



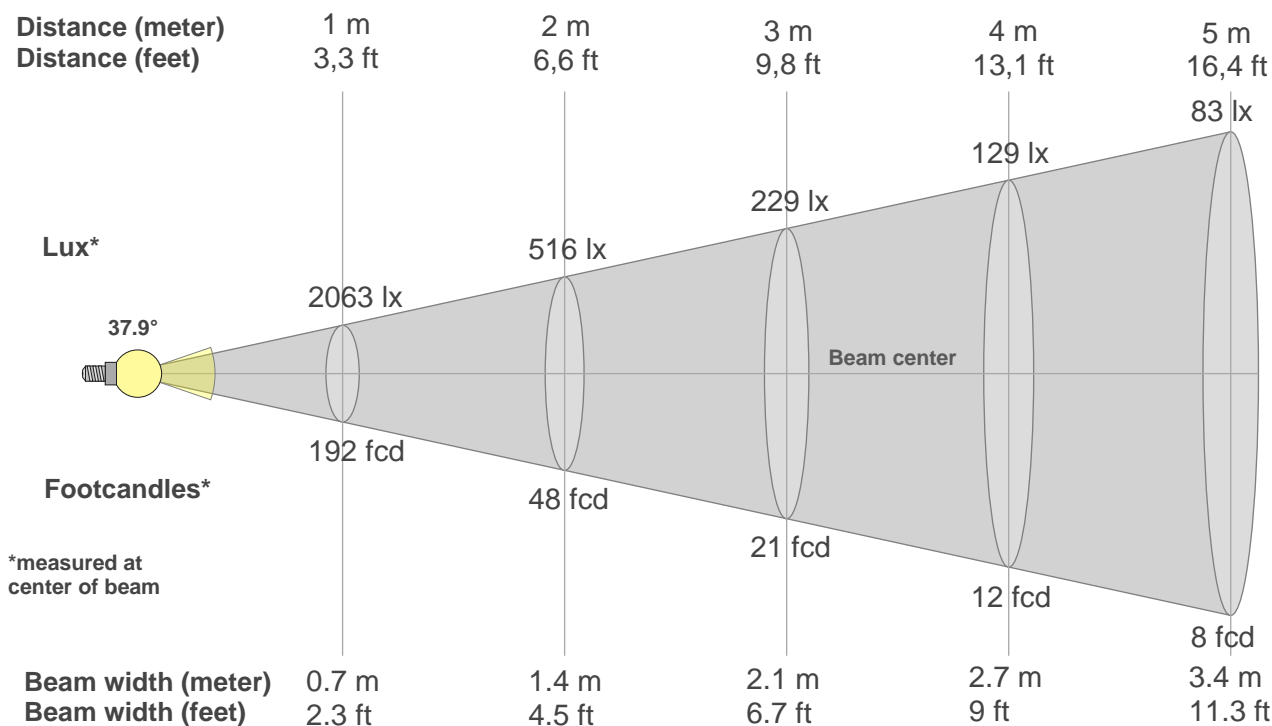
Color vector graphics



Color distortion



Beam details



Beam intensities from 1-20m

1m	2m	3m	4m	5m	6m	7m	8m	9m	10m	11m	12m	13m	14m	15m	16m	17m	18m	19m	20m
3.3ft	6.6ft	9.8ft	13.1ft	16.4ft	19.7ft	23ft	26.2ft	29.5ft	32.8ft	36.1ft	39.4ft	42.7ft	45.9ft	49.2ft	52.5ft	55.8ft	59.1ft	62.3ft	65.6ft
2063lx	516lx	229lx	129lx	83lx	57lx	42lx	32lx	25lx	21lx	17lx	14lx	12lx	11lx	9lx	8lx	7lx	6lx	6lx	5lx
191.6fcd	47.9fcd	21.3fcd	12fcd	7.7fcd	5.3fcd	3.9fcd	3fcd	2.4fcd	1.9fcd	1.6fcd	1.3fcd	1.1fcd	1fcd	0.9fcd	0.7fcd	0.7fcd	0.6fcd	0.5fcd	0.5fcd

Intensities in 0° c-plane

0°	2°	4°	6°	8°	10°	12°	14°	16°	18°	20°	22°	24°	26°	28°	30°	32°	34°	36°	38°
2063	2044	2004	1947	1874	1784	1675	1537	1355	1141	922	734	582	436	286	140	40	14	6	5
100%	99%	97%	94%	91%	87%	81%	75%	66%	55%	45%	36%	28%	21%	14%	7%	2%	1%	0%	0%

Intensities in 90° c-plane

0°	2°	4°	6°	8°	10°	12°	14°	16°	18°	20°	22°	24°	26°	28°	30°	32°	34°	36°	38°
2063	2048	2011	1955	1881	1789	1678	1534	1347	1131	918	735	572	415	262	122	37	13	7	5
100%	99%	98%	95%	91%	87%	81%	74%	65%	55%	45%	36%	28%	20%	13%	6%	2%	1%	0%	0%

Intensities in 180° c-plane

0°	2°	4°	6°	8°	10°	12°	14°	16°	18°	20°	22°	24°	26°	28°	30°	32°	34°	36°	38°
2063	2058	2023	1968	1897	1808	1691	1534	1341	1134	931	742	563	384	218	90	22	10	7	5
100%	100%	98%	95%	92%	88%	82%	74%	65%	55%	45%	36%	27%	19%	11%	4%	1%	0%	0%	0%

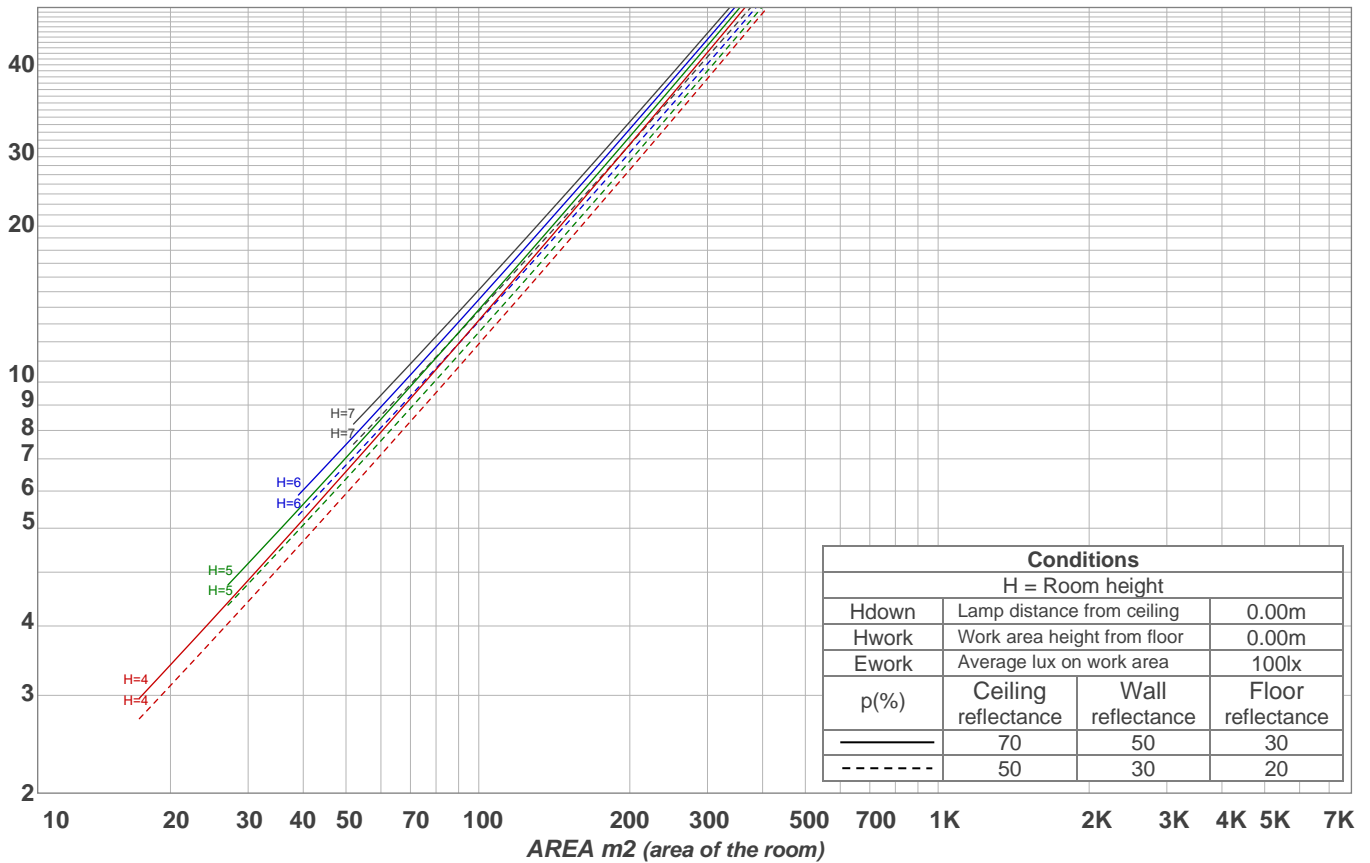
Intensities in 270° c-plane

0°	2°	4°	6°	8°	10°	12°	14°	16°	18°	20°	22°	24°	26°	28°	30°	32°	34°	36°	38°
2063	2056	2019	1962	1887	1796	1684	1526	1334	1129	927	741	570	402	240	108	28	10	6	5
100%	100%	98%	95%	91%	87%	82%	74%	65%	55%	45%	36%	28%	19%	12%	5%	1%	0%	0%	0%

Beam angle 50%	Field angle 10%	Cutoff angle 2,5%	Intensity ratio in 120° cone	Intensity ratio in 90° cone
37.9°	57.2°	62.8°	99.1%	98.7%

LAMPS (number of lamps)
50

Light planning Luminaire budgetary diagram



Luminaire budgetary diagram AREA m2 (area of the room) Coefficients of Utilization

Ceiling reflectance	80				70				50			30			10			0			
Wall reflectance	70	50	30	10	70	50	30	10	50	30	10	50	30	10	50	30	10	50	30	10	0
Floor reflectance	20	20	20	20	20	20	20	20	20	20	20	20	20	20	20	20	20	20	20	20	0
RCR	(RCR: Room Cavity Ratio)																				
	Room Values are expressed as percentage of Lumens delivered to the task surface																				
0	119	119	119	119	116	116	116	116	111	111	111	106	106	106	102	102	102	100	100	100	
1	115	112	110	108	112	110	108	106	106	105	103	102	101	100	99	98	97	96	96	96	
2	110	106	103	100	108	105	102	99	102	99	97	99	97	95	96	94	93	92	92	92	
3	106	101	97	94	104	100	96	93	97	94	92	95	93	91	93	91	89	88	88	88	
4	103	97	92	89	101	96	92	89	94	90	88	92	89	87	90	88	86	84	84	84	
5	99	93	88	85	98	92	87	84	90	86	84	89	85	83	87	84	82	81	81	81	
6	96	89	84	81	94	88	84	81	87	83	80	85	82	80	84	81	79	78	78	78	
7	93	85	81	78	91	85	80	77	84	80	77	83	79	77	82	79	76	75	75	75	
8	90	82	78	74	88	82	77	74	81	77	74	80	76	74	79	76	73	72	72	72	
9	87	79	75	72	86	79	74	72	78	74	71	77	74	71	76	73	71	70	70	70	
10	84	76	72	69	83	76	72	69	75	71	69	75	71	69	74	71	68	67	67	67	

Zonal Lumen Summary

0°-10°	10°-20°	20°-30°	30°-40°	40°-50°	50°-60°	60°-70°	70°-80°	80°-90°
184 lm	386 lm	218 lm	12.3 lm	2.49 lm	2.57 lm	2.37 lm	2.19 lm	2.38 lm
90°-100°	100°-110°	110°-120°	120°-130°	130°-140°	140°-150°	150°-160°	160°-170°	170°-180°
0.000 lm	0.000 lm	0.000 lm	0.000 lm	0.000 lm	0.000 lm	0.000 lm	0.000 lm	0.000 lm