

Light efficiency:

55 Lumen/Watt

Output: 810 lm

Light quality:

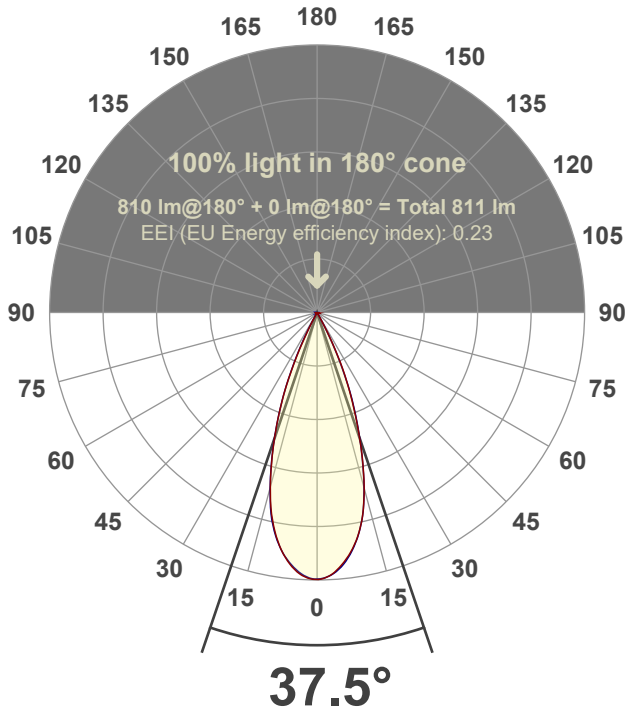
CRI: 96.2

Peak: 2179 cd

Power: 14.6 W



Beam angle



Test number:

GR-F-A14-3019-FL-SQ-Rev2

Luminaire Model:

Graffiti Regress Square Fixed Downlight-A14-3019 38° Optic

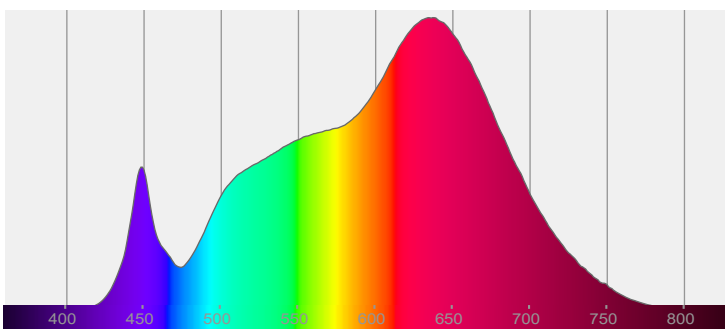
Date and time:

6/30/2022 11:51:02 AM

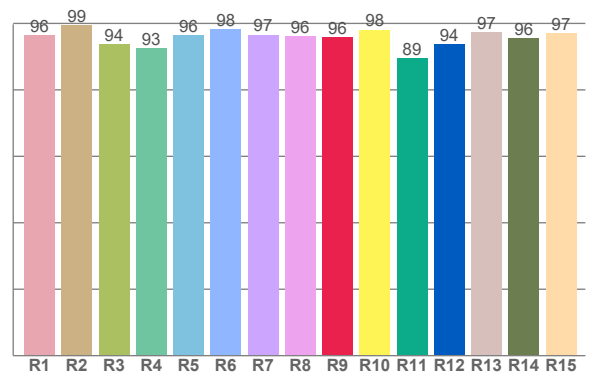
Delivered Lumens

810

Spectra



CRI: 96.2 (R1-R8)



Color parameters

	Color rendering index	Red component	Color fidelity	Color gamut	Color quality scale	Color coordinate cie 1931	Color coordinate cie 1931	Color coordinate	Color coordinate	Color deviation from black body
	CRI	CRI R9	TM30 R _f	TM30 R _g	CQS	x	y	u	v	Δuv
	96.2	95.8	95.3	104.3	94.9	0.435	0.402	0.250	0.347	-0.0007

R_f 95.3

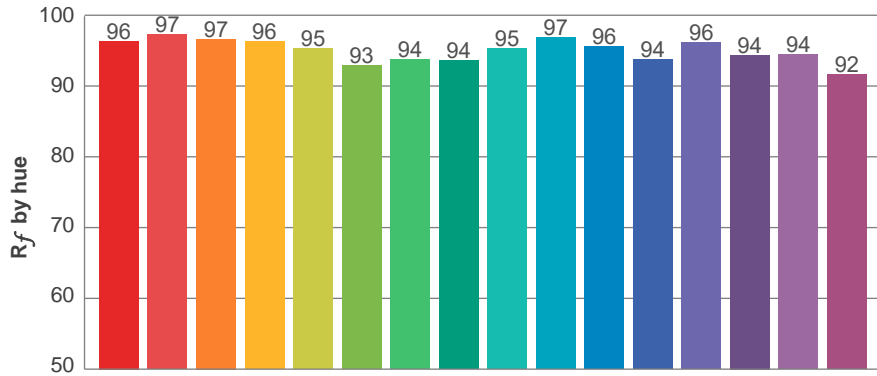
Fidelity index R_f

R_g 104.3

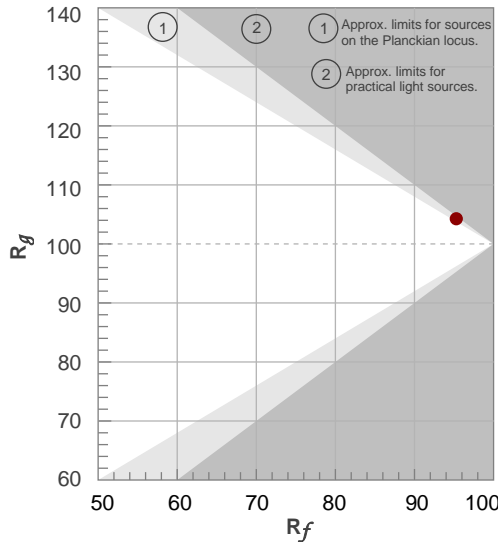
Gammut index R_g

TM30: 95.3

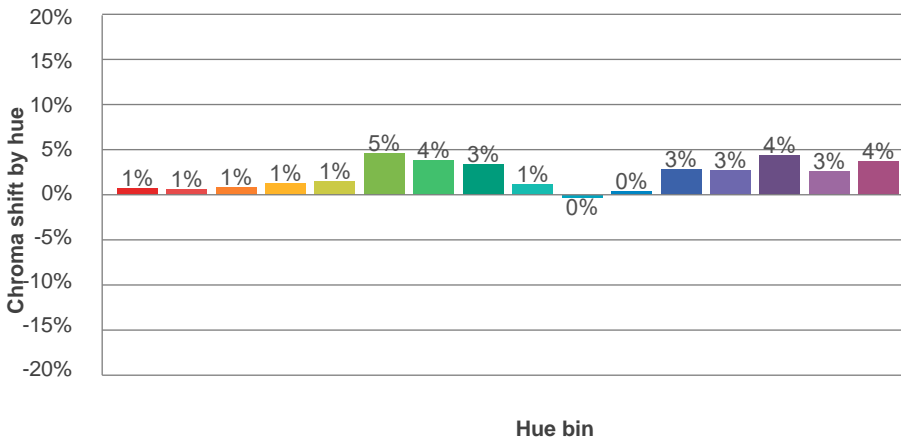
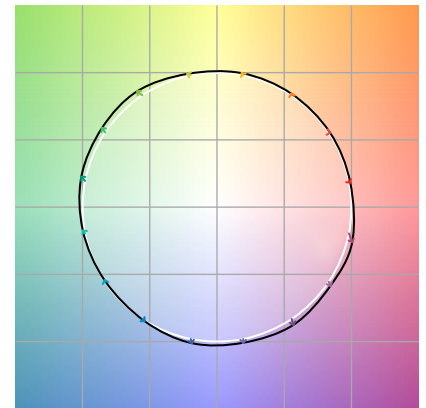
TM-30Color



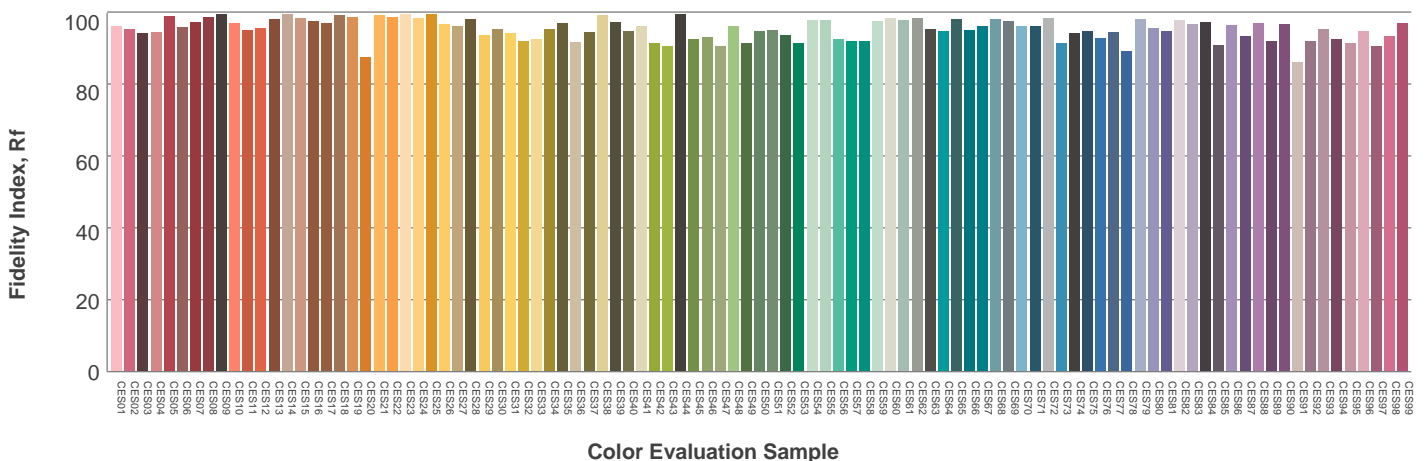
Hue Bin	R_f	Graphic shifts (%)	
		Chroma	Hue
1	96	1%	-2%
2	97	1%	-1%
3	97	1%	1%
4	96	1%	1%
5	95	1%	2%
6	93	5%	1%
7	94	4%	-1%
8	94	3%	-2%
9	95	1%	-2%
10	97	0%	-1%
11	96	0%	2%
12	94	3%	1%
13	96	3%	-1%
14	94	4%	-1%
15	94	3%	-2%
16	92	4%	-6%



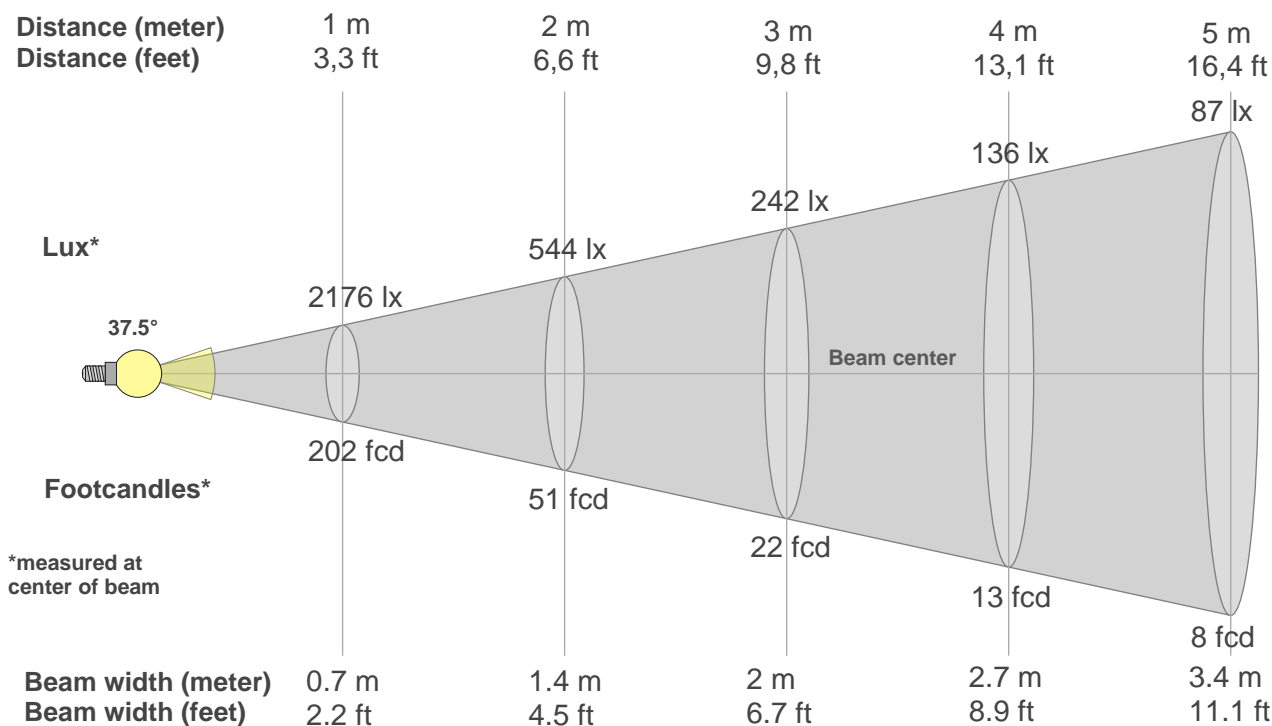
Color vector graphics



Color distortion



Beam details



Beam intensities from 1-20m

1m	2m	3m	4m	5m	6m	7m	8m	9m	10m	11m	12m	13m	14m	15m	16m	17m	18m	19m	20m
3.3ft	6.6ft	9.8ft	13.1ft	16.4ft	19.7ft	23ft	26.2ft	29.5ft	32.8ft	36.1ft	39.4ft	42.7ft	45.9ft	49.2ft	52.5ft	55.8ft	59.1ft	62.3ft	65.6ft
2176lx	544lx	242lx	136lx	87lx	60lx	44lx	34lx	27lx	22lx	18lx	15lx	13lx	11lx	10lx	9lx	8lx	7lx	6lx	5lx
202.2fcd	50.5fcd	22.5fcd	12.6fcd	8.1fcd	5.6fcd	4.1fcd	3.2fcd	2.5fcd	2fcd	1.7fcd	1.4fcd	1.2fcd	1fcd	0.9fcd	0.8fcd	0.7fcd	0.6fcd	0.6fcd	0.5fcd

Intensities in 0° c-plane

0°	2°	4°	6°	8°	10°	12°	14°	16°	18°	20°	22°	24°	26°	28°	30°	32°	34°	36°	38°
2176	2162	2120	2056	1977	1875	1746	1581	1386	1172	952	747	560	366	190	67	16	10	8	7
100%	99%	97%	94%	91%	86%	80%	73%	64%	54%	44%	34%	26%	17%	9%	3%	1%	0%	0%	0%

Intensities in 90° c-plane

0°	2°	4°	6°	8°	10°	12°	14°	16°	18°	20°	22°	24°	26°	28°	30°	32°	34°	36°	38°
2176	2162	2127	2069	1984	1877	1744	1578	1380	1168	961	761	547	343	170	47	18	10	7	6
100%	99%	98%	95%	91%	86%	80%	72%	63%	54%	44%	35%	25%	16%	8%	2%	1%	0%	0%	0%

Intensities in 180° c-plane

0°	2°	4°	6°	8°	10°	12°	14°	16°	18°	20°	22°	24°	26°	28°	30°	32°	34°	36°	38°
2176	2169	2136	2074	1989	1878	1742	1576	1379	1168	957	746	525	312	139	38	18	11	8	7
100%	100%	98%	95%	91%	86%	80%	72%	63%	54%	44%	34%	24%	14%	6%	2%	1%	1%	0%	0%

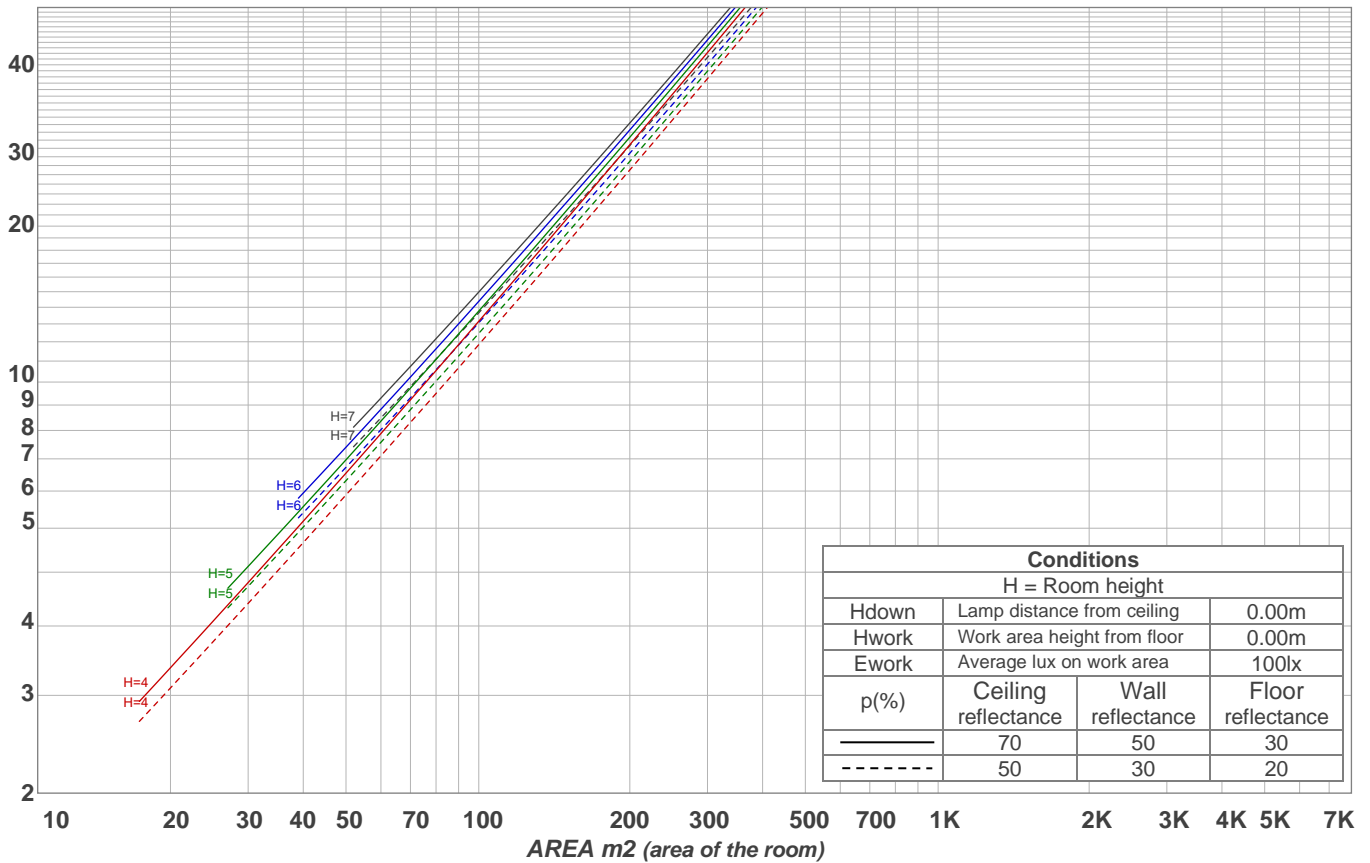
Intensities in 270° c-plane

0°	2°	4°	6°	8°	10°	12°	14°	16°	18°	20°	22°	24°	26°	28°	30°	32°	34°	36°	38°
2176	2162	2125	2066	1989	1885	1753	1583	1383	1171	956	746	532	336	168	48	16	10	8	6
100%	99%	98%	95%	91%	87%	81%	73%	64%	54%	44%	34%	24%	15%	8%	2%	1%	0%	0%	0%

Beam angle 50%	Field angle 10%	Cutoff angle 2,5%	Intensity ratio in 120° cone	Intensity ratio in 90° cone
37.5°	54.6°	59.7°	99.1%	98.6%

LAMPS (number of lamps)
50

Light planning Luminaire budgetary diagram



Luminaire budgetary diagram AREA m2 (area of the room) Coefficients of Utilization

Ceiling reflectance	80				70				50			30			10			0			
Wall reflectance	70	50	30	10	70	50	30	10	50	30	10	50	30	10	50	30	10	50	30	10	0
Floor reflectance	20	20	20	20	20	20	20	20	20	20	20	20	20	20	20	20	20	20	20	20	0
RCR	(RCR: Room Cavity Ratio)																				
	Room Values are expressed as percentage of Lumens delivered to the task surface																				
0	119	119	119	119	116	116	116	116	111	111	111	106	106	106	102	102	102	100	100	100	
1	115	112	110	108	112	110	108	107	106	105	103	102	101	100	99	98	97	96	96	96	
2	110	107	103	101	108	105	102	99	102	99	97	99	97	95	96	95	93	92	92	92	
3	107	102	98	95	105	100	97	94	98	95	92	95	93	91	93	91	90	88	88	88	
4	103	97	93	90	101	96	92	89	94	91	88	92	89	87	90	88	86	85	85	85	
5	99	93	89	85	98	92	88	85	91	87	84	89	86	84	88	85	83	82	82	82	
6	96	89	85	82	95	89	84	81	87	84	81	86	83	80	85	82	80	79	79	79	
7	93	86	82	78	92	86	81	78	84	81	78	83	80	77	82	79	77	76	76	76	
8	90	83	79	75	89	83	78	75	82	78	75	81	77	75	80	77	74	73	73	73	
9	87	80	76	73	86	80	75	73	79	75	72	78	75	72	77	74	72	71	71	71	
10	85	77	73	70	84	77	73	70	76	73	70	76	72	70	75	72	70	69	69	69	

Zonal Lumen Summary

0°-10°	10°-20°	20°-30°	30°-40°	40°-50°	50°-60°	60°-70°	70°-80°	80°-90°
193 lm	399 lm	197 lm	7.98 lm	2.84 lm	2.35 lm	2.36 lm	2.30 lm	2.58 lm
90°-100°	100°-110°	110°-120°	120°-130°	130°-140°	140°-150°	150°-160°	160°-170°	170°-180°
0.000 lm	0.000 lm	0.000 lm	0.000 lm	0.000 lm	0.000 lm	0.000 lm	0.000 lm	0.000 lm