

Light efficiency:



Output: 764 lm

Light quality:

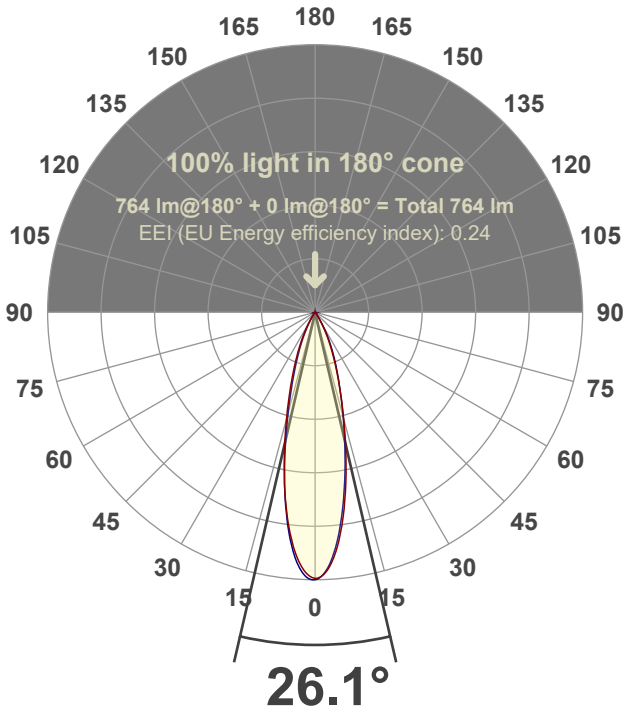


Peak: 2771 cd

Power: 14.7 W



Beam angle



Test number:

GR-F-A14-3019-NF-RD-91A-Rev2

Luminaire Model:

Graffiti Regress Round Fixed Downlight-A14-3019 24° Optic-Solite

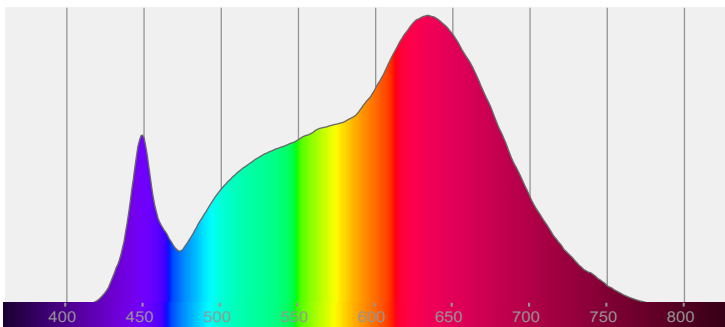
Date and time:

3/24/2022 9:35:24 PM

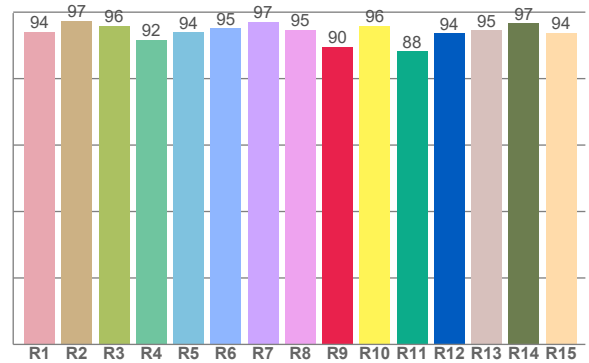
Delivered Lumens

764

Spectra



CRI: 95.0 (R1-R8)



Color parameters

Color rendering index	Red component	Color fidelity	Color gamut	Color quality scale	Color coordinate cie 1931	Color coordinate cie 1931	Color coordinate	Color coordinate	Color divition from black body
CRI	CRI R9	TM30 R _f	TM30 R _g	CQS	x	y	u	v	Δuv
95.0	89.6	94.8	105.5	95.0	0.423	0.388	0.249	0.342	-0.0045

R_f 94.8

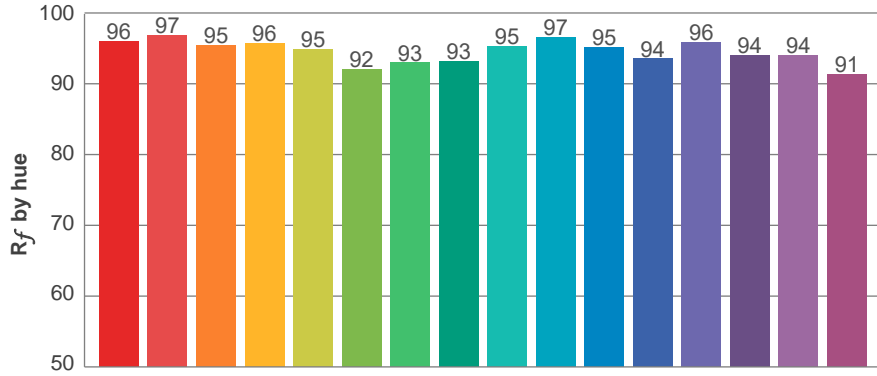
Fidelity index R_f

R_g 105.5

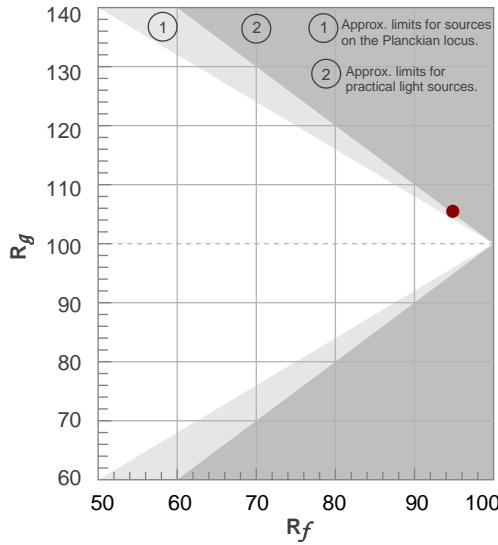
Gammut index R_g

TM30: 94.8

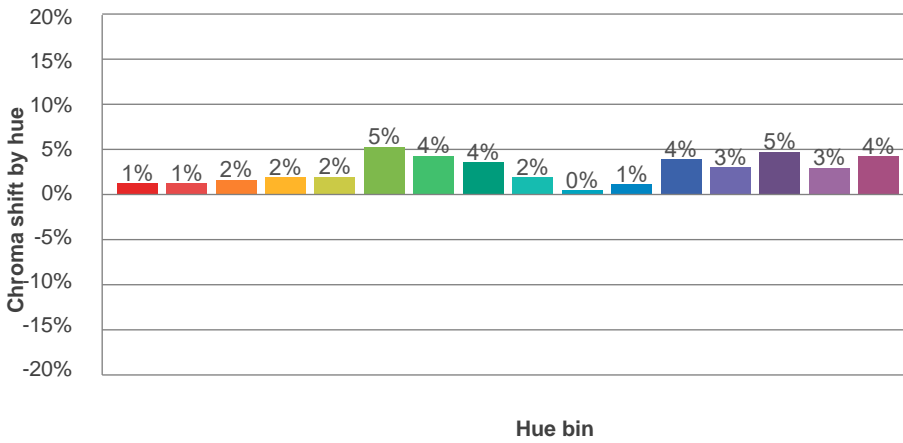
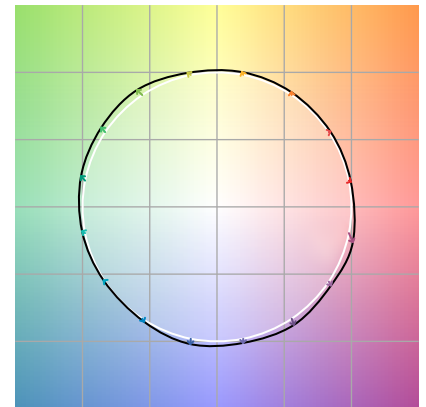
TM-30Color



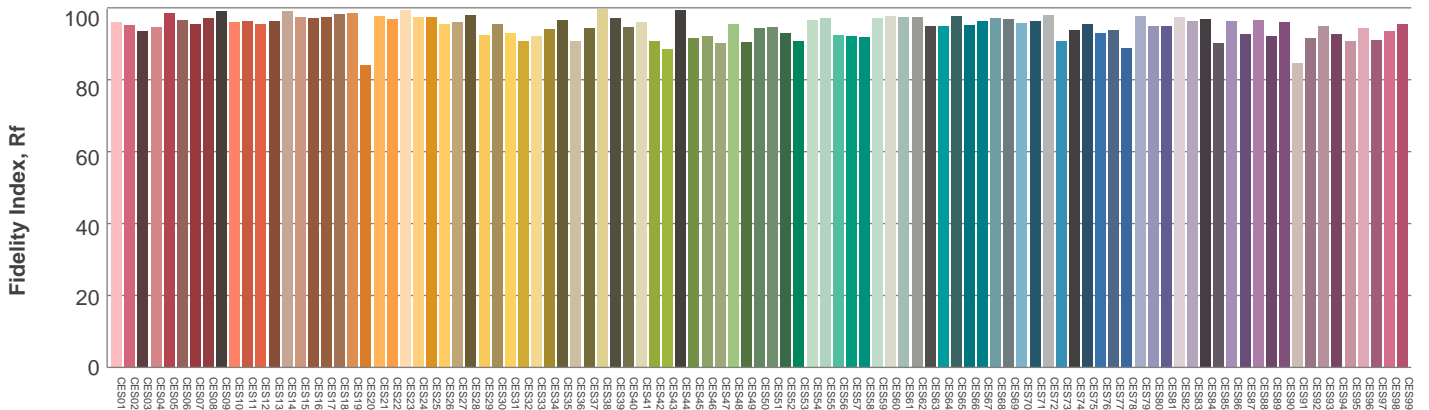
Hue Bin	R_f	Graphic shifts (%)	
		Chroma	Hue
1	96	1%	-1%
2	97	1%	0%
3	95	2%	1%
4	96	2%	1%
5	95	2%	2%
6	92	5%	1%
7	93	4%	-1%
8	93	4%	-3%
9	95	2%	-2%
10	97	0%	-1%
11	95	1%	2%
12	94	4%	0%
13	96	3%	-1%
14	94	5%	-1%
15	94	3%	-1%
16	91	4%	-6%



Color vector graphics

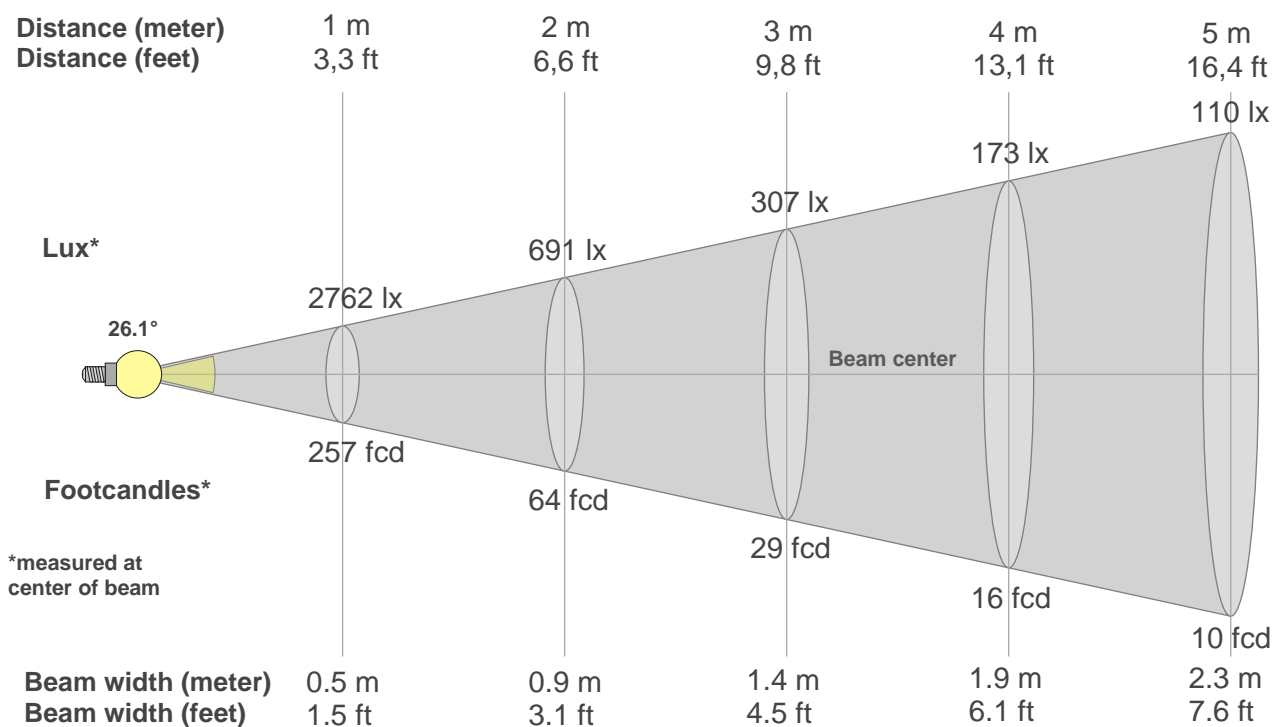


Color distortion



Color Evaluation Sample

Beam details



Beam intensities from 1-20m

1m	2m	3m	4m	5m	6m	7m	8m	9m	10m	11m	12m	13m	14m	15m	16m	17m	18m	19m	20m
3.3ft	6.6ft	9.8ft	13.1ft	16.4ft	19.7ft	23ft	26.2ft	29.5ft	32.8ft	36.1ft	39.4ft	42.7ft	45.9ft	49.2ft	52.5ft	55.8ft	59.1ft	62.3ft	65.6ft
2762lx	691lx	307lx	173lx	110lx	77lx	56lx	43lx	34lx	28lx	23lx	19lx	16lx	14lx	12lx	11lx	10lx	9lx	8lx	7lx
256.6fcd	64.2fcd	28.5fcd	16fcd	10.3fcd	7.1fcd	5.2fcd	4fcd	3.2fcd	2.6fcd	2.1fcd	1.8fcd	1.5fcd	1.3fcd	1.1fcd	1fcd	0.9fcd	0.8fcd	0.7fcd	0.6fcd

Intensities in 0° c-plane

0°	2°	4°	6°	8°	10°	12°	14°	16°	18°	20°	22°	24°	26°	28°	30°	32°	34°	36°	38°
2762	2707	2575	2375	2121	1835	1551	1285	1045	839	673	536	419	321	237	166	115	80	55	39
100%	98%	93%	86%	77%	66%	56%	47%	38%	30%	24%	19%	15%	12%	9%	6%	4%	3%	2%	1%

Intensities in 90° c-plane

0°	2°	4°	6°	8°	10°	12°	14°	16°	18°	20°	22°	24°	26°	28°	30°	32°	34°	36°	38°
2762	2698	2547	2327	2060	1777	1504	1252	1029	837	691	564	452	351	262	186	126	83	53	34
100%	98%	92%	84%	75%	64%	54%	45%	37%	30%	25%	20%	16%	13%	9%	7%	5%	3%	2%	1%

Intensities in 180° c-plane

0°	2°	4°	6°	8°	10°	12°	14°	16°	18°	20°	22°	24°	26°	28°	30°	32°	34°	36°	38°
2762	2706	2563	2359	2110	1833	1546	1282	1047	845	676	537	423	325	241	171	116	80	55	39
100%	98%	93%	85%	76%	66%	56%	46%	38%	31%	24%	19%	15%	12%	9%	6%	4%	3%	2%	1%

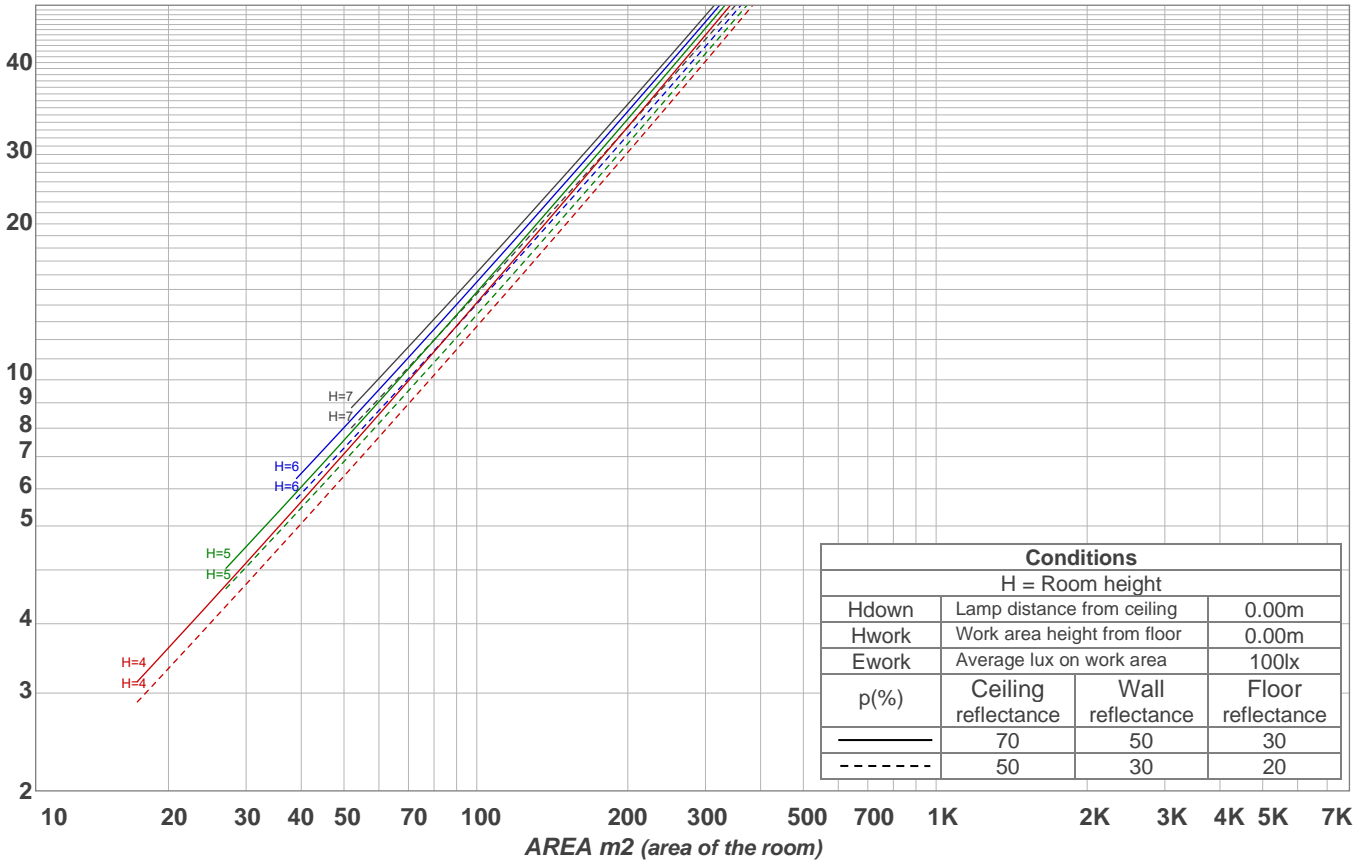
Intensities in 270° c-plane

0°	2°	4°	6°	8°	10°	12°	14°	16°	18°	20°	22°	24°	26°	28°	30°	32°	34°	36°	38°
2762	2747	2613	2398	2129	1828	1514	1223	978	773	606	471	362	270	192	131	87	58	41	30
100%	99%	95%	87%	77%	66%	55%	44%	35%	28%	22%	17%	13%	10%	7%	5%	3%	2%	1%	1%

Beam angle 50%	Field angle 10%	Cutoff angle 2,5%	Intensity ratio in 120° cone	Intensity ratio in 90° cone
26.1°	53.8°	68.7°	98.9%	97.7%

LAMPS (number of lamps)
50

Light planning Luminaire budgetary diagram



Luminaire budgetary diagram AREA m2 (area of the room) Coefficients of Utilization

Ceiling reflectance	80				70				50			30			10			0
Wall reflectance	70	50	30	10	70	50	30	10	50	30	10	50	30	10	50	30	10	0
Floor reflectance	20	20	20	20	20	20	20	20	20	20	20	20	20	20	20	20	20	0
RCR	(RCR: Room Cavity Ratio) Room Values are expressed as percentage of Lumens delivered to the task surface																	
0	119	119	119	119	116	116	116	116	111	111	111	106	106	106	102	102	102	100
1	114	112	110	108	112	110	108	106	106	104	103	102	101	100	99	98	97	95
2	110	106	103	100	108	105	102	99	101	99	97	98	97	95	96	94	93	91
3	106	101	97	94	104	100	96	93	97	94	92	95	92	90	93	91	89	88
4	102	96	92	89	101	95	91	88	93	90	87	91	89	86	90	87	85	84
5	99	92	88	84	97	91	87	84	90	86	83	88	85	83	87	84	82	81
6	96	89	84	81	94	88	84	80	87	83	80	85	82	79	84	81	79	78
7	92	85	81	77	91	85	80	77	83	80	77	82	79	76	81	78	76	75
8	89	82	78	74	88	82	77	74	81	77	74	80	76	74	79	76	73	72
9	87	79	75	72	86	79	75	72	78	74	71	77	74	71	76	73	71	70
10	84	77	72	69	83	76	72	69	76	72	69	75	71	69	74	71	69	68

Zonal Lumen Summary

0°-10°	10°-20°	20°-30°	30°-40°	40°-50°	50°-60°	60°-70°	70°-80°	80°-90°
215 lm	314 lm	168 lm	43.6 lm	10.6 lm	5.31 lm	3.49 lm	2.21 lm	2.46 lm

90°-100°	100°-110°	110°-120°	120°-130°	130°-140°	140°-150°	150°-160°	160°-170°	170°-180°
0.000 lm	0.000 lm	0.000 lm	0.000 lm	0.000 lm	0.000 lm	0.000 lm	0.000 lm	0.000 lm

www.graffitilighting.com As a result of our continuous improvement, values are subject to change without notice. These are delivered results and can vary +/- 10% from published source data range.