

Light efficiency:



Output: 791 lm

Light quality:

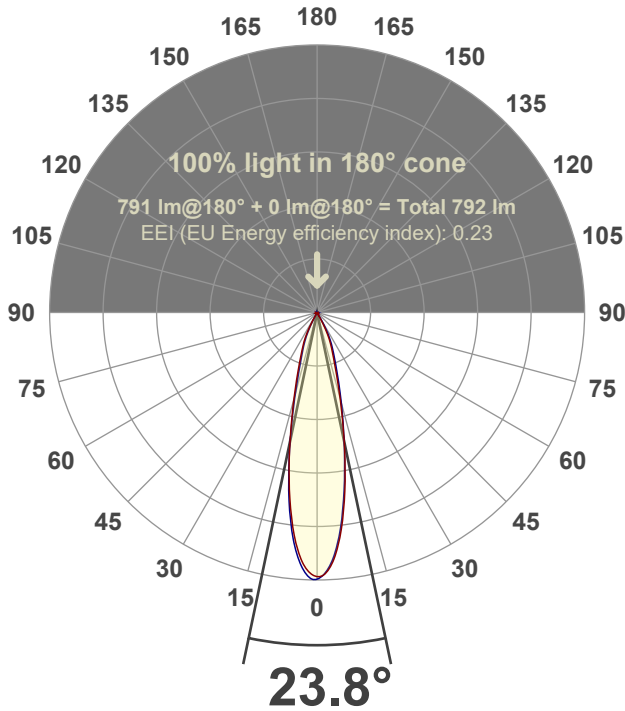


Peak: 3556 cd

Power: 14.7 W



Beam angle



Test number:

GR-F-A14-3019-NF-RD-Rev2

Luminaire Model:

Graffiti Regress Round Fixed Downlight-A14-3019 24° Optic

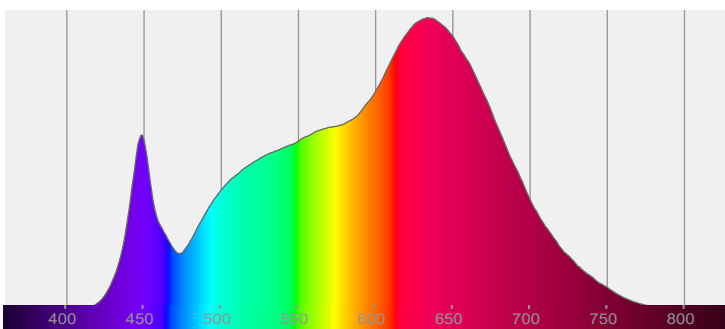
Date and time:

3/24/2022 9:31:22 PM

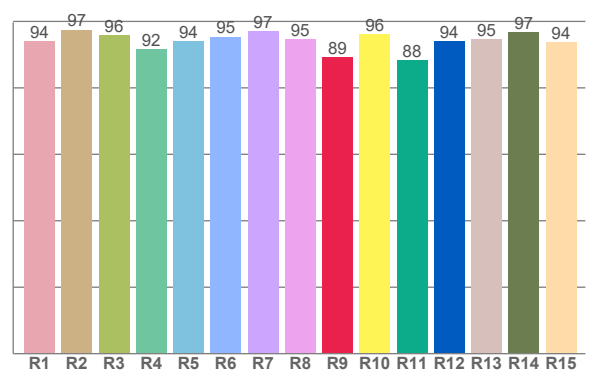
Delivered Lumens

791

Spectra



CRI: 95.0 (R1-R8)



Color parameters

	Color rendering index	Red component	Color fidelity	Color gamut	Color quality scale	Color coordinate cie 1931	Color coordinate cie 1931	Color coordinate	Color coordinate	Color deviation from black body
	CRI	CRI R9	TM30 R _f	TM30 R _g	CQS	x	y	u	v	Δuv
	95.0	89.3	94.8	105.5	95.0	0.423	0.388	0.248	0.342	-0.0044

R_f 94.8

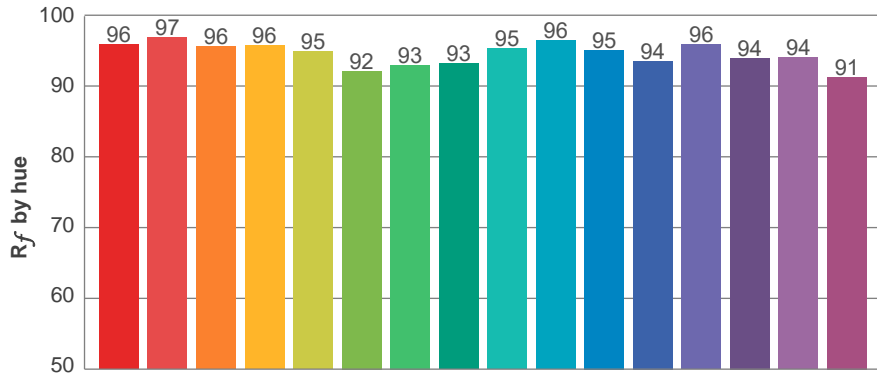
Fidelity index R_f

R_g 105.5

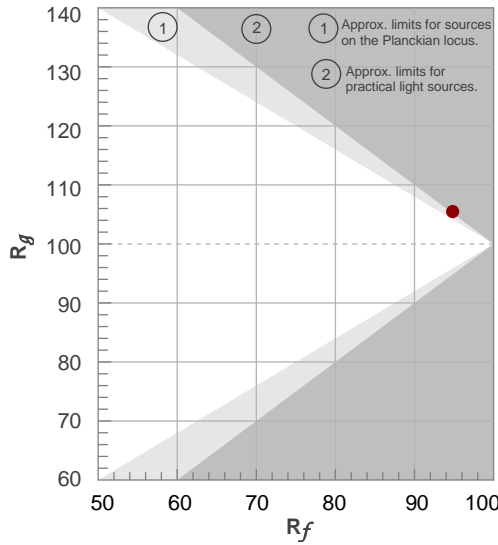
Gammut index R_g

TM30: 94.8

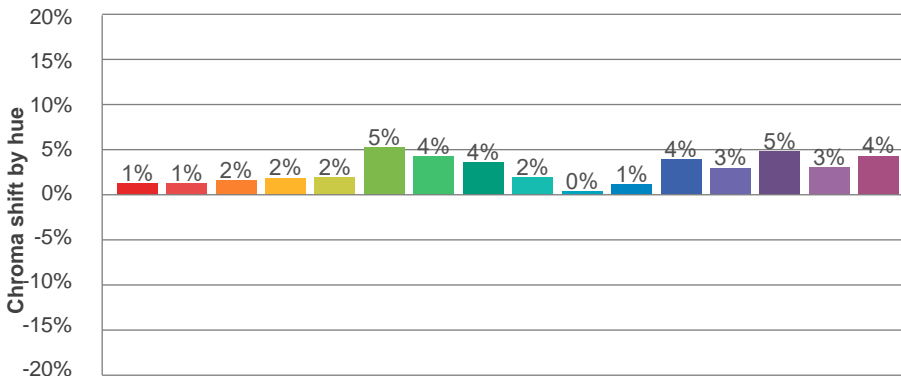
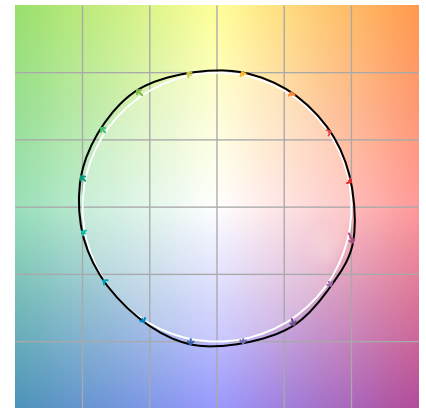
TM-30Color



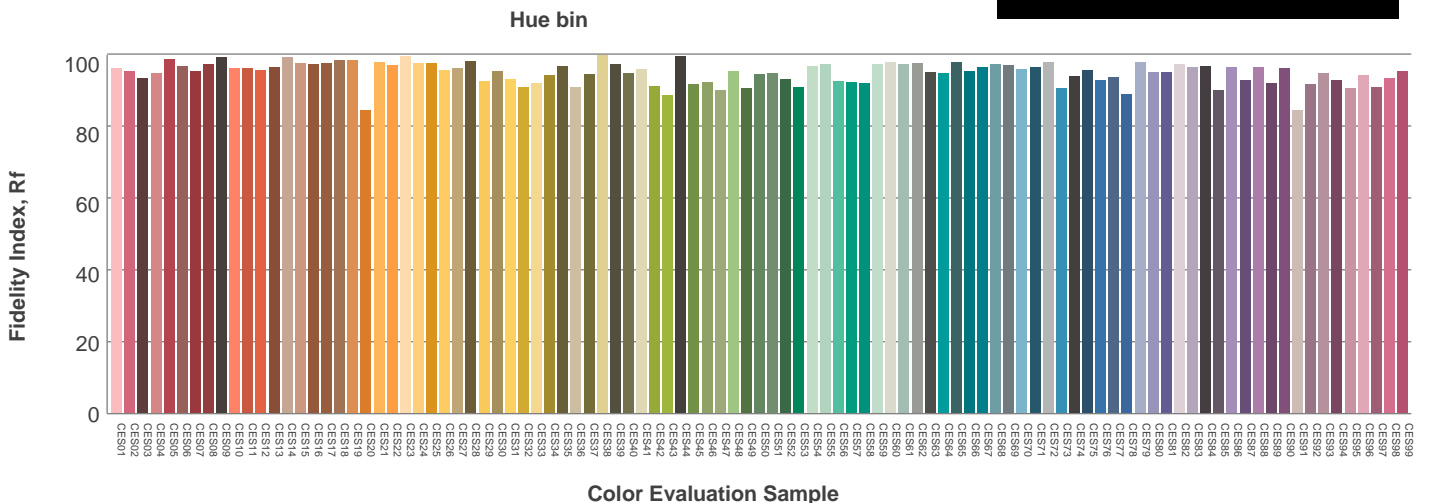
Hue Bin	R_f	Graphic shifts (%)	
		Chroma	Hue
1	96	1%	-1%
2	97	1%	0%
3	96	2%	1%
4	96	2%	1%
5	95	2%	2%
6	92	5%	1%
7	93	4%	-1%
8	93	4%	-3%
9	95	2%	-2%
10	96	0%	-1%
11	95	1%	2%
12	94	4%	1%
13	96	3%	-1%
14	94	5%	-1%
15	94	3%	-1%
16	91	4%	-6%



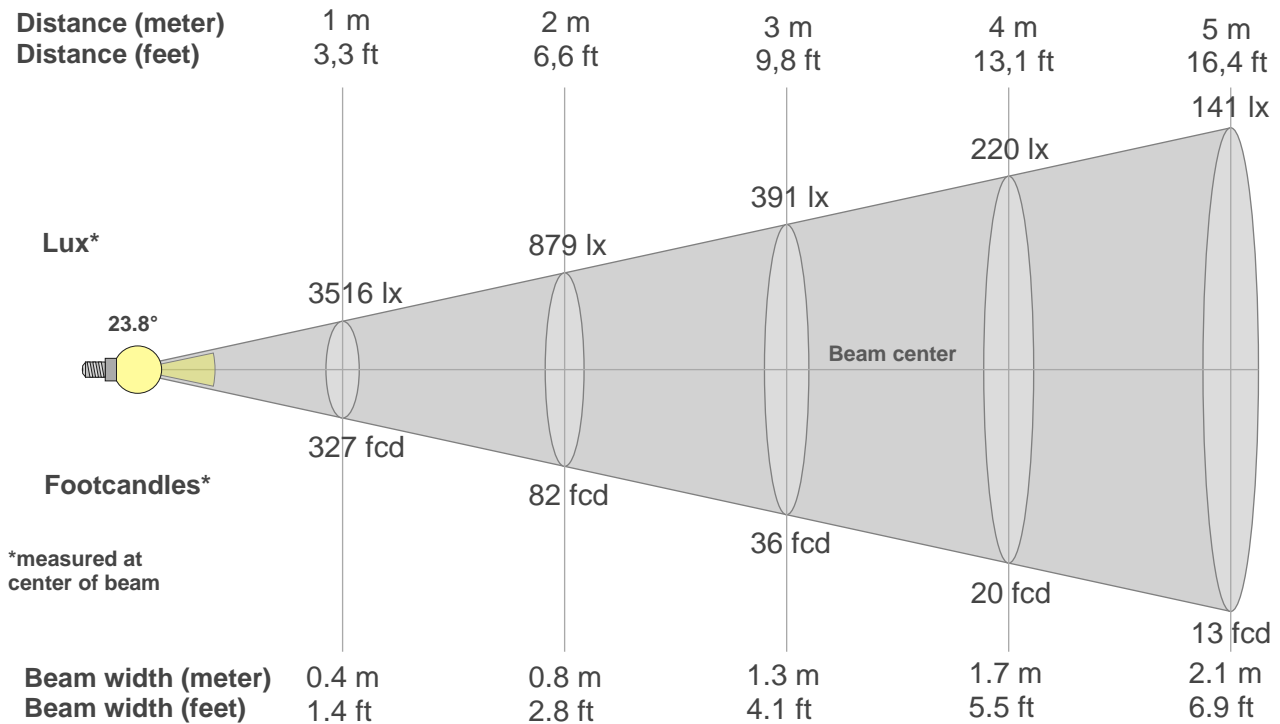
Color vector graphics



Color distortion



Beam details



Beam intensities from 1-20m

1m	2m	3m	4m	5m	6m	7m	8m	9m	10m	11m	12m	13m	14m	15m	16m	17m	18m	19m	20m
3.3ft	6.6ft	9.8ft	13.1ft	16.4ft	19.7ft	23ft	26.2ft	29.5ft	32.8ft	36.1ft	39.4ft	42.7ft	45.9ft	49.2ft	52.5ft	55.8ft	59.1ft	62.3ft	65.6ft
3516lx	879lx	391lx	220lx	141lx	98lx	72lx	55lx	43lx	35lx	29lx	24lx	21lx	18lx	16lx	14lx	12lx	11lx	10lx	9lx
326.6fcd	81.7fcd	36.3fcd	20.4fcd	13.1fcd	9.1fcd	6.7fcd	5.1fcd	4fcd	3.3fcd	2.7fcd	2.3fcd	1.9fcd	1.7fcd	1.5fcd	1.3fcd	1.1fcd	1fcd	0.9fcd	0.8fcd

Intensities in 0° c-plane

0°	2°	4°	6°	8°	10°	12°	14°	16°	18°	20°	22°	24°	26°	28°	30°	32°	34°	36°	38°
3516	3456	3284	2969	2582	2162	1746	1364	1052	820	652	528	424	318	193	89	29	10	9	7
100%	98%	93%	84%	73%	61%	50%	39%	30%	23%	19%	15%	12%	9%	5%	3%	1%	0%	0%	0%

Intensities in 90° c-plane

0°	2°	4°	6°	8°	10°	12°	14°	16°	18°	20°	22°	24°	26°	28°	30°	32°	34°	36°	38°
3516	3441	3243	2925	2529	2123	1741	1405	1121	899	727	596	489	390	274	153	63	17	8	5
100%	98%	92%	83%	72%	60%	50%	40%	32%	26%	21%	17%	14%	11%	8%	4%	2%	0%	0%	0%

Intensities in 180° c-plane

0°	2°	4°	6°	8°	10°	12°	14°	16°	18°	20°	22°	24°	26°	28°	30°	32°	34°	36°	38°
3516	3430	3250	2963	2576	2160	1746	1371	1066	833	667	541	438	337	212	99	35	11	8	6
100%	98%	92%	84%	73%	61%	50%	39%	30%	24%	19%	15%	12%	10%	6%	3%	1%	0%	0%	0%

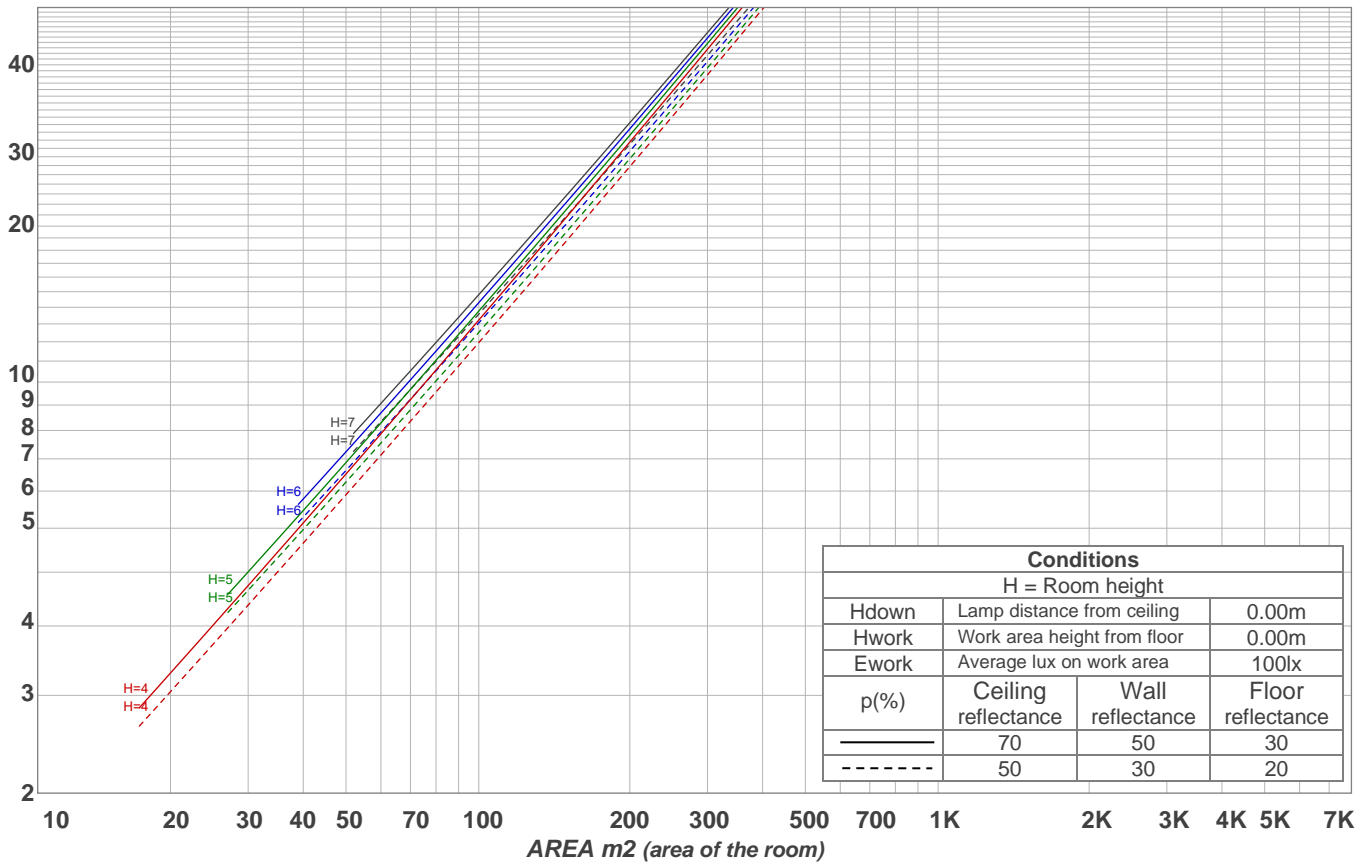
Intensities in 270° c-plane

0°	2°	4°	6°	8°	10°	12°	14°	16°	18°	20°	22°	24°	26°	28°	30°	32°	34°	36°	38°
3516	3495	3326	3042	2639	2186	1732	1318	978	749	597	480	373	259	136	51	17	9	7	7
100%	99%	95%	87%	75%	62%	49%	37%	28%	21%	17%	14%	11%	7%	4%	1%	0%	0%	0%	0%

Beam angle 50%	Field angle 10%	Cutoff angle 2,5%	Intensity ratio in 120° cone	Intensity ratio in 90° cone
23.8°	51.1°	60.3°	99.2%	98.8%

LAMPS (number of lamps)
50

Light planning Luminaire budgetary diagram



Luminaire budgetary diagram AREA m2 (area of the room) Coefficients of Utilization

Ceiling reflectance	80				70				50			30			10			0			
Wall reflectance	70	50	30	10	70	50	30	10	50	30	10	50	30	10	50	30	10	50	30	10	0
Floor reflectance	20	20	20	20	20	20	20	20	20	20	20	20	20	20	20	20	20	20	20	20	0
RCR	(RCR: Room Cavity Ratio) Room Values are expressed as percentage of Lumens delivered to the task surface																				
0	119	119	119	119	116	116	116	116	111	111	111	106	106	106	102	102	102	100	100	100	
1	115	113	111	109	112	110	109	107	107	105	104	103	102	101	99	99	98	96	96	96	
2	111	107	104	102	109	106	103	100	102	100	98	100	98	96	97	96	94	93	93	93	
3	107	103	99	96	106	101	98	95	99	96	94	97	94	92	94	93	91	90	90	90	
4	104	99	95	91	102	97	94	91	95	92	90	94	91	89	92	90	88	87	87	87	
5	101	95	91	88	99	94	90	87	92	89	87	91	88	86	90	87	85	84	84	84	
6	98	92	87	84	97	91	87	84	90	86	83	88	85	83	87	85	82	81	81	81	
7	95	89	84	81	94	88	84	81	87	83	81	86	83	80	85	82	80	79	79	79	
8	92	86	82	79	91	85	81	79	84	81	78	83	80	78	83	80	78	77	77	77	
9	90	83	79	76	89	83	79	76	82	78	76	81	78	76	81	78	76	75	75	75	
10	88	81	77	74	87	80	77	74	80	76	74	79	76	74	79	76	74	73	73	73	

Zonal Lumen Summary

0°-10°	10°-20°	20°-30°	30°-40°	40°-50°	50°-60°	60°-70°	70°-80°	80°-90°
268 lm	336 lm	165 lm	11.2 lm	2.31 lm	2.32 lm	2.00 lm	2.07 lm	2.26 lm
90°-100°	100°-110°	110°-120°	120°-130°	130°-140°	140°-150°	150°-160°	160°-170°	170°-180°
0.000 lm	0.000 lm	0.000 lm	0.000 lm	0.000 lm	0.000 lm	0.000 lm	0.000 lm	0.000 lm