

Light efficiency:



Output: 804 lm

Light quality:

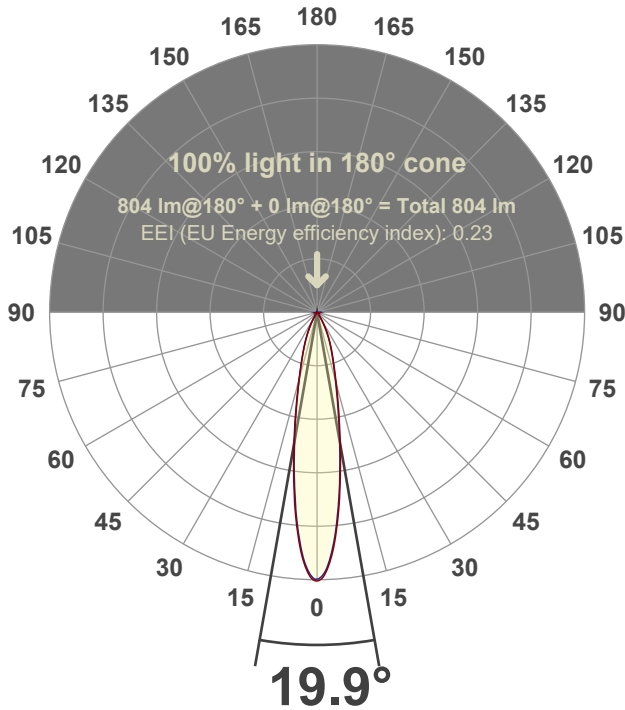


Peak: 3995 cd

Power: 14.6 W



Beam angle



Test number:

GR-F-A14-3019-SP-RD-91A-Rev2

Luminaire Model:

Graffiti Regress Round Fixed Downlight-A14-3019 15° Optic-Solite

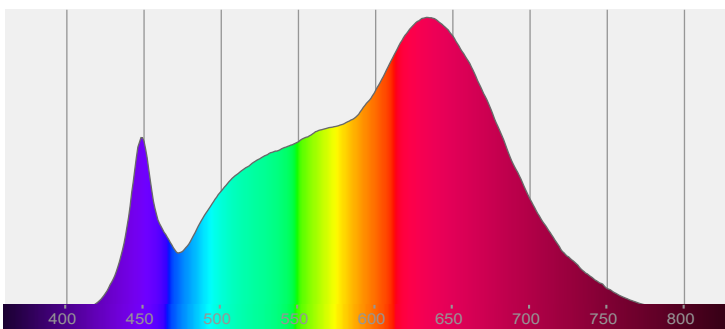
Date and time:

3/24/2022 7:57:04 PM

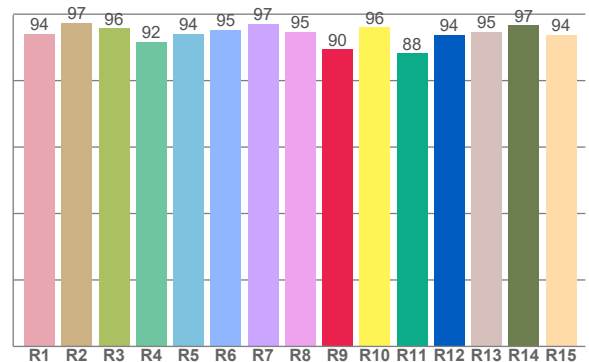
Delivered Lumens

804

Spectra



CRI: 95.0 (R1-R8)



Color parameters

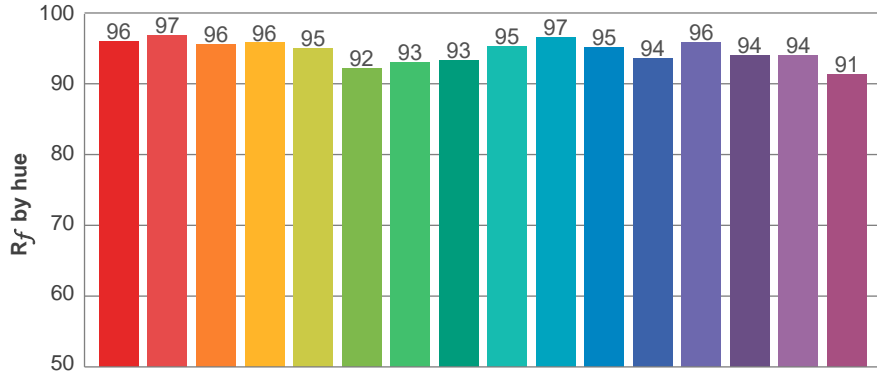
Color rendering index	Red component	Color fidelity	Color gamut	Color quality scale	Color coordinate cie 1931	Color coordinate cie 1931	Color coordinate	Color coordinate	Color diviation from black body
CRI	CRI R9	TM30 R _f	TM30 R _g	CQS	x	y	u	v	Δuv
95.0	89.5	94.9	105.4	95.0	0.423	0.389	0.248	0.342	-0.0044

R_f 94.9
Fidelity index R_f

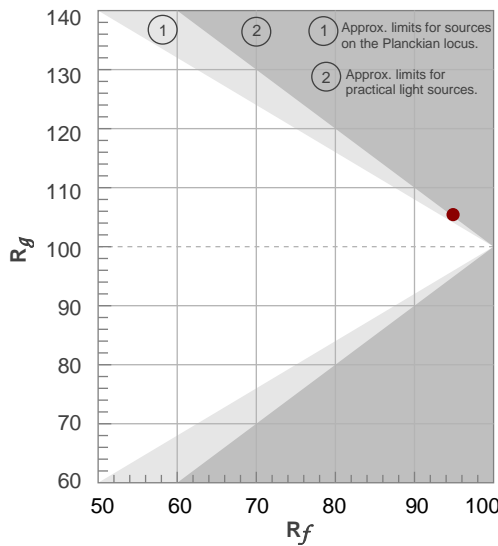
R_g 105.4
Gammut index R_g

TM30: 94.9

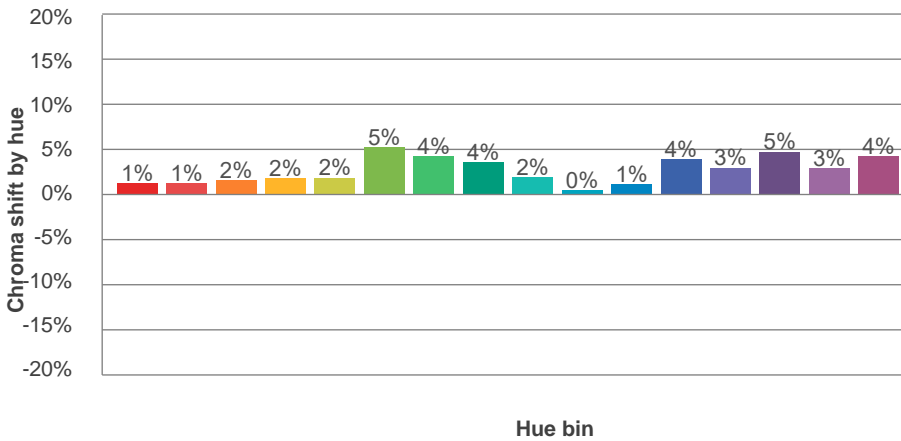
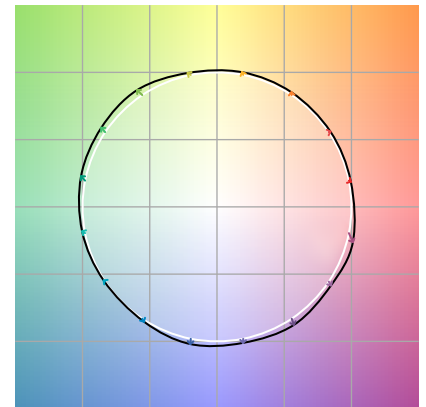
TM-30Color



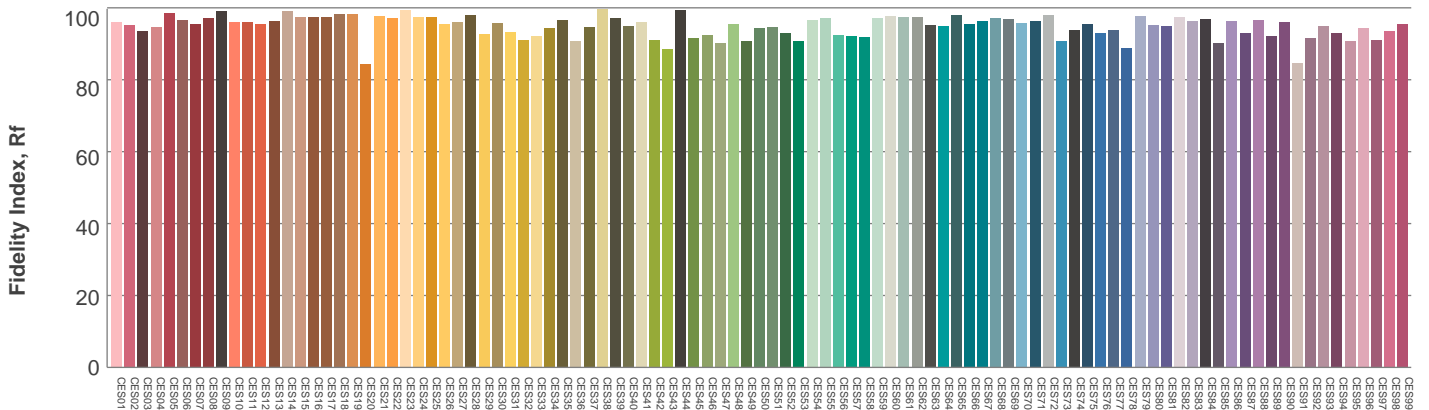
Hue Bin	R_f	Graphic shifts (%)	
		Chroma	Hue
1	96	1%	-1%
2	97	1%	0%
3	96	2%	1%
4	96	2%	1%
5	95	2%	2%
6	92	5%	1%
7	93	4%	-1%
8	93	4%	-3%
9	95	2%	-2%
10	97	0%	-1%
11	95	1%	2%
12	94	4%	0%
13	96	3%	-1%
14	94	5%	-1%
15	94	3%	-1%
16	91	4%	-6%



Color vector graphics

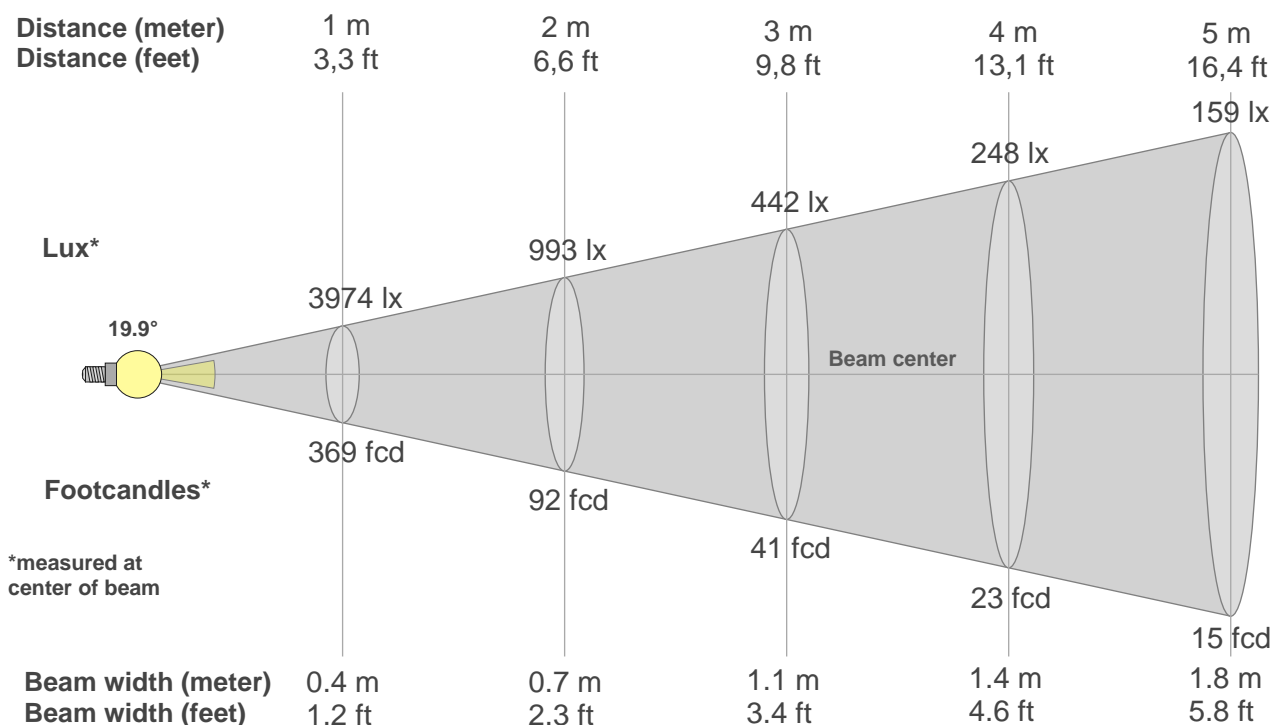


Color distortion



Color Evaluation Sample

Beam details



Beam intensities from 1-20m

1m	2m	3m	4m	5m	6m	7m	8m	9m	10m	11m	12m	13m	14m	15m	16m	17m	18m	19m	20m
3.3ft	6.6ft	9.8ft	13.1ft	16.4ft	19.7ft	23ft	26.2ft	29.5ft	32.8ft	36.1ft	39.4ft	42.7ft	45.9ft	49.2ft	52.5ft	55.8ft	59.1ft	62.3ft	65.6ft
3974lx	993lx	442lx	248lx	159lx	110lx	81lx	62lx	49lx	40lx	33lx	28lx	24lx	20lx	18lx	16lx	14lx	12lx	11lx	10lx
369.2fcd	92.3fcd	41fcd	23.1fcd	14.8fcd	10.3fcd	7.5fcd	5.8fcd	4.6fcd	3.7fcd	3.1fcd	2.6fcd	2.2fcd	1.9fcd	1.6fcd	1.4fcd	1.3fcd	1.1fcd	1fcd	0.9fcd

Intensities in 0° c-plane

0°	2°	4°	6°	8°	10°	12°	14°	16°	18°	20°	22°	24°	26°	28°	30°	32°	34°	36°	38°
3974	3862	3533	3040	2508	2017	1597	1260	1002	818	673	555	451	354	269	194	134	89	59	41
100%	97%	89%	76%	63%	51%	40%	32%	25%	21%	17%	14%	11%	9%	7%	5%	3%	2%	1%	1%

Intensities in 90° c-plane

0°	2°	4°	6°	8°	10°	12°	14°	16°	18°	20°	22°	24°	26°	28°	30°	32°	34°	36°	38°
3974	3854	3475	2983	2459	1961	1533	1208	969	788	646	528	428	333	248	176	118	77	53	35
100%	97%	87%	75%	62%	49%	39%	30%	24%	20%	16%	13%	11%	8%	6%	4%	3%	2%	1%	1%

Intensities in 180° c-plane

0°	2°	4°	6°	8°	10°	12°	14°	16°	18°	20°	22°	24°	26°	28°	30°	32°	34°	36°	38°
3974	3874	3556	3073	2528	2018	1575	1214	937	747	598	475	369	276	200	140	95	64	44	31
100%	97%	89%	77%	64%	51%	40%	31%	24%	19%	15%	12%	9%	7%	5%	4%	2%	2%	1%	1%

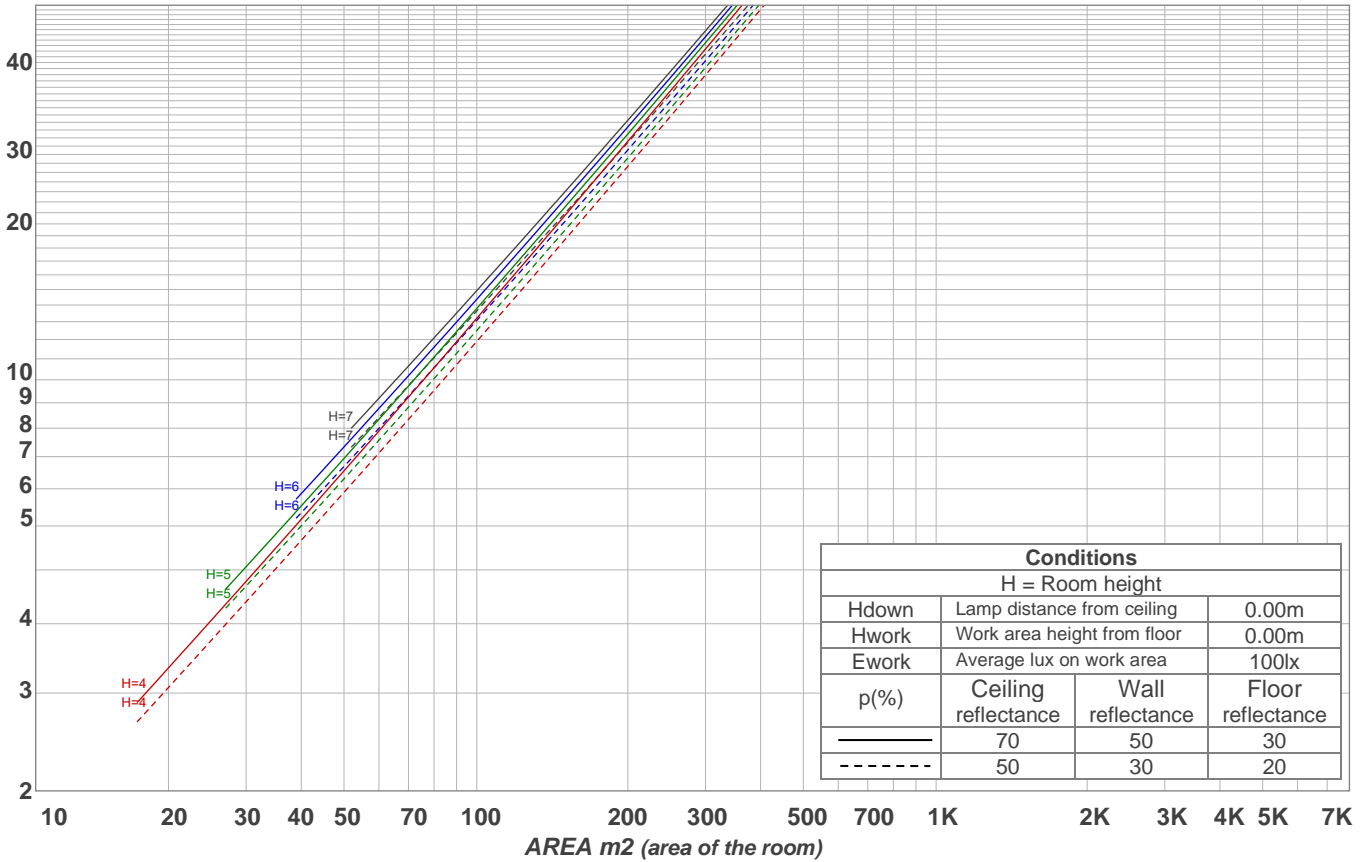
Intensities in 270° c-plane

0°	2°	4°	6°	8°	10°	12°	14°	16°	18°	20°	22°	24°	26°	28°	30°	32°	34°	36°	38°
3974	3835	3497	3014	2463	1956	1527	1185	925	735	597	481	377	284	203	140	94	63	42	29
100%	96%	88%	76%	62%	49%	38%	30%	23%	18%	15%	12%	9%	7%	5%	4%	2%	2%	1%	1%

Beam angle 50%	Field angle 10%	Cutoff angle 2,5%	Intensity ratio in 120° cone	Intensity ratio in 90° cone
19.9°	48.3°	64.9°	99.1%	98.0%

LAMPS (number of lamps)
50

Light planning Luminaire budgetary diagram



Luminaire budgetary diagram AREA m2 (area of the room) Coefficients of Utilization

Ceiling reflectance	80				70				50			30			10			0
Wall reflectance	70	50	30	10	70	50	30	10	50	30	10	50	30	10	50	30	10	0
Floor reflectance	20	20	20	20	20	20	20	20	20	20	20	20	20	20	20	20	20	0
RCR	(RCR: Room Cavity Ratio) Room Values are expressed as percentage of Lumens delivered to the task surface																	
0	119	119	119	119	116	116	116	116	111	111	111	106	106	106	102	102	102	100
1	115	112	110	108	112	110	108	107	106	105	104	103	101	100	99	98	98	96
2	111	107	104	101	108	105	102	100	102	100	98	99	97	96	96	95	94	92
3	107	102	98	95	105	100	97	94	98	95	93	96	93	91	94	92	90	89
4	103	97	93	90	102	96	92	89	94	91	88	92	90	87	91	88	87	85
5	100	94	89	86	98	93	89	86	91	88	85	90	87	84	88	86	83	82
6	97	90	86	82	95	89	85	82	88	84	82	87	84	81	86	83	81	79
7	94	87	82	79	93	86	82	79	85	81	79	84	81	78	83	80	78	77
8	91	84	80	77	90	83	79	76	83	79	76	82	78	76	81	78	76	75
9	88	81	77	74	87	81	77	74	80	76	74	79	76	73	79	76	73	72
10	86	79	75	72	85	78	74	72	78	74	71	77	74	71	76	73	71	70

Zonal Lumen Summary

0°-10°	10°-20°	20°-30°	30°-40°	40°-50°	50°-60°	60°-70°	70°-80°	80°-90°
270 lm	306 lm	164 lm	42.5 lm	9.92 lm	4.71 lm	2.99 lm	2.02 lm	2.36 lm

90°-100°	100°-110°	110°-120°	120°-130°	130°-140°	140°-150°	150°-160°	160°-170°	170°-180°
0.000 lm	0.000 lm	0.000 lm	0.000 lm	0.000 lm	0.000 lm	0.000 lm	0.000 lm	0.000 lm

www.graffitilighting.com As a result of our continuous improvement, values are subject to change without notice. These are delivered results and can vary +/- 10% from published source data range.