

Light efficiency:



Output: 825 lm

Light quality:

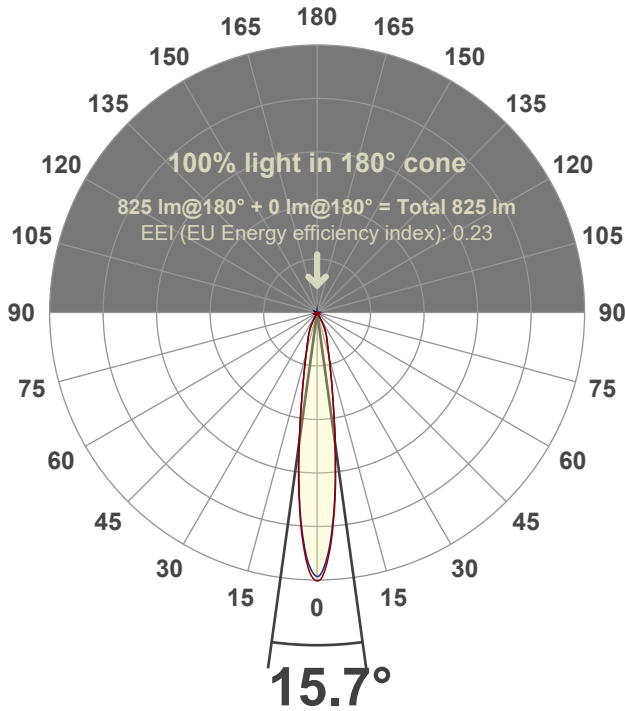


Peak: 6027 cd

Power: 14.6 W



Beam angle



Test number:

GR-F-A14-3019-SP-RD-Rev2

Luminaire Model:

Graffiti Regress Round Fixed Downlight-A14-3019 15° Optic

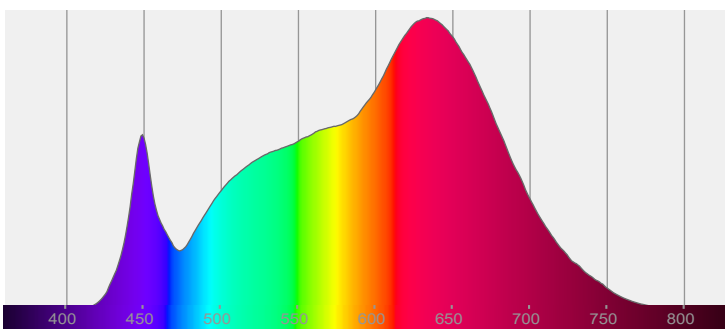
Date and time:

3/24/2022 8:09:13 PM

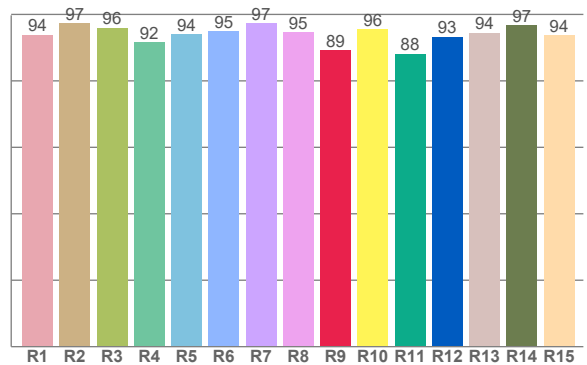
Delivered Lumens

825

Spectra



CRI: 95.0 (R1-R8)



Color parameters

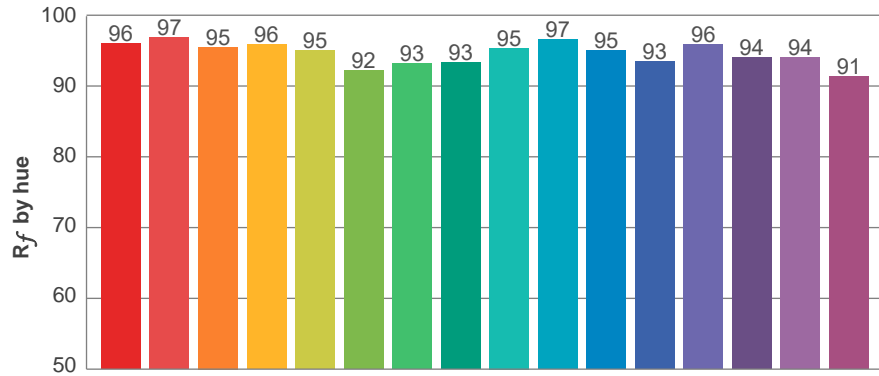
	Color rendering index	Red component	Color fidelity	Color gamut	Color quality scale	Color coordinate cie 1931	Color coordinate cie 1931	Color coordinate	Color coordinate	Color deviation from black body
	CRI	CRI R9	TM30 R _f	TM30 R _g	CQS	x	y	u	v	Δuv
	95.0	89.3	94.9	105.4	95.1	0.422	0.387	0.248	0.342	-0.0046

R_f 94.9
Fidelity index R_f

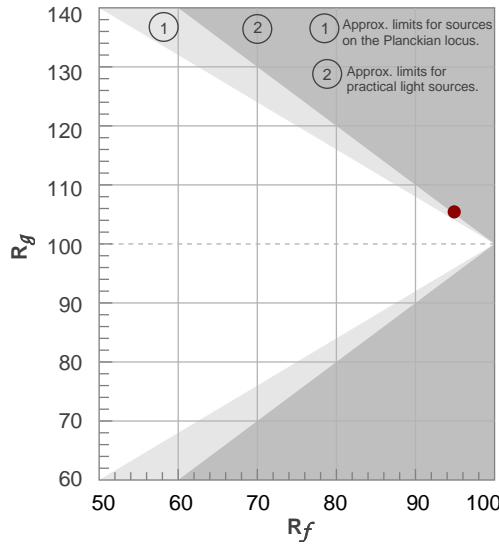
R_g 105.4
Gammut index R_g

TM30: 94.9

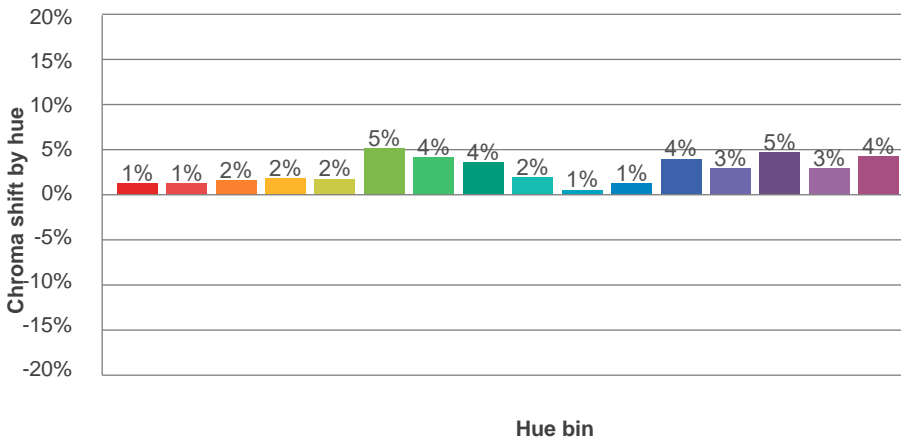
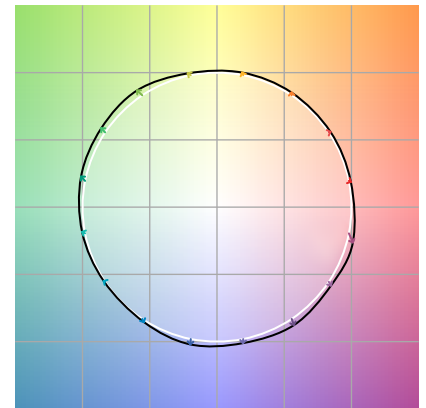
TM-30Color



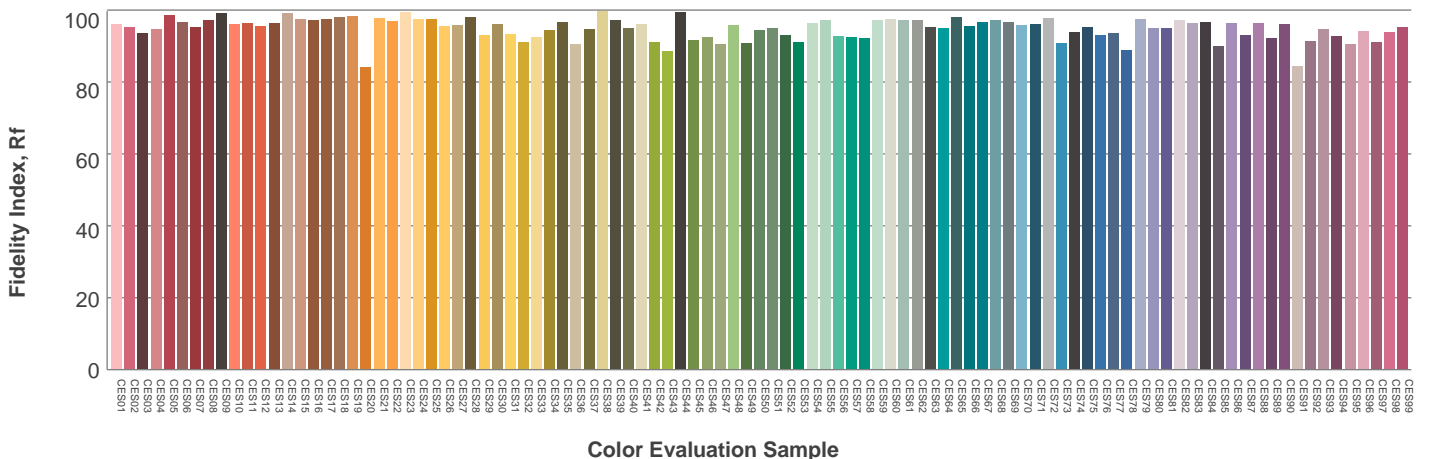
Hue Bin	R_f	Graphic shifts (%)	
		Chroma	Hue
1	96	1%	-1%
2	97	1%	0%
3	95	2%	1%
4	96	2%	1%
5	95	2%	2%
6	92	5%	1%
7	93	4%	-1%
8	93	4%	-3%
9	95	2%	-2%
10	97	1%	-1%
11	95	1%	2%
12	93	4%	0%
13	96	3%	-1%
14	94	5%	-1%
15	94	3%	-1%
16	91	4%	-6%



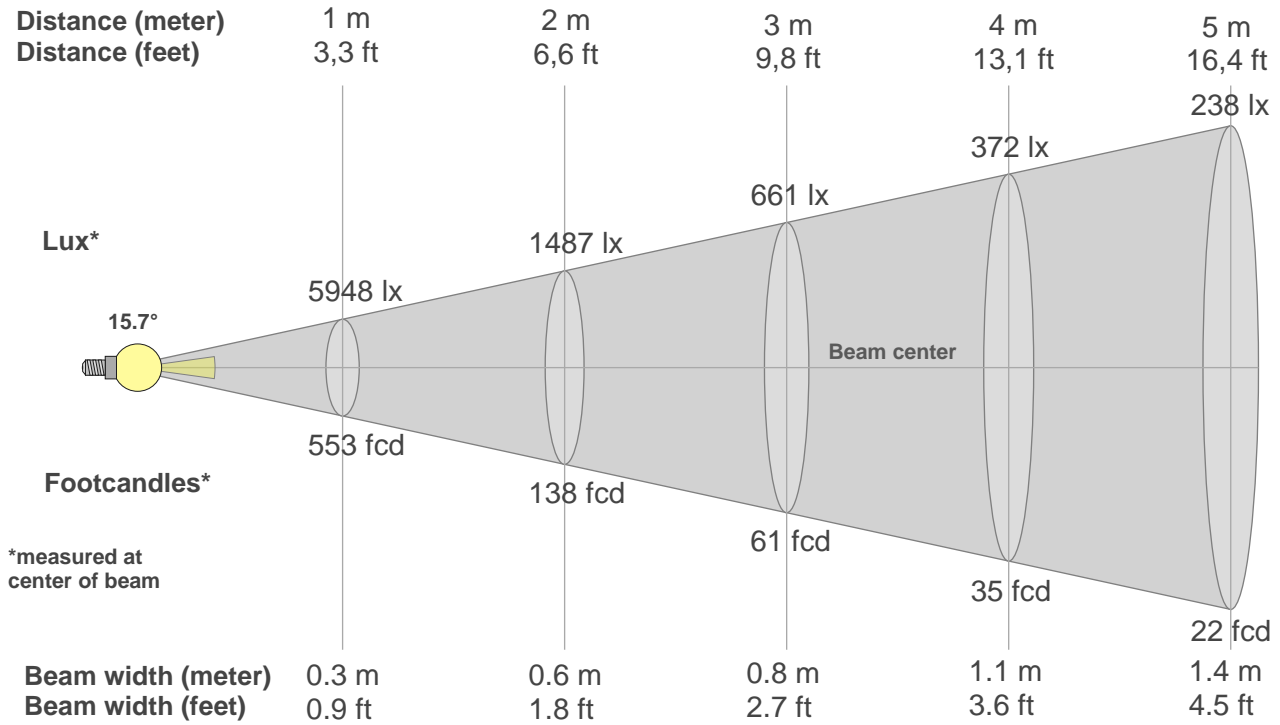
Color vector graphics



Color distortion



Beam details



Beam intensities from 1-20m

1m	2m	3m	4m	5m	6m	7m	8m	9m	10m	11m	12m	13m	14m	15m	16m	17m	18m	19m	20m
3.3ft	6.6ft	9.8ft	13.1ft	16.4ft	19.7ft	23ft	26.2ft	29.5ft	32.8ft	36.1ft	39.4ft	42.7ft	45.9ft	49.2ft	52.5ft	55.8ft	59.1ft	62.3ft	65.6ft
5948lx	1487lx	661lx	372lx	238lx	165lx	121lx	93lx	73lx	59lx	49lx	41lx	35lx	30lx	26lx	23lx	21lx	18lx	16lx	15lx
552.6fcd	138.1fcd	61.4fcd	34.5fcd	22.1fcd	15.3fcd	11.3fcd	8.6fcd	6.8fcd	5.5fcd	4.6fcd	3.8fcd	3.3fcd	2.8fcd	2.5fcd	2.2fcd	1.9fcd	1.7fcd	1.5fcd	1.4fcd

Intensities in 0° c-plane

0°	2°	4°	6°	8°	10°	12°	14°	16°	18°	20°	22°	24°	26°	28°	30°	32°	34°	36°	38°
5948	5676	4944	3975	2945	2152	1602	1217	952	775	651	563	464	361	250	133	38	12	7	6
100%	95%	83%	67%	50%	36%	27%	20%	16%	13%	11%	9%	8%	6%	4%	2%	1%	0%	0%	0%

Intensities in 90° c-plane

0°	2°	4°	6°	8°	10°	12°	14°	16°	18°	20°	22°	24°	26°	28°	30°	32°	34°	36°	38°
5948	5570	4856	3925	2928	2137	1593	1213	953	776	661	567	471	367	252	132	53	14	5	4
100%	94%	82%	66%	49%	36%	27%	20%	16%	13%	11%	10%	8%	6%	4%	2%	1%	0%	0%	0%

Intensities in 180° c-plane

0°	2°	4°	6°	8°	10°	12°	14°	16°	18°	20°	22°	24°	26°	28°	30°	32°	34°	36°	38°
5948	5736	5000	3983	2943	2084	1474	1087	842	692	582	480	374	261	140	50	17	8	6	5
100%	96%	84%	67%	49%	35%	25%	18%	14%	12%	10%	8%	6%	4%	2%	1%	0%	0%	0%	0%

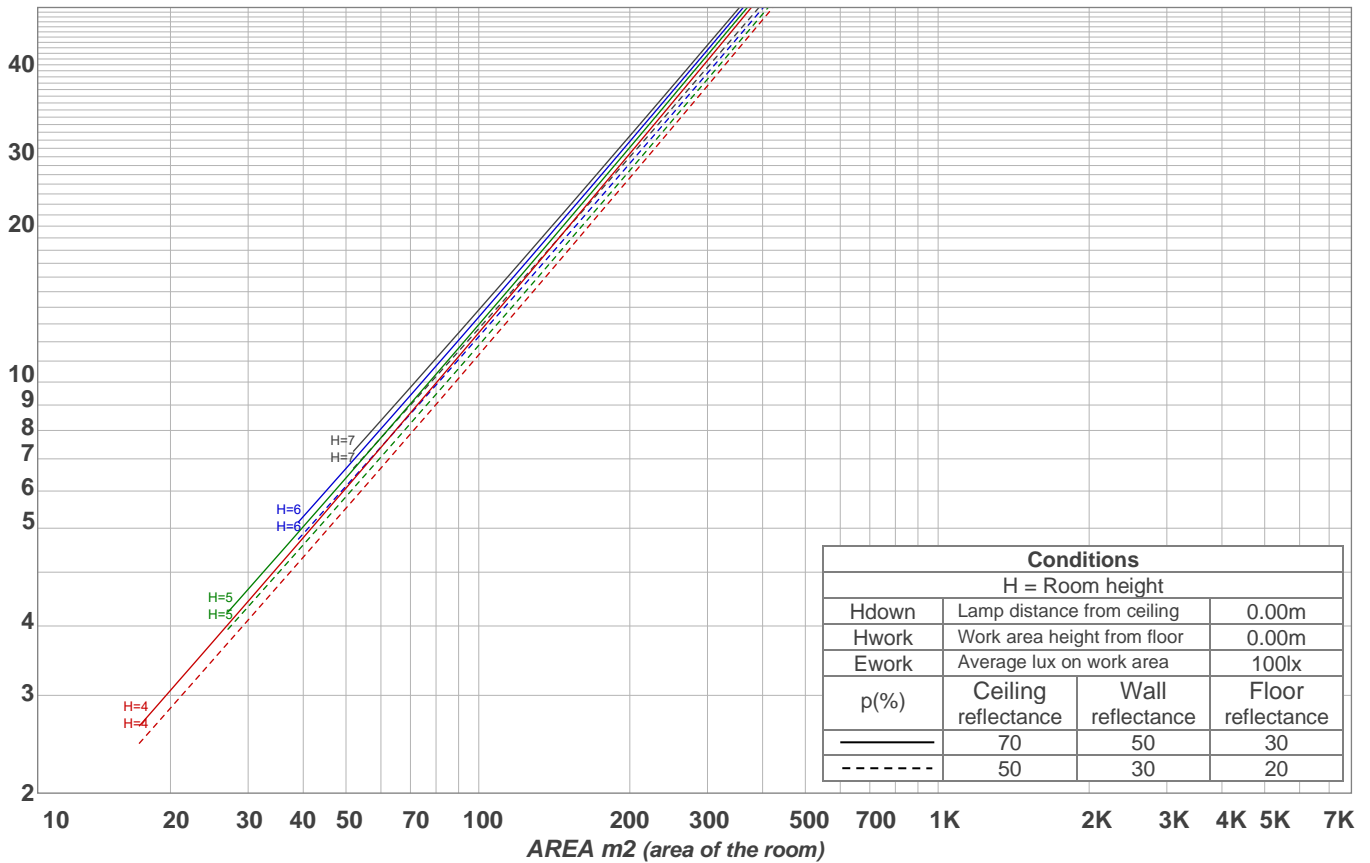
Intensities in 270° c-plane

0°	2°	4°	6°	8°	10°	12°	14°	16°	18°	20°	22°	24°	26°	28°	30°	32°	34°	36°	38°
5948	5644	4885	3920	2918	2036	1464	1115	875	709	589	487	378	261	147	53	13	6	5	4
100%	95%	82%	66%	49%	34%	25%	19%	15%	12%	10%	8%	6%	4%	2%	1%	0%	0%	0%	0%

Beam angle 50%	Field angle 10%	Cutoff angle 2,5%	Intensity ratio in 120° cone	Intensity ratio in 90° cone
15.7°	40.9°	57.6°	98.9%	98.4%

LAMPS (number of lamps)
50

Light planning Luminaire budgetary diagram



Luminaire budgetary diagram AREA m2 (area of the room) Coefficients of Utilization

Ceiling reflectance	80				70				50			30			10			0			
Wall reflectance	70	50	30	10	70	50	30	10	50	30	10	50	30	10	50	30	10	50	30	10	0
Floor reflectance	20	20	20	20	20	20	20	20	20	20	20	20	20	20	20	20	20	20	20	20	0
RCR	(RCR: Room Cavity Ratio)																				
	Room Values are expressed as percentage of Lumens delivered to the task surface																				
0	119	119	119	119	116	116	116	116	111	111	111	106	106	106	102	102	102	100	100	100	
1	115	113	111	109	113	111	109	107	107	105	104	103	102	101	100	99	98	96	96	96	
2	111	108	105	102	109	106	103	101	103	101	99	100	98	97	97	96	95	93	93	93	
3	108	103	100	97	106	102	99	96	99	97	95	97	95	93	95	93	92	90	90	90	
4	105	99	95	92	103	98	95	92	96	93	91	94	92	90	93	91	89	88	88	88	
5	102	96	92	89	100	95	91	89	93	90	88	92	89	87	91	88	86	85	85	85	
6	99	93	89	86	98	92	88	86	91	88	85	90	87	85	88	86	84	83	83	83	
7	96	90	86	83	95	90	86	83	88	85	83	87	84	82	86	84	82	81	81	81	
8	94	88	84	81	93	87	83	81	86	83	80	85	82	80	84	82	80	79	79	79	
9	92	85	81	79	91	85	81	79	84	81	78	83	80	78	83	80	78	77	77	77	
10	89	83	79	77	89	83	79	77	82	79	76	81	78	76	81	78	76	75	75	75	

Zonal Lumen Summary

0°-10°	10°-20°	20°-30°	30°-40°	40°-50°	50°-60°	60°-70°	70°-80°	80°-90°
343 lm	297 lm	160 lm	10.7 lm	3.00 lm	2.58 lm	2.97 lm	2.88 lm	3.35 lm
90°-100°	100°-110°	110°-120°	120°-130°	130°-140°	140°-150°	150°-160°	160°-170°	170°-180°
0.000 lm	0.000 lm	0.000 lm	0.000 lm	0.000 lm	0.000 lm	0.000 lm	0.000 lm	0.000 lm