

Light efficiency:



Output: 808 lm

Light quality:

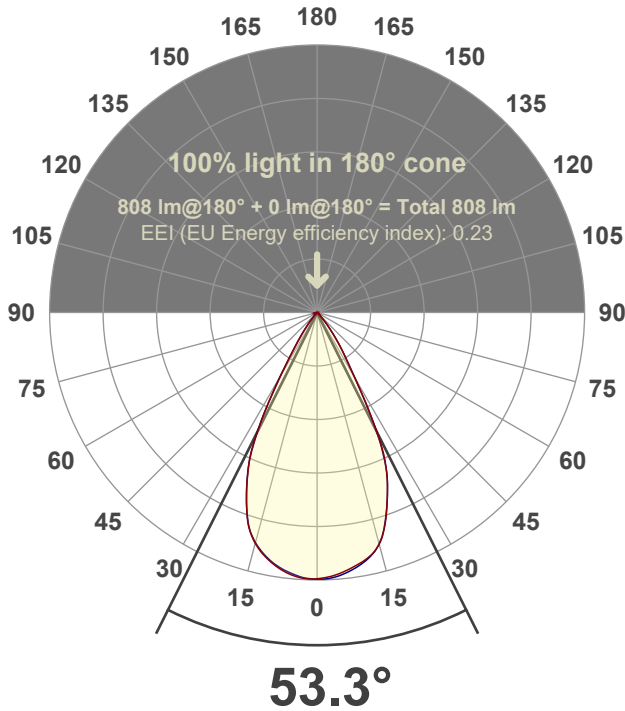


Peak: 1150 cd

Power: 14.6 W



Beam angle



Test number:

GR-F-A14-3019-WF-RD-Rev2

Luminaire Model:

Graffiti Regress Round Fixed Downlight-A14-3019 60° Optic

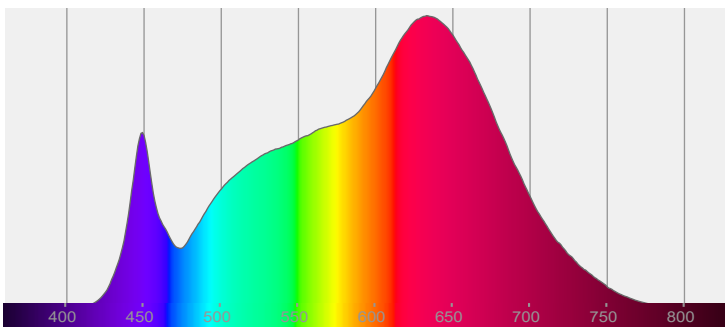
Date and time:

3/24/2022 10:05:03 PM

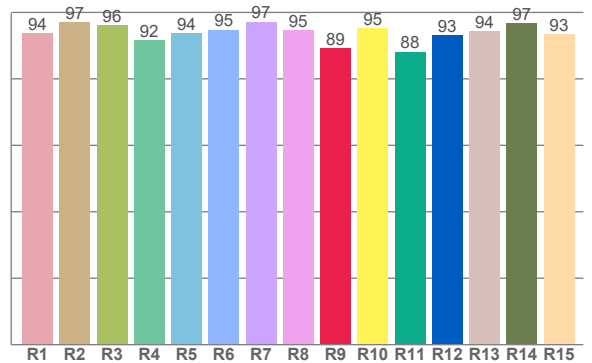
Delivered Lumens

808

Spectra



CRI: 94.9 (R1-R8)



Color parameters

	Color rendering index	Red component	Color fidelity	Color gamut	Color quality scale	Color coordinate cie 1931	Color coordinate cie 1931	Color coordinate	Color coordinate	Color deviation from black body
	CRI	CRI R9	TM30 R _f	TM30 R _g	CQS	x	y	u	v	Δuv
	94.9	89.1	94.8	105.6	95.0	0.422	0.387	0.248	0.341	-0.0050

R_f 94.8

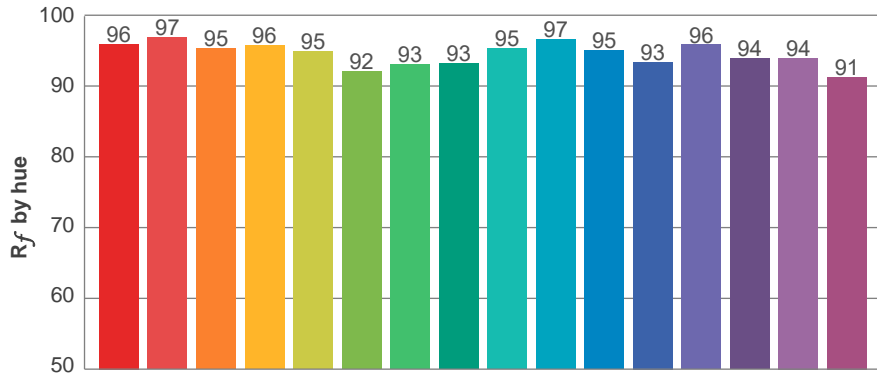
Fidelity index R_f

R_g 105.6

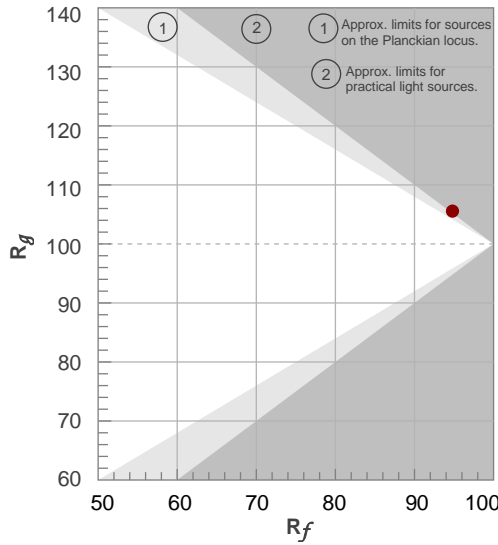
Gammut index R_g

TM30: 94.8

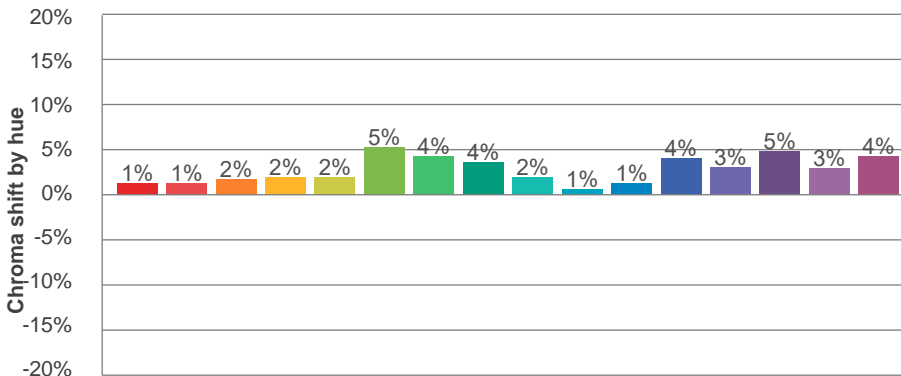
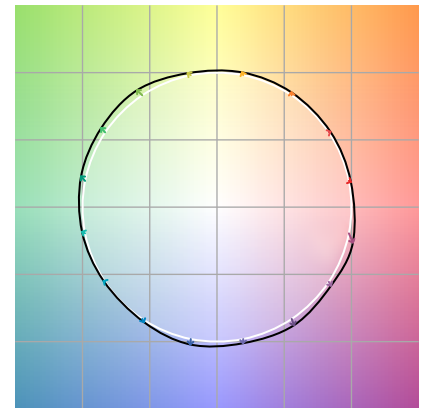
TM-30Color



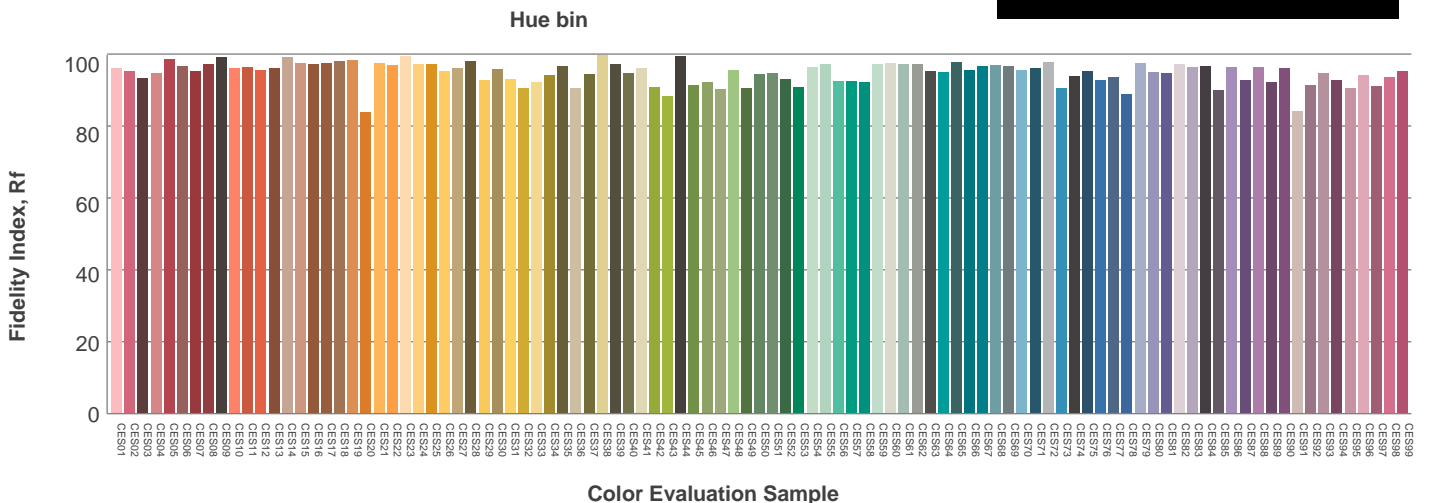
Hue Bin	R_f	Graphic shifts (%)	
		Chroma	Hue
1	96	1%	-1%
2	97	1%	0%
3	95	2%	1%
4	96	2%	1%
5	95	2%	2%
6	92	5%	1%
7	93	4%	-1%
8	93	4%	-3%
9	95	2%	-2%
10	97	1%	-1%
11	95	1%	2%
12	93	4%	0%
13	96	3%	-1%
14	94	5%	-1%
15	94	3%	-1%
16	91	4%	-6%



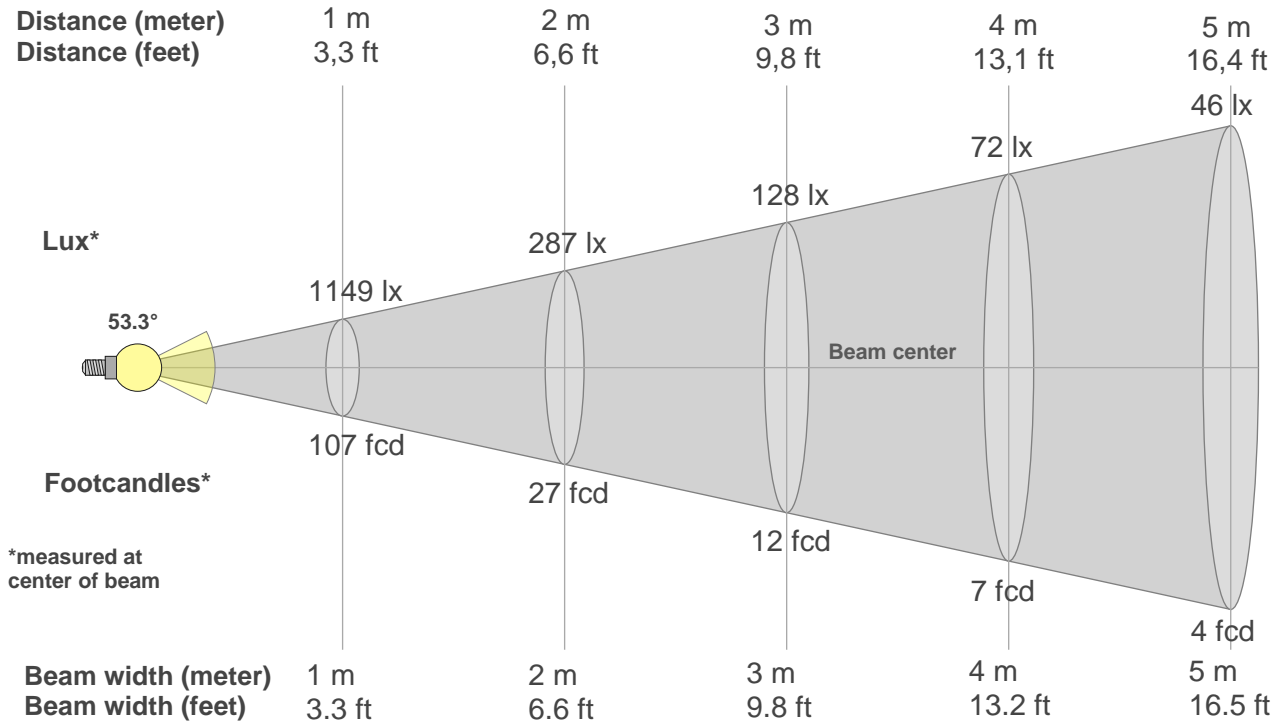
Color vector graphics



Color distortion



Beam details



Beam intensities from 1-20m

1m	2m	3m	4m	5m	6m	7m	8m	9m	10m	11m	12m	13m	14m	15m	16m	17m	18m	19m	20m
3.3ft	6.6ft	9.8ft	13.1ft	16.4ft	19.7ft	23ft	26.2ft	29.5ft	32.8ft	36.1ft	39.4ft	42.7ft	45.9ft	49.2ft	52.5ft	55.8ft	59.1ft	62.3ft	65.6ft
1149lx	287lx	128lx	72lx	46lx	32lx	23lx	18lx	14lx	11lx	9lx	8lx	7lx	6lx	5lx	4lx	4lx	4lx	3lx	3lx
106.7fcd	26.7fcd	11.9fcd	6.7fcd	4.3fcd	3fcd	2.2fcd	1.7fcd	1.3fcd	1.1fcd	0.9fcd	0.7fcd	0.6fcd	0.5fcd	0.5fcd	0.4fcd	0.4fcd	0.3fcd	0.3fcd	0.3fcd

Intensities in 0° c-plane

0°	2°	4°	6°	8°	10°	12°	14°	16°	18°	20°	22°	24°	26°	28°	30°	32°	34°	36°	38°
1149	1143	1135	1123	1109	1095	1076	1051	1013	953	883	811	729	624	477	342	254	191	143	101
100%	99%	99%	98%	97%	95%	94%	91%	88%	83%	77%	71%	64%	54%	42%	30%	22%	17%	12%	9%

Intensities in 90° c-plane

0°	2°	4°	6°	8°	10°	12°	14°	16°	18°	20°	22°	24°	26°	28°	30°	32°	34°	36°	38°
1149	1149	1143	1132	1118	1101	1081	1053	1009	950	882	811	732	617	472	341	246	189	138	100
100%	100%	100%	99%	97%	96%	94%	92%	88%	83%	77%	71%	64%	54%	41%	30%	21%	16%	12%	9%

Intensities in 180° c-plane

0°	2°	4°	6°	8°	10°	12°	14°	16°	18°	20°	22°	24°	26°	28°	30°	32°	34°	36°	38°
1149	1149	1144	1135	1119	1100	1076	1047	1011	961	889	811	726	624	478	330	225	154	105	69
100%	100%	100%	99%	97%	96%	94%	91%	88%	84%	77%	71%	63%	54%	42%	29%	20%	13%	9%	6%

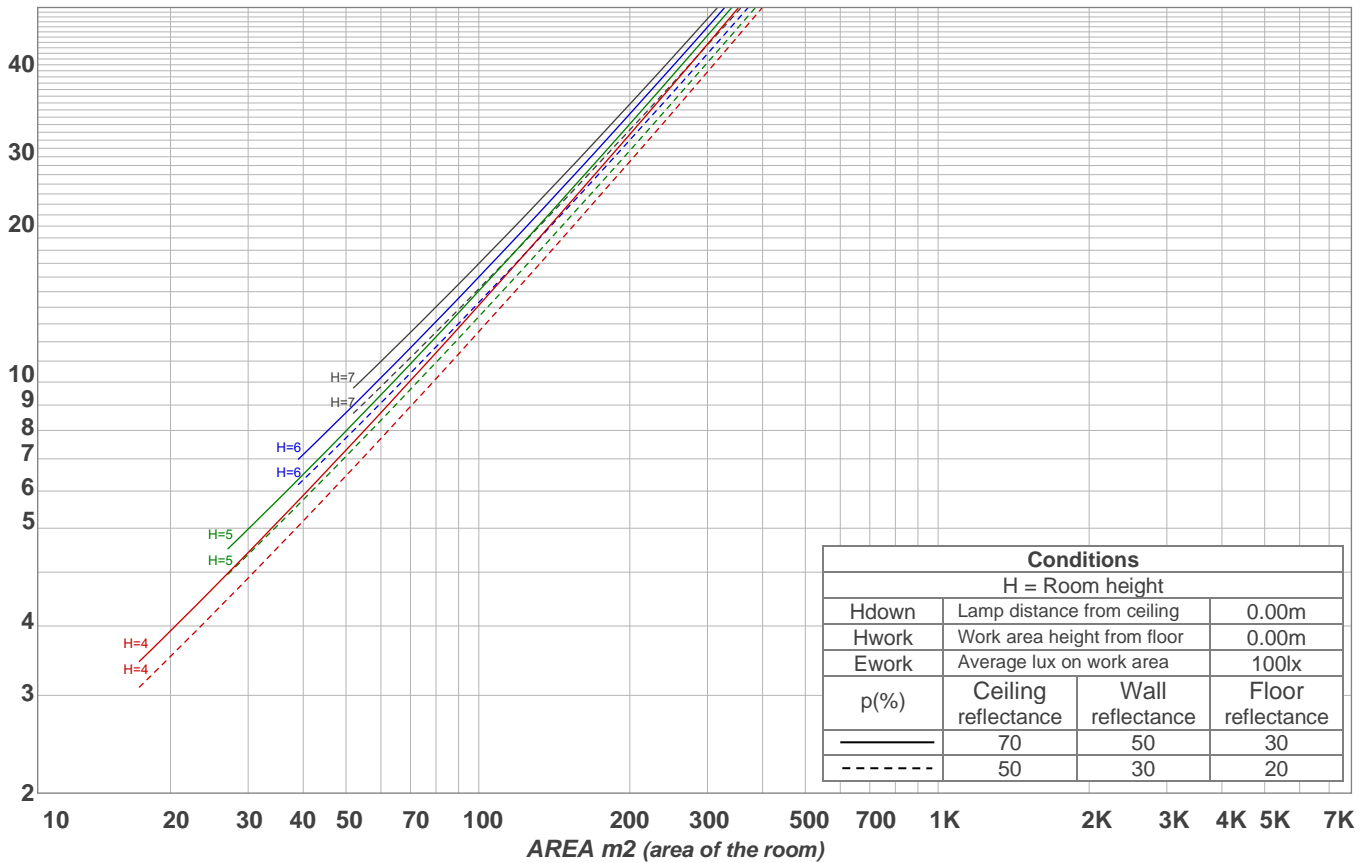
Intensities in 270° c-plane

0°	2°	4°	6°	8°	10°	12°	14°	16°	18°	20°	22°	24°	26°	28°	30°	32°	34°	36°	38°
1149	1147	1140	1128	1114	1096	1072	1043	1007	958	891	813	727	616	479	331	214	150	102	67
100%	100%	99%	98%	97%	95%	93%	91%	88%	83%	78%	71%	63%	54%	42%	29%	19%	13%	9%	6%

Beam angle 50%	Field angle 10%	Cutoff angle 2,5%	Intensity ratio in 120° cone	Intensity ratio in 90° cone
53.3°	72.7°	86.1°	99.3%	98.4%

LAMPS (number of lamps)
50

Light planning Luminaire budgetary diagram



Luminaire budgetary diagram AREA m2 (area of the room) Coefficients of Utilization

Ceiling reflectance	80				70				50			30			10			0			
Wall reflectance	70	50	30	10	70	50	30	10	50	30	10	50	30	10	50	30	10	50	30	10	0
Floor reflectance	20	20	20	20	20	20	20	20	20	20	20	20	20	20	20	20	20	20	20	20	0
RCR	(RCR: Room Cavity Ratio)																				
	Room Values are expressed as percentage of Lumens delivered to the task surface																				
0	119	119	119	119	116	116	116	116	111	111	111	106	106	106	102	102	102	100	100	100	
1	114	111	109	107	111	109	107	105	105	103	102	101	100	99	98	97	96	94	94	94	
2	109	104	101	97	107	103	99	96	99	97	94	97	94	92	94	92	90	89	89	89	
3	104	98	94	90	102	97	93	89	94	91	88	92	89	86	90	87	85	84	84	84	
4	99	93	88	84	98	91	87	83	89	85	82	87	84	81	86	83	80	79	79	79	
5	95	87	82	78	94	87	82	78	85	81	77	83	80	77	82	79	76	75	75	75	
6	91	83	77	74	90	82	77	73	81	76	73	79	75	72	78	75	72	71	71	71	
7	87	79	73	69	86	78	73	69	77	72	69	76	71	68	75	71	68	67	67	67	
8	83	75	69	66	82	74	69	65	73	68	65	72	68	65	71	67	65	63	63	63	
9	80	71	66	62	79	71	65	62	70	65	62	69	65	62	68	64	61	60	60	60	
10	77	68	62	59	76	67	62	59	67	62	59	66	62	59	65	61	58	57	57	57	

Zonal Lumen Summary

0°-10°	10°-20°	20°-30°	30°-40°	40°-50°	50°-60°	60°-70°	70°-80°	80°-90°
107 lm	285 lm	293 lm	96.2 lm	16.9 lm	2.53 lm	2.11 lm	1.71 lm	2.09 lm
90°-100°	100°-110°	110°-120°	120°-130°	130°-140°	140°-150°	150°-160°	160°-170°	170°-180°
0.000 lm	0.000 lm	0.000 lm	0.000 lm	0.000 lm	0.000 lm	0.000 lm	0.000 lm	0.000 lm