

Light efficiency:



Output: 773 lm

Light quality:

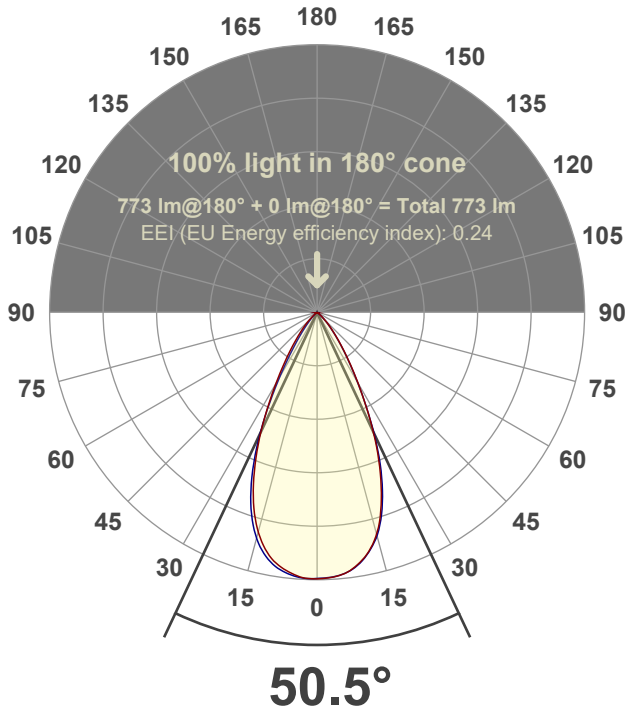


Peak: 1068 cd

Power: 14.6 W



Beam angle



Test number:

GR-F-A14-3019-WF-SQ-91A-Rev2

Luminaire Model:

Graffiti Regress Square Fixed Downlight-A14-3019 60° Optic-Solite

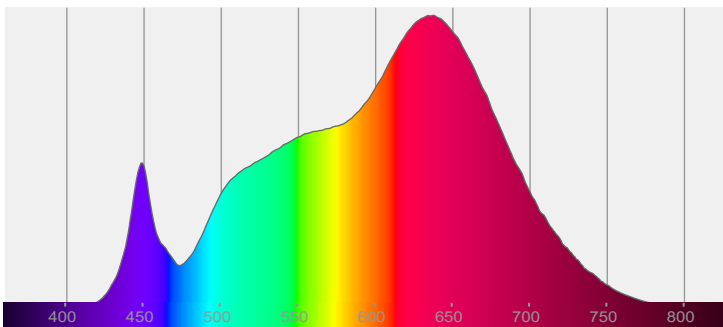
Date and time:

6/21/2022 9:25:30 PM

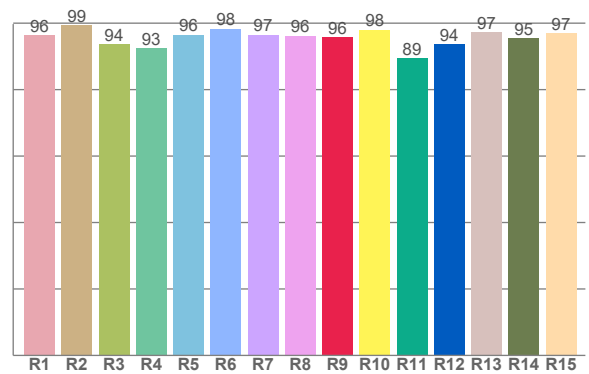
Delivered Lumens

773

Spectra



CRI: 96.2 (R1-R8)



Color parameters

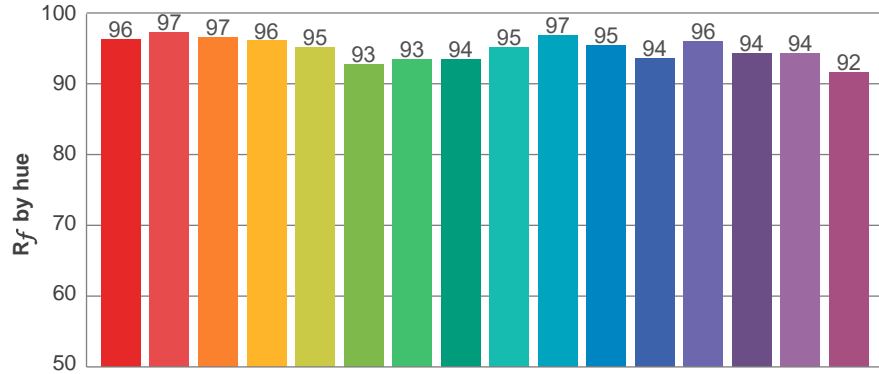
Color rendering index	Red component	Color fidelity	Color gamut	Color quality scale	Color coordinate cie 1931	Color coordinate cie 1931	Color coordinate	Color coordinate	Color diviation from black body
CRI	CRI R9	TM30 R _f	TM30 R _g	CQS	x	y	u	v	Δuv
96.2	95.8	95.2	104.4	94.8	0.435	0.401	0.251	0.347	-0.0008

R_f 95.2
Fidelity index R_f

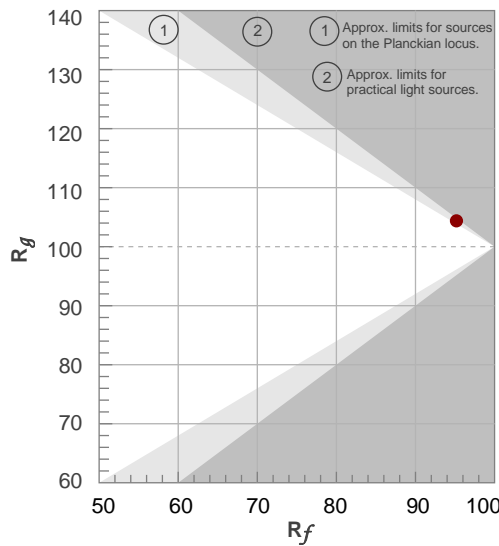
R_g 104.4
Gammut index R_g

TM30: 95.2

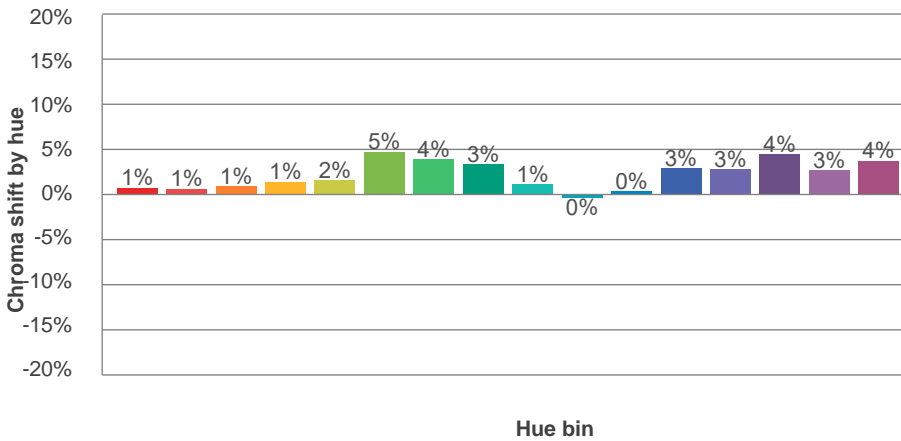
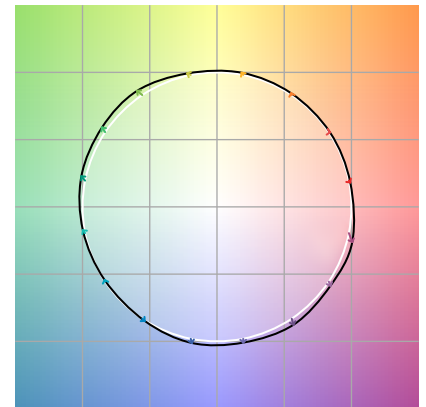
TM-30Color



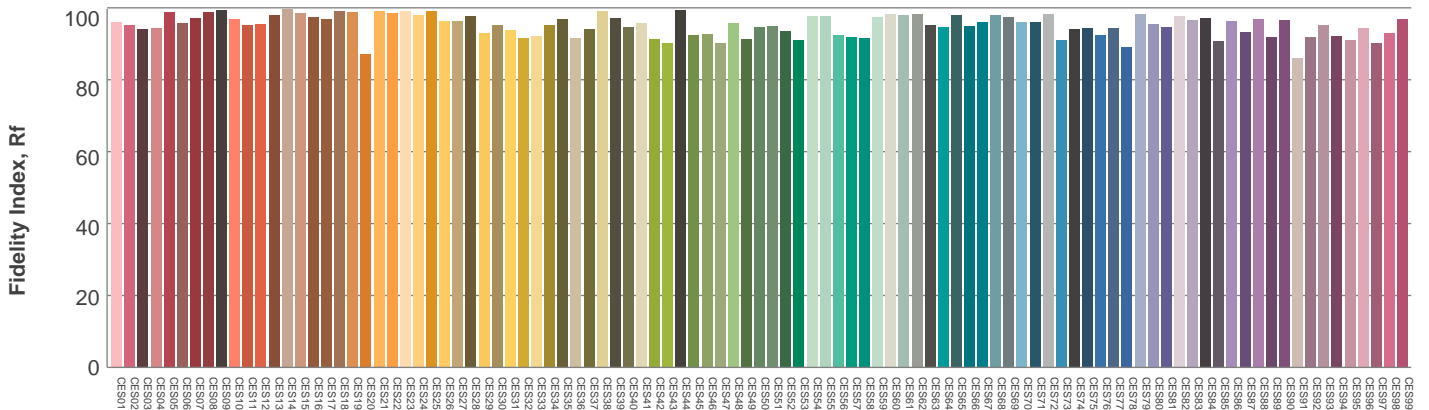
Hue Bin	R_f	Graphic shifts (%)	
		Chroma	Hue
1	96	1%	-2%
2	97	1%	-1%
3	97	1%	1%
4	96	1%	2%
5	95	2%	2%
6	93	5%	1%
7	93	4%	-2%
8	94	3%	-3%
9	95	1%	-2%
10	97	0%	-1%
11	95	0%	2%
12	94	3%	1%
13	96	3%	-1%
14	94	4%	-1%
15	94	3%	-2%
16	92	4%	-6%



Color vector graphics

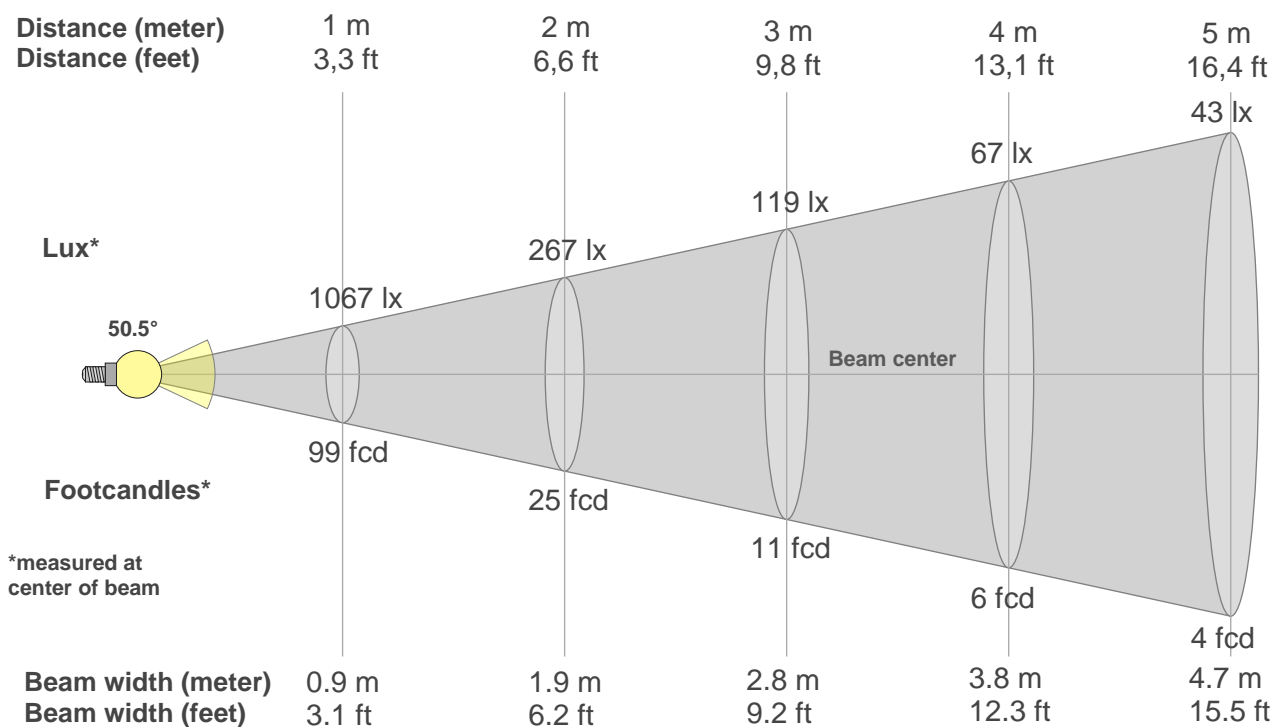


Color distortion



Color Evaluation Sample

Beam details



Beam intensities from 1-20m

1m	2m	3m	4m	5m	6m	7m	8m	9m	10m	11m	12m	13m	14m	15m	16m	17m	18m	19m	20m
3.3ft	6.6ft	9.8ft	13.1ft	16.4ft	19.7ft	23ft	26.2ft	29.5ft	32.8ft	36.1ft	39.4ft	42.7ft	45.9ft	49.2ft	52.5ft	55.8ft	59.1ft	62.3ft	65.6ft
1067lx	267lx	119lx	67lx	43lx	30lx	22lx	17lx	13lx	11lx	9lx	7lx	6lx	5lx	5lx	4lx	4lx	3lx	3lx	3lx
99.1fcd	24.8fcd	11fcd	6.2fcd	4fcd	2.8fcd	2fcd	1.5fcd	1.2fcd	1fcd	0.8fcd	0.7fcd	0.6fcd	0.5fcd	0.4fcd	0.4fcd	0.3fcd	0.3fcd	0.3fcd	0.2fcd

Intensities in 0° c-plane

0°	2°	4°	6°	8°	10°	12°	14°	16°	18°	20°	22°	24°	26°	28°	30°	32°	34°	36°	38°
1067	1066	1061	1052	1035	1012	983	945	893	828	753	672	586	496	411	335	270	215	170	135
100%	100%	99%	99%	97%	95%	92%	89%	84%	78%	71%	63%	55%	47%	39%	31%	25%	20%	16%	13%

Intensities in 90° c-plane

0°	2°	4°	6°	8°	10°	12°	14°	16°	18°	20°	22°	24°	26°	28°	30°	32°	34°	36°	38°
1067	1064	1060	1052	1038	1016	985	948	901	840	768	685	595	502	410	329	264	210	165	128
100%	100%	99%	99%	97%	95%	92%	89%	84%	79%	72%	64%	56%	47%	38%	31%	25%	20%	16%	12%

Intensities in 180° c-plane

0°	2°	4°	6°	8°	10°	12°	14°	16°	18°	20°	22°	24°	26°	28°	30°	32°	34°	36°	38°
1067	1067	1060	1048	1032	1009	977	935	884	822	749	668	584	498	412	336	272	219	174	136
100%	100%	99%	98%	97%	95%	92%	88%	83%	77%	70%	63%	55%	47%	39%	31%	25%	20%	16%	13%

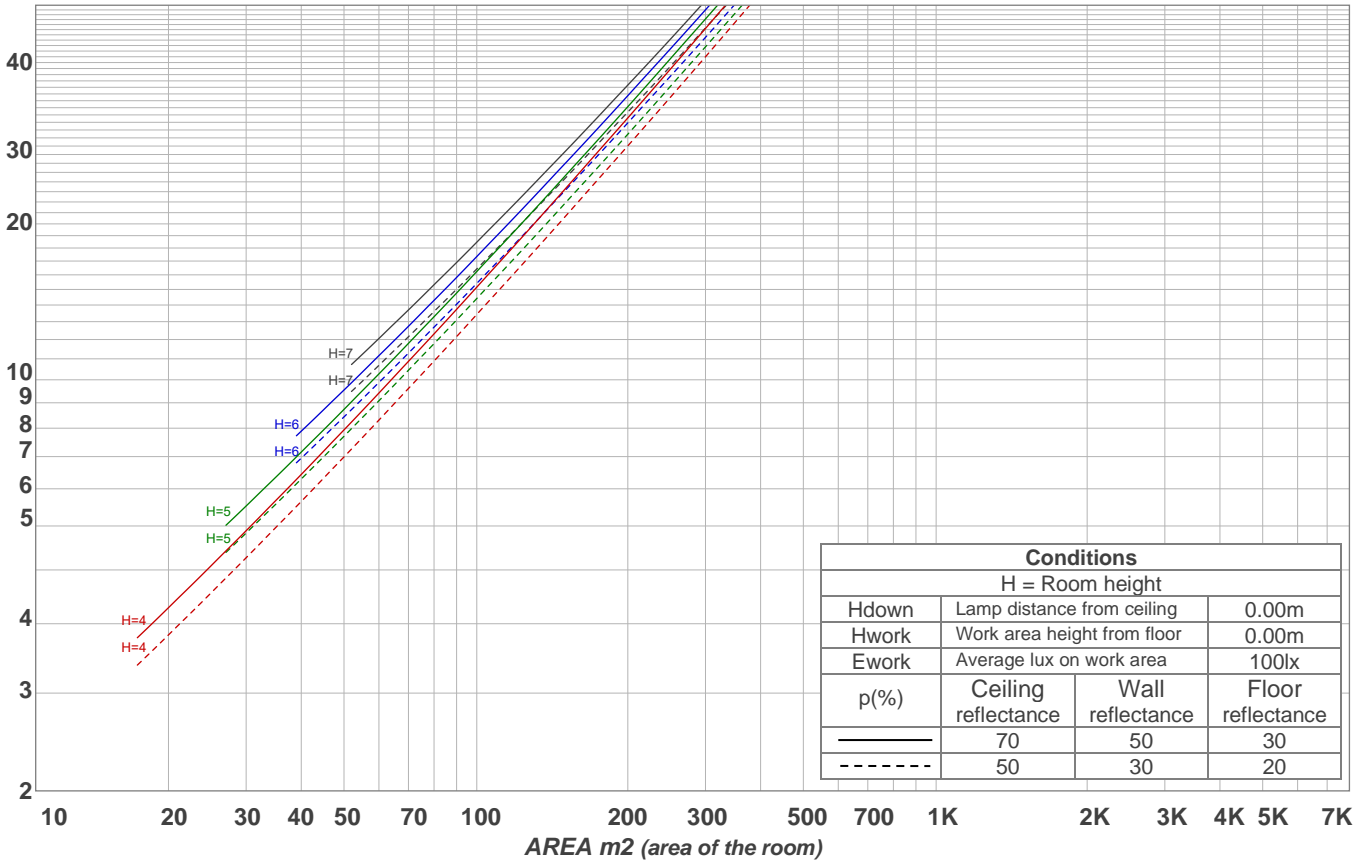
Intensities in 270° c-plane

0°	2°	4°	6°	8°	10°	12°	14°	16°	18°	20°	22°	24°	26°	28°	30°	32°	34°	36°	38°
1067	1068	1064	1055	1043	1024	997	960	910	850	778	694	600	499	400	309	231	170	128	94
100%	100%	100%	99%	98%	96%	93%	90%	85%	80%	73%	65%	56%	47%	37%	29%	22%	16%	12%	9%

Beam angle 50%	Field angle 10%	Cutoff angle 2,5%	Intensity ratio in 120° cone	Intensity ratio in 90° cone
50.5°	78.2°	96.5°	98.7%	95.9%

LAMPS (number of lamps)
50

Light planning Luminaire budgetary diagram



Luminaire budgetary diagram AREA m2 (area of the room) Coefficients of Utilization

Ceiling reflectance	80				70				50			30			10			0			
Wall reflectance	70	50	30	10	70	50	30	10	50	30	10	50	30	10	50	30	10	50	30	10	0
Floor reflectance	20	20	20	20	20	20	20	20	20	20	20	20	20	20	20	20	20	20	20	20	0
RCR	(RCR: Room Cavity Ratio) Room Values are expressed as percentage of Lumens delivered to the task surface																				
0	119	119	119	119	116	116	116	116	111	111	111	106	106	106	102	102	102	100	100	100	100
1	114	111	108	106	111	109	107	105	105	103	101	101	100	98	98	96	95	94	94	94	94
2	108	104	100	96	106	102	98	95	99	96	93	96	93	91	93	91	89	88	88	88	88
3	103	97	92	88	101	96	91	88	93	89	86	91	87	85	88	86	84	82	82	82	82
4	98	91	86	82	96	90	85	81	88	84	80	86	82	79	84	81	78	77	77	77	77
5	94	86	80	76	92	85	80	76	83	78	75	81	77	74	80	76	74	72	72	72	72
6	89	81	75	71	88	80	75	71	79	74	70	77	73	70	76	72	69	68	68	68	68
7	85	76	71	67	84	76	70	66	74	70	66	73	69	66	72	68	65	64	64	64	64
8	81	72	67	63	80	72	66	63	71	66	62	70	65	62	69	65	62	61	61	61	61
9	78	69	63	59	77	68	63	59	67	62	59	66	62	59	66	62	59	57	57	57	57
10	75	65	60	56	74	65	60	56	64	59	56	63	59	56	63	59	56	54	54	54	54

Zonal Lumen Summary

0°-10°	10°-20°	20°-30°	30°-40°	40°-50°	50°-60°	60°-70°	70°-80°	80°-90°
99.6 lm	255 lm	246 lm	116 lm	38.2 lm	9.32 lm	4.87 lm	2.78 lm	1.89 lm
90°-100°	100°-110°	110°-120°	120°-130°	130°-140°	140°-150°	150°-160°	160°-170°	170°-180°
0.000 lm	0.000 lm	0.000 lm	0.000 lm	0.000 lm	0.000 lm	0.000 lm	0.000 lm	0.000 lm

www.graffitilighting.com As a result of our continuous improvement, values are subject to change without notice. These are delivered results and can vary +/- 10% from published source data range.