

Light efficiency:

54 Lumen/Watt

Output: 791 lm

Light quality:

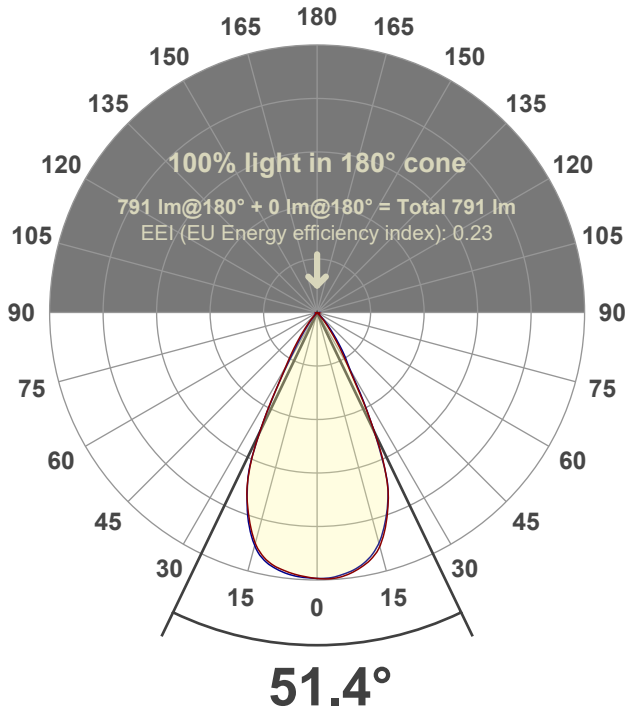
CRI: 96.1

Peak: 1170 cd

Power: 14.6 W



Beam angle



Test number:

GR-F-A14-3019-WF-SQ-Rev2

Luminaire Model:

Graffiti Regress Square Fixed Downlight-A14-3019 60° Optic

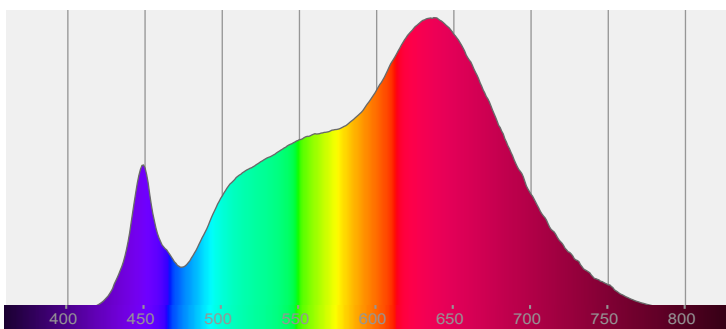
Date and time:

6/21/2022 9:29:49 PM

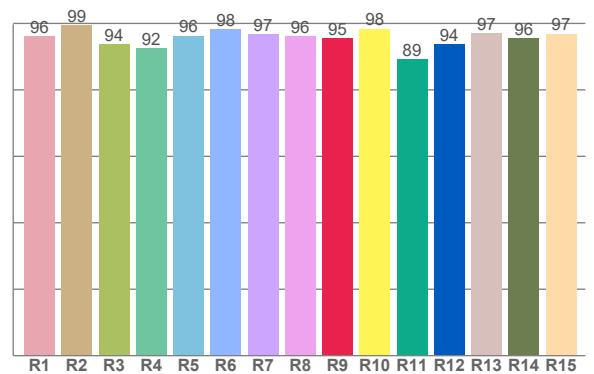
Delivered Lumens

791

Spectra



CRI: 96.1 (R1-R8)



Color parameters

	Color rendering index	Red component	Color fidelity	Color gamut	Color quality scale	Color coordinate cie 1931	Color coordinate cie 1931	Color coordinate	Color coordinate	Color deviation from black body
	CRI	CRI R9	TM30 R _f	TM30 R _g	CQS	x	y	u	v	Δuv
	96.1	95.4	95.2	104.4	94.9	0.435	0.401	0.250	0.347	-0.0009

R_f 95.2

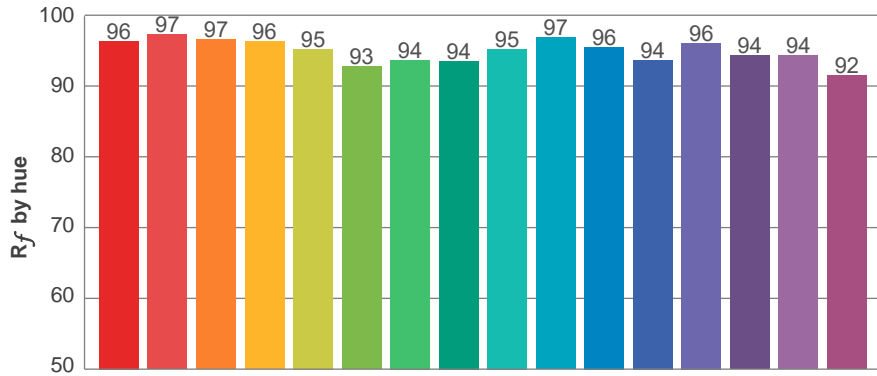
Fidelity index R_f

R_g 104.4

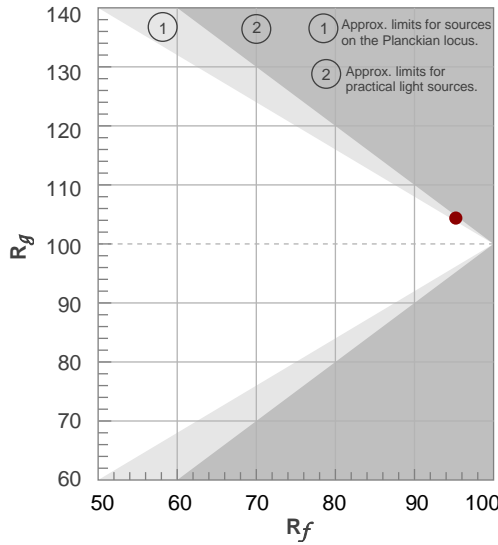
Gammut index R_g

TM30: 95.2

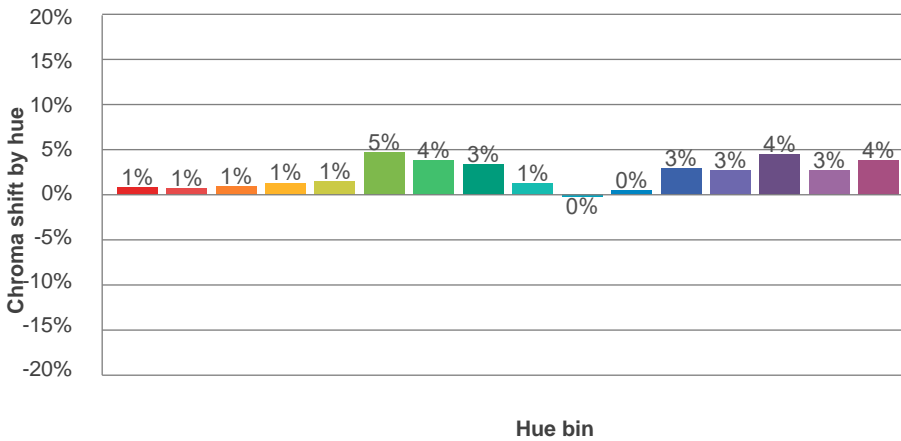
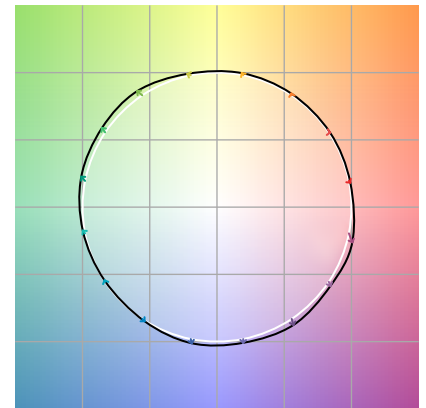
TM-30Color



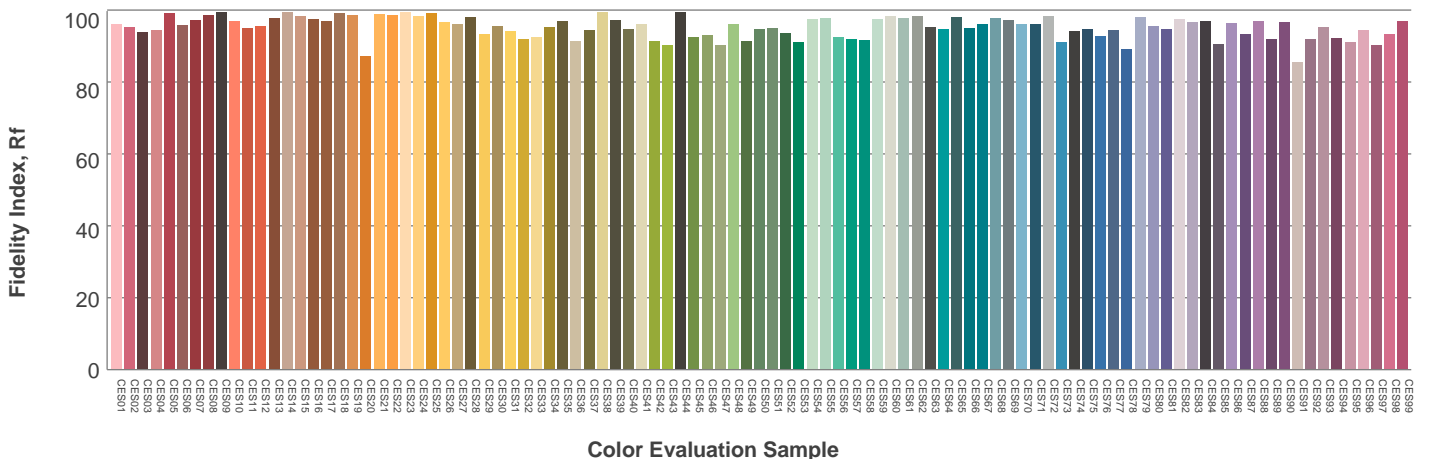
Hue Bin	R_f	Graphic shifts (%)	
		Chroma	Hue
1	96	1%	-1%
2	97	1%	-1%
3	97	1%	1%
4	96	1%	1%
5	95	1%	2%
6	93	5%	1%
7	94	4%	-1%
8	94	3%	-2%
9	95	1%	-2%
10	97	0%	-1%
11	96	0%	2%
12	94	3%	1%
13	96	3%	-1%
14	94	4%	-1%
15	94	3%	-2%
16	92	4%	-6%



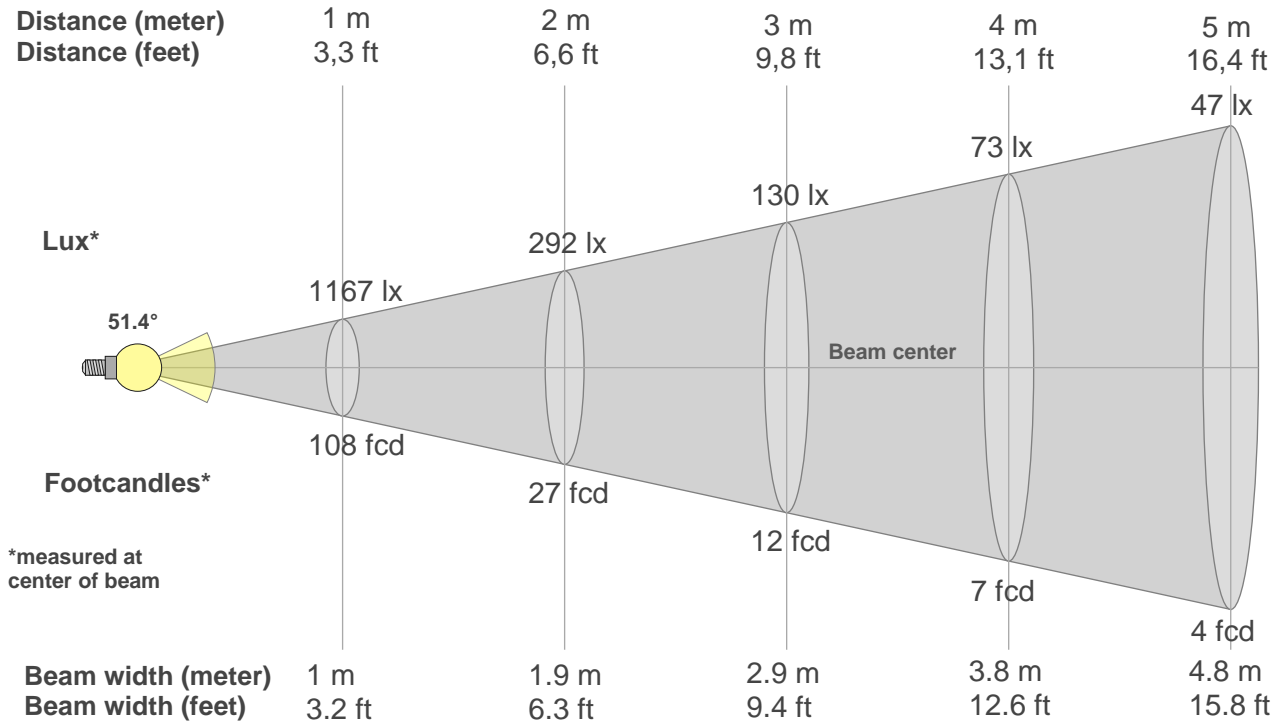
Color vector graphics



Color distortion



Beam details



Beam intensities from 1-20m

1m	2m	3m	4m	5m	6m	7m	8m	9m	10m	11m	12m	13m	14m	15m	16m	17m	18m	19m	20m
3.3ft	6.6ft	9.8ft	13.1ft	16.4ft	19.7ft	23ft	26.2ft	29.5ft	32.8ft	36.1ft	39.4ft	42.7ft	45.9ft	49.2ft	52.5ft	55.8ft	59.1ft	62.3ft	65.6ft
1167lx	292lx	130lx	73lx	47lx	32lx	24lx	18lx	14lx	12lx	10lx	8lx	7lx	6lx	5lx	5lx	4lx	4lx	3lx	3lx
108.4fcd	27.1fcd	12fcd	6.8fcd	4.3fcd	3fcd	2.2fcd	1.7fcd	1.3fcd	1.1fcd	0.9fcd	0.8fcd	0.6fcd	0.6fcd	0.5fcd	0.4fcd	0.4fcd	0.3fcd	0.3fcd	0.3fcd

Intensities in 0° c-plane

0°	2°	4°	6°	8°	10°	12°	14°	16°	18°	20°	22°	24°	26°	28°	30°	32°	34°	36°	38°
1167	1170	1168	1161	1149	1133	1113	1082	1036	978	909	831	713	561	407	283	212	157	113	79
100%	100%	100%	99%	98%	97%	95%	93%	89%	84%	78%	71%	61%	48%	35%	24%	18%	13%	10%	7%

Intensities in 90° c-plane

0°	2°	4°	6°	8°	10°	12°	14°	16°	18°	20°	22°	24°	26°	28°	30°	32°	34°	36°	38°
1167	1166	1162	1153	1142	1125	1101	1068	1024	968	904	825	705	561	422	297	244	194	149	111
100%	100%	100%	99%	98%	96%	94%	91%	88%	83%	77%	71%	60%	48%	36%	25%	21%	17%	13%	9%

Intensities in 180° c-plane

0°	2°	4°	6°	8°	10°	12°	14°	16°	18°	20°	22°	24°	26°	28°	30°	32°	34°	36°	38°
1167	1162	1156	1148	1138	1125	1103	1069	1021	961	895	821	709	561	410	288	218	163	119	85
100%	100%	99%	98%	97%	96%	94%	92%	87%	82%	77%	70%	61%	48%	35%	25%	19%	14%	10%	7%

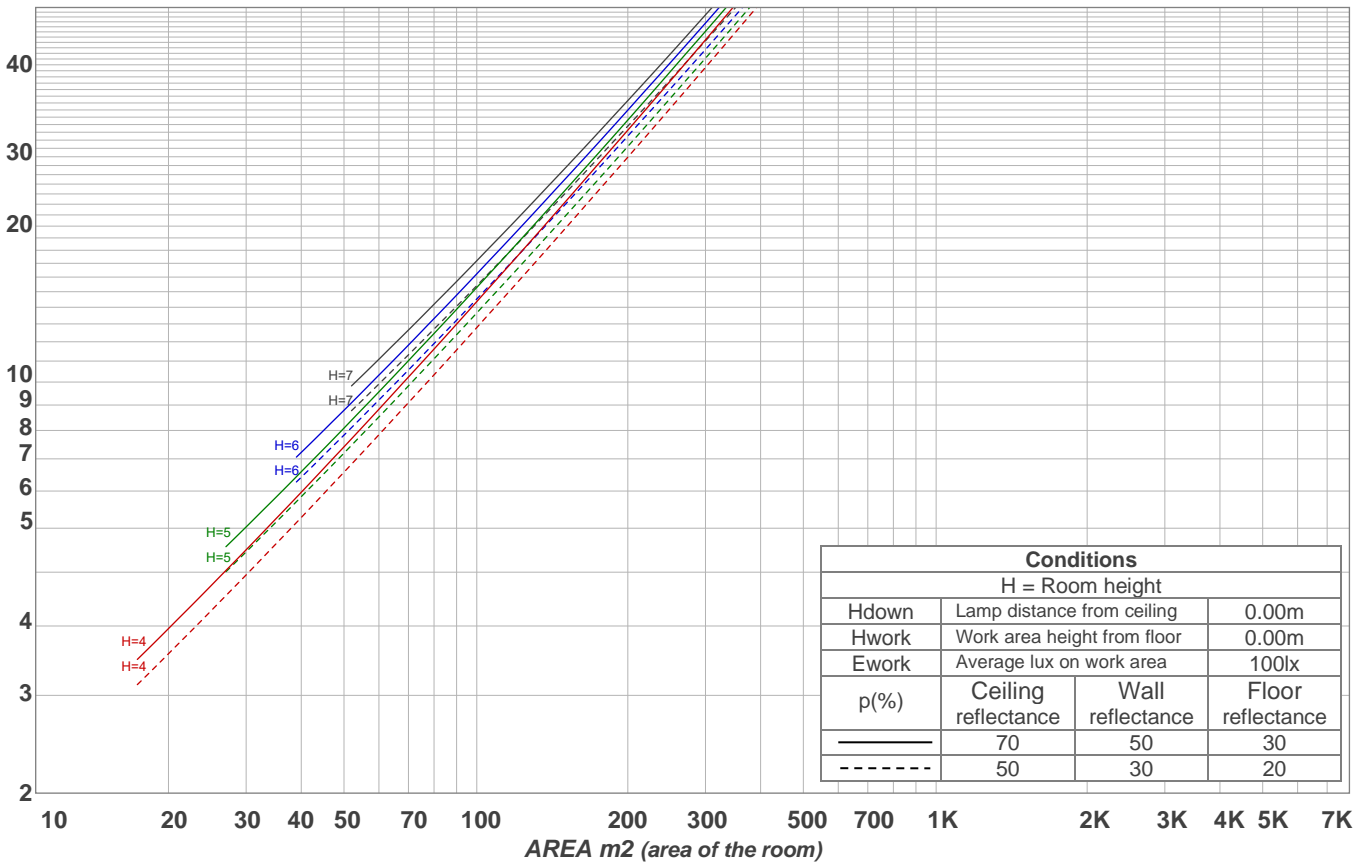
Intensities in 270° c-plane

0°	2°	4°	6°	8°	10°	12°	14°	16°	18°	20°	22°	24°	26°	28°	30°	32°	34°	36°	38°
1167	1165	1163	1156	1146	1132	1112	1082	1033	972	899	815	714	558	398	268	177	119	77	53
100%	100%	100%	99%	98%	97%	95%	93%	88%	83%	77%	70%	61%	48%	34%	23%	15%	10%	7%	5%

Beam angle 50%	Field angle 10%	Cutoff angle 2,5%	Intensity ratio in 120° cone	Intensity ratio in 90° cone
51.4°	71.8°	85.9°	99.3%	98.6%

LAMPS (number of lamps)
50

Light planning Luminaire budgetary diagram



Luminaire budgetary diagram AREA m2 (area of the room) Coefficients of Utilization

Ceiling reflectance	80				70				50			30			10			0			
Wall reflectance	70	50	30	10	70	50	30	10	50	30	10	50	30	10	50	30	10	50	30	10	0
Floor reflectance	20	20	20	20	20	20	20	20	20	20	20	20	20	20	20	20	20	20	20	20	0
RCR	(RCR: Room Cavity Ratio)																				
	Room Values are expressed as percentage of Lumens delivered to the task surface																				
0	119	119	119	119	116	116	116	116	111	111	111	106	106	106	102	102	102	100	100	100	
1	114	111	109	107	112	109	107	105	105	104	102	102	100	99	98	97	96	94	94	94	
2	109	105	101	98	107	103	100	97	100	97	95	97	95	93	94	92	91	89	89	89	
3	104	98	94	90	102	97	93	90	95	91	88	92	89	87	90	88	86	84	84	84	
4	100	93	88	84	98	92	87	84	90	86	83	88	84	82	86	83	81	79	79	79	
5	95	88	83	79	94	87	82	78	85	81	78	84	80	77	82	79	76	75	75	75	
6	91	83	78	74	90	83	78	74	81	77	73	80	76	73	79	75	72	71	71	71	
7	87	79	74	70	86	79	73	70	77	73	69	76	72	69	75	71	69	67	67	67	
8	84	75	70	66	83	75	70	66	74	69	66	73	69	66	72	68	65	64	64	64	
9	80	72	66	63	79	71	66	63	70	66	63	70	65	62	69	65	62	61	61	61	
10	77	68	63	60	76	68	63	60	67	63	60	67	62	59	66	62	59	58	58	58	

Zonal Lumen Summary

0°-10°	10°-20°	20°-30°	30°-40°	40°-50°	50°-60°	60°-70°	70°-80°	80°-90°
110 lm	292 lm	277 lm	88.6 lm	16.9 lm	1.97 lm	2.22 lm	1.80 lm	1.51 lm
90°-100°	100°-110°	110°-120°	120°-130°	130°-140°	140°-150°	150°-160°	160°-170°	170°-180°
0.000 lm	0.000 lm	0.000 lm	0.000 lm	0.000 lm	0.000 lm	0.000 lm	0.000 lm	0.000 lm