

Light efficiency:



Output: 898 lm

Light quality:

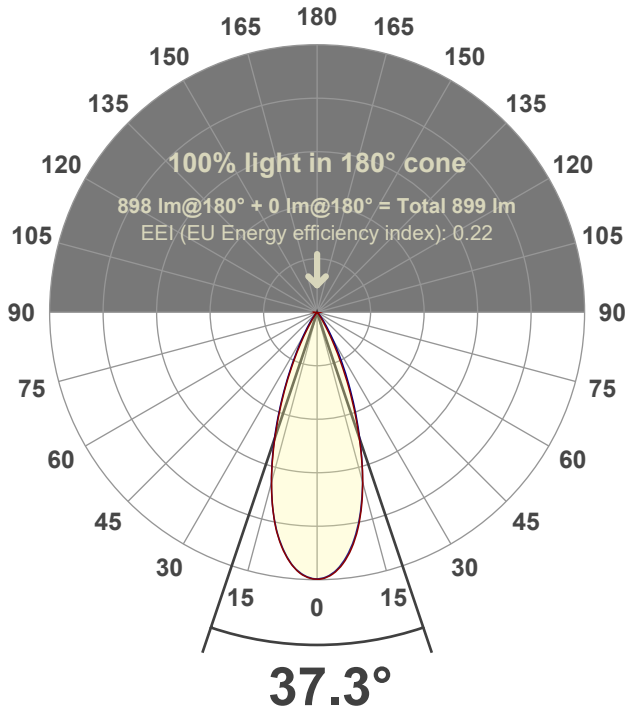


Peak: 2130 cd

Power: 15.0 W



Beam angle



Test number:

GR-F-A14-3022-FL-SQ-91A-Rev2

Luminaire Model:

Graffiti Regress Square Fixed Downlight-A14-3022 38° Optic-Solite

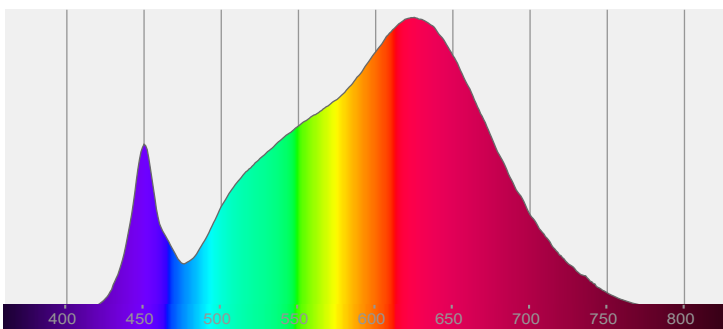
Date and time:

6/30/2022 4:35:10 PM

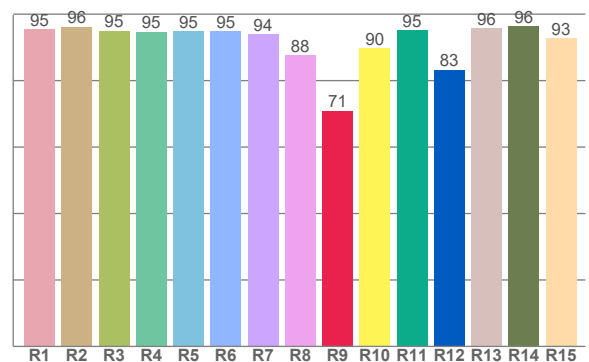
Delivered Lumens

898

Spectra



CRI: 94.1 (R1-R8)



Color parameters

Color rendering index	Red component	Color fidelity	Color gamut	Color quality scale	Color coordinate cie 1931	Color coordinate cie 1931	Color coordinate	Color coordinate	Color divition from black body
CRI	CRI R9	TM30 R <sub>f</sub>	TM30 R <sub>g</sub>	CQS	x	y	u	v	Δuv
94.1	70.9	91.8	102.5	91.0	0.436	0.399	0.252	0.346	-0.0018

**$R_f$  91.8**

Fidelity index  $R_f$

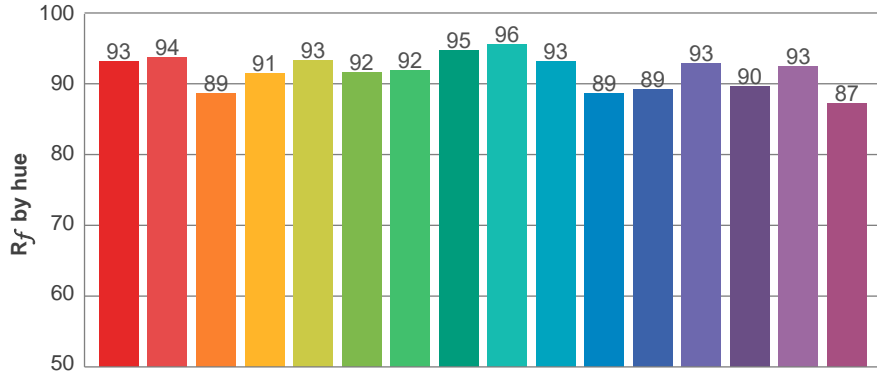
---

**$R_g$  102.5**

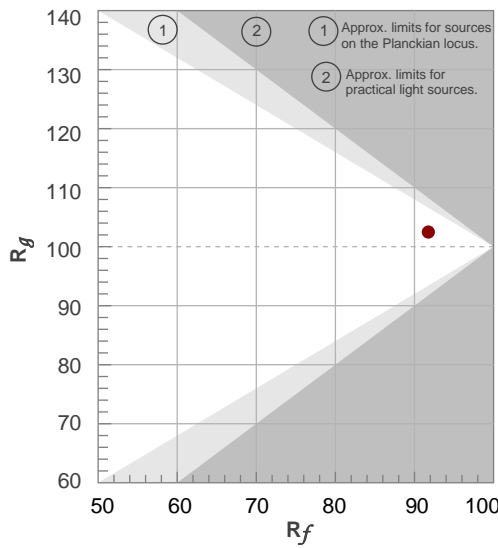
Gammut index  $R_g$

TM30: 91.8

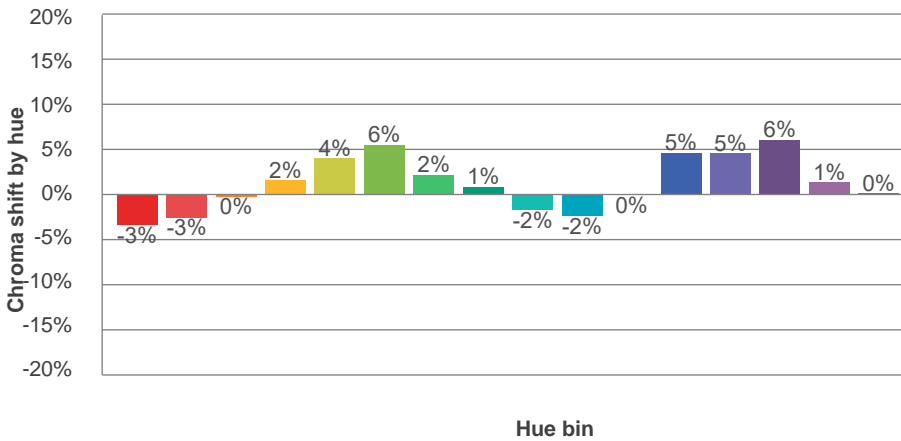
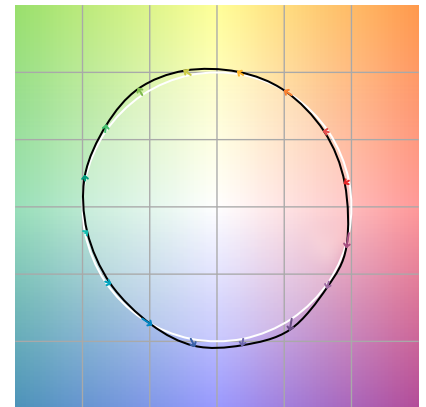
TM-30Color



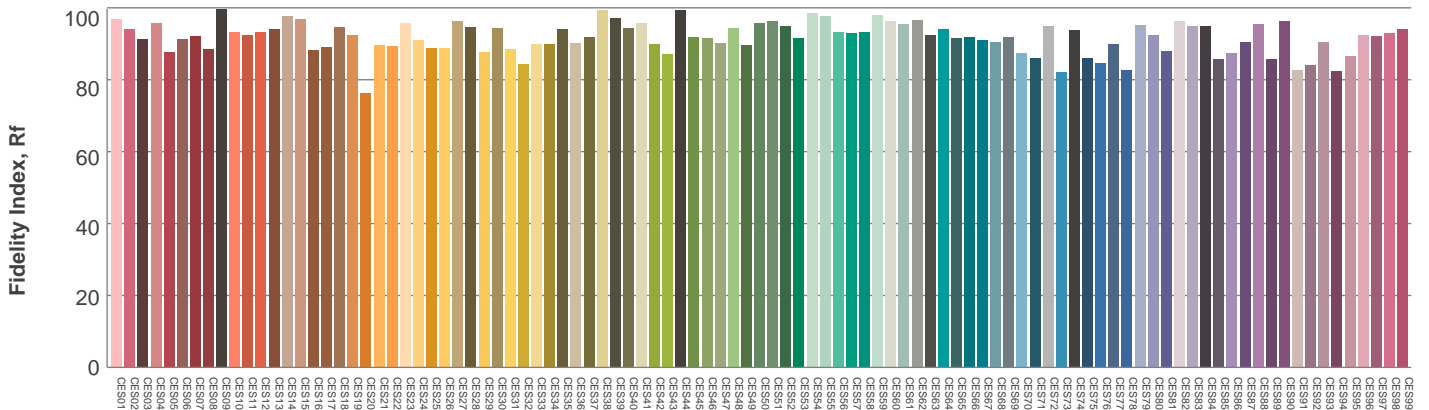
Hue Bin	$R_f$	Graphic shifts (%)	
		Chroma	Hue
1	93	-3%	-1%
2	94	-3%	2%
3	89	0%	6%
4	91	2%	4%
5	93	4%	4%
6	92	6%	0%
7	92	2%	-4%
8	95	1%	-3%
9	96	-2%	-1%
10	93	-2%	3%
11	89	0%	8%
12	89	5%	4%
13	93	5%	-2%
14	90	6%	-6%
15	93	1%	-4%
16	87	0%	-10%



Color vector graphics



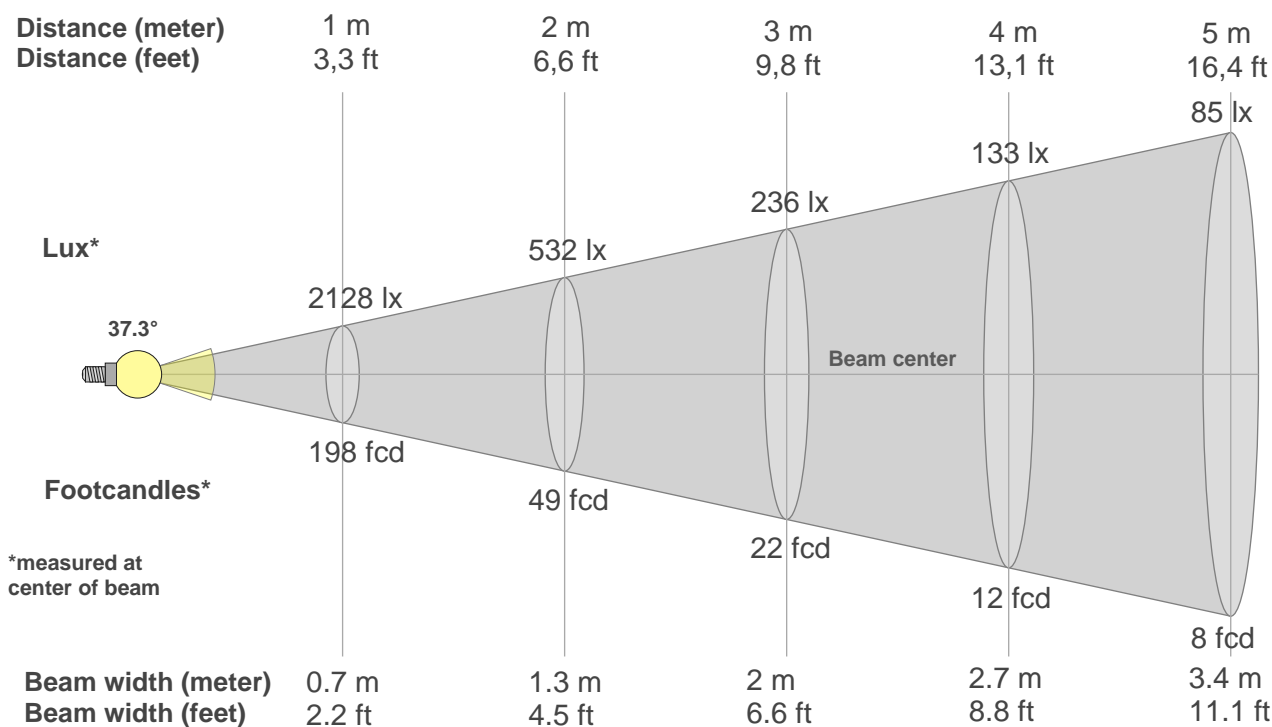
Color distortion



Color Evaluation Sample

[www.graffitilighting.com](http://www.graffitilighting.com) As a result of our continuous improvement, values are subject to change without notice. These are delivered results and can vary +/- 10% from published source data range.

### Beam details



#### Beam intensities from 1-20m

1m	2m	3m	4m	5m	6m	7m	8m	9m	10m	11m	12m	13m	14m	15m	16m	17m	18m	19m	20m
3.3ft	6.6ft	9.8ft	13.1ft	16.4ft	19.7ft	23ft	26.2ft	29.5ft	32.8ft	36.1ft	39.4ft	42.7ft	45.9ft	49.2ft	52.5ft	55.8ft	59.1ft	62.3ft	65.6ft
2128lx	532lx	236lx	133lx	85lx	59lx	43lx	33lx	26lx	21lx	18lx	15lx	13lx	11lx	9lx	8lx	7lx	7lx	6lx	5lx
197.7fc	49.4fcd	22fcd	12.4fcd	7.9fcd	5.5fcd	4fcd	3.1fcd	2.4fcd	2fcd	1.6fcd	1.4fcd	1.2fcd	1fcd	0.9fcd	0.8fcd	0.7fcd	0.6fcd	0.5fcd	0.5fcd

#### Intensities in 0° c-plane

0°	2°	4°	6°	8°	10°	12°	14°	16°	18°	20°	22°	24°	26°	28°	30°	32°	34°	36°	38°
2128	2116	2078	2015	1922	1803	1661	1498	1318	1121	924	738	564	409	281	188	128	87	60	42
100%	99%	98%	95%	90%	85%	78%	70%	62%	53%	43%	35%	27%	19%	13%	9%	6%	4%	3%	2%

#### Intensities in 90° c-plane

0°	2°	4°	6°	8°	10°	12°	14°	16°	18°	20°	22°	24°	26°	28°	30°	32°	34°	36°	38°
2128	2115	2071	2000	1906	1790	1652	1491	1315	1131	950	778	619	480	363	269	196	141	103	77
100%	99%	97%	94%	90%	84%	78%	70%	62%	53%	45%	37%	29%	23%	17%	13%	9%	7%	5%	4%

#### Intensities in 180° c-plane

0°	2°	4°	6°	8°	10°	12°	14°	16°	18°	20°	22°	24°	26°	28°	30°	32°	34°	36°	38°
2128	2118	2082	2016	1924	1808	1666	1500	1317	1121	926	741	570	416	286	194	130	86	58	40
100%	99%	98%	95%	90%	85%	78%	70%	62%	53%	44%	35%	27%	20%	13%	9%	6%	4%	3%	2%

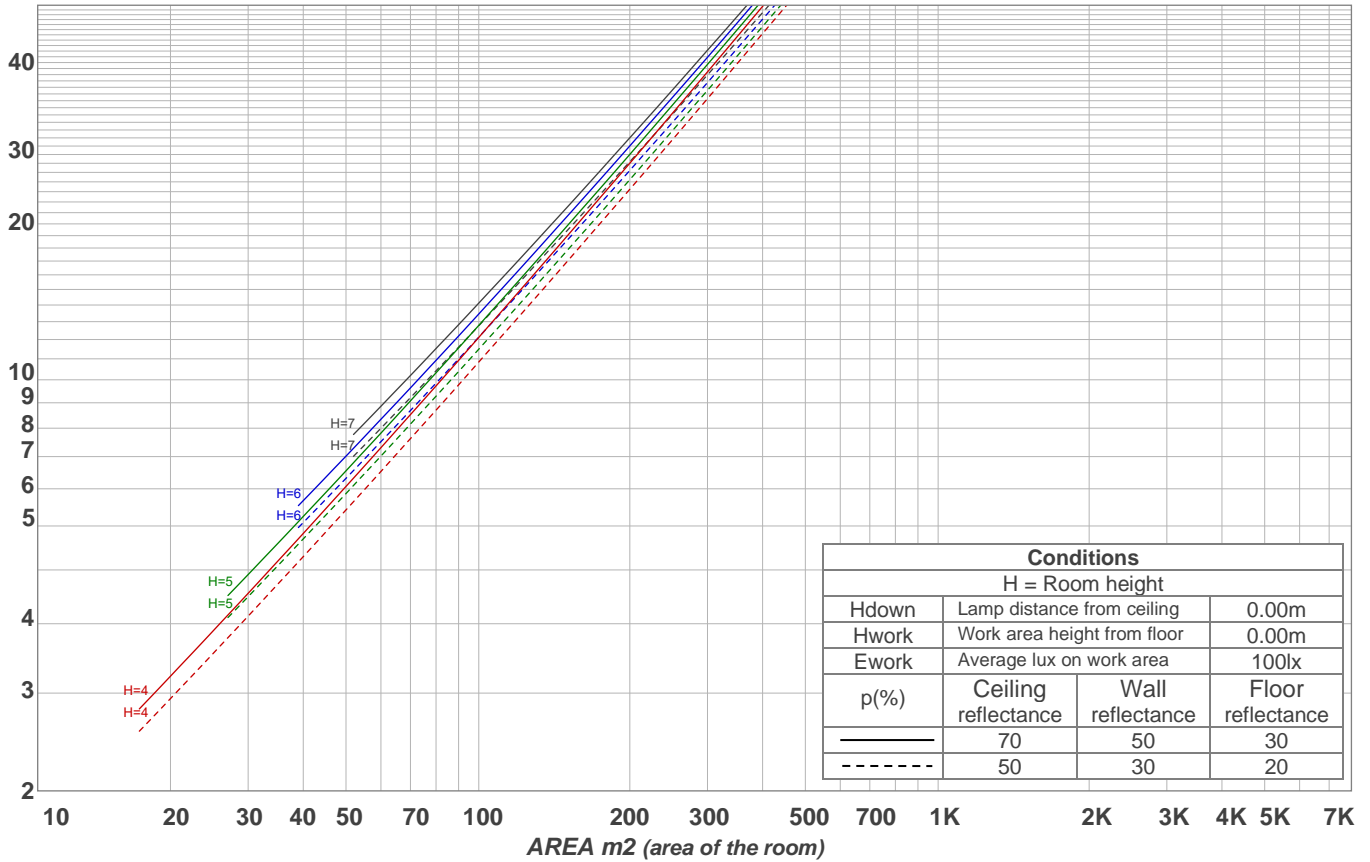
#### Intensities in 270° c-plane

0°	2°	4°	6°	8°	10°	12°	14°	16°	18°	20°	22°	24°	26°	28°	30°	32°	34°	36°	38°
2128	2113	2074	2010	1919	1806	1663	1499	1320	1133	944	762	597	453	334	242	175	129	96	70
100%	99%	97%	94%	90%	85%	78%	70%	62%	53%	44%	36%	28%	21%	16%	11%	8%	6%	4%	3%

Beam angle 50%	Field angle 10%	Cutoff angle 2,5%	Intensity ratio in 120° cone	Intensity ratio in 90° cone
37.3°	60.7°	76.7°	99.1%	97.9%

LAMPS (number of lamps)  
50

### Light planning Luminaire budgetary diagram



### Luminaire budgetary diagram AREA m2 (area of the room) Coefficients of Utilization

Ceiling reflectance	80				70				50			30			10			0			
Wall reflectance	70	50	30	10	70	50	30	10	50	30	10	50	30	10	50	30	10	50	30	10	0
Floor reflectance	20	20	20	20	20	20	20	20	20	20	20	20	20	20	20	20	20	20	20	20	0
RCR	(RCR: Room Cavity Ratio)																				
	Room Values are expressed as percentage of Lumens delivered to the task surface																				
0	119	119	119	119	116	116	116	116	111	111	111	106	106	106	102	102	102	100	100	100	
1	114	112	110	108	112	110	108	106	106	104	103	102	101	100	99	98	97	95	95	95	
2	110	106	102	99	108	104	101	98	101	98	96	98	96	94	95	93	92	90	90	90	
3	105	100	96	92	104	99	95	92	96	93	90	94	91	89	92	89	88	86	86	86	
4	101	95	90	87	100	94	90	86	92	88	85	90	87	84	88	86	84	82	82	82	
5	98	91	86	82	96	90	85	82	88	84	81	86	83	80	85	82	80	79	79	79	
6	94	87	82	78	93	86	81	78	84	80	77	83	80	77	82	79	76	75	75	75	
7	90	83	78	74	89	82	78	74	81	77	74	80	76	73	79	76	73	72	72	72	
8	87	79	74	71	86	79	74	71	78	74	71	77	73	70	76	73	70	69	69	69	
9	84	76	71	68	83	76	71	68	75	71	68	74	70	68	73	70	67	66	66	66	
10	81	73	69	65	80	73	68	65	72	68	65	72	68	65	71	67	65	64	64	64	

### Zonal Lumen Summary

0°-10°	10°-20°	20°-30°	30°-40°	40°-50°	50°-60°	60°-70°	70°-80°	80°-90°
188 lm	382 lm	236 lm	64.0 lm	15.7 lm	5.41 lm	3.52 lm	2.12 lm	2.04 lm

90°-100°	100°-110°	110°-120°	120°-130°	130°-140°	140°-150°	150°-160°	160°-170°	170°-180°
0.000 lm	0.000 lm	0.000 lm	0.000 lm	0.000 lm	0.000 lm	0.000 lm	0.000 lm	0.000 lm