

Light efficiency:



Output: 869 lm

Light quality:

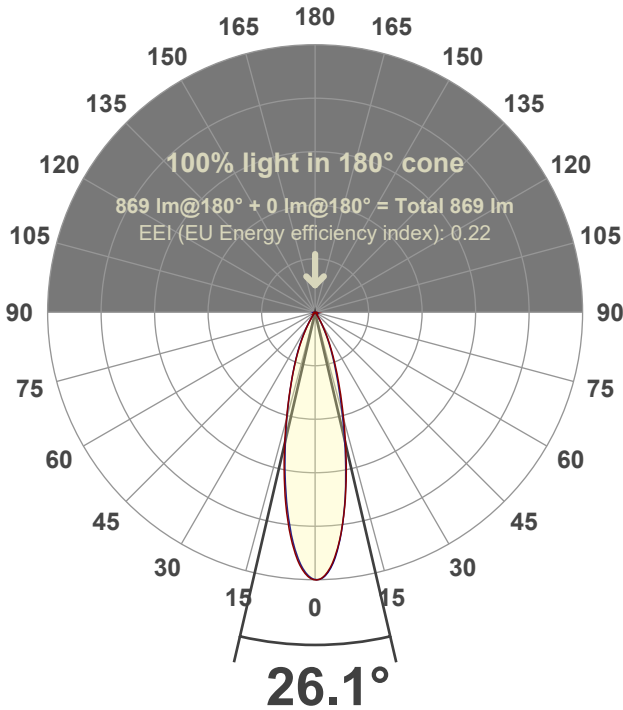


Peak: 3170 cd

Power: 15.0 W



Beam angle



Test number:

GR-F-A14-3022-NF-RD-91A-Rev2

Luminaire Model:

Graffiti Regress Round Fixed Downlight-A14-3022 24° Optic-Solite

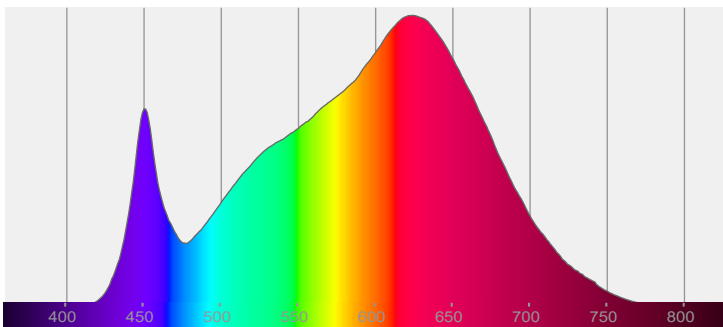
Date and time:

3/24/2022 4:29:04 PM

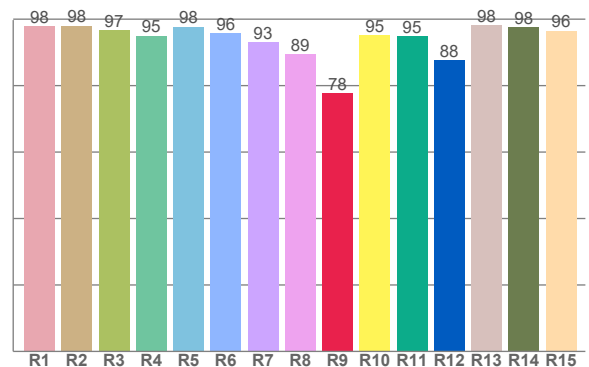
Delivered Lumens

869

Spectra



CRI: 95.4 (R1-R8)



Color parameters

Color rendering index	Red component	Color fidelity	Color gamut	Color quality scale	Color coordinate cie 1931	Color coordinate cie 1931	Color coordinate	Color coordinate	Color divition from black body
CRI	CRI R9	TM30 R _f	TM30 R _g	CQS	x	y	u	v	Δuv
95.4	77.7	91.8	103.8	90.7	0.423	0.383	0.250	0.341	-0.0064

R_f 91.8

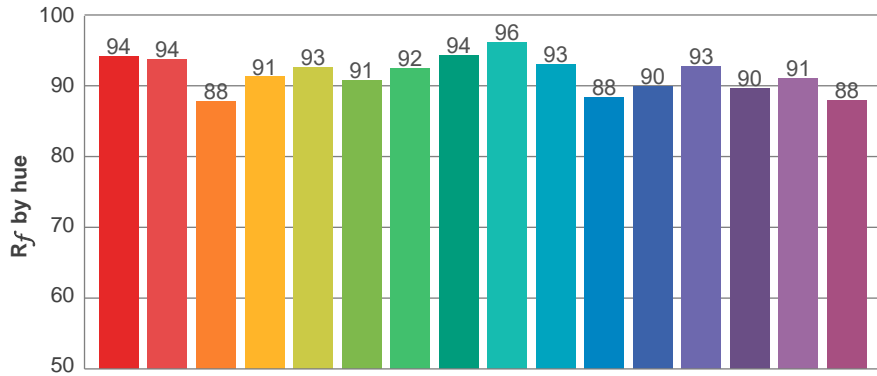
Fidelity index R_f

R_g 103.8

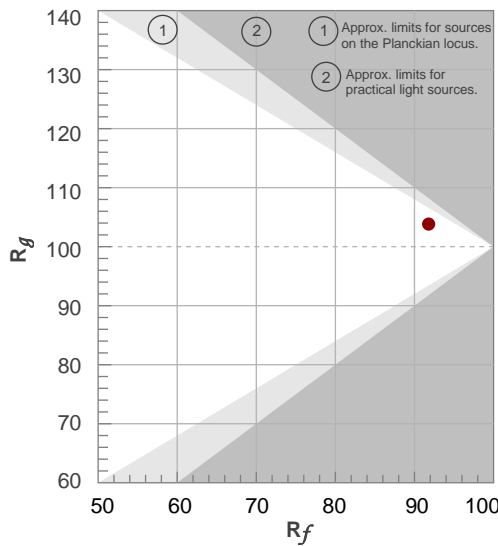
Gammut index R_g

TM30: 91.8

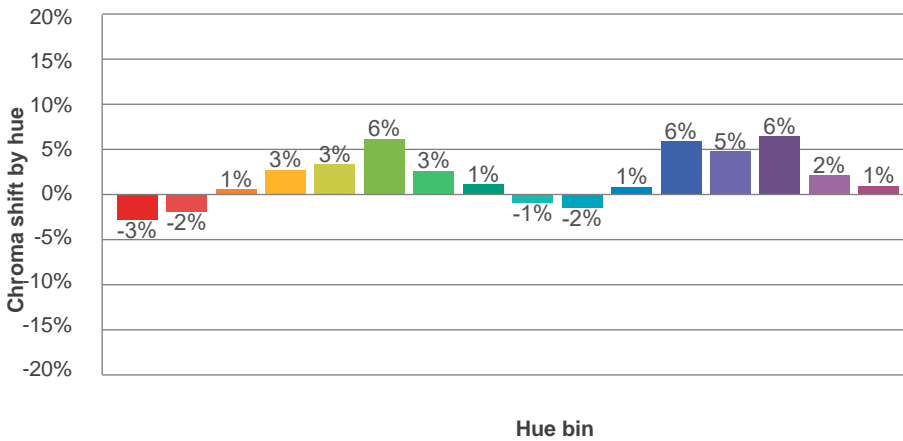
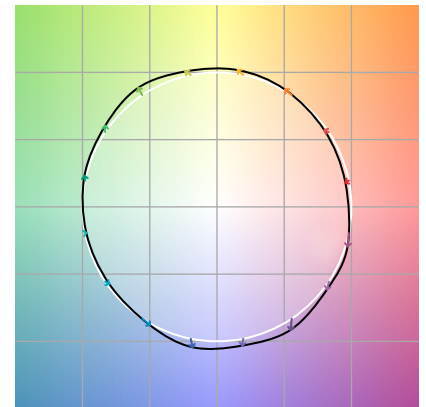
TM-30Color



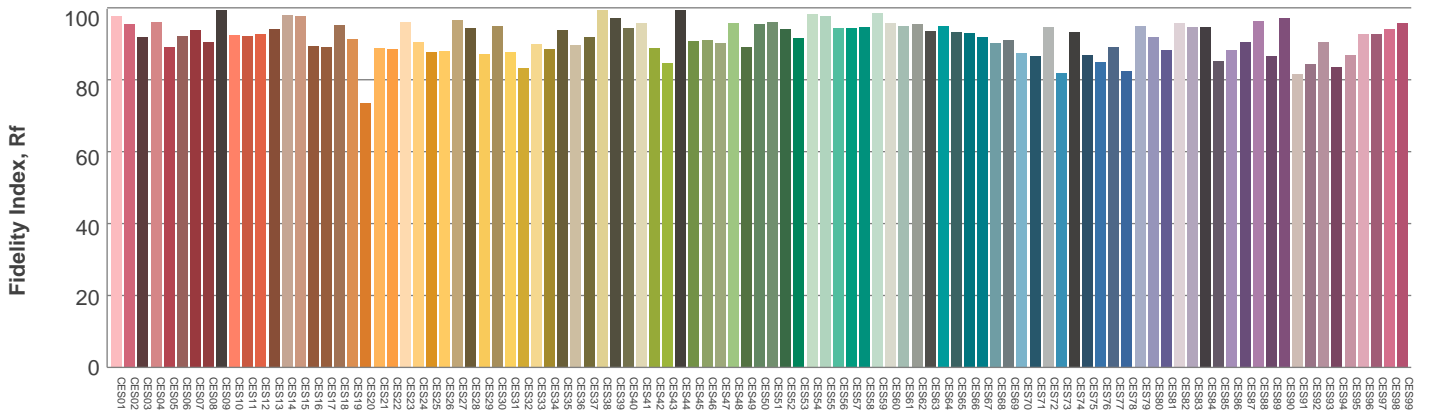
Hue Bin	R _f	Graphic shifts (%)	
		Chroma	Hue
1	94	-3%	-1%
2	94	-2%	3%
3	88	1%	6%
4	91	3%	5%
5	93	3%	3%
6	91	6%	0%
7	92	3%	-4%
8	94	1%	-3%
9	96	-1%	0%
10	93	-2%	3%
11	88	1%	8%
12	90	6%	3%
13	93	5%	-2%
14	90	6%	-5%
15	91	2%	-6%
16	88	1%	-10%



Color vector graphics



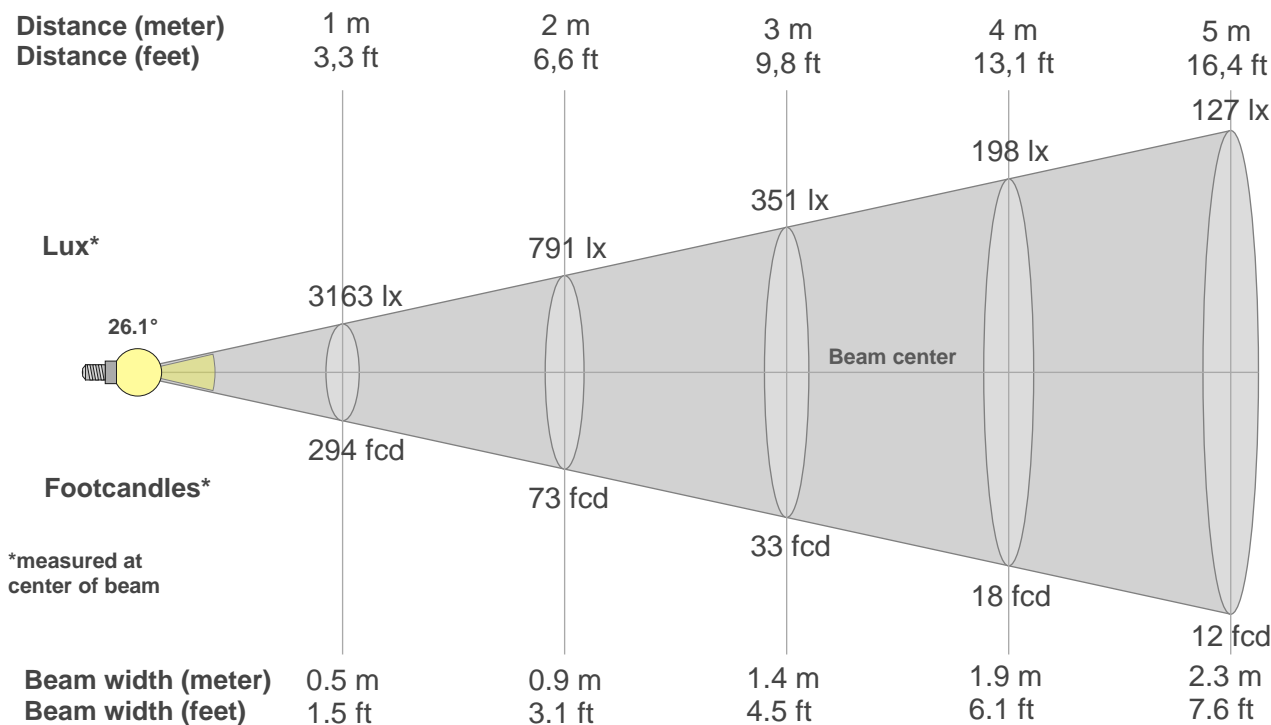
Color distortion



Color Evaluation Sample

www.graffitilighting.com As a result of our continuous improvement, values are subject to change without notice. These are delivered results and can vary +/- 10% from published source data range.

Beam details



Beam intensities from 1-20m

1m	2m	3m	4m	5m	6m	7m	8m	9m	10m	11m	12m	13m	14m	15m	16m	17m	18m	19m	20m
3.3ft	6.6ft	9.8ft	13.1ft	16.4ft	19.7ft	23ft	26.2ft	29.5ft	32.8ft	36.1ft	39.4ft	42.7ft	45.9ft	49.2ft	52.5ft	55.8ft	59.1ft	62.3ft	65.6ft
3163lx	791lx	351lx	198lx	127lx	88lx	65lx	49lx	39lx	32lx	26lx	22lx	19lx	16lx	14lx	12lx	11lx	10lx	9lx	8lx
293.8fcd	73.5fcd	32.6fcd	18.4fcd	11.8fcd	8.2fcd	6fcd	4.6fcd	3.6fcd	2.9fcd	2.4fcd	2fcd	1.7fcd	1.5fcd	1.3fcd	1.1fcd	1fcd	0.9fcd	0.8fcd	0.7fcd

Intensities in 0° c-plane

0°	2°	4°	6°	8°	10°	12°	14°	16°	18°	20°	22°	24°	26°	28°	30°	32°	34°	36°	38°
3163	3120	2978	2742	2442	2116	1784	1466	1183	952	757	594	458	344	252	180	124	84	56	40
100%	99%	94%	87%	77%	67%	56%	46%	37%	30%	24%	19%	14%	11%	8%	6%	4%	3%	2%	1%

Intensities in 90° c-plane

0°	2°	4°	6°	8°	10°	12°	14°	16°	18°	20°	22°	24°	26°	28°	30°	32°	34°	36°	38°
3163	3143	2990	2743	2436	2093	1737	1405	1124	892	703	550	423	314	223	151	98	65	44	31
100%	99%	95%	87%	77%	66%	55%	44%	36%	28%	22%	17%	13%	10%	7%	5%	3%	2%	1%	1%

Intensities in 180° c-plane

0°	2°	4°	6°	8°	10°	12°	14°	16°	18°	20°	22°	24°	26°	28°	30°	32°	34°	36°	38°
3163	3104	2954	2711	2415	2096	1775	1468	1194	971	783	624	487	370	273	196	135	91	60	43
100%	98%	93%	86%	76%	66%	56%	46%	38%	31%	25%	20%	15%	12%	9%	6%	4%	3%	2%	1%

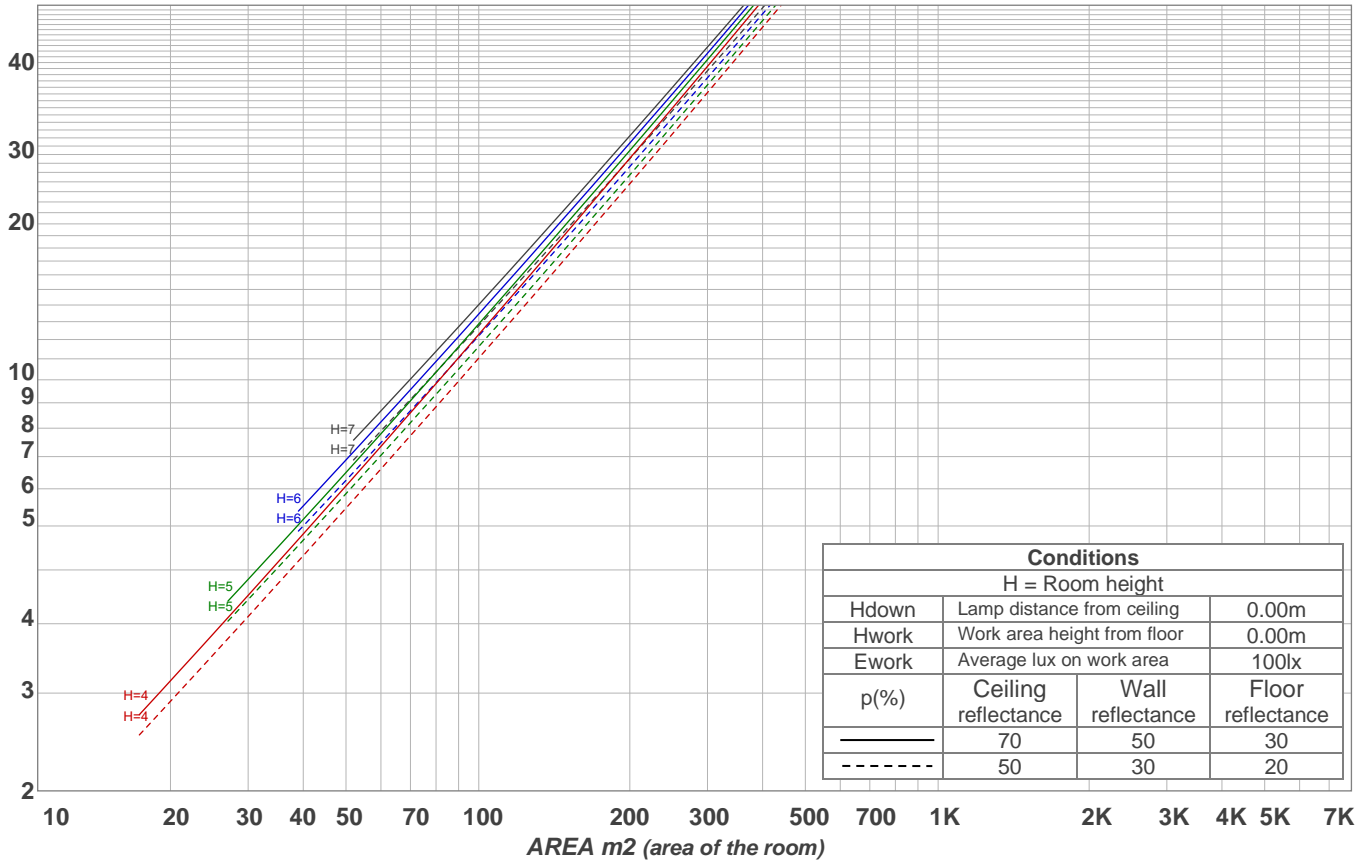
Intensities in 270° c-plane

0°	2°	4°	6°	8°	10°	12°	14°	16°	18°	20°	22°	24°	26°	28°	30°	32°	34°	36°	38°
3163	3084	2914	2668	2367	2043	1728	1437	1179	955	779	632	504	391	288	203	138	90	58	38
100%	98%	92%	84%	75%	65%	55%	45%	37%	30%	25%	20%	16%	12%	9%	6%	4%	3%	2%	1%

Beam angle 50%	Field angle 10%	Cutoff angle 2,5%	Intensity ratio in 120° cone	Intensity ratio in 90° cone
26.1°	53.5°	68.4°	98.9%	97.9%

LAMPS (number of lamps)
50

Light planning Luminaire budgetary diagram



Luminaire budgetary diagram AREA m2 (area of the room) Coefficients of Utilization

Ceiling reflectance	80				70				50			30			10			0			
Wall reflectance	70	50	30	10	70	50	30	10	50	30	10	50	30	10	50	30	10	50	30	10	0
Floor reflectance	20	20	20	20	20	20	20	20	20	20	20	20	20	20	20	20	20	20	20	20	0
RCR	(RCR: Room Cavity Ratio) Room Values are expressed as percentage of Lumens delivered to the task surface																				
0	119	119	119	119	116	116	116	116	111	111	111	106	106	106	102	102	102	100	100	100	
1	115	112	110	108	112	110	108	106	106	105	103	102	101	100	99	98	97	96	96	96	
2	110	106	103	100	108	105	102	99	101	99	97	99	97	95	96	94	93	91	91	91	
3	106	101	97	94	104	100	96	93	97	94	92	95	92	90	93	91	89	88	88	88	
4	103	97	92	89	101	96	92	88	93	90	87	92	89	86	90	87	85	84	84	84	
5	99	93	88	85	98	92	87	84	90	86	84	88	85	83	87	84	82	81	81	81	
6	96	89	84	81	94	88	84	81	87	83	80	85	82	80	84	81	79	78	78	78	
7	93	85	81	78	91	85	81	77	84	80	77	83	79	77	82	79	76	75	75	75	
8	90	82	78	75	89	82	78	75	81	77	74	80	77	74	79	76	74	73	73	73	
9	87	80	75	72	86	79	75	72	78	74	72	78	74	71	77	74	71	70	70	70	
10	84	77	73	70	83	77	72	69	76	72	69	75	72	69	75	71	69	68	68	68	

Zonal Lumen Summary

0°-10°	10°-20°	20°-30°	30°-40°	40°-50°	50°-60°	60°-70°	70°-80°	80°-90°
247 lm	360 lm	189 lm	47.6 lm	11.1 lm	5.18 lm	3.73 lm	2.75 lm	2.75 lm

90°-100°	100°-110°	110°-120°	120°-130°	130°-140°	140°-150°	150°-160°	160°-170°	170°-180°
0.000 lm	0.000 lm	0.000 lm	0.000 lm	0.000 lm	0.000 lm	0.000 lm	0.000 lm	0.000 lm