

Light efficiency:



Output: 925 lm

Light quality:

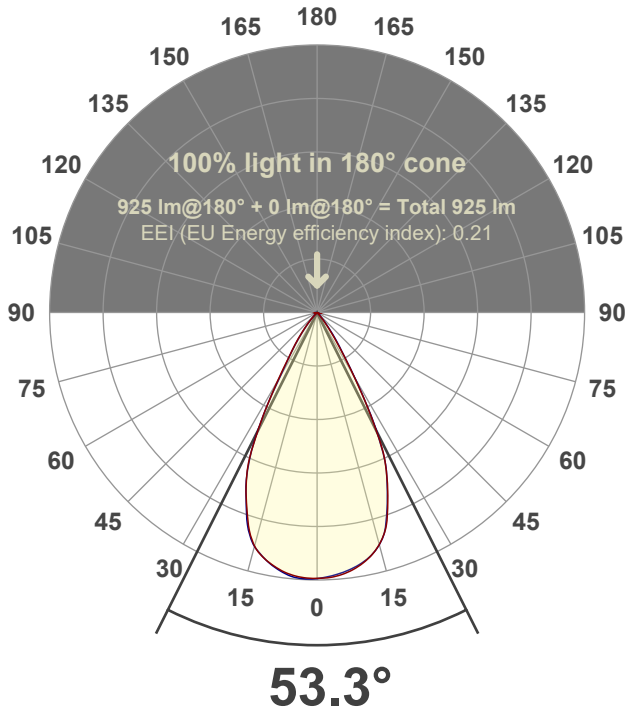


Peak: 1308 cd

Power: 15.0 W



Beam angle



Test number:

GR-F-A14-3022-WF-RD-Rev2

Luminaire Model:

Graffiti Regress Round Fixed Downlight-A14-3022 60° Optic

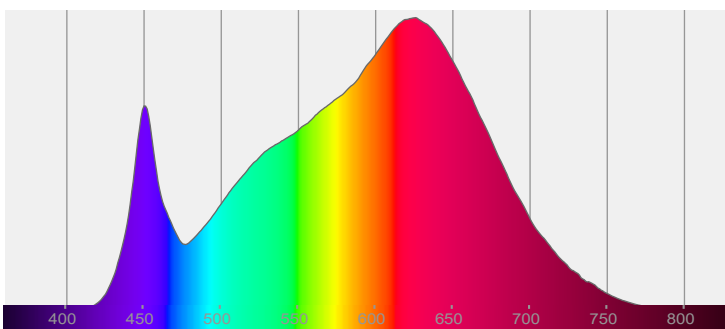
Date and time:

3/24/2022 5:43:56 PM

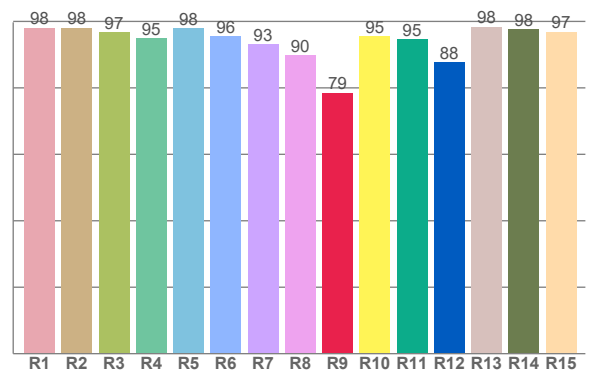
Delivered Lumens

925

Spectra



CRI: 95.5 (R1-R8)



Color parameters

	Color rendering index	Red component	Color fidelity	Color gamut	Color quality scale	Color coordinate cie 1931	Color coordinate cie 1931	Color coordinate	Color coordinate	Color deviation from black body
	CRI	CRI R9	TM30 R <sub>f</sub>	TM30 R <sub>g</sub>	CQS	x	y	u	v	Δuv
	95.5	78.5	91.8	103.9	90.7	0.421	0.382	0.250	0.340	-0.0069

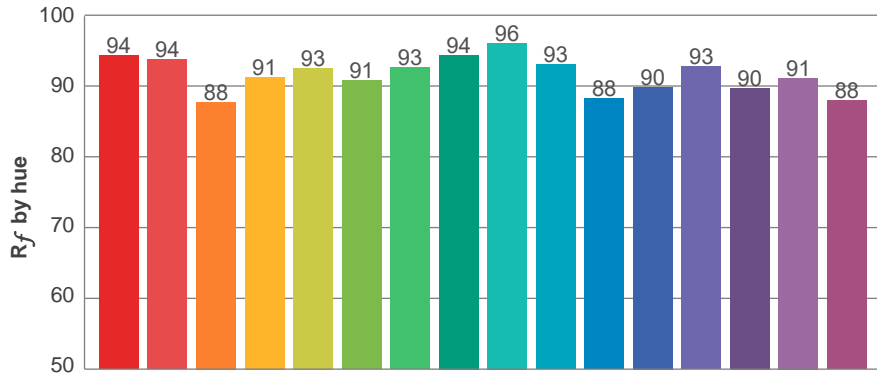
**$R_f$  91.8**  
Fidelity index  $R_f$

---

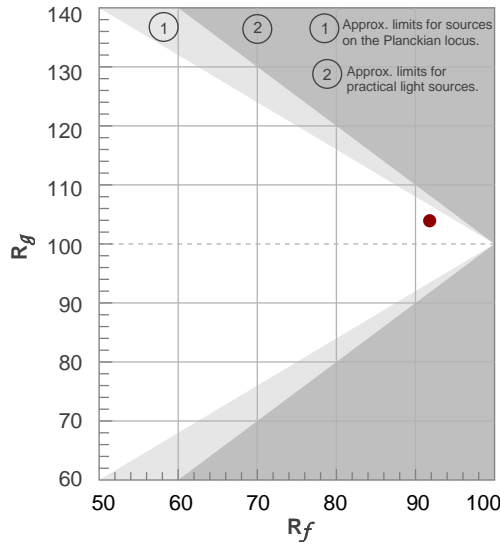
**$R_g$  103.9**  
Gammut index  $R_g$

TM30: 91.8

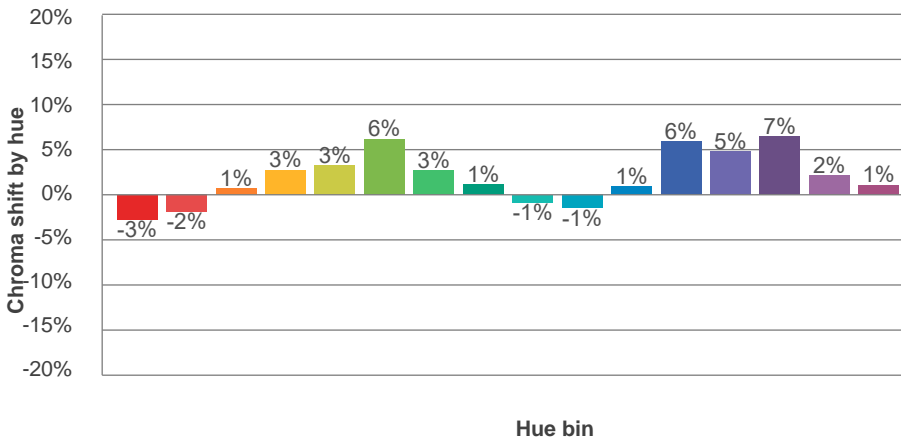
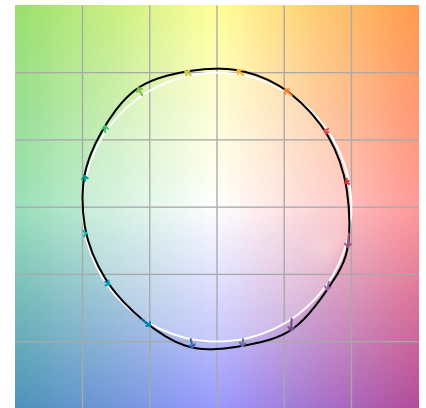
TM-30Color



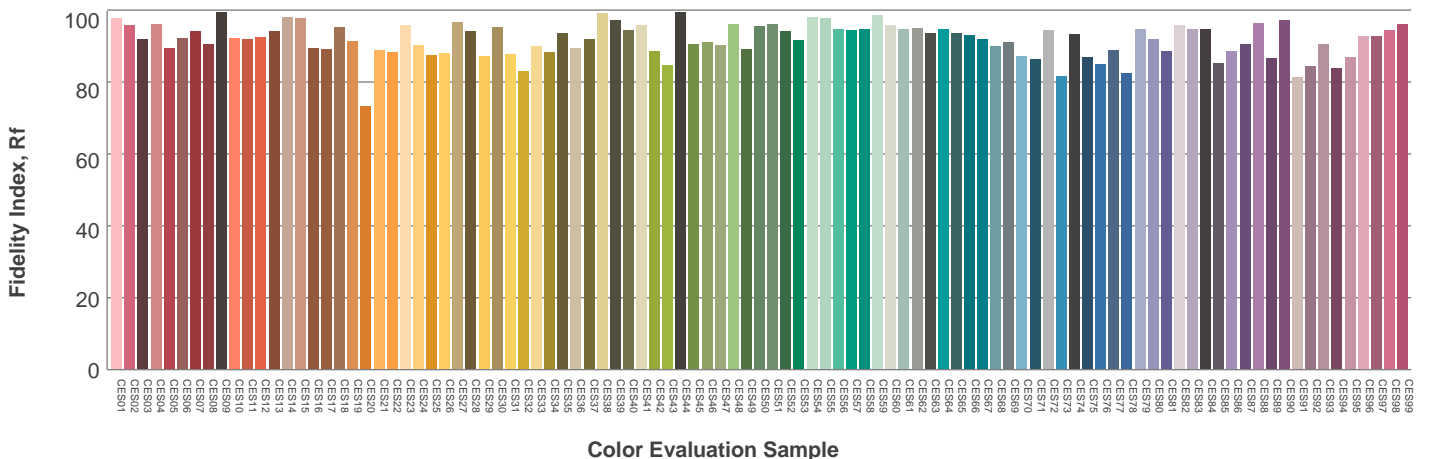
Hue Bin	$R_f$	Graphic shifts (%)	
		Chroma	Hue
1	94	-3%	-1%
2	94	-2%	3%
3	88	1%	6%
4	91	3%	5%
5	93	3%	3%
6	91	6%	0%
7	93	3%	-4%
8	94	1%	-3%
9	96	-1%	0%
10	93	-1%	3%
11	88	1%	8%
12	90	6%	3%
13	93	5%	-2%
14	90	7%	-5%
15	91	2%	-5%
16	88	1%	-10%



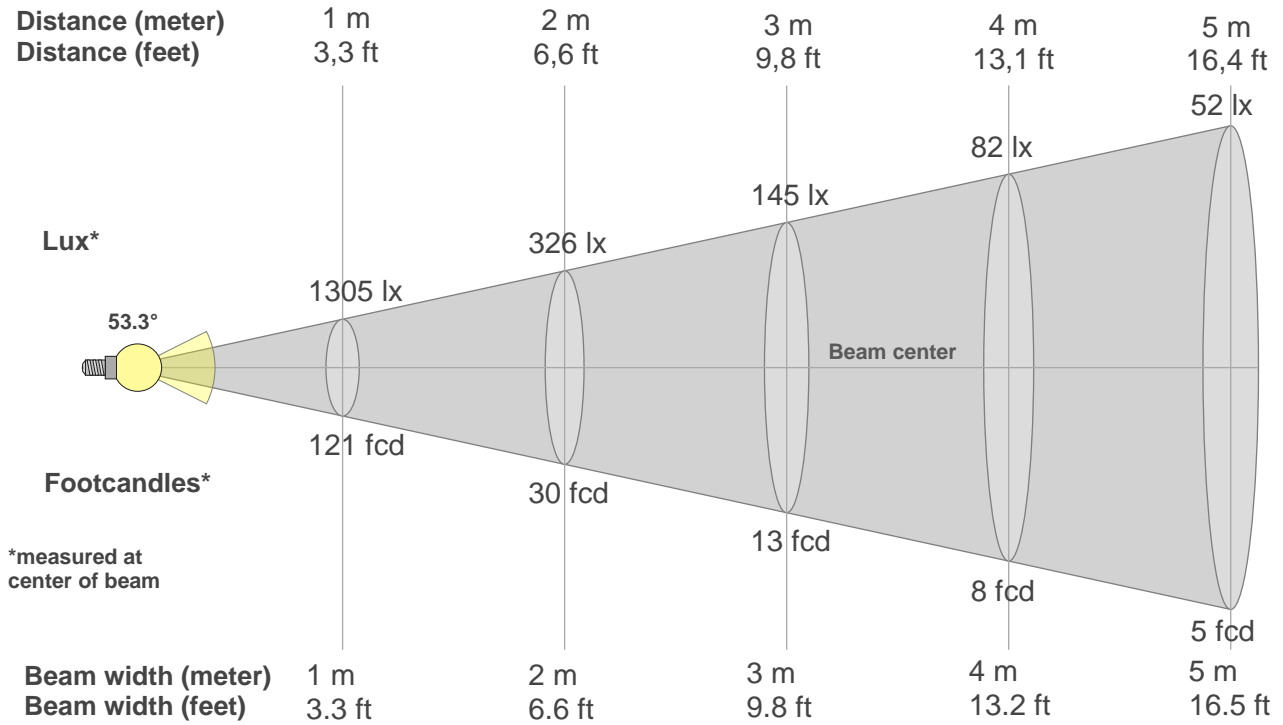
Color vector graphics



Color distortion



### Beam details



#### Beam intensities from 1-20m

1m	2m	3m	4m	5m	6m	7m	8m	9m	10m	11m	12m	13m	14m	15m	16m	17m	18m	19m	20m
3.3ft	6.6ft	9.8ft	13.1ft	16.4ft	19.7ft	23ft	26.2ft	29.5ft	32.8ft	36.1ft	39.4ft	42.7ft	45.9ft	49.2ft	52.5ft	55.8ft	59.1ft	62.3ft	65.6ft
1305lx	326lx	145lx	82lx	52lx	36lx	27lx	20lx	16lx	13lx	11lx	9lx	8lx	7lx	6lx	5lx	5lx	4lx	4lx	3lx
121.2fcd	30.3fcd	13.5fcd	7.6fcd	4.8fcd	3.4fcd	2.5fcd	1.9fcd	1.5fcd	1.2fcd	1fcd	0.8fcd	0.7fcd	0.6fcd	0.5fcd	0.5fcd	0.4fcd	0.4fcd	0.3fcd	0.3fcd

#### Intensities in 0° c-plane

0°	2°	4°	6°	8°	10°	12°	14°	16°	18°	20°	22°	24°	26°	28°	30°	32°	34°	36°	38°
1305	1303	1297	1288	1274	1254	1229	1197	1155	1101	1015	925	828	709	541	383	260	173	115	74
100%	100%	99%	99%	98%	96%	94%	92%	89%	84%	78%	71%	63%	54%	41%	29%	20%	13%	9%	6%

#### Intensities in 90° c-plane

0°	2°	4°	6°	8°	10°	12°	14°	16°	18°	20°	22°	24°	26°	28°	30°	32°	34°	36°	38°
1305	1299	1290	1279	1266	1249	1228	1197	1154	1091	1008	920	829	702	549	387	259	189	134	90
100%	100%	99%	98%	97%	96%	94%	92%	88%	84%	77%	71%	64%	54%	42%	30%	20%	15%	10%	7%

#### Intensities in 180° c-plane

0°	2°	4°	6°	8°	10°	12°	14°	16°	18°	20°	22°	24°	26°	28°	30°	32°	34°	36°	38°
1305	1304	1299	1290	1277	1258	1236	1205	1158	1093	1012	932	837	705	550	398	285	216	163	118
100%	100%	100%	99%	98%	96%	95%	92%	89%	84%	78%	71%	64%	54%	42%	31%	22%	17%	13%	9%

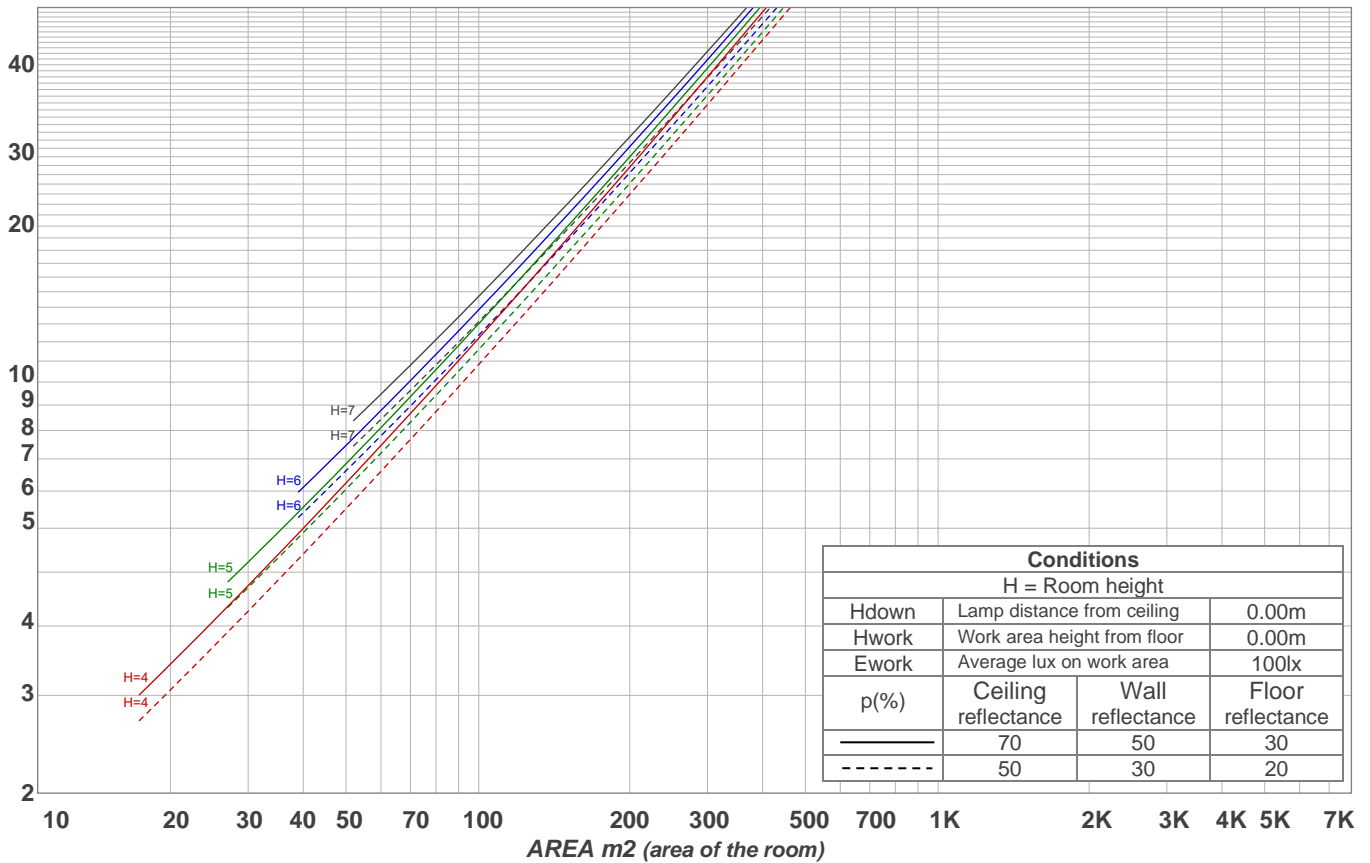
#### Intensities in 270° c-plane

0°	2°	4°	6°	8°	10°	12°	14°	16°	18°	20°	22°	24°	26°	28°	30°	32°	34°	36°	38°
1305	1308	1306	1298	1282	1261	1235	1204	1164	1103	1018	932	834	709	545	386	276	206	149	105
100%	100%	100%	99%	98%	97%	95%	92%	89%	85%	78%	71%	64%	54%	42%	30%	21%	16%	11%	8%

Beam angle 50%	Field angle 10%	Cutoff angle 2,5%	Intensity ratio in 120° cone	Intensity ratio in 90° cone
53.3°	72.9°	86.2°	99.2%	98.4%

LAMPS (number of lamps)  
50

### Light planning Luminaire budgetary diagram



### Luminaire budgetary diagram AREA m2 (area of the room) Coefficients of Utilization

Ceiling reflectance	80				70				50			30			10			0			
Wall reflectance	70	50	30	10	70	50	30	10	50	30	10	50	30	10	50	30	10	50	30	10	0
Floor reflectance	20	20	20	20	20	20	20	20	20	20	20	20	20	20	20	20	20	20	20	20	0
RCR	(RCR: Room Cavity Ratio)																				
	Room Values are expressed as percentage of Lumens delivered to the task surface																				
0	119	119	119	119	116	116	116	116	111	111	111	106	106	106	102	102	102	100	100	100	
1	114	111	109	107	111	109	107	105	105	103	102	101	100	99	98	97	96	94	94	94	
2	109	104	101	97	107	103	99	96	99	97	94	97	94	92	94	92	90	89	89	89	
3	104	98	94	90	102	97	93	89	94	91	88	92	89	86	90	87	85	84	84	84	
4	99	93	88	84	98	91	87	83	89	85	82	87	84	81	86	83	80	79	79	79	
5	95	87	82	78	94	87	82	78	85	81	77	83	79	77	82	78	76	75	75	75	
6	91	83	77	74	90	82	77	73	81	76	73	79	75	72	78	75	72	70	70	70	
7	87	79	73	69	86	78	73	69	77	72	69	76	71	68	74	71	68	67	67	67	
8	83	75	69	65	82	74	69	65	73	68	65	72	68	65	71	67	65	63	63	63	
9	80	71	66	62	79	71	65	62	70	65	62	69	65	62	68	64	61	60	60	60	
10	77	68	62	59	76	67	62	59	67	62	59	66	62	59	65	61	58	57	57	57	

### Zonal Lumen Summary

0°-10°	10°-20°	20°-30°	30°-40°	40°-50°	50°-60°	60°-70°	70°-80°	80°-90°
122 lm	327 lm	335 lm	111 lm	19.5 lm	2.78 lm	2.39 lm	1.99 lm	2.52 lm
90°-100°	100°-110°	110°-120°	120°-130°	130°-140°	140°-150°	150°-160°	160°-170°	170°-180°
0.000 lm	0.000 lm	0.000 lm	0.000 lm	0.000 lm	0.000 lm	0.000 lm	0.000 lm	0.000 lm