

Light efficiency:



Output: 1358 lm

Light quality:

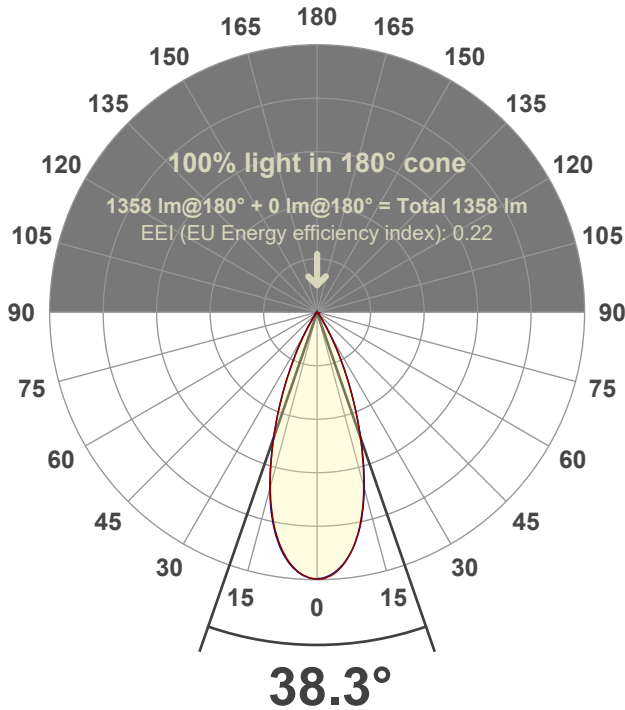


Peak: 3140 cd

Power: 21.3 W



Beam angle



Test number:

GR-F-A20-3019-FL-RD-91A-Rev2

Luminaire Model:

Graffiti Regress Round Fixed Downlight-A20-3019 38° Optic-Solite

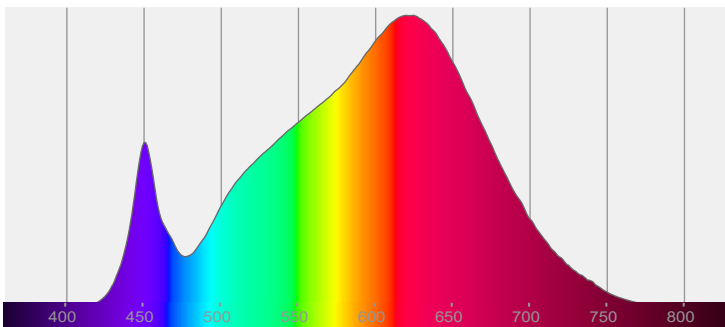
Date and time:

4/28/2022 8:03:07 PM

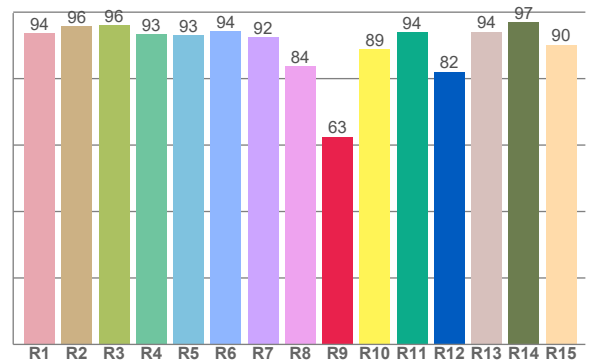
Delivered Lumens

1358

Spectra



CRI: 92.8 (R1-R8)



Color parameters

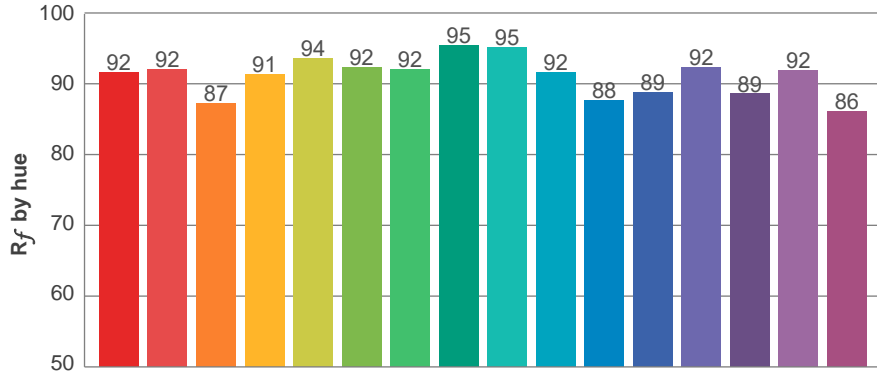
Color rendering index	Red component	Color fidelity	Color gamut	Color quality scale	Color coordinate cie 1931	Color coordinate cie 1931	Color coordinate	Color coordinate	Color divition from black body
CRI	CRI R9	TM30 R _f	TM30 R _g	CQS	x	y	u	v	Δuv
92.8	62.5	91.1	101.5	89.9	0.435	0.399	0.252	0.346	-0.0019

R_f 91.1
Fidelity index R_f

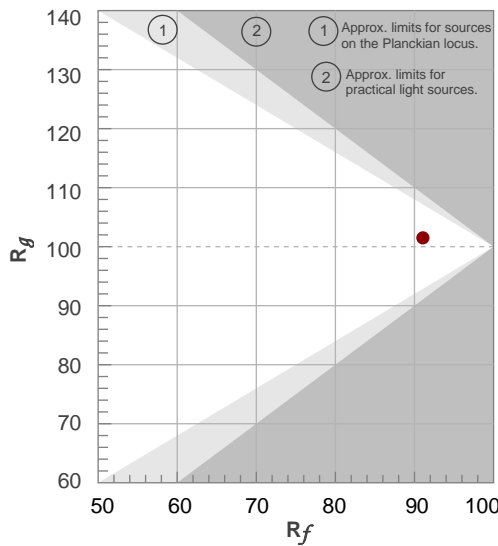
R_g 101.5
Gammut index R_g

TM30: 91.1

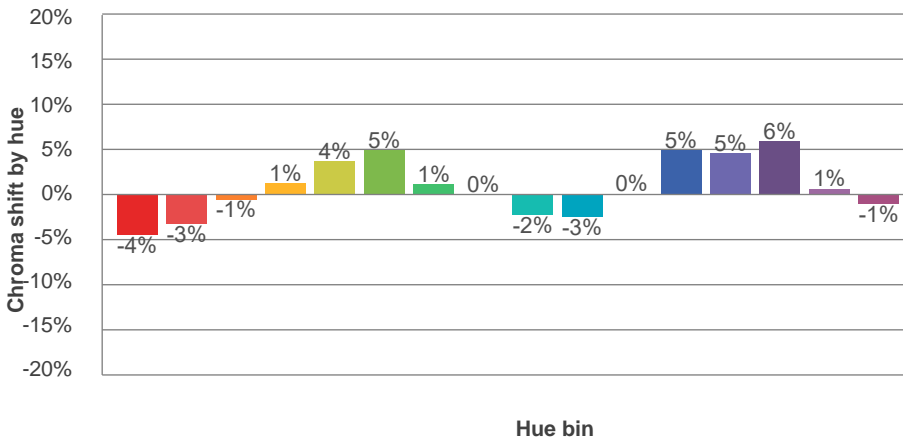
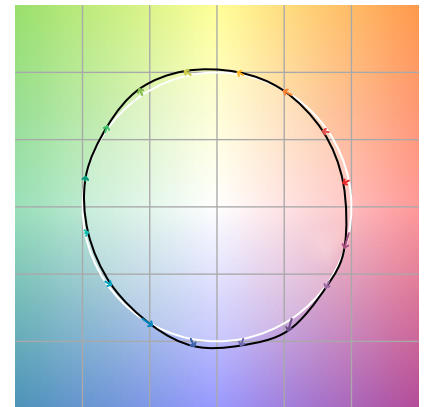
TM-30Color



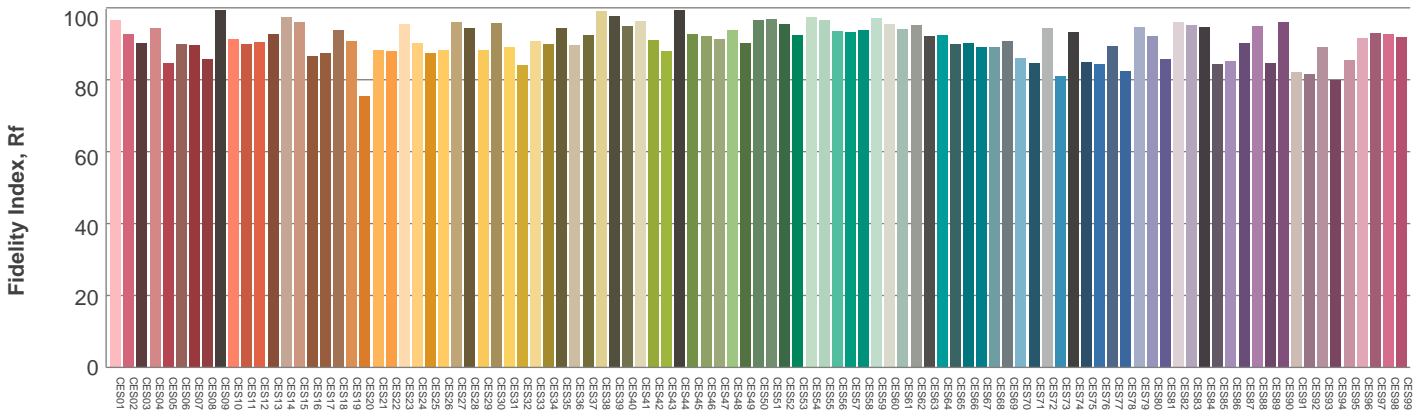
Hue Bin	R_f	Graphic shifts (%)	
		Chroma	Hue
1	92	-4%	-1%
2	92	-3%	3%
3	87	-1%	7%
4	91	1%	4%
5	94	4%	4%
6	92	5%	-1%
7	92	1%	-5%
8	95	0%	-3%
9	95	-2%	0%
10	92	-3%	4%
11	88	0%	9%
12	89	5%	4%
13	92	5%	-3%
14	89	6%	-7%
15	92	1%	-5%
16	86	-1%	-11%



Color vector graphics



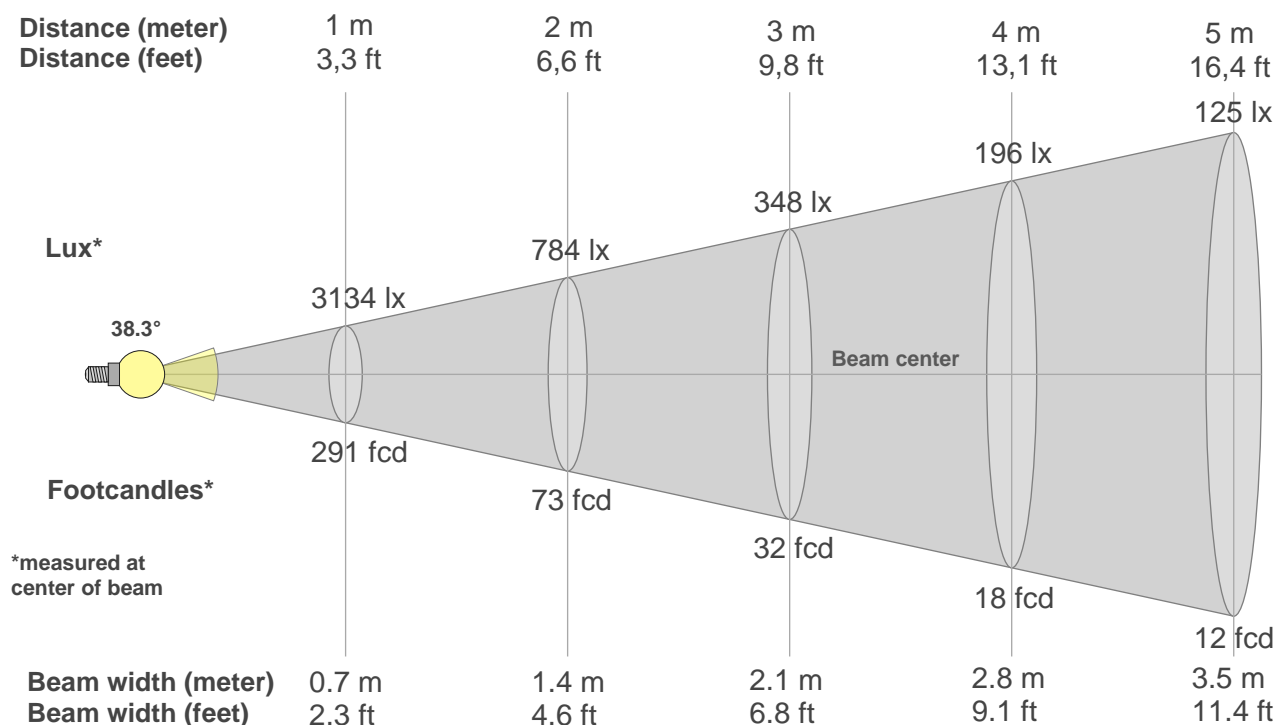
Color distortion



Color Evaluation Sample

www.graffitilighting.com As a result of our continuous improvement, values are subject to change without notice. These are delivered results and can vary +/- 10% from published source data range.

Beam details



Beam intensities from 1-20m

1m	2m	3m	4m	5m	6m	7m	8m	9m	10m	11m	12m	13m	14m	15m	16m	17m	18m	19m	20m
3.3ft	6.6ft	9.8ft	13.1ft	16.4ft	19.7ft	23ft	26.2ft	29.5ft	32.8ft	36.1ft	39.4ft	42.7ft	45.9ft	49.2ft	52.5ft	55.8ft	59.1ft	62.3ft	65.6ft
3134lx	784lx	348lx	196lx	125lx	87lx	64lx	49lx	39lx	31lx	26lx	22lx	19lx	16lx	14lx	12lx	11lx	10lx	9lx	8lx
291.2fcd	72.8fcd	32.4fcd	18.2fcd	11.6fcd	8.1fcd	5.9fcd	4.5fcd	3.6fcd	2.9fcd	2.4fcd	2fcd	1.7fcd	1.5fcd	1.3fcd	1.1fcd	1fcd	0.9fcd	0.8fcd	0.7fcd

Intensities in 0° c-plane

0°	2°	4°	6°	8°	10°	12°	14°	16°	18°	20°	22°	24°	26°	28°	30°	32°	34°	36°	38°
3134	3122	3072	2985	2854	2689	2490	2257	1995	1722	1448	1183	932	706	518	364	244	159	106	74
100%	100%	98%	95%	91%	86%	79%	72%	64%	55%	46%	38%	30%	23%	17%	12%	8%	5%	3%	2%

Intensities in 90° c-plane

0°	2°	4°	6°	8°	10°	12°	14°	16°	18°	20°	22°	24°	26°	28°	30°	32°	34°	36°	38°
3134	3113	3064	2972	2850	2694	2503	2276	2010	1732	1452	1180	927	701	506	345	223	143	96	64
100%	99%	98%	95%	91%	86%	80%	73%	64%	55%	46%	38%	30%	22%	16%	11%	7%	5%	3%	2%

Intensities in 180° c-plane

0°	2°	4°	6°	8°	10°	12°	14°	16°	18°	20°	22°	24°	26°	28°	30°	32°	34°	36°	38°
3134	3118	3070	2978	2851	2691	2496	2266	2003	1726	1449	1181	923	694	502	347	227	146	98	67
100%	99%	98%	95%	91%	86%	80%	72%	64%	55%	46%	38%	29%	22%	16%	11%	7%	5%	3%	2%

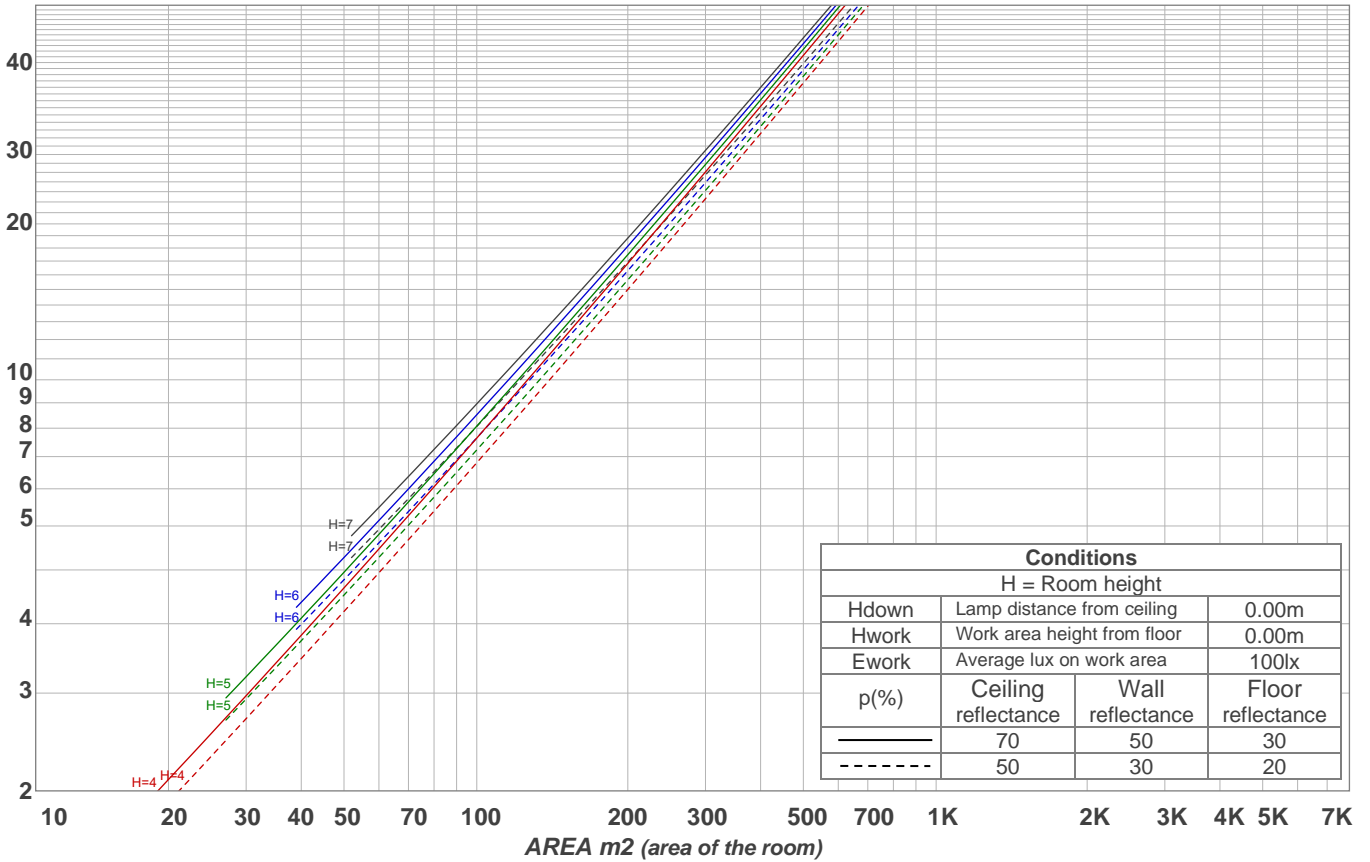
Intensities in 270° c-plane

0°	2°	4°	6°	8°	10°	12°	14°	16°	18°	20°	22°	24°	26°	28°	30°	32°	34°	36°	38°
3134	3118	3072	2992	2868	2708	2513	2283	2013	1732	1449	1175	917	688	499	346	229	147	97	67
100%	99%	98%	95%	92%	86%	80%	73%	64%	55%	46%	37%	29%	22%	16%	11%	7%	5%	3%	2%

Beam angle 50%	Field angle 10%	Cutoff angle 2,5%	Intensity ratio in 120° cone	Intensity ratio in 90° cone
38.3°	61.1°	74.4°	99.2%	98.0%

LAMPS (number of lamps)
50

Light planning Luminaire budgetary diagram



Luminaire budgetary diagram AREA m2 (area of the room) Coefficients of Utilization

Ceiling reflectance	80				70				50			30			10			0
Wall reflectance	70	50	30	10	70	50	30	10	50	30	10	50	30	10	50	30	10	0
Floor reflectance	20	20	20	20	20	20	20	20	20	20	20	20	20	20	20	20	20	0
RCR	(RCR: Room Cavity Ratio) Room Values are expressed as percentage of Lumens delivered to the task surface																	
0	119	119	119	119	116	116	116	116	111	111	111	106	106	106	102	102	102	100
1	114	112	110	108	112	110	108	106	106	104	103	102	101	100	99	98	97	95
2	110	106	102	99	108	104	101	98	101	98	96	98	96	94	95	94	92	91
3	105	100	96	93	104	99	95	92	96	93	90	94	91	89	92	90	88	86
4	101	95	91	87	100	94	90	87	92	88	86	90	87	85	88	86	84	82
5	98	91	86	82	96	90	85	82	88	84	81	87	83	81	85	82	80	79
6	94	87	82	78	93	86	81	78	85	80	77	83	80	77	82	79	76	75
7	91	83	78	75	89	82	78	74	81	77	74	80	76	74	79	76	73	72
8	87	80	75	71	86	79	74	71	78	74	71	77	73	71	76	73	70	69
9	84	76	72	68	83	76	71	68	75	71	68	74	70	68	74	70	68	66
10	81	73	69	66	81	73	69	65	72	68	65	72	68	65	71	68	65	64

Zonal Lumen Summary

0°-10°	10°-20°	20°-30°	30°-40°	40°-50°	50°-60°	60°-70°	70°-80°	80°-90°
279 lm	582 lm	371 lm	86.8 lm	19.3 lm	8.49 lm	5.09 lm	3.18 lm	2.96 lm
90°-100°	100°-110°	110°-120°	120°-130°	130°-140°	140°-150°	150°-160°	160°-170°	170°-180°
0.000 lm	0.000 lm	0.000 lm	0.000 lm	0.000 lm	0.000 lm	0.000 lm	0.000 lm	0.000 lm

www.graffitilighting.com As a result of our continuous improvement, values are subject to change without notice. These are delivered results and can vary +/- 10% from published source data range.