

Light efficiency:



Output: 1304 lm

Light quality:

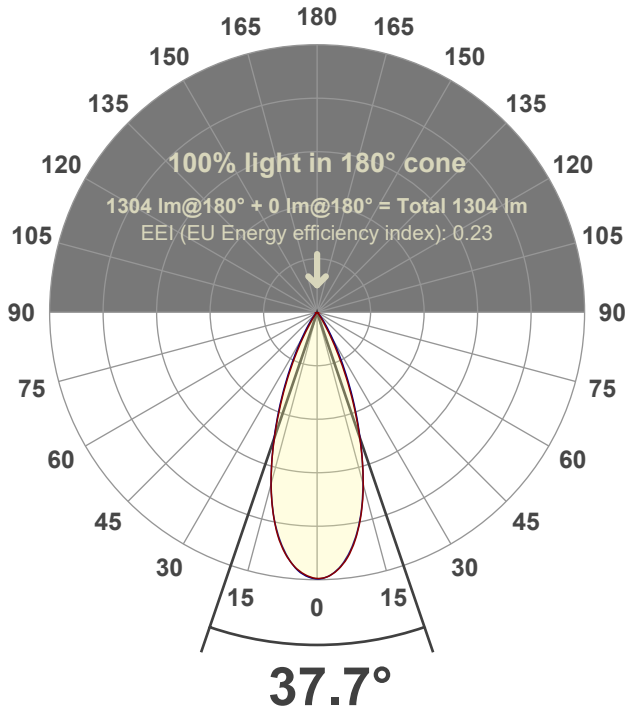


Peak: 3021 cd

Power: 21.3 W



Beam angle



Test number:

GR-F-A20-3019-FL-SQ-91A-Rev2

Luminaire Model:

Graffiti Regress Square Fixed Downlight-A20-3019 38° Optic-Solite

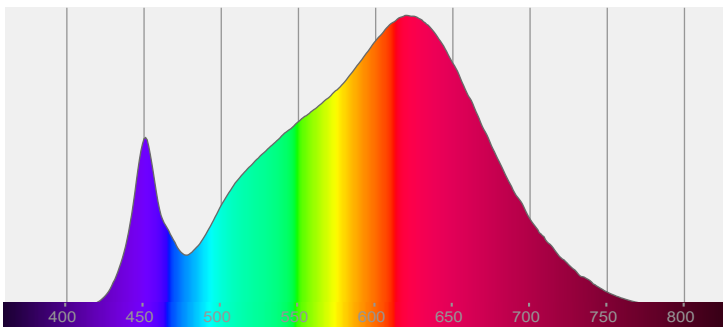
Date and time:

6/21/2022 8:19:52 PM

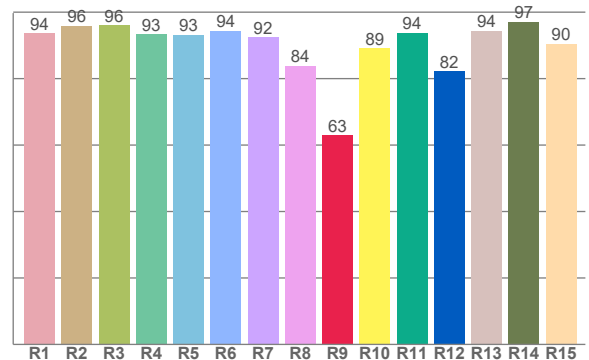
Delivered Lumens

1304

Spectra



CRI: 92.9 (R1-R8)



Color parameters

Color rendering index	Red component	Color fidelity	Color gamut	Color quality scale	Color coordinate cie 1931	Color coordinate cie 1931	Color coordinate	Color coordinate	Color divition from black body
CRI	CRI R9	TM30 R _f	TM30 R _g	CQS	x	y	u	v	Δuv
92.9	63.0	91.0	101.7	89.9	0.433	0.397	0.251	0.345	-0.0023

R_f 91.0

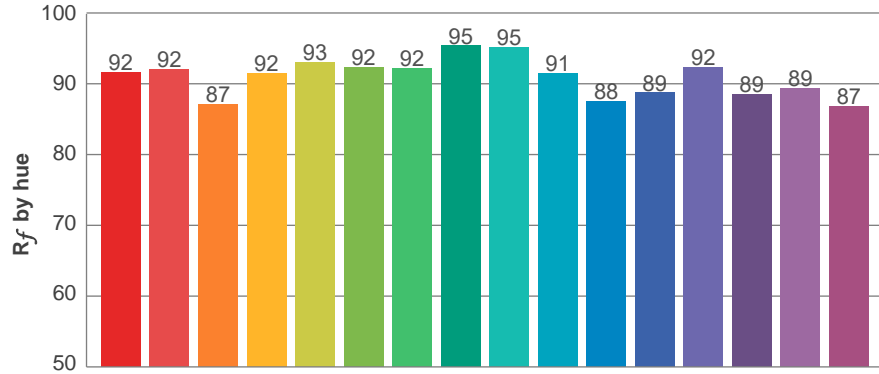
Fidelity index R_f

R_g 101.7

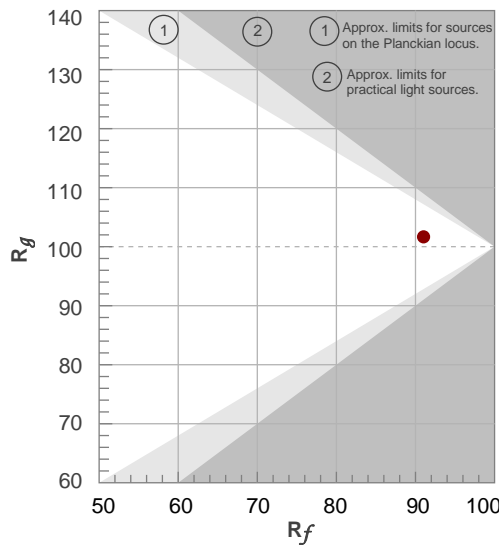
Gammut index R_g

TM30: 91.0

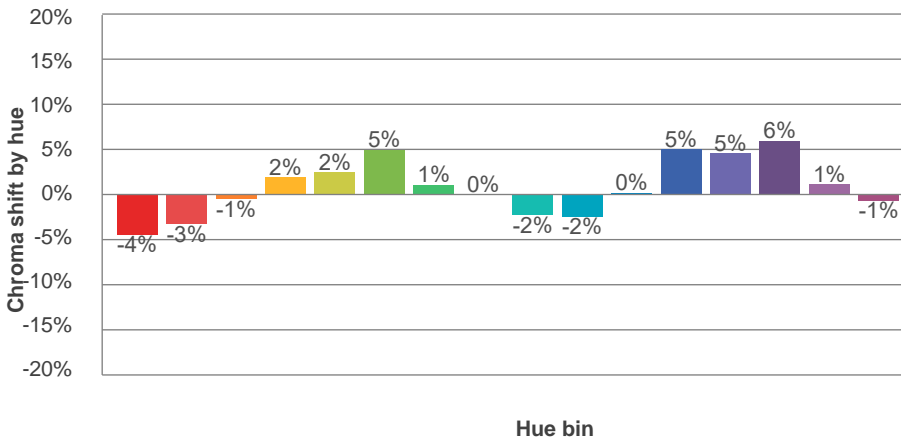
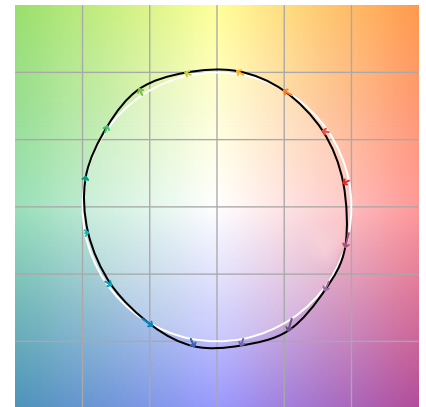
TM-30Color



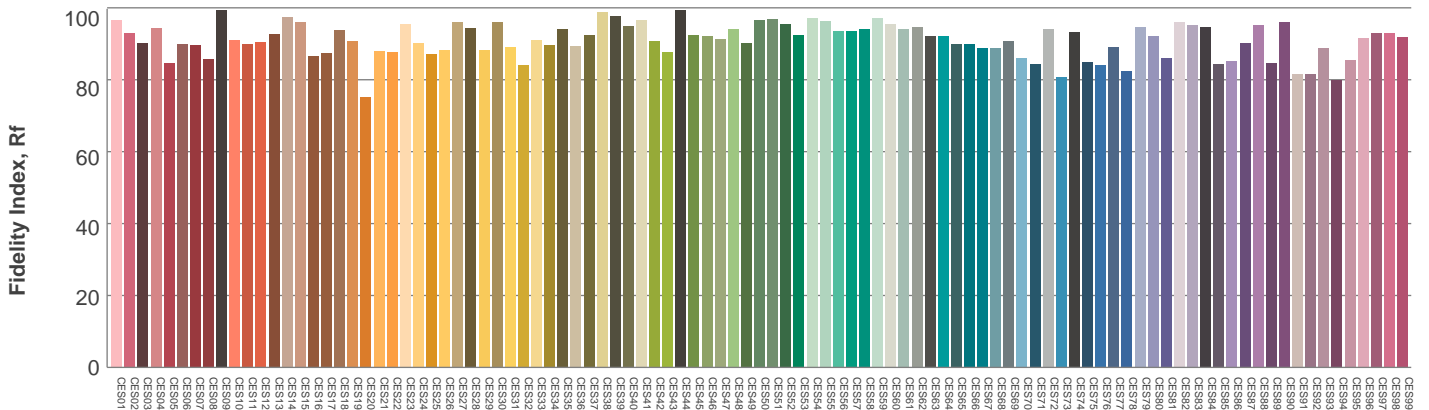
Hue Bin	R_f	Graphic shifts (%)	
		Chroma	Hue
1	92	-4%	-1%
2	92	-3%	3%
3	87	-1%	7%
4	92	2%	5%
5	93	2%	4%
6	92	5%	-1%
7	92	1%	-4%
8	95	0%	-3%
9	95	-2%	0%
10	91	-2%	5%
11	88	0%	9%
12	89	5%	4%
13	92	5%	-3%
14	89	6%	-7%
15	89	1%	-7%
16	87	-1%	-11%



Color vector graphics

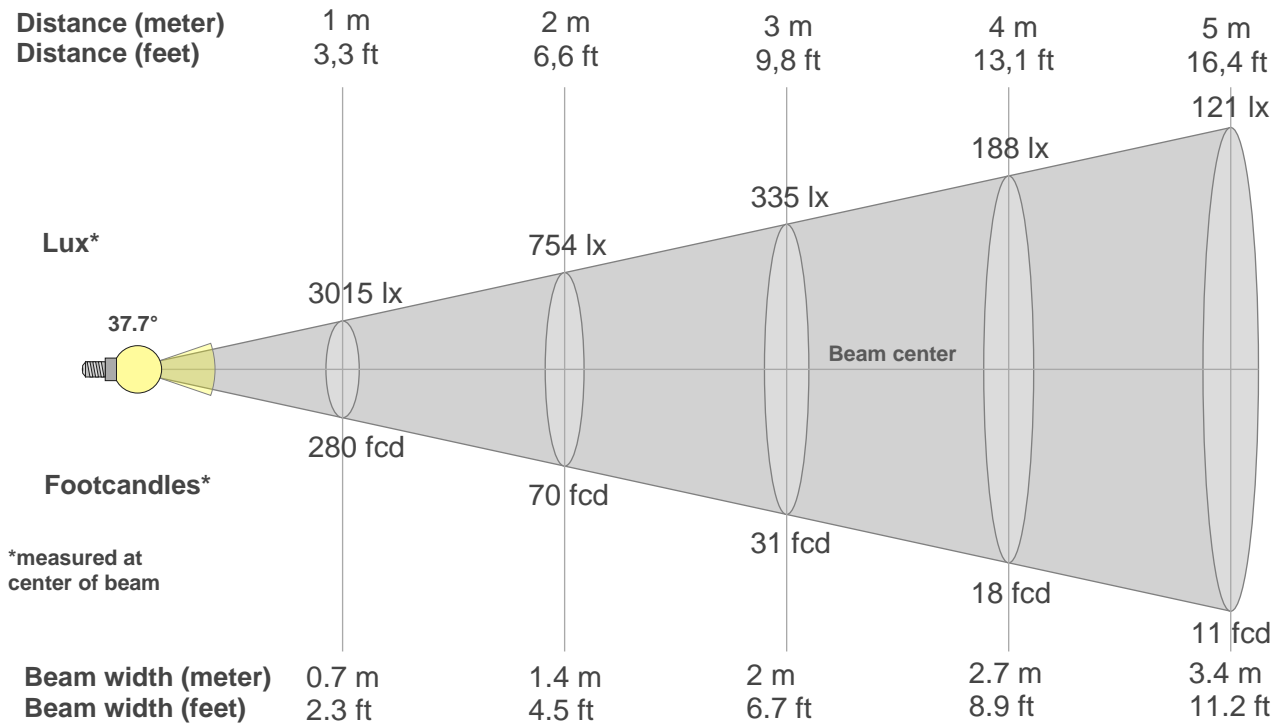


Color distortion



Color Evaluation Sample

Beam details



Beam intensities from 1-20m

1m	2m	3m	4m	5m	6m	7m	8m	9m	10m	11m	12m	13m	14m	15m	16m	17m	18m	19m	20m
3.3ft	6.6ft	9.8ft	13.1ft	16.4ft	19.7ft	23ft	26.2ft	29.5ft	32.8ft	36.1ft	39.4ft	42.7ft	45.9ft	49.2ft	52.5ft	55.8ft	59.1ft	62.3ft	65.6ft
3015lx	754lx	335lx	188lx	121lx	84lx	62lx	47lx	37lx	30lx	25lx	21lx	18lx	15lx	13lx	12lx	10lx	9lx	8lx	8lx
280.1fcd	70fcd	31.1fcd	17.5fcd	11.2fcd	7.8fcd	5.7fcd	4.4fcd	3.5fcd	2.8fcd	2.3fcd	1.9fcd	1.7fcd	1.4fcd	1.2fcd	1.1fcd	1fcd	0.9fcd	0.8fcd	0.7fcd

Intensities in 0° c-plane

0°	2°	4°	6°	8°	10°	12°	14°	16°	18°	20°	22°	24°	26°	28°	30°	32°	34°	36°	38°
3015	3002	2946	2857	2732	2571	2378	2148	1892	1621	1347	1081	832	609	426	287	189	125	86	60
100%	100%	98%	95%	91%	85%	79%	71%	63%	54%	45%	36%	28%	20%	14%	10%	6%	4%	3%	2%

Intensities in 90° c-plane

0°	2°	4°	6°	8°	10°	12°	14°	16°	18°	20°	22°	24°	26°	28°	30°	32°	34°	36°	38°
3015	2997	2941	2849	2723	2559	2362	2136	1887	1627	1369	1125	897	692	518	376	274	201	147	108
100%	99%	98%	94%	90%	85%	78%	71%	63%	54%	45%	37%	30%	23%	17%	12%	9%	7%	5%	4%

Intensities in 180° c-plane

0°	2°	4°	6°	8°	10°	12°	14°	16°	18°	20°	22°	24°	26°	28°	30°	32°	34°	36°	38°
3015	2986	2930	2844	2725	2570	2368	2141	1889	1620	1346	1086	846	629	443	296	195	134	93	65
100%	99%	97%	94%	90%	85%	79%	71%	63%	54%	45%	36%	28%	21%	15%	10%	6%	4%	3%	2%

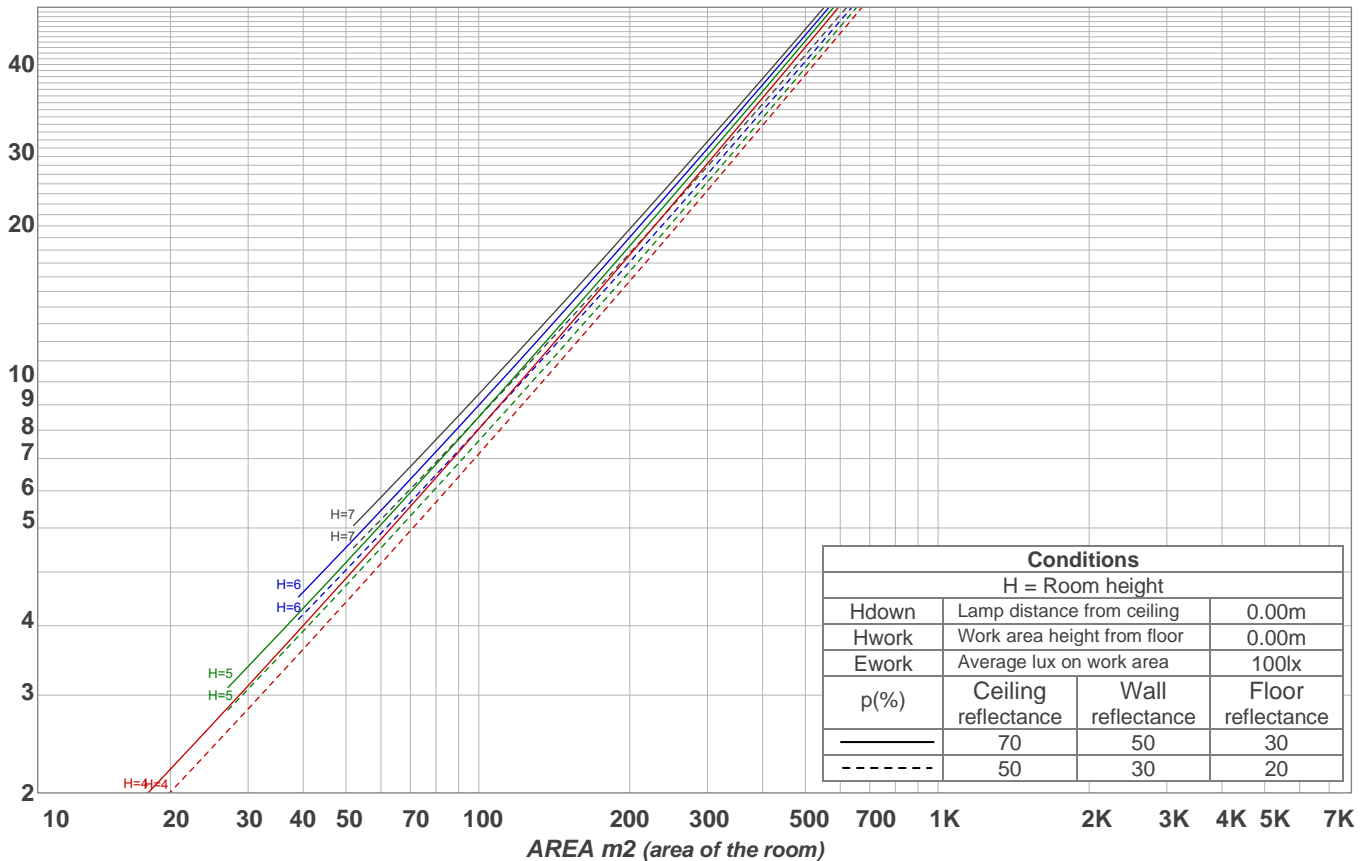
Intensities in 270° c-plane

0°	2°	4°	6°	8°	10°	12°	14°	16°	18°	20°	22°	24°	26°	28°	30°	32°	34°	36°	38°
3015	2998	2941	2842	2711	2552	2363	2140	1887	1628	1370	1122	891	686	518	382	279	204	151	114
100%	99%	98%	94%	90%	85%	78%	71%	63%	54%	45%	37%	30%	23%	17%	13%	9%	7%	5%	4%

Beam angle 50%	Field angle 10%	Cutoff angle 2,5%	Intensity ratio in 120° cone	Intensity ratio in 90° cone
37.7°	61.2°	77.4°	99.0%	97.7%

LAMPS (number of lamps)
50

Light planning Luminaire budgetary diagram



Luminaire budgetary diagram AREA m2 (area of the room) Coefficients of Utilization

Ceiling reflectance	80				70				50			30			10			0
Wall reflectance	70	50	30	10	70	50	30	10	50	30	10	50	30	10	50	30	10	0
Floor reflectance	20	20	20	20	20	20	20	20	20	20	20	20	20	20	20	20	20	0
RCR	(RCR: Room Cavity Ratio) Room Values are expressed as percentage of Lumens delivered to the task surface																	
0	119	119	119	119	116	116	116	116	111	111	111	106	106	106	102	102	102	100
1	114	112	110	108	112	110	108	106	106	104	103	102	101	100	99	98	97	95
2	110	105	102	99	107	104	101	98	101	98	96	98	96	94	95	93	92	90
3	105	100	96	92	103	98	95	91	96	93	90	94	91	89	91	89	87	86
4	101	95	90	87	99	94	89	86	92	88	85	90	87	84	88	85	83	82
5	97	90	85	82	96	89	85	81	88	84	81	86	83	80	85	82	79	78
6	94	86	81	78	92	85	81	77	84	80	77	83	79	76	81	78	76	75
7	90	82	77	74	89	82	77	74	81	76	73	80	76	73	78	75	73	71
8	87	79	74	71	86	78	74	70	77	73	70	77	73	70	76	72	70	69
9	84	76	71	68	83	75	71	68	74	70	67	74	70	67	73	69	67	66
10	81	73	68	65	80	72	68	65	72	68	65	71	67	64	70	67	64	63

Zonal Lumen Summary

0°-10°	10°-20°	20°-30°	30°-40°	40°-50°	50°-60°	60°-70°	70°-80°	80°-90°
266 lm	548 lm	349 lm	96.0 lm	24.4 lm	8.56 lm	5.68 lm	3.89 lm	3.41 lm

90°-100°	100°-110°	110°-120°	120°-130°	130°-140°	140°-150°	150°-160°	160°-170°	170°-180°
0.000 lm	0.000 lm	0.000 lm	0.000 lm	0.000 lm	0.000 lm	0.000 lm	0.000 lm	0.000 lm