

Light efficiency:



Output: 1323 lm

Light quality:

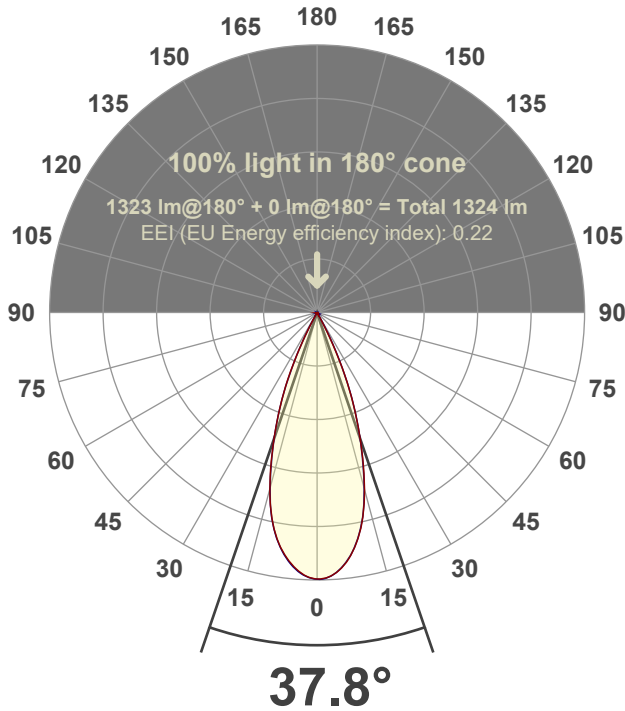


Peak: 3515 cd

Power: 21.3 W



Beam angle



Test number:

GR-F-A20-3019-FL-SQ-Rev2

Luminaire Model:

Graffiti Regress Square Fixed Downlight-A20-3019 38° Optic

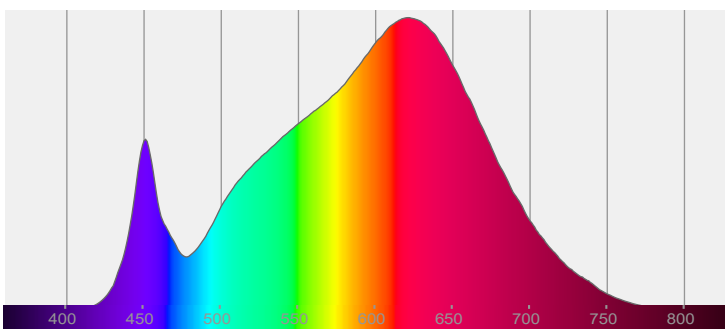
Date and time:

6/21/2022 8:16:44 PM

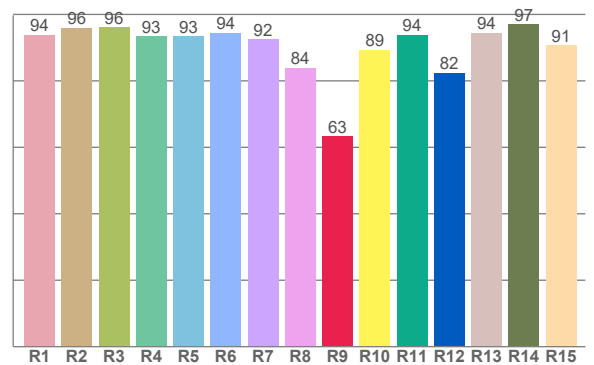
Delivered Lumens

1323

Spectra



CRI: 92.9 (R1-R8)



Color parameters

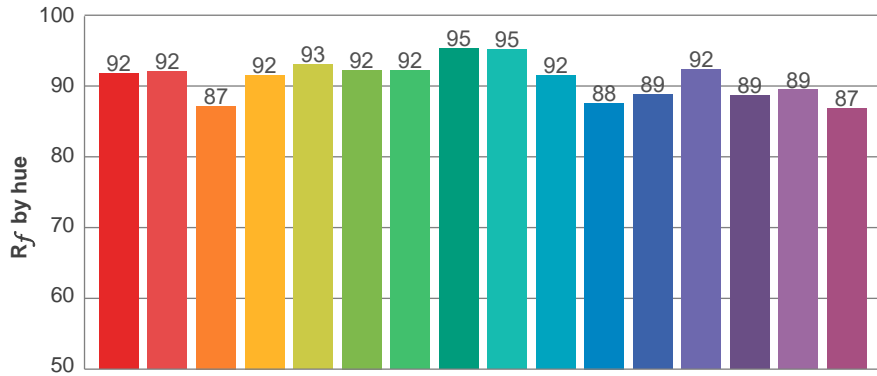
	Color rendering index	Red component	Color fidelity	Color gamut	Color quality scale	Color coordinate cie 1931	Color coordinate cie 1931	Color coordinate	Color coordinate	Color deviation from black body
	CRI	CRI R9	TM30 R _f	TM30 R _g	CQS	x	y	u	v	Δuv
	92.9	63.4	91.1	101.7	89.9	0.433	0.397	0.251	0.345	-0.0024

R_f 91.1
Fidelity index R_f

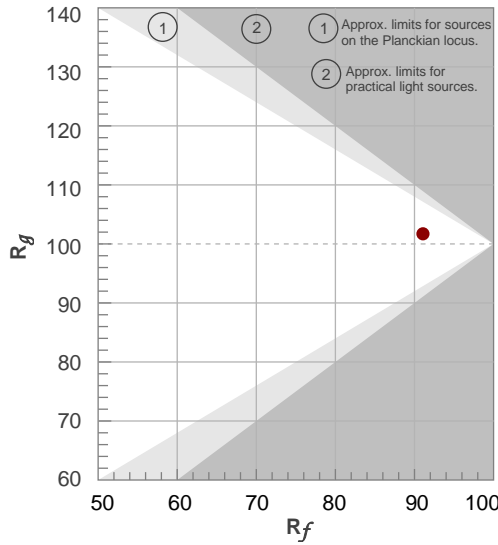
R_g 101.7
Gammut index R_g

TM30: 91.1

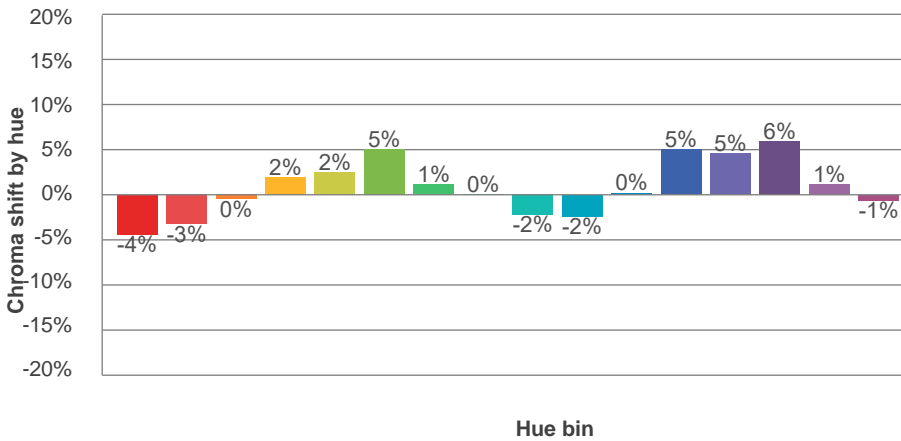
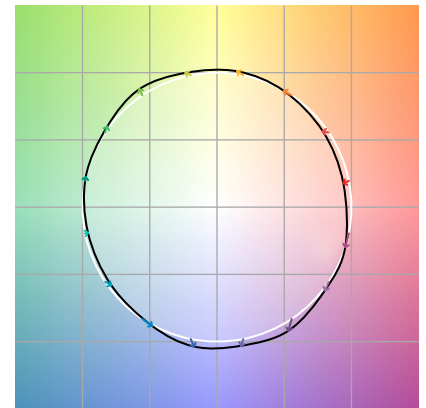
TM-30Color



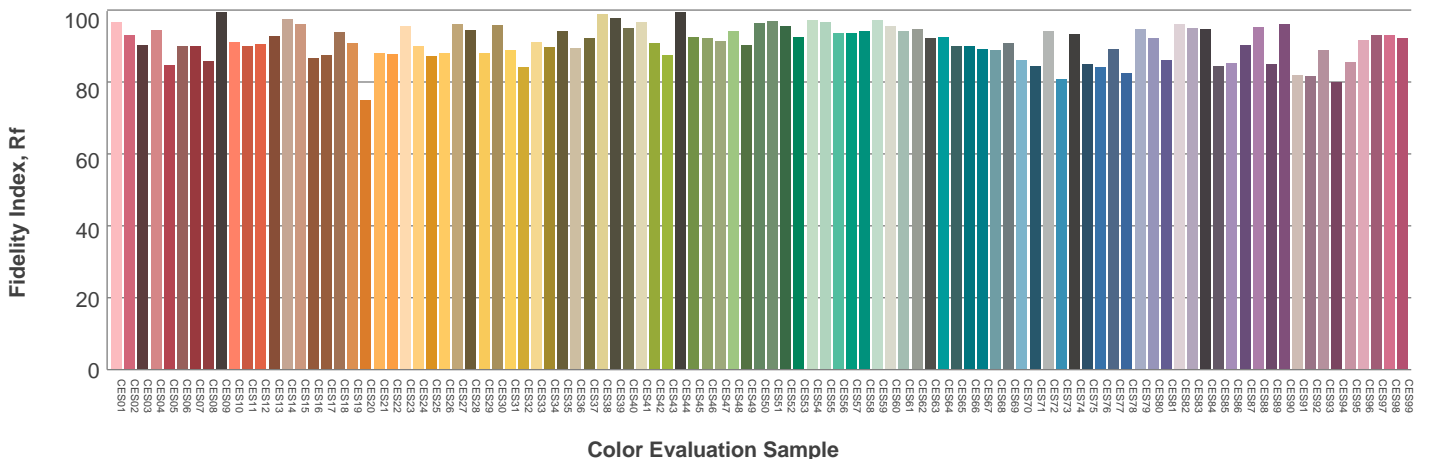
Hue Bin	R_f	Graphic shifts (%)	
		Chroma	Hue
1	92	-4%	-1%
2	92	-3%	3%
3	87	0%	7%
4	92	2%	5%
5	93	2%	4%
6	92	5%	-1%
7	92	1%	-4%
8	95	0%	-3%
9	95	-2%	0%
10	92	-2%	5%
11	88	0%	9%
12	89	5%	4%
13	92	5%	-3%
14	89	6%	-7%
15	89	1%	-7%
16	87	-1%	-11%



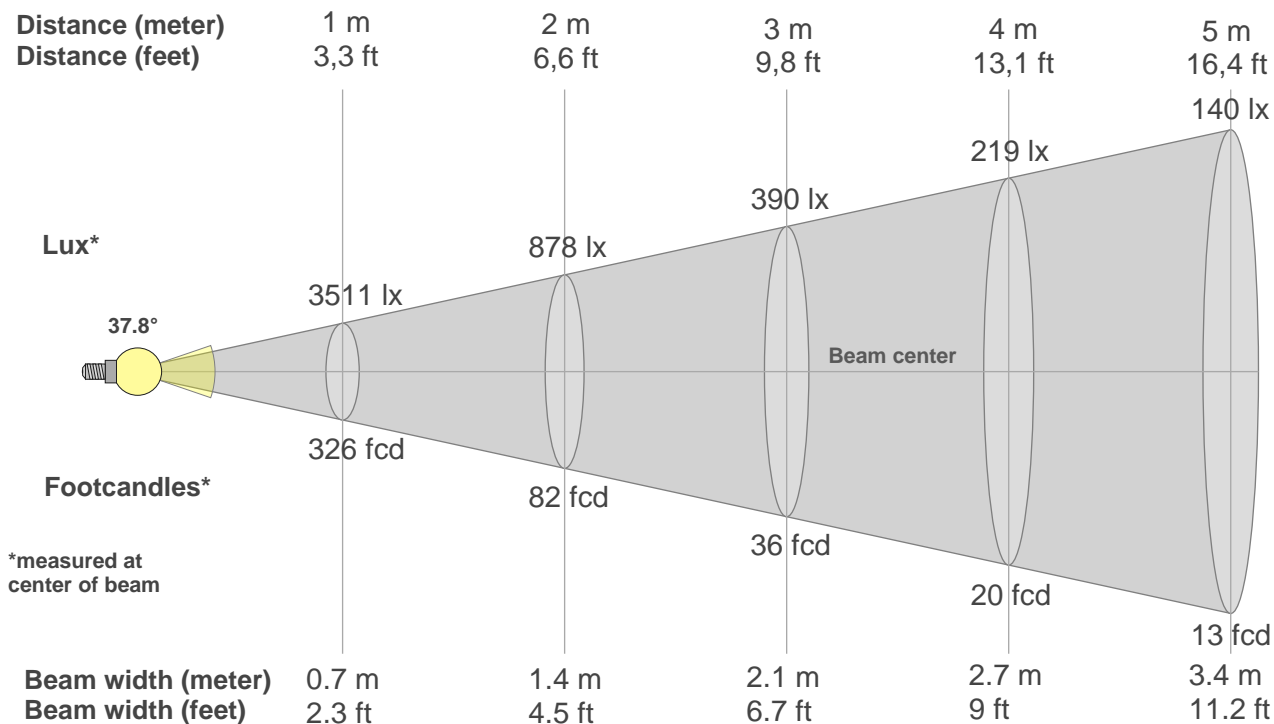
Color vector graphics



Color distortion



Beam details



Beam intensities from 1-20m

1m	2m	3m	4m	5m	6m	7m	8m	9m	10m	11m	12m	13m	14m	15m	16m	17m	18m	19m	20m
3.3ft	6.6ft	9.8ft	13.1ft	16.4ft	19.7ft	23ft	26.2ft	29.5ft	32.8ft	36.1ft	39.4ft	42.7ft	45.9ft	49.2ft	52.5ft	55.8ft	59.1ft	62.3ft	65.6ft
3511lx	878lx	390lx	219lx	140lx	98lx	72lx	55lx	43lx	35lx	29lx	24lx	21lx	18lx	16lx	14lx	12lx	11lx	10lx	9lx
326.2fcd	81.6fcd	36.2fcd	20.4fcd	13fcd	9.1fcd	6.7fcd	5.1fcd	4fcd	3.3fcd	2.7fcd	2.3fcd	1.9fcd	1.7fcd	1.4fcd	1.3fcd	1.1fcd	1fcd	0.9fcd	0.8fcd

Intensities in 0° c-plane

0°	2°	4°	6°	8°	10°	12°	14°	16°	18°	20°	22°	24°	26°	28°	30°	32°	34°	36°	38°
3511	3495	3441	3349	3220	3051	2841	2568	2253	1915	1575	1241	904	556	272	100	30	17	13	11
100%	100%	98%	95%	92%	87%	81%	73%	64%	55%	45%	35%	26%	16%	8%	3%	1%	0%	0%	0%

Intensities in 90° c-plane

0°	2°	4°	6°	8°	10°	12°	14°	16°	18°	20°	22°	24°	26°	28°	30°	32°	34°	36°	38°
3511	3497	3442	3349	3216	3041	2823	2553	2234	1898	1572	1240	898	575	302	93	32	17	12	10
100%	100%	98%	95%	92%	87%	80%	73%	64%	54%	45%	35%	26%	16%	9%	3%	1%	0%	0%	0%

Intensities in 180° c-plane

0°	2°	4°	6°	8°	10°	12°	14°	16°	18°	20°	22°	24°	26°	28°	30°	32°	34°	36°	38°
3511	3486	3418	3319	3191	3029	2824	2562	2248	1913	1579	1253	927	579	287	107	30	16	13	10
100%	99%	97%	95%	91%	86%	80%	73%	64%	54%	45%	36%	26%	16%	8%	3%	1%	0%	0%	0%

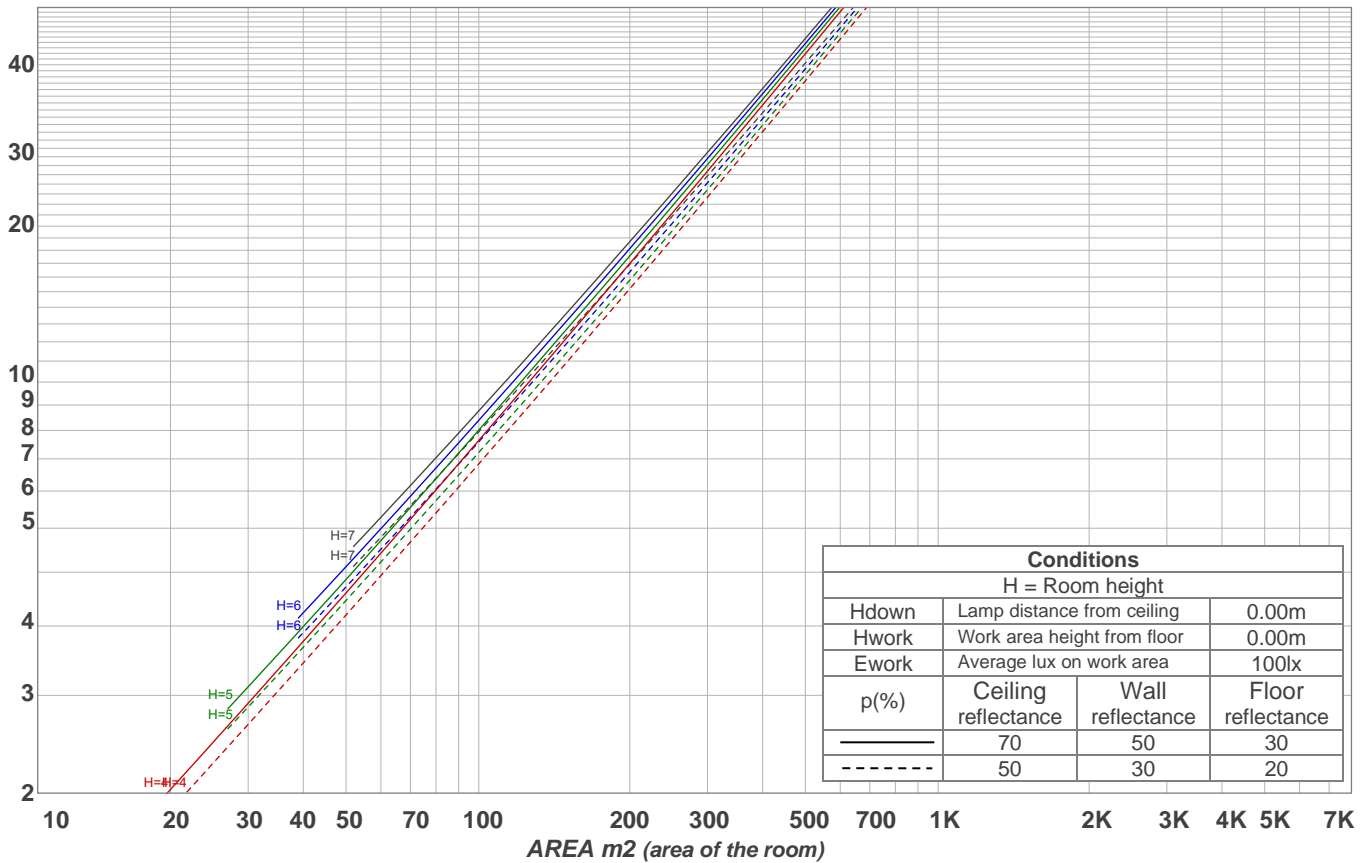
Intensities in 270° c-plane

0°	2°	4°	6°	8°	10°	12°	14°	16°	18°	20°	22°	24°	26°	28°	30°	32°	34°	36°	38°
3511	3486	3428	3335	3202	3033	2820	2552	2232	1897	1573	1246	901	569	289	85	33	18	13	10
100%	99%	98%	95%	91%	86%	80%	73%	64%	54%	45%	35%	26%	16%	8%	2%	1%	1%	0%	0%

Beam angle 50%	Field angle 10%	Cutoff angle 2,5%	Intensity ratio in 120° cone	Intensity ratio in 90° cone
37.8°	55°	60.3°	99.2%	98.8%

LAMPS (number of lamps)
50

Light planning Luminaire budgetary diagram



Luminaire budgetary diagram AREA m2 (area of the room) Coefficients of Utilization

Ceiling reflectance	80				70				50			30			10			0			
Wall reflectance	70	50	30	10	70	50	30	10	50	30	10	50	30	10	50	30	10	50	30	10	0
Floor reflectance	20	20	20	20	20	20	20	20	20	20	20	20	20	20	20	20	20	20	20	20	0
RCR	(RCR: Room Cavity Ratio)																				
	Room Values are expressed as percentage of Lumens delivered to the task surface																				
0	119	119	119	119	116	116	116	116	111	111	111	106	106	106	102	102	102	100	100	100	
1	115	112	110	108	112	110	108	107	106	105	103	102	101	100	99	98	97	96	96	96	
2	110	107	103	101	108	105	102	99	102	99	97	99	97	95	96	95	93	92	92	92	
3	107	102	98	95	105	100	97	94	98	95	92	95	93	91	93	91	90	88	88	88	
4	103	97	93	90	101	96	92	89	94	91	88	92	89	87	90	88	86	85	85	85	
5	99	93	89	85	98	92	88	85	91	87	84	89	86	84	88	85	83	82	82	82	
6	96	89	85	82	95	89	84	81	87	84	81	86	83	80	85	82	80	79	79	79	
7	93	86	82	78	92	85	81	78	84	81	78	83	80	77	82	79	77	76	76	76	
8	90	83	78	75	89	82	78	75	81	78	75	81	77	75	80	77	74	73	73	73	
9	87	80	76	73	86	80	75	72	79	75	72	78	75	72	77	74	72	71	71	71	
10	85	77	73	70	84	77	73	70	76	72	70	76	72	70	75	72	69	68	68	68	

Zonal Lumen Summary

0°-10°	10°-20°	20°-30°	30°-40°	40°-50°	50°-60°	60°-70°	70°-80°	80°-90°
313 lm	649 lm	331 lm	12.8 lm	4.36 lm	3.09 lm	3.10 lm	3.72 lm	3.85 lm
90°-100°	100°-110°	110°-120°	120°-130°	130°-140°	140°-150°	150°-160°	160°-170°	170°-180°
0.000 lm	0.000 lm	0.000 lm	0.000 lm	0.000 lm	0.000 lm	0.000 lm	0.000 lm	0.000 lm