

Light efficiency:



Output: 1292 lm

Light quality:

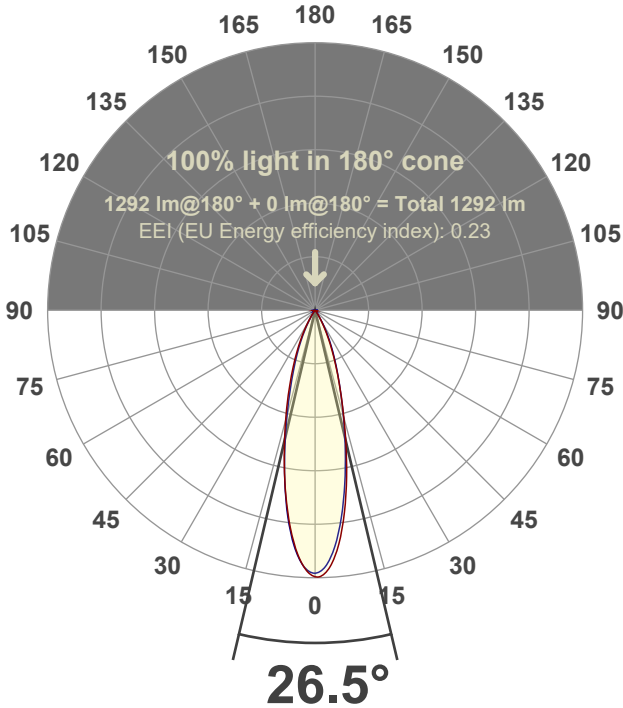


Peak: 4664 cd

Power: 21.3 W



Beam angle



Test number:

GR-F-A20-3019-NF-RD-91A-Rev2

Luminaire Model:

Graffiti Regress Round Fixed Downlight-A20-3019 24° Optic-Solite

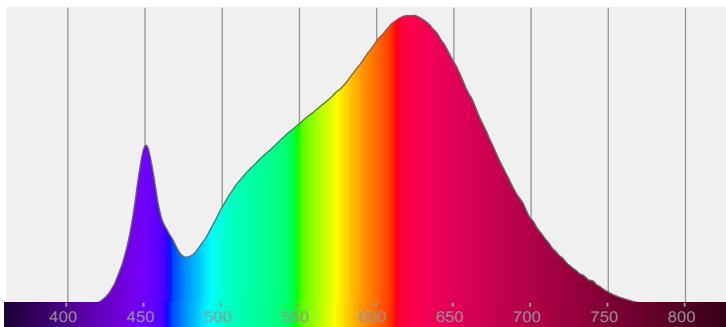
Date and time:

4/28/2022 7:58:38 PM

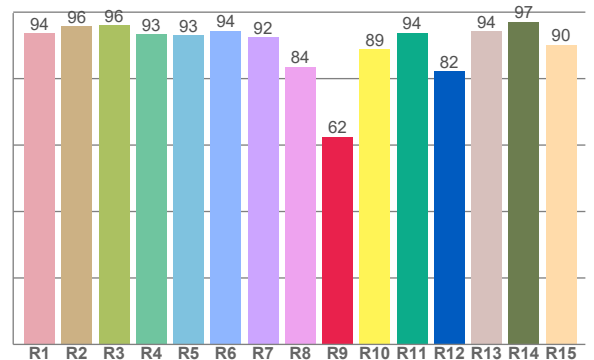
Delivered Lumens

1292

Spectra



CRI: 92.8 (R1-R8)



Color parameters

Color rendering index	Red component	Color fidelity	Color gamut	Color quality scale	Color coordinate cie 1931	Color coordinate cie 1931	Color coordinate	Color coordinate	Color diviation from black body
CRI	CRI R9	TM30 R _f	TM30 R _g	CQS	x	y	u	v	Δuv
92.8	62.5	91.1	101.5	89.9	0.436	0.399	0.252	0.346	-0.0020

R_f 91.1

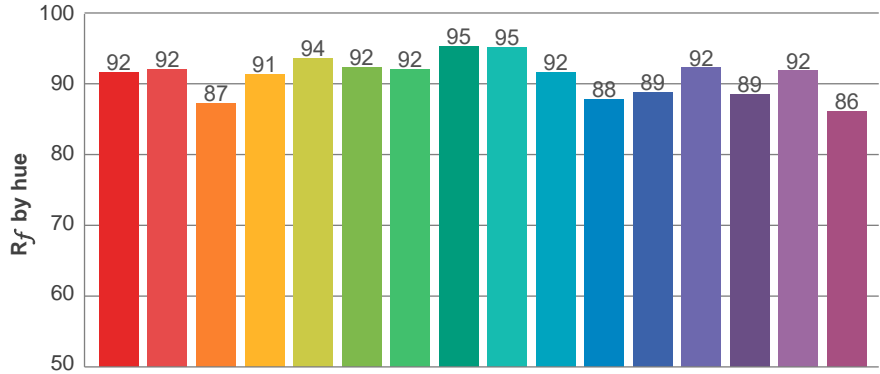
Fidelity index R_f

R_g 101.5

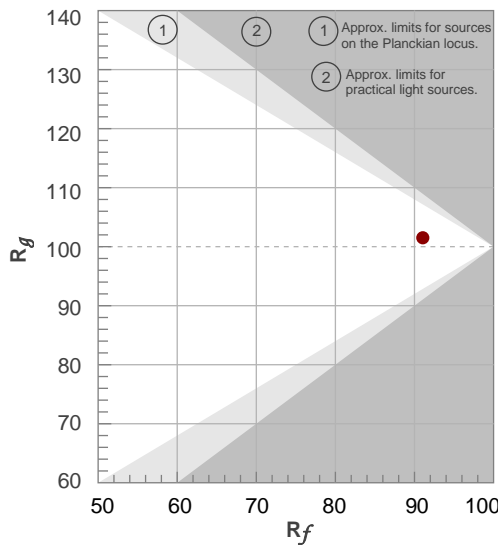
Gammut index R_g

TM30: 91.1

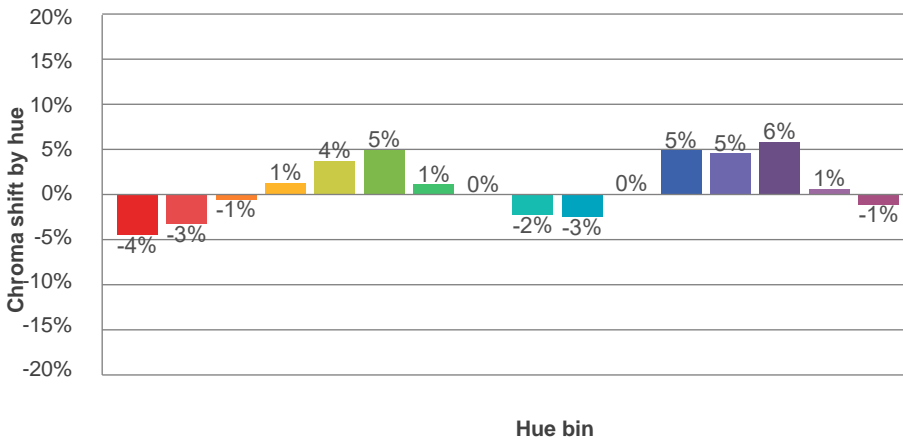
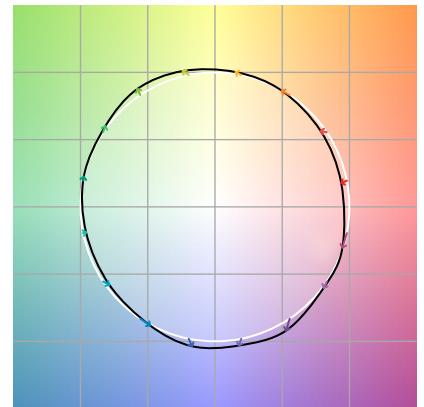
TM-30Color



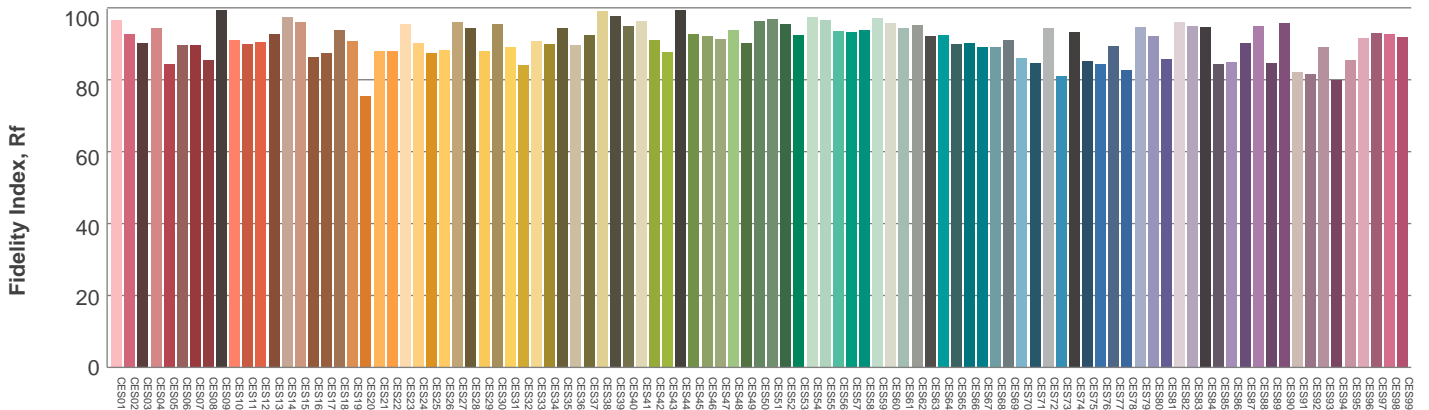
Hue Bin	R _f	Graphic shifts (%)	
		Chroma	Hue
1	92	-4%	-1%
2	92	-3%	3%
3	87	-1%	7%
4	91	1%	4%
5	94	4%	4%
6	92	5%	-1%
7	92	1%	-5%
8	95	0%	-3%
9	95	-2%	0%
10	92	-3%	4%
11	88	0%	9%
12	89	5%	3%
13	92	5%	-3%
14	89	6%	-7%
15	92	1%	-5%
16	86	-1%	-11%



Color vector graphics



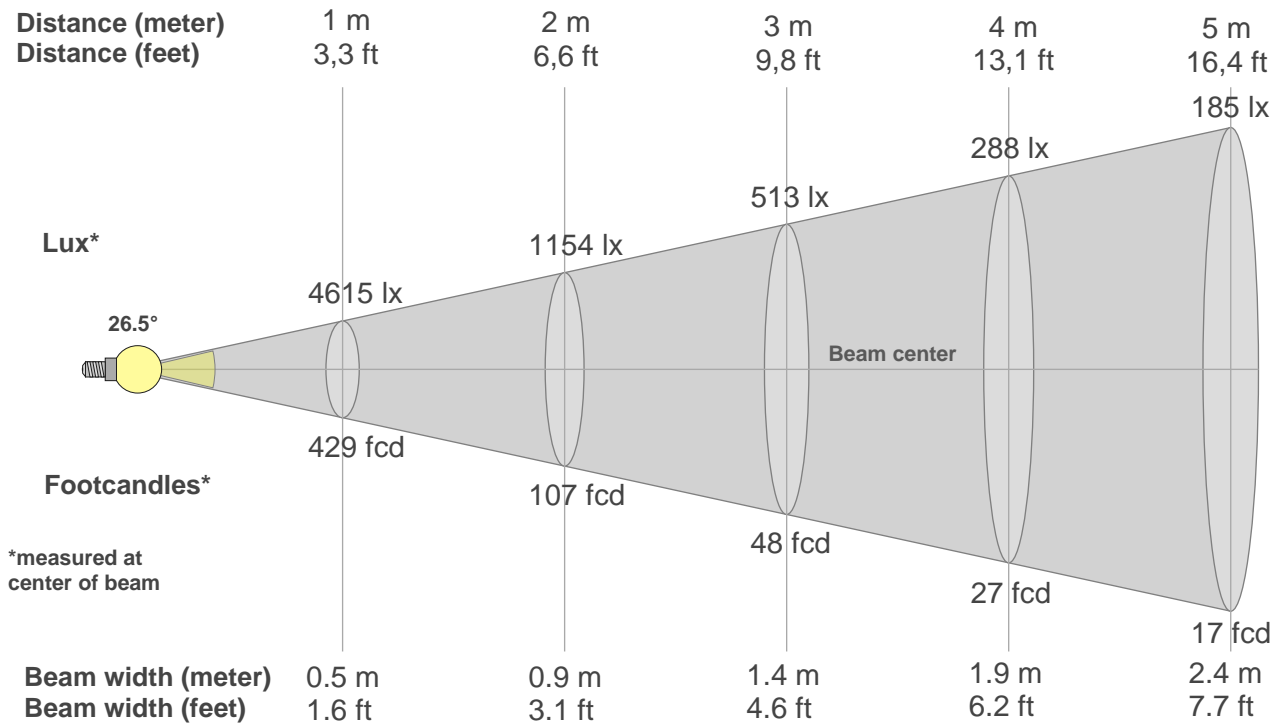
Color distortion



Color Evaluation Sample

www.graffitilighting.com As a result of our continuous improvement, values are subject to change without notice. These are delivered results and can vary +/- 10% from published source data range.

Beam details



Beam intensities from 1-20m

1m	2m	3m	4m	5m	6m	7m	8m	9m	10m	11m	12m	13m	14m	15m	16m	17m	18m	19m	20m
3.3ft	6.6ft	9.8ft	13.1ft	16.4ft	19.7ft	23ft	26.2ft	29.5ft	32.8ft	36.1ft	39.4ft	42.7ft	45.9ft	49.2ft	52.5ft	55.8ft	59.1ft	62.3ft	65.6ft
4615lx	1154lx	513lx	288lx	185lx	128lx	94lx	72lx	57lx	46lx	38lx	32lx	27lx	24lx	21lx	18lx	16lx	14lx	13lx	12lx
428.7fcd	107.2fcd	47.6fcd	26.8fcd	17.1fcd	11.9fcd	8.7fcd	6.7fcd	5.3fcd	4.3fcd	3.5fcd	3fcd	2.5fcd	2.2fcd	1.9fcd	1.7fcd	1.5fcd	1.3fcd	1.2fcd	1.1fcd

Intensities in 0° c-plane

0°	2°	4°	6°	8°	10°	12°	14°	16°	18°	20°	22°	24°	26°	28°	30°	32°	34°	36°	38°
4615	4588	4393	4070	3633	3149	2656	2183	1758	1403	1117	876	673	502	360	258	180	123	84	60
100%	99%	95%	88%	79%	68%	58%	47%	38%	30%	24%	19%	15%	11%	8%	6%	4%	3%	2%	1%

Intensities in 90° c-plane

0°	2°	4°	6°	8°	10°	12°	14°	16°	18°	20°	22°	24°	26°	28°	30°	32°	34°	36°	38°
4615	4501	4256	3903	3478	3016	2553	2123	1739	1411	1138	910	725	559	412	285	185	122	81	54
100%	98%	92%	85%	75%	65%	55%	46%	38%	31%	25%	20%	16%	12%	9%	6%	4%	3%	2%	1%

Intensities in 180° c-plane

0°	2°	4°	6°	8°	10°	12°	14°	16°	18°	20°	22°	24°	26°	28°	30°	32°	34°	36°	38°
4615	4533	4292	3923	3500	3054	2611	2191	1829	1504	1224	984	776	596	443	318	219	146	97	67
100%	98%	93%	85%	76%	66%	57%	47%	40%	33%	27%	21%	17%	13%	10%	7%	5%	3%	2%	1%

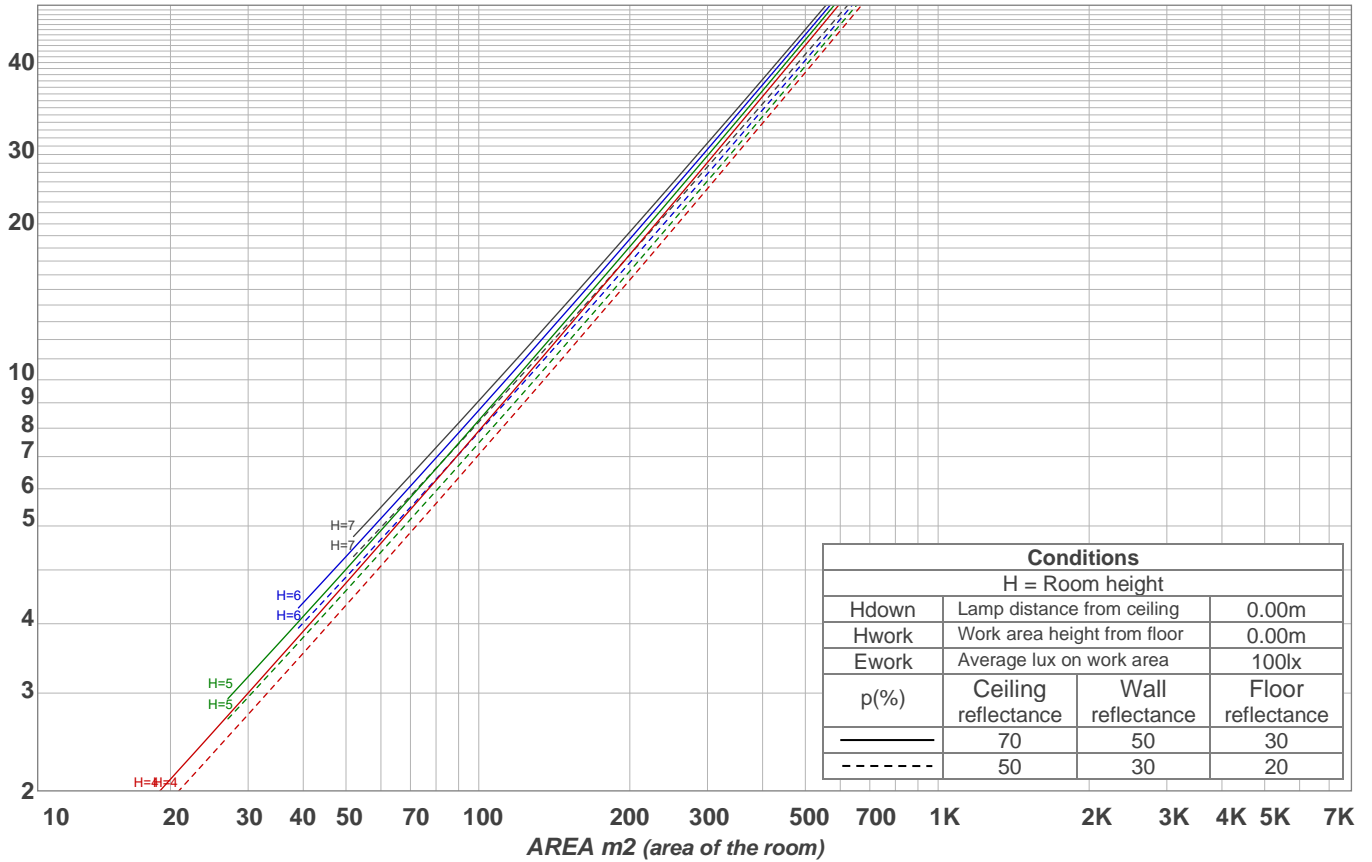
Intensities in 270° c-plane

0°	2°	4°	6°	8°	10°	12°	14°	16°	18°	20°	22°	24°	26°	28°	30°	32°	34°	36°	38°
4615	4509	4290	3956	3536	3057	2568	2118	1720	1379	1097	874	681	512	366	246	161	106	70	48
100%	98%	93%	86%	77%	66%	56%	46%	37%	30%	24%	19%	15%	11%	8%	5%	3%	2%	2%	1%

Beam angle 50%	Field angle 10%	Cutoff angle 2,5%	Intensity ratio in 120° cone	Intensity ratio in 90° cone
26.5°	54.1°	68.7°	99.2%	98.2%

LAMPS (number of lamps)
50

Light planning Luminaire budgetary diagram



Luminaire budgetary diagram AREA m2 (area of the room) Coefficients of Utilization

Ceiling reflectance	80				70				50			30			10			0
Wall reflectance	70	50	30	10	70	50	30	10	50	30	10	50	30	10	50	30	10	0
Floor reflectance	20	20	20	20	20	20	20	20	20	20	20	20	20	20	20	20	20	0
RCR	(RCR: Room Cavity Ratio)																	
	Room Values are expressed as percentage of Lumens delivered to the task surface																	
0	119	119	119	119	116	116	116	116	111	111	111	106	106	106	102	102	102	100
1	115	112	110	108	112	110	108	107	106	105	103	102	101	100	99	98	97	96
2	110	106	103	100	108	105	102	99	102	99	97	99	97	95	96	94	93	92
3	106	101	97	94	104	100	96	93	97	94	92	95	93	91	93	91	89	88
4	103	97	92	89	101	96	92	89	94	90	87	92	89	87	90	88	86	84
5	99	93	88	85	98	92	87	84	90	86	84	89	85	83	87	84	82	81
6	96	89	84	81	94	88	84	81	87	83	80	86	82	80	84	81	79	78
7	93	85	81	78	91	85	81	77	84	80	77	83	79	77	82	79	76	75
8	90	82	78	75	89	82	78	75	81	77	74	80	77	74	79	76	74	73
9	87	80	75	72	86	79	75	72	78	74	72	77	74	71	77	74	71	70
10	84	77	72	69	83	76	72	69	76	72	69	75	72	69	74	71	69	68

Zonal Lumen Summary

0°-10°	10°-20°	20°-30°	30°-40°	40°-50°	50°-60°	60°-70°	70°-80°	80°-90°
361 lm	538 lm	289 lm	71.9 lm	16.3 lm	6.91 lm	4.34 lm	2.72 lm	3.07 lm
90°-100°	100°-110°	110°-120°	120°-130°	130°-140°	140°-150°	150°-160°	160°-170°	170°-180°
0.000 lm	0.000 lm	0.000 lm	0.000 lm	0.000 lm	0.000 lm	0.000 lm	0.000 lm	0.000 lm