

Light efficiency:



Output: 1332 lm

Light quality:

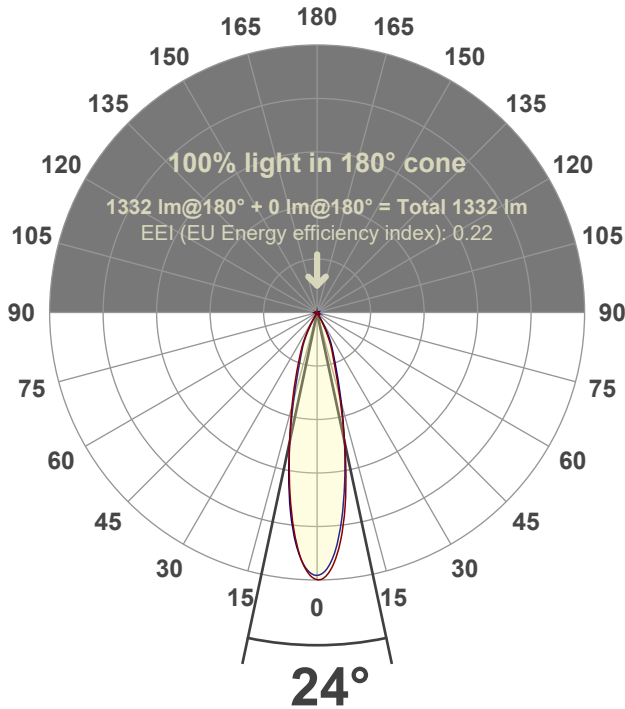


Peak: 5892 cd

Power: 21.3 W



Beam angle



Test number:

GR-F-A20-3019-NF-RD-Rev2

Luminaire Model:

Graffiti Regress Round Fixed Downlight-A20-3019 24° Optic

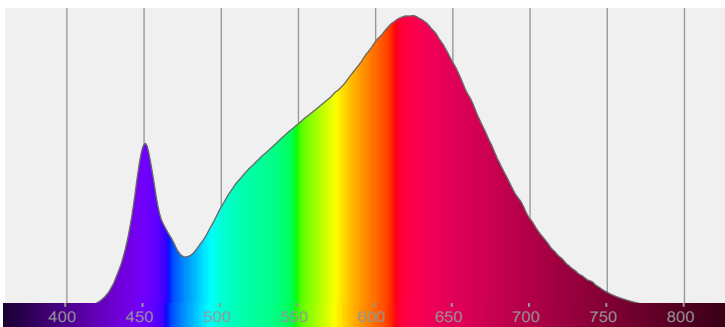
Date and time:

4/28/2022 7:55:07 PM

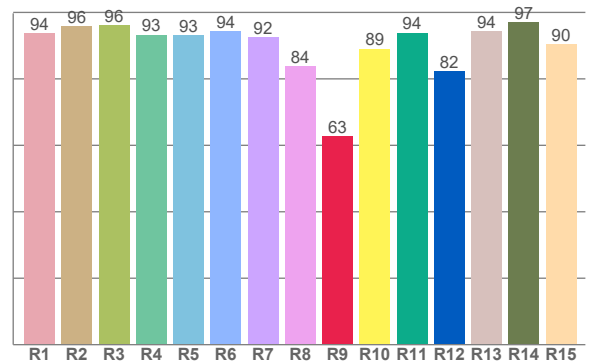
Delivered Lumens

1332

Spectra



CRI: 92.8 (R1-R8)



Color parameters

	Color rendering index	Red component	Color fidelity	Color gamut	Color quality scale	Color coordinate cie 1931	Color coordinate cie 1931	Color coordinate	Color coordinate	Color deviation from black body
	CRI	CRI R9	TM30 R _f	TM30 R _g	CQS	x	y	u	v	Δuv
	92.8	62.8	91.1	101.6	89.9	0.435	0.398	0.252	0.346	-0.0021

R_f 91.1

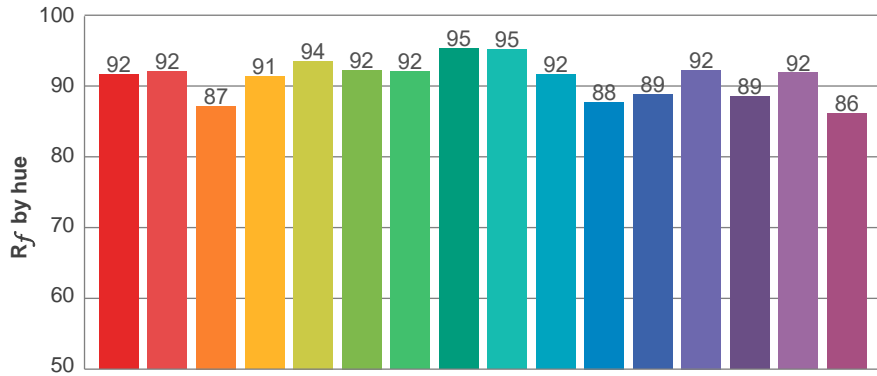
Fidelity index R_f

R_g 101.6

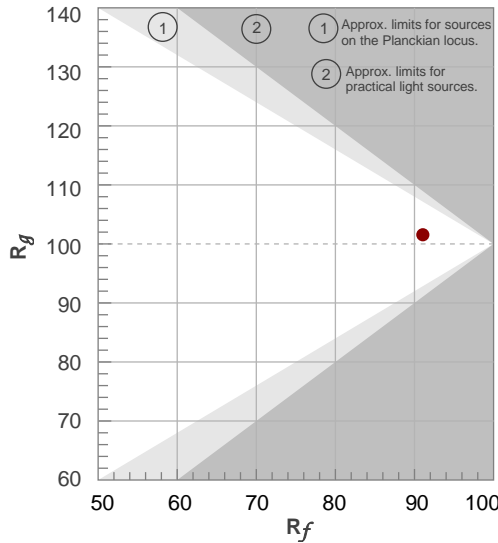
Gammut index R_g

TM30: 91.1

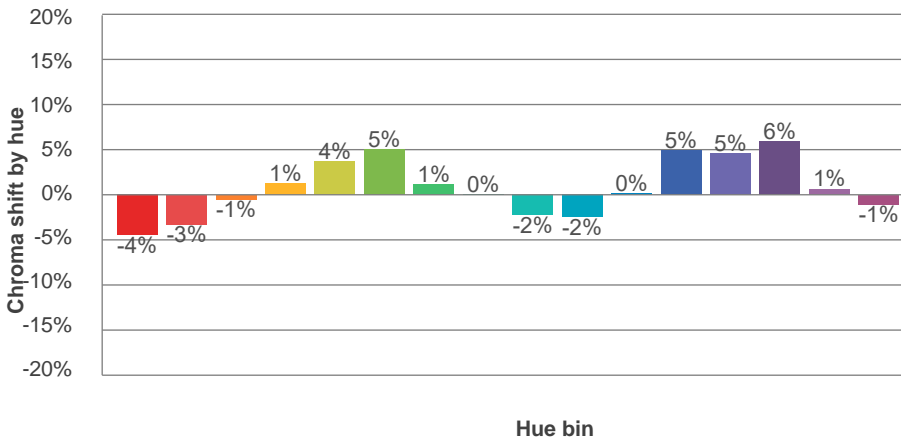
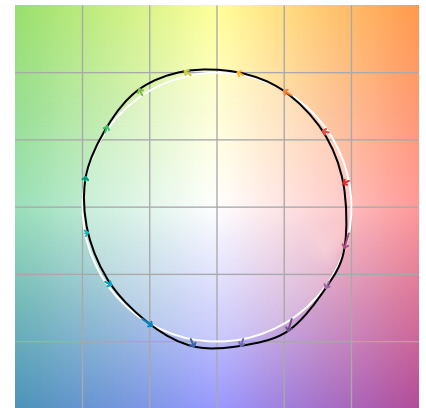
TM-30Color



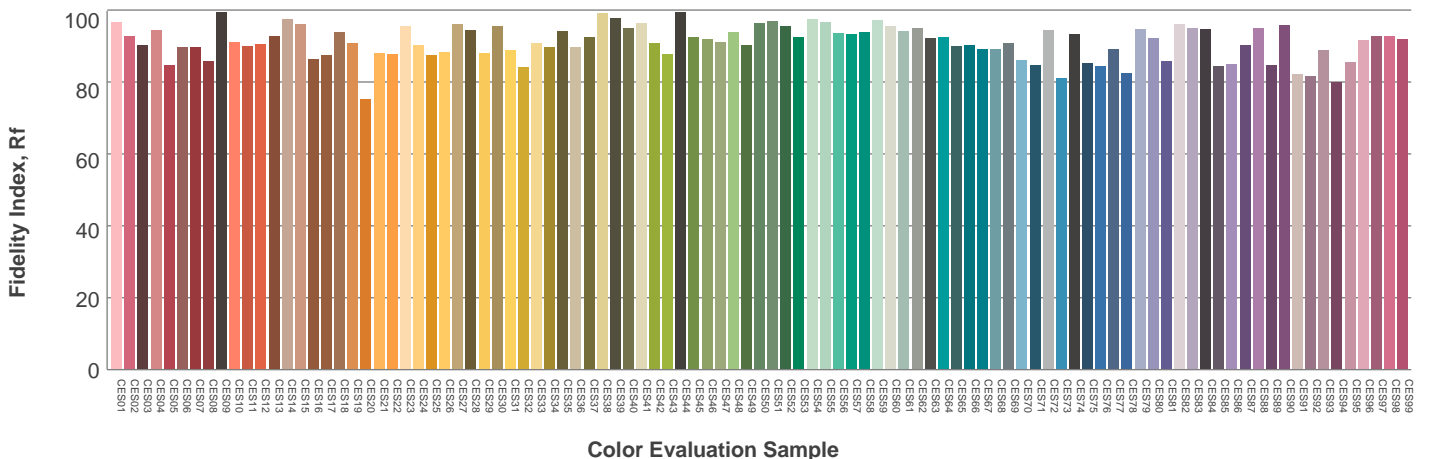
Hue Bin	R _f	Graphic shifts (%)	
		Chroma	Hue
1	92	-4%	-1%
2	92	-3%	3%
3	87	-1%	7%
4	91	1%	4%
5	94	4%	4%
6	92	5%	-1%
7	92	1%	-5%
8	95	0%	-3%
9	95	-2%	0%
10	92	-2%	4%
11	88	0%	9%
12	89	5%	3%
13	92	5%	-3%
14	89	6%	-7%
15	92	1%	-5%
16	86	-1%	-11%



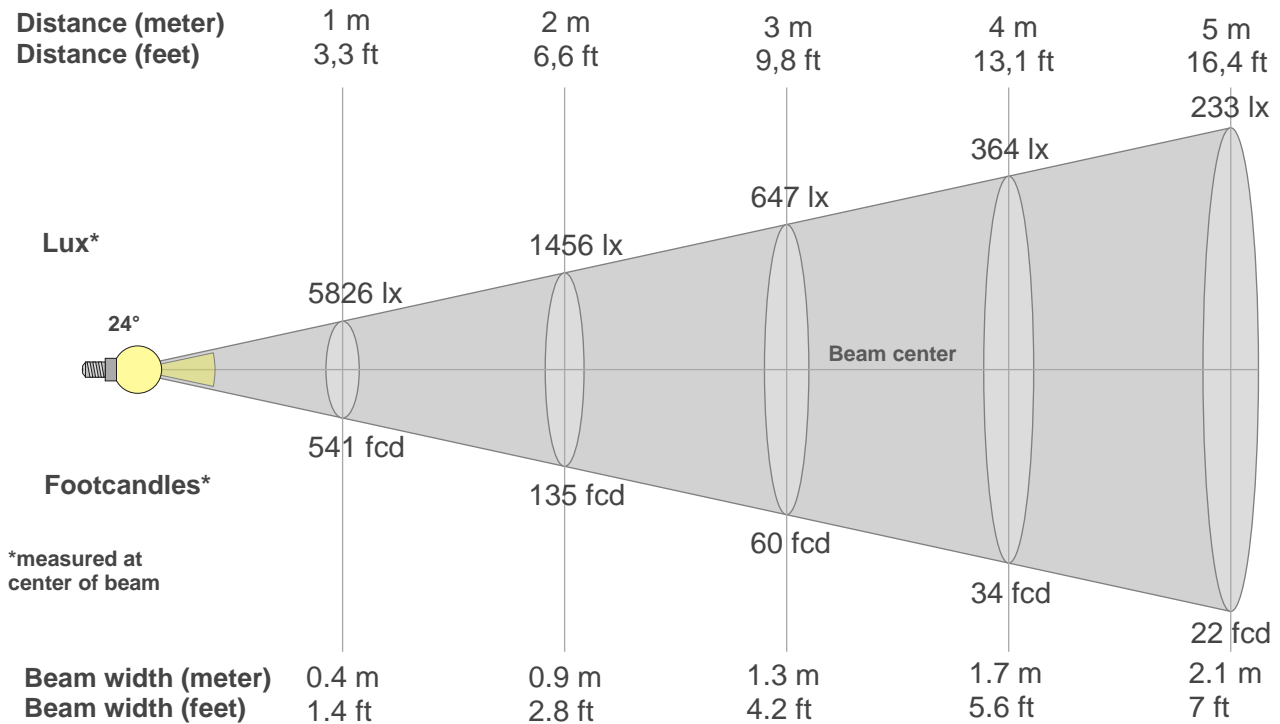
Color vector graphics



Color distortion



Beam details



Beam intensities from 1-20m

1m	2m	3m	4m	5m	6m	7m	8m	9m	10m	11m	12m	13m	14m	15m	16m	17m	18m	19m	20m
3.3ft	6.6ft	9.8ft	13.1ft	16.4ft	19.7ft	23ft	26.2ft	29.5ft	32.8ft	36.1ft	39.4ft	42.7ft	45.9ft	49.2ft	52.5ft	55.8ft	59.1ft	62.3ft	65.6ft
5826lx	1456lx	647lx	364lx	233lx	162lx	119lx	91lx	72lx	58lx	48lx	40lx	34lx	30lx	26lx	23lx	20lx	18lx	16lx	15lx
541.3fcd	135.3fcd	60.1fcd	33.8fcd	21.7fcd	15fcd	11fcd	8.5fcd	6.7fcd	5.4fcd	4.5fcd	3.8fcd	3.2fcd	2.8fcd	2.4fcd	2.1fcd	1.9fcd	1.7fcd	1.5fcd	1.4fcd

Intensities in 0° c-plane

0°	2°	4°	6°	8°	10°	12°	14°	16°	18°	20°	22°	24°	26°	28°	30°	32°	34°	36°	38°
5826	5786	5500	5034	4406	3680	2943	2275	1724	1304	1039	853	651	448	263	108	25	14	12	10
100%	99%	94%	86%	76%	63%	51%	39%	30%	22%	18%	15%	11%	8%	5%	2%	0%	0%	0%	0%

Intensities in 90° c-plane

0°	2°	4°	6°	8°	10°	12°	14°	16°	18°	20°	22°	24°	26°	28°	30°	32°	34°	36°	38°
5826	5690	5346	4826	4208	3555	2919	2334	1848	1457	1163	945	772	602	385	189	65	15	11	8
100%	98%	92%	83%	72%	61%	50%	40%	32%	25%	20%	16%	13%	10%	7%	3%	1%	0%	0%	0%

Intensities in 180° c-plane

0°	2°	4°	6°	8°	10°	12°	14°	16°	18°	20°	22°	24°	26°	28°	30°	32°	34°	36°	38°
5826	5728	5391	4859	4221	3560	2944	2405	1947	1555	1254	1017	822	630	423	255	96	28	10	8
100%	98%	93%	83%	72%	61%	51%	41%	33%	27%	22%	17%	14%	11%	7%	4%	2%	0%	0%	0%

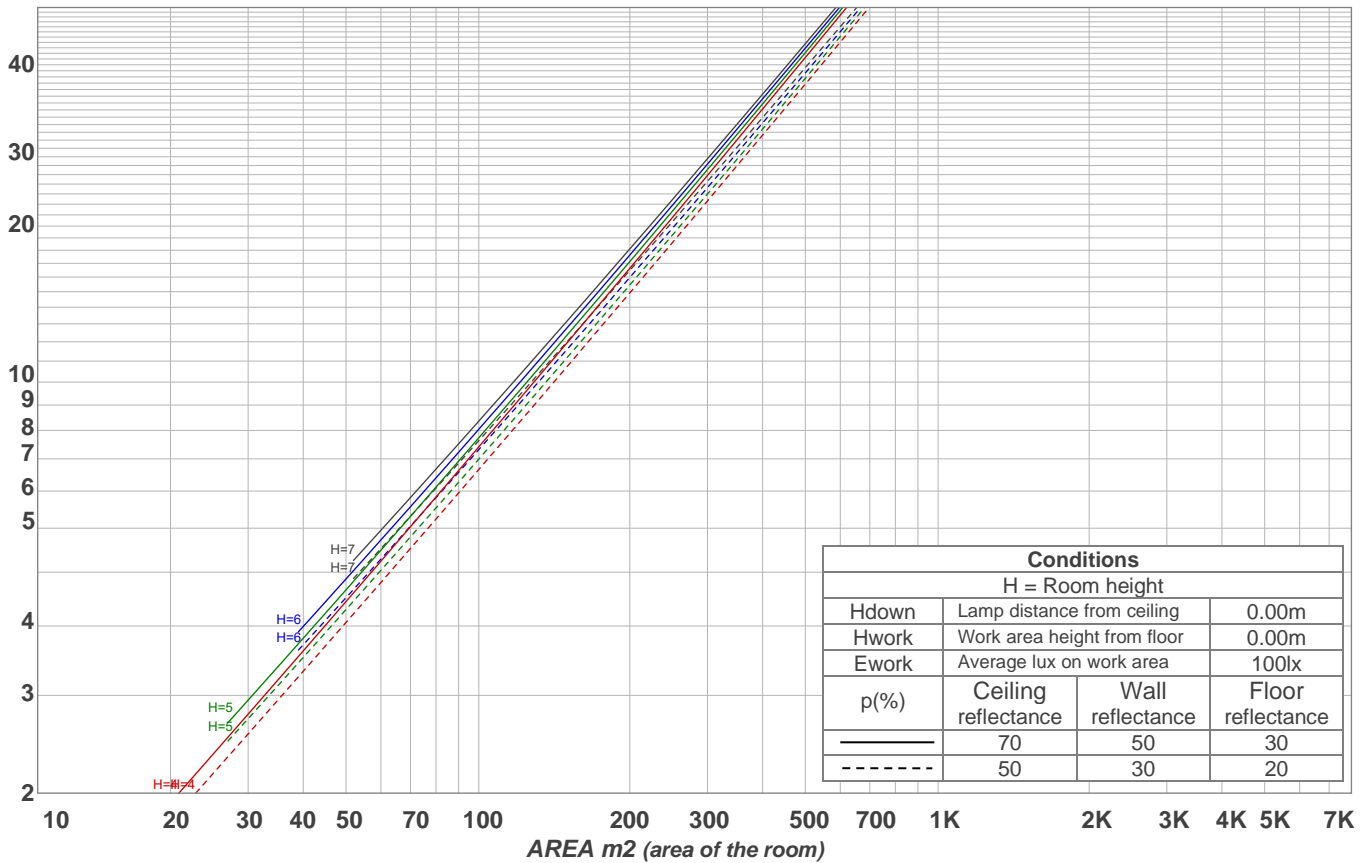
Intensities in 270° c-plane

0°	2°	4°	6°	8°	10°	12°	14°	16°	18°	20°	22°	24°	26°	28°	30°	32°	34°	36°	38°
5826	5679	5380	4913	4313	3621	2922	2308	1791	1384	1094	894	725	519	307	132	29	13	10	8
100%	97%	92%	84%	74%	62%	50%	40%	31%	24%	19%	15%	12%	9%	5%	2%	1%	0%	0%	0%

Beam angle 50%	Field angle 10%	Cutoff angle 2,5%	Intensity ratio in 120° cone	Intensity ratio in 90° cone
24°	51.3°	60.5°	99.4%	99.1%

LAMPS (number of lamps)
50

Light planning Luminaire budgetary diagram



Luminaire budgetary diagram AREA m2 (area of the room) Coefficients of Utilization

Ceiling reflectance	80				70				50			30			10			0			
Wall reflectance	70	50	30	10	70	50	30	10	50	30	10	50	30	10	50	30	10	50	30	10	0
Floor reflectance	20	20	20	20	20	20	20	20	20	20	20	20	20	20	20	20	20	20	20	20	0
RCR	(RCR: Room Cavity Ratio)																				
	Room Values are expressed as percentage of Lumens delivered to the task surface																				
0	119	119	119	119	116	116	116	116	111	111	111	106	106	106	102	102	102	100	100	100	
1	115	113	111	109	112	111	109	107	107	105	104	103	102	101	100	99	98	98	96	96	
2	111	107	104	102	109	106	103	101	103	100	98	100	98	96	97	96	94	94	92	92	
3	107	103	99	96	106	101	98	95	99	96	94	97	94	92	95	93	91	91	89	88	
4	104	99	95	92	103	98	94	91	96	92	90	94	91	89	92	90	88	88	86	85	
5	101	95	91	88	100	94	90	87	92	89	87	91	88	86	90	87	85	85	83	82	
6	98	92	87	84	97	91	87	84	90	86	84	88	85	83	87	85	83	83	81	80	
7	95	89	84	81	94	88	84	81	87	83	81	86	83	80	85	82	80	80	78	77	
8	92	86	82	79	91	85	81	79	84	81	78	83	80	78	83	80	78	78	76	75	
9	90	83	79	76	89	83	79	76	82	78	76	81	78	76	81	78	75	75	73	72	
10	88	81	77	74	87	80	77	74	80	76	74	79	76	74	78	76	73	72	70	69	

Zonal Lumen Summary

0°-10°	10°-20°	20°-30°	30°-40°	40°-50°	50°-60°	60°-70°	70°-80°	80°-90°
443 lm	575 lm	282 lm	18.7 lm	3.59 lm	2.31 lm	2.43 lm	2.21 lm	3.10 lm
90°-100°	100°-110°	110°-120°	120°-130°	130°-140°	140°-150°	150°-160°	160°-170°	170°-180°
0.000 lm	0.000 lm	0.000 lm	0.000 lm	0.000 lm	0.000 lm	0.000 lm	0.000 lm	0.000 lm