

Light efficiency:



Output: 1361 lm

Light quality:

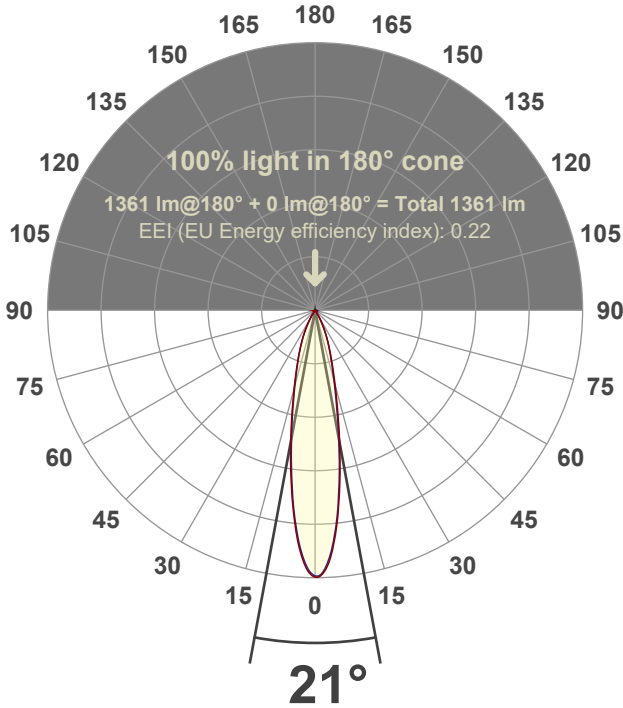


Peak: 6408 cd

Power: 21.3 W



Beam angle



Test number:

GR-F-A20-3019-SP-RD-91A-Rev2

Luminaire Model:

Graffiti Regress Round Fixed Downlight-A20-3019 15° Optic-Solite

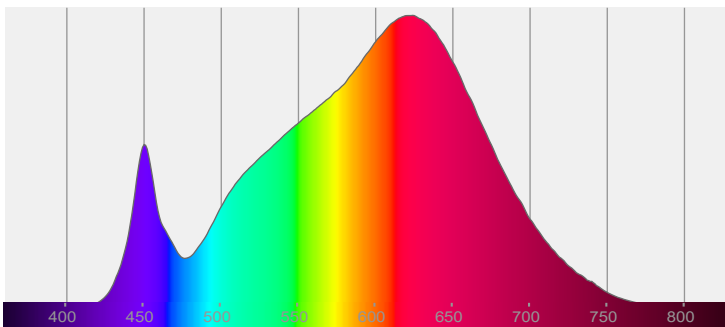
Date and time:

4/28/2022 7:18:47 PM

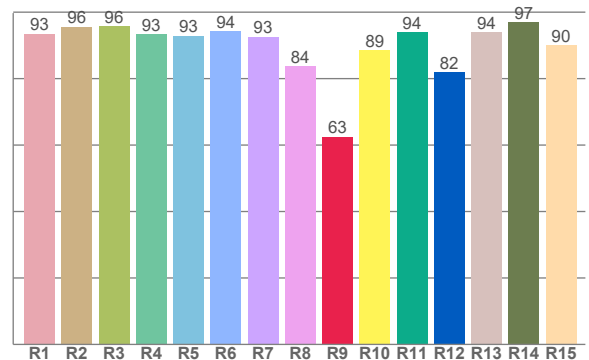
Delivered Lumens

1361

Spectra



CRI: 92.7 (R1-R8)



Color parameters

Color rendering index	Red component	Color fidelity	Color gamut	Color quality scale	Color coordinate cie 1931	Color coordinate cie 1931	Color coordinate	Color coordinate	Color divition from black body
CRI	CRI R9	TM30 R _f	TM30 R _g	CQS	x	y	u	v	Δuv
92.7	62.5	91.0	101.5	89.9	0.436	0.400	0.252	0.346	-0.0017

R_f 91.0

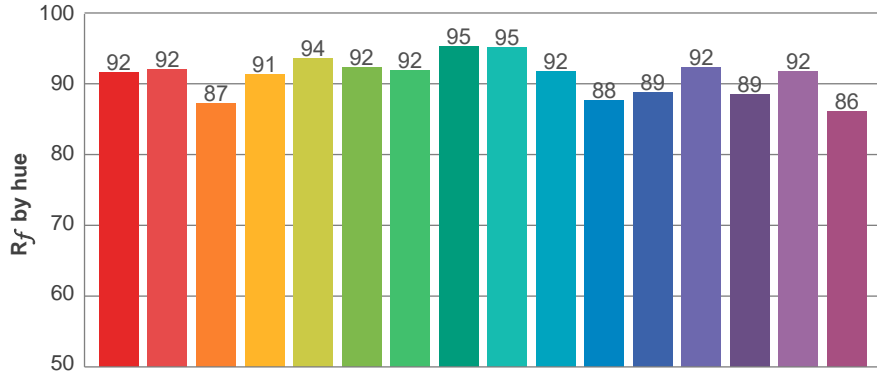
Fidelity index R_f

R_g 101.5

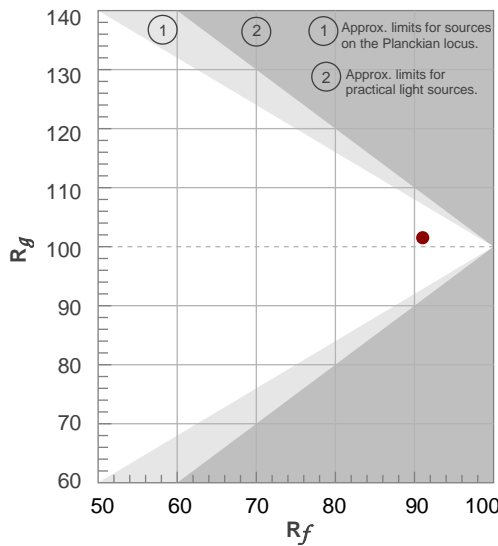
Gammut index R_g

TM30: 91.0

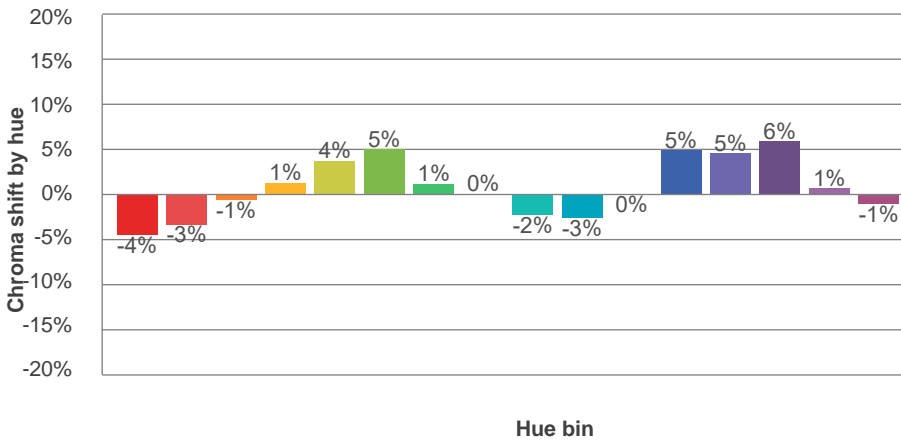
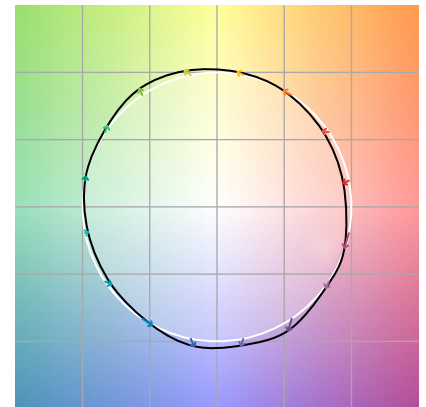
TM-30Color



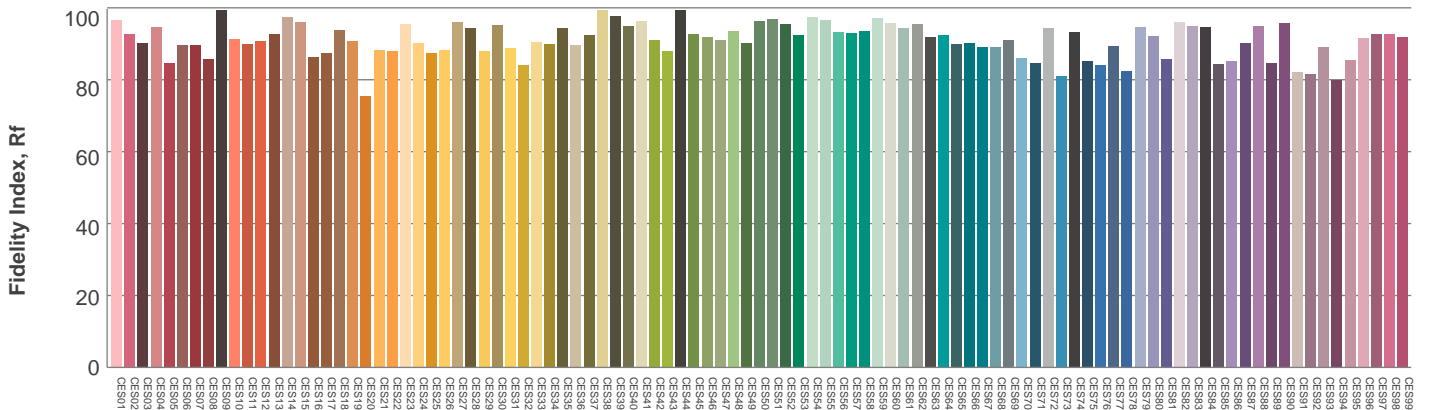
Hue Bin	R_f	Graphic shifts (%)	
		Chroma	Hue
1	92	-4%	-1%
2	92	-3%	3%
3	87	-1%	7%
4	91	1%	5%
5	94	4%	4%
6	92	5%	-1%
7	92	1%	-5%
8	95	0%	-3%
9	95	-2%	0%
10	92	-3%	4%
11	88	0%	9%
12	89	5%	4%
13	92	5%	-3%
14	89	6%	-7%
15	92	1%	-5%
16	86	-1%	-11%



Color vector graphics

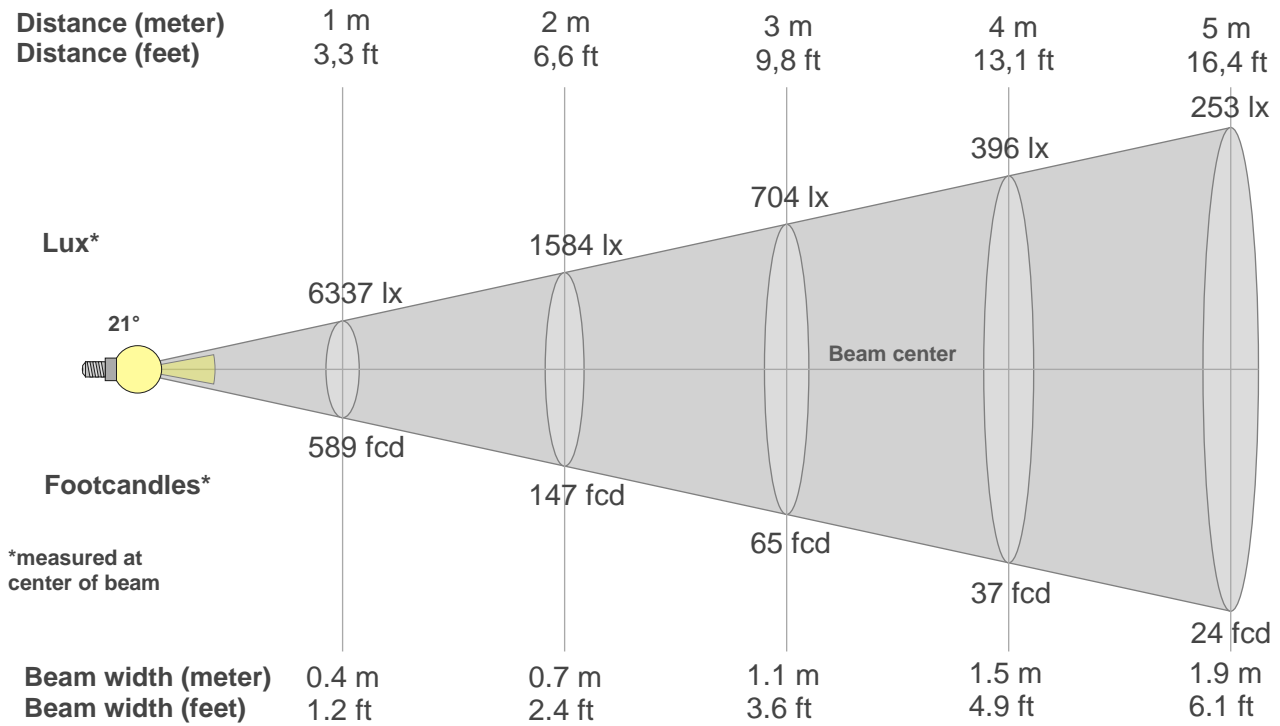


Color distortion



Color Evaluation Sample

Beam details



Beam intensities from 1-20m

1m	2m	3m	4m	5m	6m	7m	8m	9m	10m	11m	12m	13m	14m	15m	16m	17m	18m	19m	20m
3.3ft	6.6ft	9.8ft	13.1ft	16.4ft	19.7ft	23ft	26.2ft	29.5ft	32.8ft	36.1ft	39.4ft	42.7ft	45.9ft	49.2ft	52.5ft	55.8ft	59.1ft	62.3ft	65.6ft
6337lx	1584lx	704lx	396lx	253lx	176lx	129lx	99lx	78lx	63lx	52lx	44lx	37lx	32lx	28lx	25lx	22lx	20lx	18lx	16lx
588.8fcd	147.2fcd	65.4fcd	36.8fcd	23.6fcd	16.4fcd	12fcd	9.2fcd	7.3fcd	5.9fcd	4.9fcd	4.1fcd	3.5fcd	3fcd	2.6fcd	2.3fcd	2fcd	1.8fcd	1.6fcd	1.5fcd

Intensities in 0° c-plane

0°	2°	4°	6°	8°	10°	12°	14°	16°	18°	20°	22°	24°	26°	28°	30°	32°	34°	36°	38°
6337	6231	5795	5099	4264	3454	2732	2134	1671	1318	1055	839	652	488	351	250	174	119	81	55
100%	98%	91%	80%	67%	55%	43%	34%	26%	21%	17%	13%	10%	8%	6%	4%	3%	2%	1%	1%

Intensities in 90° c-plane

0°	2°	4°	6°	8°	10°	12°	14°	16°	18°	20°	22°	24°	26°	28°	30°	32°	34°	36°	38°
6337	6191	5732	5022	4165	3335	2607	2017	1566	1260	1026	829	655	499	358	246	163	107	70	44
100%	98%	90%	79%	66%	53%	41%	32%	25%	20%	16%	13%	10%	8%	6%	4%	3%	2%	1%	1%

Intensities in 180° c-plane

0°	2°	4°	6°	8°	10°	12°	14°	16°	18°	20°	22°	24°	26°	28°	30°	32°	34°	36°	38°
6337	6169	5664	4924	4158	3421	2757	2191	1768	1434	1164	940	748	579	434	312	214	141	93	62
100%	97%	89%	78%	66%	54%	43%	35%	28%	23%	18%	15%	12%	9%	7%	5%	3%	2%	1%	1%

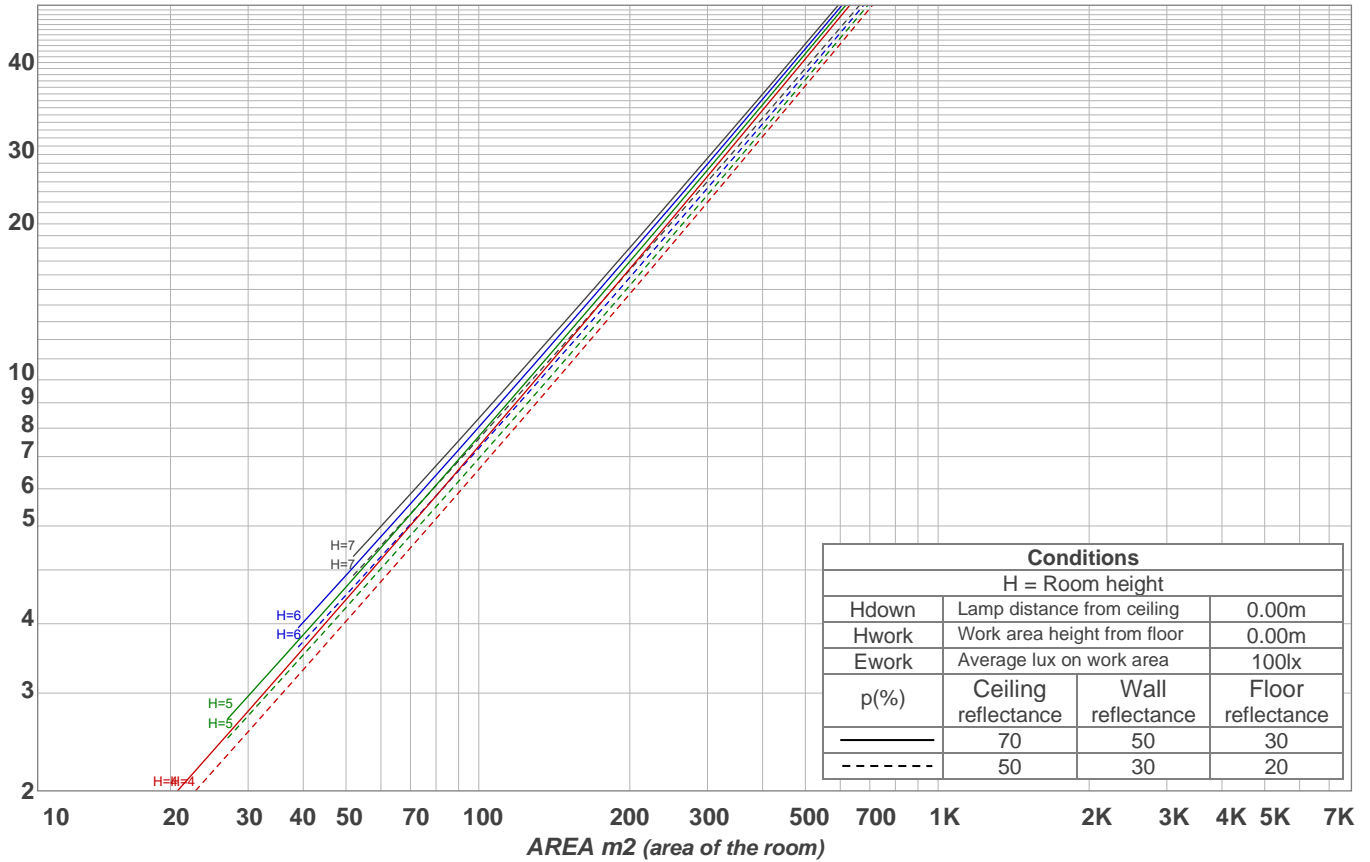
Intensities in 270° c-plane

0°	2°	4°	6°	8°	10°	12°	14°	16°	18°	20°	22°	24°	26°	28°	30°	32°	34°	36°	38°
6337	6094	5577	4851	4056	3315	2664	2120	1692	1388	1139	927	737	563	410	287	194	127	82	54
100%	96%	88%	77%	64%	52%	42%	33%	27%	22%	18%	15%	12%	9%	6%	5%	3%	2%	1%	1%

Beam angle 50%	Field angle 10%	Cutoff angle 2,5%	Intensity ratio in 120° cone	Intensity ratio in 90° cone
21°	49.4°	65.4°	99.3%	98.3%

LAMPS (number of lamps)
50

Light planning Luminaire budgetary diagram



Luminaire budgetary diagram AREA m2 (area of the room) Coefficients of Utilization

Ceiling reflectance	80				70				50			30			10			0
Wall reflectance	70	50	30	10	70	50	30	10	50	30	10	50	30	10	50	30	10	0
Floor reflectance	20	20	20	20	20	20	20	20	20	20	20	20	20	20	20	20	20	0
RCR	(RCR: Room Cavity Ratio) Room Values are expressed as percentage of Lumens delivered to the task surface																	
0	119	119	119	119	116	116	116	116	111	111	111	106	106	106	102	102	102	100
1	115	112	110	109	112	110	108	107	106	105	104	103	102	101	99	98	98	96
2	111	107	104	101	109	105	102	100	102	100	98	99	97	96	96	95	94	92
3	107	102	98	95	105	101	97	94	98	95	93	96	93	91	94	92	90	89
4	103	97	93	90	102	96	93	90	94	91	89	93	90	88	91	89	87	85
5	100	94	89	86	98	93	89	86	91	88	85	90	87	84	88	86	84	82
6	97	90	86	82	95	89	85	82	88	84	82	87	84	81	86	83	81	80
7	94	87	82	79	93	86	82	79	85	81	79	84	81	78	83	80	78	77
8	91	84	80	77	90	83	79	76	83	79	76	82	78	76	81	78	76	75
9	88	81	77	74	87	81	77	74	80	76	74	79	76	73	79	75	73	72
10	86	79	74	72	85	78	74	72	78	74	71	77	74	71	76	73	71	70

Zonal Lumen Summary

0°-10°	10°-20°	20°-30°	30°-40°	40°-50°	50°-60°	60°-70°	70°-80°	80°-90°
446 lm	531 lm	281 lm	70.7 lm	15.4 lm	6.66 lm	4.15 lm	2.84 lm	3.11 lm

90°-100°	100°-110°	110°-120°	120°-130°	130°-140°	140°-150°	150°-160°	160°-170°	170°-180°
0.000 lm	0.000 lm	0.000 lm	0.000 lm	0.000 lm	0.000 lm	0.000 lm	0.000 lm	0.000 lm

www.graffitilighting.com As a result of our continuous improvement, values are subject to change without notice. These are delivered results and can vary +/- 10% from published source data range.