

Light efficiency:



Output: 1411 lm

Light quality:

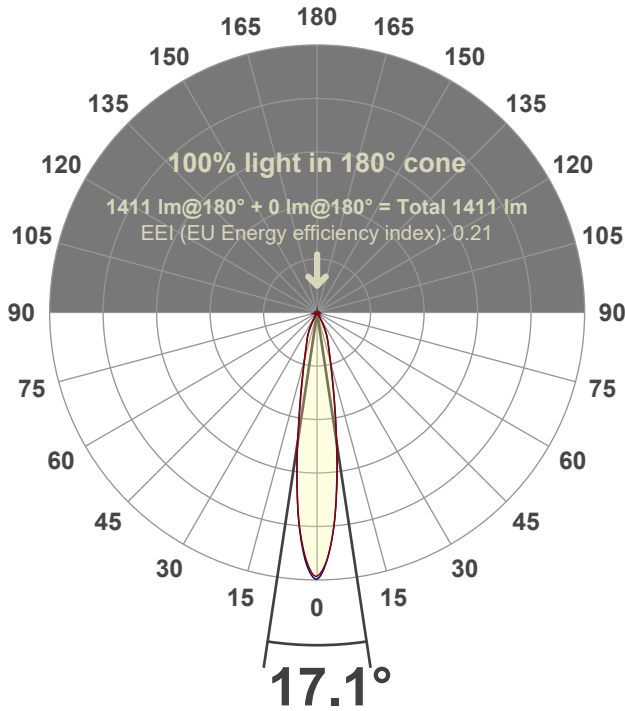


Peak: 9406 cd

Power: 21.3 W



Beam angle



Test number:

GR-F-A20-3019-SP-RD-Rev2

Luminaire Model:

Graffiti Regress Round Fixed Downlight-A20-3019 15° Optic

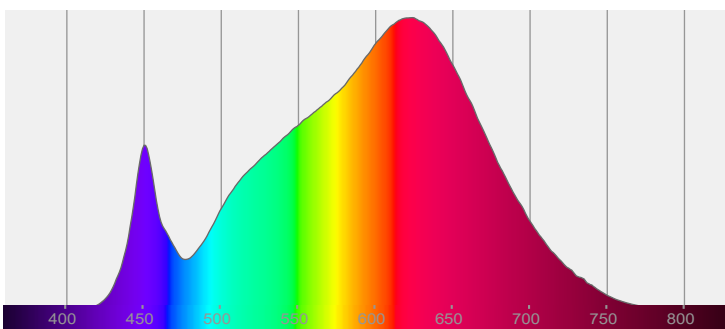
Date and time:

4/28/2022 7:24:21 PM

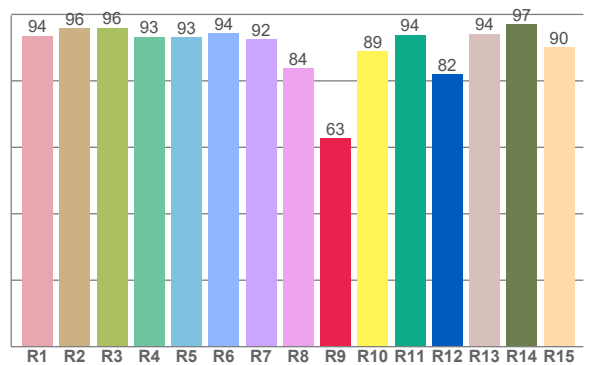
Delivered Lumens

1411

Spectra



CRI: 92.8 (R1-R8)



Color parameters

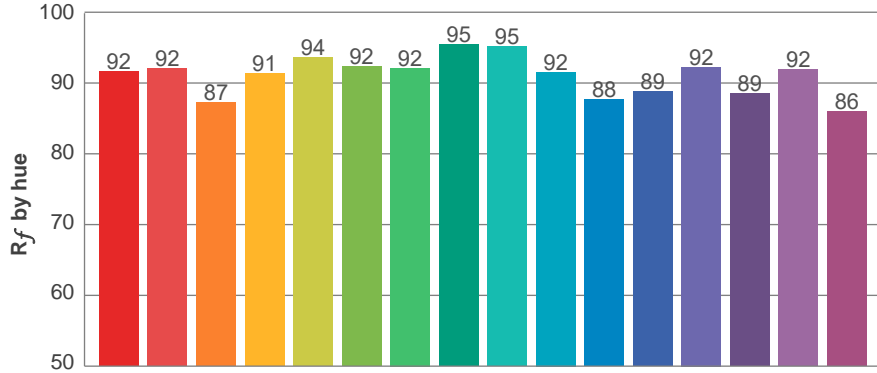
	Color rendering index	Red component	Color fidelity	Color gamut	Color quality scale	Color coordinate cie 1931	Color coordinate cie 1931	Color coordinate	Color coordinate	Color deviation from black body
	CRI	CRI R9	TM30 R _f	TM30 R _g	CQS	x	y	u	v	Δuv
	92.8	62.6	91.1	101.5	89.9	0.435	0.399	0.252	0.346	-0.0019

R_f 91.1
Fidelity index R_f

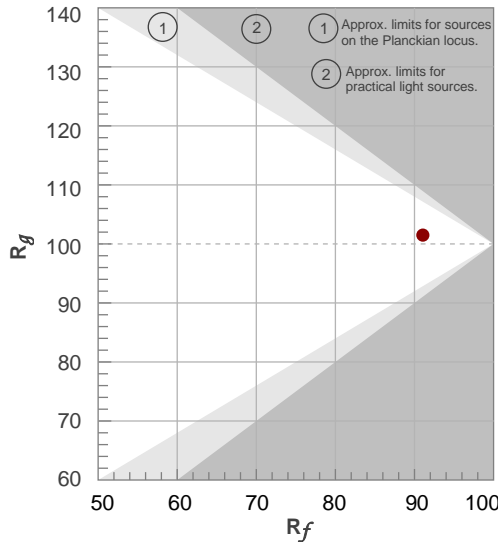
R_g 101.5
Gammut index R_g

TM30: 91.1

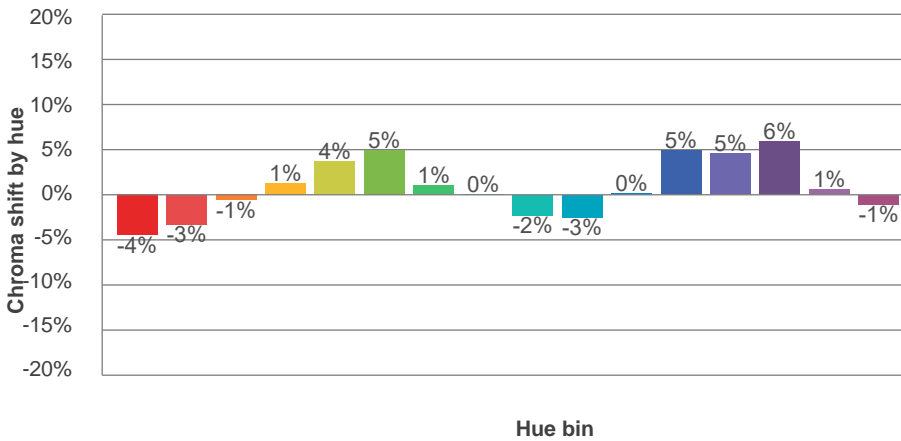
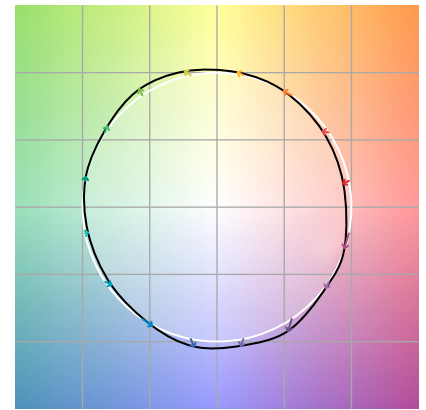
TM-30Color



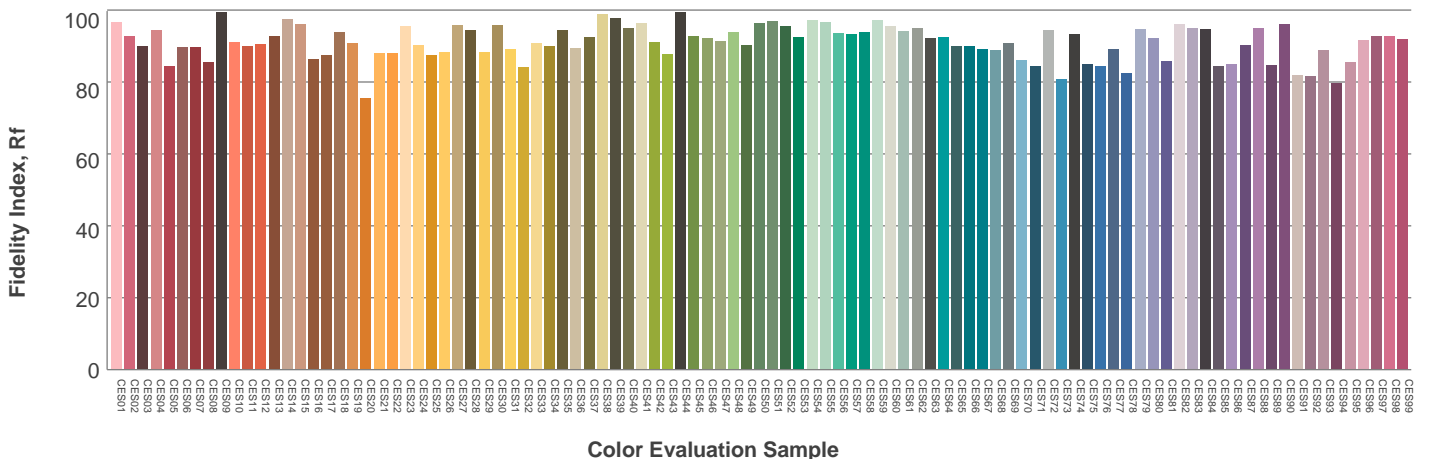
Hue Bin	R_f	Graphic shifts (%)	
		Chroma	Hue
1	92	-4%	-1%
2	92	-3%	3%
3	87	-1%	7%
4	91	1%	4%
5	94	4%	4%
6	92	5%	-1%
7	92	1%	-5%
8	95	0%	-3%
9	95	-2%	0%
10	92	-3%	4%
11	88	0%	9%
12	89	5%	4%
13	92	5%	-3%
14	89	6%	-7%
15	92	1%	-5%
16	86	-1%	-11%



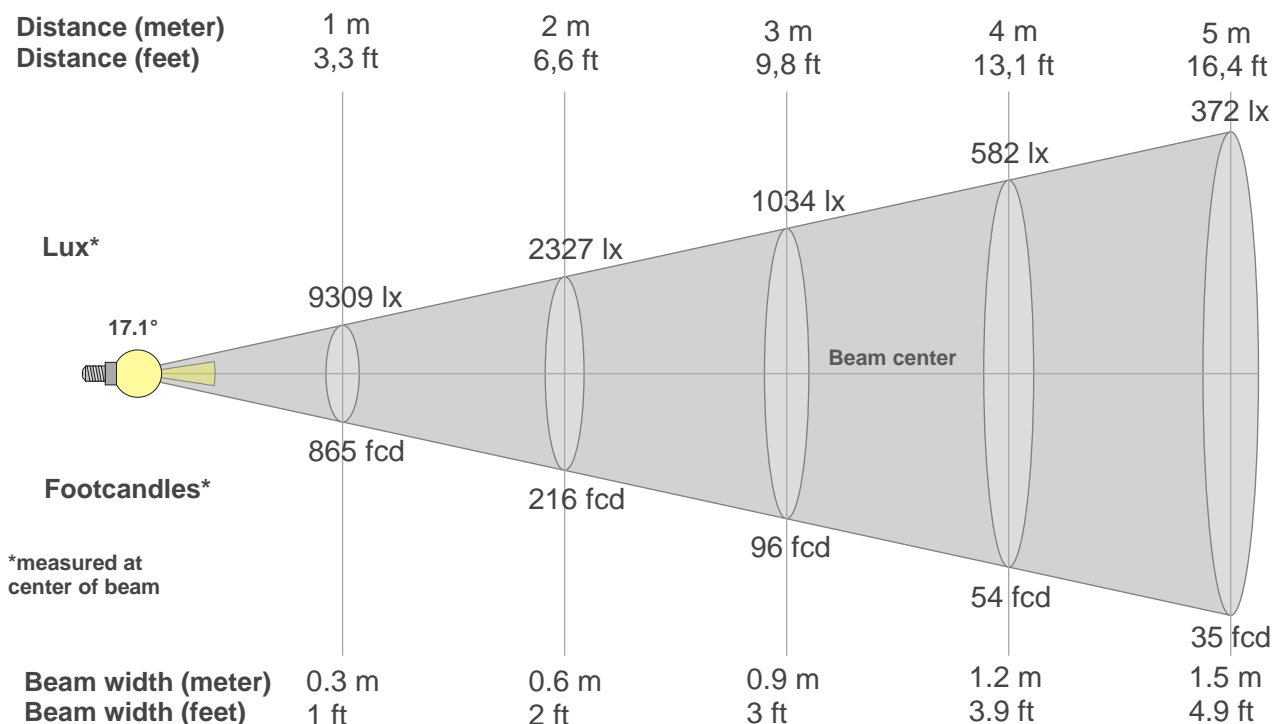
Color vector graphics



Color distortion



Beam details



Beam intensities from 1-20m

1m	2m	3m	4m	5m	6m	7m	8m	9m	10m	11m	12m	13m	14m	15m	16m	17m	18m	19m	20m
3.3ft	6.6ft	9.8ft	13.1ft	16.4ft	19.7ft	23ft	26.2ft	29.5ft	32.8ft	36.1ft	39.4ft	42.7ft	45.9ft	49.2ft	52.5ft	55.8ft	59.1ft	62.3ft	65.6ft
9309lx	2327lx	1034lx	582lx	372lx	259lx	190lx	145lx	115lx	93lx	77lx	65lx	55lx	47lx	41lx	36lx	32lx	29lx	26lx	23lx
864.8fcd	216.2fcd	96.1fcd	54.1fcd	34.6fcd	24fcd	17.6fcd	13.5fcd	10.7fcd	8.6fcd	7.1fcd	6fcd	5.1fcd	4.4fcd	3.8fcd	3.4fcd	3fcd	2.7fcd	2.4fcd	2.2fcd

Intensities in 0° c-plane

0°	2°	4°	6°	8°	10°	12°	14°	16°	18°	20°	22°	24°	26°	28°	30°	32°	34°	36°	38°
9309	8823	7819	6517	5106	3798	2808	2143	1685	1367	1136	944	758	536	350	186	51	13	7	6
100%	95%	84%	70%	55%	41%	30%	23%	18%	15%	12%	10%	8%	6%	4%	2%	1%	0%	0%	0%

Intensities in 90° c-plane

0°	2°	4°	6°	8°	10°	12°	14°	16°	18°	20°	22°	24°	26°	28°	30°	32°	34°	36°	38°
9309	8816	7804	6480	5039	3710	2757	2114	1666	1357	1137	966	792	604	401	204	48	16	8	6
100%	95%	84%	70%	54%	40%	30%	23%	18%	15%	12%	10%	9%	6%	4%	2%	1%	0%	0%	0%

Intensities in 180° c-plane

0°	2°	4°	6°	8°	10°	12°	14°	16°	18°	20°	22°	24°	26°	28°	30°	32°	34°	36°	38°
9309	8839	7931	6640	5107	3683	2718	2040	1575	1260	1050	889	711	511	316	172	45	14	7	6
100%	95%	85%	71%	55%	40%	29%	22%	17%	14%	11%	10%	8%	5%	3%	2%	0%	0%	0%	0%

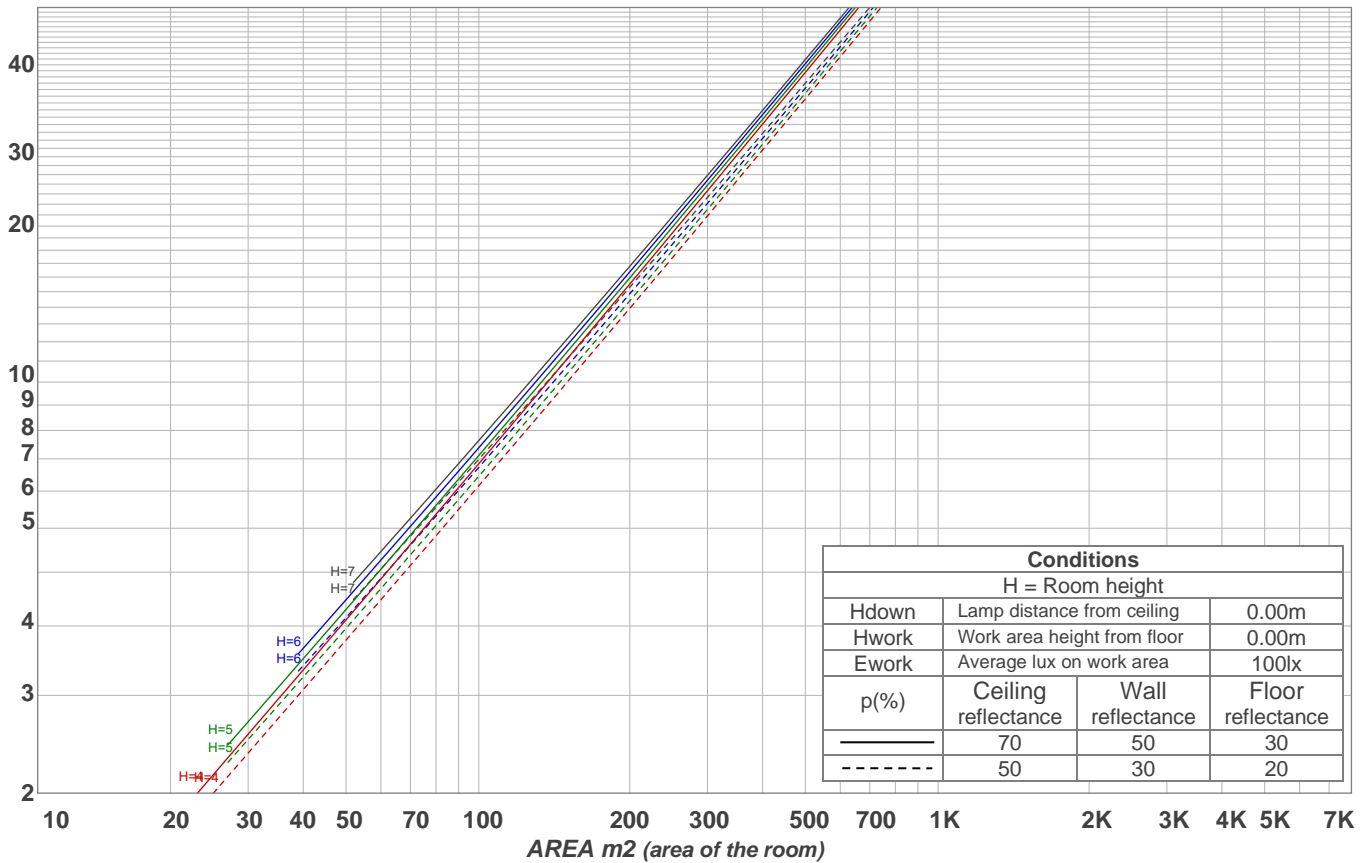
Intensities in 270° c-plane

0°	2°	4°	6°	8°	10°	12°	14°	16°	18°	20°	22°	24°	26°	28°	30°	32°	34°	36°	38°
9309	8966	7998	6633	5074	3587	2620	1988	1553	1256	1054	888	701	487	276	106	16	10	7	6
100%	96%	86%	71%	55%	39%	28%	21%	17%	13%	11%	10%	8%	5%	3%	1%	0%	0%	0%	0%

Beam angle 50%	Field angle 10%	Cutoff angle 2,5%	Intensity ratio in 120° cone	Intensity ratio in 90° cone
17.1°	43.6°	58.3°	99.3%	98.9%

LAMPS (number of lamps)
50

Light planning Luminaire budgetary diagram



Luminaire budgetary diagram AREA m2 (area of the room) Coefficients of Utilization

Ceiling reflectance	80				70				50			30			10			0			
Wall reflectance	70	50	30	10	70	50	30	10	50	30	10	50	30	10	50	30	10	50	30	10	0
Floor reflectance	20	20	20	20	20	20	20	20	20	20	20	20	20	20	20	20	20	20	20	20	0
RCR	(RCR: Room Cavity Ratio)																				
	Room Values are expressed as percentage of Lumens delivered to the task surface																				
0	119	119	119	119	116	116	116	116	111	111	111	106	106	106	102	102	102	100	100	100	
1	115	113	111	109	113	111	109	107	107	105	104	103	102	101	100	99	98	98	97	97	
2	111	108	105	102	109	106	103	101	103	101	99	100	98	97	97	96	95	95	94	93	
3	108	103	100	97	106	102	99	96	100	97	95	97	95	93	95	93	92	91	90	89	
4	105	99	96	93	103	98	95	92	96	93	91	95	92	90	93	91	89	88	87	86	
5	102	96	92	89	100	95	92	89	94	90	88	92	89	87	91	88	87	85	84	83	
6	99	93	89	86	98	92	88	86	91	88	85	90	87	85	89	86	84	83	82	81	
7	96	90	86	83	95	90	86	83	89	85	83	87	85	82	87	84	82	81	80	79	
8	94	88	84	81	93	87	83	81	86	83	80	85	82	80	85	82	80	79	78	77	
9	92	85	81	79	91	85	81	79	84	81	78	83	80	78	83	80	78	77	76	75	
10	89	83	79	77	89	83	79	77	82	79	76	81	78	76	81	78	76	75	74	73	

Zonal Lumen Summary

0°-10°	10°-20°	20°-30°	30°-40°	40°-50°	50°-60°	60°-70°	70°-80°	80°-90°
570 lm	530 lm	279 lm	16.2 lm	3.36 lm	2.80 lm	2.79 lm	3.67 lm	3.99 lm
90°-100°	100°-110°	110°-120°	120°-130°	130°-140°	140°-150°	150°-160°	160°-170°	170°-180°
0.000 lm	0.000 lm	0.000 lm	0.000 lm	0.000 lm	0.000 lm	0.000 lm	0.000 lm	0.000 lm