

Light efficiency:



Output: 1378 lm

Light quality:

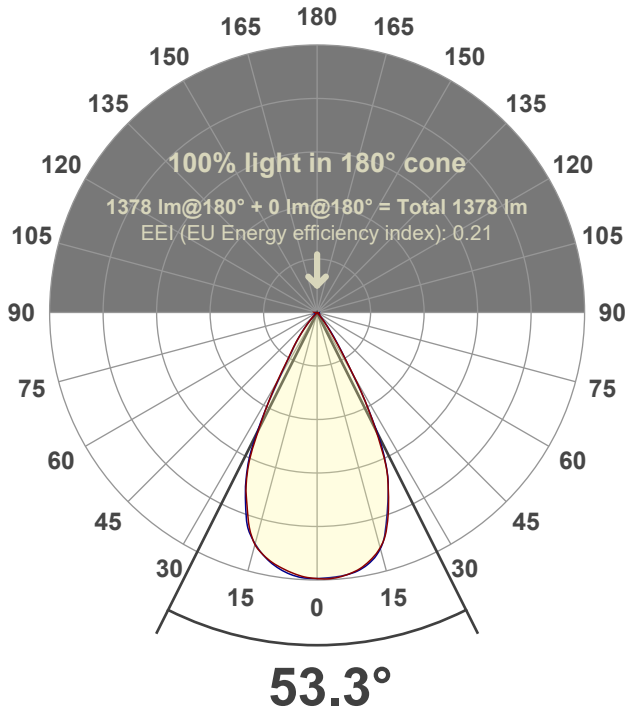


Peak: 1953 cd

Power: 21.3 W



Beam angle



Test number:

GR-F-A20-3019-WF-RD-Rev2

Luminaire Model:

Graffiti Regress Round Fixed Downlight-A20-3019 60° Optic

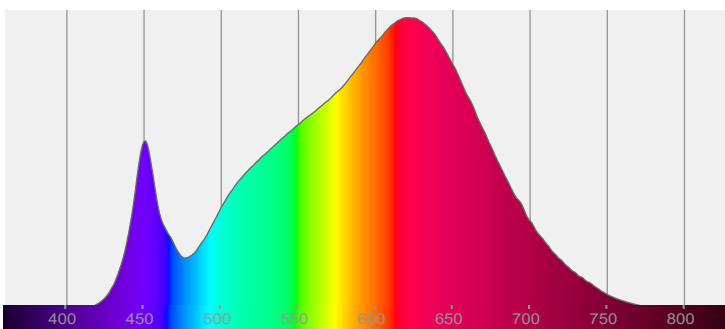
Date and time:

4/28/2022 8:30:22 PM

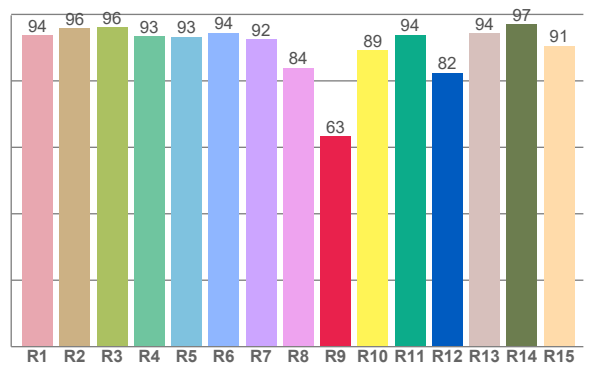
Delivered Lumens

1378

Spectra



CRI: 92.9 (R1-R8)



Color parameters

	Color rendering index	Red component	Color fidelity	Color gamut	Color quality scale	Color coordinate cie 1931	Color coordinate cie 1931	Color coordinate	Color coordinate	Color deviation from black body
	CRI	CRI R9	TM30 R _f	TM30 R _g	CQS	x	y	u	v	Δuv
	92.9	63.2	91.0	101.8	89.9	0.434	0.397	0.251	0.345	-0.0023

R_f 91.0

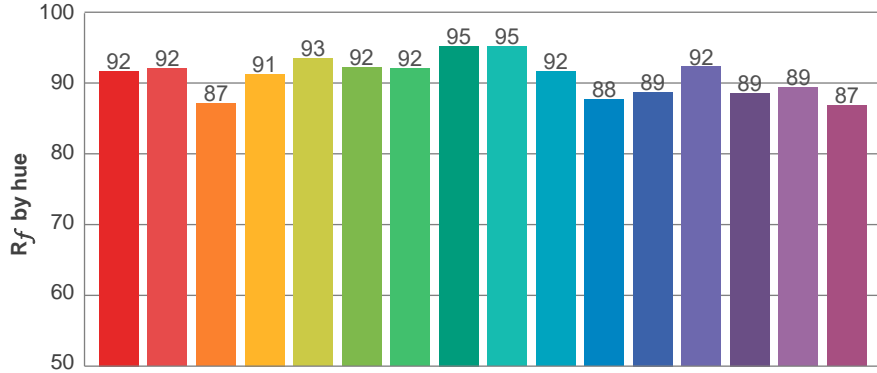
Fidelity index R_f

R_g 101.8

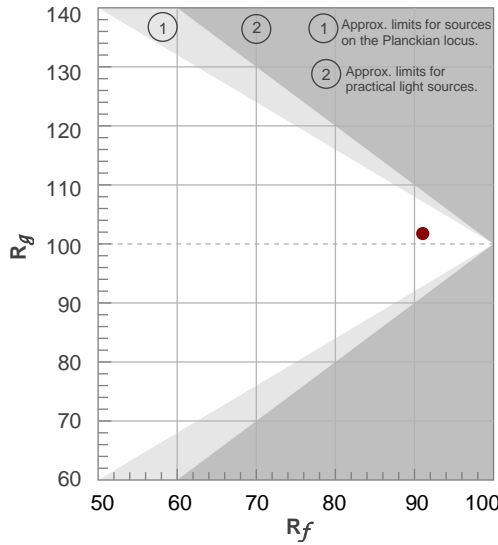
Gammut index R_g

TM30: 91.0

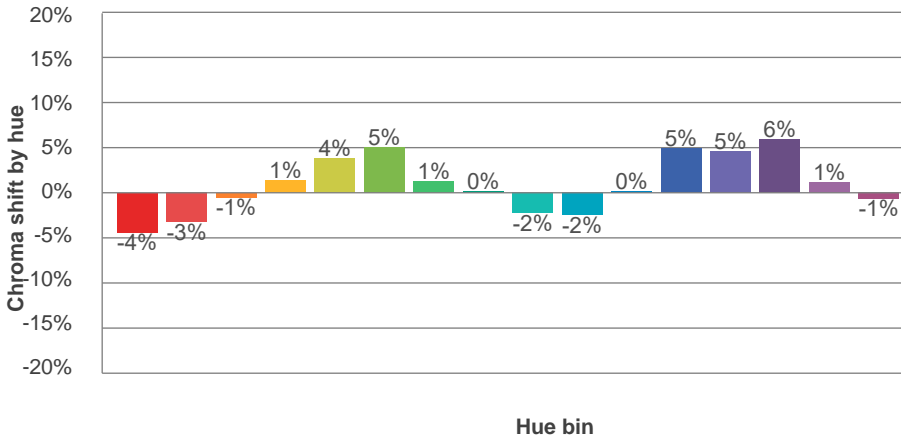
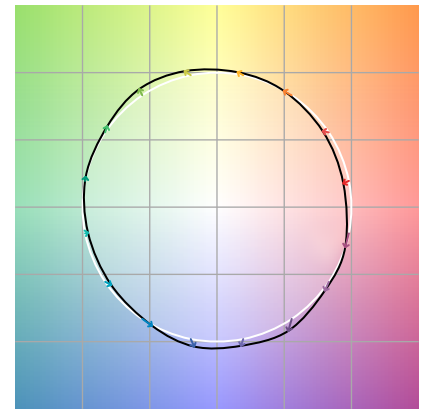
TM-30Color



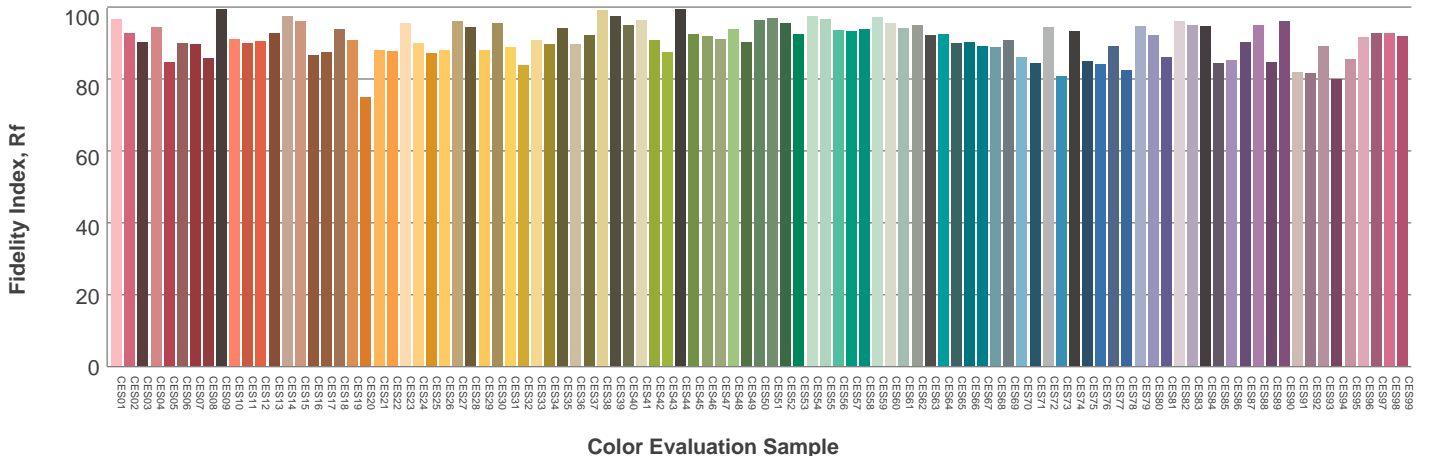
Hue Bin	R _f	Graphic shifts (%)	
		Chroma	Hue
1	92	-4%	-1%
2	92	-3%	3%
3	87	-1%	7%
4	91	1%	5%
5	93	4%	4%
6	92	5%	-1%
7	92	1%	-5%
8	95	0%	-3%
9	95	-2%	0%
10	92	-2%	4%
11	88	0%	9%
12	89	5%	4%
13	92	5%	-3%
14	89	6%	-7%
15	89	1%	-7%
16	87	-1%	-11%



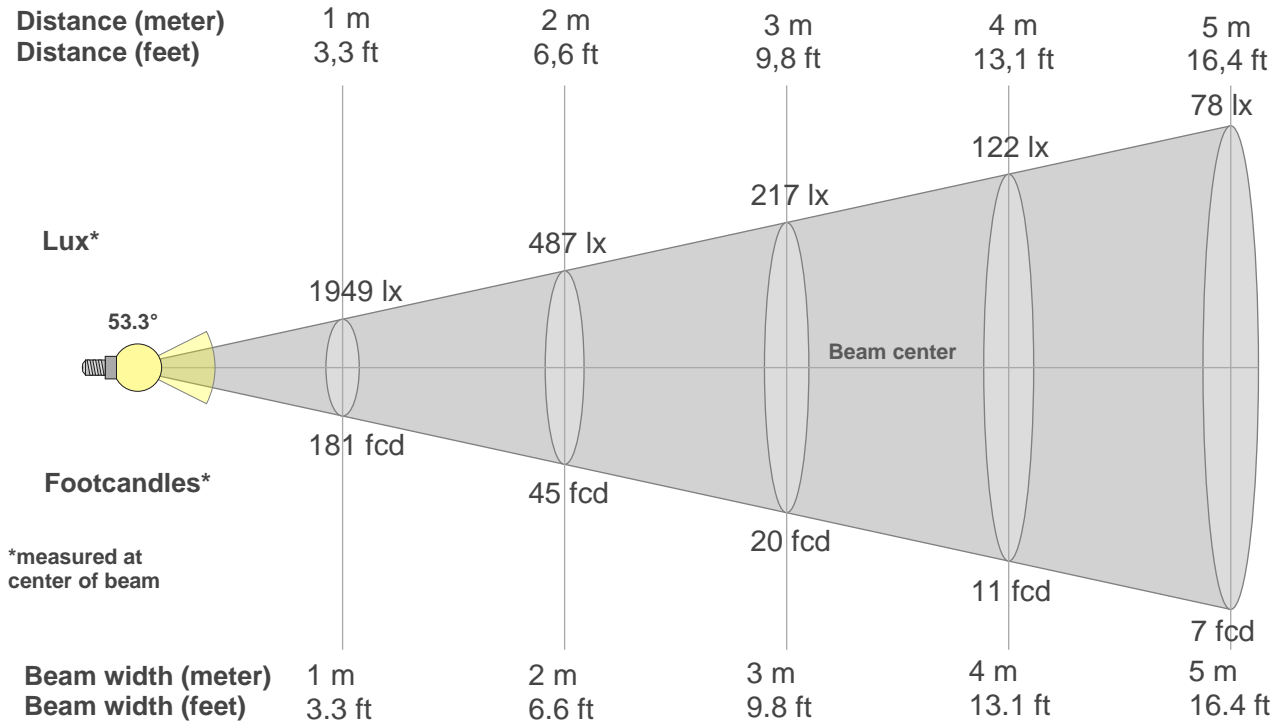
Color vector graphics



Color distortion



Beam details



Beam intensities from 1-20m

1m	2m	3m	4m	5m	6m	7m	8m	9m	10m	11m	12m	13m	14m	15m	16m	17m	18m	19m	20m
3.3ft	6.6ft	9.8ft	13.1ft	16.4ft	19.7ft	23ft	26.2ft	29.5ft	32.8ft	36.1ft	39.4ft	42.7ft	45.9ft	49.2ft	52.5ft	55.8ft	59.1ft	62.3ft	65.6ft
1949lx	487lx	217lx	122lx	78lx	54lx	40lx	30lx	24lx	19lx	16lx	14lx	12lx	10lx	9lx	8lx	7lx	6lx	5lx	5lx
181fcd	45.3fcd	20.1fcd	11.3fcd	7.2fcd	5fcd	3.7fcd	2.8fcd	2.2fcd	1.8fcd	1.5fcd	1.3fcd	1.1fcd	0.9fcd	0.8fcd	0.7fcd	0.6fcd	0.6fcd	0.5fcd	0.5fcd

Intensities in 0° c-plane

0°	2°	4°	6°	8°	10°	12°	14°	16°	18°	20°	22°	24°	26°	28°	30°	32°	34°	36°	38°
1949	1953	1948	1937	1919	1895	1859	1813	1747	1652	1531	1395	1250	1035	807	576	358	223	146	95
100%	100%	100%	99%	98%	97%	95%	93%	90%	85%	79%	72%	64%	53%	41%	30%	18%	11%	8%	5%

Intensities in 90° c-plane

0°	2°	4°	6°	8°	10°	12°	14°	16°	18°	20°	22°	24°	26°	28°	30°	32°	34°	36°	38°
1949	1945	1942	1935	1923	1902	1870	1823	1751	1636	1514	1391	1255	1068	811	560	370	252	170	111
100%	100%	100%	99%	99%	98%	96%	94%	90%	84%	78%	71%	64%	55%	42%	29%	19%	13%	9%	6%

Intensities in 180° c-plane

0°	2°	4°	6°	8°	10°	12°	14°	16°	18°	20°	22°	24°	26°	28°	30°	32°	34°	36°	38°
1949	1942	1929	1911	1888	1863	1829	1785	1719	1624	1505	1391	1240	1038	812	610	427	332	255	187
100%	100%	99%	98%	97%	96%	94%	92%	88%	83%	77%	71%	64%	53%	42%	31%	22%	17%	13%	10%

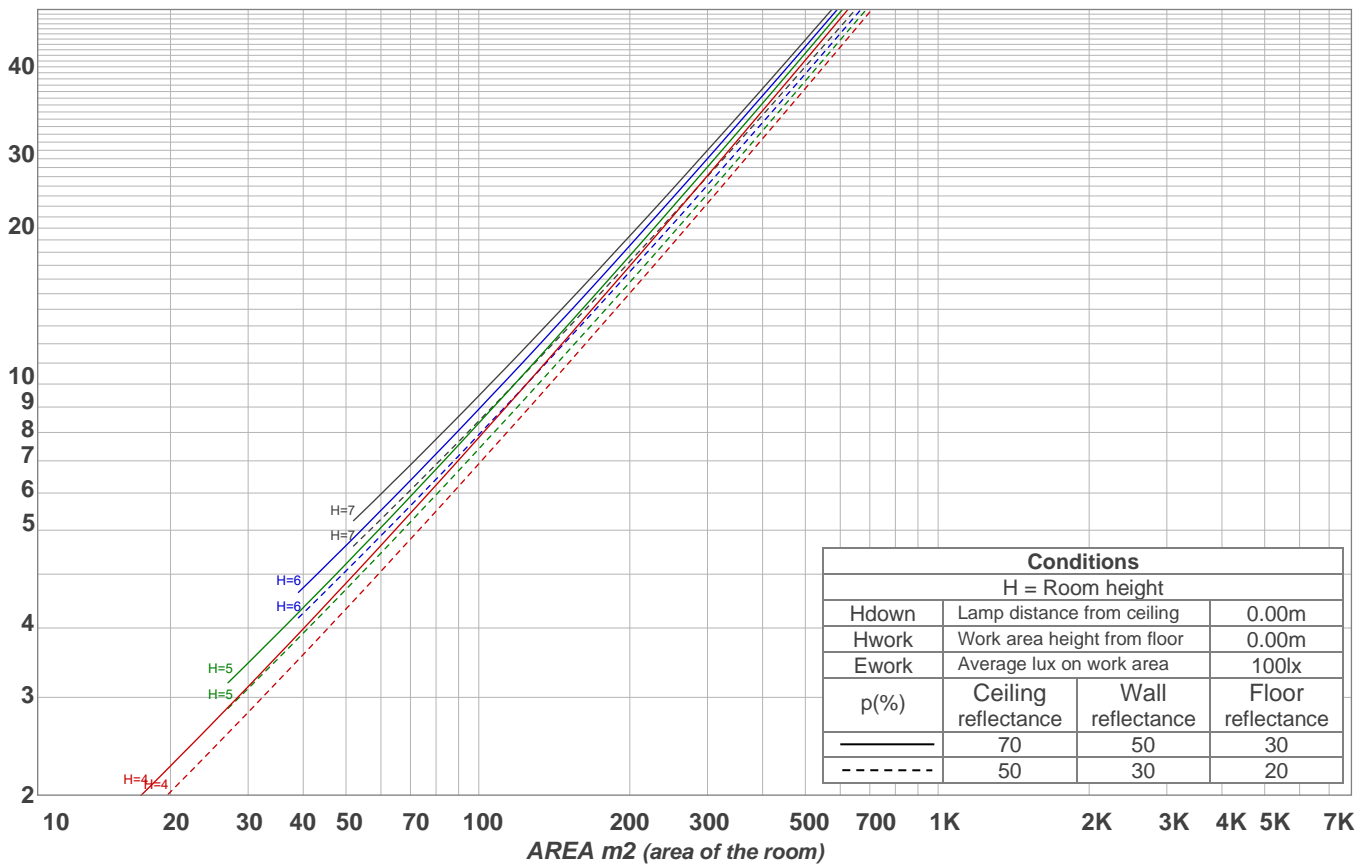
Intensities in 270° c-plane

0°	2°	4°	6°	8°	10°	12°	14°	16°	18°	20°	22°	24°	26°	28°	30°	32°	34°	36°	38°
1949	1948	1941	1927	1903	1871	1831	1782	1723	1650	1531	1403	1257	1071	814	572	413	314	245	180
100%	100%	100%	99%	98%	96%	94%	91%	88%	85%	79%	72%	65%	55%	42%	29%	21%	16%	13%	9%

Beam angle 50%	Field angle 10%	Cutoff angle 2,5%	Intensity ratio in 120° cone	Intensity ratio in 90° cone
53.3°	72.6°	86.1°	99.4%	98.6%

LAMPS (number of lamps)
50

Light planning Luminaire budgetary diagram



Luminaire budgetary diagram AREA m2 (area of the room) Coefficients of Utilization

Ceiling reflectance	80				70				50			30			10			0			
Wall reflectance	70	50	30	10	70	50	30	10	50	30	10	50	30	10	50	30	10	50	30	10	0
Floor reflectance	20	20	20	20	20	20	20	20	20	20	20	20	20	20	20	20	20	20	20	20	0
RCR	(RCR: Room Cavity Ratio)																				
	Room Values are expressed as percentage of Lumens delivered to the task surface																				
0	119	119	119	119	116	116	116	116	111	111	111	106	106	106	102	102	102	100	100	100	
1	114	111	109	107	111	109	107	105	105	103	102	101	100	99	98	97	96	94	94	94	
2	109	104	101	98	107	103	99	97	100	97	94	97	94	92	94	92	91	89	89	89	
3	104	98	94	90	102	97	93	89	94	91	88	92	89	87	90	87	85	84	84	84	
4	100	93	88	84	98	92	87	83	89	86	82	88	84	81	86	83	81	79	79	79	
5	95	88	82	78	94	87	82	78	85	81	77	83	80	77	82	79	76	75	75	75	
6	91	83	78	74	90	82	77	73	81	76	73	79	75	72	78	75	72	71	71	71	
7	87	79	73	69	86	78	73	69	77	72	69	76	72	69	75	71	68	67	67	67	
8	83	75	69	66	82	74	69	66	73	69	65	72	68	65	71	68	65	64	64	64	
9	80	71	66	62	79	71	66	62	70	65	62	69	65	62	68	64	62	60	60	60	
10	77	68	63	59	76	67	62	59	67	62	59	66	62	59	65	61	59	57	57	57	

Zonal Lumen Summary

0°-10°	10°-20°	20°-30°	30°-40°	40°-50°	50°-60°	60°-70°	70°-80°	80°-90°
183 lm	490 lm	502 lm	161 lm	29.4 lm	3.73 lm	2.85 lm	2.54 lm	2.94 lm
90°-100°	100°-110°	110°-120°	120°-130°	130°-140°	140°-150°	150°-160°	160°-170°	170°-180°
0.000 lm	0.000 lm	0.000 lm	0.000 lm	0.000 lm	0.000 lm	0.000 lm	0.000 lm	0.000 lm