

Light efficiency:



Output: 1243 lm

Light quality:

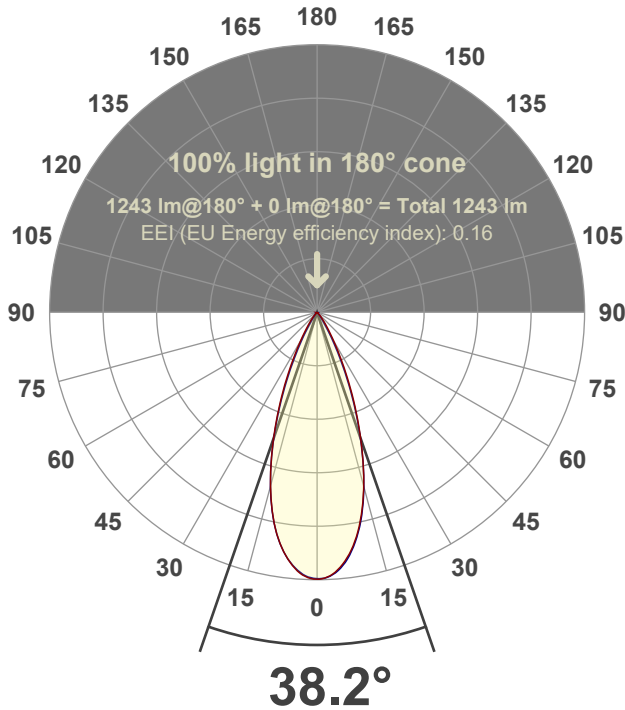


Peak: 2819 cd

Power: 14.2 W



Beam angle



Test number:

GR-F-CZ14-30k-FL-SQ-91A-Rev2

Luminaire Model:

Graffiti Regress Square Fixed Downlight-CZ14 30k 38° Optic-Solite

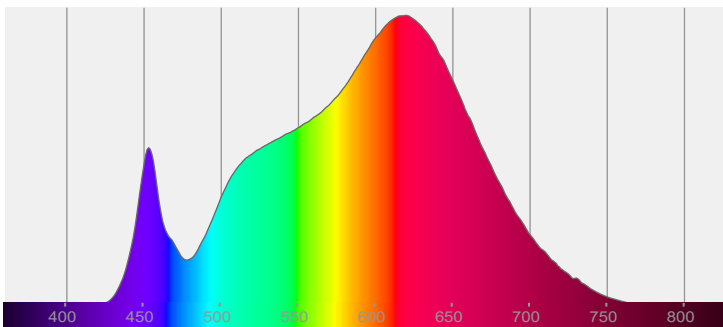
Date and time:

6/30/2022 8:26:58 PM

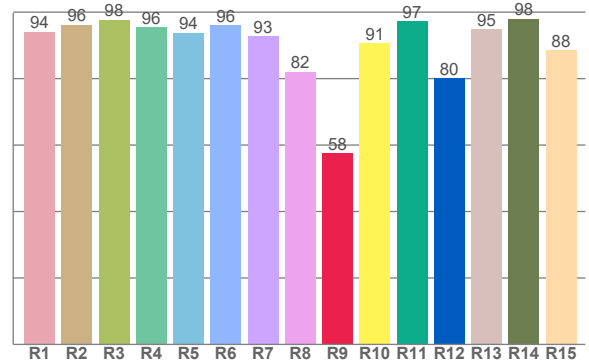
Delivered Lumens

1243

Spectra



CRI: 93.5 (R1-R8)



Color parameters

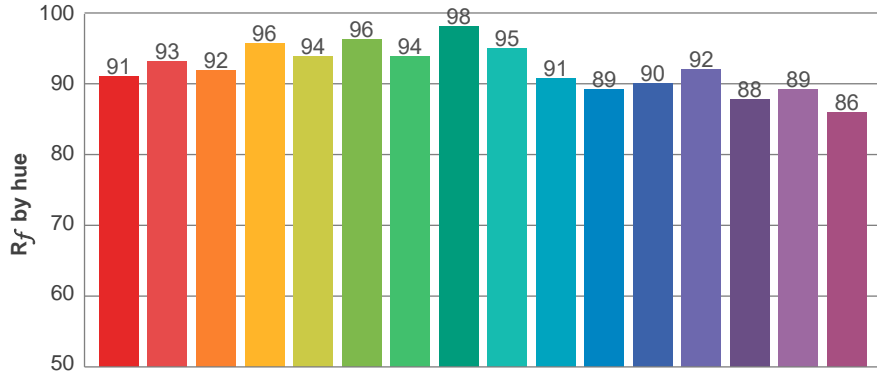
Color rendering index	Red component	Color fidelity	Color gamut	Color quality scale	Color coordinate cie 1931	Color coordinate cie 1931	Color coordinate	Color coordinate	Color divition from black body
CRI	CRI R9	TM30 R _f	TM30 R _g	CQS	x	y	u	v	Δuv
93.5	57.6	92.3	99.2	91.8	0.437	0.408	0.249	0.349	0.0013

R_f 92.3
Fidelity index R_f

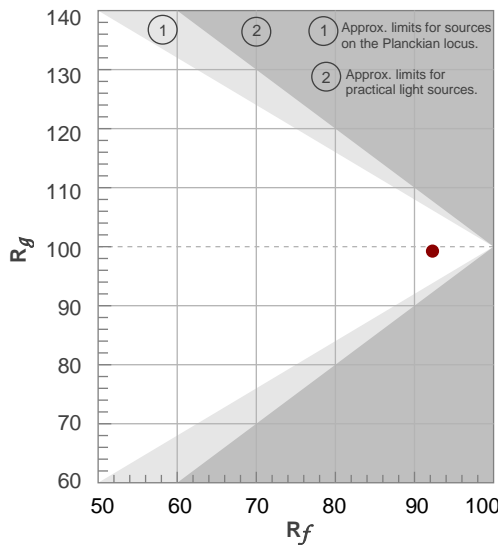
R_g 99.2
Gammut index R_g

TM30: 92.3

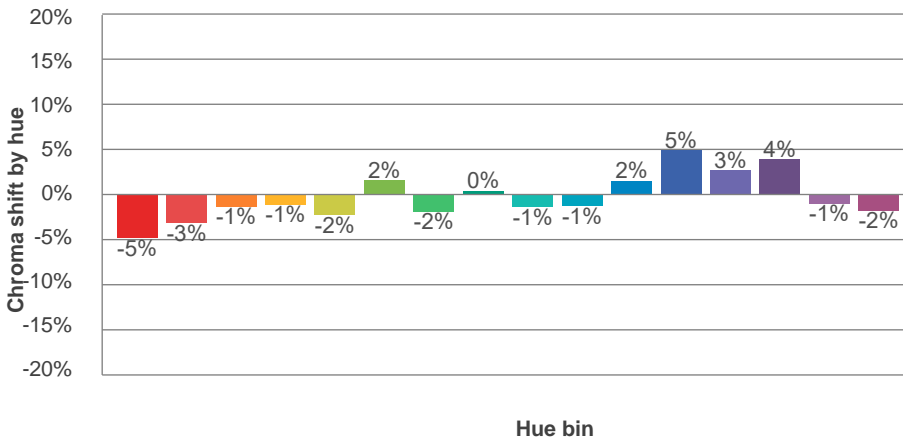
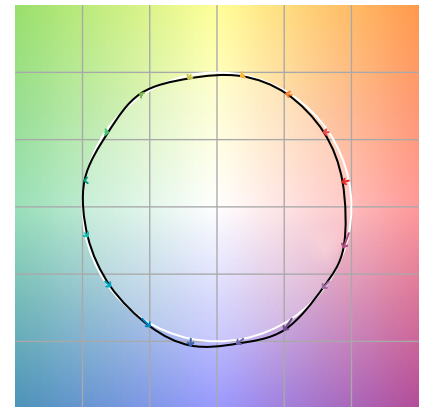
TM-30Color



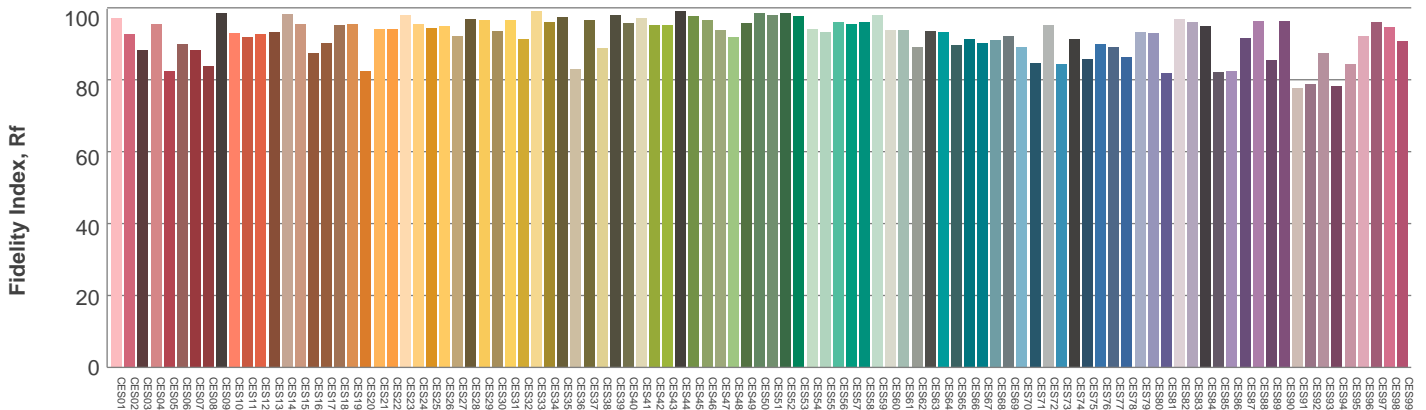
Hue Bin	R_f	Graphic shifts (%)	
		Chroma	Hue
1	91	-5%	0%
2	93	-3%	2%
3	92	-1%	4%
4	96	-1%	1%
5	94	-2%	2%
6	96	2%	1%
7	94	-2%	-1%
8	98	0%	0%
9	95	-1%	3%
10	91	-1%	5%
11	89	2%	8%
12	90	5%	1%
13	92	3%	-5%
14	88	4%	-9%
15	89	-1%	-6%
16	86	-2%	-11%



Color vector graphics

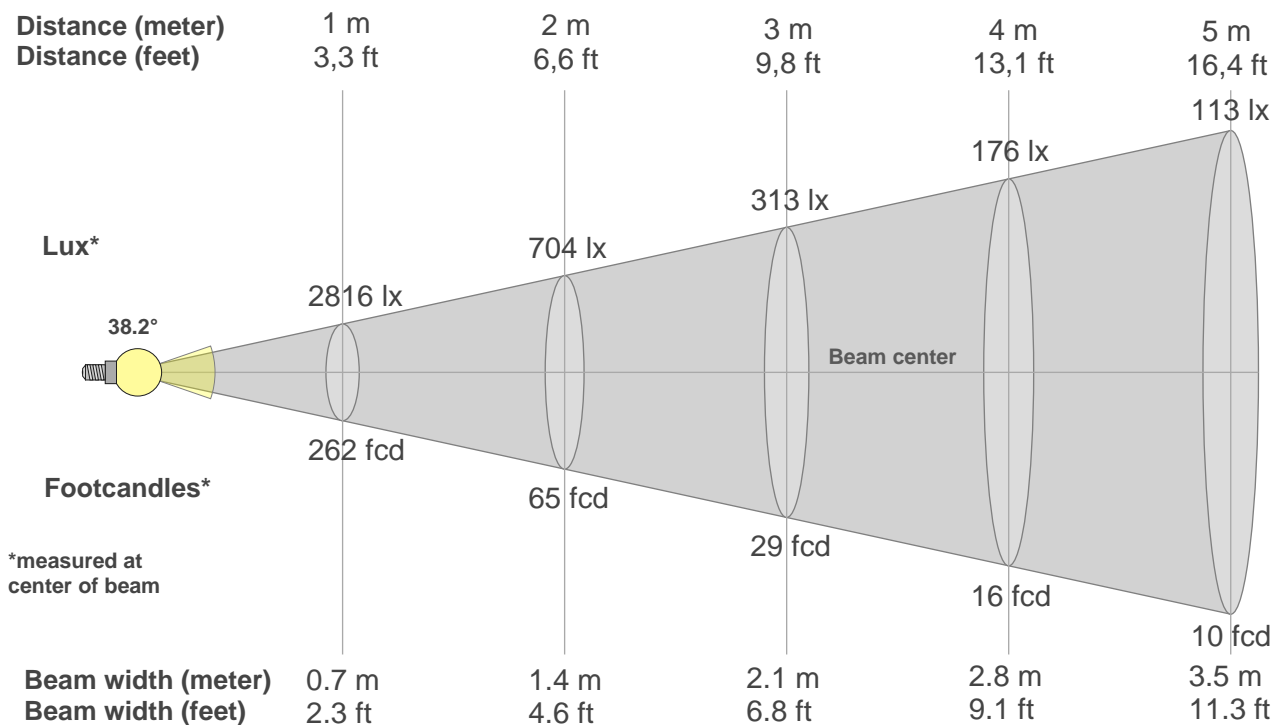


Color distortion



Color Evaluation Sample

Beam details



Beam intensities from 1-20m

1m	2m	3m	4m	5m	6m	7m	8m	9m	10m	11m	12m	13m	14m	15m	16m	17m	18m	19m	20m
3.3ft	6.6ft	9.8ft	13.1ft	16.4ft	19.7ft	23ft	26.2ft	29.5ft	32.8ft	36.1ft	39.4ft	42.7ft	45.9ft	49.2ft	52.5ft	55.8ft	59.1ft	62.3ft	65.6ft
2816lx	704lx	313lx	176lx	113lx	78lx	57lx	44lx	35lx	28lx	23lx	20lx	17lx	14lx	13lx	11lx	10lx	9lx	8lx	7lx
261.7fc	65.4fcd	29.1fcd	16.4fcd	10.5fcd	7.3fcd	5.3fcd	4.1fcd	3.2fcd	2.6fcd	2.2fcd	1.8fcd	1.5fcd	1.3fcd	1.2fcd	1fcd	0.9fcd	0.8fcd	0.7fcd	0.7fcd

Intensities in 0° c-plane

0°	2°	4°	6°	8°	10°	12°	14°	16°	18°	20°	22°	24°	26°	28°	30°	32°	34°	36°	38°
2816	2800	2750	2666	2551	2402	2221	2016	1790	1548	1304	1074	858	665	500	366	268	200	149	110
100%	99%	98%	95%	91%	85%	79%	72%	64%	55%	46%	38%	30%	24%	18%	13%	10%	7%	5%	4%

Intensities in 90° c-plane

0°	2°	4°	6°	8°	10°	12°	14°	16°	18°	20°	22°	24°	26°	28°	30°	32°	34°	36°	38°
2816	2805	2758	2677	2562	2415	2239	2028	1790	1539	1287	1043	809	599	428	296	200	134	91	63
100%	100%	98%	95%	91%	86%	80%	72%	64%	55%	46%	37%	29%	21%	15%	11%	7%	5%	3%	2%

Intensities in 180° c-plane

0°	2°	4°	6°	8°	10°	12°	14°	16°	18°	20°	22°	24°	26°	28°	30°	32°	34°	36°	38°
2816	2802	2755	2668	2550	2404	2225	2018	1790	1547	1304	1072	855	661	495	366	272	201	149	112
100%	100%	98%	95%	91%	85%	79%	72%	64%	55%	46%	38%	30%	23%	18%	13%	10%	7%	5%	4%

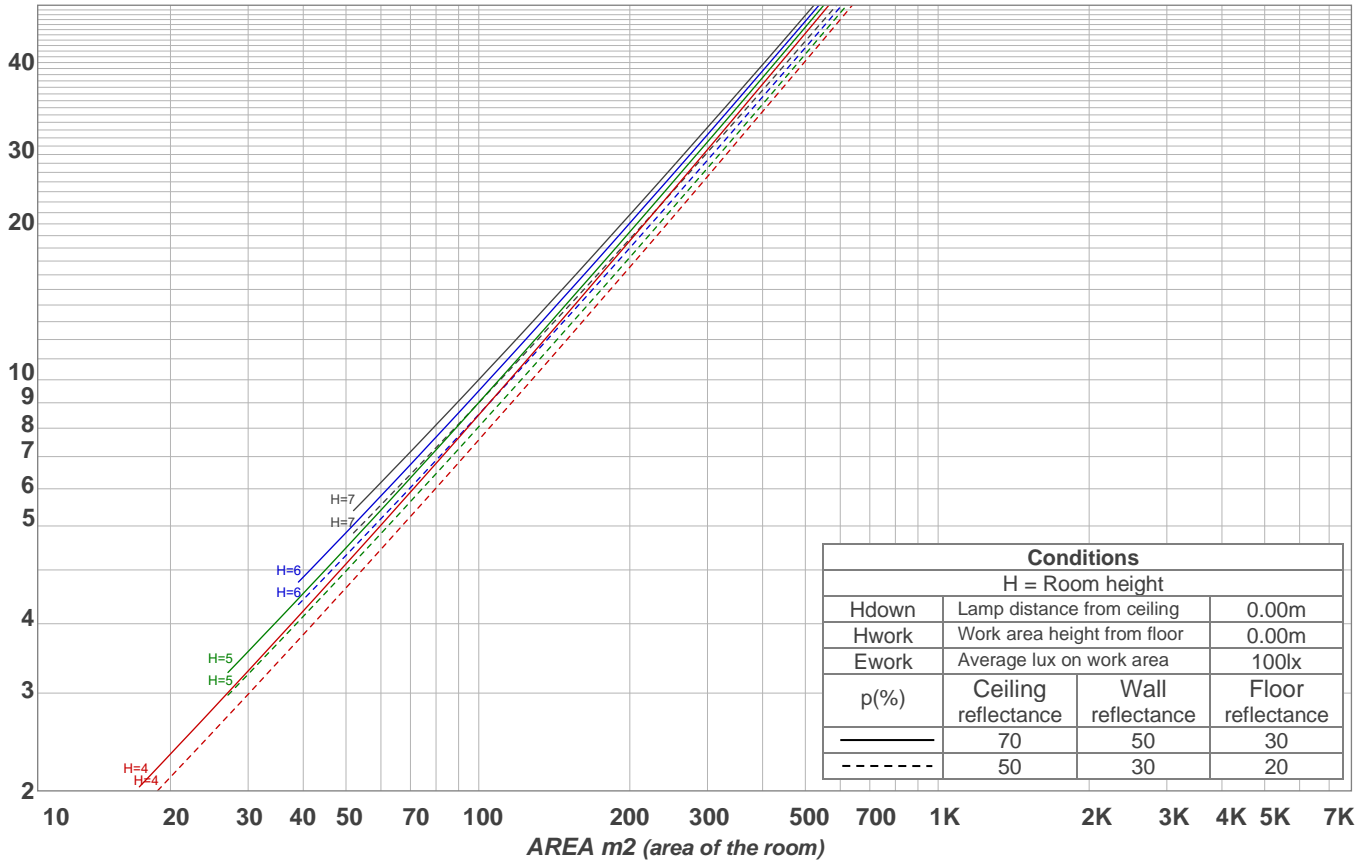
Intensities in 270° c-plane

0°	2°	4°	6°	8°	10°	12°	14°	16°	18°	20°	22°	24°	26°	28°	30°	32°	34°	36°	38°
2816	2795	2742	2660	2549	2406	2231	2020	1787	1539	1285	1036	800	591	420	288	194	129	89	63
100%	99%	97%	94%	90%	85%	79%	72%	63%	55%	46%	37%	28%	21%	15%	10%	7%	5%	3%	2%

Beam angle 50%	Field angle 10%	Cutoff angle 2,5%	Intensity ratio in 120° cone	Intensity ratio in 90° cone
38.2°	61.9°	78.6°	99.0%	97.7%

LAMPS (number of lamps)
50

Light planning Luminaire budgetary diagram



Luminaire budgetary diagram AREA m2 (area of the room) Coefficients of Utilization

Ceiling reflectance	80				70				50			30			10			0			
Wall reflectance	70	50	30	10	70	50	30	10	50	30	10	50	30	10	50	30	10	50	30	10	0
Floor reflectance	20	20	20	20	20	20	20	20	20	20	20	20	20	20	20	20	20	20	20	20	0
RCR	(RCR: Room Cavity Ratio) Room Values are expressed as percentage of Lumens delivered to the task surface																				
0	119	119	119	119	116	116	116	116	111	111	111	106	106	106	102	102	102	100	100	100	
1	114	112	110	108	112	110	108	106	106	104	103	102	101	100	98	98	97	95	95	95	
2	110	105	102	99	107	104	100	98	100	98	96	98	95	94	95	93	92	90	90	90	
3	105	100	95	92	103	98	94	91	96	93	90	93	91	88	91	89	87	86	86	86	
4	101	95	90	86	99	94	89	86	91	88	85	90	86	84	88	85	83	82	82	82	
5	97	90	85	82	96	89	85	81	88	84	81	86	83	80	84	82	79	78	78	78	
6	93	86	81	77	92	85	81	77	84	80	77	83	79	76	81	78	76	74	74	74	
7	90	82	77	74	89	82	77	73	80	76	73	79	76	73	78	75	72	71	71	71	
8	87	79	74	70	86	78	73	70	77	73	70	76	72	70	75	72	69	68	68	68	
9	84	76	71	67	83	75	70	67	74	70	67	73	70	67	73	69	67	65	65	65	
10	81	73	68	65	80	72	68	64	71	67	64	71	67	64	70	67	64	63	63	63	

Zonal Lumen Summary

0°-10°	10°-20°	20°-30°	30°-40°	40°-50°	50°-60°	60°-70°	70°-80°	80°-90°
249 lm	518 lm	335 lm	95.7 lm	24.9 lm	8.20 lm	5.22 lm	3.42 lm	3.50 lm
90°-100°	100°-110°	110°-120°	120°-130°	130°-140°	140°-150°	150°-160°	160°-170°	170°-180°
0.000 lm	0.000 lm	0.000 lm	0.000 lm	0.000 lm	0.000 lm	0.000 lm	0.000 lm	0.000 lm

www.graffitilighting.com As a result of our continuous improvement, values are subject to change without notice. These are delivered results and can vary +/- 10% from published source data range.