

Light efficiency:



Output: 1264 lm

Light quality:

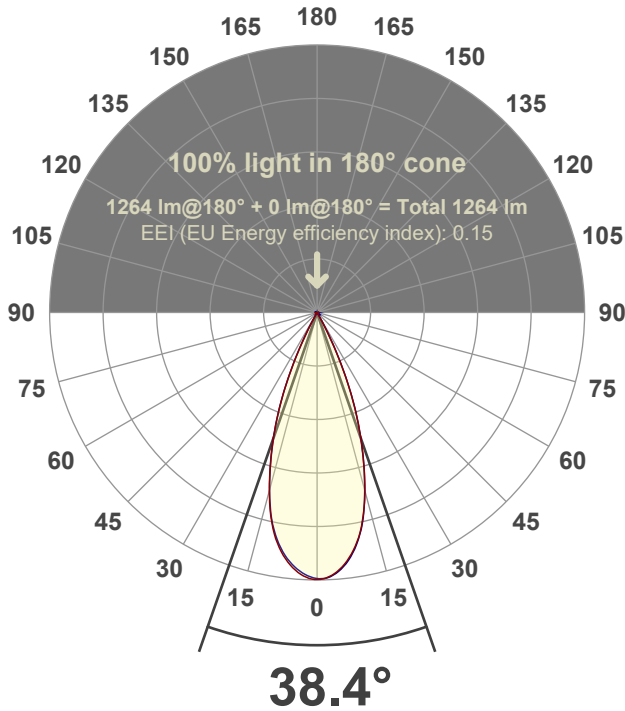


Peak: 3301 cd

Power: 14.2 W



Beam angle



Test number:

GR-F-CZ14-30k-FL-SQ-Rev2

Luminaire Model:

Graffiti Regress Square Fixed Downlight-CZ14 30k 38° Optic

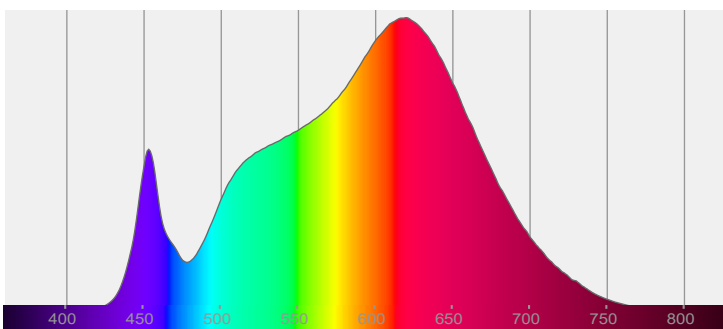
Date and time:

6/30/2022 8:24:48 PM

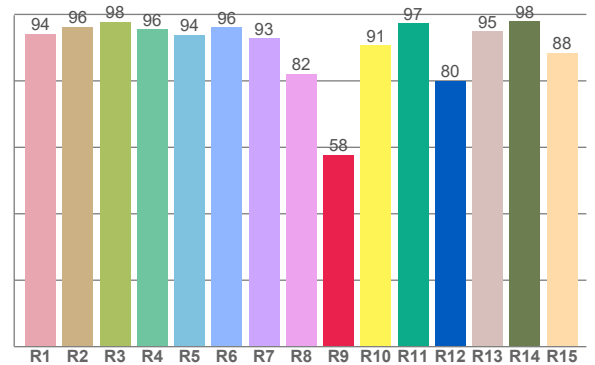
Delivered Lumens

1264

Spectra



CRI: 93.6 (R1-R8)



Color parameters

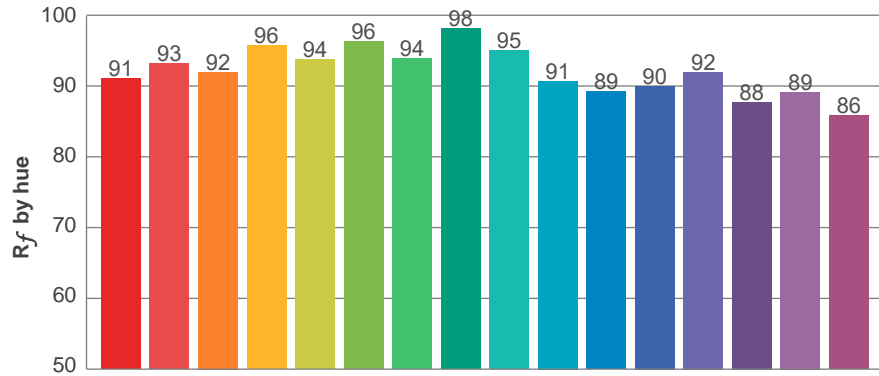
	Color rendering index	Red component	Color fidelity	Color gamut	Color quality scale	Color coordinate cie 1931	Color coordinate cie 1931	Color coordinate	Color coordinate	Color deviation from black body
	CRI	CRI R9	TM30 R _f	TM30 R _g	CQS	x	y	u	v	Δuv
	93.6	57.7	92.3	99.2	91.9	0.437	0.408	0.249	0.349	0.0014

R_f 92.3
Fidelity index R_f

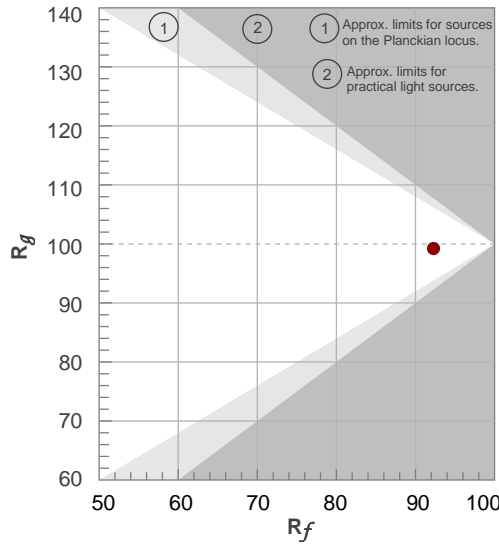
R_g 99.2
Gammut index R_g

TM30: 92.3

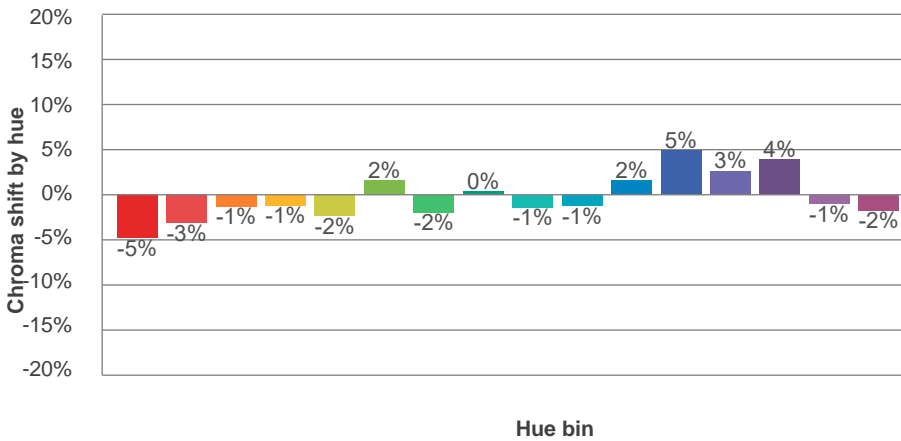
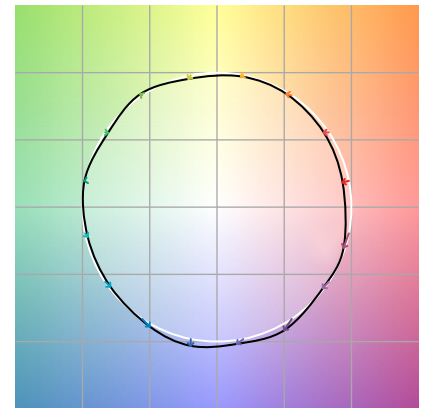
TM-30Color



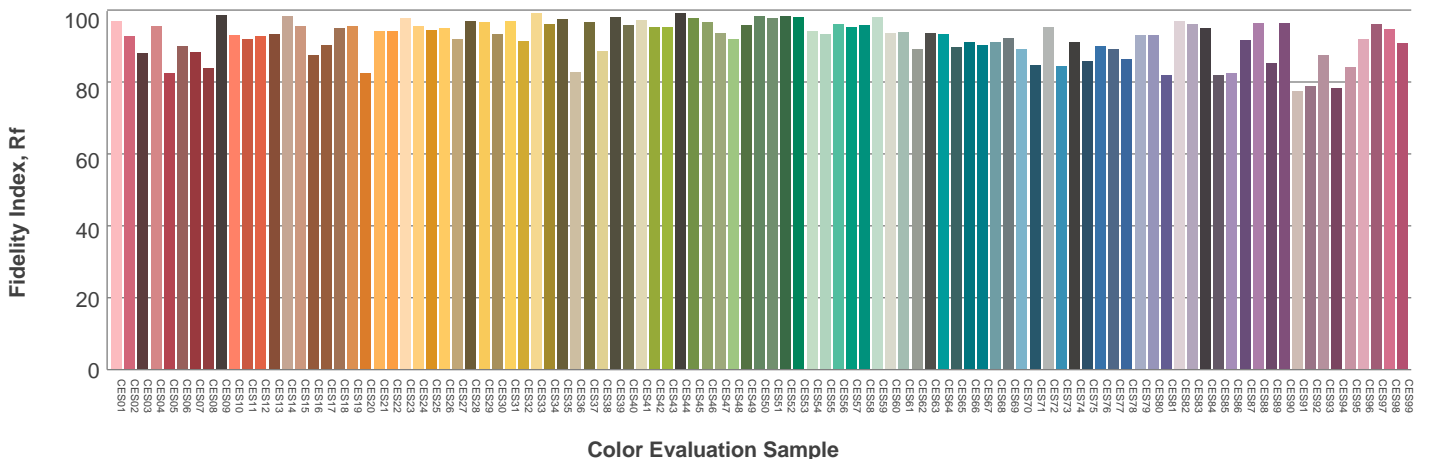
Hue Bin	R_f	Graphic shifts (%)	
		Chroma	Hue
1	91	-5%	0%
2	93	-3%	2%
3	92	-1%	4%
4	96	-1%	1%
5	94	-2%	2%
6	96	2%	1%
7	94	-2%	-1%
8	98	0%	0%
9	95	-1%	3%
10	91	-1%	5%
11	89	2%	8%
12	90	5%	1%
13	92	3%	-5%
14	88	4%	-9%
15	89	-1%	-6%
16	86	-2%	-11%



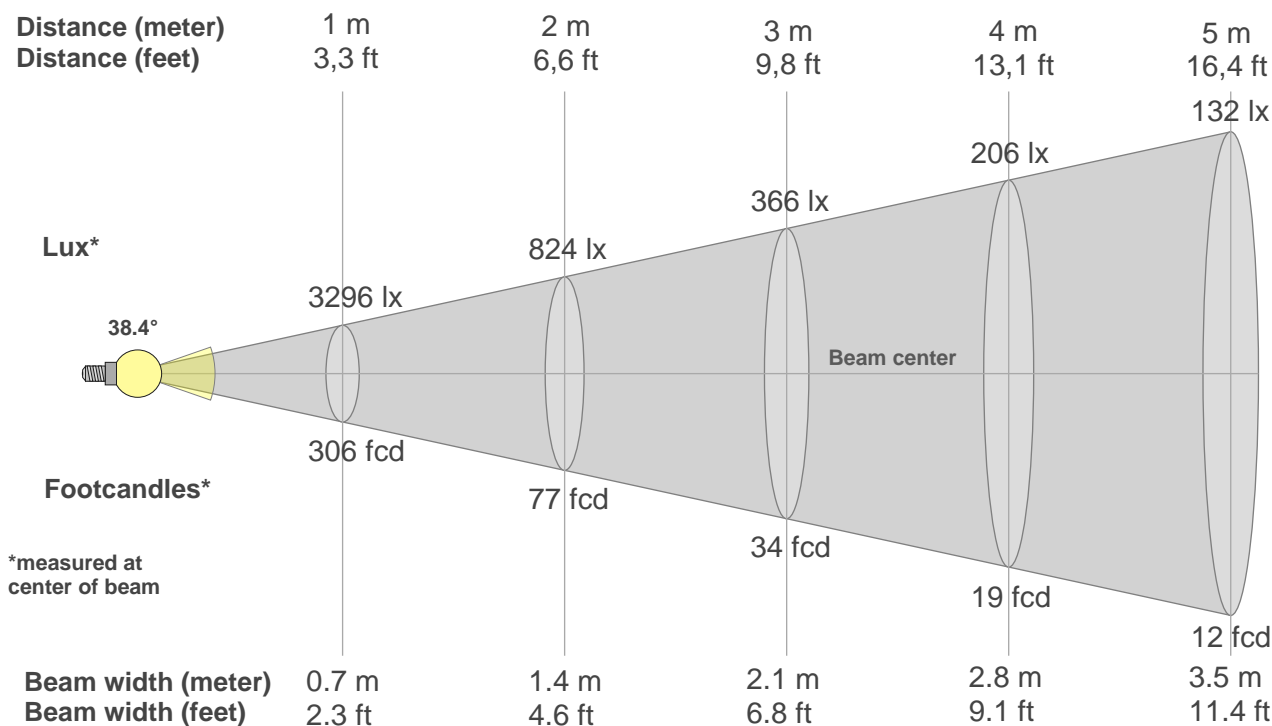
Color vector graphics



Color distortion



Beam details



Beam intensities from 1-20m

1m	2m	3m	4m	5m	6m	7m	8m	9m	10m	11m	12m	13m	14m	15m	16m	17m	18m	19m	20m
3.3ft	6.6ft	9.8ft	13.1ft	16.4ft	19.7ft	23ft	26.2ft	29.5ft	32.8ft	36.1ft	39.4ft	42.7ft	45.9ft	49.2ft	52.5ft	55.8ft	59.1ft	62.3ft	65.6ft
3296lx	824lx	366lx	206lx	132lx	92lx	67lx	51lx	41lx	33lx	27lx	23lx	20lx	17lx	15lx	13lx	11lx	10lx	9lx	8lx
306.2fcd	76.5fcd	34fcd	19.1fcd	12.2fcd	8.5fcd	6.2fcd	4.8fcd	3.8fcd	3.1fcd	2.5fcd	2.1fcd	1.8fcd	1.6fcd	1.4fcd	1.2fcd	1.1fcd	0.9fcd	0.8fcd	0.8fcd

Intensities in 0° c-plane

0°	2°	4°	6°	8°	10°	12°	14°	16°	18°	20°	22°	24°	26°	28°	30°	32°	34°	36°	38°
3296	3282	3231	3144	3021	2866	2668	2423	2139	1839	1531	1213	885	556	285	118	41	19	12	9
100%	100%	98%	95%	92%	87%	81%	74%	65%	56%	46%	37%	27%	17%	9%	4%	1%	1%	0%	0%

Intensities in 90° c-plane

0°	2°	4°	6°	8°	10°	12°	14°	16°	18°	20°	22°	24°	26°	28°	30°	32°	34°	36°	38°
3296	3287	3237	3154	3036	2881	2683	2424	2136	1832	1522	1215	883	573	310	123	34	18	12	9
100%	100%	98%	96%	92%	87%	81%	74%	65%	56%	46%	37%	27%	17%	9%	4%	1%	1%	0%	0%

Intensities in 180° c-plane

0°	2°	4°	6°	8°	10°	12°	14°	16°	18°	20°	22°	24°	26°	28°	30°	32°	34°	36°	38°
3296	3282	3231	3147	3027	2872	2674	2429	2141	1840	1531	1209	879	551	278	113	39	18	12	10
100%	100%	98%	95%	92%	87%	81%	74%	65%	56%	46%	37%	27%	17%	8%	3%	1%	1%	0%	0%

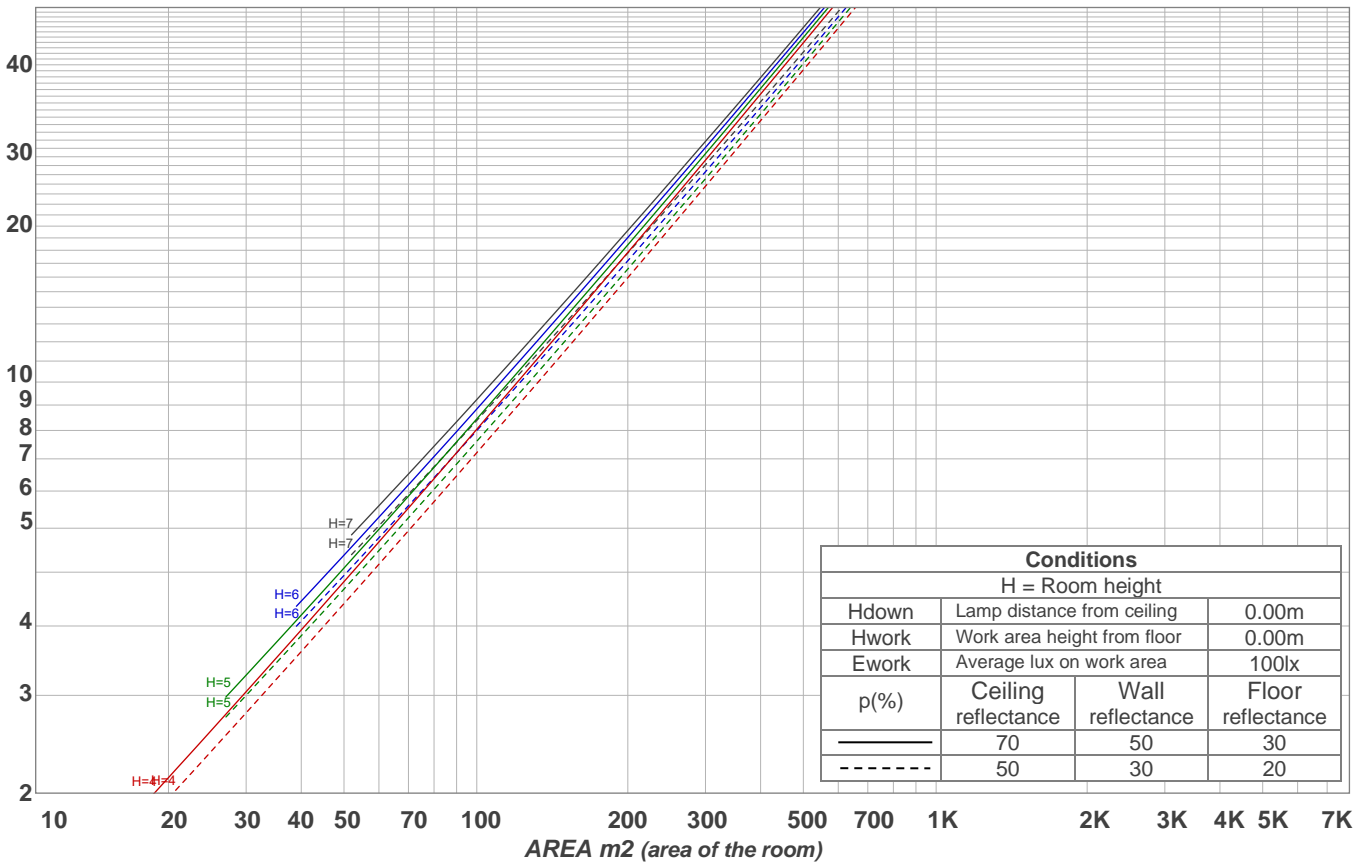
Intensities in 270° c-plane

0°	2°	4°	6°	8°	10°	12°	14°	16°	18°	20°	22°	24°	26°	28°	30°	32°	34°	36°	38°
3296	3258	3198	3112	3000	2854	2660	2413	2130	1829	1523	1204	867	549	281	93	35	18	12	9
100%	99%	97%	94%	91%	87%	81%	73%	65%	55%	46%	37%	26%	17%	9%	3%	1%	1%	0%	0%

Beam angle 50%	Field angle 10%	Cutoff angle 2,5%	Intensity ratio in 120° cone	Intensity ratio in 90° cone
38.4°	55.3°	61.1°	99.3%	99.1%

LAMPS (number of lamps)
50

Light planning Luminaire budgetary diagram



Luminaire budgetary diagram AREA m2 (area of the room) Coefficients of Utilization

Ceiling reflectance	80				70				50			30			10			0			
Wall reflectance	70	50	30	10	70	50	30	10	50	30	10	50	30	10	50	30	10	50	30	10	0
Floor reflectance	20	20	20	20	20	20	20	20	20	20	20	20	20	20	20	20	20	20	20	20	0
RCR	(RCR: Room Cavity Ratio)																				
	Room Values are expressed as percentage of Lumens delivered to the task surface																				
0	119	119	119	119	116	116	116	116	111	111	111	106	106	106	102	102	102	100	100	100	
1	115	112	110	108	112	110	108	107	106	105	103	103	101	100	99	98	97	96	96	96	
2	110	107	103	101	108	105	102	100	102	99	97	99	97	95	96	95	93	92	92	92	
3	107	102	98	95	105	100	97	94	98	95	92	95	93	91	93	91	90	88	88	88	
4	103	97	93	90	101	96	92	89	94	91	88	92	89	87	90	88	86	85	85	85	
5	99	93	89	85	98	92	88	85	91	87	84	89	86	84	88	85	83	82	82	82	
6	96	89	85	82	95	89	84	81	87	84	81	86	83	80	85	82	80	79	79	79	
7	93	86	81	78	92	85	81	78	84	80	78	83	80	77	82	79	77	76	76	76	
8	90	83	78	75	89	82	78	75	81	78	75	81	77	75	80	77	74	73	73	73	
9	87	80	76	73	86	80	75	72	79	75	72	78	74	72	77	74	72	71	71	71	
10	85	77	73	70	84	77	73	70	76	72	70	76	72	70	75	72	69	68	68	68	

Zonal Lumen Summary

0°-10°	10°-20°	20°-30°	30°-40°	40°-50°	50°-60°	60°-70°	70°-80°	80°-90°
294 lm	618 lm	323 lm	14.2 lm	3.53 lm	2.23 lm	2.43 lm	2.61 lm	3.06 lm
90°-100°	100°-110°	110°-120°	120°-130°	130°-140°	140°-150°	150°-160°	160°-170°	170°-180°
0.000 lm	0.000 lm	0.000 lm	0.000 lm	0.000 lm	0.000 lm	0.000 lm	0.000 lm	0.000 lm