

Light efficiency:



Output: 1272 lm

Light quality:

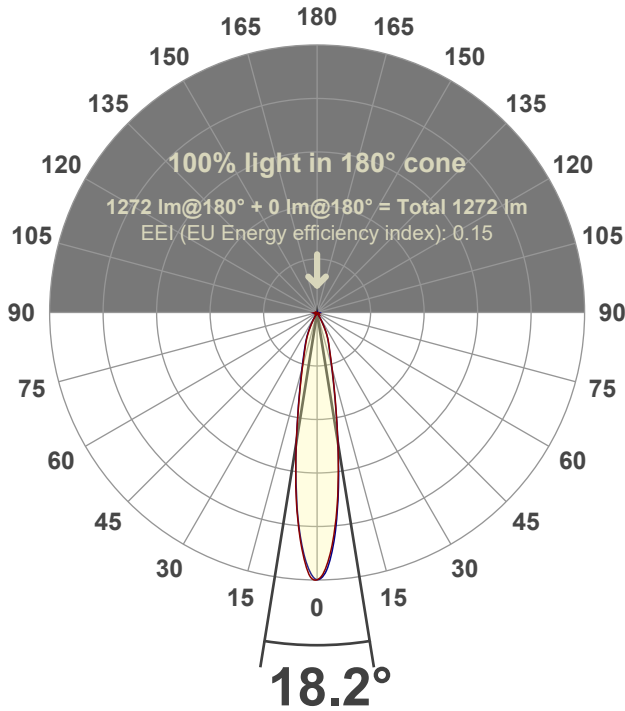


Peak: 7701 cd

Power: 14.2 W



Beam angle



Test number:

GR-F-CZ14-30k-SP-RD-Rev2

Luminaire Model:

Graffiti Regress Round Fixed Downlight-CZ14 30k 15° Optic

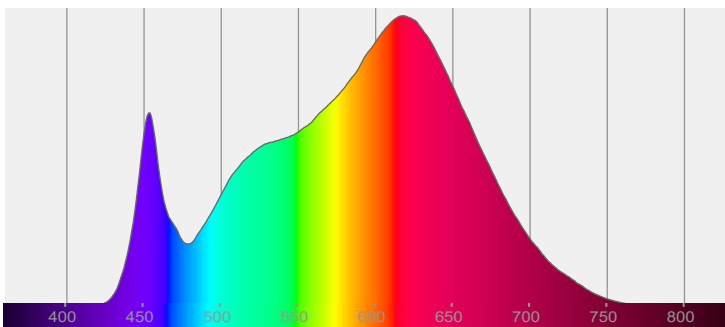
Date and time:

3/9/2022 5:07:13 PM

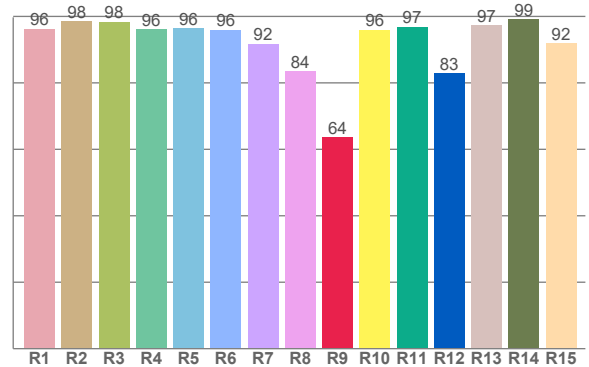
Delivered Lumens

1272

Spectra



CRI: 94.6 (R1-R8)



Color parameters

	Color rendering index	Red component	Color fidelity	Color gamut	Color quality scale	Color coordinate cie 1931	Color coordinate cie 1931	Color coordinate	Color coordinate	Color deviation from black body
	CRI	CRI R9	TM30 R <sub>f</sub>	TM30 R <sub>g</sub>	CQS	x	y	u	v	Δuv
	94.6	63.5	92.2	100.5	91.9	0.425	0.394	0.247	0.344	-0.0025

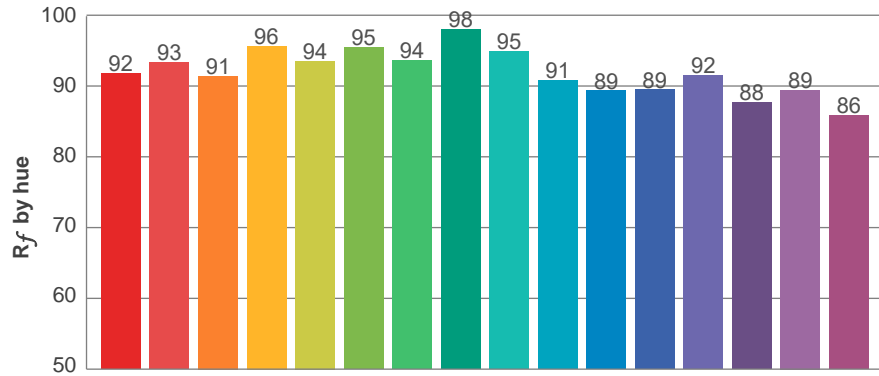
**$R_f$  92.2**  
Fidelity index  $R_f$

---

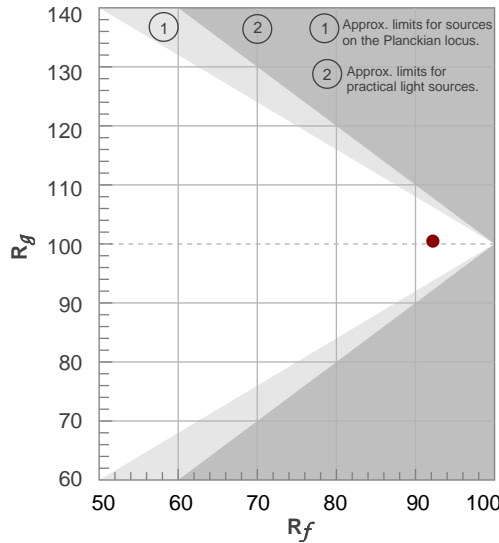
**$R_g$  100.5**  
Gammut index  $R_g$

TM30: 92.2

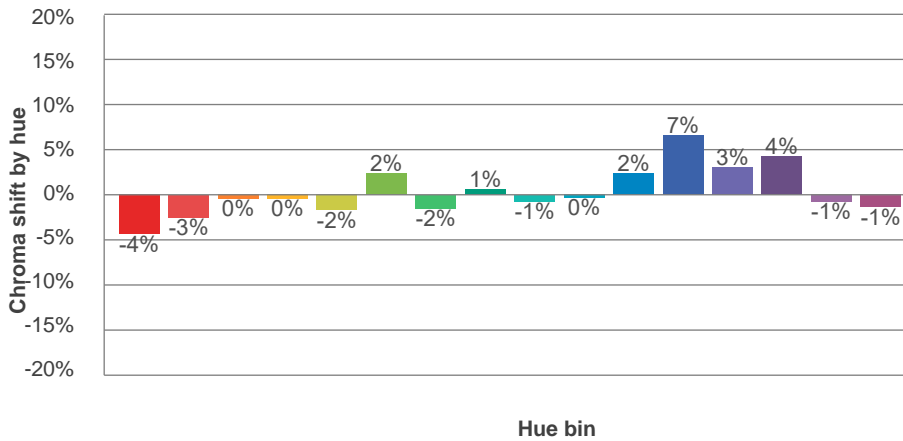
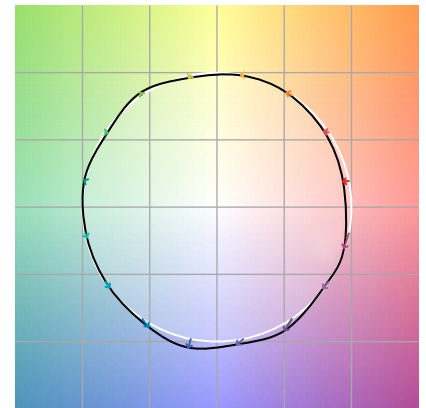
TM-30Color



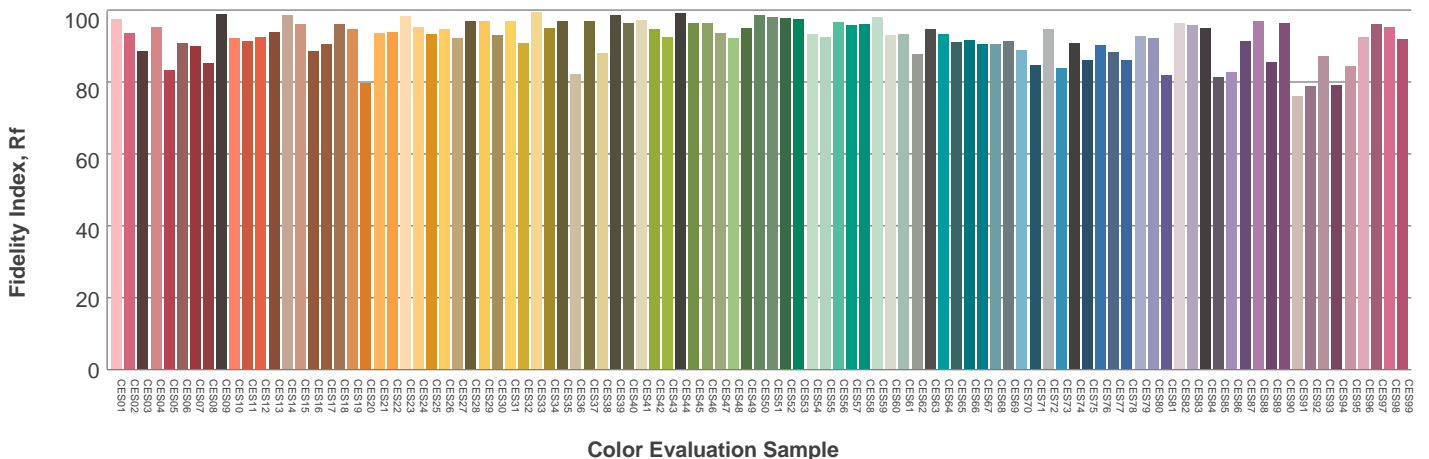
Hue Bin	$R_f$	Graphic shifts (%)	
		Chroma	Hue
1	92	-4%	0%
2	93	-3%	2%
3	91	0%	4%
4	96	0%	1%
5	94	-2%	2%
6	95	2%	0%
7	94	-2%	-1%
8	98	1%	0%
9	95	-1%	3%
10	91	0%	5%
11	89	2%	7%
12	89	7%	-1%
13	92	3%	-5%
14	88	4%	-9%
15	89	-1%	-6%
16	86	-1%	-11%



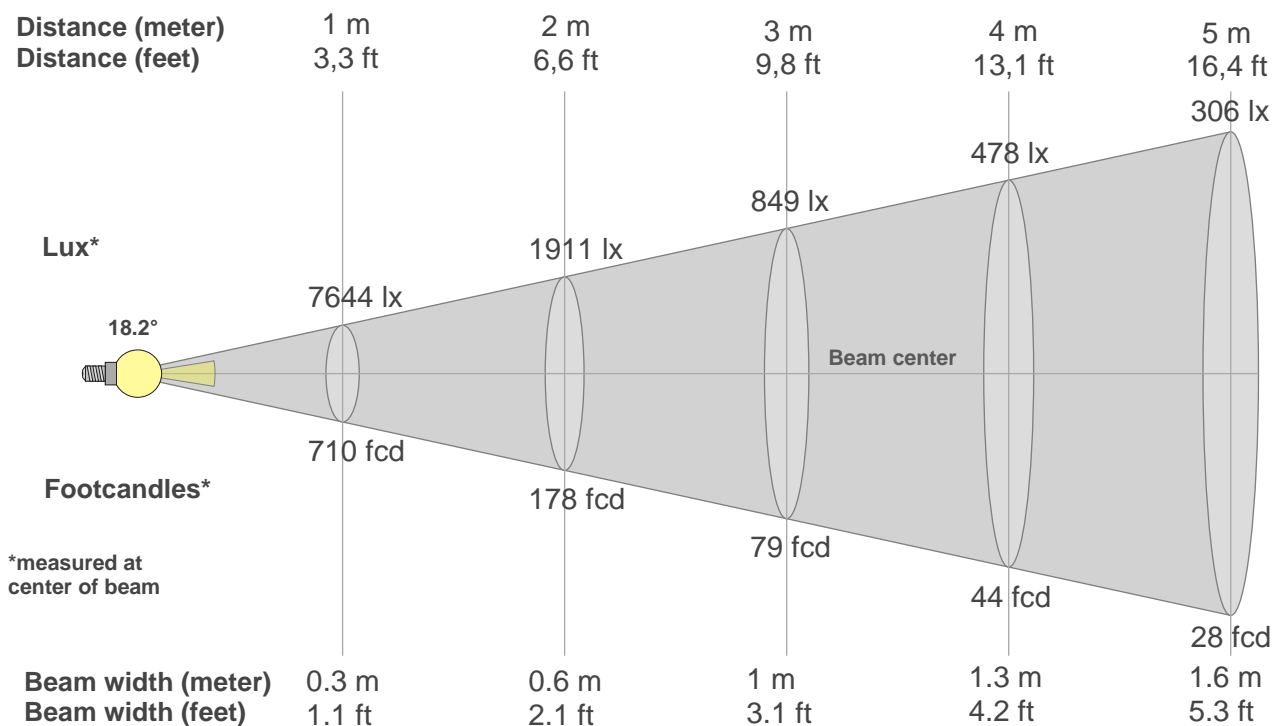
Color vector graphics



Color distortion



### Beam details



#### Beam intensities from 1-20m

1m	2m	3m	4m	5m	6m	7m	8m	9m	10m	11m	12m	13m	14m	15m	16m	17m	18m	19m	20m
3.3ft	6.6ft	9.8ft	13.1ft	16.4ft	19.7ft	23ft	26.2ft	29.5ft	32.8ft	36.1ft	39.4ft	42.7ft	45.9ft	49.2ft	52.5ft	55.8ft	59.1ft	62.3ft	65.6ft
7644lx	1911lx	849lx	478lx	306lx	212lx	156lx	119lx	94lx	76lx	63lx	53lx	45lx	39lx	34lx	30lx	26lx	24lx	21lx	19lx
710.2fcd	177.5fcd	78.9fcd	44.4fcd	28.4fcd	19.7fcd	14.5fcd	11.1fcd	8.8fcd	7.1fcd	5.9fcd	4.9fcd	4.2fcd	3.6fcd	3.2fcd	2.8fcd	2.5fcd	2.2fcd	2fcd	1.8fcd

#### Intensities in 0° c-plane

0°	2°	4°	6°	8°	10°	12°	14°	16°	18°	20°	22°	24°	26°	28°	30°	32°	34°	36°	38°
7644	7295	6566	5572	4421	3377	2546	1934	1503	1213	1018	855	692	515	328	171	63	16	9	8
100%	95%	86%	73%	58%	44%	33%	25%	20%	16%	13%	11%	9%	7%	4%	2%	1%	0%	0%	0%

#### Intensities in 90° c-plane

0°	2°	4°	6°	8°	10°	12°	14°	16°	18°	20°	22°	24°	26°	28°	30°	32°	34°	36°	38°
7644	7466	6691	5648	4487	3369	2457	1872	1469	1188	987	829	669	480	303	154	49	12	10	9
100%	98%	88%	74%	59%	44%	32%	24%	19%	16%	13%	11%	9%	6%	4%	2%	1%	0%	0%	0%

#### Intensities in 180° c-plane

0°	2°	4°	6°	8°	10°	12°	14°	16°	18°	20°	22°	24°	26°	28°	30°	32°	34°	36°	38°
7644	7446	6693	5634	4470	3388	2509	1886	1465	1185	978	803	629	438	267	126	43	13	9	9
100%	97%	88%	74%	58%	44%	33%	25%	19%	16%	13%	11%	8%	6%	3%	2%	1%	0%	0%	0%

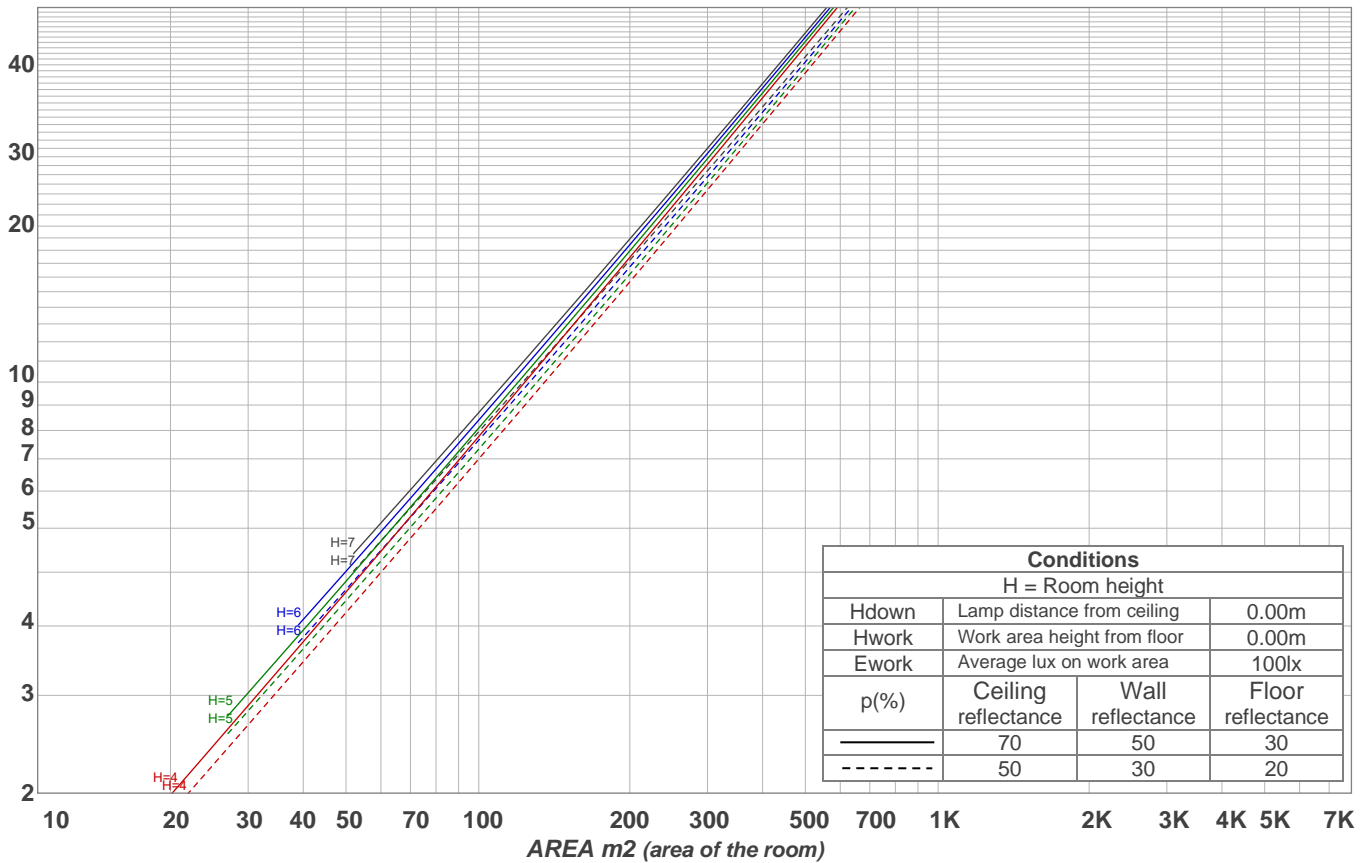
#### Intensities in 270° c-plane

0°	2°	4°	6°	8°	10°	12°	14°	16°	18°	20°	22°	24°	26°	28°	30°	32°	34°	36°	38°
7644	7307	6571	5571	4429	3347	2549	1965	1544	1240	1020	848	669	480	297	146	44	16	9	7
100%	96%	86%	73%	58%	44%	33%	26%	20%	16%	13%	11%	9%	6%	4%	2%	1%	0%	0%	0%

Beam angle 50%	Field angle 10%	Cutoff angle 2,5%	Intensity ratio in 120° cone	Intensity ratio in 90° cone
18.2°	45.6°	58.7°	98.7%	98.2%

LAMPS (number of lamps)  
50

### Light planning Luminaire budgetary diagram



### Luminaire budgetary diagram AREA m2 (area of the room) Coefficients of Utilization

Ceiling reflectance	80				70				50			30			10			0
Wall reflectance	70	50	30	10	70	50	30	10	50	30	10	50	30	10	50	30	10	0
Floor reflectance	20	20	20	20	20	20	20	20	20	20	20	20	20	20	20	20	20	0
RCR	(RCR: Room Cavity Ratio) Room Values are expressed as percentage of Lumens delivered to the task surface																	
0	119	119	119	119	116	116	116	116	111	111	111	106	106	106	102	102	102	100
1	115	113	111	109	112	110	109	107	107	105	104	103	102	101	99	99	98	96
2	111	107	104	102	109	106	103	101	103	100	98	100	98	96	97	96	94	93
3	108	103	99	96	106	101	98	96	99	96	94	97	94	93	95	93	91	90
4	104	99	95	92	103	98	94	91	96	93	90	94	91	89	92	90	88	87
5	101	95	91	88	100	95	91	88	93	90	87	91	89	86	90	88	86	85
6	98	92	88	85	97	92	88	85	90	87	84	89	86	84	88	85	83	82
7	96	89	85	82	95	89	85	82	88	84	82	87	84	81	86	83	81	80
8	93	87	83	80	92	86	82	80	85	82	79	84	81	79	84	81	79	78
9	91	84	80	78	90	84	80	77	83	80	77	82	79	77	82	79	77	76
10	89	82	78	75	88	82	78	75	81	78	75	80	77	75	80	77	75	74

### Zonal Lumen Summary

0°-10°	10°-20°	20°-30°	30°-40°	40°-50°	50°-60°	60°-70°	70°-80°	80°-90°
493 lm	487 lm	251 lm	16.4 lm	4.31 lm	4.73 lm	5.86 lm	4.98 lm	5.52 lm
90°-100°	100°-110°	110°-120°	120°-130°	130°-140°	140°-150°	150°-160°	160°-170°	170°-180°
0.000 lm	0.000 lm	0.000 lm	0.000 lm	0.000 lm	0.000 lm	0.000 lm	0.000 lm	0.000 lm