

Light efficiency:



Output: 1281 lm

Light quality:

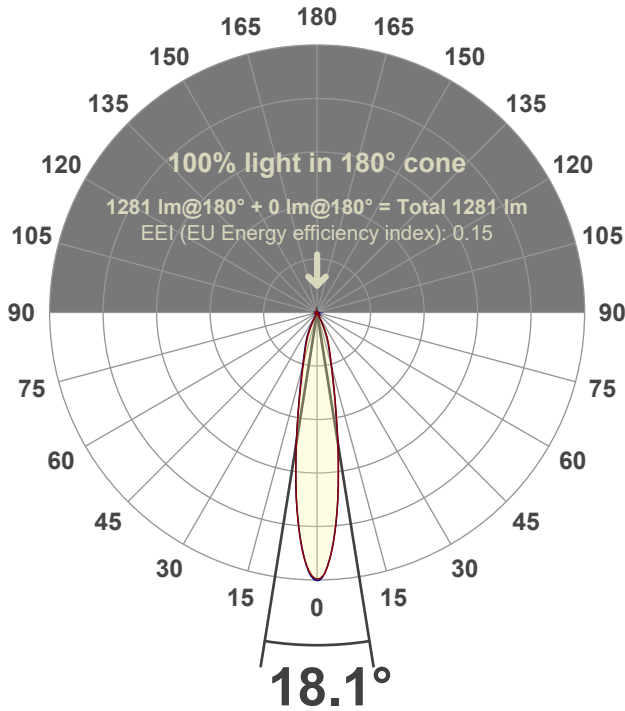


Peak: 8351 cd

Power: 14.2 W



Beam angle



Test number:

GR-F-CZ14-30k-SP-SQ-Rev2

Luminaire Model:

Graffiti Regress Square Fixed Downlight-CZ14 30k 15° Optic

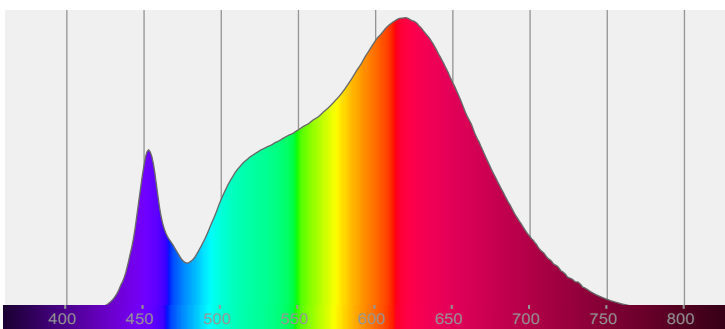
Date and time:

6/30/2022 9:37:22 PM

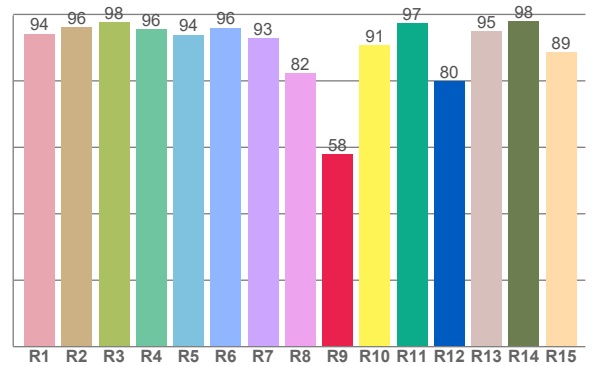
Delivered Lumens

1281

Spectra



CRI: 93.6 (R1-R8)



Color parameters

	Color rendering index	Red component	Color fidelity	Color gamut	Color quality scale	Color coordinate cie 1931	Color coordinate cie 1931	Color coordinate	Color coordinate	Color deviation from black body
	CRI	CRI R9	TM30 R <sub>f</sub>	TM30 R <sub>g</sub>	CQS	x	y	u	v	Δuv
	93.6	57.8	92.3	99.3	91.9	0.437	0.408	0.249	0.349	0.0014

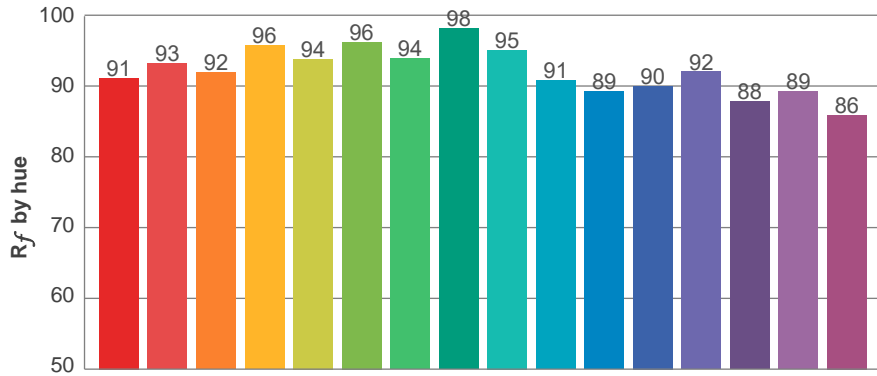
**$R_f$  92.3**  
Fidelity index  $R_f$

---

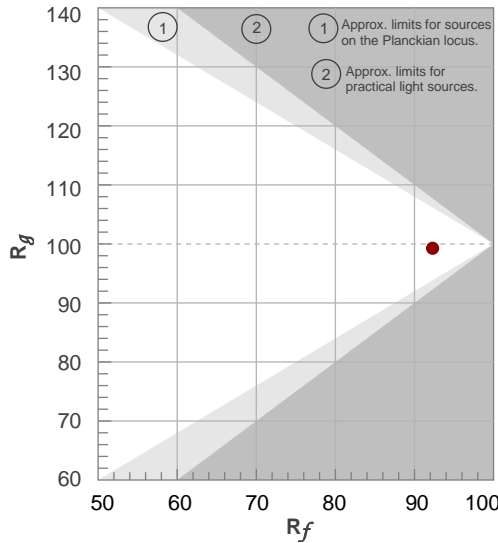
**$R_g$  99.3**  
Gammut index  $R_g$

TM30: 92.3

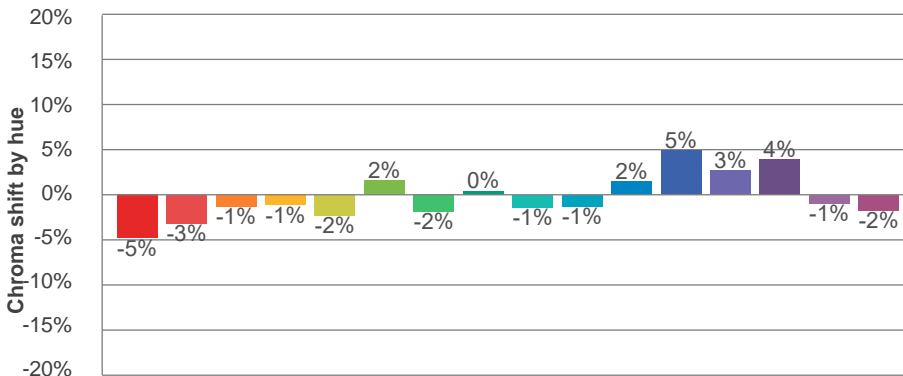
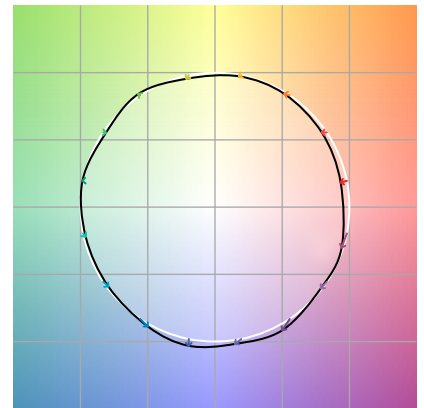
TM-30Color



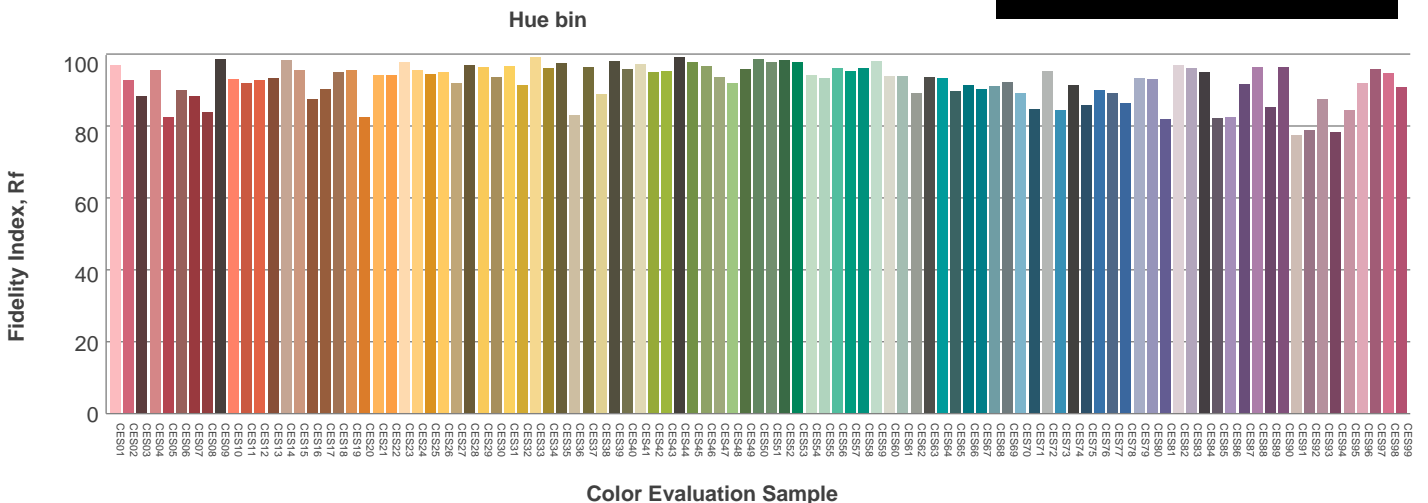
Hue Bin	$R_f$	Graphic shifts (%)	
		Chroma	Hue
1	91	-5%	0%
2	93	-3%	2%
3	92	-1%	4%
4	96	-1%	1%
5	94	-2%	2%
6	96	2%	1%
7	94	-2%	-1%
8	98	0%	0%
9	95	-1%	3%
10	91	-1%	5%
11	89	2%	8%
12	90	5%	1%
13	92	3%	-5%
14	88	4%	-9%
15	89	-1%	-6%
16	86	-2%	-11%



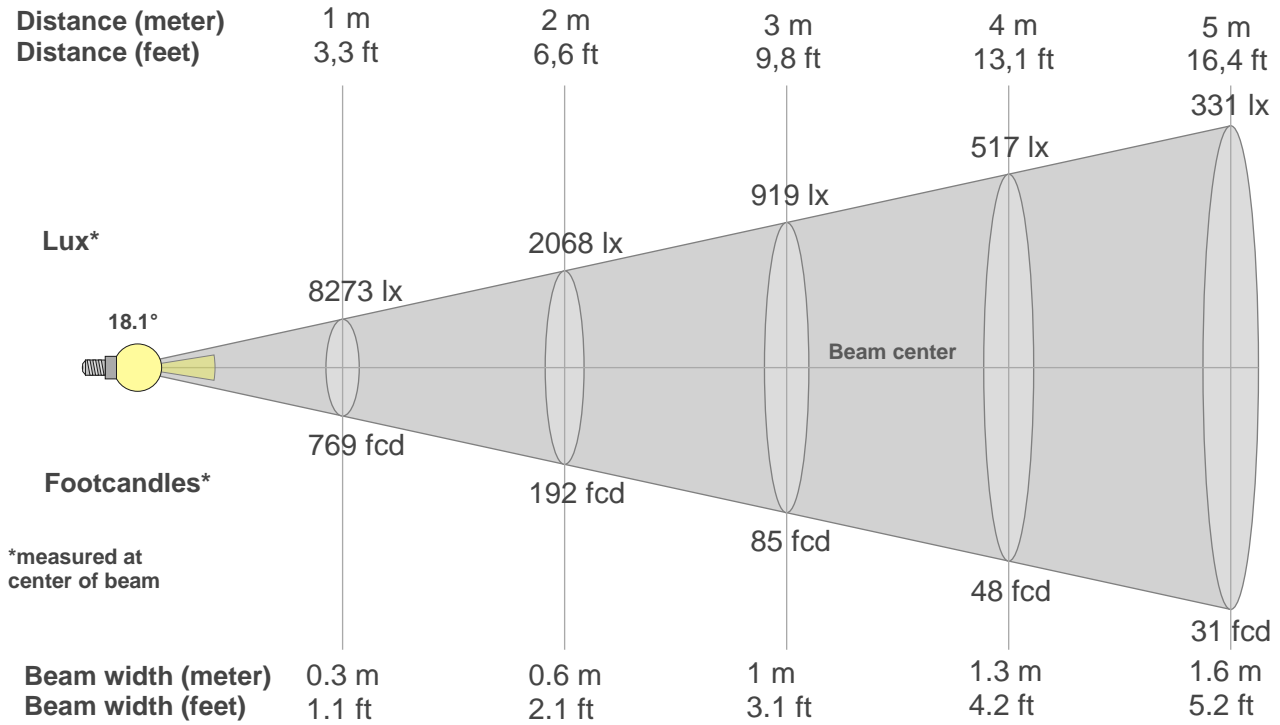
Color vector graphics



Color distortion



### Beam details



#### Beam intensities from 1-20m

1m	2m	3m	4m	5m	6m	7m	8m	9m	10m	11m	12m	13m	14m	15m	16m	17m	18m	19m	20m
3.3ft	6.6ft	9.8ft	13.1ft	16.4ft	19.7ft	23ft	26.2ft	29.5ft	32.8ft	36.1ft	39.4ft	42.7ft	45.9ft	49.2ft	52.5ft	55.8ft	59.1ft	62.3ft	65.6ft
8273lx	2068lx	919lx	517lx	331lx	230lx	169lx	129lx	102lx	83lx	68lx	57lx	49lx	42lx	37lx	32lx	29lx	26lx	23lx	21lx
768.6fcd	192.2fcd	85.4fcd	48fcd	30.7fcd	21.4fcd	15.7fcd	12fcd	9.5fcd	7.7fcd	6.4fcd	5.3fcd	4.5fcd	3.9fcd	3.4fcd	3fcd	2.7fcd	2.4fcd	2.1fcd	1.9fcd

#### Intensities in 0° c-plane

0°	2°	4°	6°	8°	10°	12°	14°	16°	18°	20°	22°	24°	26°	28°	30°	32°	34°	36°	38°
8273	8023	7254	6085	4831	3662	2704	2024	1599	1300	1063	851	633	394	131	71	27	16	12	10
100%	97%	88%	74%	58%	44%	33%	24%	19%	16%	13%	10%	8%	5%	2%	1%	0%	0%	0%	0%

#### Intensities in 90° c-plane

0°	2°	4°	6°	8°	10°	12°	14°	16°	18°	20°	22°	24°	26°	28°	30°	32°	34°	36°	38°
8273	7976	7186	6087	4789	3585	2654	1985	1525	1206	969	726	486	271	109	31	16	12	10	9
100%	96%	87%	74%	58%	43%	32%	24%	18%	15%	12%	9%	6%	3%	1%	0%	0%	0%	0%	0%

#### Intensities in 180° c-plane

0°	2°	4°	6°	8°	10°	12°	14°	16°	18°	20°	22°	24°	26°	28°	30°	32°	34°	36°	38°
8273	7960	7212	6104	4810	3622	2659	1958	1500	1202	977	757	530	309	130	43	19	14	12	10
100%	96%	87%	74%	58%	44%	32%	24%	18%	15%	12%	9%	6%	4%	2%	1%	0%	0%	0%	0%

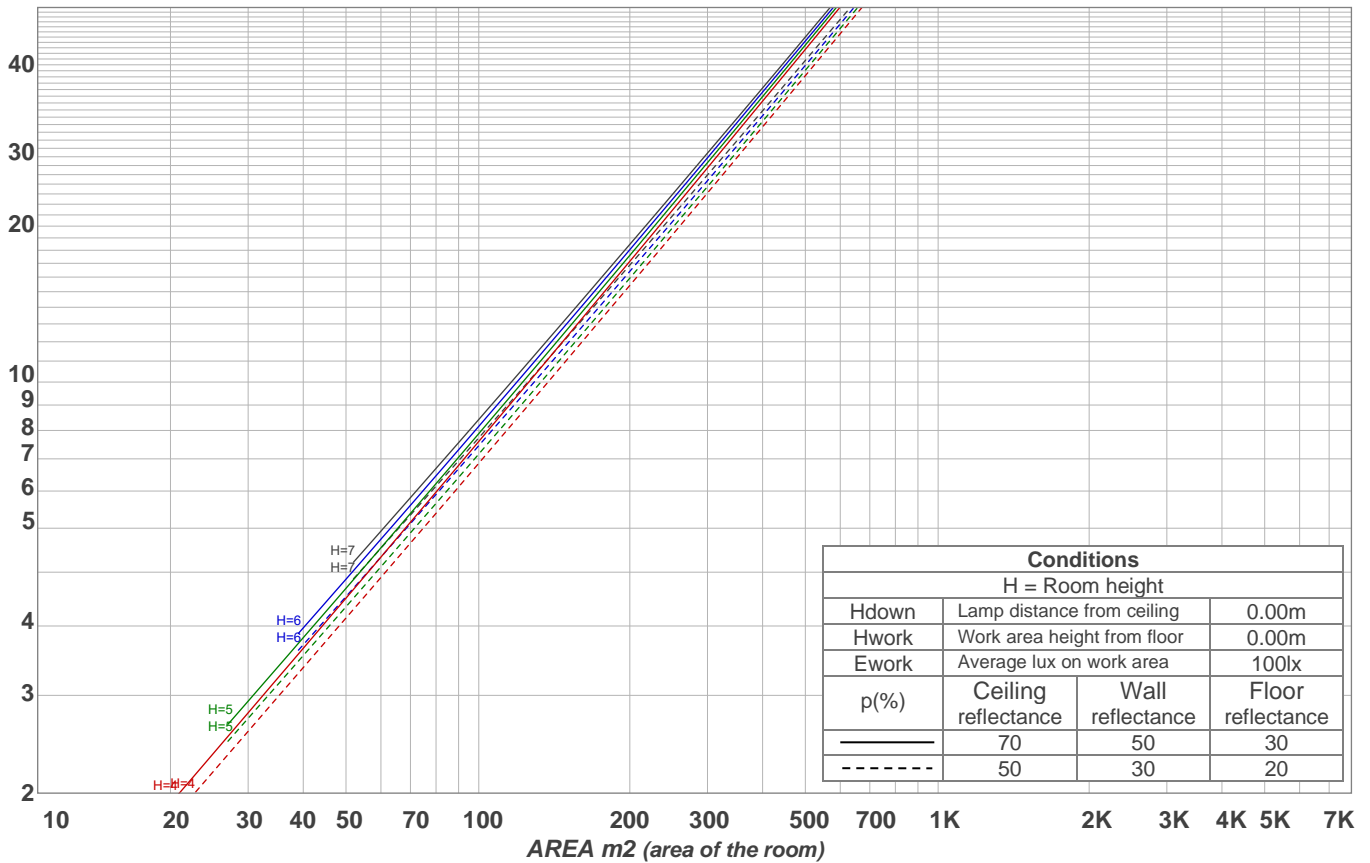
#### Intensities in 270° c-plane

0°	2°	4°	6°	8°	10°	12°	14°	16°	18°	20°	22°	24°	26°	28°	30°	32°	34°	36°	38°
8273	8036	7204	6074	4826	3655	2702	2030	1594	1296	1073	876	670	441	244	102	29	14	12	10
100%	97%	87%	73%	58%	44%	33%	25%	19%	16%	13%	11%	8%	5%	3%	1%	0%	0%	0%	0%

Beam angle 50%	Field angle 10%	Cutoff angle 2,5%	Intensity ratio in 120° cone	Intensity ratio in 90° cone
18.1°	43.5°	54.6°	99.1%	98.8%

LAMPS (number of lamps)  
50

### Light planning Luminaire budgetary diagram



### Luminaire budgetary diagram AREA m2 (area of the room) Coefficients of Utilization

Ceiling reflectance	80				70				50			30			10			0			
Wall reflectance	70	50	30	10	70	50	30	10	50	30	10	50	30	10	50	30	10	50	30	10	0
Floor reflectance	20	20	20	20	20	20	20	20	20	20	20	20	20	20	20	20	20	20	20	20	0
RCR	(RCR: Room Cavity Ratio)																				
	Room Values are expressed as percentage of Lumens delivered to the task surface																				
0	119	119	119	119	116	116	116	116	111	111	111	106	106	106	102	102	102	100	100	100	
1	115	113	111	109	113	111	109	108	107	106	104	103	102	101	100	99	98	98	97	97	
2	111	108	105	103	109	106	104	101	103	101	99	100	99	97	98	96	95	94	94	94	
3	108	104	100	97	106	102	99	97	100	97	95	98	95	94	96	94	92	91	91	91	
4	105	100	96	93	104	99	95	93	97	94	92	95	93	91	93	91	90	89	89	89	
5	102	97	93	90	101	96	92	89	94	91	89	93	90	88	91	89	87	86	86	86	
6	100	94	90	87	98	93	89	87	92	88	86	90	88	85	89	87	85	84	84	84	
7	97	91	87	84	96	90	87	84	89	86	84	88	85	83	87	85	83	82	82	82	
8	95	88	85	82	94	88	84	82	87	84	81	86	83	81	85	83	81	80	80	80	
9	92	86	82	80	92	86	82	80	85	82	79	84	81	79	84	81	79	78	78	78	
10	90	84	80	78	90	84	80	78	83	80	78	82	79	77	82	79	77	76	76	76	

### Zonal Lumen Summary

0°-10°	10°-20°	20°-30°	30°-40°	40°-50°	50°-60°	60°-70°	70°-80°	80°-90°
535 lm	510 lm	208 lm	9.46 lm	4.40 lm	2.91 lm	2.94 lm	3.63 lm	4.42 lm
90°-100°	100°-110°	110°-120°	120°-130°	130°-140°	140°-150°	150°-160°	160°-170°	170°-180°
0.000 lm	0.000 lm	0.000 lm	0.000 lm	0.000 lm	0.000 lm	0.000 lm	0.000 lm	0.000 lm