

Light efficiency:



Output: 743 lm

Light quality:

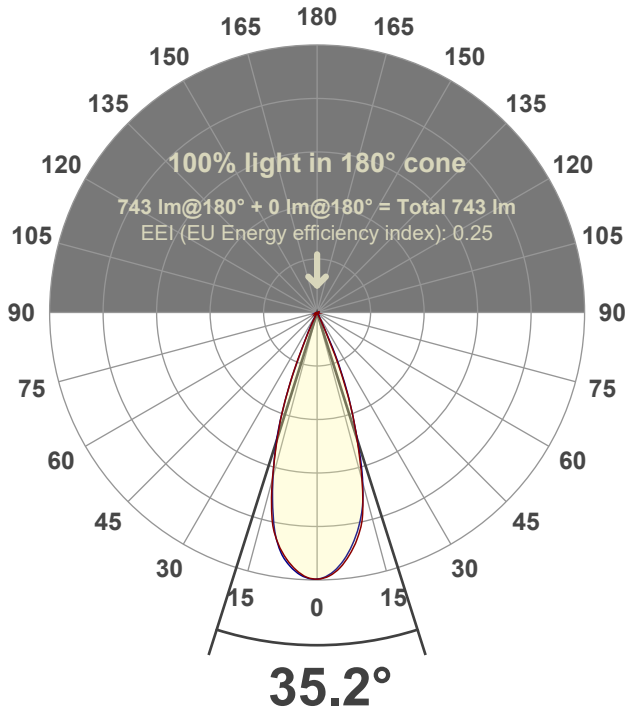


Peak: 2360 cd

Power: 15.0 W



Beam angle



Test number:

GR-F-F-A14-2722-FL-RD-Rev2

Luminaire Model:

Graffiti Flat Round Fixed Downlight-A14-2722 38° Optic

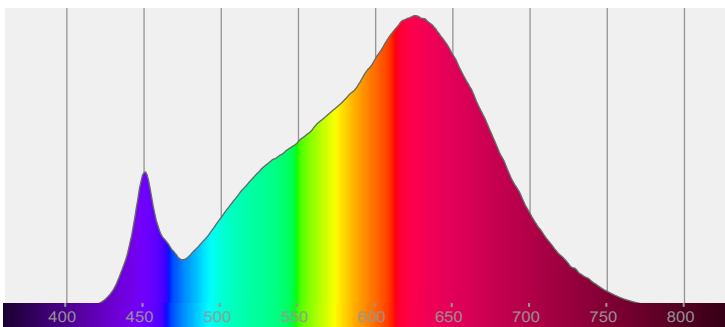
Date and time:

3/24/2022 7:01:02 PM

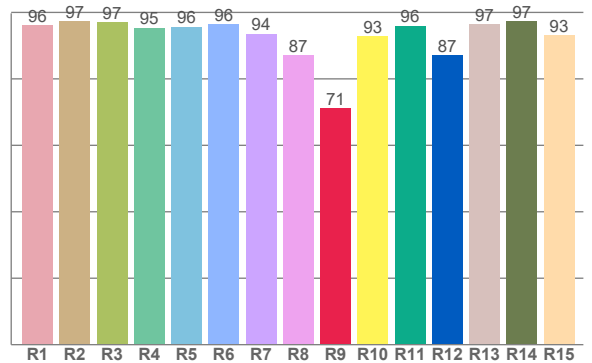
Delivered Lumens

743

Spectra



CRI: 94.8 (R1-R8)



Color parameters

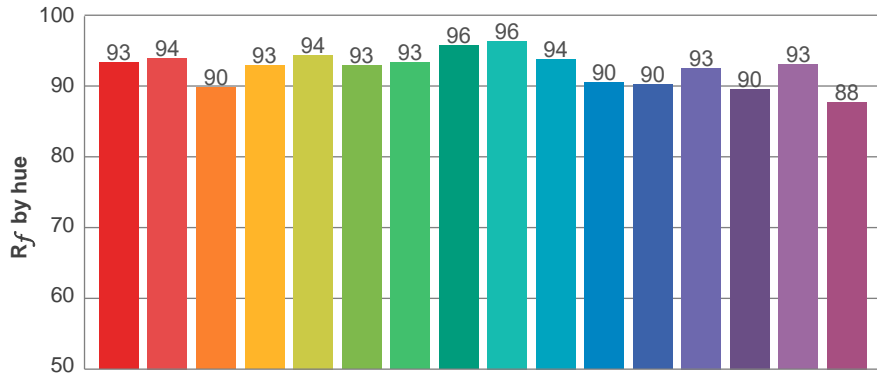
	Color rendering index	Red component	Color fidelity	Color gamut	Color quality scale	Color coordinate cie 1931	Color coordinate cie 1931	Color coordinate	Color coordinate	Color deviation from black body
	CRI	CRI R9	TM30 R _f	TM30 R _g	CQS	x	y	u	v	Δuv
	94.8	71.2	92.6	102.0	91.4	0.446	0.402	0.258	0.348	-0.0022

R_f 92.6
Fidelity index R_f

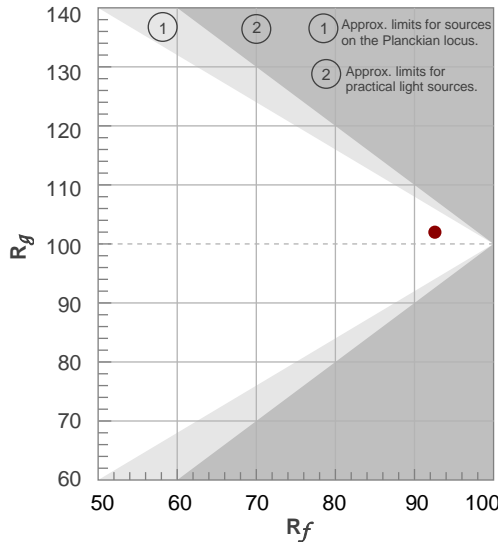
R_g 102.0
Gammut index R_g

TM30: 92.6

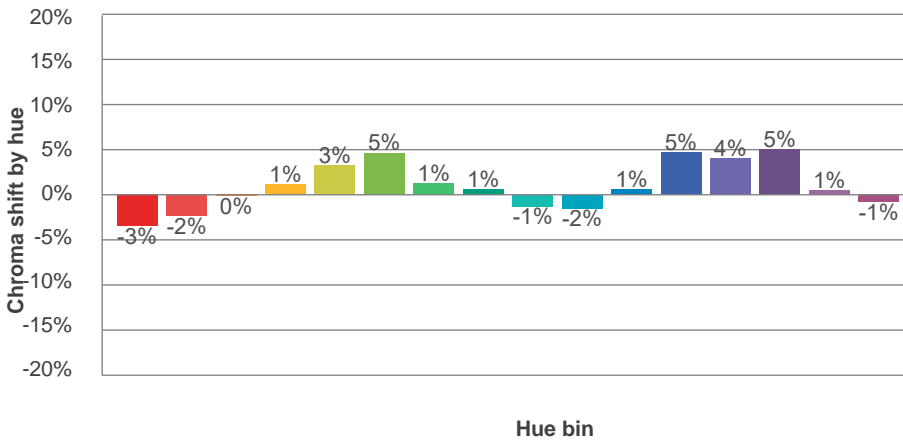
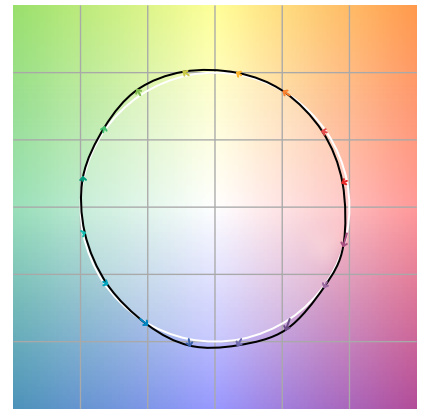
TM-30Color



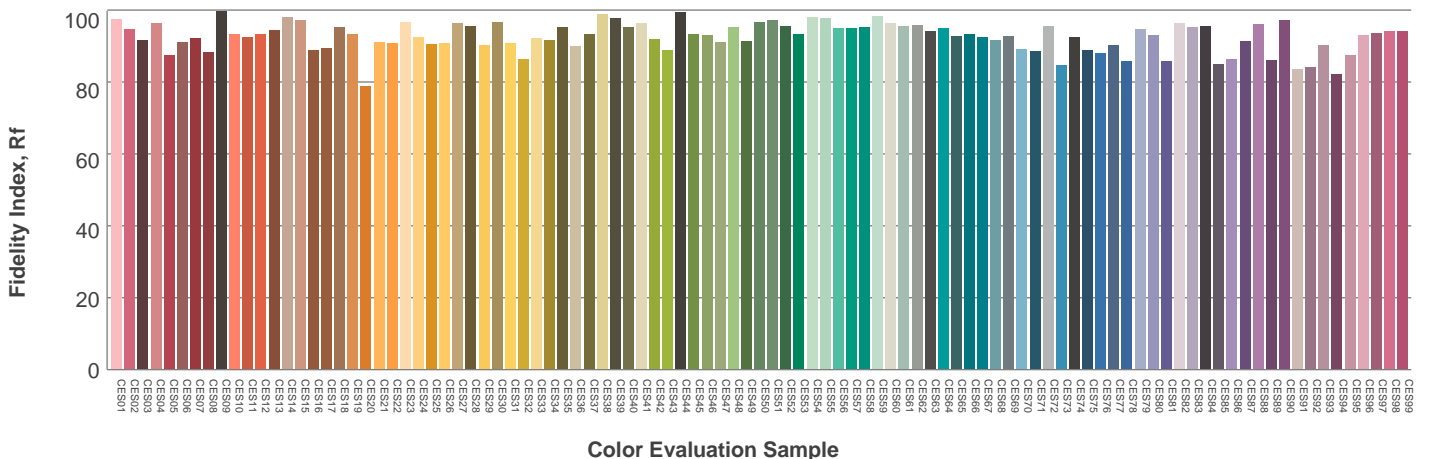
Hue Bin	R_f	Graphic shifts (%)	
		Chroma	Hue
1	93	-3%	-1%
2	94	-2%	2%
3	90	0%	5%
4	93	1%	3%
5	94	3%	3%
6	93	5%	0%
7	93	1%	-4%
8	96	1%	-3%
9	96	-1%	0%
10	94	-2%	3%
11	90	1%	7%
12	90	5%	2%
13	93	4%	-3%
14	90	5%	-7%
15	93	1%	-4%
16	88	-1%	-10%



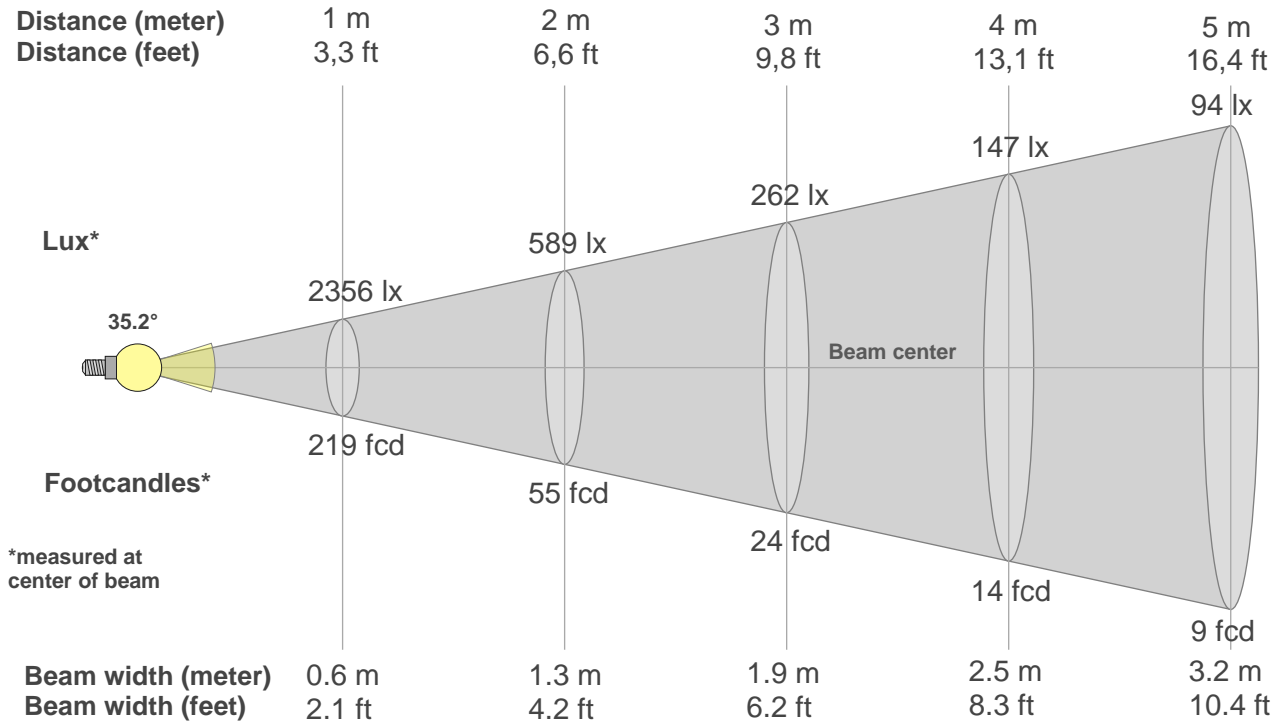
Color vector graphics



Color distortion



Beam details



Beam intensities from 1-20m

1m	2m	3m	4m	5m	6m	7m	8m	9m	10m	11m	12m	13m	14m	15m	16m	17m	18m	19m	20m
3.3ft	6.6ft	9.8ft	13.1ft	16.4ft	19.7ft	23ft	26.2ft	29.5ft	32.8ft	36.1ft	39.4ft	42.7ft	45.9ft	49.2ft	52.5ft	55.8ft	59.1ft	62.3ft	65.6ft
2356lx	589lx	262lx	147lx	94lx	65lx	48lx	37lx	29lx	24lx	19lx	16lx	14lx	12lx	10lx	9lx	8lx	7lx	7lx	6lx
218.9fcd	54.7fcd	24.3fcd	13.7fcd	8.8fcd	6.1fcd	4.5fcd	3.4fcd	2.7fcd	2.2fcd	1.8fcd	1.5fcd	1.3fcd	1.1fcd	1fcd	0.9fcd	0.8fcd	0.7fcd	0.6fcd	0.5fcd

Intensities in 0° c-plane

0°	2°	4°	6°	8°	10°	12°	14°	16°	18°	20°	22°	24°	26°	28°	30°	32°	34°	36°	38°
2356	2341	2299	2233	2144	2039	1894	1669	1398	1118	853	550	272	106	37	16	8	5	4	3
100%	99%	98%	95%	91%	87%	80%	71%	59%	47%	36%	23%	12%	4%	2%	1%	0%	0%	0%	0%

Intensities in 90° c-plane

0°	2°	4°	6°	8°	10°	12°	14°	16°	18°	20°	22°	24°	26°	28°	30°	32°	34°	36°	38°
2356	2333	2285	2210	2111	1994	1853	1674	1435	1127	859	597	337	103	27	10	6	4	3	2
100%	99%	97%	94%	90%	85%	79%	71%	61%	48%	36%	25%	14%	4%	1%	0%	0%	0%	0%	0%

Intensities in 180° c-plane

0°	2°	4°	6°	8°	10°	12°	14°	16°	18°	20°	22°	24°	26°	28°	30°	32°	34°	36°	38°
2356	2347	2303	2238	2154	2046	1904	1665	1391	1117	838	529	242	93	30	11	7	5	4	3
100%	100%	98%	95%	91%	87%	81%	71%	59%	47%	36%	22%	10%	4%	1%	0%	0%	0%	0%	0%

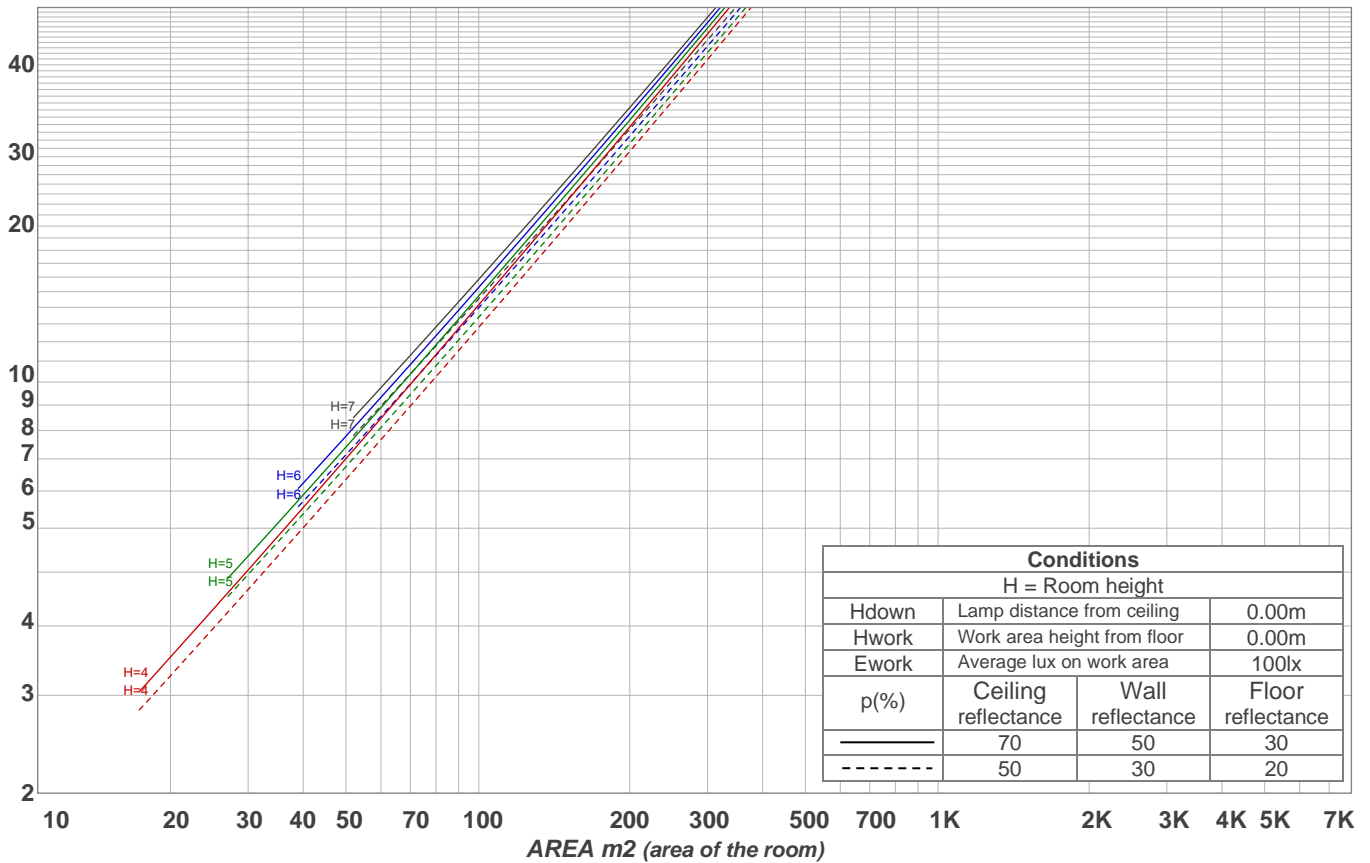
Intensities in 270° c-plane

0°	2°	4°	6°	8°	10°	12°	14°	16°	18°	20°	22°	24°	26°	28°	30°	32°	34°	36°	38°
2356	2349	2318	2261	2175	2044	1860	1634	1389	1136	830	511	253	117	50	21	9	5	4	4
100%	100%	98%	96%	92%	87%	79%	69%	59%	48%	35%	22%	11%	5%	2%	1%	0%	0%	0%	0%

Beam angle 50%	Field angle 10%	Cutoff angle 2,5%	Intensity ratio in 120° cone	Intensity ratio in 90° cone
35.2°	48.7°	54.2°	99.1%	98.7%

LAMPS (number of lamps)
50

Light planning Luminaire budgetary diagram



Luminaire budgetary diagram AREA m2 (area of the room) Coefficients of Utilization

Ceiling reflectance	80				70				50			30			10			0			
Wall reflectance	70	50	30	10	70	50	30	10	50	30	10	50	30	10	50	30	10	50	30	10	0
Floor reflectance	20	20	20	20	20	20	20	20	20	20	20	20	20	20	20	20	20	20	20	20	0
RCR	(RCR: Room Cavity Ratio)																				
	Room Values are expressed as percentage of Lumens delivered to the task surface																				
0	119	119	119	119	116	116	116	116	111	111	111	106	106	106	102	102	102	100	100	100	
1	115	113	111	109	112	110	109	107	106	105	104	103	102	101	99	99	98	96	96	96	
2	111	107	104	102	109	106	103	100	102	100	98	100	98	96	97	95	94	93	93	93	
3	107	103	99	96	106	101	98	95	99	96	94	97	94	92	94	93	91	90	90	90	
4	104	99	94	91	102	97	94	91	95	92	90	94	91	89	92	90	88	87	87	87	
5	101	95	91	88	99	94	90	87	92	89	86	91	88	86	89	87	85	84	84	84	
6	98	92	87	84	97	91	87	84	90	86	83	88	85	83	87	84	82	81	81	81	
7	95	89	84	81	94	88	84	81	87	83	81	86	83	80	85	82	80	79	79	79	
8	92	86	81	79	91	85	81	78	84	81	78	83	80	78	83	80	78	77	77	77	
9	90	83	79	76	89	83	79	76	82	78	76	81	78	76	80	77	75	74	74	74	
10	87	81	77	74	87	80	76	74	80	76	74	79	76	73	78	75	73	72	72	72	

Zonal Lumen Summary

0°-10°	10°-20°	20°-30°	30°-40°	40°-50°	50°-60°	60°-70°	70°-80°	80°-90°
209 lm	408 lm	113 lm	3.21 lm	1.61 lm	1.73 lm	1.83 lm	2.22 lm	2.74 lm
90°-100°	100°-110°	110°-120°	120°-130°	130°-140°	140°-150°	150°-160°	160°-170°	170°-180°
0.000 lm	0.000 lm	0.000 lm	0.000 lm	0.000 lm	0.000 lm	0.000 lm	0.000 lm	0.000 lm