

Light efficiency:



Output: 620 lm

Light quality:

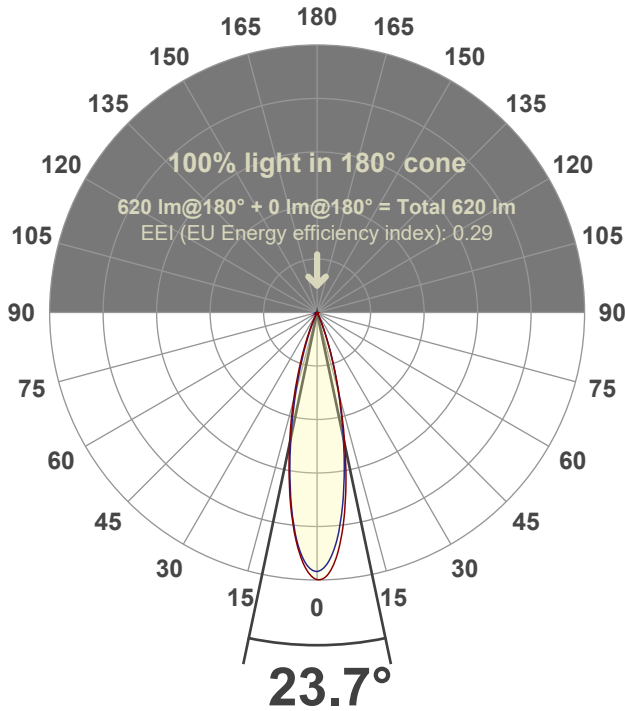


Peak: 3249 cd

Power: 15.0 W



Beam angle



Test number:

GR-F-F-A14-2722-NF-SQ-91A-Rev2

Luminaire Model:

Graffiti Flat Square Fixed Downlight-A14-2722 24° Optic-Solite

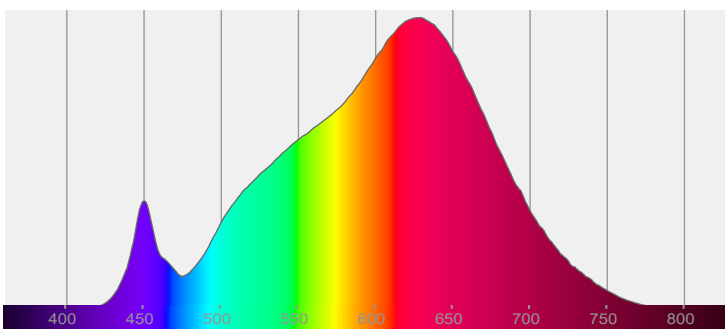
Date and time:

6/30/2022 5:46:06 PM

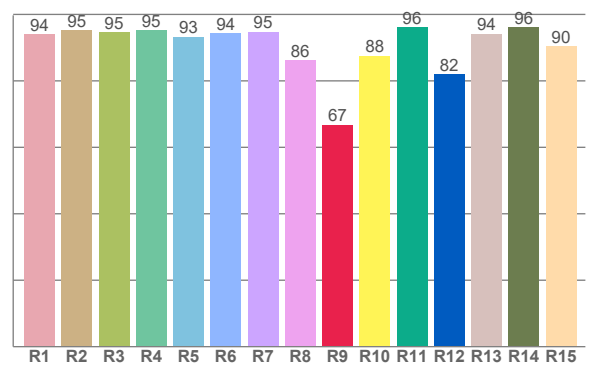
Delivered Lumens

620

Spectra



CRI: 93.4 (R1-R8)



Color parameters

	Color rendering index	Red component	Color fidelity	Color gamut	Color quality scale	Color coordinate cie 1931	Color coordinate cie 1931	Color coordinate	Color coordinate	Color deviation from black body
	CRI	CRI R9	TM30 R <sub>f</sub>	TM30 R <sub>g</sub>	CQS	x	y	u	v	Δuv
	93.4	66.8	92.8	100.6	91.4	0.458	0.414	0.260	0.352	0.0015

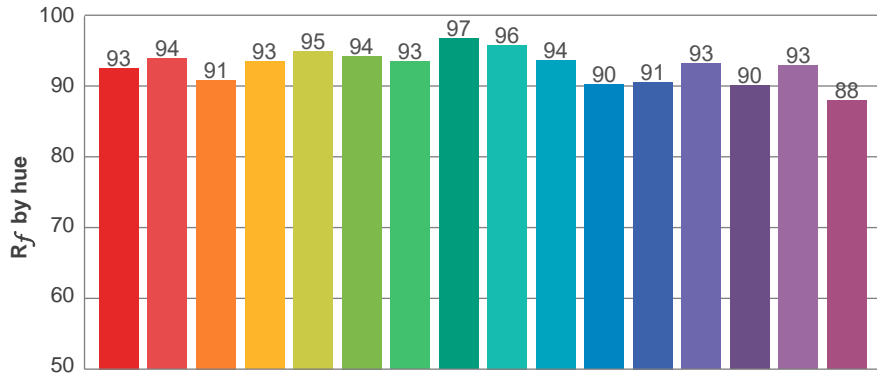
**$R_f$  92.8**  
Fidelity index  $R_f$

---

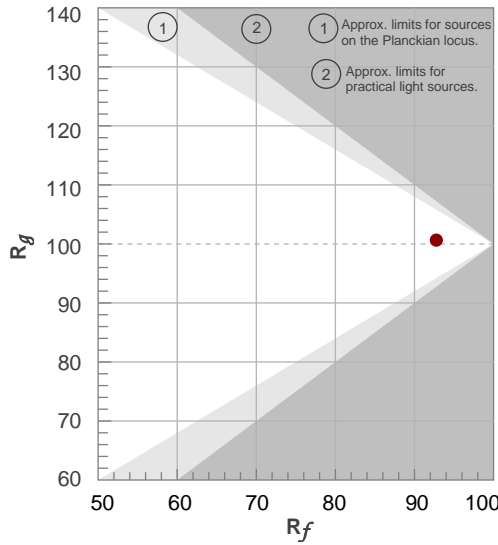
**$R_g$  100.6**  
Gammut index  $R_g$

TM30: 92.8

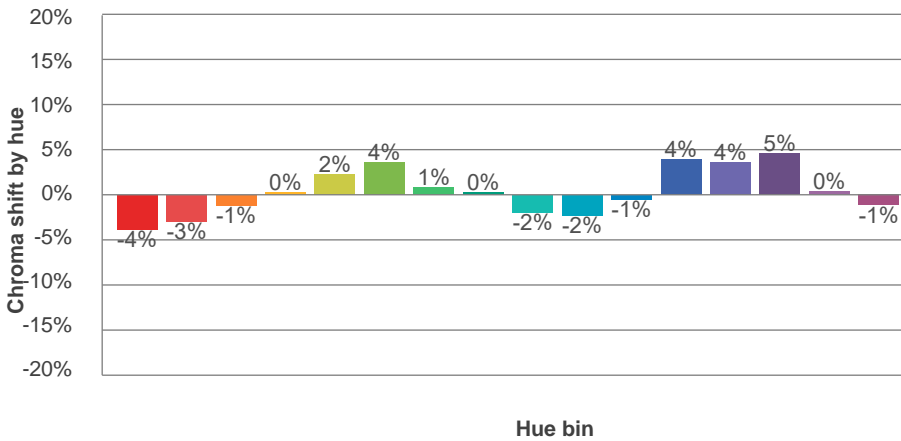
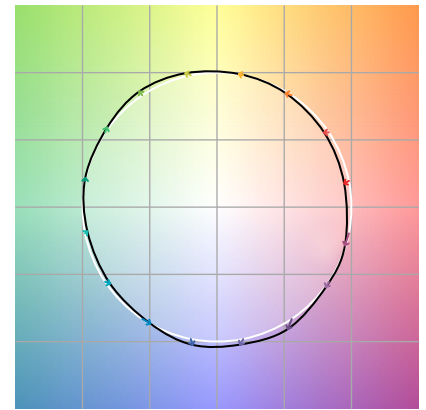
TM-30Color



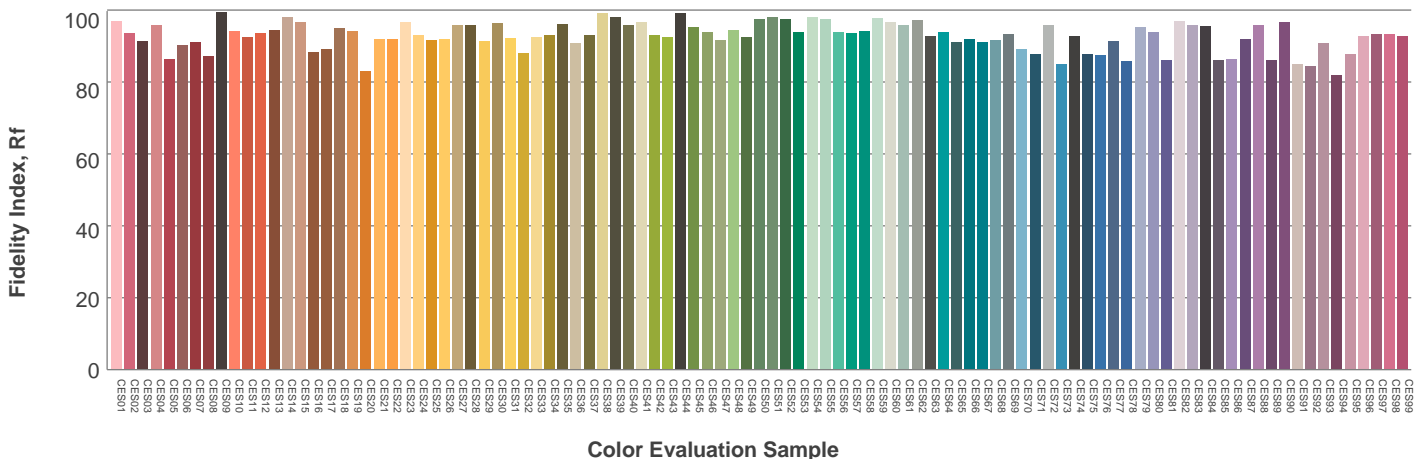
Hue Bin	$R_f$	Graphic shifts (%)	
		Chroma	Hue
1	93	-4%	-1%
2	94	-3%	2%
3	91	-1%	5%
4	93	0%	3%
5	95	2%	4%
6	94	4%	0%
7	93	1%	-4%
8	97	0%	-2%
9	96	-2%	-1%
10	94	-2%	3%
11	90	-1%	7%
12	91	4%	2%
13	93	4%	-3%
14	90	5%	-6%
15	93	0%	-4%
16	88	-1%	-9%



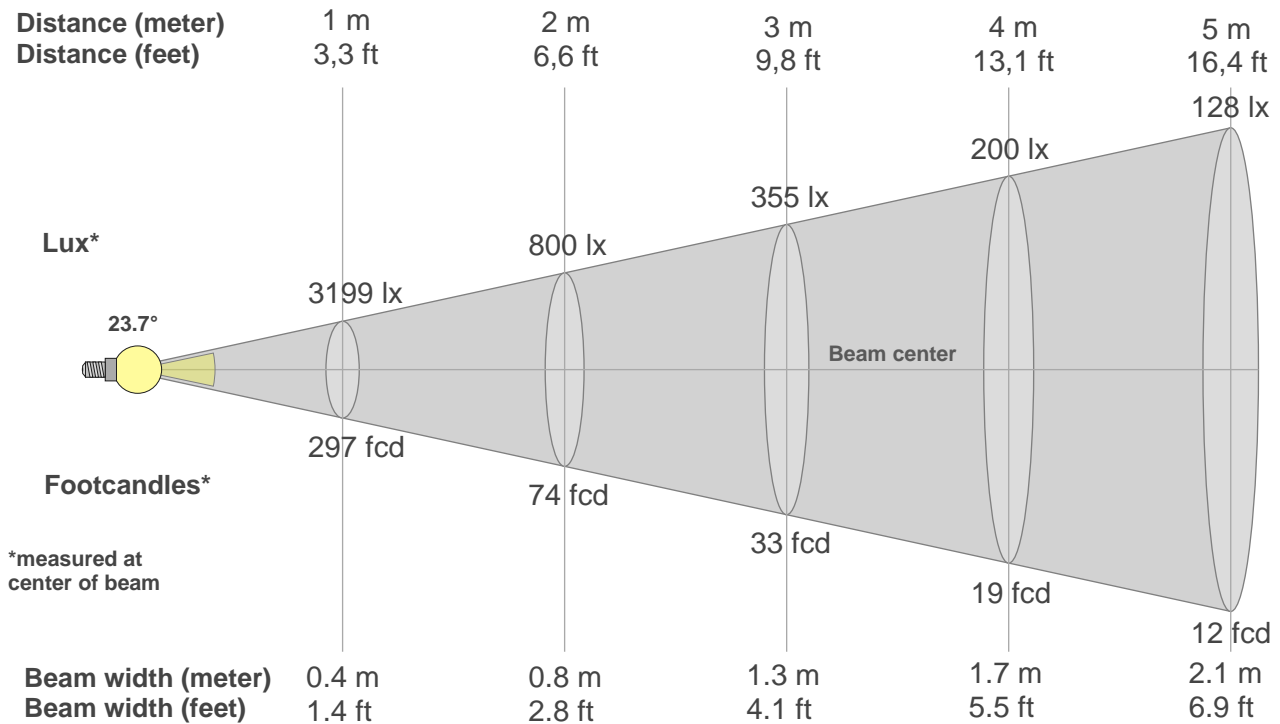
Color vector graphics



Color distortion



### Beam details



#### Beam intensities from 1-20m

1m	2m	3m	4m	5m	6m	7m	8m	9m	10m	11m	12m	13m	14m	15m	16m	17m	18m	19m	20m
3.3ft	6.6ft	9.8ft	13.1ft	16.4ft	19.7ft	23ft	26.2ft	29.5ft	32.8ft	36.1ft	39.4ft	42.7ft	45.9ft	49.2ft	52.5ft	55.8ft	59.1ft	62.3ft	65.6ft
3199lx	800lx	355lx	200lx	128lx	89lx	65lx	50lx	39lx	32lx	26lx	22lx	19lx	16lx	14lx	12lx	11lx	10lx	9lx	8lx
297.2fcd	74.3fcd	33fcd	18.6fcd	11.9fcd	8.3fcd	6.1fcd	4.6fcd	3.7fcd	3fcd	2.5fcd	2.1fcd	1.8fcd	1.5fcd	1.3fcd	1.2fcd	1fcd	0.9fcd	0.8fcd	0.7fcd

#### Intensities in 0° c-plane

0°	2°	4°	6°	8°	10°	12°	14°	16°	18°	20°	22°	24°	26°	28°	30°	32°	34°	36°	38°
3199	3210	3035	2765	2423	2031	1616	1235	898	613	386	233	140	81	47	28	18	14	11	8
100%	100%	95%	86%	76%	63%	51%	39%	28%	19%	12%	7%	4%	3%	1%	1%	1%	0%	0%	0%

#### Intensities in 90° c-plane

0°	2°	4°	6°	8°	10°	12°	14°	16°	18°	20°	22°	24°	26°	28°	30°	32°	34°	36°	38°
3199	3071	2888	2620	2285	1913	1536	1187	873	602	380	227	127	68	37	23	17	13	10	8
100%	96%	90%	82%	71%	60%	48%	37%	27%	19%	12%	7%	4%	2%	1%	1%	1%	0%	0%	0%

#### Intensities in 180° c-plane

0°	2°	4°	6°	8°	10°	12°	14°	16°	18°	20°	22°	24°	26°	28°	30°	32°	34°	36°	38°
3199	3146	2950	2674	2341	1974	1618	1280	970	695	477	308	187	109	62	37	24	16	12	11
100%	98%	92%	84%	73%	62%	51%	40%	30%	22%	15%	10%	6%	3%	2%	1%	1%	0%	0%	0%

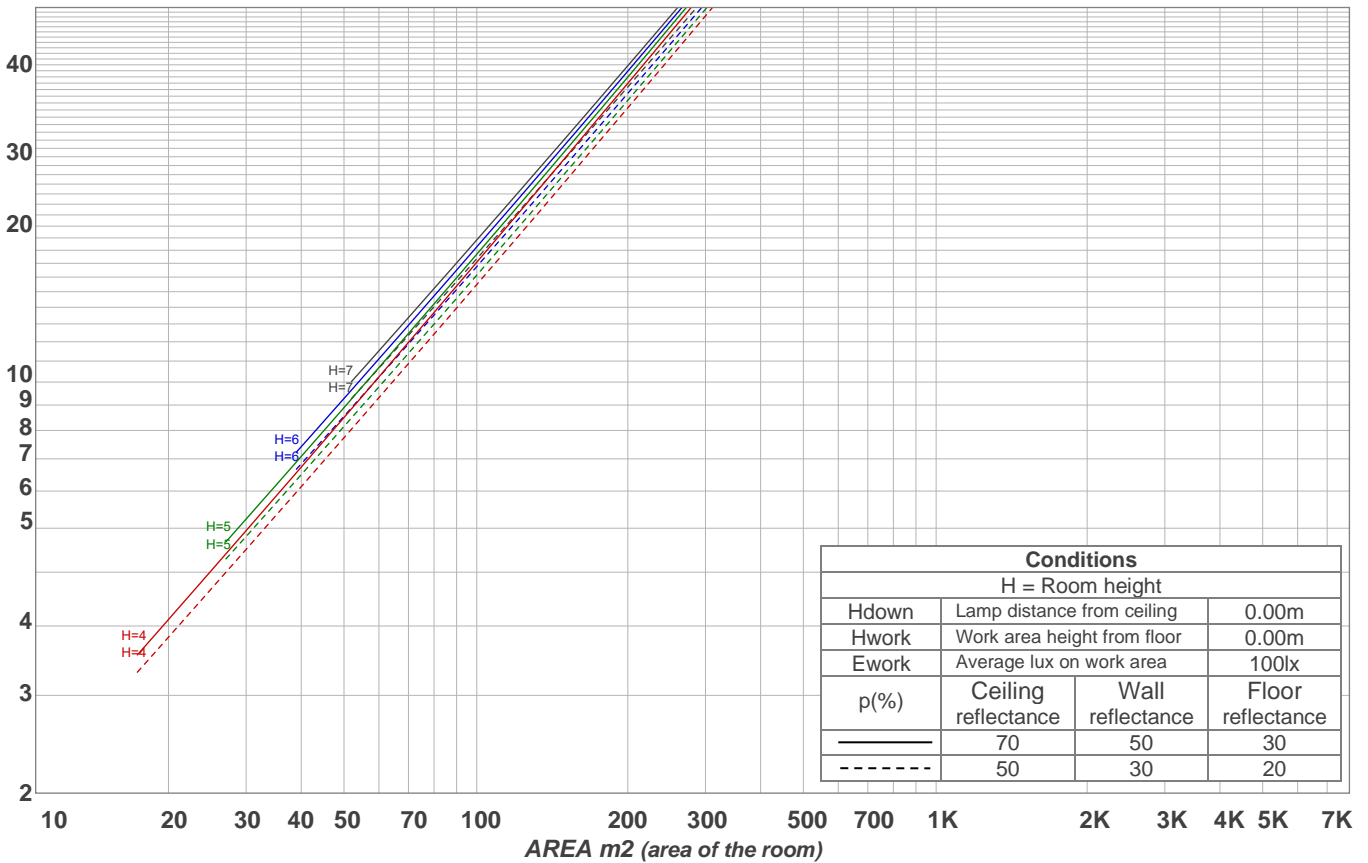
#### Intensities in 270° c-plane

0°	2°	4°	6°	8°	10°	12°	14°	16°	18°	20°	22°	24°	26°	28°	30°	32°	34°	36°	38°
3199	3085	2909	2640	2299	1916	1536	1184	868	597	377	230	132	73	40	26	19	15	12	9
100%	96%	91%	83%	72%	60%	48%	37%	27%	19%	12%	7%	4%	2%	1%	1%	1%	0%	0%	0%

Beam angle 50%	Field angle 10%	Cutoff angle 2,5%	Intensity ratio in 120° cone	Intensity ratio in 90° cone
23.7°	42.1°	52.1°	97.8%	96.7%

LAMPS (number of lamps)  
50

### Light planning Luminaire budgetary diagram



### Luminaire budgetary diagram AREA m2 (area of the room) Coefficients of Utilization

Ceiling reflectance	80				70				50			30			10			0			
Wall reflectance	70	50	30	10	70	50	30	10	50	30	10	50	30	10	50	30	10	50	30	10	0
Floor reflectance	20	20	20	20	20	20	20	20	20	20	20	20	20	20	20	20	20	20	20	20	0
RCR	(RCR: Room Cavity Ratio)																				
	Room Values are expressed as percentage of Lumens delivered to the task surface																				
0	119	119	119	119	116	116	116	116	111	111	111	106	106	106	102	102	102	100	100	100	
1	115	112	110	109	112	110	109	107	106	105	104	103	102	101	99	98	98	96	96	96	
2	111	107	104	101	109	106	103	100	102	100	98	100	98	96	97	95	94	93	93	93	
3	107	103	99	96	106	101	98	95	99	96	94	97	94	92	95	93	91	90	90	90	
4	104	99	95	92	103	98	94	91	96	93	90	94	91	89	92	90	88	87	87	87	
5	101	96	91	88	100	95	91	88	93	90	87	92	89	87	90	88	86	85	85	85	
6	99	93	88	85	97	92	88	85	91	87	85	89	86	84	88	86	84	83	83	83	
7	96	90	86	83	95	89	85	83	88	85	82	87	84	82	86	84	82	81	81	81	
8	94	87	83	81	93	87	83	80	86	83	80	85	82	80	84	82	80	79	79	79	
9	91	85	81	78	91	85	81	78	84	80	78	83	80	78	82	80	78	77	77	77	
10	89	83	79	77	89	83	79	76	82	79	76	81	78	76	81	78	76	75	75	75	

### Zonal Lumen Summary

0°-10°	10°-20°	20°-30°	30°-40°	40°-50°	50°-60°	60°-70°	70°-80°	80°-90°
241 lm	286 lm	61.9 lm	8.74 lm	4.25 lm	4.84 lm	4.91 lm	4.56 lm	4.10 lm
90°-100°	100°-110°	110°-120°	120°-130°	130°-140°	140°-150°	150°-160°	160°-170°	170°-180°
0.000 lm	0.000 lm	0.000 lm	0.000 lm	0.000 lm	0.000 lm	0.000 lm	0.000 lm	0.000 lm