

Light efficiency:



Output: 779 lm

Light quality:

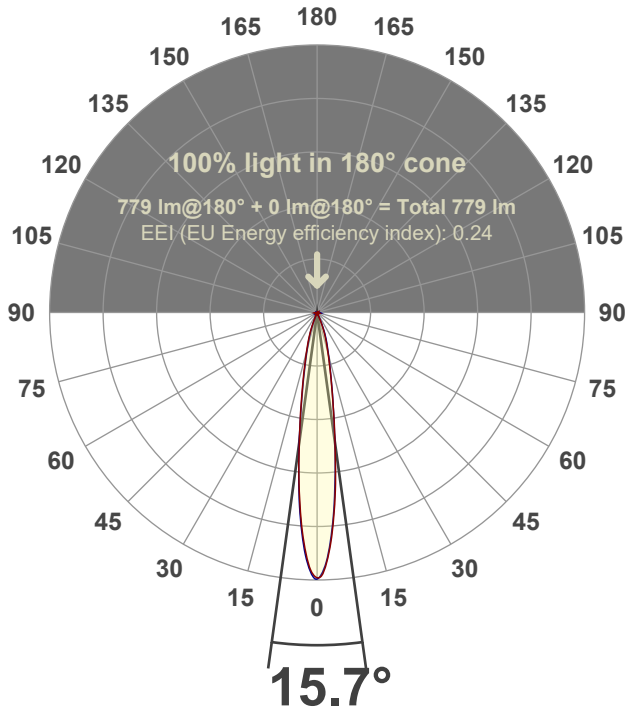


Peak: 6889 cd

Power: 15.0 W



Beam angle



Test number:

GR-F-F-A14-2722-SP-RD-Rev2

Luminaire Model:

Graffiti Flat Round Fixed Downlight-A14-2722 15° Optic

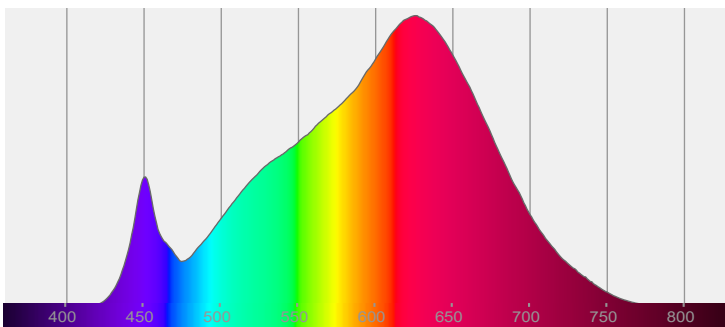
Date and time:

3/24/2022 7:35:37 PM

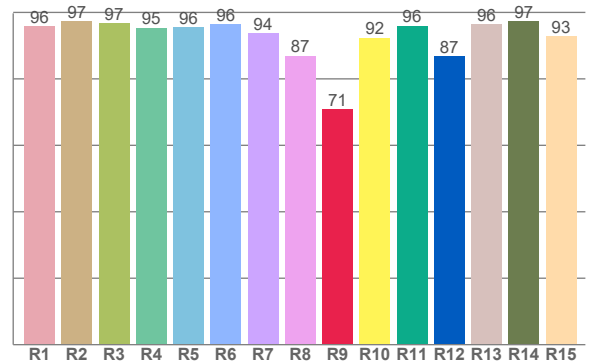
Delivered Lumens

779

Spectra



CRI: 94.7 (R1-R8)



Color parameters

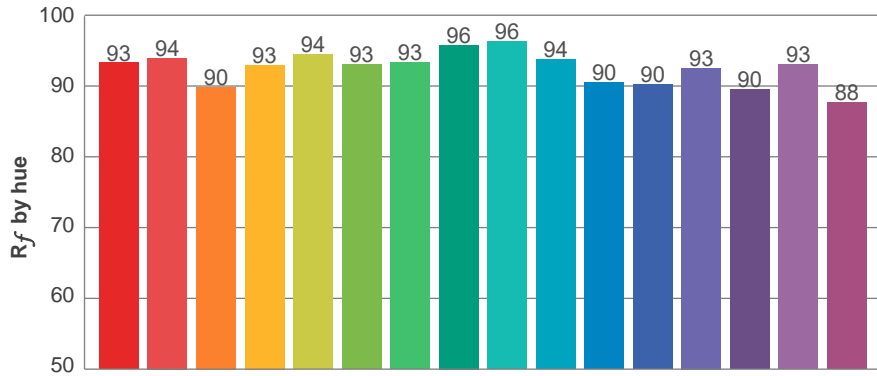
	Color rendering index	Red component	Color fidelity	Color gamut	Color quality scale	Color coordinate cie 1931	Color coordinate cie 1931	Color coordinate	Color coordinate	Color deviation from black body
	CRI	CRI R9	TM30 R _f	TM30 R _g	CQS	x	y	u	v	Δuv
	94.7	70.8	92.6	101.9	91.4	0.448	0.403	0.258	0.348	-0.0019

R_f 92.6
Fidelity index R_f

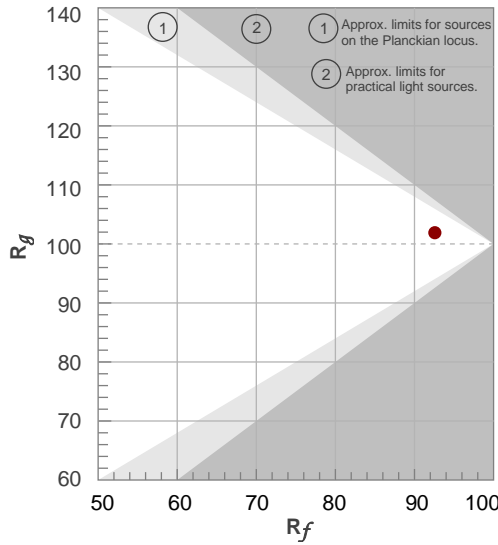
R_g 101.9
Gammut index R_g

TM30: 92.6

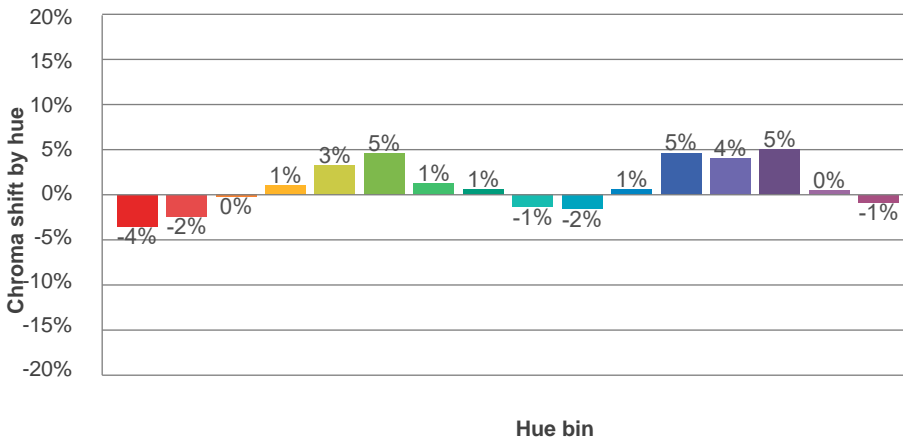
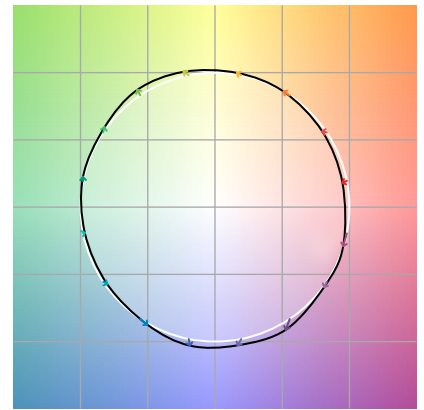
TM-30Color



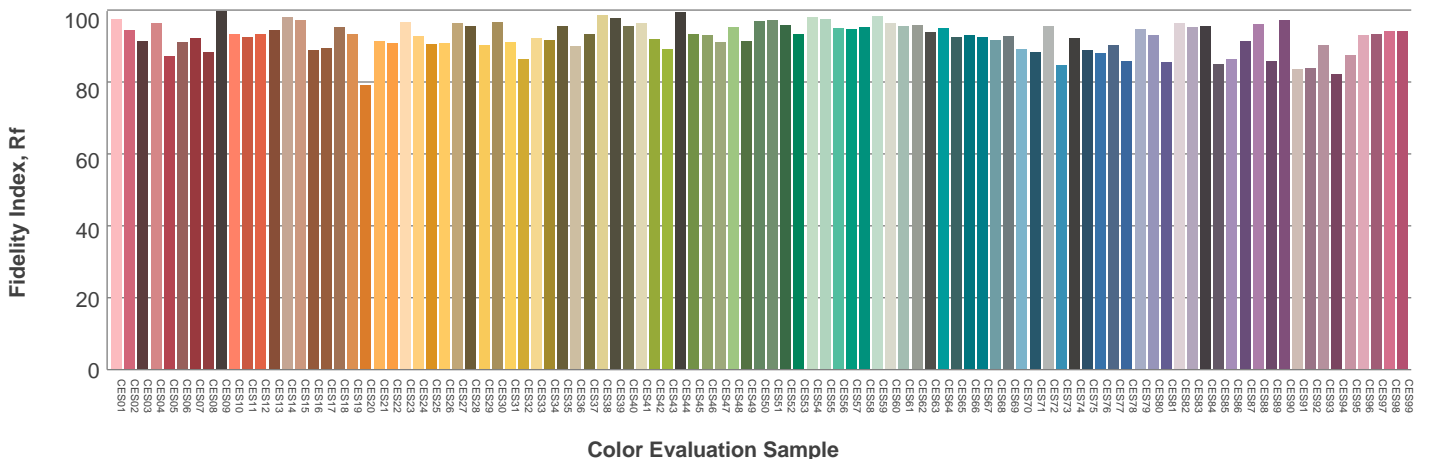
Hue Bin	R_f	Graphic shifts (%)	
		Chroma	Hue
1	93	-4%	-1%
2	94	-2%	2%
3	90	0%	5%
4	93	1%	3%
5	94	3%	3%
6	93	5%	0%
7	93	1%	-4%
8	96	1%	-3%
9	96	-1%	0%
10	94	-2%	3%
11	90	1%	7%
12	90	5%	2%
13	93	4%	-4%
14	90	5%	-7%
15	93	0%	-4%
16	88	-1%	-10%



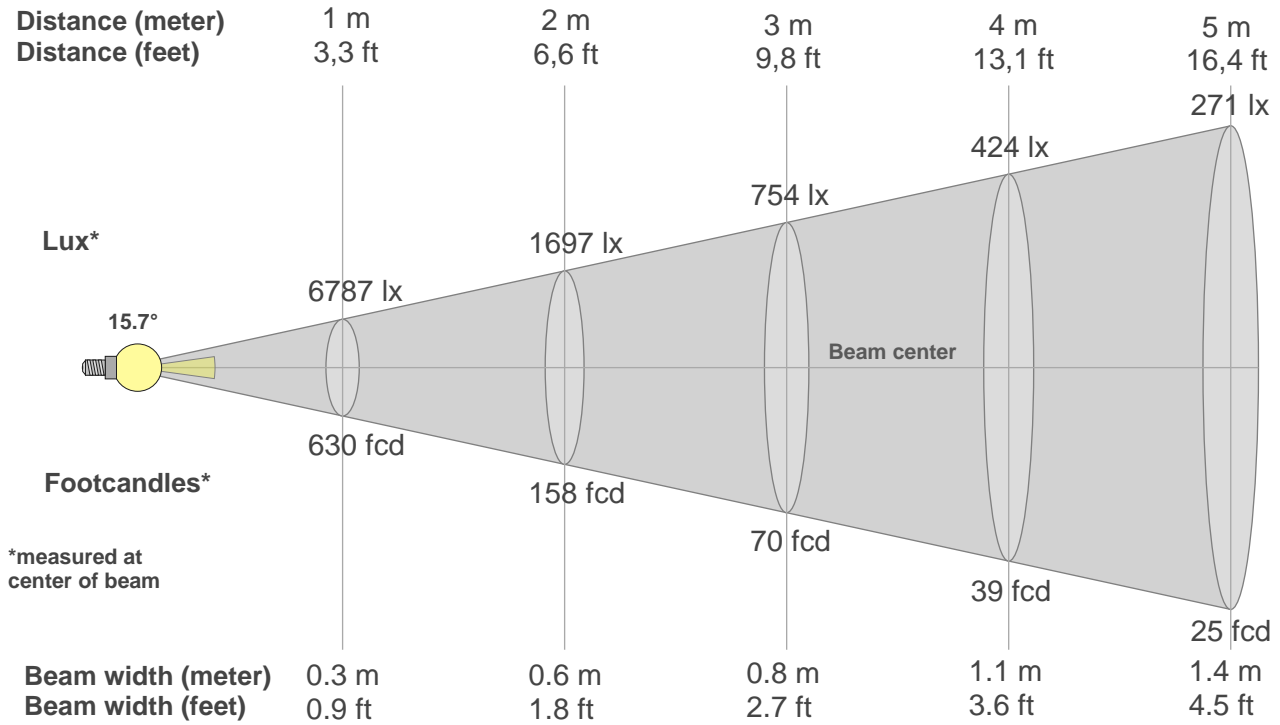
Color vector graphics



Color distortion



Beam details



Beam intensities from 1-20m

1m	2m	3m	4m	5m	6m	7m	8m	9m	10m	11m	12m	13m	14m	15m	16m	17m	18m	19m	20m
3.3ft	6.6ft	9.8ft	13.1ft	16.4ft	19.7ft	23ft	26.2ft	29.5ft	32.8ft	36.1ft	39.4ft	42.7ft	45.9ft	49.2ft	52.5ft	55.8ft	59.1ft	62.3ft	65.6ft
6787lx	1697lx	754lx	424lx	271lx	189lx	139lx	106lx	84lx	68lx	56lx	47lx	40lx	35lx	30lx	27lx	23lx	21lx	19lx	17lx
630.5fcd	157.6fcd	70.1fcd	39.4fcd	25.2fcd	17.5fcd	12.9fcd	9.9fcd	7.8fcd	6.3fcd	5.2fcd	4.4fcd	3.7fcd	3.2fcd	2.8fcd	2.5fcd	2.2fcd	1.9fcd	1.7fcd	1.6fcd

Intensities in 0° c-plane

0°	1°	2°	3°	4°	5°	6°	7°	8°	9°	10°	11°	12°	13°	14°	15°	16°	17°	18°	19°
6787	6799	6450	6100	5638	5094	4542	3939	3337	2855	2423	2035	1763	1492	1301	1125	973	854	736	632
100%	100%	95%	90%	83%	75%	67%	58%	49%	42%	36%	30%	26%	22%	19%	17%	14%	13%	11%	9%

Intensities in 90° c-plane

0°	1°	2°	3°	4°	5°	6°	7°	8°	9°	10°	11°	12°	13°	14°	15°	16°	17°	18°	19°
6787	6649	6466	6027	5550	5024	4436	3847	3335	2822	2412	2077	1759	1544	1330	1171	1035	909	810	711
100%	98%	95%	89%	82%	74%	65%	57%	49%	42%	36%	31%	26%	23%	20%	17%	15%	13%	12%	10%

Intensities in 180° c-plane

0°	1°	2°	3°	4°	5°	6°	7°	8°	9°	10°	11°	12°	13°	14°	15°	16°	17°	18°	19°
6787	6680	6429	6022	5597	5034	4470	3906	3341	2817	2421	2024	1740	1483	1261	1099	937	816	697	584
100%	98%	95%	89%	82%	74%	66%	58%	49%	42%	36%	30%	26%	22%	19%	16%	14%	12%	10%	9%

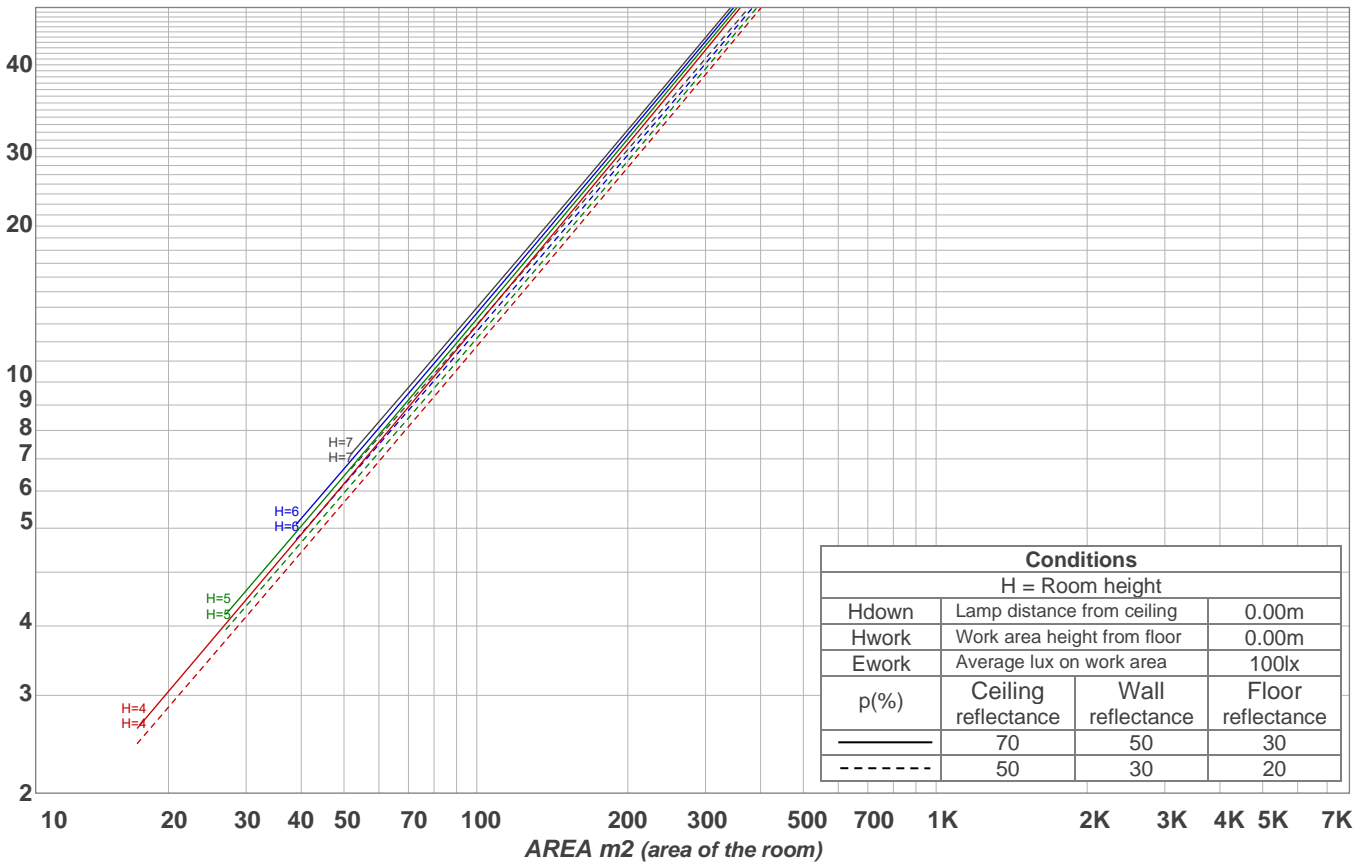
Intensities in 270° c-plane

0°	1°	2°	3°	4°	5°	6°	7°	8°	9°	10°	11°	12°	13°	14°	15°	16°	17°	18°	19°
6787	6718	6468	6152	5640	5128	4530	3913	3334	2819	2304	1972	1650	1390	1191	996	867	737	620	510
100%	99%	95%	91%	83%	76%	67%	58%	49%	42%	34%	29%	24%	20%	18%	15%	13%	11%	9%	8%

Beam angle 50%	Field angle 10%	Cutoff angle 2,5%	Intensity ratio in 120° cone	Intensity ratio in 90° cone
15.7°	36.6°	46.6°	98.8%	98.4%

LAMPS (number of lamps)
50

Light planning Luminaire budgetary diagram



Luminaire budgetary diagram AREA m2 (area of the room) Coefficients of Utilization

Ceiling reflectance	80				70				50			30			10			0			
Wall reflectance	70	50	30	10	70	50	30	10	50	30	10	50	30	10	50	30	10	50	30	10	0
Floor reflectance	20	20	20	20	20	20	20	20	20	20	20	20	20	20	20	20	20	20	20	20	0
RCR	(RCR: Room Cavity Ratio)																				
	Room Values are expressed as percentage of Lumens delivered to the task surface																				
0	119	119	119	119	116	116	116	116	111	111	111	106	106	106	102	102	102	100	100	100	
1	115	113	111	110	113	111	110	108	107	106	105	104	103	102	100	99	99	97	97	97	
2	112	109	106	104	110	107	105	102	104	102	100	101	100	98	98	97	96	95	95	95	
3	109	105	102	99	107	103	101	98	101	99	97	99	97	95	97	95	94	93	93	93	
4	106	101	98	95	105	100	97	95	99	96	94	97	95	93	95	93	92	91	91	91	
5	104	99	95	92	103	98	94	92	96	93	91	95	92	90	93	91	90	89	89	89	
6	101	96	92	90	100	95	92	90	94	91	89	93	90	88	92	90	88	87	87	87	
7	99	94	90	88	98	93	90	87	92	89	87	91	89	87	90	88	86	85	85	85	
8	97	92	88	86	96	91	88	86	90	87	85	90	87	85	89	86	85	84	84	84	
9	95	90	86	84	95	89	86	84	89	86	84	88	85	83	87	85	83	82	82	82	
10	94	88	85	82	93	88	84	82	87	84	82	86	84	82	86	83	82	81	81	81	

Zonal Lumen Summary

0°-10°	10°-20°	20°-30°	30°-40°	40°-50°	50°-60°	60°-70°	70°-80°	80°-90°
391 lm	315 lm	57.0 lm	2.72 lm	2.03 lm	2.58 lm	2.63 lm	3.04 lm	3.24 lm
90°-100°	100°-110°	110°-120°	120°-130°	130°-140°	140°-150°	150°-160°	160°-170°	170°-180°
0.000 lm	0.000 lm	0.000 lm	0.000 lm	0.000 lm	0.000 lm	0.000 lm	0.000 lm	0.000 lm