

Light efficiency:



Output: 682 lm

Light quality:

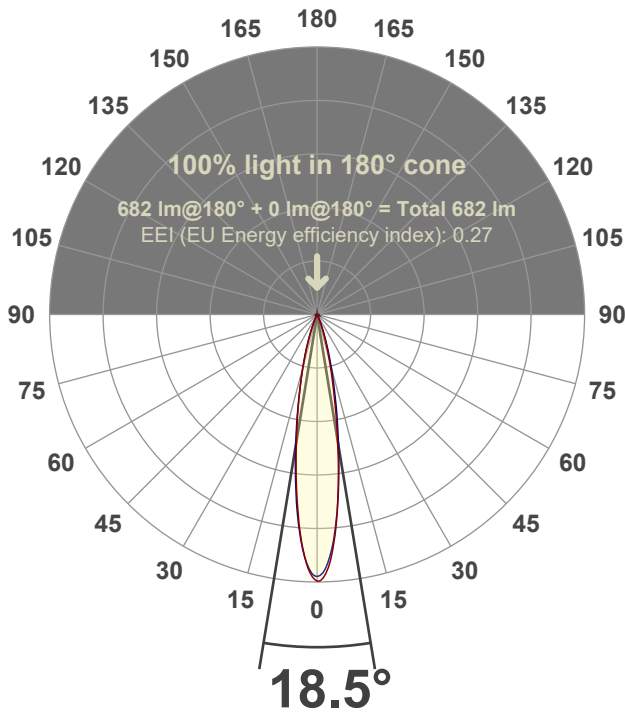


Peak: 4977 cd

Power: 15.0 W



Beam angle



Test number:

GR-F-F-A14-2722-SP-SQ-91A-Rev2

Luminaire Model:

Graffiti Flat Square Fixed Downlight-A14-2722 15° Optic-Solite

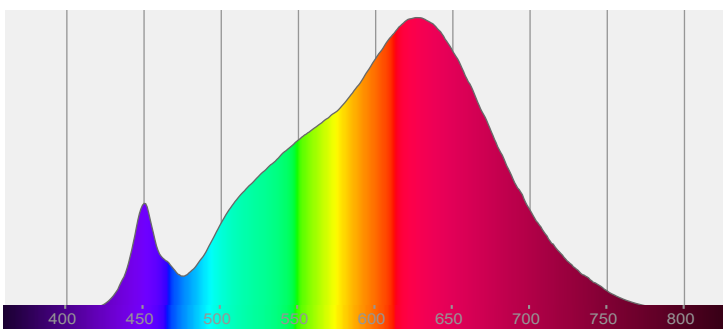
Date and time:

6/30/2022 5:35:26 PM

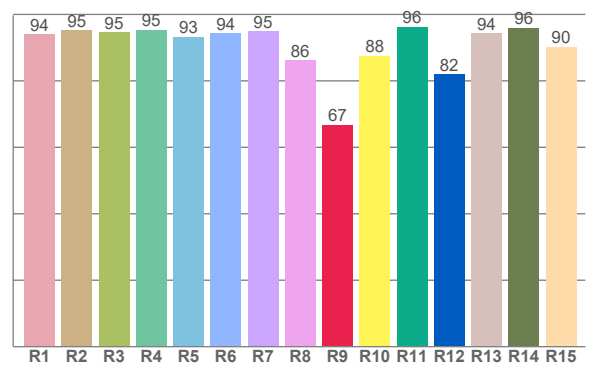
Delivered Lumens

682

Spectra



CRI: 93.5 (R1-R8)



Color parameters

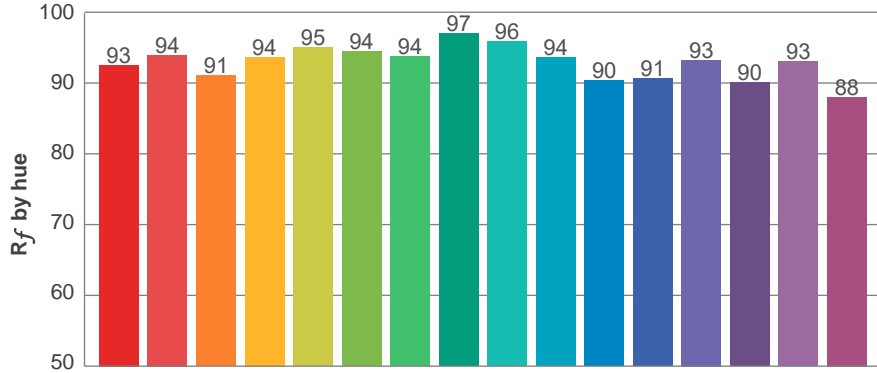
Color rendering index	Red component	Color fidelity	Color gamut	Color quality scale	Color coordinate cie 1931	Color coordinate cie 1931	Color coordinate	Color coordinate	Color deviation from black body
CRI	CRI R9	TM30 R _f	TM30 R _g	CQS	x	y	u	v	Δuv
93.5	66.7	92.9	100.5	91.5	0.459	0.415	0.260	0.353	0.0017

R_f 92.9
Fidelity index R_f

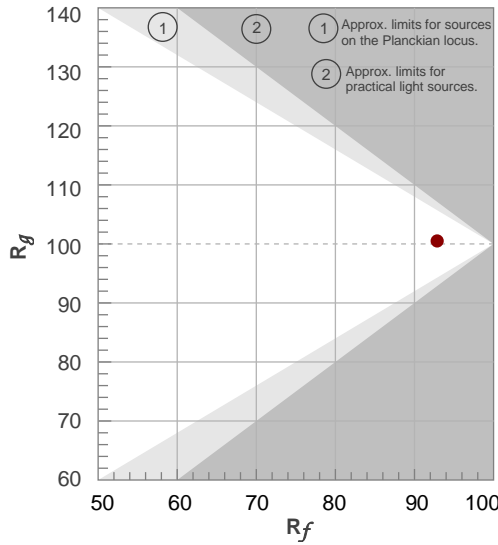
R_g 100.5
Gammut index R_g

TM30: 92.9

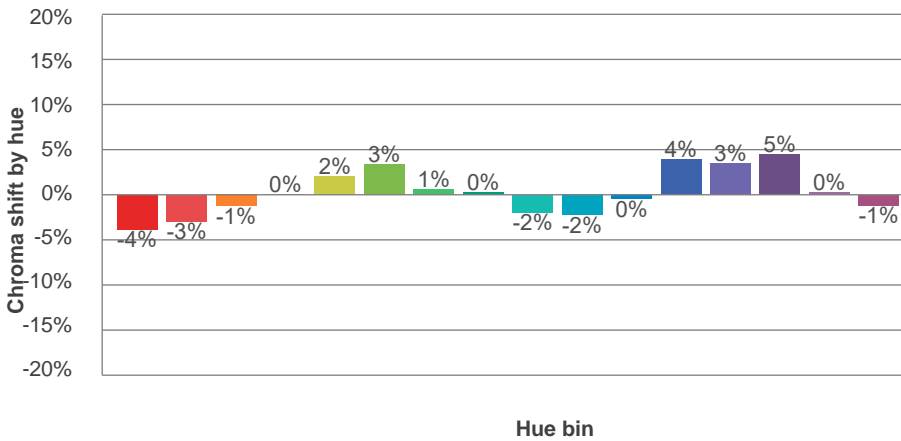
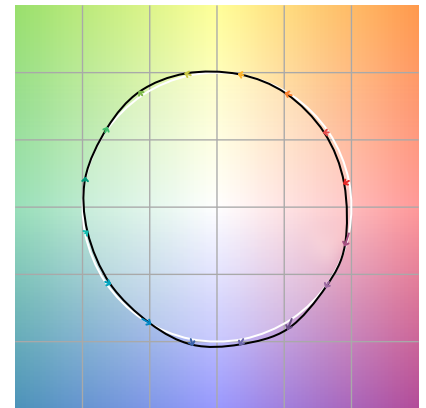
TM-30Color



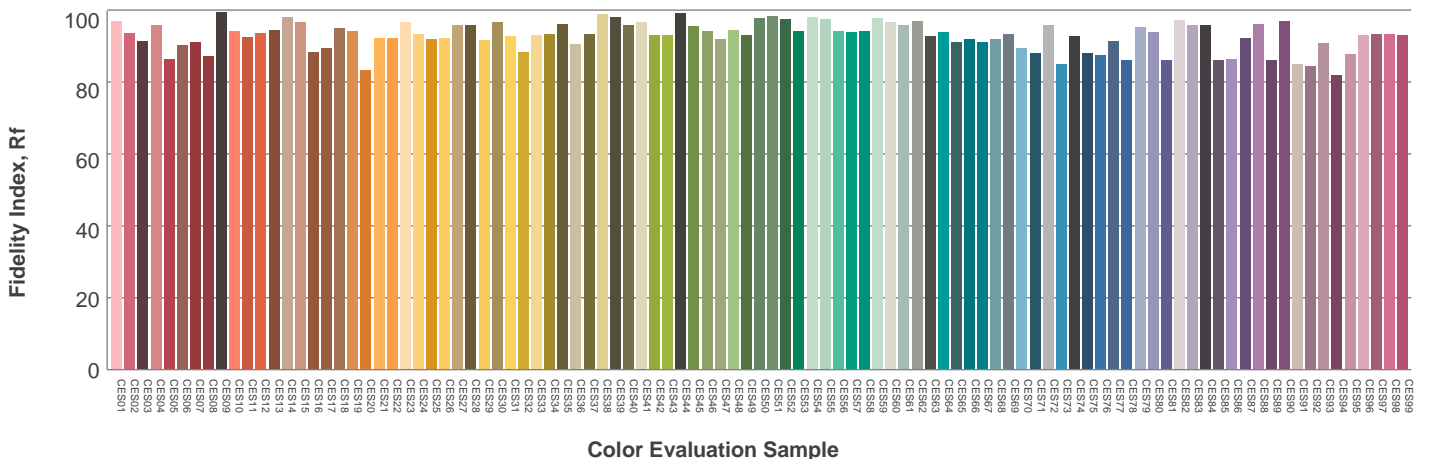
Hue Bin	R_f	Graphic shifts (%)	
		Chroma	Hue
1	93	-4%	-1%
2	94	-3%	2%
3	91	-1%	4%
4	94	0%	3%
5	95	2%	4%
6	94	3%	0%
7	94	1%	-4%
8	97	0%	-2%
9	96	-2%	-1%
10	94	-2%	3%
11	90	0%	7%
12	91	4%	2%
13	93	3%	-3%
14	90	5%	-6%
15	93	0%	-4%
16	88	-1%	-9%



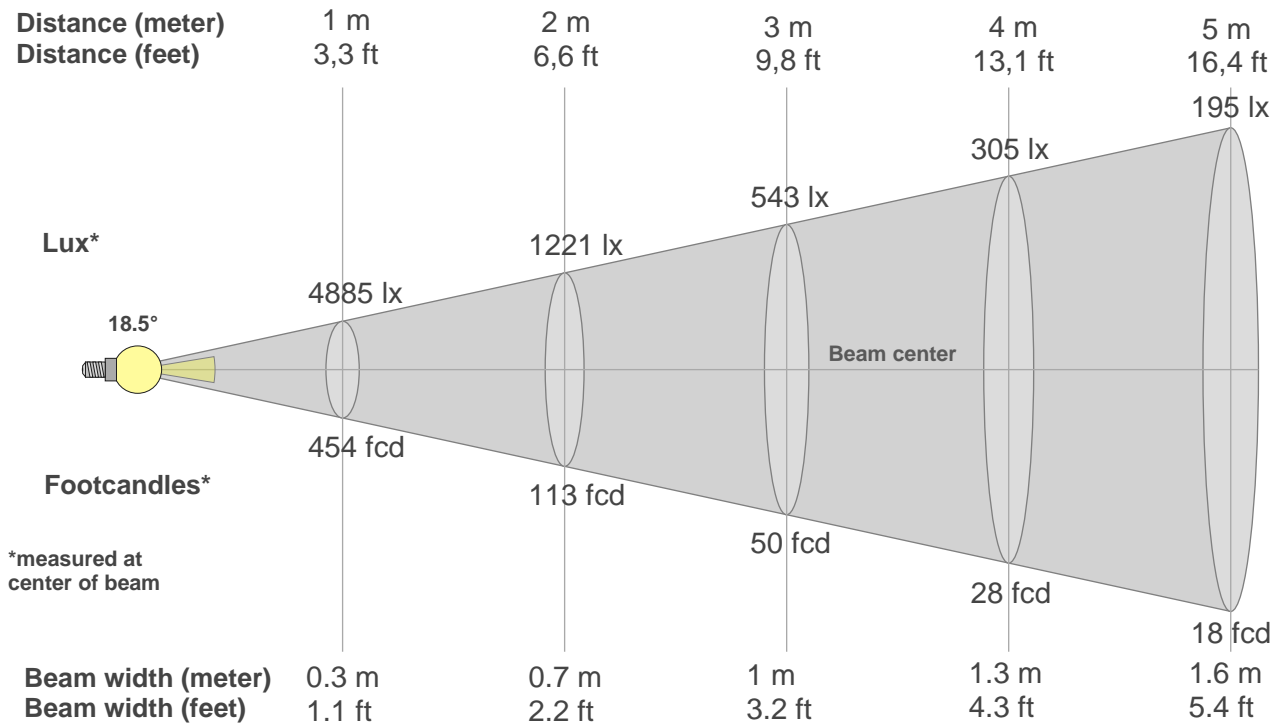
Color vector graphics



Color distortion



Beam details



Beam intensities from 1-20m

1m	2m	3m	4m	5m	6m	7m	8m	9m	10m	11m	12m	13m	14m	15m	16m	17m	18m	19m	20m
3.3ft	6.6ft	9.8ft	13.1ft	16.4ft	19.7ft	23ft	26.2ft	29.5ft	32.8ft	36.1ft	39.4ft	42.7ft	45.9ft	49.2ft	52.5ft	55.8ft	59.1ft	62.3ft	65.6ft
4885lx	1221lx	543lx	305lx	195lx	136lx	100lx	76lx	60lx	49lx	40lx	34lx	29lx	25lx	22lx	19lx	17lx	15lx	14lx	12lx
453.8fcd	113.5fcd	50.4fcd	28.4fcd	18.2fcd	12.6fcd	9.3fcd	7.1fcd	5.6fcd	4.5fcd	3.8fcd	3.2fcd	2.7fcd	2.3fcd	2fcd	1.8fcd	1.6fcd	1.4fcd	1.3fcd	1.1fcd

Intensities in 0° c-plane

0°	1°	2°	3°	4°	5°	6°	7°	8°	9°	10°	11°	12°	13°	14°	15°	16°	17°	18°	19°
4885	4904	4773	4617	4308	3999	3634	3248	2868	2501	2134	1837	1548	1301	1096	896	751	607	492	392
100%	100%	98%	95%	88%	82%	74%	66%	59%	51%	44%	38%	32%	27%	22%	18%	15%	12%	10%	8%

Intensities in 90° c-plane

0°	1°	2°	3°	4°	5°	6°	7°	8°	9°	10°	11°	12°	13°	14°	15°	16°	17°	18°	19°
4885	4809	4695	4486	4270	3945	3621	3279	2929	2588	2276	1965	1704	1452	1230	1047	864	728	592	481
100%	98%	96%	92%	87%	81%	74%	67%	60%	53%	47%	40%	35%	30%	25%	21%	18%	15%	12%	10%

Intensities in 180° c-plane

0°	1°	2°	3°	4°	5°	6°	7°	8°	9°	10°	11°	12°	13°	14°	15°	16°	17°	18°	19°
4885	4845	4746	4478	4210	3889	3538	3187	2844	2500	2207	1926	1669	1448	1228	1064	900	756	629	506
100%	99%	97%	92%	86%	80%	72%	65%	58%	51%	45%	39%	34%	30%	25%	22%	18%	15%	13%	10%

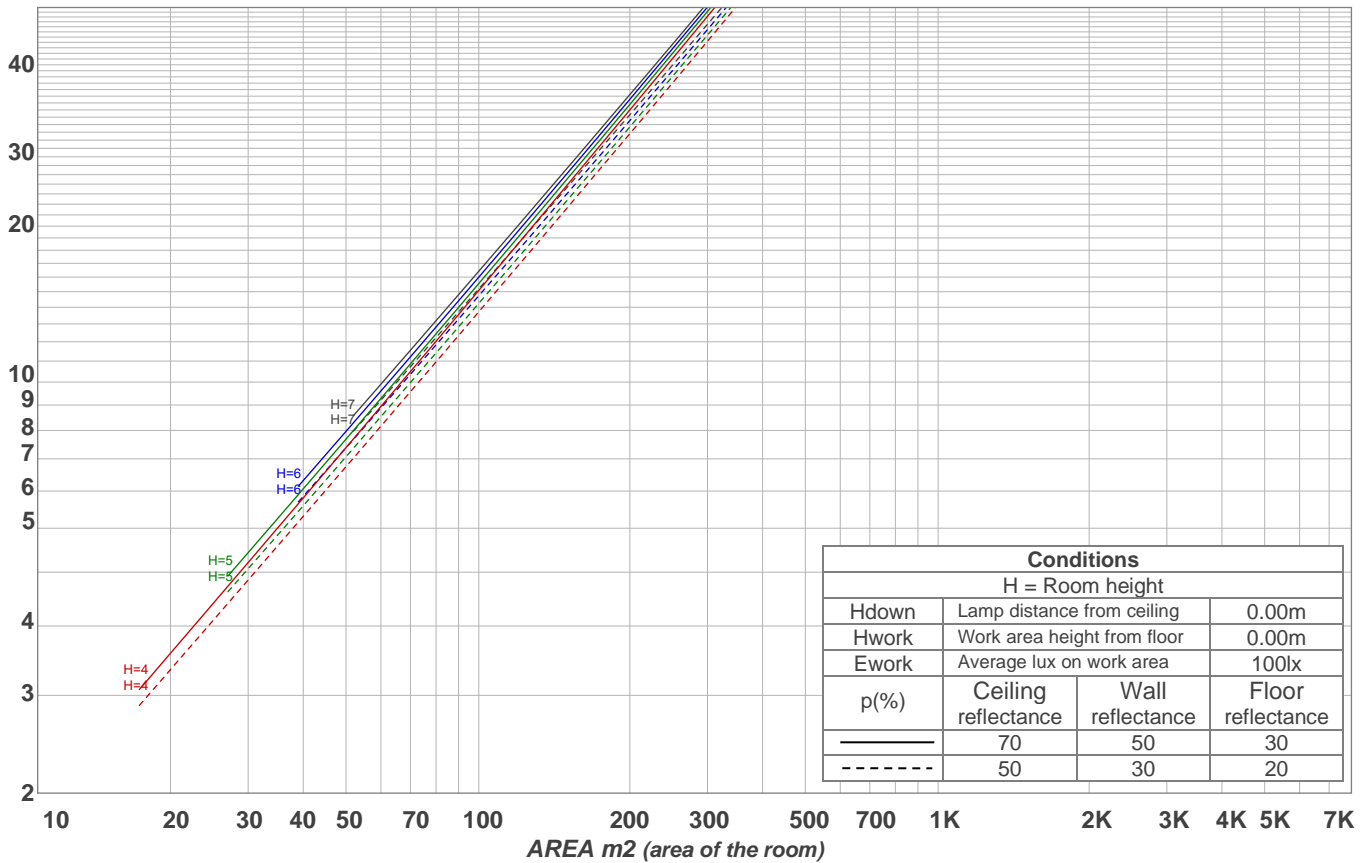
Intensities in 270° c-plane

0°	1°	2°	3°	4°	5°	6°	7°	8°	9°	10°	11°	12°	13°	14°	15°	16°	17°	18°	19°
4885	4838	4668	4497	4235	3934	3619	3270	2921	2594	2270	1973	1706	1443	1242	1042	875	726	588	481
100%	99%	96%	92%	87%	81%	74%	67%	60%	53%	46%	40%	35%	30%	25%	21%	18%	15%	12%	10%

Beam angle 50%	Field angle 10%	Cutoff angle 2,5%	Intensity ratio in 120° cone	Intensity ratio in 90° cone
18.5°	37.5°	48.4°	98.5%	97.8%

LAMPS (number of lamps)
50

Light planning Luminaire budgetary diagram



Luminaire budgetary diagram AREA m2 (area of the room) Coefficients of Utilization

Ceiling reflectance	80				70				50			30			10			0			
Wall reflectance	70	50	30	10	70	50	30	10	50	30	10	50	30	10	50	30	10	50	30	10	0
Floor reflectance	20	20	20	20	20	20	20	20	20	20	20	20	20	20	20	20	20	20	20	20	0
RCR	(RCR: Room Cavity Ratio)																				
	Room Values are expressed as percentage of Lumens delivered to the task surface																				
0	119	119	119	119	116	116	116	116	111	111	111	106	106	106	102	102	102	100	100	100	
1	115	113	111	109	113	111	109	108	107	106	104	103	102	101	100	99	98	98	97	96	
2	112	108	105	103	110	106	104	102	103	101	100	101	99	97	98	97	95	94	93	92	
3	108	104	101	98	107	103	100	97	100	98	96	98	96	94	96	94	93	92	91	90	
4	106	101	97	94	104	100	96	94	98	95	93	96	93	92	94	92	91	89	88	87	
5	103	98	94	91	102	97	93	91	95	92	90	94	91	89	92	90	88	87	86	85	
6	101	95	91	88	99	94	91	88	93	90	88	92	89	87	91	88	86	85	84	83	
7	98	92	89	86	97	92	88	86	91	88	85	90	87	85	89	86	85	84	83	82	
8	96	90	86	84	95	90	86	84	89	86	83	88	85	83	87	85	83	82	81	80	
9	94	88	85	82	93	88	84	82	87	84	82	86	84	82	86	83	81	80	79	78	
10	92	86	83	80	91	86	83	80	85	82	80	85	82	80	84	82	80	79	78	77	

Zonal Lumen Summary

0°-10°	10°-20°	20°-30°	30°-40°	40°-50°	50°-60°	60°-70°	70°-80°	80°-90°
318 lm	284 lm	54.6 lm	7.85 lm	3.56 lm	3.07 lm	3.24 lm	3.47 lm	3.28 lm
90°-100°	100°-110°	110°-120°	120°-130°	130°-140°	140°-150°	150°-160°	160°-170°	170°-180°
0.000 lm	0.000 lm	0.000 lm	0.000 lm	0.000 lm	0.000 lm	0.000 lm	0.000 lm	0.000 lm