

Light efficiency:



Output: 592 lm

Light quality:

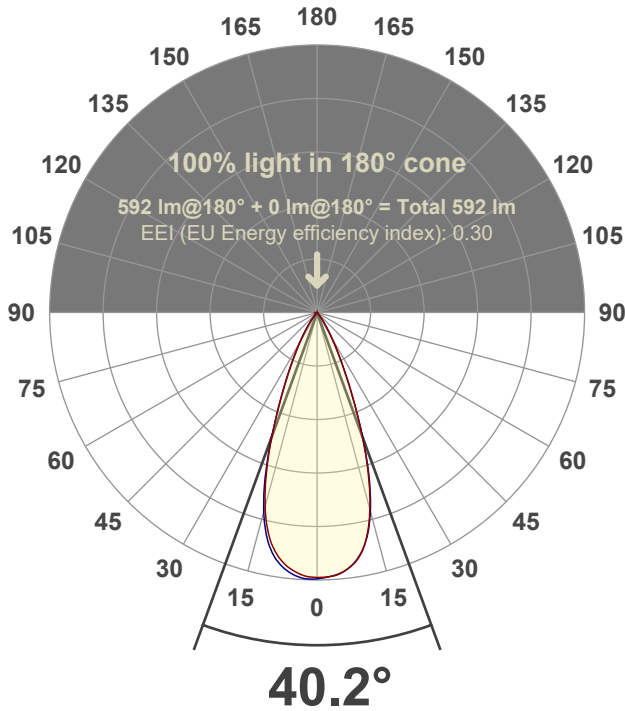


Peak: 1246 cd

Power: 15.0 W



Beam angle



Test number:

GR-F-F-A14-2722-WF-SQ-91A-Rev2

Luminaire Model:

Graffiti Flat Square Fixed Downlight-A14-2722 60° Optic- Solite

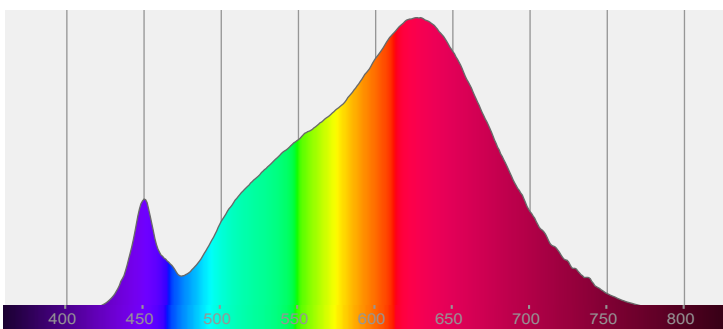
Date and time:

6/30/2022 6:25:30 PM

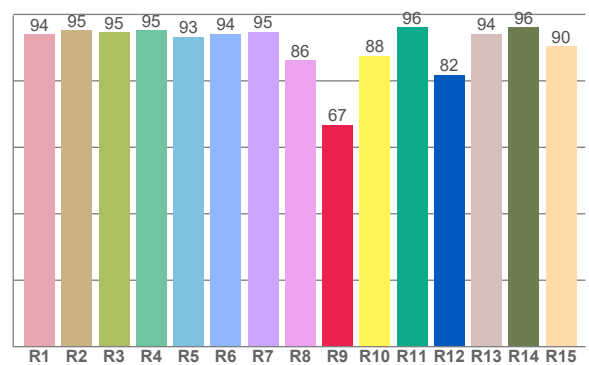
Delivered Lumens

592

Spectra



CRI: 93.4 (R1-R8)



Color parameters

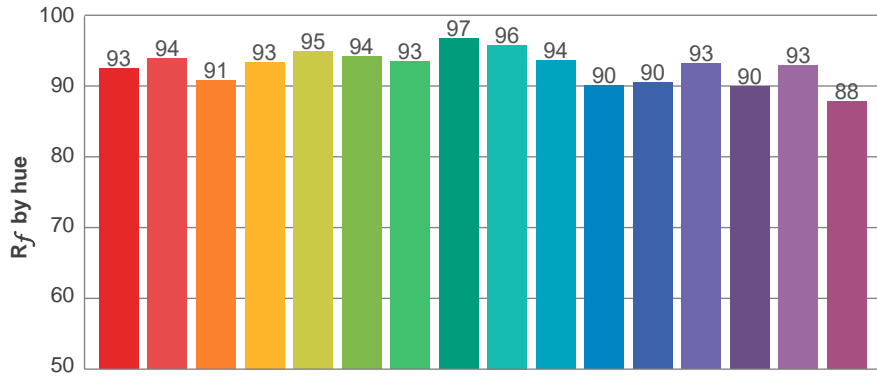
	Color rendering index	Red component	Color fidelity	Color gamut	Color quality scale	Color coordinate cie 1931	Color coordinate cie 1931	Color coordinate	Color coordinate	Color deviation from black body
	CRI	CRI R9	TM30 R _f	TM30 R _g	CQS	x	y	u	v	Δuv
	93.4	66.8	92.7	100.7	91.4	0.457	0.414	0.259	0.352	0.0015

R_f 92.7
Fidelity index R_f

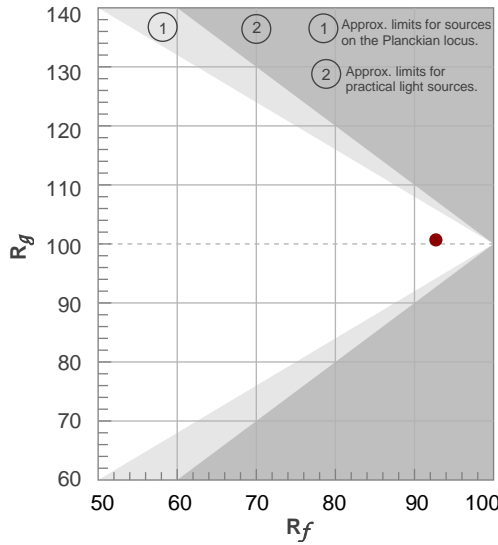
R_g 100.7
Gammut index R_g

TM30: 92.7

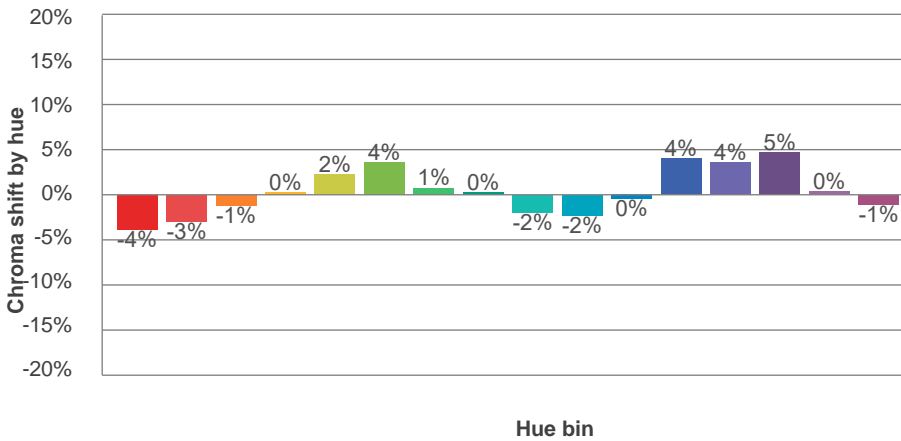
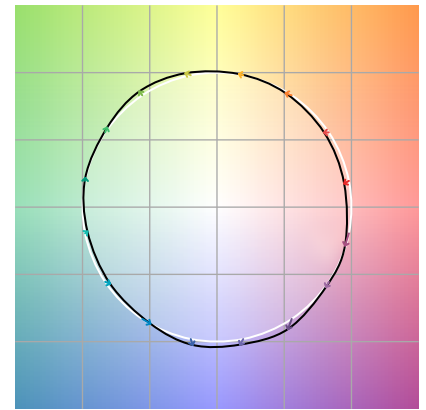
TM-30Color



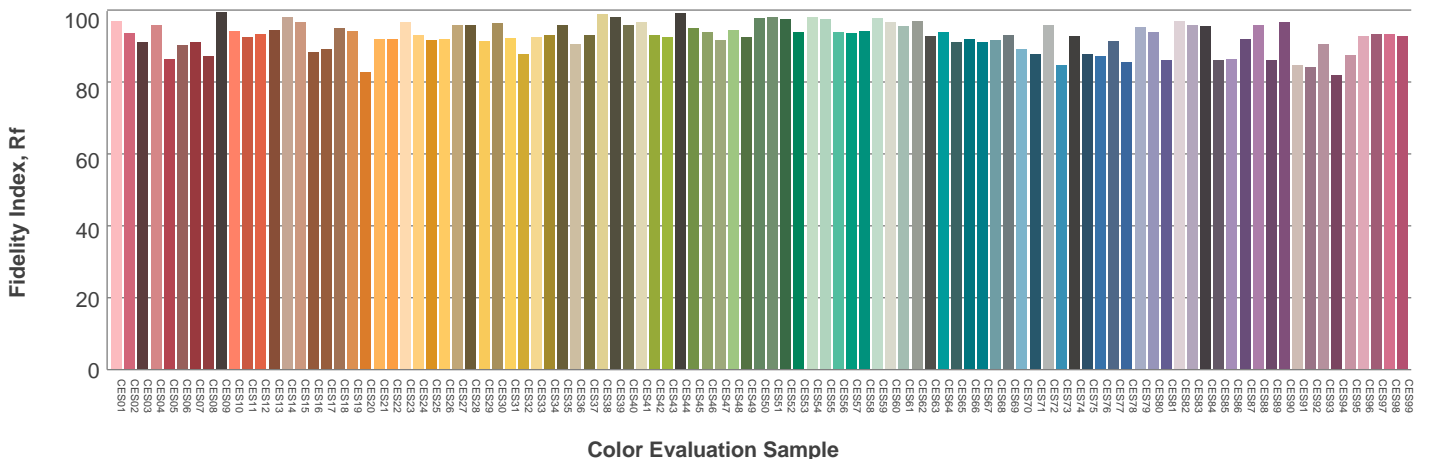
Hue Bin	R_f	Graphic shifts (%)	
		Chroma	Hue
1	93	-4%	-1%
2	94	-3%	2%
3	91	-1%	5%
4	93	0%	3%
5	95	2%	4%
6	94	4%	0%
7	93	1%	-4%
8	97	0%	-2%
9	96	-2%	-1%
10	94	-2%	3%
11	90	0%	7%
12	90	4%	2%
13	93	4%	-3%
14	90	5%	-6%
15	93	0%	-4%
16	88	-1%	-9%



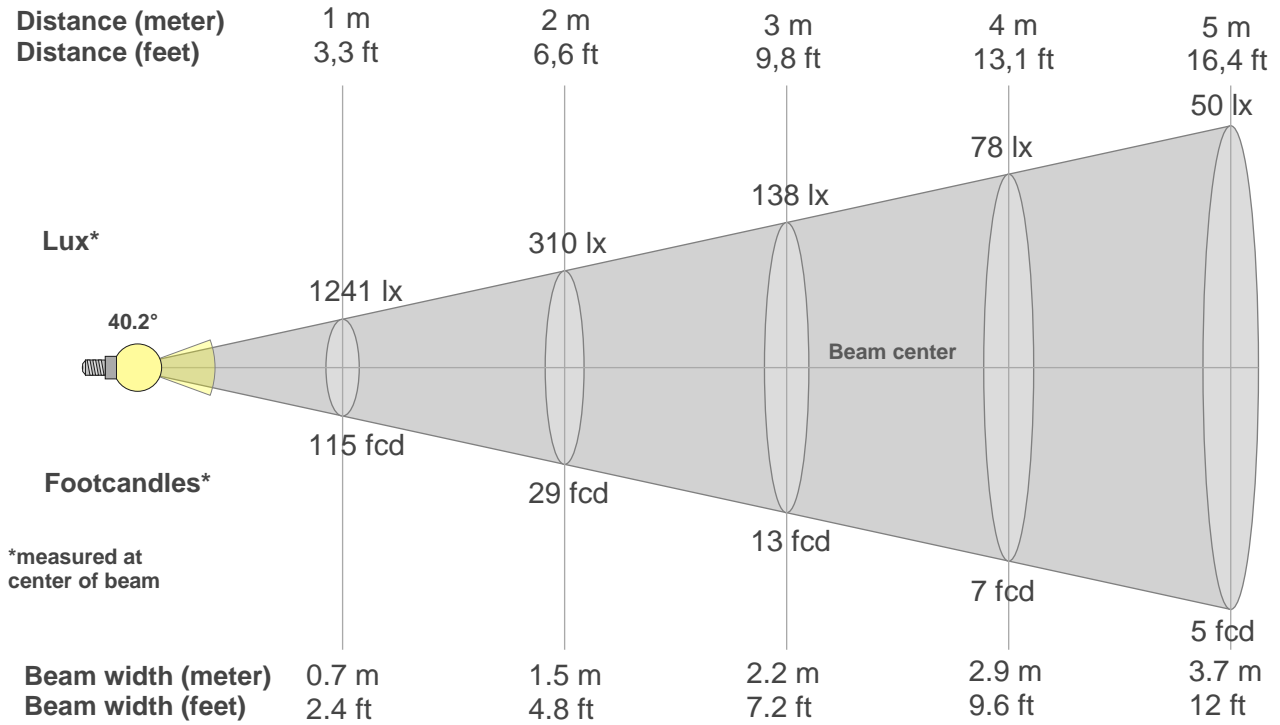
Color vector graphics



Color distortion



Beam details



Beam intensities from 1-20m

1m	2m	3m	4m	5m	6m	7m	8m	9m	10m	11m	12m	13m	14m	15m	16m	17m	18m	19m	20m
3.3ft	6.6ft	9.8ft	13.1ft	16.4ft	19.7ft	23ft	26.2ft	29.5ft	32.8ft	36.1ft	39.4ft	42.7ft	45.9ft	49.2ft	52.5ft	55.8ft	59.1ft	62.3ft	65.6ft
1241lx	310lx	138lx	78lx	50lx	34lx	25lx	19lx	15lx	12lx	10lx	9lx	7lx	6lx	6lx	5lx	4lx	4lx	3lx	3lx
115.3fcd	28.8fcd	12.8fcd	7.2fcd	4.6fcd	3.2fcd	2.4fcd	1.8fcd	1.4fcd	1.2fcd	1fcd	0.8fcd	0.7fcd	0.6fcd	0.5fcd	0.5fcd	0.4fcd	0.4fcd	0.3fcd	0.3fcd

Intensities in 0° c-plane

0°	2°	4°	6°	8°	10°	12°	14°	16°	18°	20°	22°	24°	26°	28°	30°	32°	34°	36°	38°
1241	1237	1231	1214	1189	1151	1091	1006	897	766	625	491	373	277	203	144	102	72	49	34
100%	100%	99%	98%	96%	93%	88%	81%	72%	62%	50%	40%	30%	22%	16%	12%	8%	6%	4%	3%

Intensities in 90° c-plane

0°	2°	4°	6°	8°	10°	12°	14°	16°	18°	20°	22°	24°	26°	28°	30°	32°	34°	36°	38°
1241	1238	1229	1215	1188	1148	1090	1010	905	777	631	487	365	270	200	146	105	74	50	33
100%	100%	99%	98%	96%	93%	88%	81%	73%	63%	51%	39%	29%	22%	16%	12%	8%	6%	4%	3%

Intensities in 180° c-plane

0°	2°	4°	6°	8°	10°	12°	14°	16°	18°	20°	22°	24°	26°	28°	30°	32°	34°	36°	38°
1241	1234	1222	1202	1173	1131	1073	991	883	759	625	498	389	300	229	173	129	95	68	47
100%	99%	98%	97%	95%	91%	86%	80%	71%	61%	50%	40%	31%	24%	18%	14%	10%	8%	5%	4%

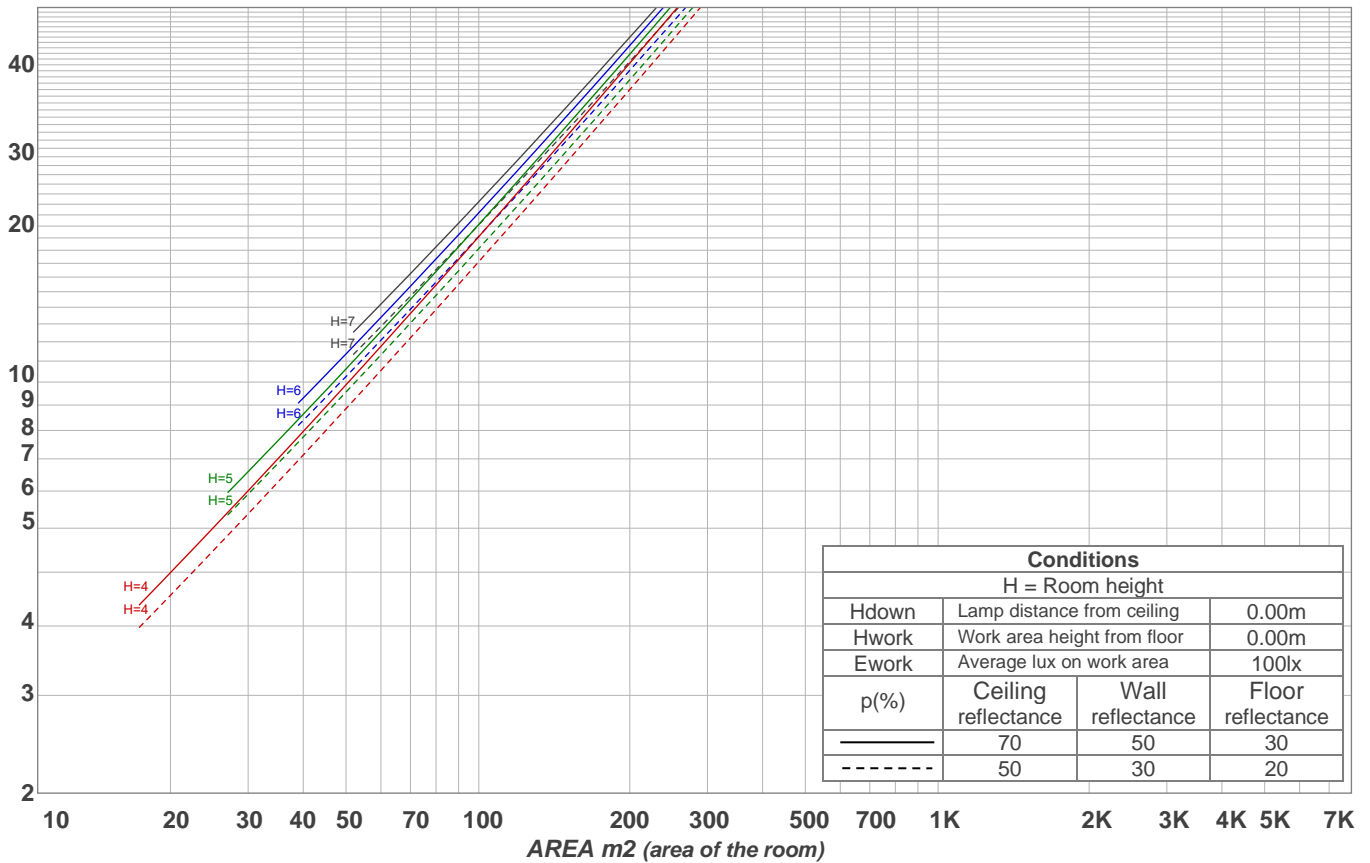
Intensities in 270° c-plane

0°	2°	4°	6°	8°	10°	12°	14°	16°	18°	20°	22°	24°	26°	28°	30°	32°	34°	36°	38°
1241	1245	1237	1221	1195	1157	1097	1013	904	773	630	491	374	289	220	166	124	90	62	42
100%	100%	100%	98%	96%	93%	88%	82%	73%	62%	51%	40%	30%	23%	18%	13%	10%	7%	5%	3%

Beam angle 50%	Field angle 10%	Cutoff angle 2,5%	Intensity ratio in 120° cone	Intensity ratio in 90° cone
40.2°	63.1°	78.3°	98.4%	97.4%

LAMPS (number of lamps)
50

**Light planning
Luminaire budgetary diagram**



**Luminaire budgetary diagram
AREA m2 (area of the room)
Coefficients of Utilization**

Ceiling reflectance	80				70				50			30			10			0			
Wall reflectance	70	50	30	10	70	50	30	10	50	30	10	50	30	10	50	30	10	50	30	10	0
Floor reflectance	20	20	20	20	20	20	20	20	20	20	20	20	20	20	20	20	20	20	20	20	0
RCR	(RCR: Room Cavity Ratio)																				
	Room Values are expressed as percentage of Lumens delivered to the task surface																				
0	119	119	119	119	116	116	116	116	111	111	111	106	106	106	102	102	102	100	100	100	
1	114	112	109	107	112	109	107	106	105	104	102	102	100	99	98	97	96	95	95	95	
2	109	105	102	99	107	103	100	97	100	98	95	97	95	93	95	93	91	90	90	90	
3	105	99	95	92	103	98	94	91	96	92	90	93	91	88	91	89	87	85	85	85	
4	101	94	90	86	99	93	89	86	91	88	85	89	86	84	88	85	83	81	81	81	
5	97	90	85	81	95	89	84	81	87	83	80	86	82	80	84	81	79	78	78	78	
6	93	86	81	77	92	85	80	77	84	80	76	82	79	76	81	78	75	74	74	74	
7	90	82	77	73	89	81	77	73	80	76	73	79	75	73	78	75	72	71	71	71	
8	87	79	74	70	85	78	73	70	77	73	70	76	72	69	75	72	69	68	68	68	
9	83	75	70	67	82	75	70	67	74	70	67	73	69	67	73	69	66	65	65	65	
10	81	72	68	64	80	72	67	64	71	67	64	71	67	64	70	66	64	63	63	63	

Zonal Lumen Summary

0°-10°	10°-20°	20°-30°	30°-40°	40°-50°	50°-60°	60°-70°	70°-80°	80°-90°
114 lm	256 lm	154 lm	46.2 lm	8.79 lm	3.02 lm	3.50 lm	3.25 lm	2.60 lm
90°-100°	100°-110°	110°-120°	120°-130°	130°-140°	140°-150°	150°-160°	160°-170°	170°-180°
0.000 lm	0.000 lm	0.000 lm	0.000 lm	0.000 lm	0.000 lm	0.000 lm	0.000 lm	0.000 lm