

Light efficiency:



Output: 614 lm

Light quality:

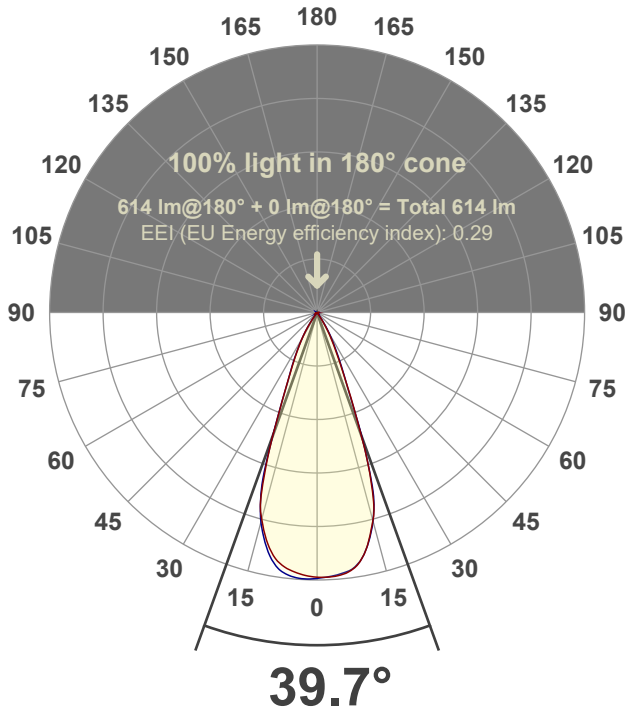


Peak: 1379 cd

Power: 15.0 W



Beam angle



Test number:

GR-F-F-A14-2722-WF-SQ-Rev2

Luminaire Model:

Graffiti Flat Square Fixed Downlight-A14-2722 60° Optic

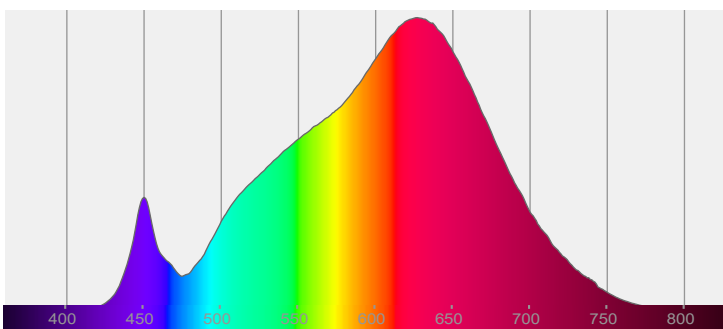
Date and time:

6/30/2022 6:22:54 PM

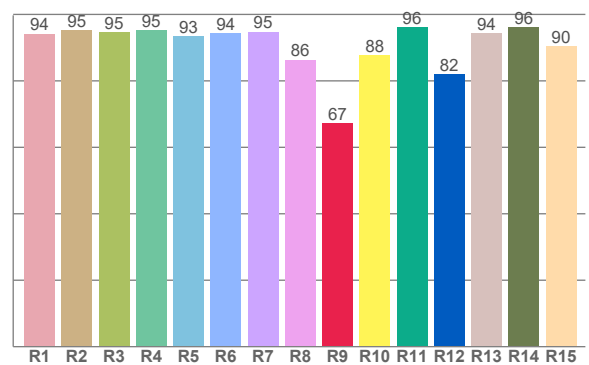
Delivered Lumens

614

Spectra



CRI: 93.5 (R1-R8)



Color parameters

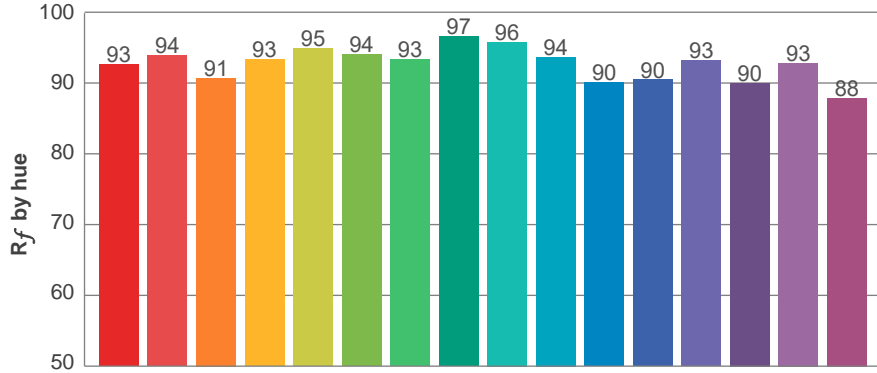
	Color rendering index	Red component	Color fidelity	Color gamut	Color quality scale	Color coordinate cie 1931	Color coordinate cie 1931	Color coordinate	Color coordinate	Color deviation from black body
	CRI	CRI R9	TM30 R _f	TM30 R _g	CQS	x	y	u	v	Δuv
	93.5	67.2	92.7	100.8	91.4	0.457	0.413	0.259	0.352	0.0013

R_f 92.7
Fidelity index R_f

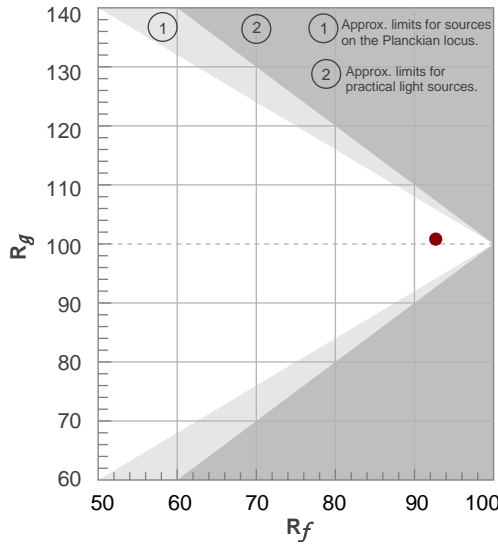
R_g 100.8
Gammut index R_g

TM30: 92.7

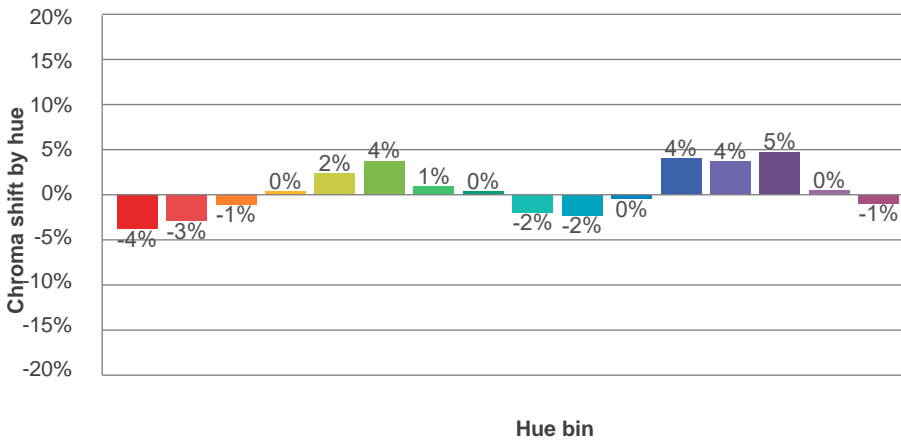
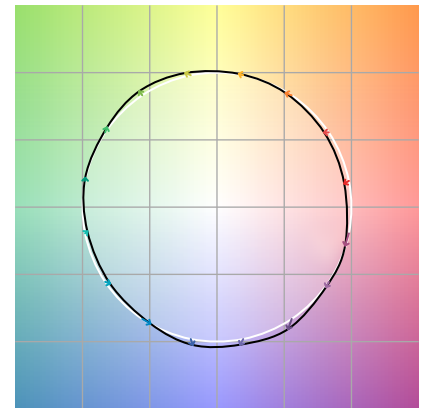
TM-30Color



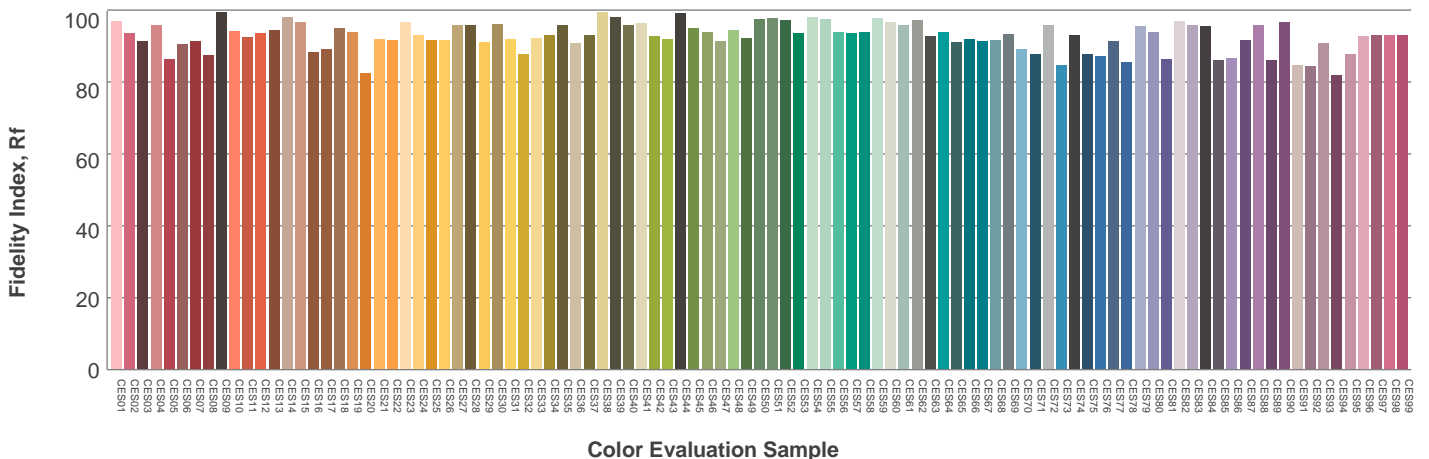
Hue Bin	R_f	Graphic shifts (%)	
		Chroma	Hue
1	93	-4%	-1%
2	94	-3%	2%
3	91	-1%	5%
4	93	0%	3%
5	95	2%	4%
6	94	4%	0%
7	93	1%	-4%
8	97	0%	-2%
9	96	-2%	-1%
10	94	-2%	3%
11	90	0%	7%
12	90	4%	2%
13	93	4%	-3%
14	90	5%	-6%
15	93	0%	-4%
16	88	-1%	-9%



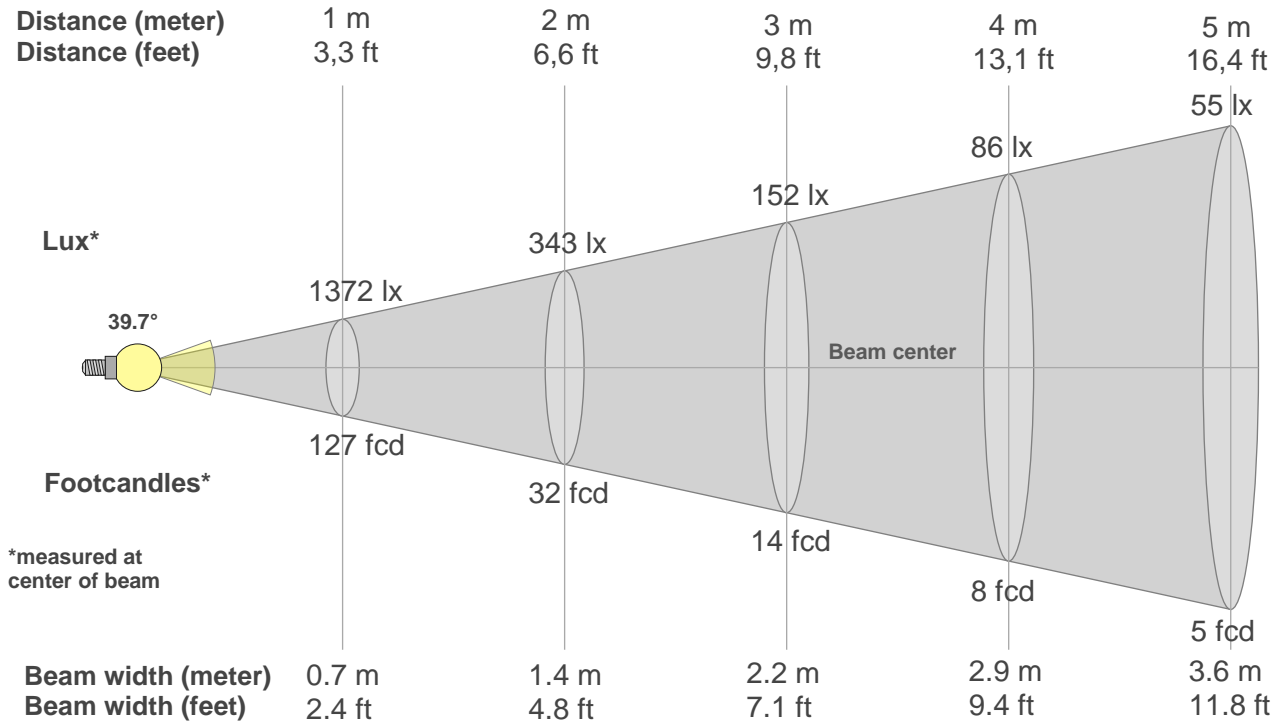
Color vector graphics



Color distortion



Beam details



Beam intensities from 1-20m

1m	2m	3m	4m	5m	6m	7m	8m	9m	10m	11m	12m	13m	14m	15m	16m	17m	18m	19m	20m
3.3ft	6.6ft	9.8ft	13.1ft	16.4ft	19.7ft	23ft	26.2ft	29.5ft	32.8ft	36.1ft	39.4ft	42.7ft	45.9ft	49.2ft	52.5ft	55.8ft	59.1ft	62.3ft	65.6ft
1372lx	343lx	152lx	86lx	55lx	38lx	28lx	21lx	17lx	14lx	11lx	10lx	8lx	7lx	6lx	5lx	5lx	4lx	4lx	3lx
127.5fcd	31.9fcd	14.2fcd	8fcd	5.1fcd	3.5fcd	2.6fcd	2fcd	1.6fcd	1.3fcd	1.1fcd	0.9fcd	0.8fcd	0.7fcd	0.6fcd	0.5fcd	0.4fcd	0.4fcd	0.4fcd	0.3fcd

Intensities in 0° c-plane

0°	2°	4°	6°	8°	10°	12°	14°	16°	18°	20°	22°	24°	26°	28°	30°	32°	34°	36°	38°
1372	1370	1367	1357	1337	1300	1240	1158	1062	888	667	461	317	227	169	123	82	48	24	13
100%	100%	100%	99%	97%	95%	90%	84%	77%	65%	49%	34%	23%	17%	12%	9%	6%	3%	2%	1%

Intensities in 90° c-plane

0°	2°	4°	6°	8°	10°	12°	14°	16°	18°	20°	22°	24°	26°	28°	30°	32°	34°	36°	38°
1372	1369	1362	1352	1337	1299	1239	1160	1057	902	669	442	330	249	187	138	96	57	31	16
100%	100%	99%	99%	97%	95%	90%	85%	77%	66%	49%	32%	24%	18%	14%	10%	7%	4%	2%	1%

Intensities in 180° c-plane

0°	2°	4°	6°	8°	10°	12°	14°	16°	18°	20°	22°	24°	26°	28°	30°	32°	34°	36°	38°
1372	1363	1353	1338	1316	1281	1225	1149	1053	884	668	471	347	271	213	164	119	78	45	26
100%	99%	99%	98%	96%	93%	89%	84%	77%	64%	49%	34%	25%	20%	16%	12%	9%	6%	3%	2%

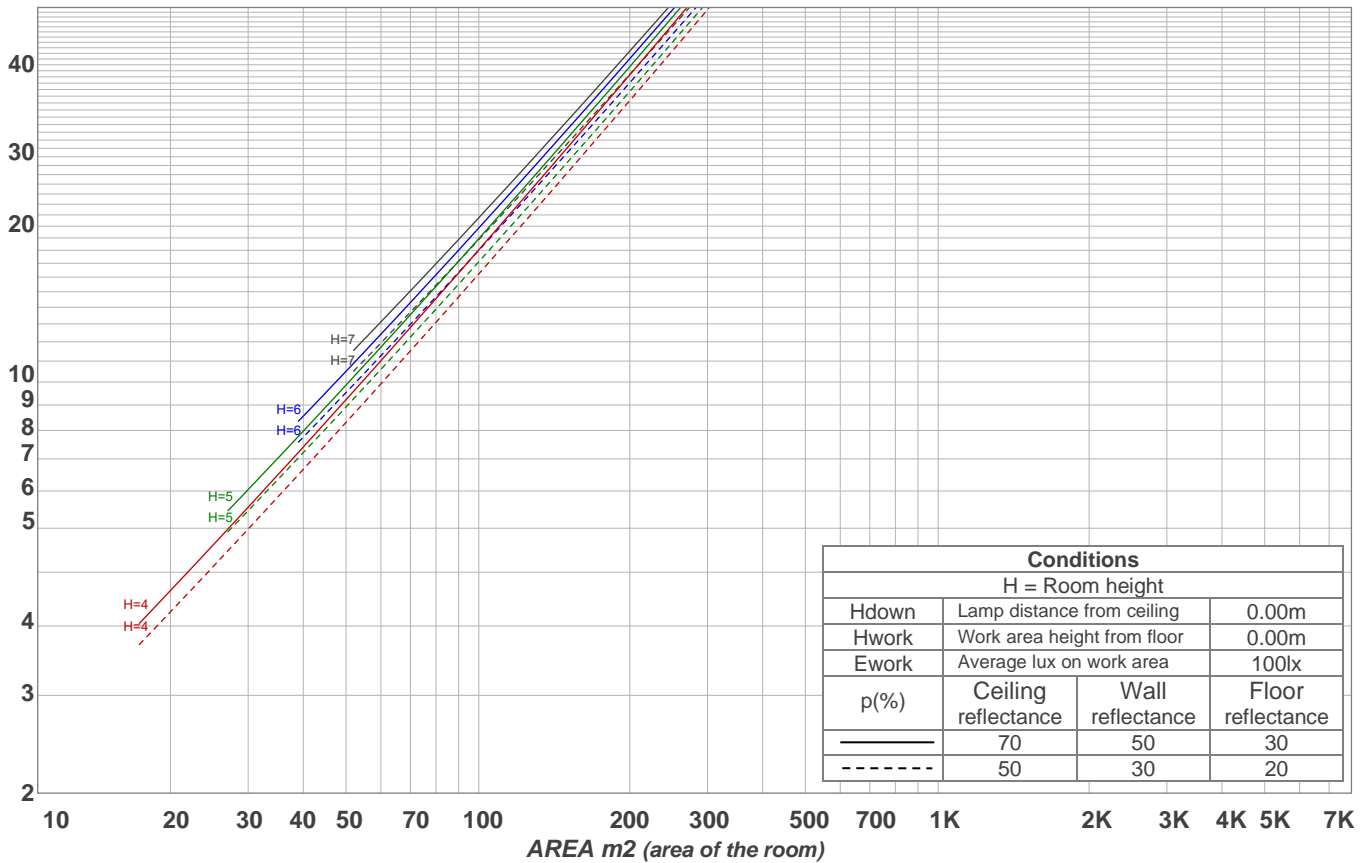
Intensities in 270° c-plane

0°	2°	4°	6°	8°	10°	12°	14°	16°	18°	20°	22°	24°	26°	28°	30°	32°	34°	36°	38°
1372	1379	1378	1368	1347	1307	1246	1166	1064	913	666	474	354	279	214	159	118	76	45	24
100%	101%	100%	100%	98%	95%	91%	85%	78%	67%	49%	35%	26%	20%	16%	12%	9%	6%	3%	2%

Beam angle 50%	Field angle 10%	Cutoff angle 2,5%	Intensity ratio in 120° cone	Intensity ratio in 90° cone
39.7°	60.8°	72.3°	98.8%	98.5%

LAMPS (number of lamps)
50

Light planning Luminaire budgetary diagram



Luminaire budgetary diagram AREA m2 (area of the room) Coefficients of Utilization

Ceiling reflectance	80				70				50			30			10			0			
Wall reflectance	70	50	30	10	70	50	30	10	50	30	10	50	30	10	50	30	10	50	30	10	0
Floor reflectance	20	20	20	20	20	20	20	20	20	20	20	20	20	20	20	20	20	20	20	20	0
RCR	(RCR: Room Cavity Ratio)																				
	Room Values are expressed as percentage of Lumens delivered to the task surface																				
0	119	119	119	119	116	116	116	116	111	111	111	106	106	106	102	102	102	100	100	100	100
1	114	112	110	108	112	110	108	106	106	104	103	102	101	100	99	98	97	95	95	95	95
2	110	106	102	100	108	104	101	99	101	99	96	98	96	94	95	94	92	91	91	91	91
3	106	101	96	93	104	99	95	92	97	94	91	94	92	90	92	90	88	87	87	87	87
4	102	96	91	88	100	95	91	87	93	89	86	91	88	85	89	87	85	83	83	83	83
5	98	92	87	83	97	91	86	83	89	85	82	87	84	82	86	83	81	80	80	80	80
6	95	88	83	80	94	87	83	79	86	82	79	84	81	78	83	80	78	77	77	77	77
7	92	84	79	76	90	84	79	76	82	78	75	81	78	75	80	77	75	74	74	74	74
8	88	81	76	73	87	80	76	73	79	75	72	78	75	72	78	74	72	71	71	71	71
9	85	78	73	70	85	77	73	70	77	72	70	76	72	69	75	72	69	68	68	68	68
10	83	75	70	67	82	75	70	67	74	70	67	73	69	67	73	69	67	66	66	66	66

Zonal Lumen Summary

0°-10°	10°-20°	20°-30°	30°-40°	40°-50°	50°-60°	60°-70°	70°-80°	80°-90°
128 lm	295 lm	144 lm	35.5 lm	2.58 lm	1.35 lm	2.27 lm	2.27 lm	2.53 lm
90°-100°	100°-110°	110°-120°	120°-130°	130°-140°	140°-150°	150°-160°	160°-170°	170°-180°
0.000 lm	0.000 lm	0.000 lm	0.000 lm	0.000 lm	0.000 lm	0.000 lm	0.000 lm	0.000 lm