

Light efficiency:



Output: 610 lm

Light quality:

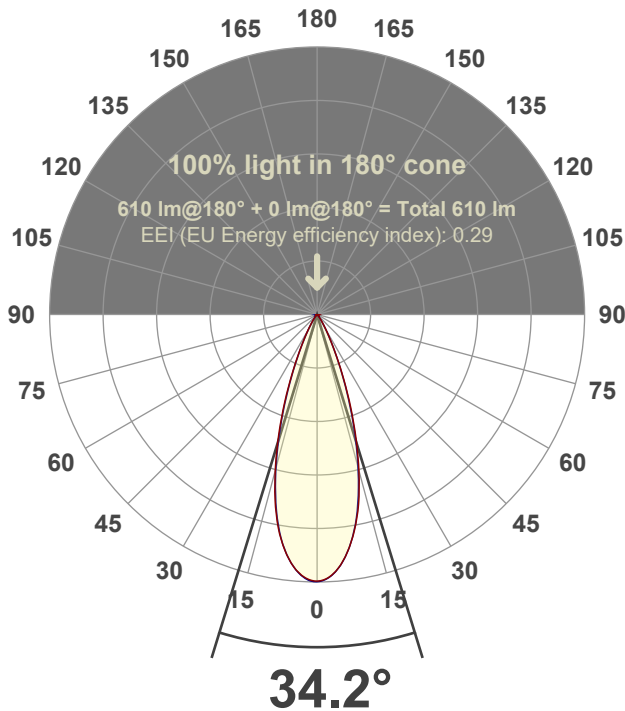


Peak: 1639 cd

Power: 14.6 W



Beam angle



Test number:

GR-F-F-A14-3019-FL-RD-91A-Rev2

Luminaire Model:

Graffiti Flat Round Fixed Downlight-A14-3019 38° Optic-Solite

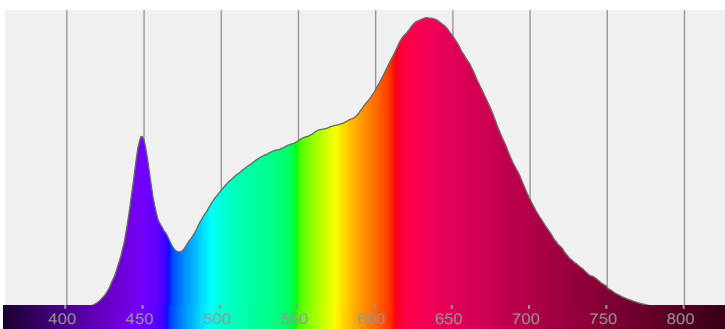
Date and time:

3/24/2022 9:43:31 PM

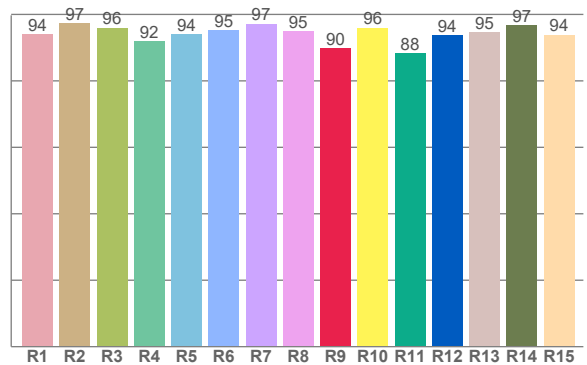
Delivered Lumens

610

Spectra



CRI: 95.1 (R1-R8)



Color parameters

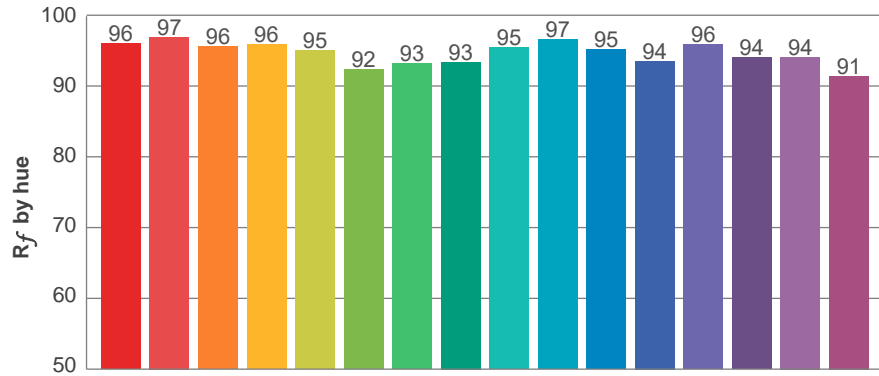
	Color rendering index	Red component	Color fidelity	Color gamut	Color quality scale	Color coordinate cie 1931	Color coordinate cie 1931	Color coordinate	Color coordinate	Color deviation from black body
	CRI	CRI R9	TM30 R _f	TM30 R _g	CQS	x	y	u	v	Δuv
	95.1	89.9	94.9	105.4	95.1	0.423	0.388	0.248	0.342	-0.0044

R_f 94.9
Fidelity index R_f

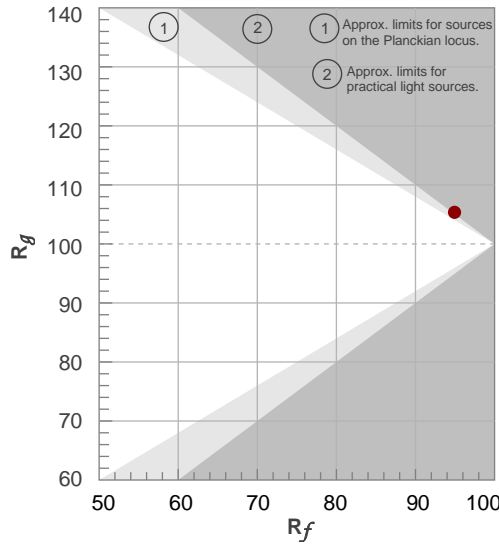
R_g 105.4
Gammut index R_g

TM30: 94.9

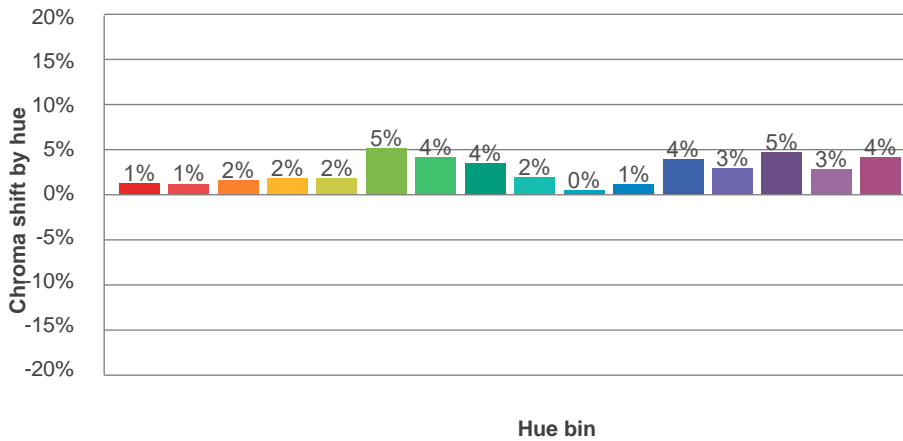
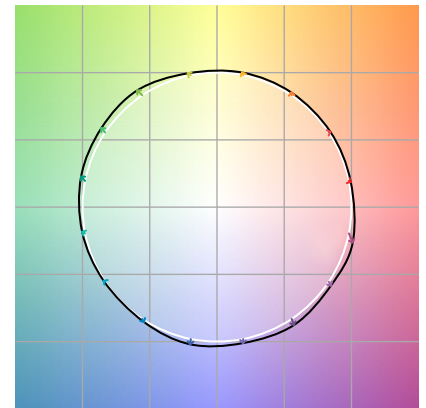
TM-30Color



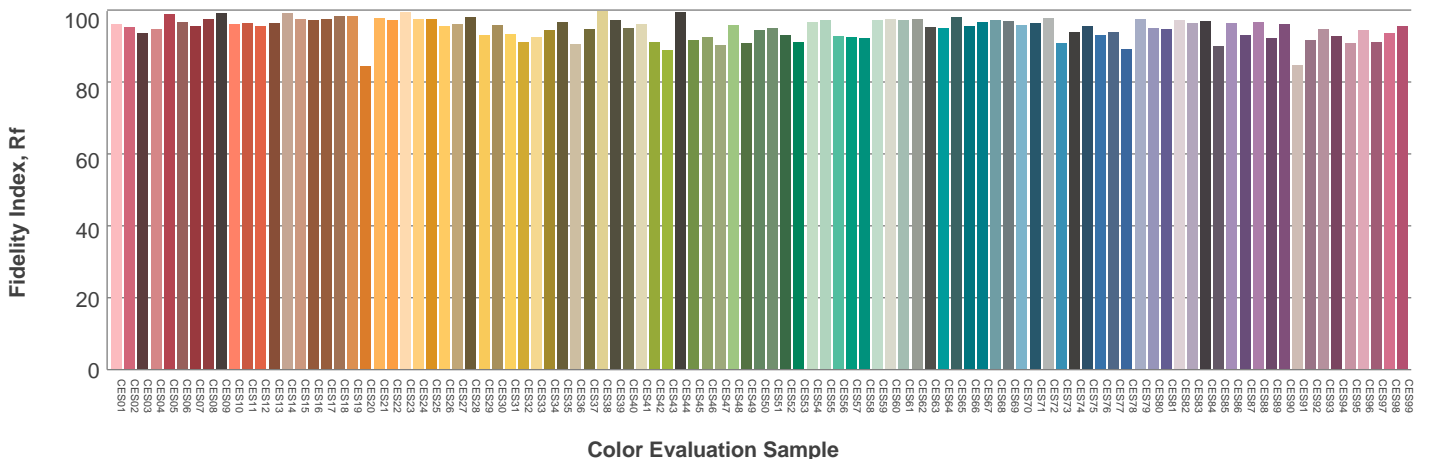
Hue Bin	R_f	Graphic shifts (%)	
		Chroma	Hue
1	96	1%	-1%
2	97	1%	0%
3	96	2%	1%
4	96	2%	1%
5	95	2%	2%
6	92	5%	1%
7	93	4%	-1%
8	93	4%	-3%
9	95	2%	-2%
10	97	0%	-1%
11	95	1%	2%
12	94	4%	0%
13	96	3%	-1%
14	94	5%	-1%
15	94	3%	-1%
16	91	4%	-6%



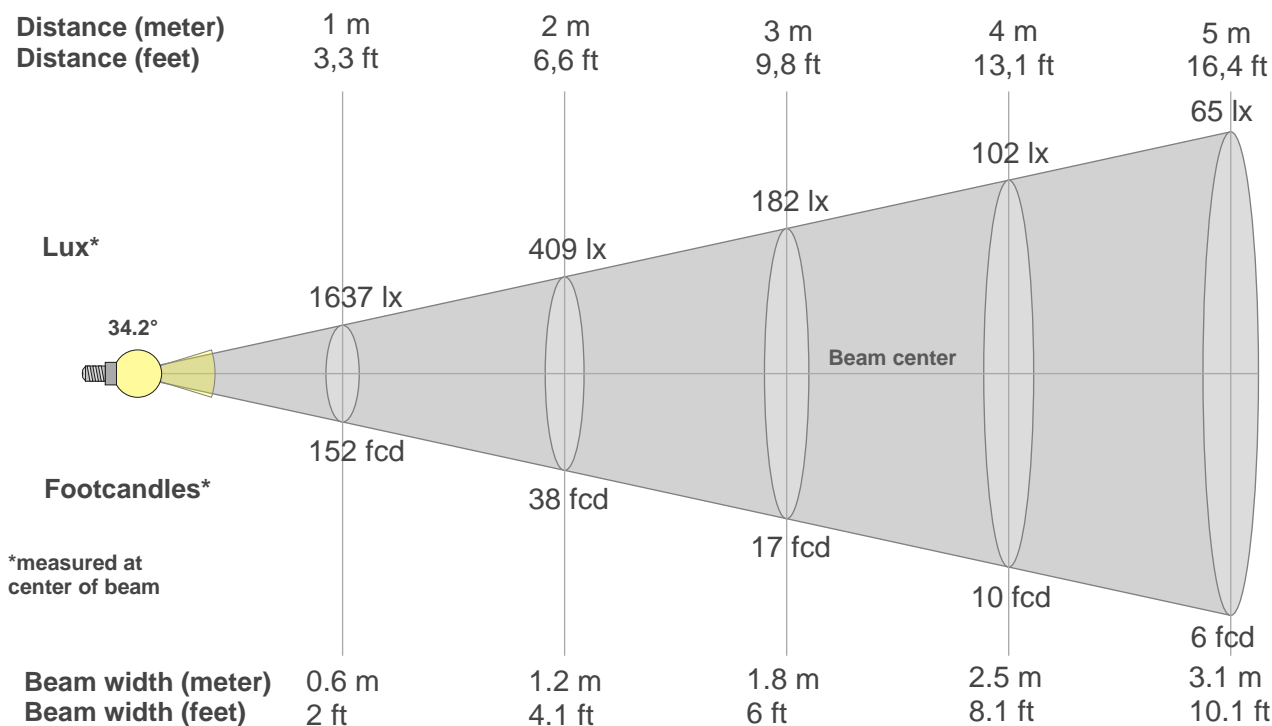
Color vector graphics



Color distortion



Beam details



Beam intensities from 1-20m

1m	2m	3m	4m	5m	6m	7m	8m	9m	10m	11m	12m	13m	14m	15m	16m	17m	18m	19m	20m
3.3ft	6.6ft	9.8ft	13.1ft	16.4ft	19.7ft	23ft	26.2ft	29.5ft	32.8ft	36.1ft	39.4ft	42.7ft	45.9ft	49.2ft	52.5ft	55.8ft	59.1ft	62.3ft	65.6ft
1637lx	409lx	182lx	102lx	65lx	45lx	33lx	26lx	20lx	16lx	14lx	11lx	10lx	8lx	7lx	6lx	6lx	5lx	5lx	4lx
152.1fcd	38fcd	16.9fcd	9.5fcd	6.1fcd	4.2fcd	3.1fcd	2.4fcd	1.9fcd	1.5fcd	1.3fcd	1.1fcd	0.9fcd	0.8fcd	0.7fcd	0.6fcd	0.5fcd	0.5fcd	0.4fcd	0.4fcd

Intensities in 0° c-plane

0°	2°	4°	6°	8°	10°	12°	14°	16°	18°	20°	22°	24°	26°	28°	30°	32°	34°	36°	38°
1637	1623	1582	1520	1437	1337	1215	1070	916	759	605	465	346	249	176	125	91	66	48	35
100%	99%	97%	93%	88%	82%	74%	65%	56%	46%	37%	28%	21%	15%	11%	8%	6%	4%	3%	2%

Intensities in 90° c-plane

0°	2°	4°	6°	8°	10°	12°	14°	16°	18°	20°	22°	24°	26°	28°	30°	32°	34°	36°	38°
1637	1622	1584	1524	1436	1328	1199	1052	896	738	589	453	334	238	170	119	83	59	42	30
100%	99%	97%	93%	88%	81%	73%	64%	55%	45%	36%	28%	20%	15%	10%	7%	5%	4%	3%	2%

Intensities in 180° c-plane

0°	2°	4°	6°	8°	10°	12°	14°	16°	18°	20°	22°	24°	26°	28°	30°	32°	34°	36°	38°
1637	1623	1588	1531	1452	1350	1222	1075	917	757	603	463	343	246	173	126	91	66	48	36
100%	99%	97%	94%	89%	82%	75%	66%	56%	46%	37%	28%	21%	15%	11%	8%	6%	4%	3%	2%

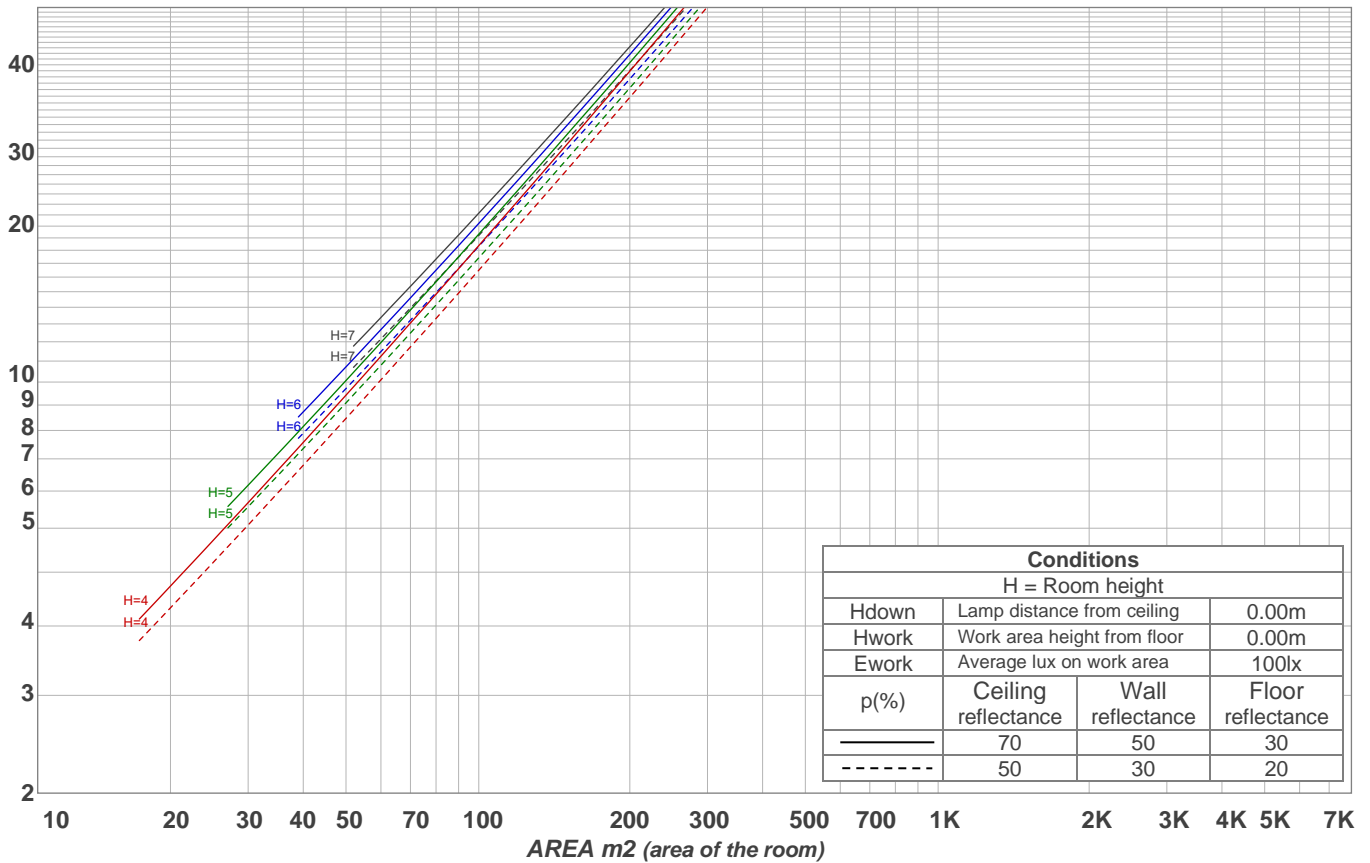
Intensities in 270° c-plane

0°	2°	4°	6°	8°	10°	12°	14°	16°	18°	20°	22°	24°	26°	28°	30°	32°	34°	36°	38°
1637	1630	1594	1531	1447	1341	1211	1060	898	738	584	443	326	237	169	119	84	61	44	31
100%	100%	97%	93%	88%	82%	74%	65%	55%	45%	36%	27%	20%	14%	10%	7%	5%	4%	3%	2%

Beam angle 50%	Field angle 10%	Cutoff angle 2,5%	Intensity ratio in 120° cone	Intensity ratio in 90° cone
34.2°	56.6°	73.4°	97.9%	96.3%

LAMPS (number of lamps)
50

Light planning Luminaire budgetary diagram



Luminaire budgetary diagram AREA m2 (area of the room) Coefficients of Utilization

Ceiling reflectance	80				70				50			30			10			0
Wall reflectance	70	50	30	10	70	50	30	10	50	30	10	50	30	10	50	30	10	0
Floor reflectance	20	20	20	20	20	20	20	20	20	20	20	20	20	20	20	20	20	0
RCR	(RCR: Room Cavity Ratio)																	
	Room Values are expressed as percentage of Lumens delivered to the task surface																	
0	119	119	119	119	116	116	116	116	111	111	111	106	106	106	102	102	102	100
1	114	112	109	107	112	109	107	106	105	104	102	102	101	99	98	97	97	95
2	110	105	102	99	107	104	100	98	100	98	96	98	95	94	95	93	92	90
3	105	100	96	92	103	98	95	92	96	93	90	94	91	89	91	89	87	86
4	101	95	90	87	100	94	90	86	92	88	85	90	87	84	88	86	83	82
5	98	91	86	82	96	90	85	82	88	84	81	87	83	81	85	82	80	79
6	94	87	82	78	93	86	81	78	85	81	78	83	80	77	82	79	77	75
7	91	83	78	75	90	83	78	75	81	77	74	80	77	74	79	76	74	72
8	88	80	75	72	87	79	75	72	78	74	71	78	74	71	77	73	71	70
9	85	77	72	69	84	77	72	69	76	72	69	75	71	68	74	71	68	67
10	82	74	70	66	81	74	69	66	73	69	66	72	69	66	72	68	66	65

Zonal Lumen Summary

0°-10°	10°-20°	20°-30°	30°-40°	40°-50°	50°-60°	60°-70°	70°-80°	80°-90°
142 lm	266 lm	137 lm	36.2 lm	10.2 lm	5.88 lm	5.47 lm	4.33 lm	3.05 lm
90°-100°	100°-110°	110°-120°	120°-130°	130°-140°	140°-150°	150°-160°	160°-170°	170°-180°
0.000 lm	0.000 lm	0.000 lm	0.000 lm	0.000 lm	0.000 lm	0.000 lm	0.000 lm	0.000 lm