

Light efficiency:



Output: 653 lm

Light quality:

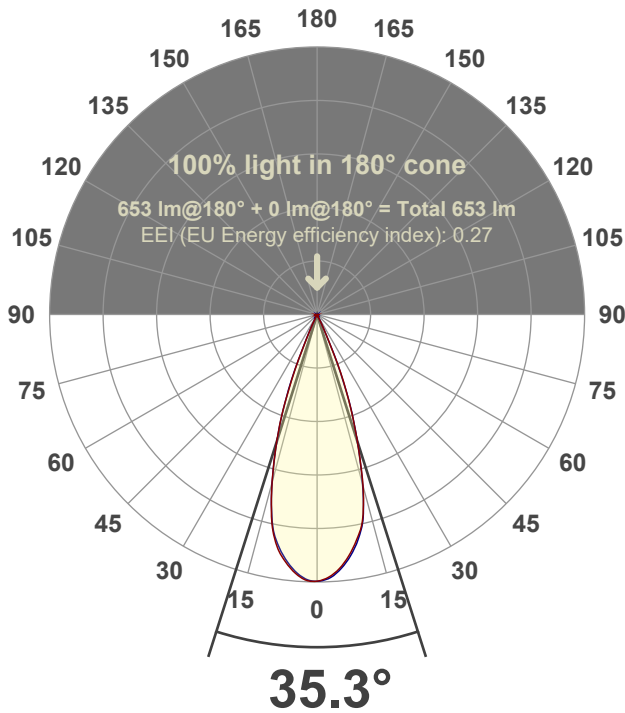


Peak: 2061 cd

Power: 14.6 W



Beam angle



Test number:

GR-F-F-A14-3019-FL-RD-Rev2

Luminaire Model:

Graffiti Flat Round Fixed Downlight-A14-3019 38° Optic

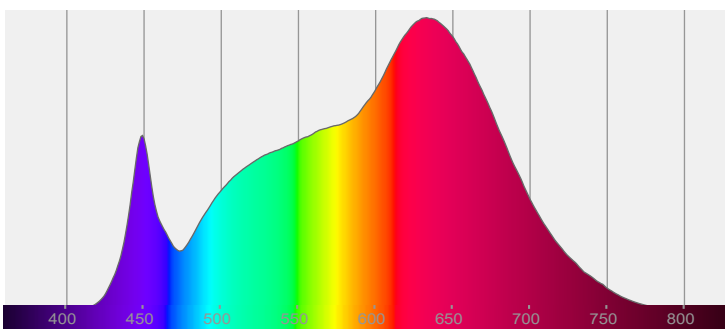
Date and time:

3/24/2022 9:56:34 PM

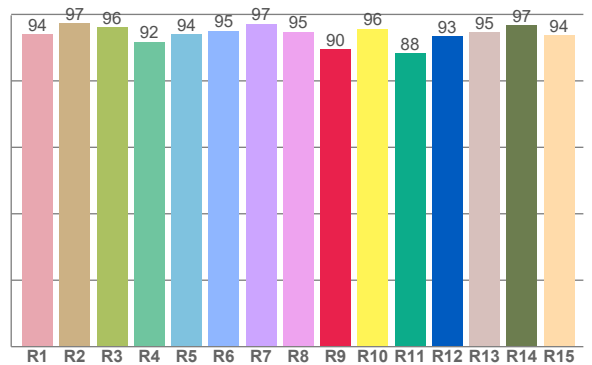
Delivered Lumens

653

Spectra



CRI: 95.0 (R1-R8)



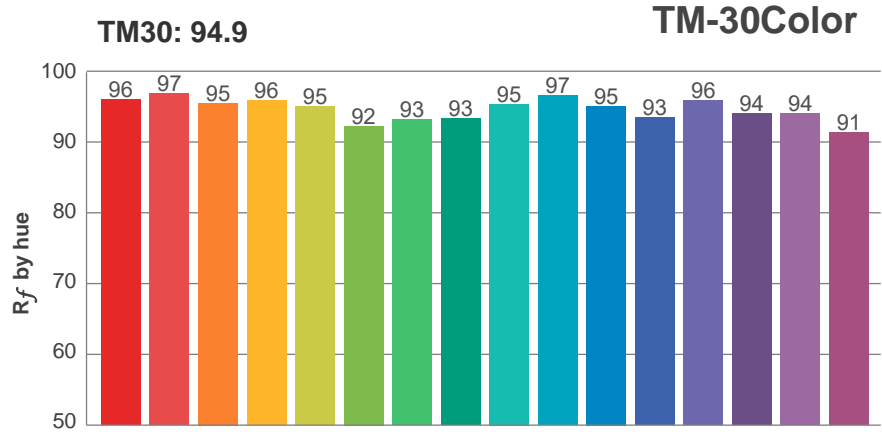
Color parameters

	Color rendering index	Red component	Color fidelity	Color gamut	Color quality scale	Color coordinate cie 1931	Color coordinate cie 1931	Color coordinate	Color coordinate	Color deviation from black body
	CRI	CRI R9	TM30 R <sub>f</sub>	TM30 R <sub>g</sub>	CQS	x	y	u	v	Δuv
	95.0	89.5	94.9	105.4	95.1	0.422	0.388	0.248	0.342	-0.0046

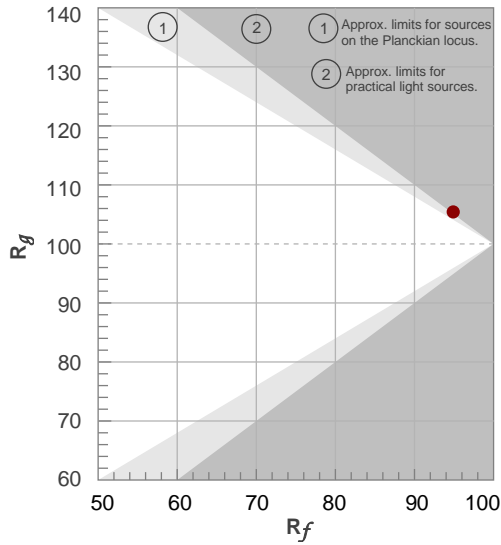
**$R_f$  94.9**  
Fidelity index  $R_f$

---

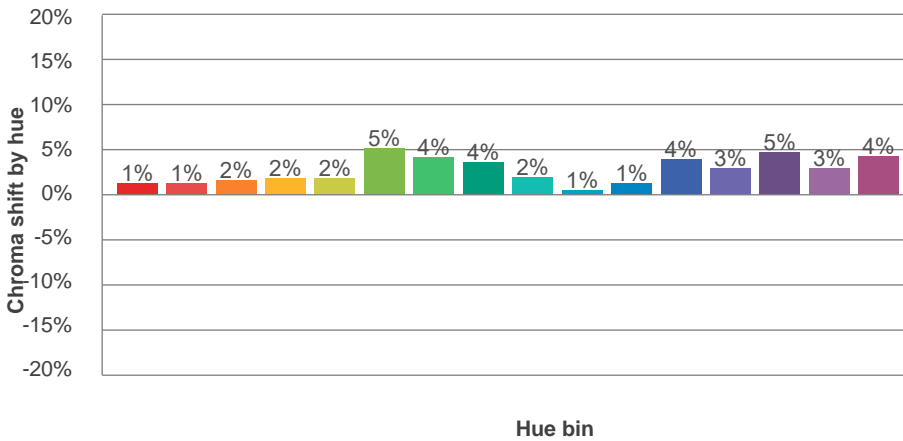
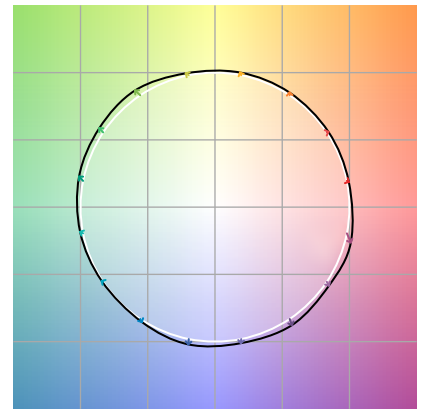
**$R_g$  105.4**  
Gammut index  $R_g$



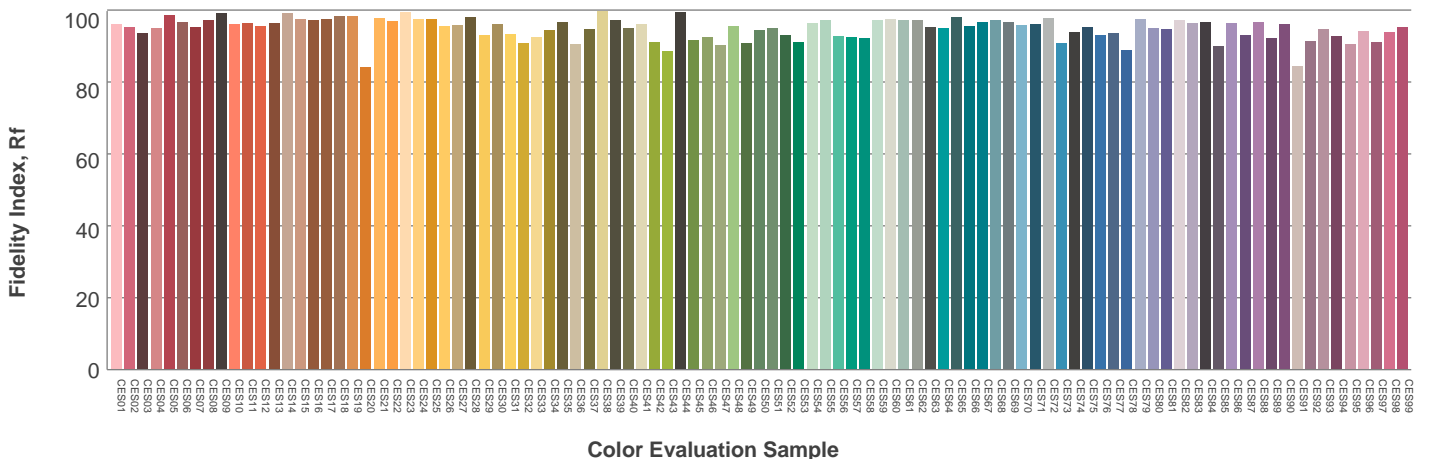
Hue Bin	$R_f$	Graphic shifts (%)	
		Chroma	Hue
1	96	1%	-1%
2	97	1%	0%
3	95	2%	1%
4	96	2%	1%
5	95	2%	2%
6	92	5%	1%
7	93	4%	-1%
8	93	4%	-3%
9	95	2%	-2%
10	97	1%	-1%
11	95	1%	2%
12	93	4%	0%
13	96	3%	-1%
14	94	5%	-1%
15	94	3%	-1%
16	91	4%	-6%



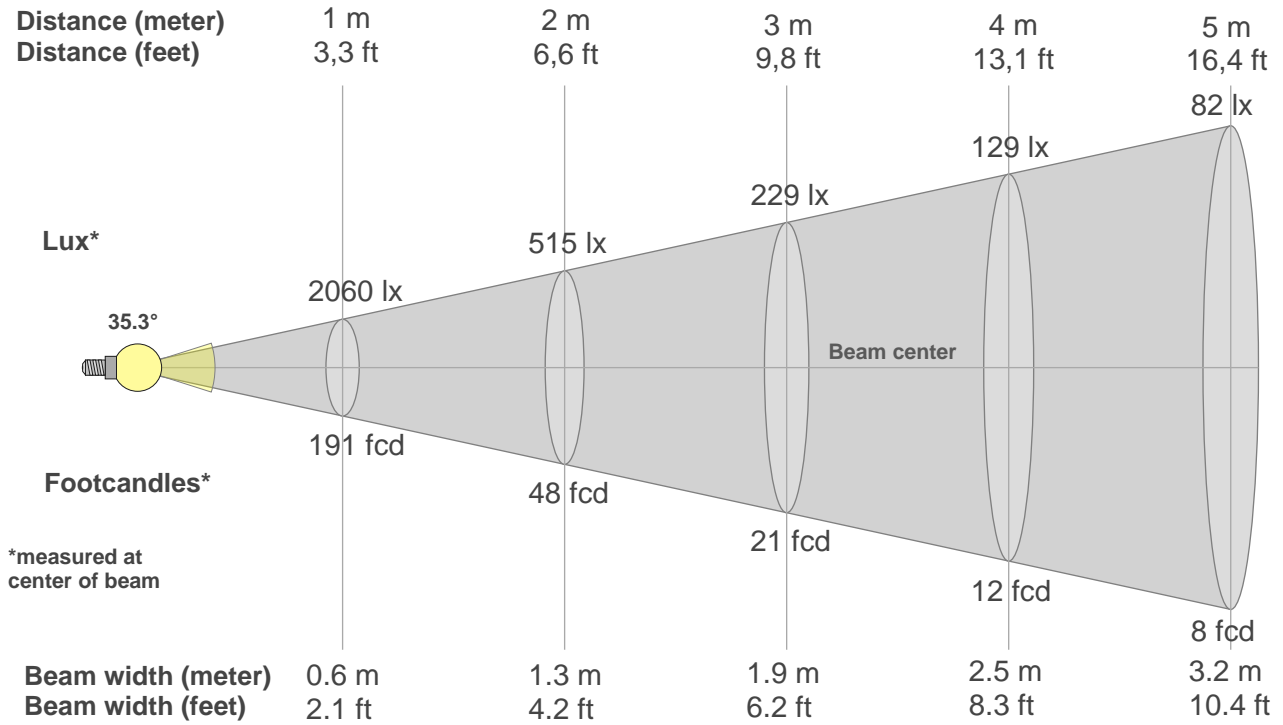
Color vector graphics



Color distortion



### Beam details



#### Beam intensities from 1-20m

1m	2m	3m	4m	5m	6m	7m	8m	9m	10m	11m	12m	13m	14m	15m	16m	17m	18m	19m	20m
3.3ft	6.6ft	9.8ft	13.1ft	16.4ft	19.7ft	23ft	26.2ft	29.5ft	32.8ft	36.1ft	39.4ft	42.7ft	45.9ft	49.2ft	52.5ft	55.8ft	59.1ft	62.3ft	65.6ft
2060lx	515lx	229lx	129lx	82lx	57lx	42lx	32lx	25lx	21lx	17lx	14lx	12lx	11lx	9lx	8lx	7lx	6lx	6lx	5lx
191.4fcd	47.9fcd	21.3fcd	12fcd	7.7fcd	5.3fcd	3.9fcd	3fcd	2.4fcd	1.9fcd	1.6fcd	1.3fcd	1.1fcd	1fcd	0.9fcd	0.7fcd	0.7fcd	0.6fcd	0.5fcd	0.5fcd

#### Intensities in 0° c-plane

0°	2°	4°	6°	8°	10°	12°	14°	16°	18°	20°	22°	24°	26°	28°	30°	32°	34°	36°	38°
2060	2039	1997	1937	1859	1767	1657	1478	1245	991	749	510	255	94	24	10	6	5	3	3
100%	99%	97%	94%	90%	86%	80%	72%	60%	48%	36%	25%	12%	5%	1%	0%	0%	0%	0%	0%

#### Intensities in 90° c-plane

0°	2°	4°	6°	8°	10°	12°	14°	16°	18°	20°	22°	24°	26°	28°	30°	32°	34°	36°	38°
2060	2046	2010	1952	1879	1785	1662	1475	1238	986	752	491	250	88	27	12	8	6	4	4
100%	99%	98%	95%	91%	87%	81%	72%	60%	48%	37%	24%	12%	4%	1%	1%	0%	0%	0%	0%

#### Intensities in 180° c-plane

0°	2°	4°	6°	8°	10°	12°	14°	16°	18°	20°	22°	24°	26°	28°	30°	32°	34°	36°	38°
2060	2057	2024	1970	1898	1806	1670	1462	1231	992	741	458	213	89	33	13	7	5	4	3
100%	100%	98%	96%	92%	88%	81%	71%	60%	48%	36%	22%	10%	4%	2%	1%	0%	0%	0%	0%

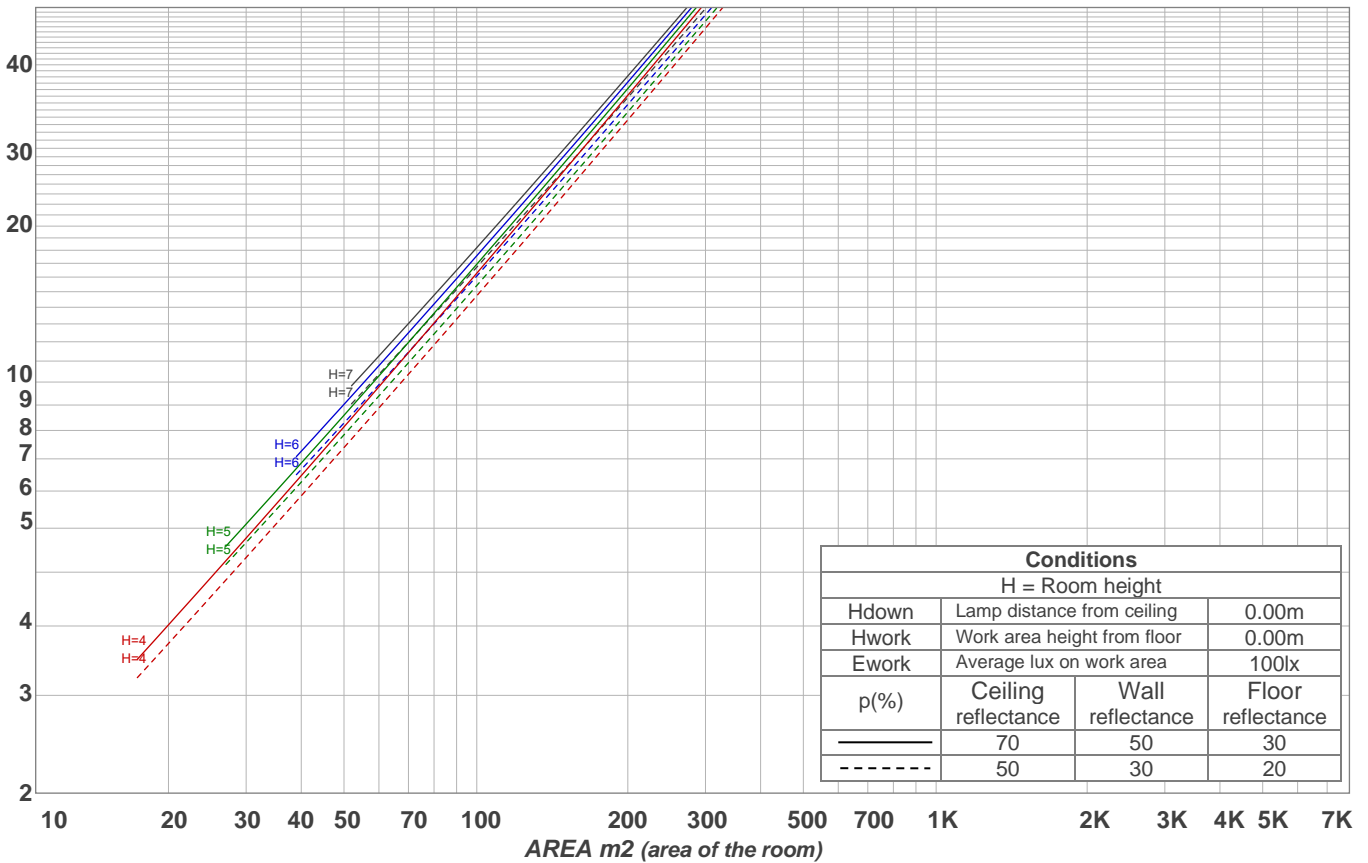
#### Intensities in 270° c-plane

0°	2°	4°	6°	8°	10°	12°	14°	16°	18°	20°	22°	24°	26°	28°	30°	32°	34°	36°	38°
2060	2053	2014	1955	1878	1783	1657	1461	1226	986	738	475	203	77	28	11	6	4	4	3
100%	100%	98%	95%	91%	87%	80%	71%	59%	48%	36%	23%	10%	4%	1%	1%	0%	0%	0%	0%

Beam angle 50%	Field angle 10%	Cutoff angle 2,5%	Intensity ratio in 120° cone	Intensity ratio in 90° cone
35.3°	48.4°	53.5°	99.0%	98.6%

LAMPS (number of lamps)  
50

### Light planning Luminaire budgetary diagram



### Luminaire budgetary diagram AREA m2 (area of the room) Coefficients of Utilization

Ceiling reflectance	80				70				50			30			10			0			
Wall reflectance	70	50	30	10	70	50	30	10	50	30	10	50	30	10	50	30	10	50	30	10	0
Floor reflectance	20	20	20	20	20	20	20	20	20	20	20	20	20	20	20	20	20	20	20	20	0
RCR	(RCR: Room Cavity Ratio)																				
	Room Values are expressed as percentage of Lumens delivered to the task surface																				
0	119	119	119	119	116	116	116	116	111	111	111	106	106	106	102	102	102	100	100	100	
1	115	113	111	109	112	110	109	107	106	105	104	103	102	101	99	99	98	96	96	96	
2	111	107	104	101	109	106	103	100	102	100	98	100	98	96	97	95	94	93	93	93	
3	107	103	99	96	106	101	98	95	99	96	94	96	94	92	94	92	91	90	90	90	
4	104	98	94	91	102	97	94	91	95	92	90	94	91	89	92	90	88	87	87	87	
5	101	95	91	88	99	94	90	87	92	89	86	91	88	86	89	87	85	84	84	84	
6	98	91	87	84	97	91	87	84	89	86	83	88	85	83	87	84	82	81	81	81	
7	95	88	84	81	94	88	84	81	87	83	81	86	83	80	85	82	80	79	79	79	
8	92	86	81	79	91	85	81	78	84	81	78	83	80	78	83	80	78	77	77	77	
9	90	83	79	76	89	83	79	76	82	78	76	81	78	76	80	77	75	74	74	74	
10	87	81	76	74	87	80	76	74	80	76	74	79	76	73	78	75	73	72	72	72	

### Zonal Lumen Summary

0°-10°	10°-20°	20°-30°	30°-40°	40°-50°	50°-60°	60°-70°	70°-80°	80°-90°
183 lm	359 lm	97.8 lm	3.04 lm	1.41 lm	1.82 lm	1.89 lm	2.04 lm	2.31 lm
90°-100°	100°-110°	110°-120°	120°-130°	130°-140°	140°-150°	150°-160°	160°-170°	170°-180°
0.000 lm	0.000 lm	0.000 lm	0.000 lm	0.000 lm	0.000 lm	0.000 lm	0.000 lm	0.000 lm