

Light efficiency:



Output: 570 lm

Light quality:

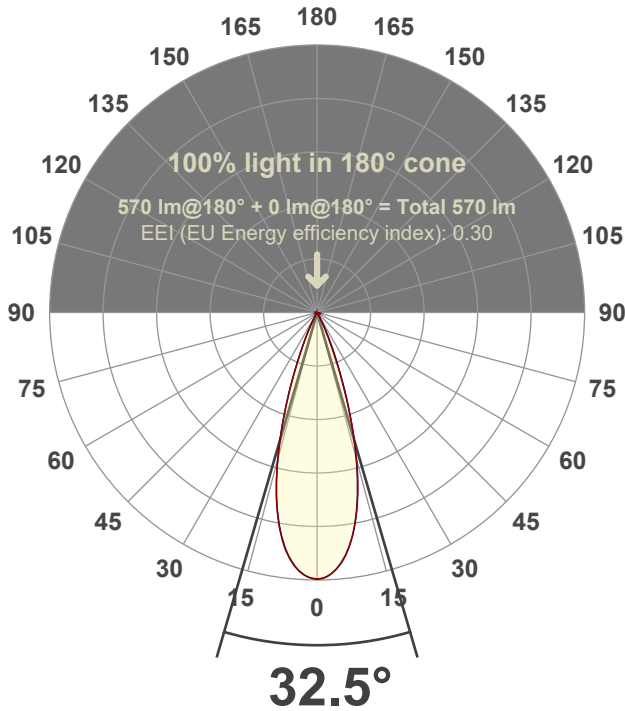


Peak: 1911 cd

Power: 14.7 W



Beam angle



Test number:

GR-F-F-A14-3019-FL-SQ-91A-Rev2

Luminaire Model:

Graffiti Flat SquareFixed Downlight-A14-3019 38° Optic-Solite

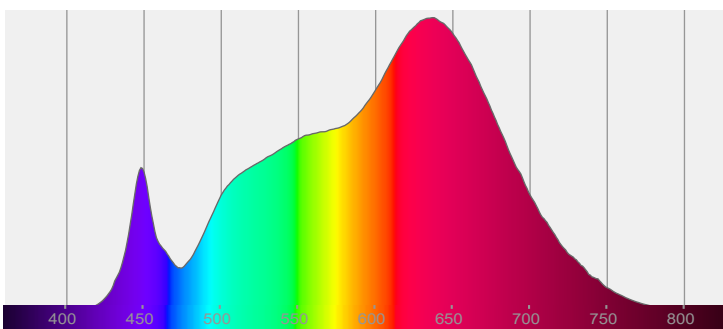
Date and time:

6/30/2022 11:54:22 AM

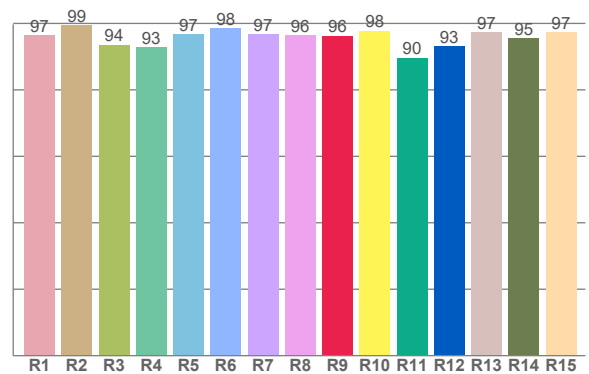
Delivered Lumens

570

Spectra



CRI: 96.3 (R1-R8)



Color parameters

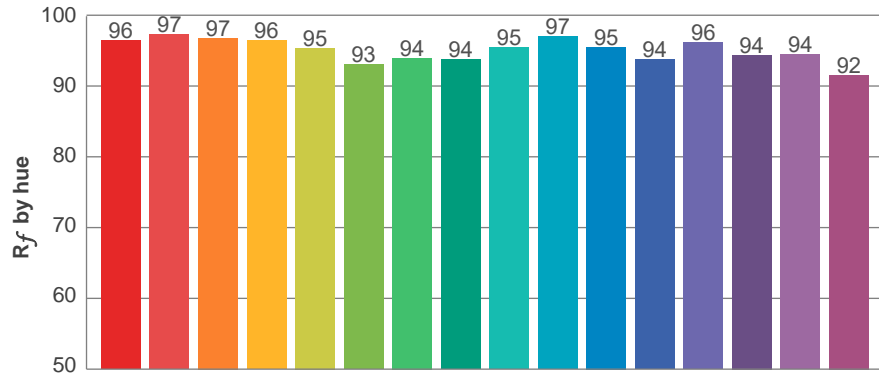
	Color rendering index	Red component	Color fidelity	Color gamut	Color quality scale	Color coordinate cie 1931	Color coordinate cie 1931	Color coordinate	Color coordinate	Color deviation from black body
	CRI	CRI R9	TM30 R _f	TM30 R _g	CQS	x	y	u	v	Δuv
	96.3	96.3	95.3	104.1	94.9	0.436	0.403	0.250	0.347	-0.0004

R_f 95.3
Fidelity index R_f

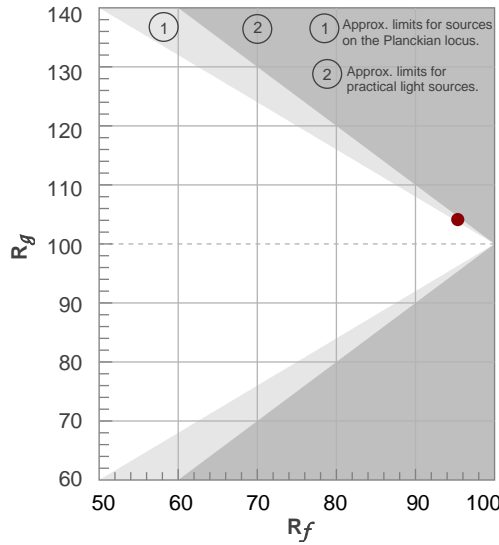
R_g 104.1
Gammut index R_g

TM30: 95.3

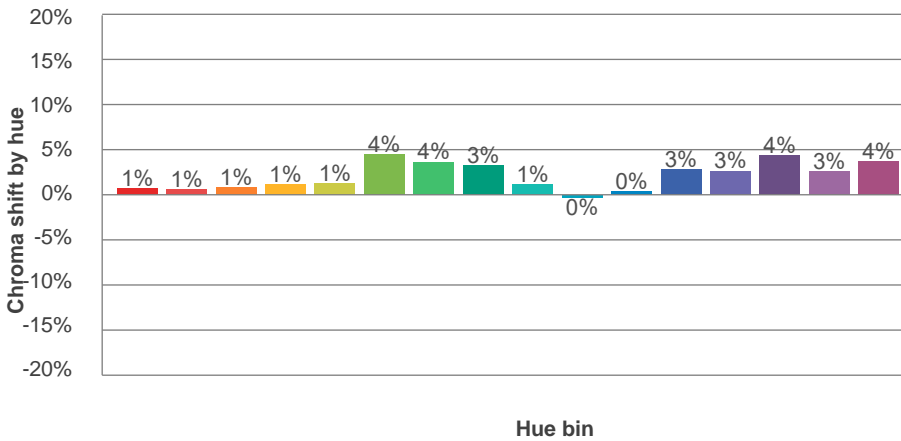
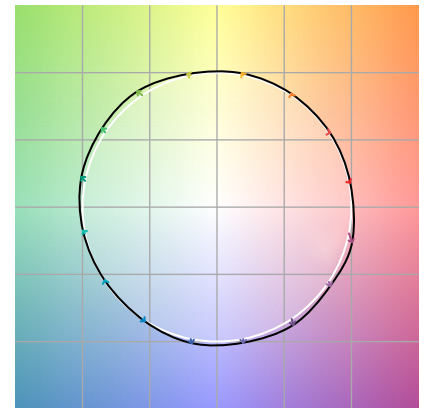
TM-30Color



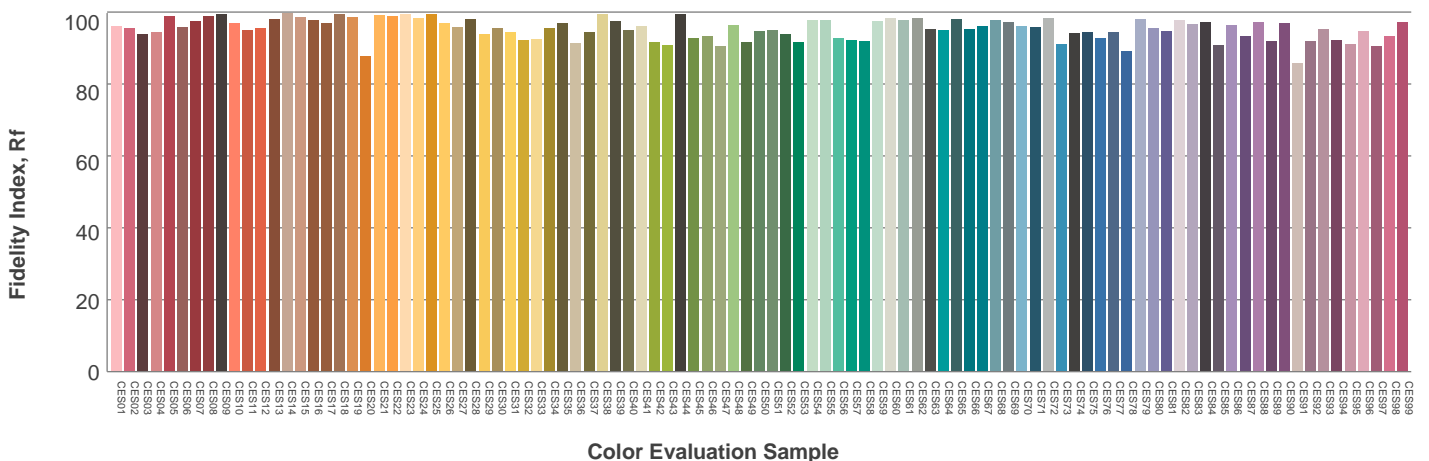
Hue Bin	R_f	Graphic shifts (%)	
		Chroma	Hue
1	96	1%	-2%
2	97	1%	-1%
3	97	1%	1%
4	96	1%	1%
5	95	1%	2%
6	93	4%	2%
7	94	4%	-1%
8	94	3%	-2%
9	95	1%	-2%
10	97	0%	-1%
11	95	0%	2%
12	94	3%	1%
13	96	3%	-1%
14	94	4%	-1%
15	94	3%	-2%
16	92	4%	-6%



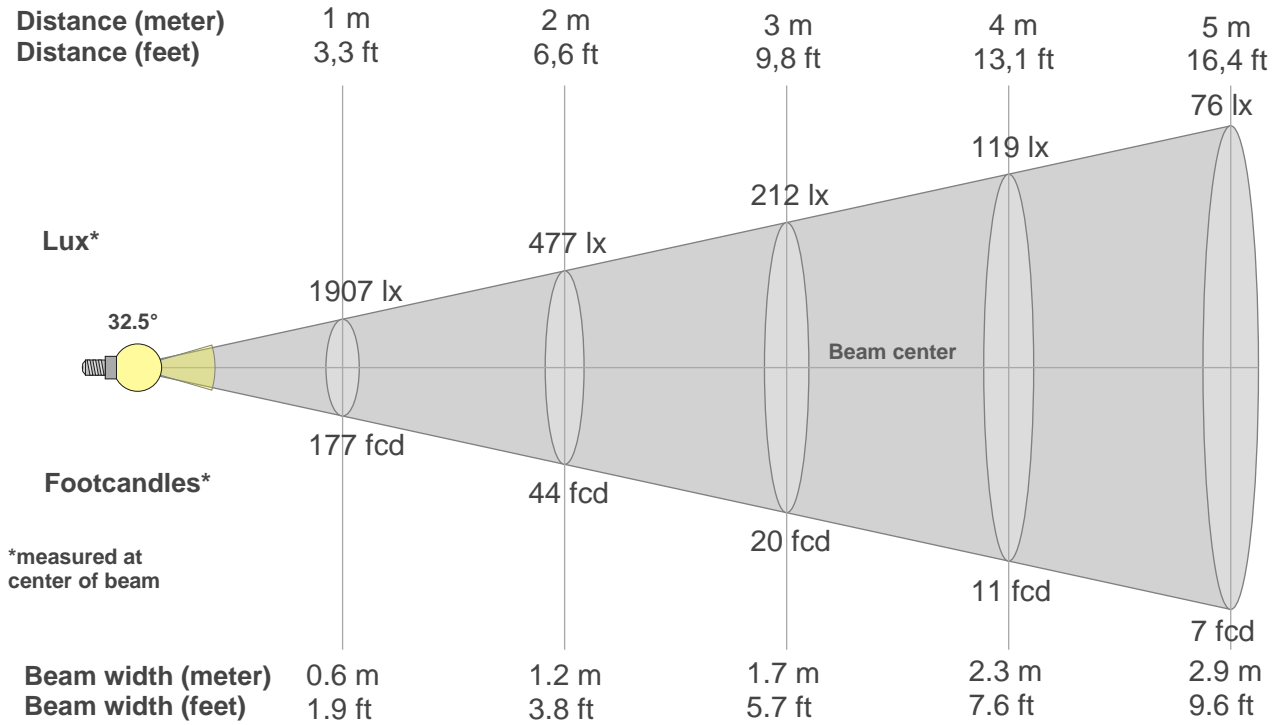
Color vector graphics



Color distortion



Beam details



Beam intensities from 1-20m

1m	2m	3m	4m	5m	6m	7m	8m	9m	10m	11m	12m	13m	14m	15m	16m	17m	18m	19m	20m
3.3ft	6.6ft	9.8ft	13.1ft	16.4ft	19.7ft	23ft	26.2ft	29.5ft	32.8ft	36.1ft	39.4ft	42.7ft	45.9ft	49.2ft	52.5ft	55.8ft	59.1ft	62.3ft	65.6ft
1907lx	477lx	212lx	119lx	76lx	53lx	39lx	30lx	24lx	19lx	16lx	13lx	11lx	10lx	8lx	7lx	7lx	6lx	5lx	5lx
177.2fcd	44.3fcd	19.7fcd	11.1fcd	7.1fcd	4.9fcd	3.6fcd	2.8fcd	2.2fcd	1.8fcd	1.5fcd	1.2fcd	1fcd	0.9fcd	0.8fcd	0.7fcd	0.6fcd	0.5fcd	0.5fcd	0.4fcd

Intensities in 0° c-plane

0°	2°	4°	6°	8°	10°	12°	14°	16°	18°	20°	22°	24°	26°	28°	30°	32°	34°	36°	38°
1907	1892	1851	1782	1680	1548	1388	1201	986	755	535	350	211	116	59	31	19	12	9	7
100%	99%	97%	93%	88%	81%	73%	63%	52%	40%	28%	18%	11%	6%	3%	2%	1%	1%	0%	0%

Intensities in 90° c-plane

0°	2°	4°	6°	8°	10°	12°	14°	16°	18°	20°	22°	24°	26°	28°	30°	32°	34°	36°	38°
1907	1893	1847	1775	1675	1545	1382	1187	977	763	559	382	245	152	92	54	32	20	12	8
100%	99%	97%	93%	88%	81%	72%	62%	51%	40%	29%	20%	13%	8%	5%	3%	2%	1%	1%	0%

Intensities in 180° c-plane

0°	2°	4°	6°	8°	10°	12°	14°	16°	18°	20°	22°	24°	26°	28°	30°	32°	34°	36°	38°
1907	1891	1854	1788	1692	1557	1392	1199	985	762	545	366	232	137	77	42	26	17	11	8
100%	99%	97%	94%	89%	82%	73%	63%	52%	40%	29%	19%	12%	7%	4%	2%	1%	1%	1%	0%

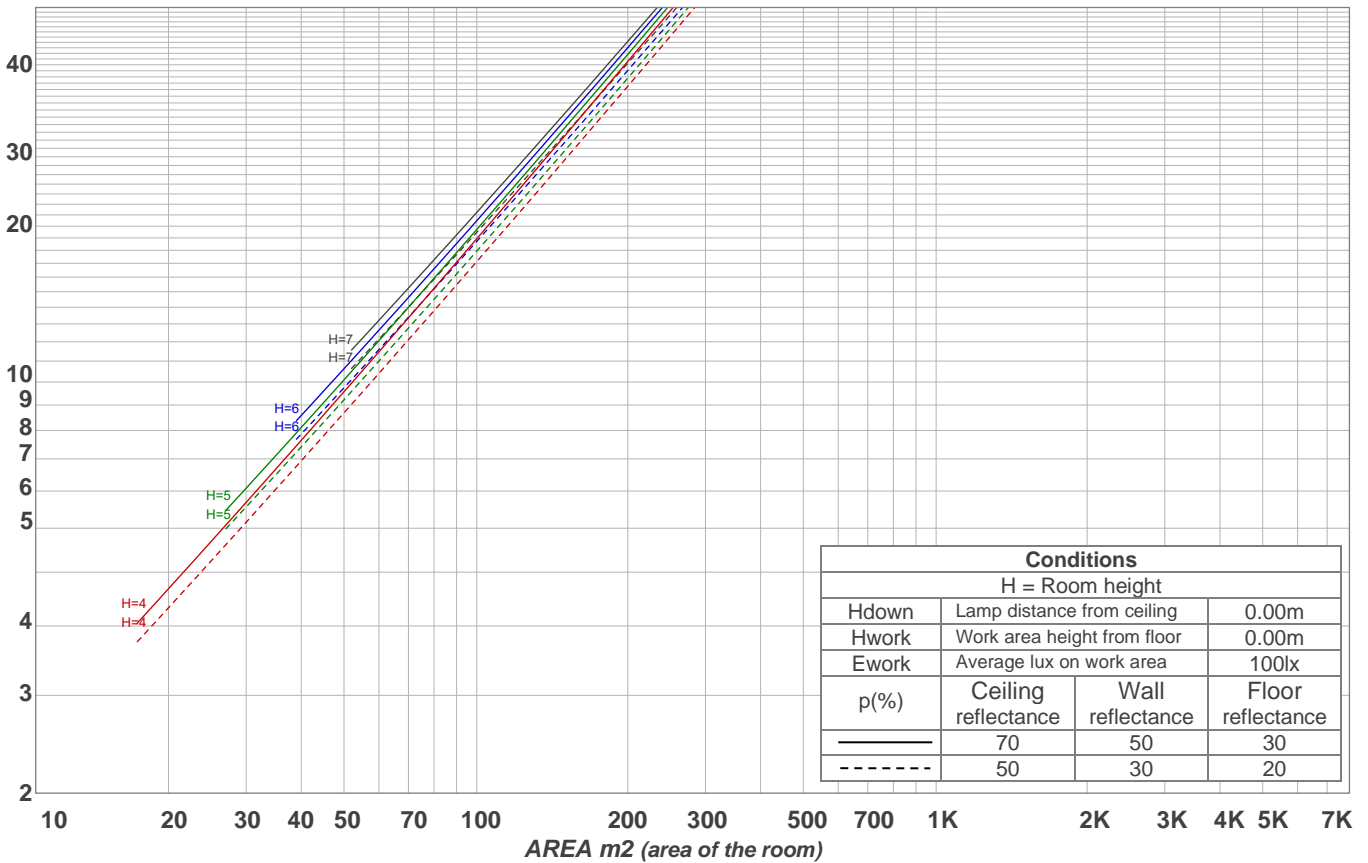
Intensities in 270° c-plane

0°	2°	4°	6°	8°	10°	12°	14°	16°	18°	20°	22°	24°	26°	28°	30°	32°	34°	36°	38°
1907	1893	1850	1780	1680	1550	1391	1196	978	760	554	373	232	142	84	49	28	16	11	8
100%	99%	97%	93%	88%	81%	73%	63%	51%	40%	29%	20%	12%	7%	4%	3%	1%	1%	1%	0%

Beam angle 50%	Field angle 10%	Cutoff angle 2,5%	Intensity ratio in 120° cone	Intensity ratio in 90° cone
32.5°	49.6°	59.4°	98.7%	98.1%

LAMPS (number of lamps)
50

Light planning Luminaire budgetary diagram



Luminaire budgetary diagram AREA m2 (area of the room) Coefficients of Utilization

Ceiling reflectance	80				70				50			30			10			0			
Wall reflectance	70	50	30	10	70	50	30	10	50	30	10	50	30	10	50	30	10	50	30	10	0
Floor reflectance	20	20	20	20	20	20	20	20	20	20	20	20	20	20	20	20	20	20	20	20	0
RCR	(RCR: Room Cavity Ratio)																				
	Room Values are expressed as percentage of Lumens delivered to the task surface																				
0	119	119	119	119	116	116	116	116	111	111	111	106	106	106	102	102	102	100	100	100	
1	115	112	110	108	112	110	108	107	106	105	104	103	101	100	99	98	98	96	96	96	
2	111	107	104	101	109	105	102	100	102	100	98	99	97	96	96	95	94	92	92	92	
3	107	102	98	95	105	101	97	95	98	95	93	96	94	92	94	92	90	89	89	89	
4	104	98	94	91	102	97	93	90	95	92	89	93	90	88	91	89	87	86	86	86	
5	100	94	90	87	99	93	89	86	92	88	86	90	87	85	89	86	84	83	83	83	
6	97	91	86	83	96	90	86	83	89	85	83	87	84	82	86	84	81	80	80	80	
7	94	88	83	80	93	87	83	80	86	82	80	85	82	79	84	81	79	78	78	78	
8	92	85	81	78	91	84	80	77	83	80	77	83	79	77	82	79	77	76	76	76	
9	89	82	78	75	88	82	78	75	81	77	75	80	77	75	80	77	74	73	73	73	
10	87	80	76	73	86	79	75	73	79	75	73	78	75	72	77	74	72	71	71	71	

Zonal Lumen Summary

0°-10°	10°-20°	20°-30°	30°-40°	40°-50°	50°-60°	60°-70°	70°-80°	80°-90°
165 lm	289 lm	93.2 lm	9.84 lm	2.80 lm	2.33 lm	2.56 lm	2.56 lm	2.40 lm
90°-100°	100°-110°	110°-120°	120°-130°	130°-140°	140°-150°	150°-160°	160°-170°	170°-180°
0.000 lm	0.000 lm	0.000 lm	0.000 lm	0.000 lm	0.000 lm	0.000 lm	0.000 lm	0.000 lm